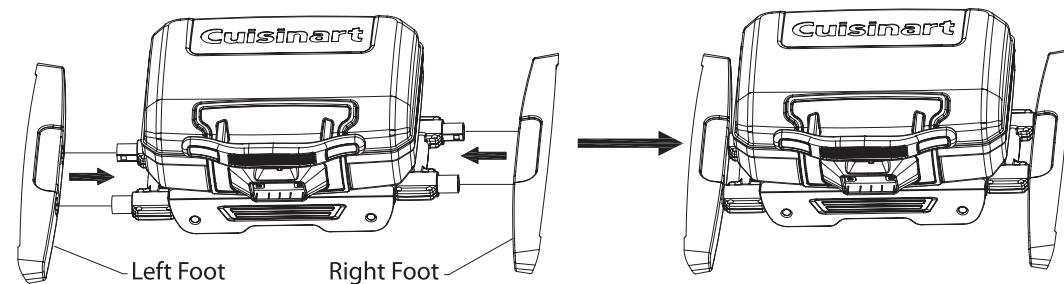


4. Assembly Instructions

Remove all the contents from packaging, and make sure all parts are present before attempting to assemble!

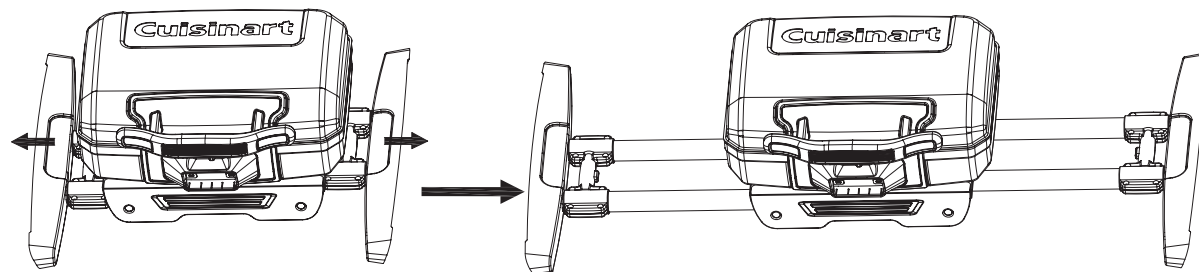
Step 1: Attach Feet

Put the left foot and right foot on the lower leg as illustrated. The feet and legs have color coded arrows on them. When properly aligned, two arrows of the same color will be pointing at each other.



Step 2: Extend Legs to mid position.

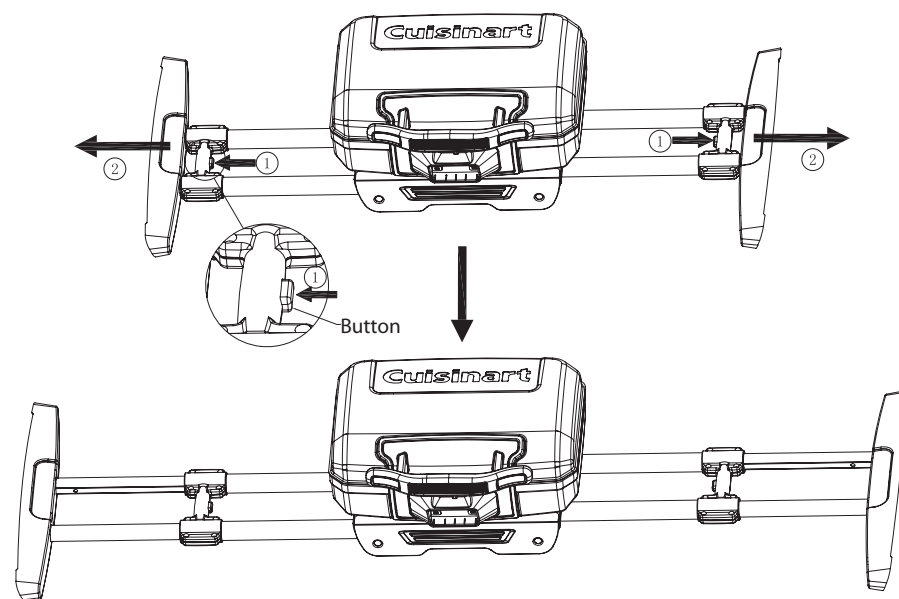
Move the left foot and right foot as illustrated until the end.



If only mid height is desired, skip to step 4.

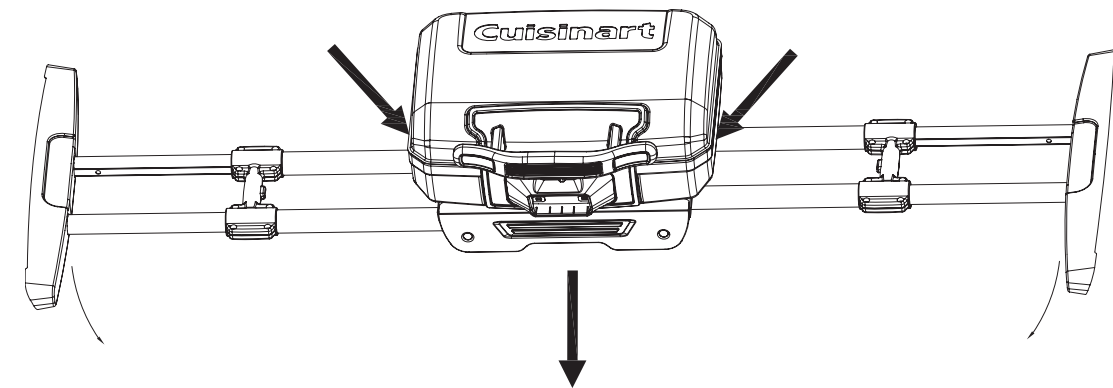
Step 3: Extend legs to high position

Push the button and pull the legs out until the end.



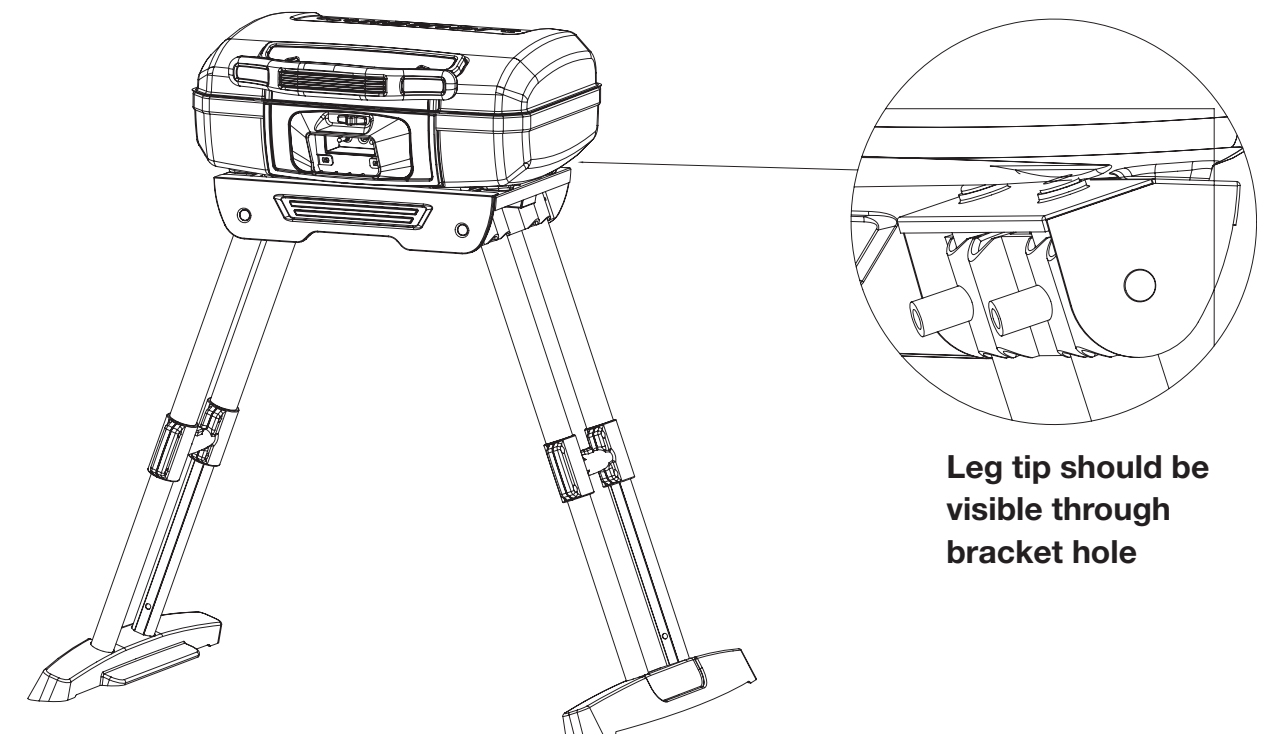
Step 4: Lift Grill to Height

Hold both sides of the chassis and lift up until the legs standing on the ground.



Step 5:

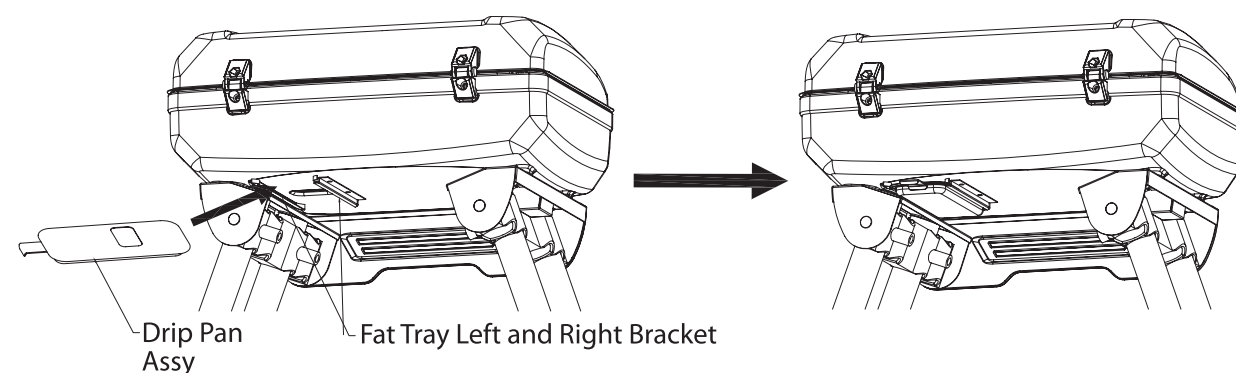
Put the grill down and check if the legs are in the position as illustrated.



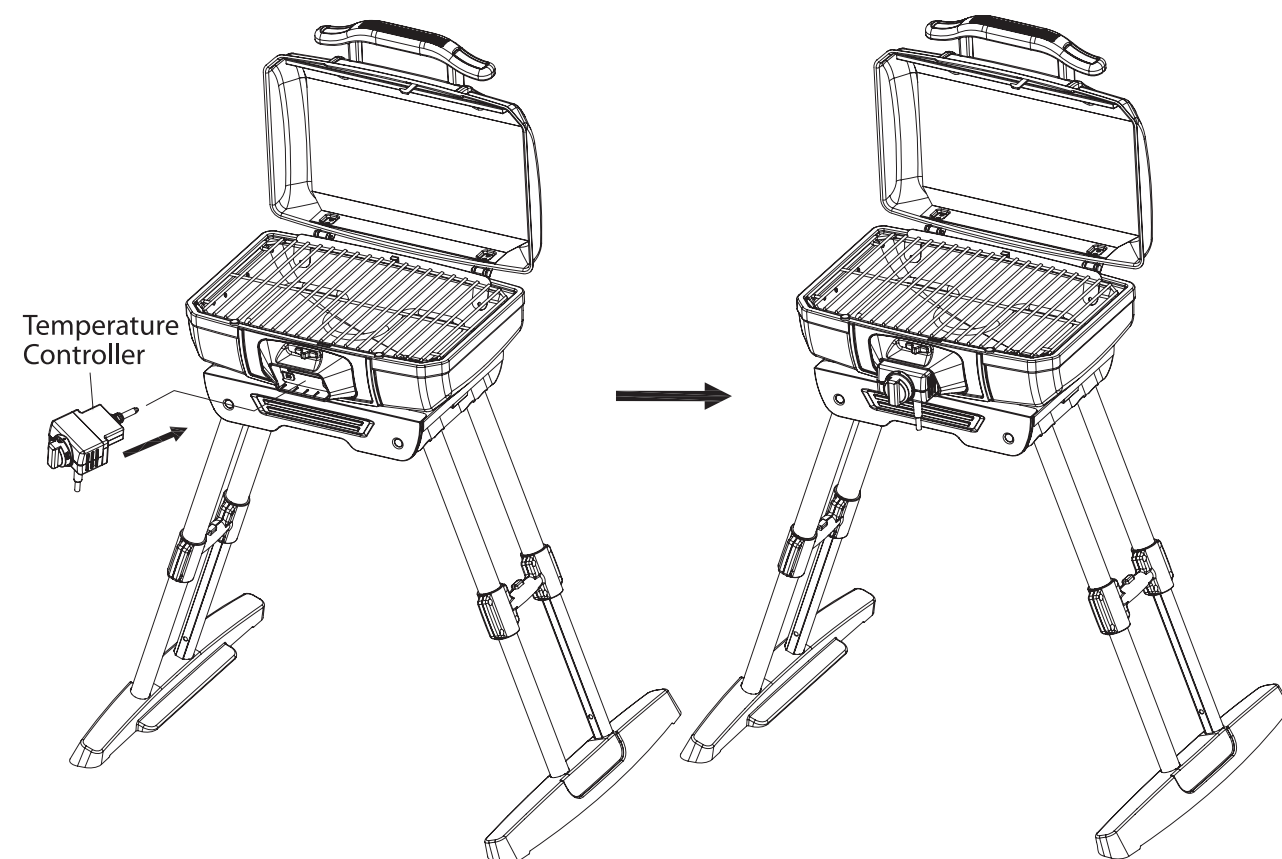
Leg tip should be visible through bracket hole

4. Assembly Instructions (cont.)

Step 6: Put the Drip Tray to the correct position as shown.



Step 7: Put the probe into the correct position in the frame as shown.

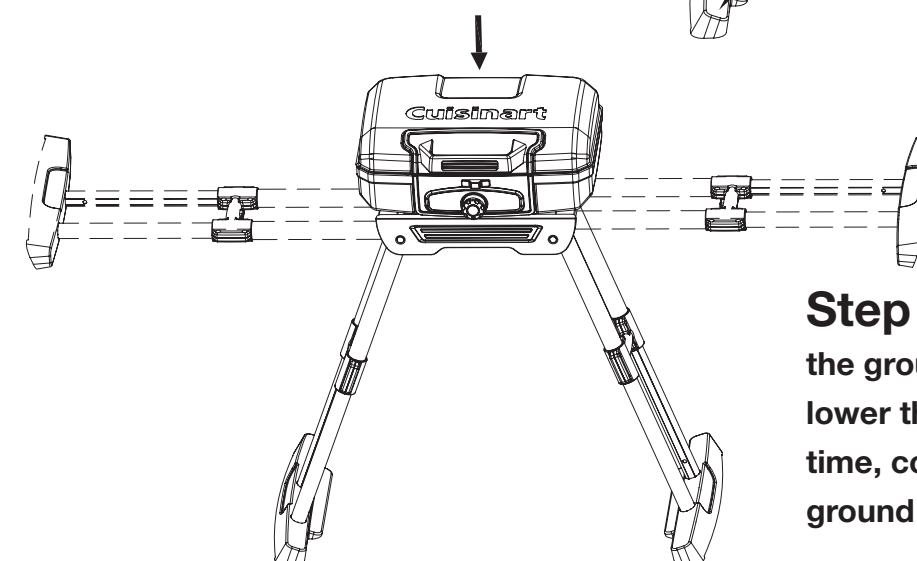
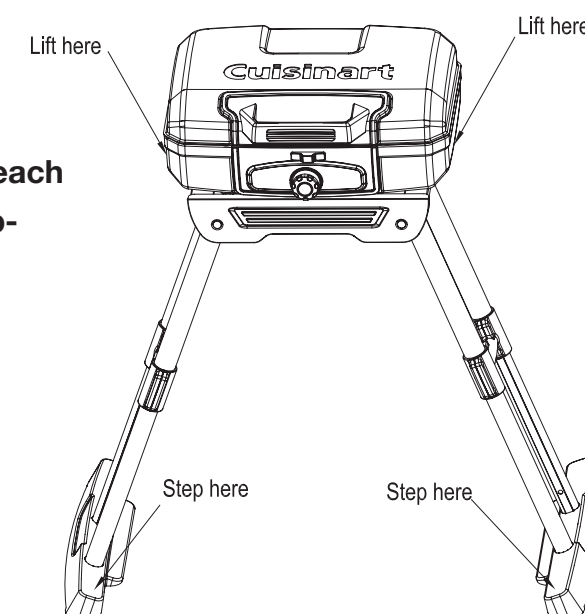


To Collapse grill

Step 1: Wait for Grill to cool completely

Step 2 : Be sure gas bottle or supply hose is disconnected

Step 3 : Place one foot on each grill foot and lift grill chassis upwards to unlock legs



Step 4: While holding grill off the ground, swing the legs apart and lower the grill slowly at the same time, continue until grill is flat on the ground with legs to the sides

Step 5: Push legs inward toward grill chassis. You must push the leg release button (as shown) to collapse legs under grill

