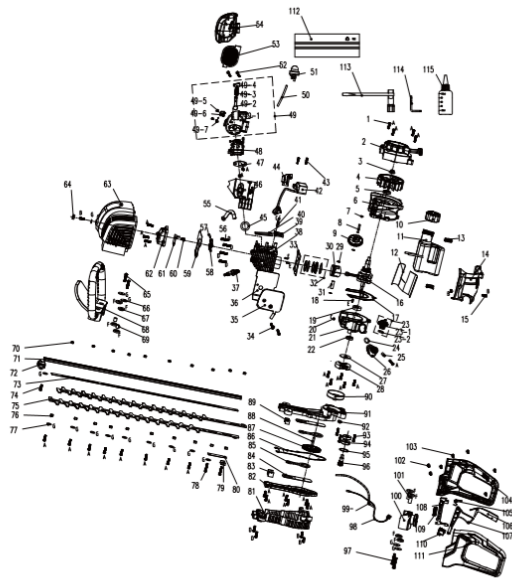


PARTS



PARTS LIST

No.	Part #	Description	Qty.	No.	Part #	Description	Qty.
1	207421000003	Screw	29	56	20294000222	pipe	1
2	19996000097	Starter assembly	1	59	207310100736	screw	6
3	207320100001	Hexagon flange nut	1	57	207199900091	Pin roll	1
4	201088000017	Flywheel	1	58	199960000116	Rocker assembly	2
5	20296001083	Oil seal	1	59	299960000396	Head gasket	1
6	201120000054	Crank case	1	60	207310100735	screw	1
7	2070569000216	Washer	2	61	299960000048	Oil block	1
8	2010260000354	Shaft	1	62	2010680000226	Cylinder head	1
9	202020000048	Gear	1	63	202030001559	Cover shell	1
10	199123000493	Oil box cap assy	1	64	202030000054	Rubber stopper	1
11	199124000184	Oil box assy	1	65	207310100744	screw	2
12	201966001248	Insulating film	1	66	R8202-830301	Washer	4
13	202017000099	vibration reduction pad	2	67	202017000098	Shock pad	8
14	202030001578	Cover	1	68	202024000331	Front handle	1
15	207310100739	screw	5	69	201966001199	The support tube	2
16	2010380000004	Bent axle	1	70	207320100124	Nut	10
17	299996000396	Crankcase washer	1	71	201069000331	Holder	1
18	207350100042	Pin	4	72	202030000007	Blade protector	1
19	207390200006	Bearing	1	73	201966001393	Friction pad	1
20	207310100610	screw	2	74	207310101121	Self tapping screw	1
21	201126000057	Crank case	1	75	201045000188	Blade	2
22	202996001495	Oil seal	1	76	201966001241	Blade slider	10
23	199996001389	Oil dipstick components	1	77	2070569000005	Washer	11
23-1	202196000585	Fuel tank cap	1	78	207310100739	screw	2
23-2	207279600020	O-check ring	1	79	201069000254	Holder	1
24	207210000006	O-check ring	1	80	201966001245	Blade Oil block	1
25	201999000181	Bushing	1	81	202030001576	Gear box Prevent hot cover	1
26	202019000235	Connector joint	1	82	201068000232	Gear box cover	1
27	207056900192	Big washer	1	83	299960000370	Filled wood	1
28	199996001078	Clutch assembly	1	84	2070569001211	Friction pad	2
29	207299900092	Piston pin check ring	2	85	2010630000006	Linked rod	2
30	201109000039	Piston	1	86	202960001494	Seal ring	1
31	201996001277	Piston pin	1	87	201040000300	Passivity gear	1
32	201110000044	Piston rings	1	88	2010280000288	Jack shaft	1
33	299996000244	Cylinder pad	1	89	202071000014	Oil block	1
34	207310100740	screw	2	90	201180000009	Drivendisk	1
35	199113000040	Muffler assembly	1	91	201069000390	Gear box body	1
36	299996000392	Muffler pad	1	92	201966000199	Grease nozzle	1
37	199996001291	Speaking plug	1	93	207310100691	screw	3
38	199996001378	Cylinder components	1	94	207390100078	Bearing 5001Z	2
39	201996000685	Low Arm	2	95	207340100006	Retaining ring	1
40	201091000024	Tapset	2	96	201040000056	Driving gear	1
41	207199900081	Pin roll	1	97	207421000002	screw	2
42	199937000037	Igniter	1	98	199996001083	Stopping wire	1
43	207310100734	screw	2	99	199937000039	Power wire	1
44	201996001212	Wind screen	1	100	202030000319	Finng base	1
45	299996000412	Washer	1	101	201966001343	The support tube	2
46	20296001788	Inlet air pipe	1	102	207310100313	Self tapping screw	3
47	299996000246	Enter air washer	1	103	207310100310	Self tapping screw	4
48	199064000058	Carburetor	1	104	202024000338	Hand shank	1
49	199996001415	Air Filter Block Component	1	105	207019600458	Torsional spring	1
49-1	20296001787	Air filter holder	1	108	20296001759	Control arm	1
49-2	20296001335	Choke valve board	1	107	20204000862	Throttle trigger	1
49-3	201996000691	Button spring	1	109	202071000008	Control Block	1
49-4	202003001658	Button	1	109	207019600456	Spring	1
49-5	207310100322	Flange tapping screw	2	110	207180200023	The rocker switch	1
49-6	202066000304	Slide block	1	111	202024000340	Hand shank	1
49-7	201996000792	Spring	1	112	202030000156	Knife set	1
50	302000003	Tubeing	0	113	208008000041	Spanner	1
52	207310100741	screw	2	114	208008000040	Spanner	1
53	299996000390	Air filter screen	1	115	202066001698	Plastic bottles	1
54	202030001578	Cover	1				