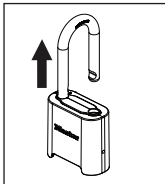
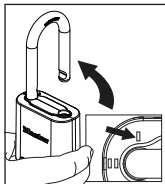


TO OPEN FOR THE FIRST TIME



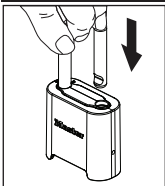
1. This lock is preset to open at 0-0-0-0. Pull shackle to open.

TO SET YOUR OWN COMBINATION

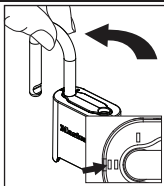


1. OPEN lock and TURN shackle 90° to position **I**.

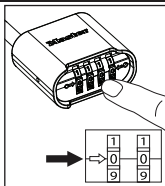
TO SET YOUR OWN COMBINATION



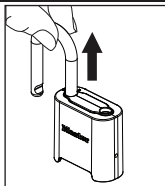
2. PUSH shackle in to lock until it "clicks."



3. TURN shackle another 90° to position **II**.



4. SET dials at indicator line to desired combination.



5. PULL shackle UP. VERIFY dials remained set to your combination before locking. Lock is now set to new combination.

TO LOCK: Close the shackle and **SCRAMBLE THE DIALS.**
TO REOPEN: DIAL your combination and **PULL** shackle.

© 2017

Master Lock Company LLC
Milwaukee, Wisconsin 53210 U.S.A.

www.masterlock.com



Store your
combination at
masterlockvault.com.

P56667