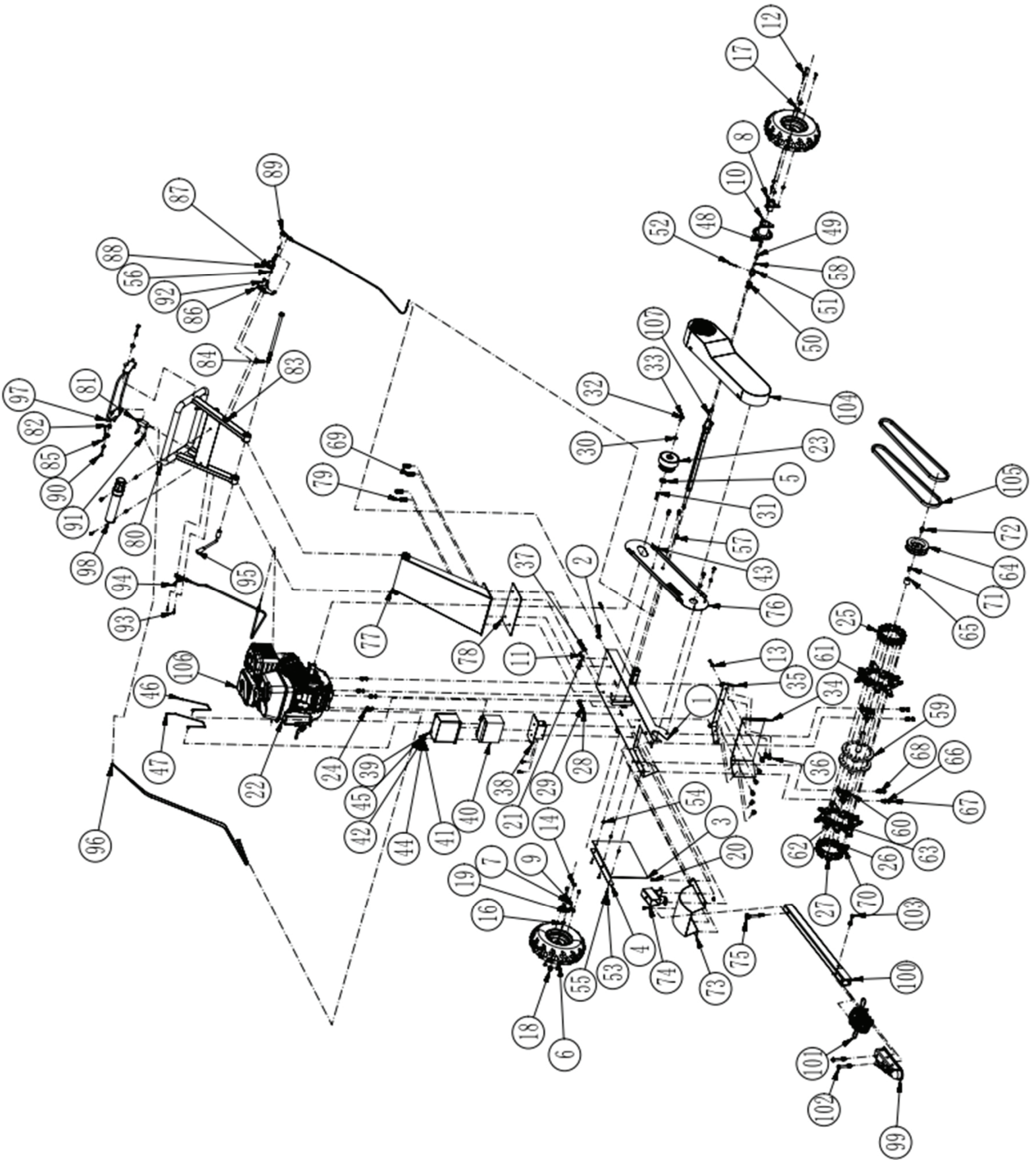
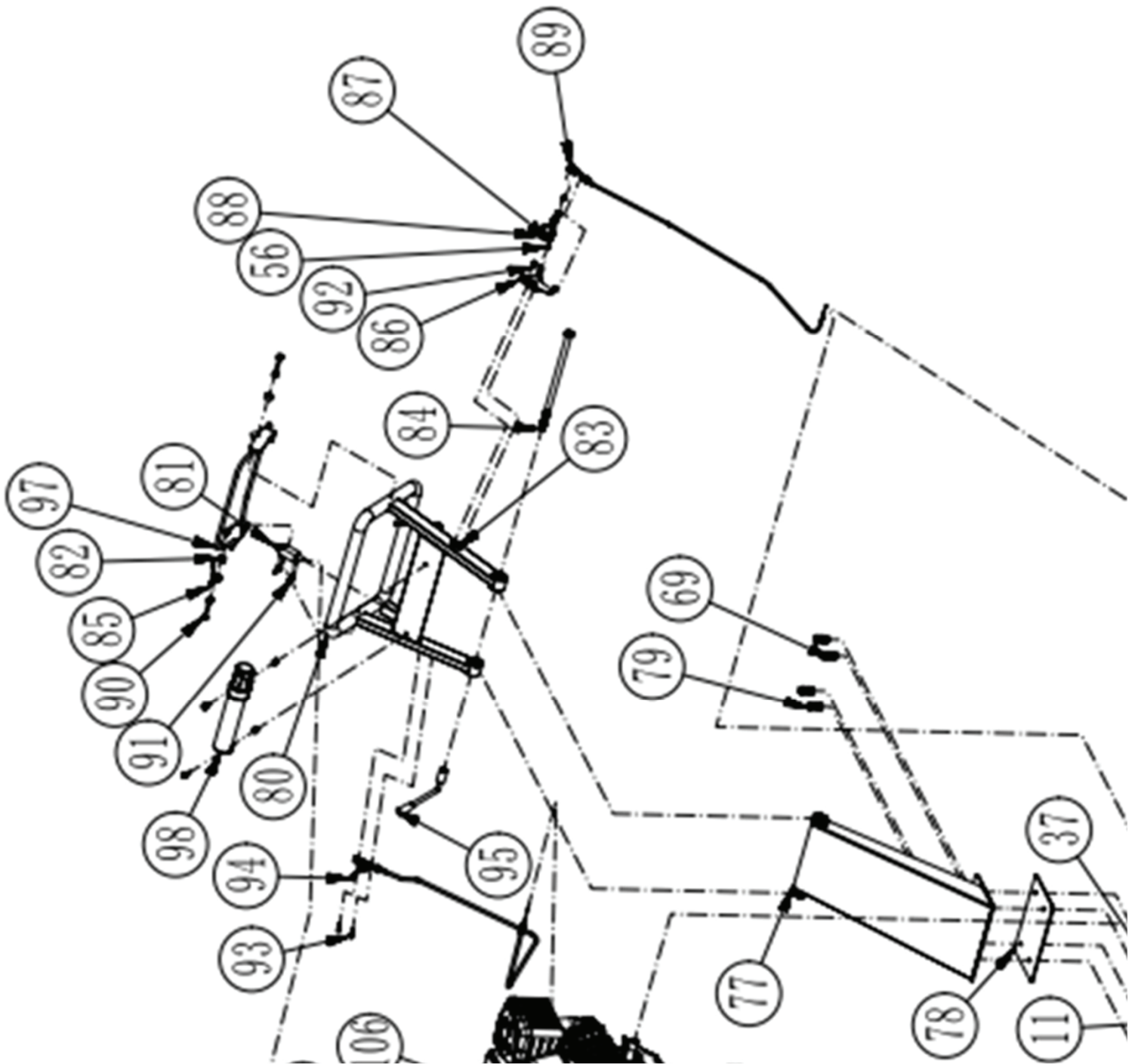


# BBG2X2 PARTS DIAGRAM

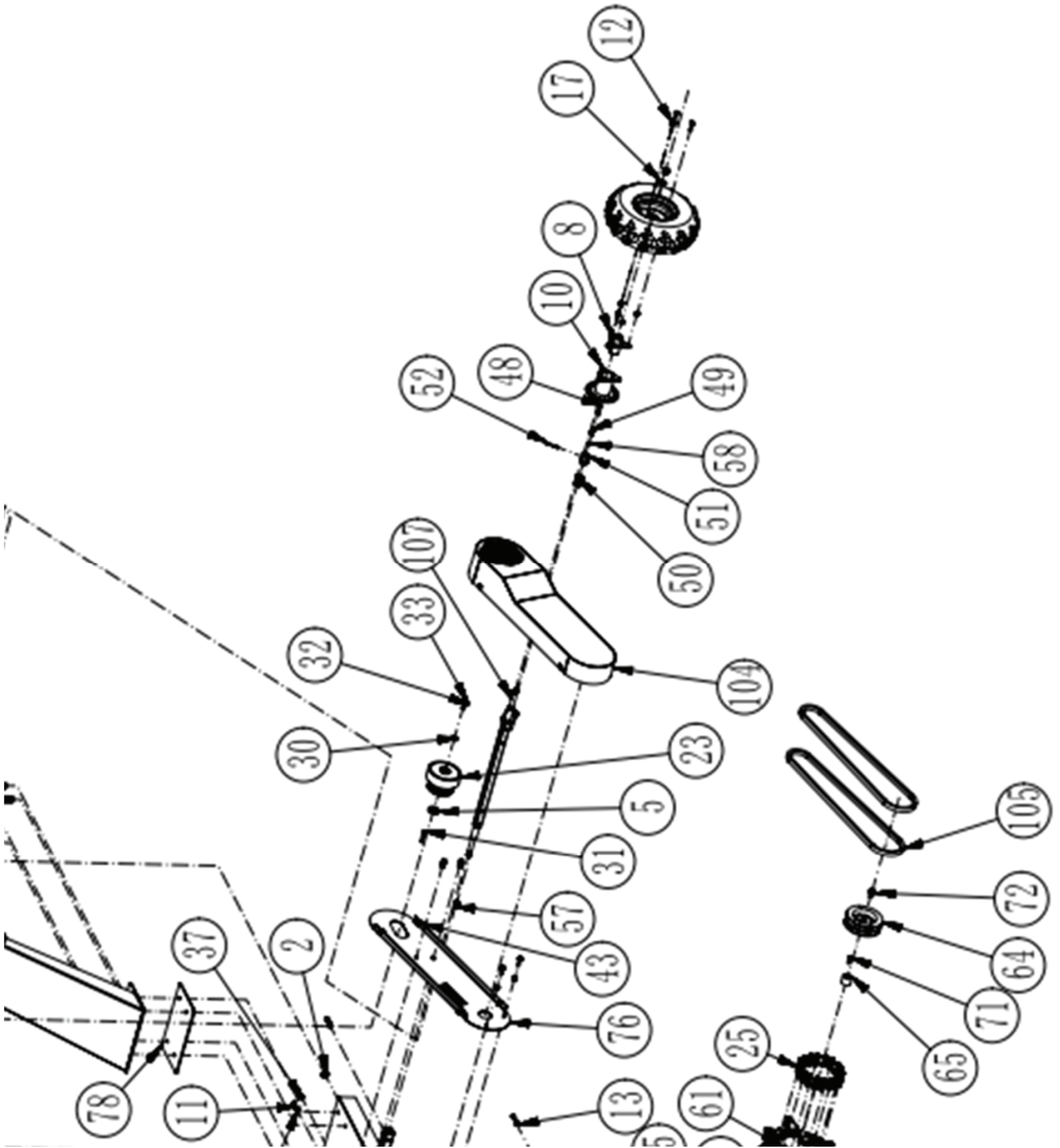


# BBG2X2 PARTS DIAGRAM

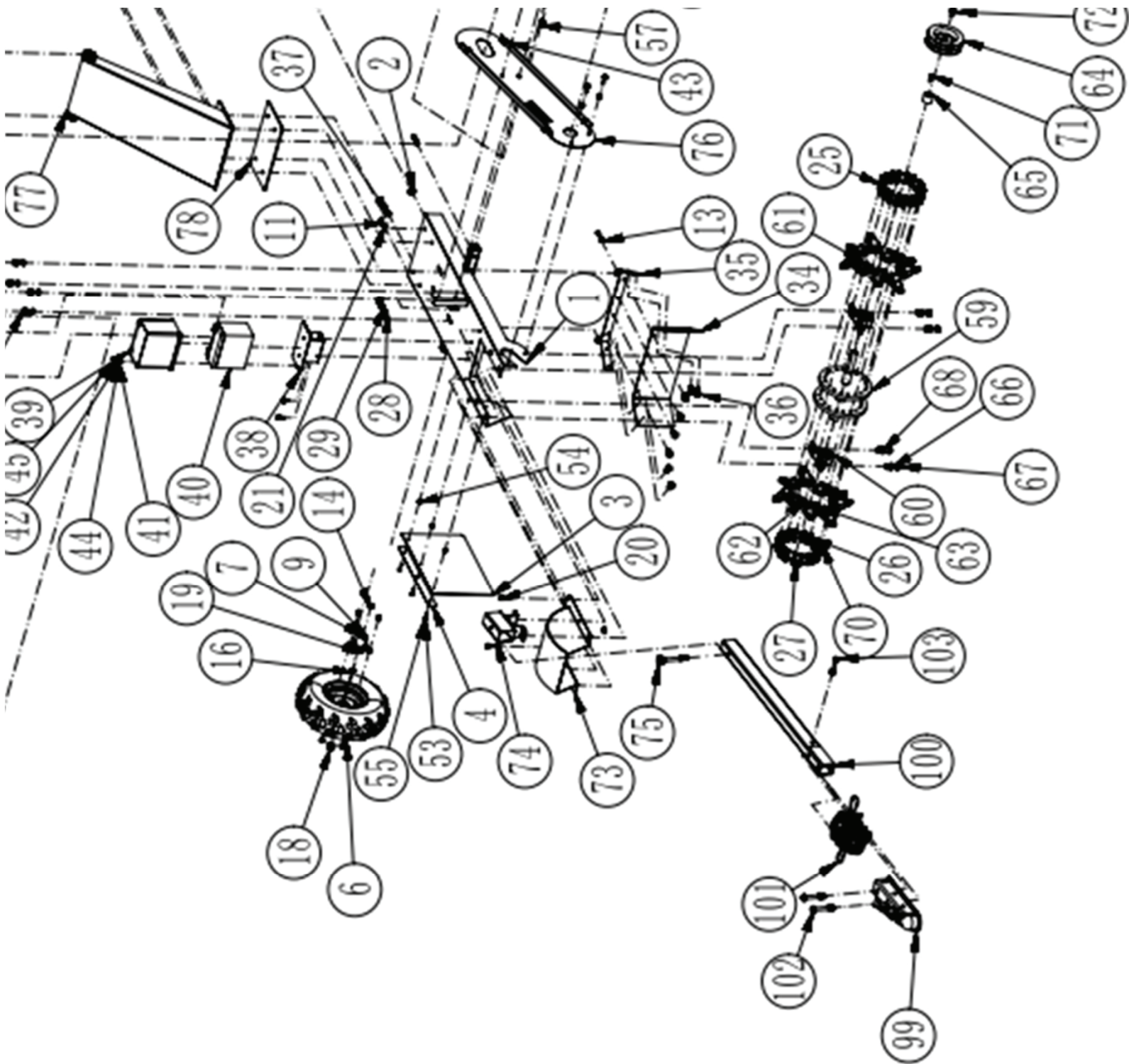




# BBG2X2 PARTS DIAGRAM



# BBG2X2 PARTS DIAGRAM



# BBG2X2 PARTS DIAGRAM

Dash NO	PART NAME	Dash NO	PART NAME
1	Rack welded body	53	M6*25 Hexagon bolts
2	Wire protection rubber ring	54	6 Spring pad
3	Side fenders	55	M6 Flat washers
4	Side fender molding	56	M6 Lock nut
5	Clutch gasket	57	M8 Brake cable adjustment screw
6	145/70-6 tire	58	Brake cable limiter
7	6002 Angular contact ball bearings,	59	Cutter head welding body
8	Left flange	60	P205 Spherical ball bearings with vertical seat
9	32 Sealing ring	61	Right blade welding body
10	Brake chuck welded body	62	Left cutter head welding body
11	M8 Flat washers	63	Middle blade welding body
12	M8*30 Hexagon bolts	64	Cutter pulley
13	M8 Lock nut	65	Cutter pulley spacer
14	8 Spring pad	66	M12 Flat washers
15	Flange bearing inner spacer	67	M12*75 Hexagon bolts
16	Flange outer spacer	68	12 Spring pad
17	M14 Flat washers	69	M12 Lock nut
18	M14 Lock nut	70	M10*40 Hexagon head bolts
19	Right flange	71	Cutter pulley flat key
20	M8*25 Hexagon head bolts	72	M8 Extra large washers
21	M8*45 Hexagon socket head bolts	73	Knife cover welding body
22	Electric door lock	74	Towbar fixing bracket welding body
23	96 125 clutch	75	M12*100 Bakelite bolts
24	M10*45 Square neck bolts with cup head	76	Belt cover inner plate welding body
25	M10 Flat washers	77	Lower handrail welding body
26	10 Spring pad	78	Lower armrest shock pad
27	M10 Lock nut	79	M12*35 Hexagon bolts
28	M12*70 Hexagon bolts,	80	Upper handrail welding body
29	M12 Ordinary nuts	81	Limit switch
30	Clutch outer gasket	82	Emergency stop switch fixing sleeve
31	6.3 Flat key	83	M6 Rivet nuts
32	M10 Extra large washers	84	M16*360 Hexagon bolts
33	3/8-24UNF*30 Hexagon head bolts	85	Torsion Spring
34	Rear fender	86	Brake cable fixing block
35	Rear fender fixing plate	87	Brake cable handle fixing block
36	M8 Large washer	88	Brake cable handle
37	M8*50 Hexagon socket head bolts	89	Brake cable
38	Battery box fixing seat welding body	90	M8*70 Hexagon bolts
39	Battery Box	91	M5*16 Hexagon head bolts
40	6DM14 Battery	92	M6*16 Hexagon head bolts
41	5 Spring pad	93	M6*20 Hexagon head bolts
42	M5 Flat washers	94	Throttle switch assembly
43	M8*20 Hexagonal bolt	95	M16 Handle assembly
44	M5 Lock nut	96	Travel switch line
45	M5*20 Hexagon bolts	97	Emergency stop switch frame welding body
46	Battery positive cable	98	Small tool cup assembly
47	Battery negative cable	99	American trailer head
48	Brake pin	100	Tow bar welding body
49	Compression spring in the bayonet fixing sleeve	101	Chain
50	Compression spring outside the bayonet fixing sleeve	102	M12*90 Hexagon bolts
51	Brake pin fixing sleeve welding body	103	M10*65 Hexagon head bolts
52	5*50 Elastic cylindrical pin	104	Belt cover welding body
		105	B-1448 Ordinary V-belt
		106	RATO 15HP 500CC
		107	Axle welding body