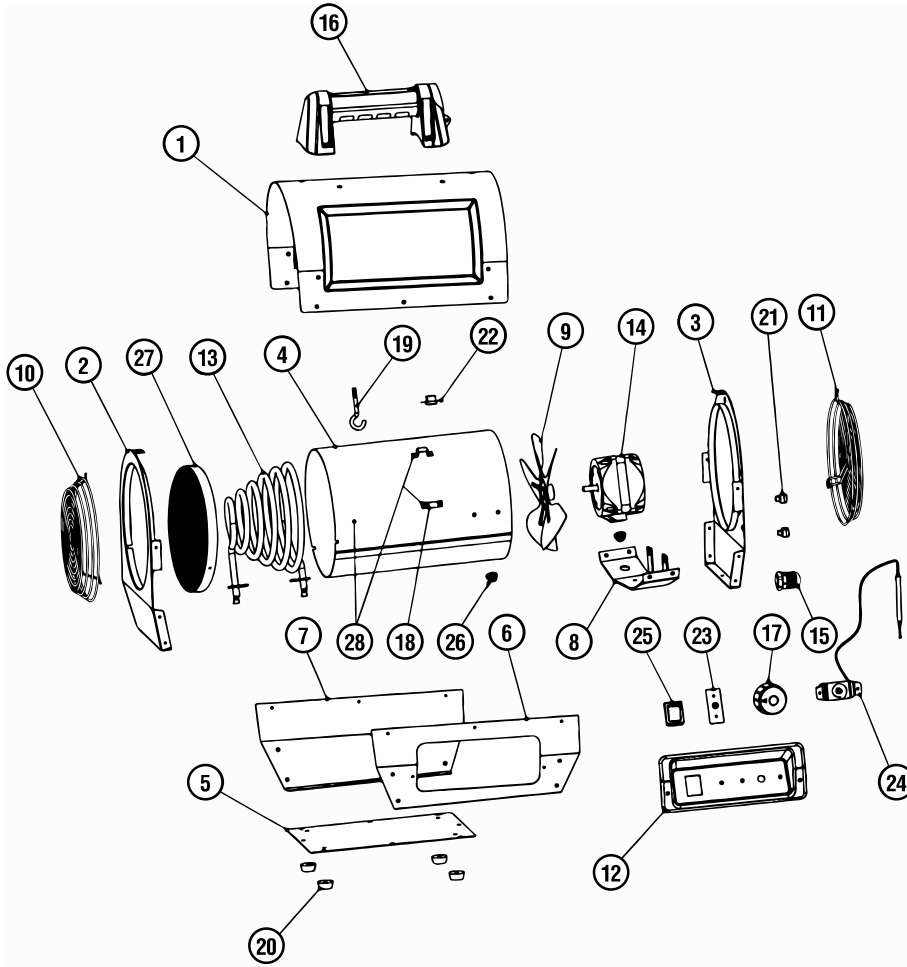


DXH165



Parts List DXH165

REF. #.....ITEM#..... DESCRIPTION	REF. #.....ITEM#..... DESCRIPTION
1.....41010.....COVER, TOP, SHELL, OUTER	15.....41025.....BUSHING, STRAIN, RELIEF
2.....41011.....PANEL, FRONT	16.....40801.....HANDLE, CARRY
3.....41012.....PANEL, REAR	17.....41027.....KNOB, THERMOSTAT, PLASTIC
4.....41013.....SHIELD, RADIATION, TUBE	18.....N/A.....BRACKET, WIRE MOUNT
5.....41014.....BASE, PLATE	19.....41029.....SUPPORT, HEATING ELEMENT
6.....41016.....PANEL, SIDE, LEFT	20.....41030.....FOOT, RUBBER
7.....41017.....PANEL, SIDE, RIGHT	21.....41031.....CLIP, SENSOR, CAPILLARY TUBE
8.....41018.....BRACKET, MOUNT, MOTOR	22.....41032.....SWITCH, HIGH LIMIT, 77C
9.....41019.....BLADE, FAN	23.....41015.....BOARD, CIRCUIT, HIGH LIMIT, INDICATOR
10.....41020.....GUARD, GRILL, FRONT	24.....41034.....THERMOSTAT, TEMPERATURE, AMBIENT
11.....41021.....GUARD, GRILL, REAR	25.....41035.....SWITCH, LIGHTED, ON/OFF
12.....41022.....PANEL, CONTROL, PLASTIC	26.....41036.....BUSHING, PLASTIC, WIRE
13.....41023.....ELEMENT, HEATING	27.....41028.....FRONT SCREEN ASSEMBLY
14.....41024.....MOTOR, FAN	28.....41093.....RADIATION SHIELD TUBE W/BRACKETS
	*.....41097.....Power Cord

*Not shown on drawing.

▲ WARNING:

Use only manufacturer's replacement parts. Use of any other parts could cause injury or death. Replacement parts are only available direct from the factory and must be installed by a qualified service agency.

For Service

Please call Toll-Free 855-805-5745 www.dewalt.com
 Our office hours are 8:00 AM – 5:00 PM, EST, Monday through Friday.
 Please include the model number, date of purchase, and description of problem in all communication.