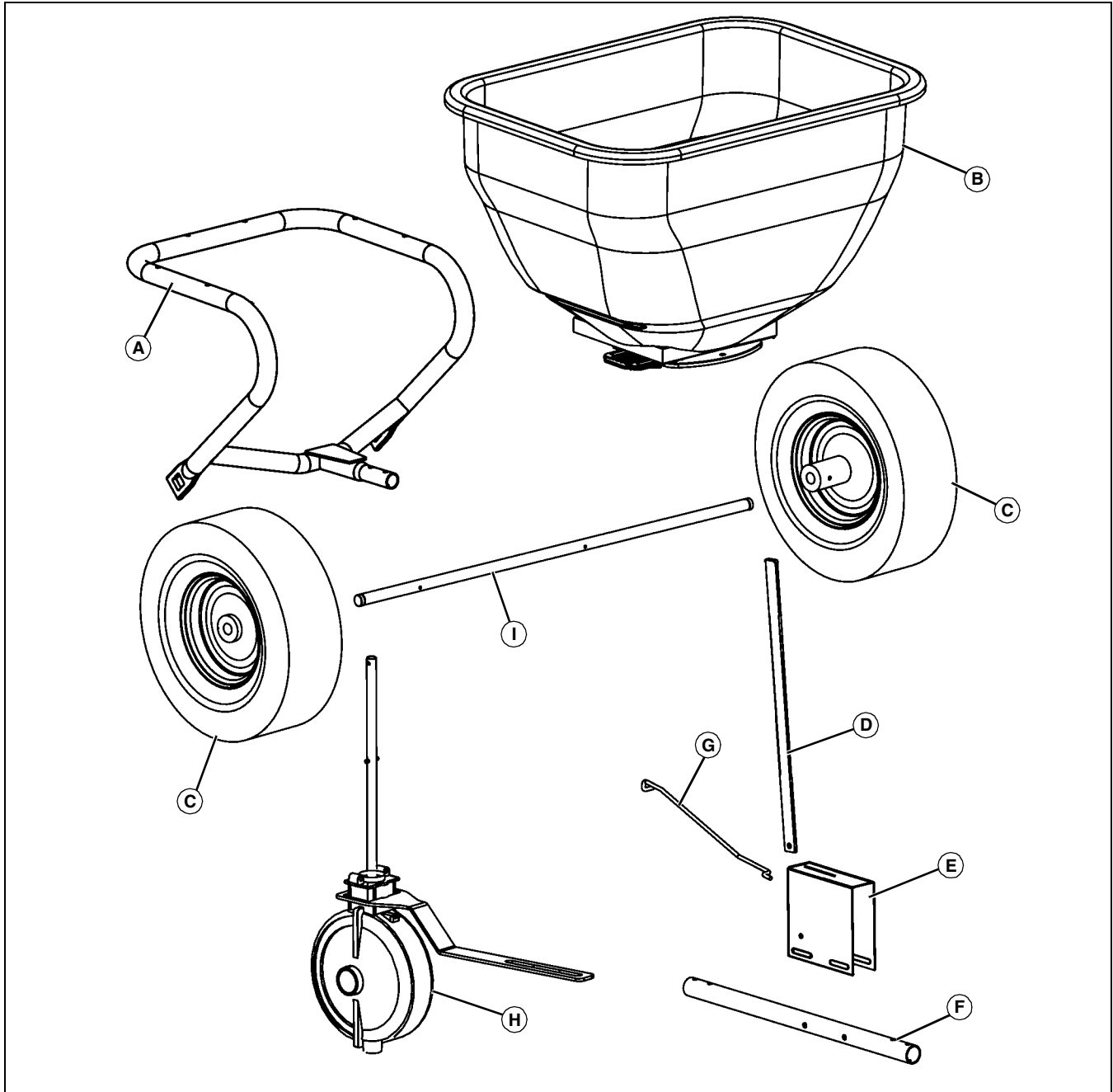


Assembly

Parts in Kit

Main Assembly Parts

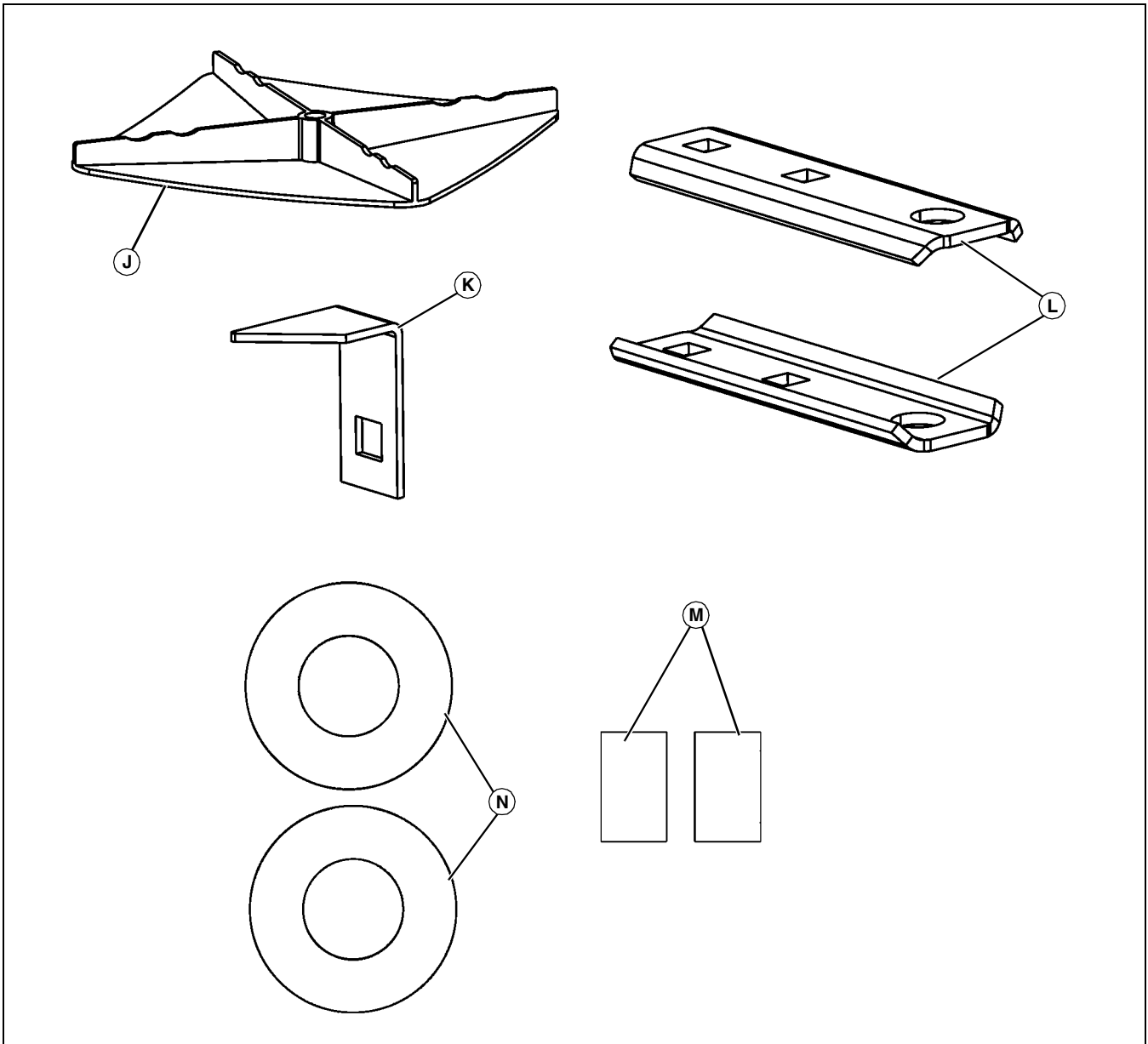
Assembly



MX48215

Qty.	Description	Qty.	Description
1	Support Frame, Hopper (A) F-1029-10	1	Link Rod (G) F-1010
1	Hopper Assembly (B) F-1002 or F-1005	1	Transmission and Bracket (H) F-1015
2	Wheel (C) 1001607	1	Axle (I) F-1013-01
1	Handle, Flow Control (D) F-1008-10		
1	Gage Plate (E) F-1009-10		
1	Tube, Tow (F) F-1023-10		

Hardware Bag (1008385)



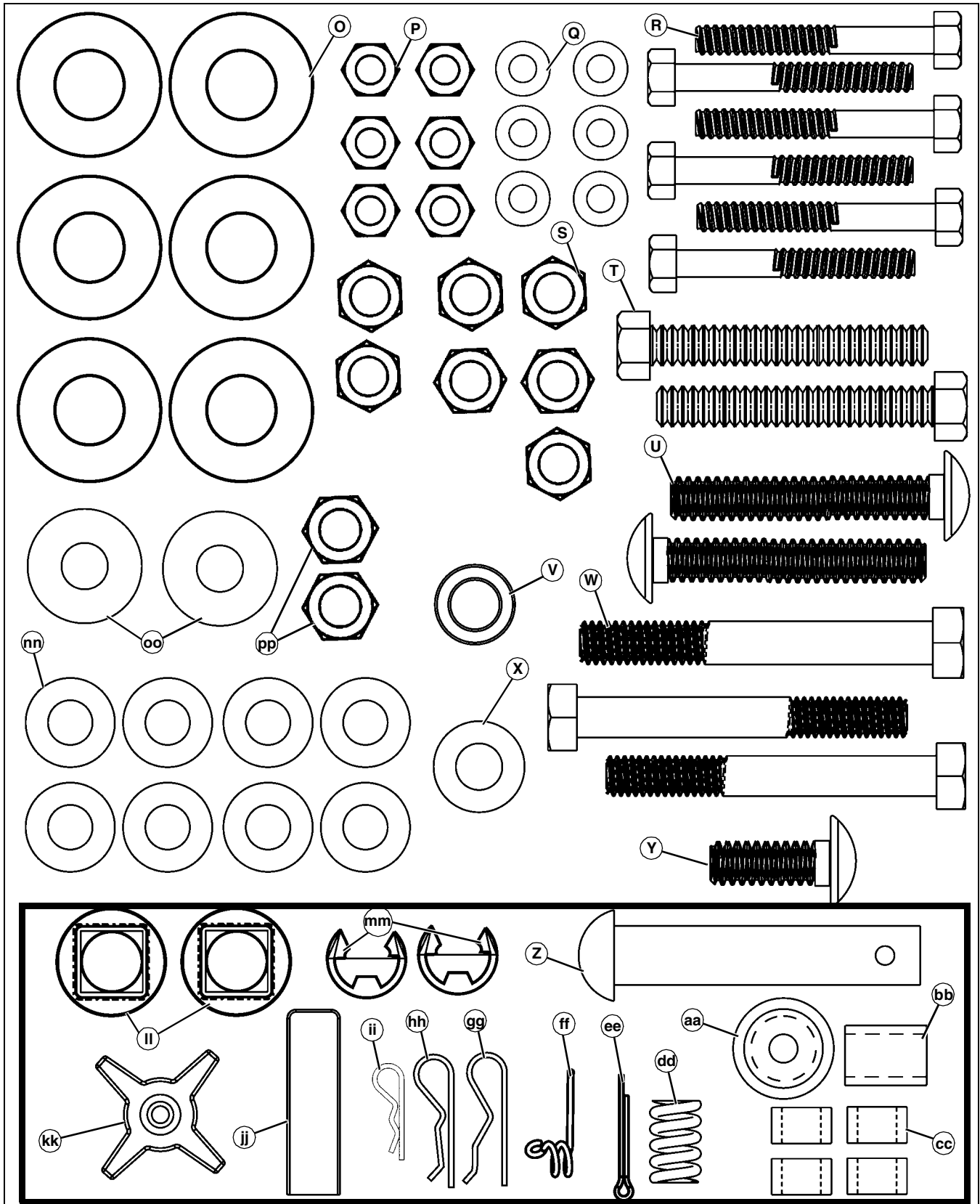
MX48216

Picture Note: Parts shown above are full size except items J, K, and L.

Qty.	Description
1	Fan (J) F-573
1	Handle Stop (K) F-781-01
2	Clevis, Hitch (L) R-892-10
2	Spacer, 3/8 in. wide - for composite (plastic) rim wheels (M) R-892-10
2	Washer, 5/8 in. - for composite (plastic) rim wheels (N) R-892-10

Assembly

Hardware Skin Pack (Z-1912)



MX48217

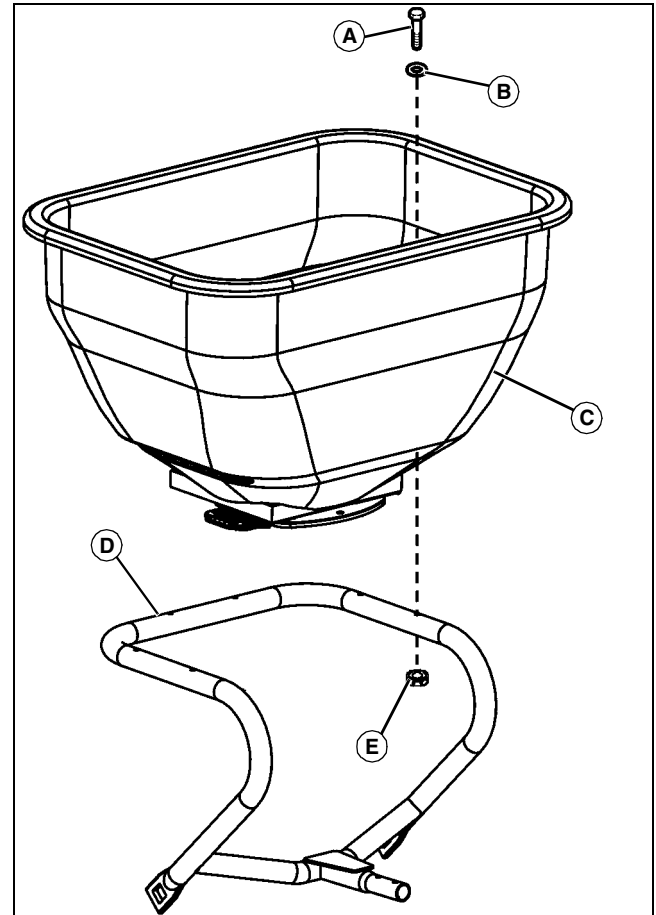
Picture Note: Parts shown above are full size except items in box.

Qty.	Description
6	Washer, Flat, 5/8 in. (O)

Assembly

Qty.	Description
6	Nylon Locknut, 1/4 in. (P) B-4785
6	Nylon Washer, Flat, 1/4 in. (Q) F-575
6	Bolt, Hex, 1/4 x 1-3/4 in. (R) 2M0828SS
7	Nylon Locknut, 5/16 in. (S) B-4786
2	Bolt, Hex, 5/16 x 2-1/4 in. (T) 2M1036P-FT
2	Carriage Bolt, 5/16 x 2 in. (U) 10M1032P
1	O-Ring, 3/8 in. (V) F-365
3	Bolt, Hex, 5/16 x 2-3/4 in. (W) 2M1044P
1	Washer, Curved Spring (X) F-787
1	Carriage Bolt, 5/16 x 3/4 in. (Y) 11M1012P
1	Hitch Pin, 1/2 x 2-1/2 in. (Z) B-3861
1	Fan Driver (aa) F-591
1	Spacer, Latch (bb)
4	Bushing, Pivot Plate (cc) F-1045-01
1	Spring, Latch (dd)
1	Cotter Pin, 1/8 x 1 in. (ee) 50M0416P
1	Agitator Spring (ff) F-436
1	Spring Locking Pin, Open-Style (gg)
1	Spring Locking Pin, Large Closed-Style (hh)
1	Spring Locking Pin, Small Closed-Style (ii)
1	Grip, Flat (jj) R-1882
1	Knob, 4-Prong (kk) F-782
2	Bearing, Axle (ll) F-283
2	Snap Ring, E-Type (mm) F-577
8	Washer, Flat, 5/16 in. (nn)
2	Washer, Special (oo) R-618
2	Nut, Hex, 5/16 in. (pp)

NOTE: Hardware for the next step is found on the Hardware Skin Pack (Z-1912).



MX40299

3. Install six 1/4 x 1-3/4 in. hex bolts (A), and 1/4 in. flat nylon washer (B) through top of hopper (C) and through support frame (D), as shown. Secure bottom of bolt with 1/4 in. nylon locknut (E). To avoid damage to plastic, do not overtighten hardware.

Assemble Hopper to Frame

1. Remove hopper assembly, support frame, and inner carton from box.
2. Remove protective foam from bottom of hopper.