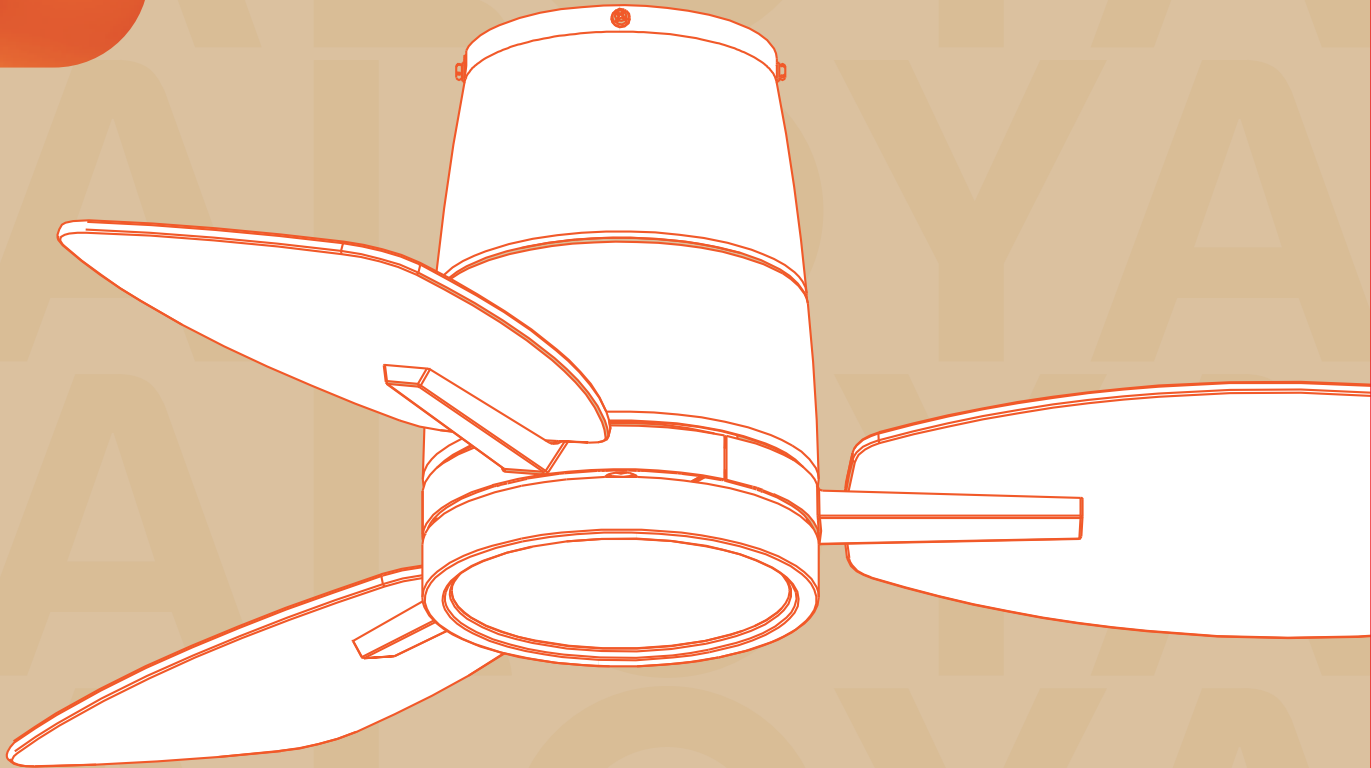


**TALOYA**

# Ceiling Fan with Light



# Technical specifications

## Ceiling Fan Light

**Model:** TLY30-BK-3X-S3 TLY30-WE-3X-S3

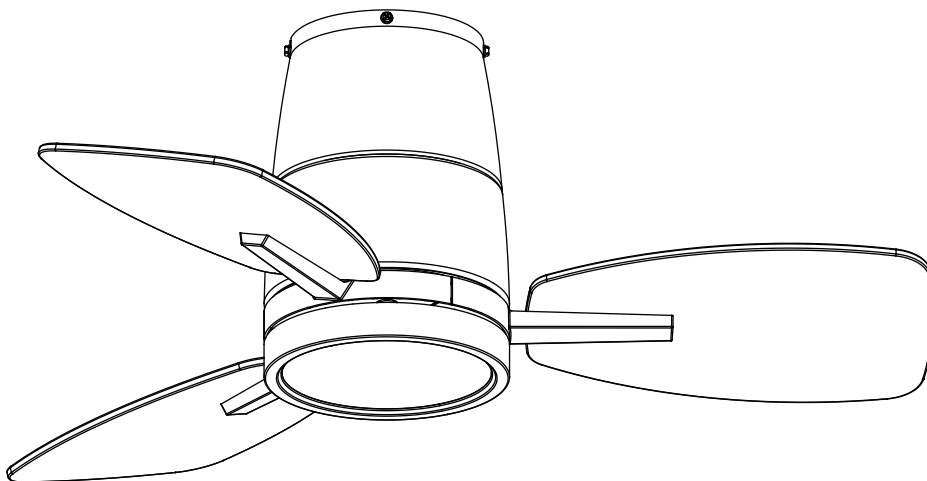
TLY42-BK-3X-S3 TLY42-WE-3X-S3

**Input:** AC120V 60Hz

### Size&Power:

30 inch/40W (25+15W)

42 inch/50W (35+15W)



**WARNING**



✓ ON/OFF switch



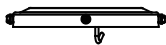
✗ Dimmable switch

Turn power off before installation, inspection or removal.

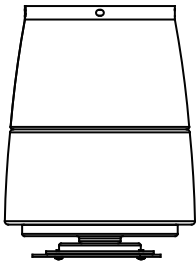
Do not touch the light when it is on or hot. In case of any problem with the fan light, turn power off, neither attempt to repair, unless you're a qualified technician.

Do not expose to water or rain.

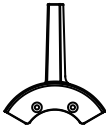
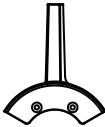
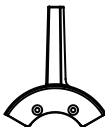
# Packing List



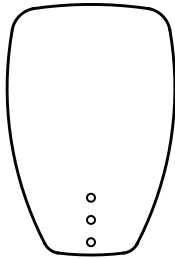
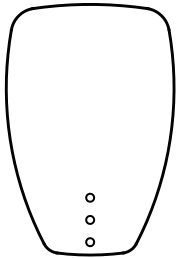
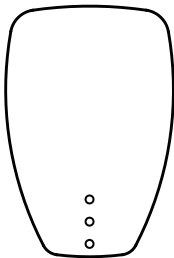
Hanger Bracket



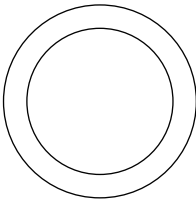
Fan Motor Assembly



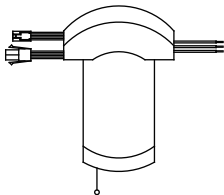
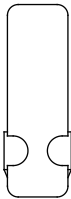
Blade Arm



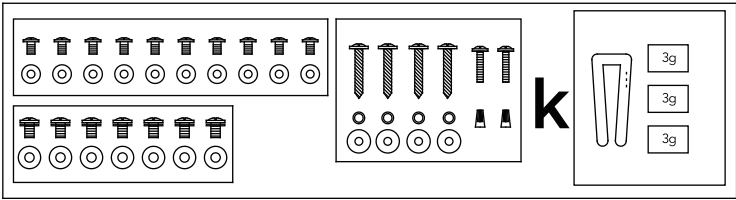
Blade



Lamp



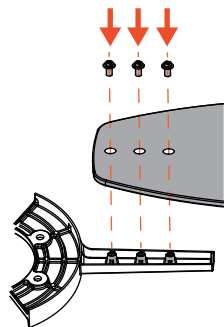
Remote Control



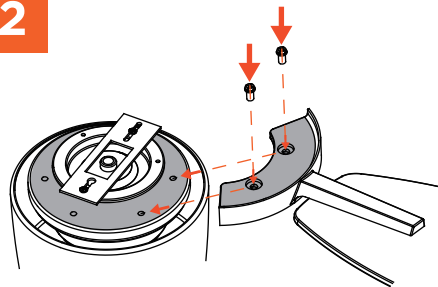
Screw Pack

# Installation Guide

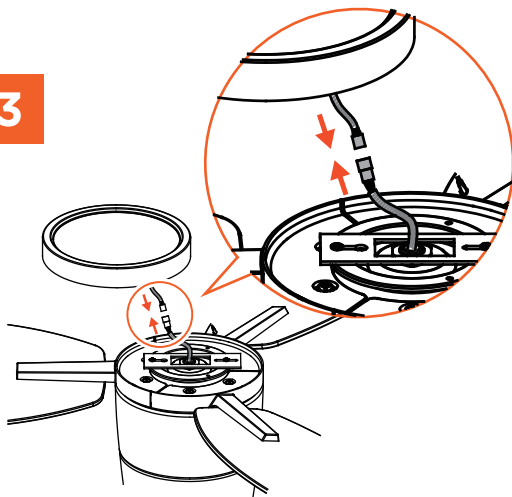
1



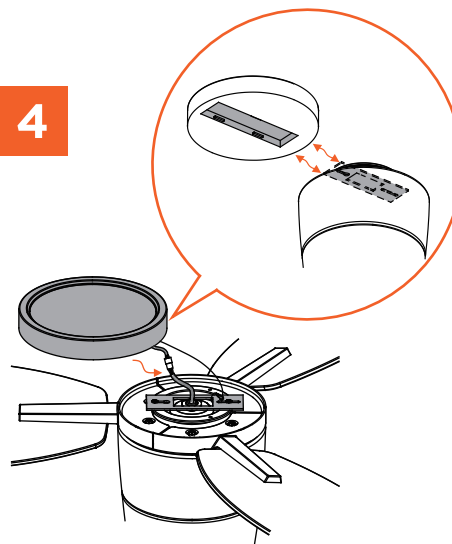
2



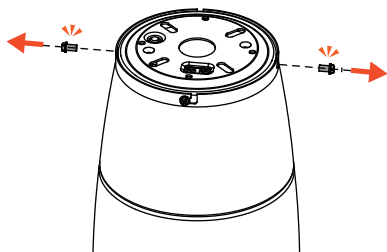
3



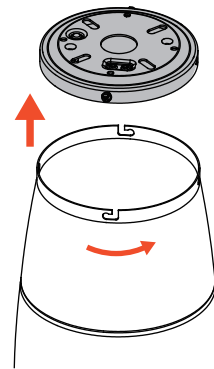
4



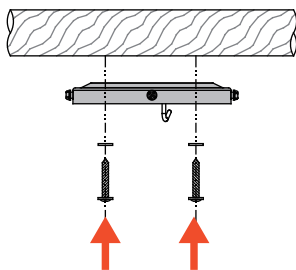
5



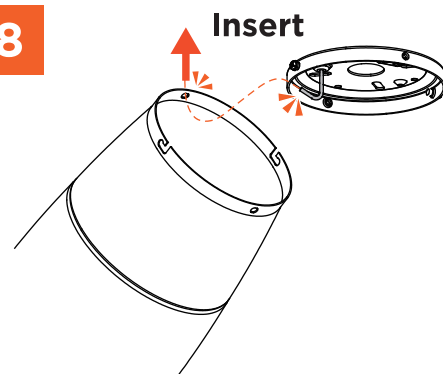
6



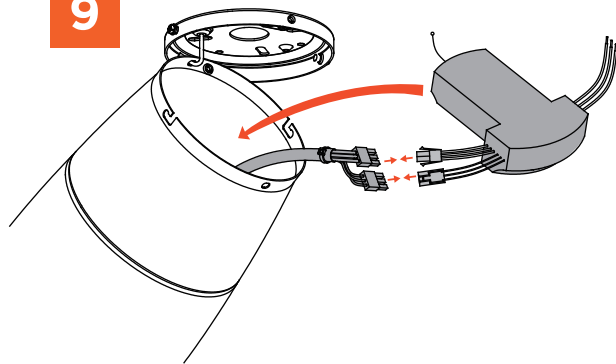
7



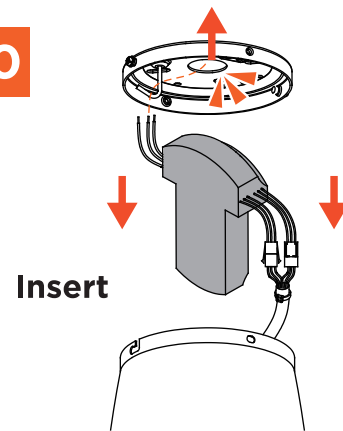
8



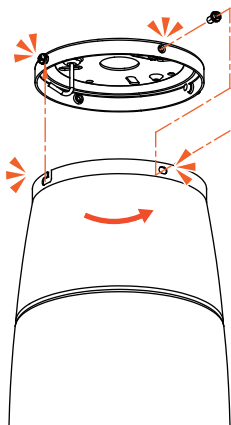
9



10

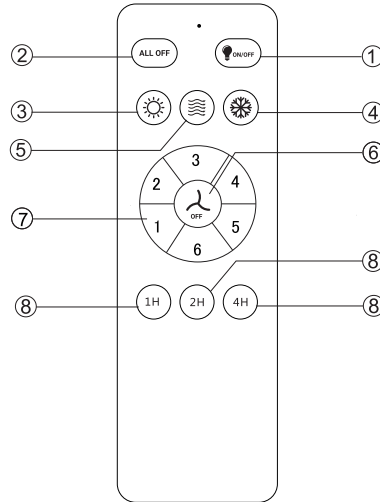


11



## Function Introduction

- ① Light On/Off  
(switch 3 colors (soft white/bright white/daylight)  
within 7 seconds)
- ② Fan and Light Off
- ③ Fan Forward
- ④ Fan Reverse
- ⑤ Natural Wind
- ⑥ Fan Off
- ⑦ Speed Control
- ⑧ Timer  
Once pressing the timer key, please  
do not press any other keys. Or the  
order will be cancelled.



### KINDLY REMINDERS:

If the remote control cannot control the fan, please follow the steps below to troubleshoot:

1. Ensure that the battery is correctly fixed and has plenty of charge.

Make sure that the positive and negative poles of the battery are connected in the right order.

Low battery voltage can decrease the range and sensitivity of the remote.

If the battery voltage is low or run out of use, please replace it.

2. Try re-pairing the remote

Power on the fan, when you hear the sound of "beep", please press the "⌂" button until you hear a long beep sound, it means successful.

3. If the above does not solve the problem, please contact our customer service team within your order and they will get back to you within 24 hours.



TALOYA

“What we can offer you is not only a light ,  
but also an attitude towards life „

info@taloya.com  
www.taloya.com