

Installation Instructions

1.1 Preparation



WARNING

Severe Injury

Hood may have very sharp edges. Please wear protective gloves if it is necessary to remove any parts for installing, cleaning or servicing.



WARNING

Excessive Weight

Require two or more persons to move and install this range hood. Spinal or other bodily injuries could occur if it is not followed.

Advanced Preparations:

- Read the entire installation guide and users manual thoroughly, understand instructions and warnings.
- Be familiar with the controls of the range hood by reading through Range Hood Operations.
- Place all supplied parts and required hardware on a flat, stable surface and verify the existence of all supplied parts.
- Place the range hood on a flat, stable surface. Connect the range hood to a designated standard outlet (please refer the product label for the suitable voltage of this unit) and verify no debris has entered the duct openings, then turn on the range hood. Verify all operations of the range hood by referring to Range Hood Operations.
- Carefully remove the white or blue plastic protective coat from the range hood.

Preparations:

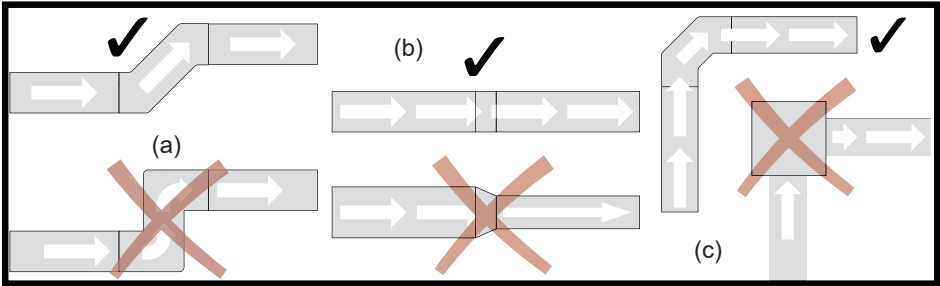
NOTE: To avoid damage to your hood, prevent debris from entering the vent opening.

- Decide the location of the venting pipe from the hood to the outside. Refer to Venting Methods.
- A straight, short vent run will allow the hood to perform more efficiently.
- Try to avoid as many transitions, elbows, and long run as possible. This may reduce the performance of the hood.
- Using 45 degree elbows is better than using 90 degree elbows.
- IMPORTANT: Peel white plastic protective coat off the hood, if any.
- Use aluminum tape to seal joints between pipe sections.

Installation Instructions

DO' S AND DON' TS FOR DUCT VENTING

- a. Avoid the use of sharp elbows. Use 45 degrees instead, if possible.
- b. DO NOT use REDUCERS. Keep the size of the duct the same, as per the manual. A reducer will reduce the CFM of the hood and increase the noise.
- c. DO NOT use plenum boxes. Boxes create turbulence and make the hood inefficient. Use a smooth elbow to guide the air outdoors.



THE HOOD MUST BE TESTED BEFORE INSTALLATION.

We will not be responsible for additional labour costs related to reinstallation of the hood due to transportation internal damage or wiring issues.

Calculating Vent System Length

To calculate the length of the system you need, deduct the equivalent feet for each vent piece used in the system from the recommended maximum duct run.

Duct Run Calculation:	
Recommended maximum run	
6" round duct	50 ft
Duct piece deduction	
Each 90° elbow used	9 ft
Each 45° elbow used	5 ft
Each 6" to 3¼" x 10" transition used	7 ft
Side wall cap with damper	9 ft
Roof cap	9 ft

Duct Run Calculation example:

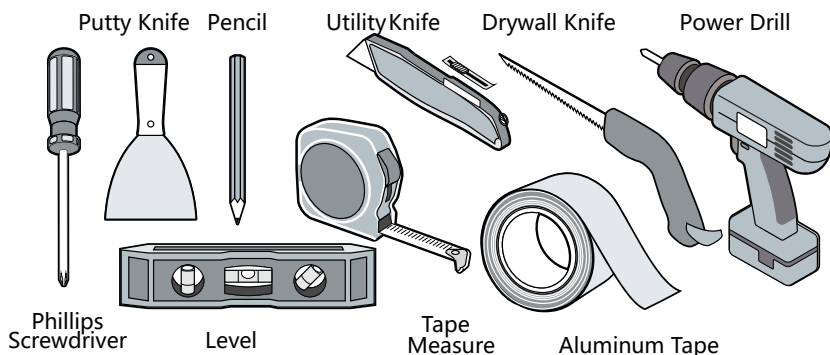
One roof cap, two 90° elbow, and one 45° elbow used:

$9\text{ft} + 9\text{ft} + 9\text{ft} + 5\text{ft} = 32\text{ft}$ used.

Deduct 32ft from 50ft, 18ft maximum available for straight duct run.

Installation Instructions

1.2 Tools Required



1.3 P02 Series Installation (P02-G / P02-G-B / P02-K / P02-K-B)



WARNING

Severe Injury

Hood may have very sharp edges. Please wear protective gloves if it is necessary to remove any parts for installing, cleaning or servicing.

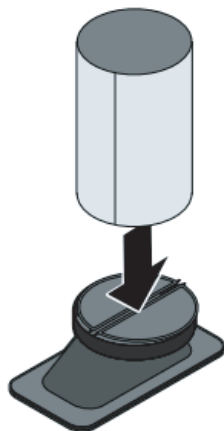


WARNING

Excessive Weight

Require two or more persons to move and install this range hood. Spinal or other bodily injuries could occur if it is not followed.

INSTALLATION



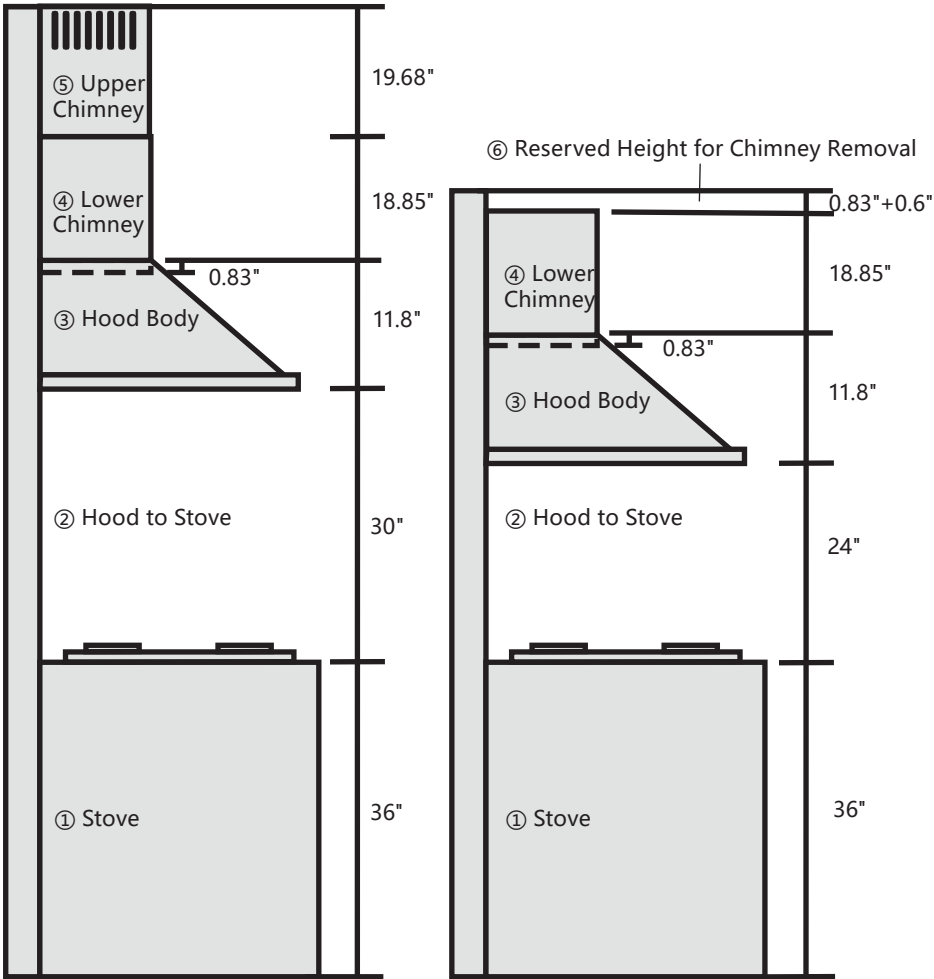
The adaptor can be used to protect the faps.

NOTE: **DO NOT USE** threaded drywall anchors to support the hood when mounting the hood on sheetrock. Mounting the hood on wall studs or lumbers is highly recommended.

CAUTION: Make certain the range hood is secure before releasing! For safety purpose, pre-drilled mounting holes are provided through the back of the hood. For a more secure installation, use as many mounting holes as needed to secure from the inside of hood.

Installation Instructions

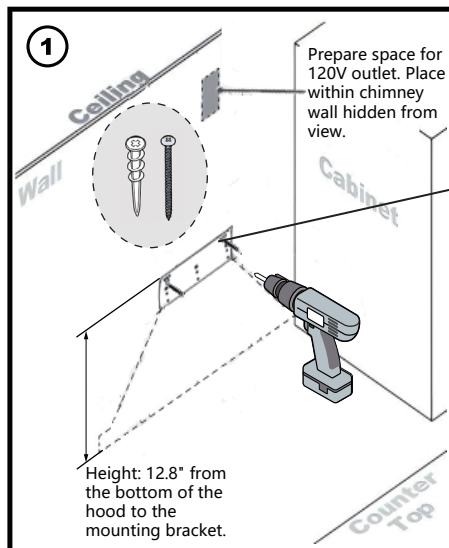
Ceiling Height Guidelines



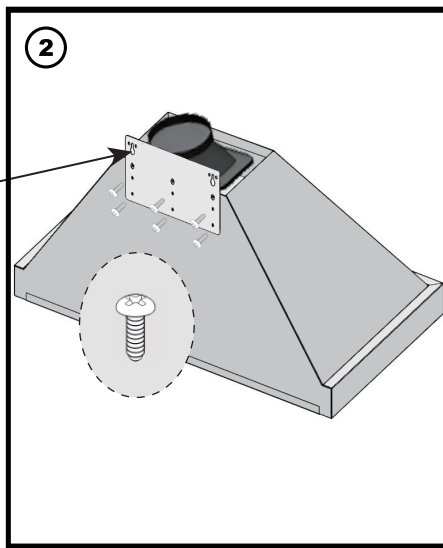
Height	①	②	③	④	⑤	⑥	Recommend Height
Max	36"	30"	11.8"	18.85"	19.68"	/	9.7'
Min	36"	24"	11.8"	18.85"	/	1.43"	7.7'

Installation Instructions

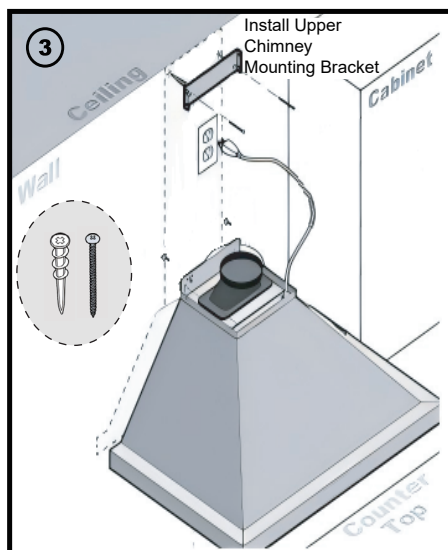
a. Installation (Masonry/Concrete Wall)



(1) Using the hood mounting bracket, mark and drill the holes. Insert 2 wall bolts and tighten the screws (leave a small gap between screw heads and wall).



(2) Secure the hood mounting bracket to the back of the hood.



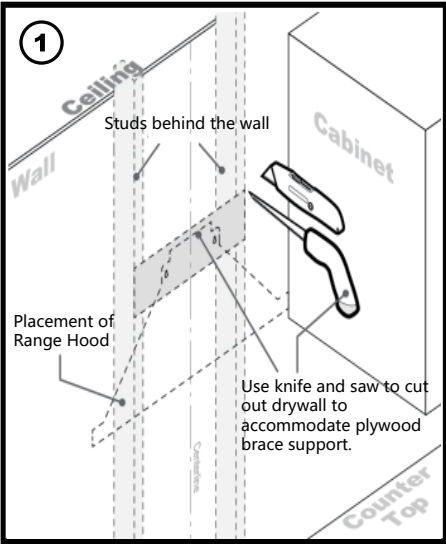
(3) Hang the range hood onto the installed screws, then tighten them to secure the unit in place. Fasten screws into the remaining holes on the hood mounting bracket.

Install the upper chimney mounting bracket at the previously measured location.

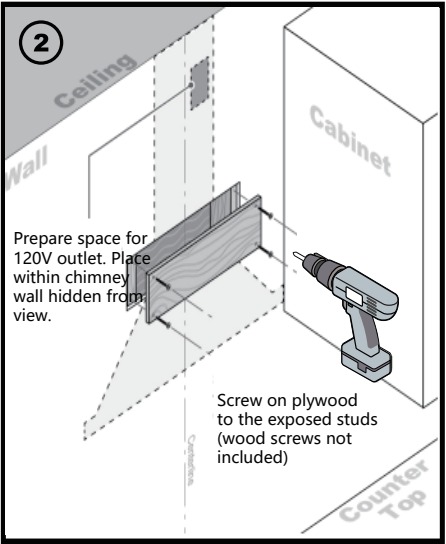
Warning: Before drilling, scan for hidden utilities. Improper drilling can cause serious damage. Always use a hammer drill and masonry anchors for secure installation.

Installation Instructions

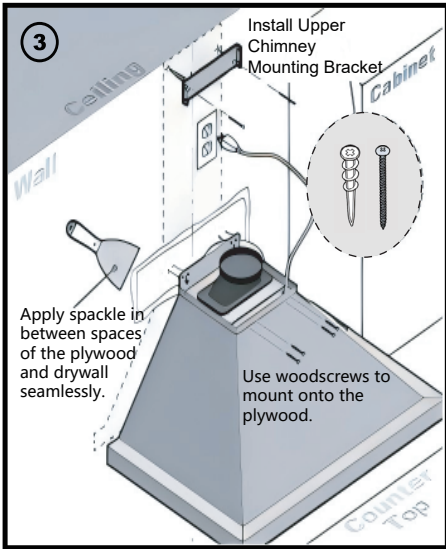
b. Installation (Drywall/Stud Wall)



(1) Use knife and saw to cut out drywall to accommodate a plywood brace support. The inserted plywood should be the same depth as the drywall slab it is replacing.



(2) Screw on plywood to the exposed studs (woodscrews not included). Prepare space for 120V outlet. Place within chimney wall, hidden from view.

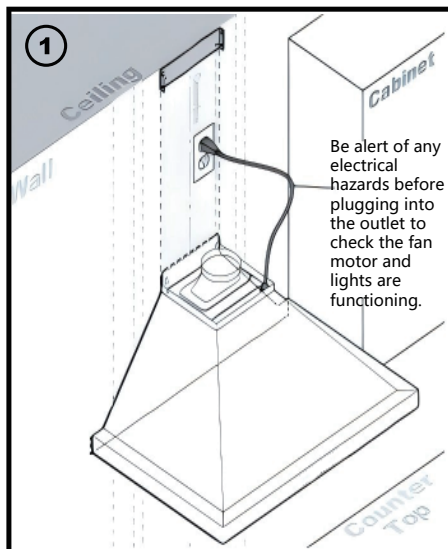


(3) Apply spackle in between spaces of the plywood and drywall seamlessly. Sand down any rough spackle to smooth out. Paint area if required. Use the drywall plastic anchors and metal screws to install the mounting brackets to prepare for the upper chimney. Fasten woodscrews to mount onto the plywood based on your earlier measurements already established. Install the upper chimney mounting bracket at the previously measured location.

Warning: Before installation, use a stud finder to locate the wall studs. All critical screws for the mounting bracket must be driven securely into the studs for safe support.

Installation Instructions

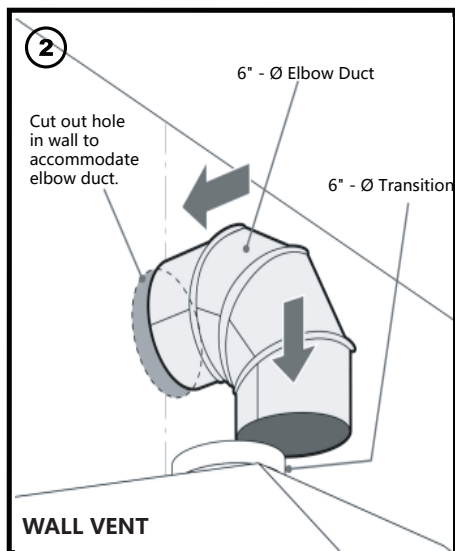
Installation (Continued)



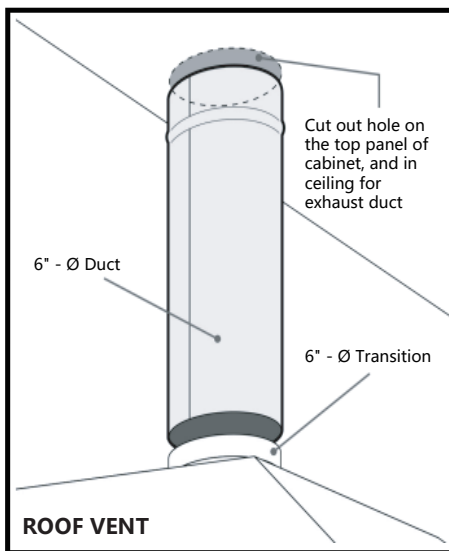
(1) Connect the range hood to a designated standard outlet (please refer to the product label for the suitable voltage of this unit). Check the fan motor and lights are functioning.

Be alert of any electrical hazards and refer to the product label for the suitable voltage of this unit.

SAFETY WARNING: Risk of electrical shock. This range hood must be properly grounded. Make sure this is done by qualified electrician in accordance with all applicable national and local electrical codes. Before connecting wires, switch power of at service panel and lock service panel to prevent power from being switched on accidentally.



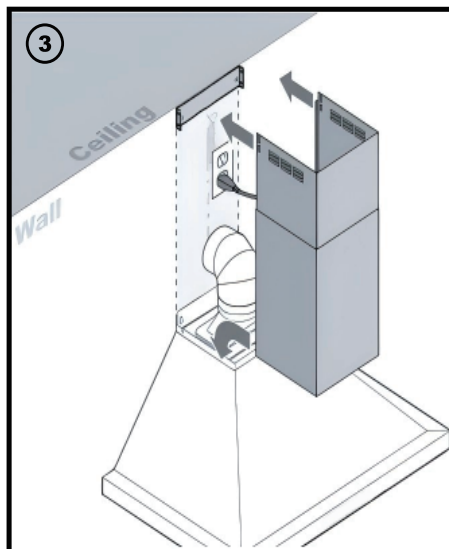
(2) Distance from wall to transition circumference edge for 6".



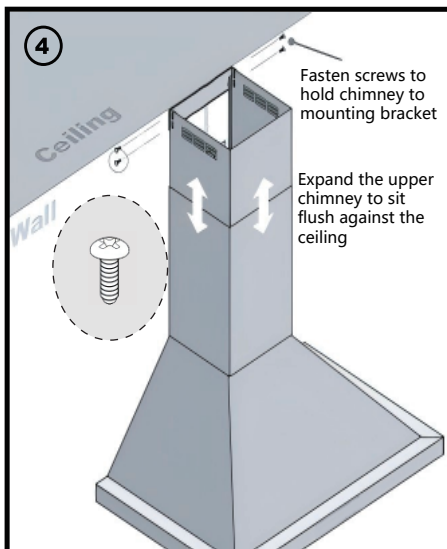
Use 6" round steel pipe to connect the exhaust on the hood to the duct work above. Use aluminum tape to make all joints secure and air tight.

Installation Instructions


Installation (Continued)



(3) Insert both chimneys onto the range hood. They should be able to slide into the gap of the top housing.



(4) To avoid scratching the chimney, extend the upper chimney slowly and carefully to the chimney-mounting bracket and tighten screws.



WARNING
Hazard of electrical shock!
DO NOT perform service on an electrically live system. Disconnect the main electrical supply before servicing this device. Touching electrical connectors or other exposed electrical circuitry inside this range hood when they are energized could result in death, serious bodily injury, or property damage.

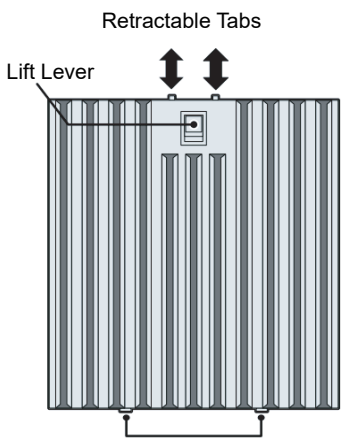


WARNING
Severe Injury
Rotating fan can cause severe injury. Stay clear of fan when motor is running.

Installation Instructions

Installation (Filter)

BOTTOM VIEW

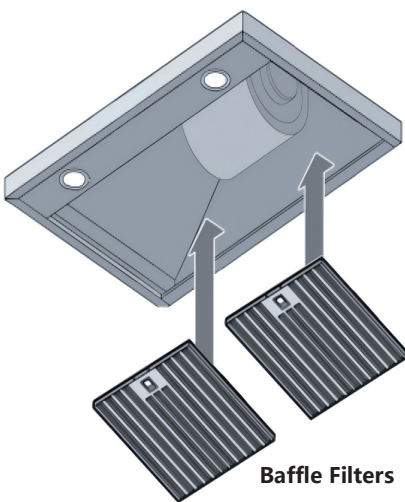


Retractable Tabs

Lift Lever

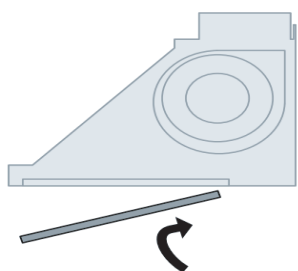
Tab Inserts

*****Before installing, remove protective white film*****

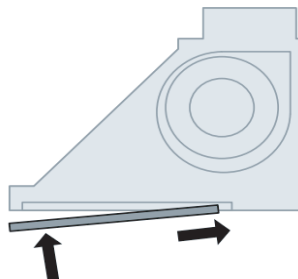


Baffle Filters

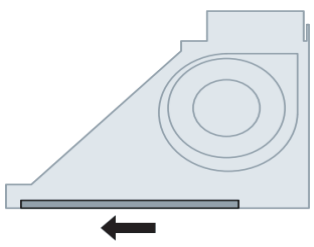
SIDE VIEW



Angle filter and direct tab inserts toward the aft slot of the range hood opening.



While continuing to install the filter, ensure you lift the lever for the retractable tabs to clear way for flush insertion.



When filter sits flush within the opening, release the lever to lock in place.

Installation Instructions

1.4 Ductless Installation (Recirculation Mode)

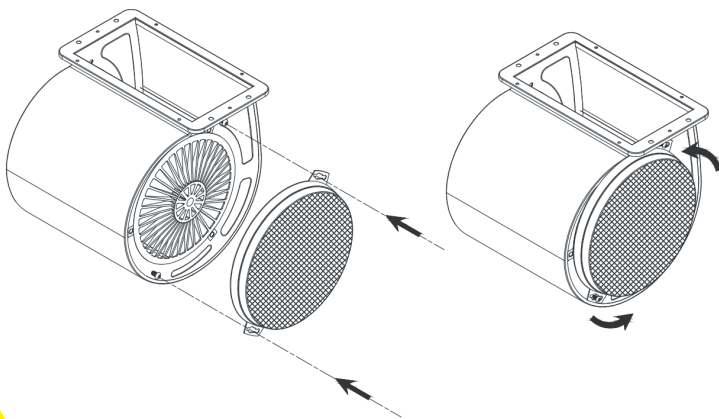
If you choose the ductless installation method, simply install the included charcoal filters. Once the filters are in place, you do not need to connect a duct to the outside. The hood will filter cooking fumes and recirculate clean air back into the room.

Important Notes:

- Do not install the vent adapter when using charcoal filters.
- Airflow will be reduced after installing charcoal filters.
- To ensure proper ventilation, your cabinet should have exhaust openings that allow air to escape into the room. Do not keep the cabinet completely sealed. We recommend at least one 6-inch round vent hole.
- Installing the charcoal filter for ductless (recirculation mode) will result in increased operating noise and reduced airflow.

Replacing Charcoal Filters:

For best performance, ducted installation is recommended whenever possible. However, if your hood is set up for recirculation, charcoal filters should be installed and replaced periodically to maintain effective air purification.

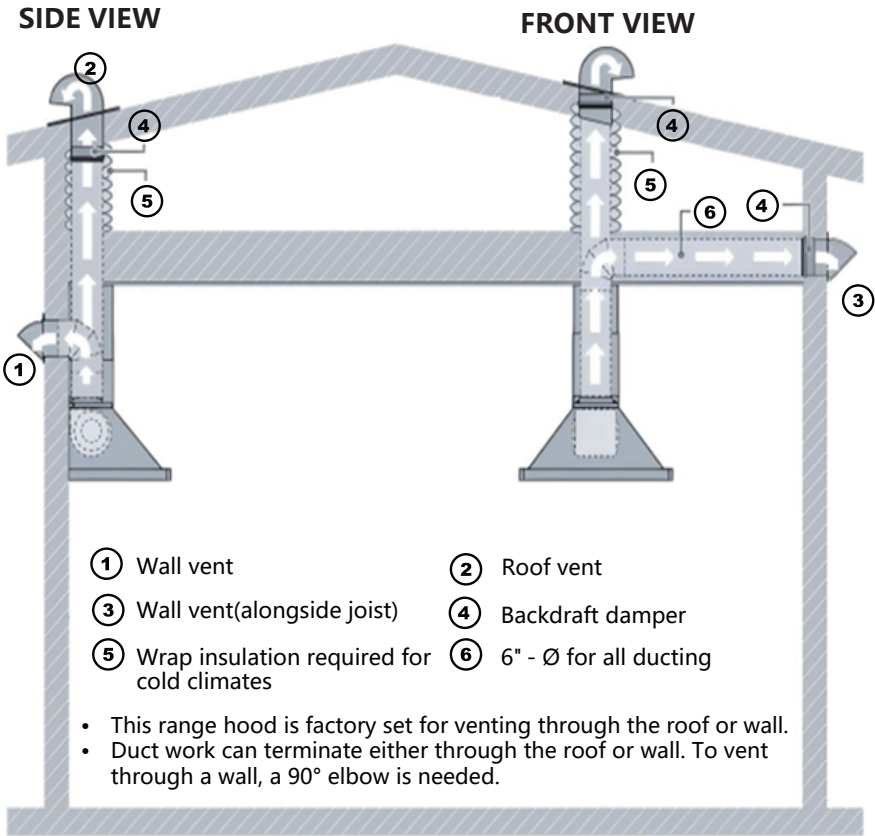


WARNING

Never work on or clean the range hood while the power is on. Always unplug the unit or switch the electrical breaker to the off position.

Installation Instructions

1.5 Venting Methods



- NEVER exhaust air or terminate duct work into spaces between walls, crawl spaces, ceiling, attics or garages. All exhaust must be vented to the outside.
- Use metal/aluminum duct work only.
- Fasten all connections with sheet metals crews and tape all joints with certified Aluminum Tape.
- Use caulking to seal exterior wall or roof opening around the cap.
- Colder climates require wrapping insulation around the ducts and optional blowers.
- The system must have a Backdraft Damper.