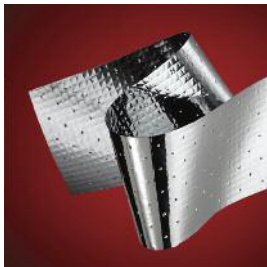


Installation Instructions for Reflectix, Inc. Radiant Barrier



The product consists of two outer layers of 95% reflective film bonded together enclosing a heavy gauge woven polyester fabric (to provide structure for staples). The product is available in a roll 48 inches wide by 125 linear feet.

Product:

RB4812550

[Click here for additional product information.](#)

Pdf Links:

Note: The Attic and Cathedral Ceiling applications have regional recommendations on installation. Please be sure to review the information on the links below to understand which methods are recommended for your location.

[Attic](#)

[Cathedral Ceiling](#)

[House Wrap](#)

