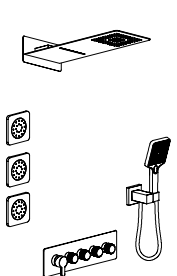


Instruction for installation and use of shower head



The product is subject to material object
Thank you for purchasing this product. Please read this instruction
carefully before using it.

This product is dedicated to your health, make your life more comfortable, perfect and fashionable.
All information is written based on the latest published product information to write the characteristics, packaging or product types.
The manual includes important contents about installation, maintenance and cleaning. Please give these materials to users for reading.

Contents

1. Installation environment	1
2. Install the auxiliary tool	2
3. Packing list	3
4. Installation discussion	4
5. Installation matters and methods	5
6. Repair and maintenance	11

1. Installation environment

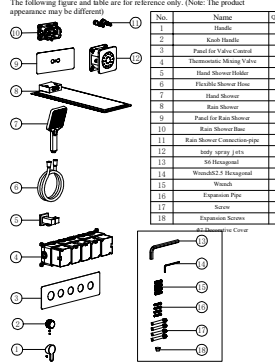
- If fishes indicate discomfort when the water inlet pipe is properly installed and has been flushed with water, ensure its position in the water inlet pipe.
- If the fish are not comfortable, the water inlet pipe may be too closed off by the factory. Please see the disclaimer in 4.2.1.
- The size of the purchased fan matches the size of the faucet mounting hole.
- Inlet water pressure requirement: 0.05MPa; inlet pressure: 0.05MPa. To ensure the water pressure of the faucet, please keep the water supply pressure of the water and water balance.
- Water temperature requirements: the cold water temperature is 10-25°C and 20-28°C, the hot water temperature is 35-45°C. The water temperature of the faucet is 10-45°C. The temperature in 10°C-14°C (faucet products are suitable for low temperature) and 35°C-45°C (faucet products are suitable for high temperature) is not recommended. Do not use it in other cold environments, seawater or other high-pressure environments. The product is not suitable for use in high-pressure environments. The operating pressure of the product is no more than 0.1MPa (range 35-25°C to two phases) (15PSI).
- The faucet is not suitable for use in the following environments:
 - The faucet is not suitable for use in water and blue indoor swimming pools.
- When installing and using the faucet, please use normal torque to prevent the faucet from being damaged.
- The faucet is not suitable for use in the following environments:
 - During the installation of discolored products, clean faucet and wash dripping on the faucet.
- If customers go out for a long time and do not use the faucet for a long time, please check the main valve of the faucet and the fan on the faucet switch.

2. Installation of auxiliary tools



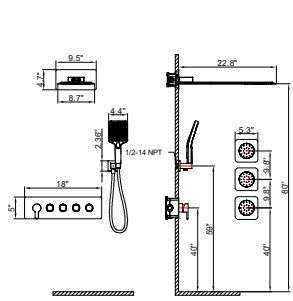
3. Packing list

When you open the product package, please count the accessories with the packing list. If there is a shortage, please contact the dealer soon.



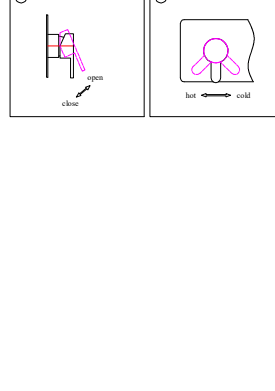
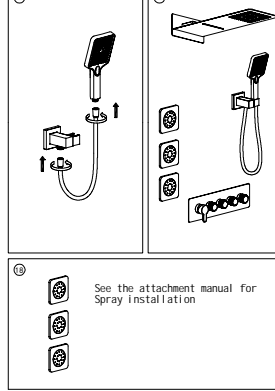
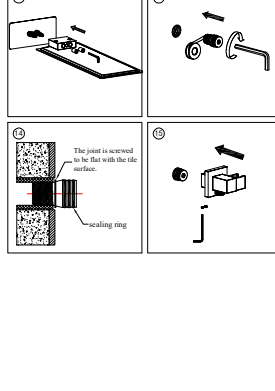
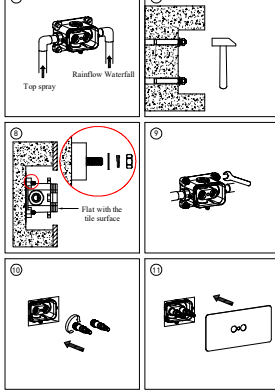
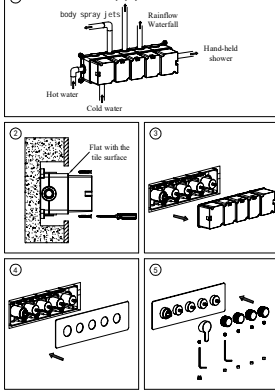
4. Installation size

Before installation, refer to the product installation dimension drawing to determine the installation position, and embed cold and hot water pipes in the wall (the thread and center distance must conform to the product size).
Wash the pipeline and the position where the faucet is installed with a washing tool to remove sediment, copper scraps, etc.



5. Installation items and methods

1. The faucet hot lines have been tested and debugged before leaving the factory. Please do not disassemble by yourself!
2. Before installing the faucet, please be sure to confirm whether the water inlet pipe and angle valve are correctly installed. The impurities and sludge in the embedded water pipe have been removed to avoid blocking the faucet and affecting the water outlet function.
3. After installation, please check whether the joints are tightly connected and whether the pipeline leaks.
4. The working water pressure of the faucet is 0.05MPa or less, and the water inlet pressure is <0.35MPa or less.
5. When installing and using the faucet, please use normal torque to prevent the handle and base from breaking.
6. When using, please turn on cold water first, and then turn on hot water to adjust the temperature, so as not to burn.
7. Users must cover and protect the decorating products such as faucets when they are not in use. If there is a current, long sharp and sharp dropping on the surface, it must be cleaned within 30 minutes.



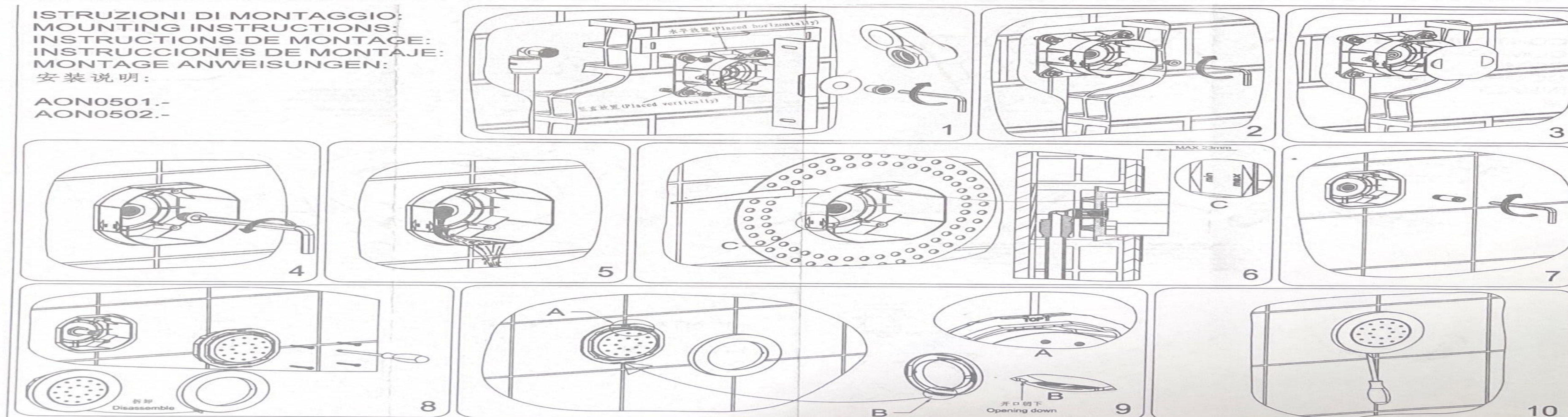
6. Repair and maintenance

1. To keep the water fairly clean, clean the pump frequently or regularly.
2. Rinse with water only, and dry the pump with soft cotton cloth.
3. Do not over-charge components around particles such as cleaning powder or debris, pebbles, or stones, bricks, energy cells or sandpaper, avoiding rinsing sandpaper.
4. Do not use any acidic cleaning agent or rough cleaning agent or soap to wash.
5. When the water flow of the cleaner is obviously reduced, clean the filter screen of the shower head and the rubber particle ball of the shower head, and use the water flow of the shower head to clean the filter screen of the shower head. The water flow of the shower head is obviously reduced or the rubber particle ball is obviously reduced, clean the shower head with a brush and use soapy water to clean the ball in the rubber particle ball at the shower head.
6. If a lot of cleaning work is needed, please follow the following procedures:
 - A. Use clean water and cloth to remove dirt and scale film on the surface of the pump.
 - B. Use any of the following cleaning agents to remove dirt and scale film on the surface of the pump:
 - 1. Household cleaning agent: Use household cleaning agent to clean the pump.
 - 2. Cleaning agent: Use cleaning agent to clean the pump.
 - 3. Cleaning agent: Use cleaning agent to clean the pump.
 - 4. Cleaning agent: Use cleaning agent to clean the pump.
 - 5. Cleaning agent: Use cleaning agent to clean the pump.
 - 6. Cleaning agent: Use cleaning agent to clean the pump.
 - 7. Cleaning agent: Use cleaning agent to clean the pump.
 - 8. Cleaning agent: Use cleaning agent to clean the pump.
 - 9. Cleaning agent: Use cleaning agent to clean the pump.
 - 10. Cleaning agent: Use cleaning agent to clean the pump.
 - 11. Cleaning agent: Use cleaning agent to clean the pump.
 - 12. Cleaning agent: Use cleaning agent to clean the pump.
 - 13. Cleaning agent: Use cleaning agent to clean the pump.
 - 14. Cleaning agent: Use cleaning agent to clean the pump.
 - 15. Cleaning agent: Use cleaning agent to clean the pump.
 - 16. Cleaning agent: Use cleaning agent to clean the pump.
 - 17. Cleaning agent: Use cleaning agent to clean the pump.
 - 18. Cleaning agent: Use cleaning agent to clean the pump.
 - 19. Cleaning agent: Use cleaning agent to clean the pump.
 - 20. Cleaning agent: Use cleaning agent to clean the pump.
 - 21. Cleaning agent: Use cleaning agent to clean the pump.
 - 22. Cleaning agent: Use cleaning agent to clean the pump.
 - 23. Cleaning agent: Use cleaning agent to clean the pump.
 - 24. Cleaning agent: Use cleaning agent to clean the pump.
 - 25. Cleaning agent: Use cleaning agent to clean the pump.
 - 26. Cleaning agent: Use cleaning agent to clean the pump.
 - 27. Cleaning agent: Use cleaning agent to clean the pump.
 - 28. Cleaning agent: Use cleaning agent to clean the pump.
 - 29. Cleaning agent: Use cleaning agent to clean the pump.
 - 30. Cleaning agent: Use cleaning agent to clean the pump.
 - 31. Cleaning agent: Use cleaning agent to clean the pump.
 - 32. Cleaning agent: Use cleaning agent to clean the pump.
 - 33. Cleaning agent: Use cleaning agent to clean the pump.
 - 34. Cleaning agent: Use cleaning agent to clean the pump.
 - 35. Cleaning agent: Use cleaning agent to clean the pump.
 - 36. Cleaning agent: Use cleaning agent to clean the pump.
 - 37. Cleaning agent: Use cleaning agent to clean the pump.
 - 38. Cleaning agent: Use cleaning agent to clean the pump.
 - 39. Cleaning agent: Use cleaning agent to clean the pump.
 - 40. Cleaning agent: Use cleaning agent to clean the pump.
 - 41. Cleaning agent: Use cleaning agent to clean the pump.
 - 42. Cleaning agent: Use cleaning agent to clean the pump.
 - 43. Cleaning agent: Use cleaning agent to clean the pump.
 - 44. Cleaning agent: Use cleaning agent to clean the pump.
 - 45. Cleaning agent: Use cleaning agent to clean the pump.
 - 46. Cleaning agent: Use cleaning agent to clean the pump.
 - 47. Cleaning agent: Use cleaning agent to clean the pump.
 - 48. Cleaning agent: Use cleaning agent to clean the pump.
 - 49. Cleaning agent: Use cleaning agent to clean the pump.
 - 50. Cleaning agent: Use cleaning agent to clean the pump.
 - 51. Cleaning agent: Use cleaning agent to clean the pump.
 - 52. Cleaning agent: Use cleaning agent to clean the pump.
 - 53. Cleaning agent: Use cleaning agent to clean the pump.
 - 54. Cleaning agent: Use cleaning agent to clean the pump.
 - 55. Cleaning agent: Use cleaning agent to clean the pump.
 - 56. Cleaning agent: Use cleaning agent to clean the pump.
 - 57. Cleaning agent: Use cleaning agent to clean the pump.
 - 58. Cleaning agent: Use cleaning agent to clean the pump.
 - 59. Cleaning agent: Use cleaning agent to clean the pump.
 - 60. Cleaning agent: Use cleaning agent to clean the pump.
 - 61. Cleaning agent: Use cleaning agent to clean the pump.
 - 62. Cleaning agent: Use cleaning agent to clean the pump.
 - 63. Cleaning agent: Use cleaning agent to clean the pump.
 - 64. Cleaning agent: Use cleaning agent to clean the pump.
 - 65. Cleaning agent: Use cleaning agent to clean the pump.
 - 66. Cleaning agent: Use cleaning agent to clean the pump.
 - 67. Cleaning agent: Use cleaning agent to clean the pump.
 - 68. Cleaning agent: Use cleaning agent to clean the pump.
 - 69. Cleaning agent: Use cleaning agent to clean the pump.
 - 70. Cleaning agent: Use cleaning agent to clean the pump.
 - 71. Cleaning agent: Use cleaning agent to clean the pump.
 - 72. Cleaning agent: Use cleaning agent to clean the pump.
 - 73. Cleaning agent: Use cleaning agent to clean the pump.
 - 74. Cleaning agent: Use cleaning agent to clean the pump.
 - 75. Cleaning agent: Use cleaning agent to clean the pump.
 - 76. Cleaning agent: Use cleaning agent to clean the pump.
 - 77. Cleaning agent: Use cleaning agent to clean the pump.
 - 78. Cleaning agent: Use cleaning agent to clean the pump.
 - 79. Cleaning agent: Use cleaning agent to clean the pump.
 - 80. Cleaning agent: Use cleaning agent to clean the pump.
 - 81. Cleaning agent: Use cleaning agent to clean the pump.
 - 82. Cleaning agent: Use cleaning agent to clean the pump.
 - 83. Cleaning agent: Use cleaning agent to clean the pump.
 - 84. Cleaning agent: Use cleaning agent to clean the pump.
 - 85. Cleaning agent: Use cleaning agent to clean the pump.
 - 86. Cleaning agent: Use cleaning agent to clean the pump.
 - 87. Cleaning agent: Use cleaning agent to clean the pump.
 - 88. Cleaning agent: Use cleaning agent to clean the pump.
 - 89. Cleaning agent: Use cleaning agent to clean the pump.
 - 90. Cleaning agent: Use cleaning agent to clean the pump.
 - 91. Cleaning agent: Use cleaning agent to clean the pump.
 - 92. Cleaning agent: Use cleaning agent to clean the pump.
 - 93. Cleaning agent: Use cleaning agent to clean the pump.
 - 94. Cleaning agent: Use cleaning agent to clean the pump.
 - 95. Cleaning agent: Use cleaning agent to clean the pump.
 - 96. Cleaning agent: Use cleaning agent to clean the pump.
 - 97. Cleaning agent: Use cleaning agent to clean the pump.
 - 98. Cleaning agent: Use cleaning agent to clean the pump.
 - 99. Cleaning agent: Use cleaning agent to clean the pump.
 - 100. Cleaning agent: Use cleaning agent to clean the pump.
 - C. Use clean water and cloth to remove dirt and scale film on the surface of the pump.
 - D. Use clean water and cloth to remove dirt and scale film on the surface of the pump.

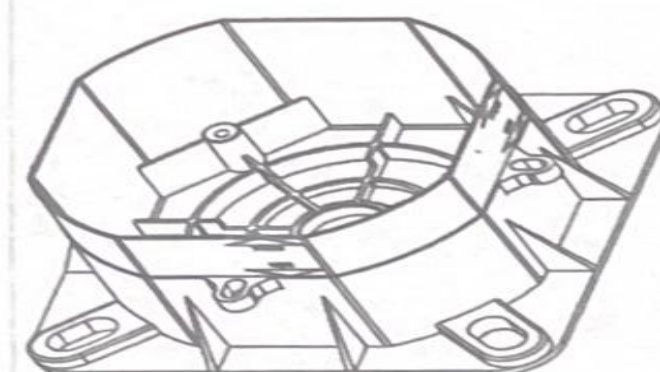
- A. Use clean water and soft cloth to remove dirt and scale film on the surface as far as possible;
- B. Use any of the following cleaning agents to remove surface dirt and scale films:
 - Mild liquid cleaner:
Colorless glass cleaner, powder cleaner that has no grinding effect and can be completely dissolved (and mixed according to the manufacturing instructions).
 - Preliminary liquid without abrasion:
Stubborn dirt can be soaked in hot vinegar, then wiped with wax or scrubbed with toothpaste or with special hardware cleaner;
- C. After cleaning, please remove all cleaning agents with clean water and wipe them dry with soft cotton cloth.

ISTRUZIONI DI MONTAGGIO:
MOUNTING INSTRUCTIONS:
INSTRUCCIONES DE MONTAJE:
MONTAGE ANWEISUNGEN:
安装说明:

AON0501.-
AON0502.-



CONTENUTO SCATOLA:
COMPONENTS:
COMPOSANTS:
COMPONENTES:
INHALT:
组件:



N° 1 SCATOLA PER INCASSO
BUILT IN BOX
BOITE D'ENCAUSSEMENT
CONSTRUIDO EN CAJA
EINBAU SCHACHTEL
嵌座盒



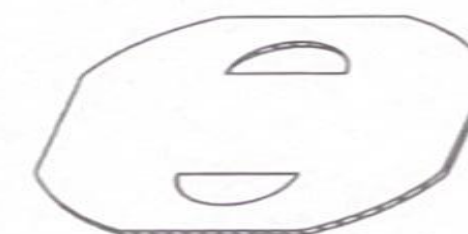
N° 1 RONDELLA
FLAT WASHER
RONDELLE
DISCO
SCHEIBE
垫片



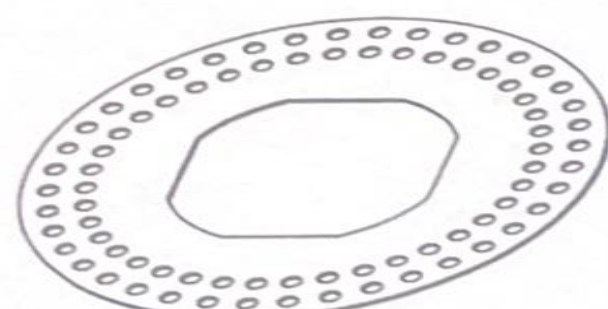
N° 1 RACCORDO 1/2"GM 1/4"GF
CONNECTION 1/2"GM 1/4"GF
RACCORD 1/2"GM 1/4"GF
CONEXION 1/2"GM 1/4"GF
VERBINDUNG 1/2"GM 1/4"GF
接头 1/2"GM 1/4"GF



N° 1 TAPPO 1/4"GM CON O-RING
CAP 1/4"GM WITH O-RING
CAPSULE 1/4"GM AVEC O-RING
TAPON 1/4"GM
SCHRAUBVERSCHLUSS 1/4"GM MIT O-RING
堵头 1/4"GM 配有 O-RING



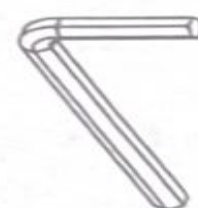
N° 1 COPERCHIO
COVER
COUVERCLE
TAPA
DECKEL
安装盖板



N° 1 Pastiglie di montaggio
MOUNTING PADS
MONTAGE PADS
Asieriles de montaje
Montagescheiben
安装垫



N° 1 RACCORDO 1/4"GM CON O-RING
CONNECTION 1/4"GM WITH O-RING
RACCORD 1/4"GM AVEC O-RING
CONEXION 1/4"GM O-RING
VERBINDUNG 1/4"GM MIT O-RING
连接杆 1/4"GM 配有 O-RING



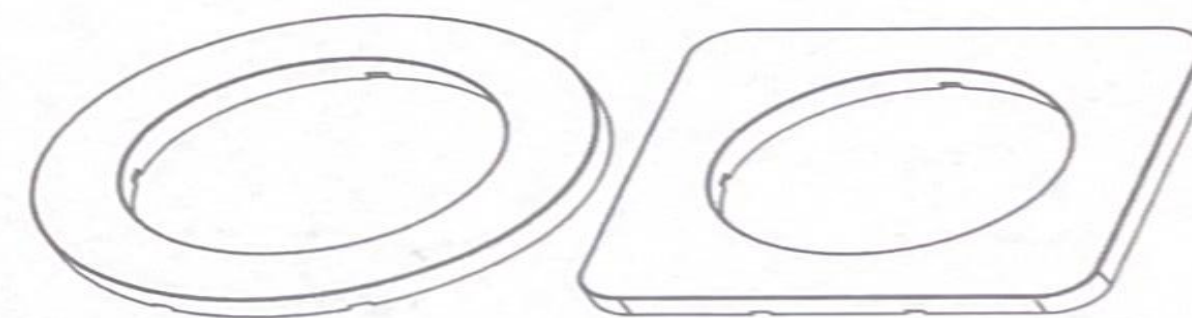
N° 1 CHIAVE ESAGONALE(8mm)
HEX WRENCH(8mm)
Clé hexagonale(8mm)
LLAVE HEXAGONAL(8mm)
Inbusschlüssel(8mm)
扳手(8mm)



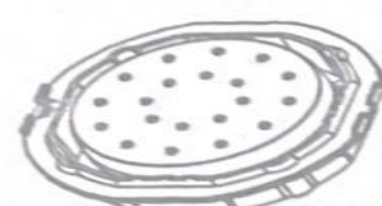
N° 8 VITI d4.2 x L38
SCREWS d4.2 x L38
VIS d4.2 x L38
TORNILLOS d4.2 x L38
SCHRAUBEN d4.2 x L38
8 次螺钉 d4.2 x L38



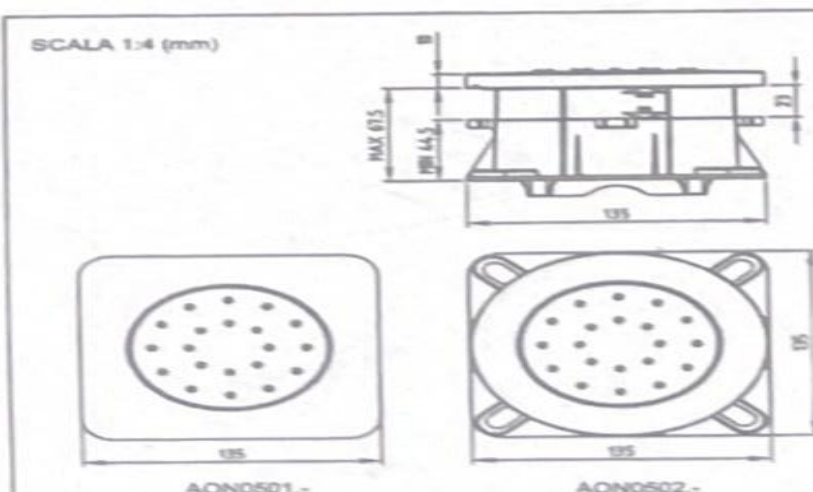
N° 4 BULLONI DI ESPANSIONE M6x60
EXPANSION BOLTS M6x60
EXPANSION BOULONNIER M6x60
pernos de expansión M6x60
DEHNSCHRAUBEN M6x60
膨胀螺栓 M6x60



N° 1 ROSONE (Rotonda o quadrata)
ROSE (Round or square)
COUVERTURE (Ronde ou carrée)
EMBELLECEDOR (Redondo o cuadrado)
ROSETTE (Rund oder eckig)
装饰盖(圆形或方形)



N° 1 EROGATORE
BODY JET
BODY JET
INYECCION PRINCIPAL
SELTENBRAUSE
喷射主体



MONTAGGIO FINALE:
MOUNTING:
MONTAJE FINAL:
FINALMONTAGE:
装配体:

