

Eoslift

H10/15/20

**Manual
Pallet
Stacker**

Operating Instructions

Eoslift

Eoslift Automation Technology Corp.
No.99 Yanjia Road, Yuantong Town, Haiyan, Zhejiang Province, China 314317
Tel: +86 573 8622 9999
Fax: +86 573 8622 2900
info@eoslift.com
www.eoslift.com
Hotline: 400-626-9090



Esteemed users:

For proper and safe operation of the products, before using the products, be sure to read the operating instructions carefully and retain them properly for future reference.

The operator needs to have proficient operation skills. The operator has responsibility to carefully understand the performance and safety rules of the pallet stacker. If you have any doubts during the application, please don't hesitate to contact Eoslift.

Eoslift

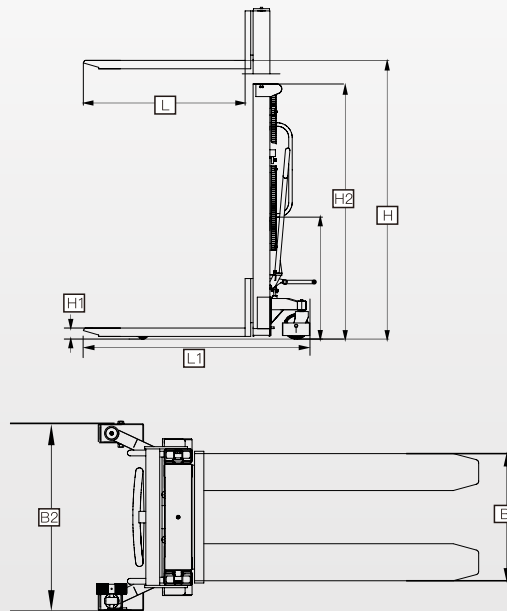


Table of contents

I . Technical parameters	01
II . Safe operating rules	02
III . Maintenance	03
IV . Adjusting the finger grip handle	05
V . Transport, loading, test run and storage	06
VI . Troubleshooting	07
VII . Parts list	09

Technical parameters

Model		H10	H15	H20
Rated capacity	kg	1000	1500	2000
Load center	mm	600		
Dead-weight	kg	270–320		
Minimum fork height	H1 mm	85		
Maximum fork height	H mm	1600/2500/3000	1600	1600
Lowered Mast Height	L mm	2030/1780/2030	2030	2030
Fork length	B mm	1150		
Overall fork width	L1 mm	540/330-740		
Length of the stacker	H2 mm	1670		
Width of the stacker	B2 mm	764/834		
Load-bearing wheel	mm	Φ70×70		
Steering wheel	kg	Φ180×50		
Minimum turning radius		1295		



Safe operating rules

1. Requirements for operator

The stacker must be operated by persons trained in operation. The operator shall be able to carry out operation demonstration of moving and controlling goods for users, and he or she is responsible for the stacker. Unauthorized persons are not allowed to operate the stacker. Do not carry or lift passengers.

2. The stacker is only applicable to indoor use and the application environment must meet the following conditions:

- ▶ Free from rainwater or corrosion of harmful gases;
- ▶ Room temperature of -20°C~+40°C;
- ▶ Relative ambient humidity <90%;
- ▶ Requirements for ground: hard, anti-skid and level without barriers.

3. Faults and defects

If stacker failure or defects occur, immediately notify the management personnel. If the stacker is not safe for operation (such as wheel worn or brake failed, etc.), please stop using it before it is fully repaired.

4. Hazardous area

The hazardous area usually refers to the area where the stacker or its lifting device (e.g. forks, attachments) will pose threat to persons during their operation or lifting process. Typically, this range extends to the area where goods or stacker accessories are lowered.

Warning

Unauthorized persons must leave the hazardous area. Whenever a situation causes possible harm to persons, the operator must give a warning. If the unauthorized persons still stays in the hazardous area after the warning is given, the operator must immediately stop the operation of the stacker.

5. Safety device and warning signs

- ▶ Safety device, warning signs and the above safety precautions must be given enough attention to.
- ▶ When handling the goods, the fork height must not exceed 300mm.

6. Operation protection

Hands and feet shall be kept far away from moving parts, such as frame, chains, forks and wheels to prevent pinching hands.

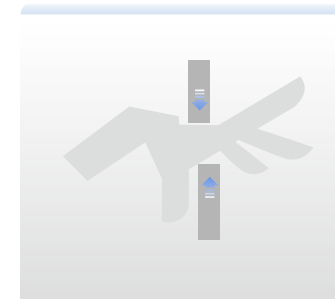


Figure1

7. Stable operation

Travel of stacker shall be stable, avoiding sharp turns and sudden start.

8. Loose or unstable stacking of goods or overloaded cargoes are prohibited.

Loose or unstable stacking of goods will cause falling of goods, or even turnover.

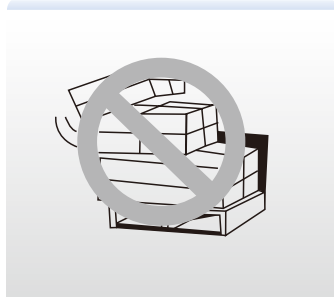


Figure 2

9. Other safety requirements

- ▶ Do not use this stacker on the muddy ground.
- ▶ Do not operate the stacker unless you have carefully checked its condition. Pay special attention to the wheels, the handle assemblies, the frame, the chains, etc.
- ▶ The operator shall wear safety shoes and gloves for protection.
- ▶ Do not use the stacker in a potentially flammable and explosive atmosphere.
- ▶ Do not use the stacker during strong wind forces.
- ▶ Do not use the stacker on places insufficiently illuminated.
- ▶ Do not use the stacker on a slopping ground.
- ▶ The weight of goods should be distributed evenly on the two forks, do not use only one fork. The center of gravity of goods beyond the two forks is forbidden.
- ▶ Stackers should be parked on a smooth place, braked, with the forks lowered to the min. height.
- ▶ Do not use the stacker with guarding removed.
- ▶ Under special conditions or in special locations, the operator should be careful while operating the stacker.

No modifications or alterations to the parts of the stacker, especially the safety device shall be made without permission. All original spare parts have been checked by the quality inspection departments. To ensure the safety and reliability of the stacker operation, only the manufacturer's spare parts can be used. Replaced parts, such as batteries and waste oil must be disposed in accordance with the appropriate environmental protection rules.

Warning

Only customer service persons specially trained by our company can carry out maintenance of the stacker. Thoroughly standardized maintenance is the most important preconditions to ensure stable and reliable operation performance of the stacker. Neglect of regular maintenance could result in failure and malfunction of the stacker and poses a potential threat to the safety of the staff and operation.

1. Hydraulic oil

Please check the oil level every six months and change the oil every twelve months. 32 # hydraulic oil is recommended, with total volume of about 2.0 liters.

2. Routine maintenance

It is necessary to check and maintain the stacker daily for sound application. Special attention should be paid to:

- (1)The wheels, the axles, as thread, rags, etc. may block the wheels and axles;
- (2)The fork and the frame which may be deformed. The forks should be unloaded and lowered in the lowest position.

3. Lubrication

Use motor oil or grease to lubricate all movable parts.

4. Remove the air

The air may enter the hydraulic pump during the transportation. It will cause the forks fails to be lifted when switched to the lifting position. The air can be removed in the following way: pull the finger grip control handle (3-1) to the lowering position and move handle up and down for several times.

Adjusting finger grip control handle

On the handle of this stacker, you can find finger grip control handle (3-1) which can be regulated in three positions :

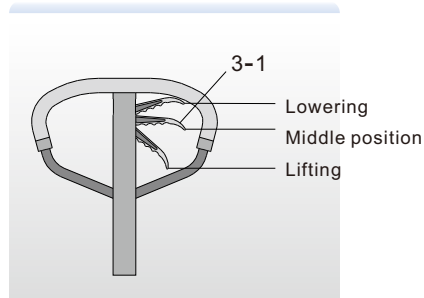


Figure 3

- 1 Lift - lifting
- 2 Middle position - travel
- 3 Lower - lowering

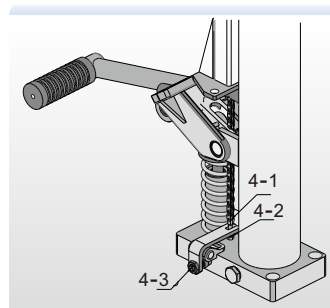


Figure 4

However if they have been changed, you can adjust them according to the following steps:

① If the forks elevate while pumping in the Middle position, turn the adjusting nut (4-2) on the adjusting bolt (4-1) or screw (4-3) clockwise until pumping action does not raise or lower the forks and the finger grip control handle (3-1) works properly Middle position.

② If the forks descend while pumping in the Middle position, turn the adjusting nut (4-2) on the adjusting bolt (4-1) or screw (4-3) counterclockwise until pumping action does not raise or lower the forks and the finger grip control handle (3-1) works properly Middle position .

③ If the forks do not descend when the finger grip control handle (3-1) is in the Lowering position, turn adjusting nut (4-2) on the adjusting bolt (4-1) or screw (4-3) clockwise until raising the control handle lowers the forks. Then check the Middle position according to items ① and ② to make sure the nut (4-2) and screw (4-3) are in the proper position.

④ If the forks do not elevate when the finger grip control handle (3-1) is in the Lifting position, turn adjusting nut (4-2) on the adjusting bolt (4-1) or screw (4-3) counterclockwise until turning the control handle to that position lifts the forks. Then check the function of the Lowering position and Middle position according to items ①, ② and ③ is normal.

Transport, loading, test run and storage

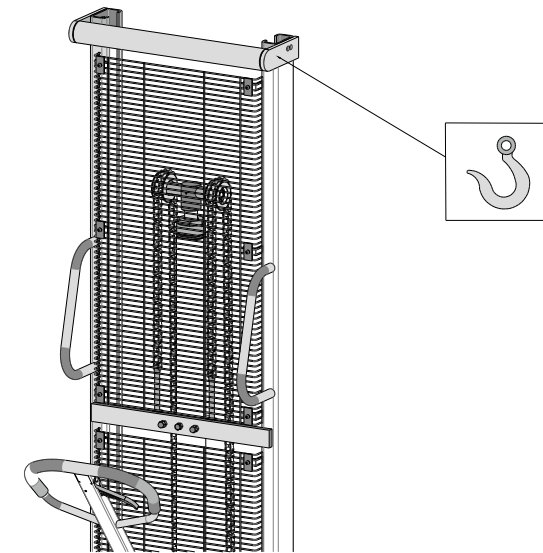


Figure 5

As shown in Figure 5, lifting points are on both sides of the stacker.

- ▶ Before loading, the operator shall check the stacker weight to choose the suitable hoisting equipment. When the stacker is unloaded, the operator shall look out for safety around to ensure safe landing of the stacker.
- ▶ The truck shall be commissioned according to the following function tests: steering, traveling, braking and combined functions with rated capacity.
- ▶ When a stacker is inoperative, the loads (if applicable) shall be removed with proper tools, the stacker shall be transported out of the working zone with a proper way.
- ▶ Shut down and in storage for a long time, the storage environment shall be kept dry and clean, with forks lowered to their lowest position.

This chapter enables the user to identify and rectifies basic faults and the effects of incorrect operation. When trying to locate a fault, proceed in the order shown in the table below. If, after carrying out the following remedial action listed in "actions", the stacker cannot be restored to operation, contact the manufacturer's after-sale service department. Additional troubleshooting must only be performed by the manufacturer's specialist service engineers. The manufacturer's customer service department is specially trained to carry out these operations.

No.	Fault	Possible cause	Action
1	The forks cannot be lifted to max. height	The hydraulic oil is insufficient	Add the hydraulic oil
2	The forks cannot be lifted	<ul style="list-style-type: none"> ▶ The hydraulic oil is insufficient ▶ The hydraulic oil has impurities ▶ Adjusting nut(4-2) or adjusting screw(4-3) in wrong positions ▶ Air enters into the cylinder ▶ Seals damaged 	<ul style="list-style-type: none"> ▶ Add the hydraulic oil ▶ Change hydraulic oil ▶ Adjust nut(4-2) or adjusting screw(4-3) ▶ Put the finger grip handle in the upper position and press the handle dozens of times ▶ Replace the damaged seals with new seals
3	The forks cannot be lowered	<ul style="list-style-type: none"> ▶ The piston rod or the frame is deformed resulting from overloading or cargo slanting to one side ▶ The forks was kept in raised position for extended period of time, then the piston rod is exposed to the air and gets rusted , which blocks the motion of the piston ▶ Adjusting nut(4-2) or adjusting screw(4-3) in wrong positions ▶ Rollers rusted and blocked 	<ul style="list-style-type: none"> ▶ Replace the related parts of the cylinder or the frame with new ones ▶ Keep the forks at the lowest position while not in use, and keep piston rods lubricated in time ▶ Adjust nut(4-2) or adjusting screw(4-3) ▶ Lubricate rollers
4	Oil leakage	<ul style="list-style-type: none"> ▶ Seals damaged ▶ Parts damaged 	<ul style="list-style-type: none"> ▶ Replace the damaged seals with new seals ▶ Replace the damaged parts with new parts

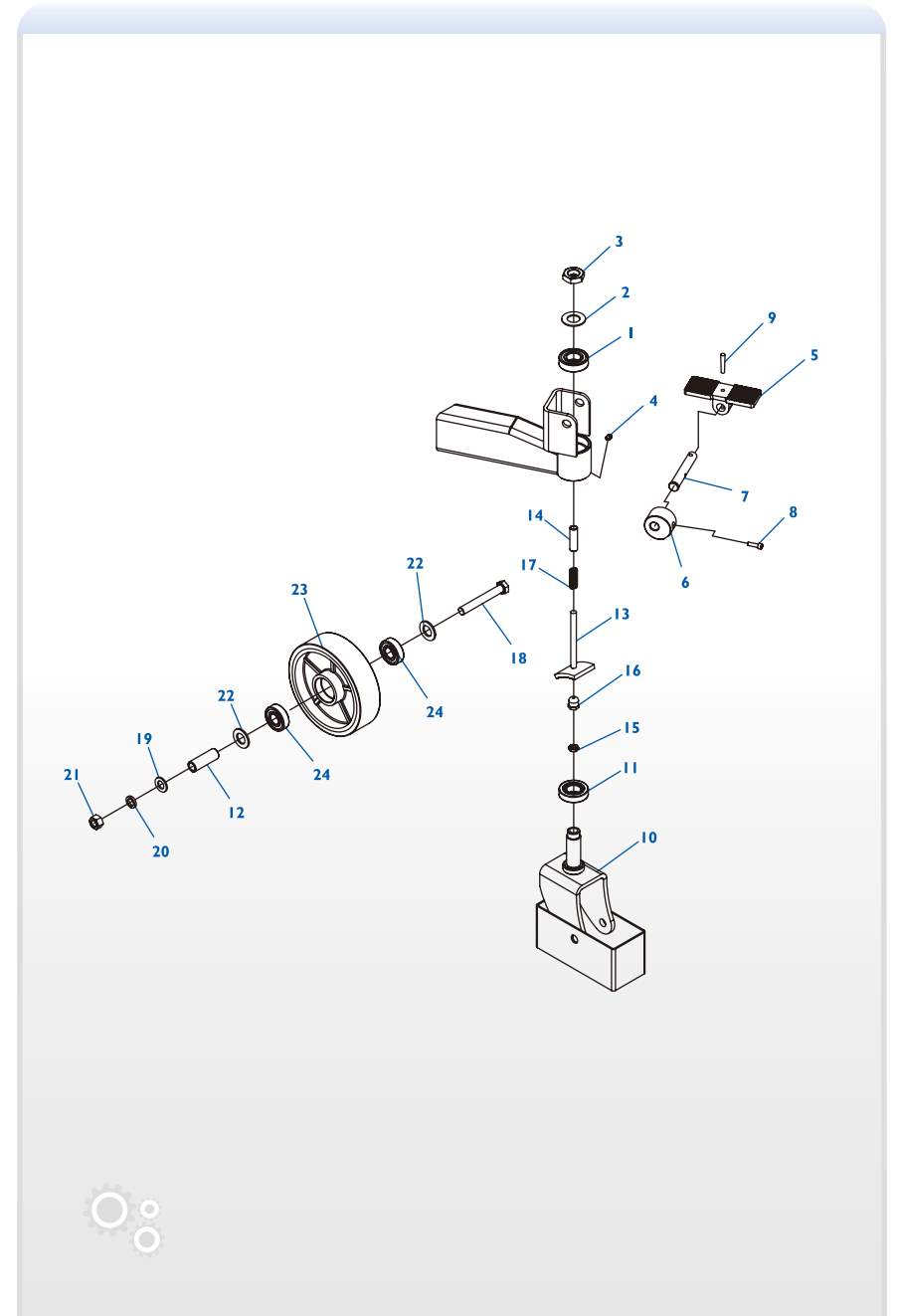
5	The forks descended without operation	<ul style="list-style-type: none"> ▶ Impurities in the oil cause the valve to be unable to close tightly ▶ Seals damaged ▶ Adjusting nut(4-2) or adjusting screw(4-3) in wrong positions 	<ul style="list-style-type: none"> ▶ Change hydraulic oil ▶ Replace the damaged seals with new seals ▶ Adjust nut(4-2) or adjusting screw(4-3)
---	---------------------------------------	---	---



Note: Do not attempt to repair the stacker unless you are trained in the professions.

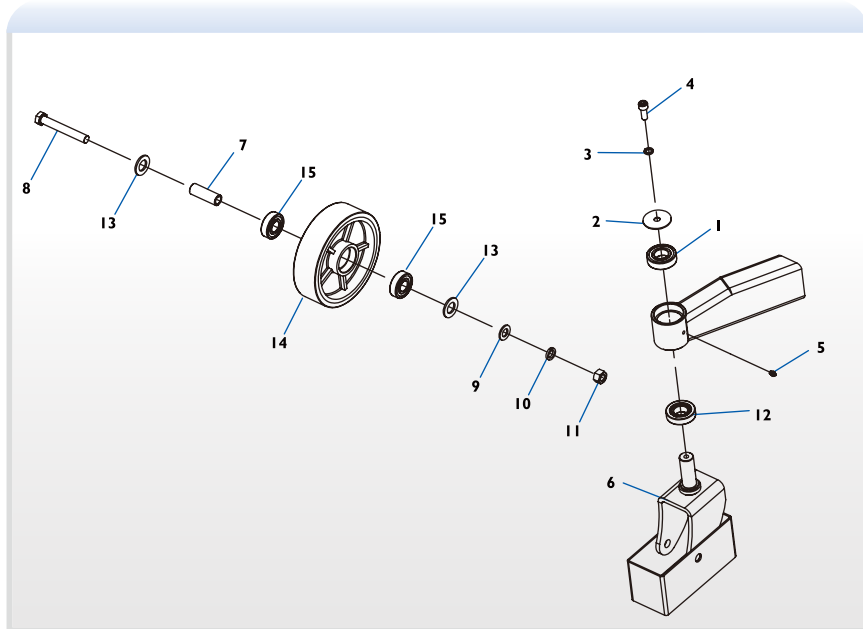
Parts list- Guide wheel,with brake

NO.	Parts number	Description	Qty.
1	WC02000224	GB276,Deep groove ball bearing 6205, two-side shielded	1
2	WC02000343	Washer	1
3	WE04000019	GB6173,Hexagon thin nut M22×1.5, galvanized	1
4	WC02000019	JB7940.4, Push-fit type grease nipple 6	1
5	WC02000345	Pedal, galvanized	1
6	WC02000346	Clamping roller, galvanized	1
7	WC02000347	Shaft, galvanized	1
8	WE03000021	GB70.1, Hexagon socket head cap screw M6 × 20, galvanized	1
9	WE06000012	GB117, Taper pin 6 × 42, galvanized	1
10	WC02000350	Ribbon brake guide wheel bracket,black	1
11	WC02000225	GB297,Tapered Roller Bearings 30205	1
12	WC02000348	Big wheel shaft sleeve	1
13	WC02000351	Brake rod, black	1
14	WC02000342	Sleeve	1
15	WE04000020	GB6172.1,Hexagon thin nut M10,galvanized	1
16	WC02000344	Connecting sleeve, galvanized	1
17	WC02000349	Reset spring	1
18	WE01000004	GB5780,Hexagon head bolt M14×100, galvanized	1
19	WE05000012	GB95,Plain washer 14,galvanized	1
20	WE05000013	GB93,Normal type spring lock washer 14, galvanized	1
21	WE04000012	GB6170, Hexagon nut M14, galvanized	1
22	WE05000014	GB95,Plain washer 20,galvanized	2
23	WC02000226	Iron-core PU wheel φ180×50, bright red PU, black iron core	1
	WC02000285	Nylon wheelφ180×50(flower-shape wheel)	
	WC02000435	Nylon wheelφ180×50(plane wheel)	
24	WC02000022	GB276,Deep groove ball bearing 6204, two-side shielded	2



Parts list- Guide wheel

NO.	Parts number	Description	Qty.
1	WC02000224	GB276,Deep groove ball bearing 6205, two-side shielded	1
2	WC02000352	Wheel shaft cover, galvanized	1
3	WE05000002	GB93,Normal type spring lock washer 10, galvanized	1
4	WE03000004	GB70,1,Hexagon socket head cap screw M10x25,galvanized	1
5	WC02000019	JB7940.4, Push-fit type grease nipple 6	1
6	WC02000353	Rear wheel carrier, black	1
7	WC02000348	Big wheel shaft sleeve	1
8	WE01000004	GB5780,Hexagon head bolt M14x100, galvanized	1
9	WE05000012	GB95,Plain washer 14,galvanized	1
10	WE05000013	GB93,Normal type spring lock washer 14, galvanized	1
11	WE04000012	GB6170, Hexagon nut M14, galvanized	1
12	WC02000225	GB297,Tapered Roller Bearings 30205	1
13	WE05000014	GB95,Plain washer 20,galvanized	2
14	WC02000226	Iron-core PU wheel φ180x50, bright red PU, black iron core	1
	WC02000285	Nylon wheelφ180x50(flower-shape wheel)	
	WC02000435	Nylon wheelφ180x50(plane wheel)	
15	WC02000022	GB276,Deep groove ball bearing 6204, two-side shielded	2

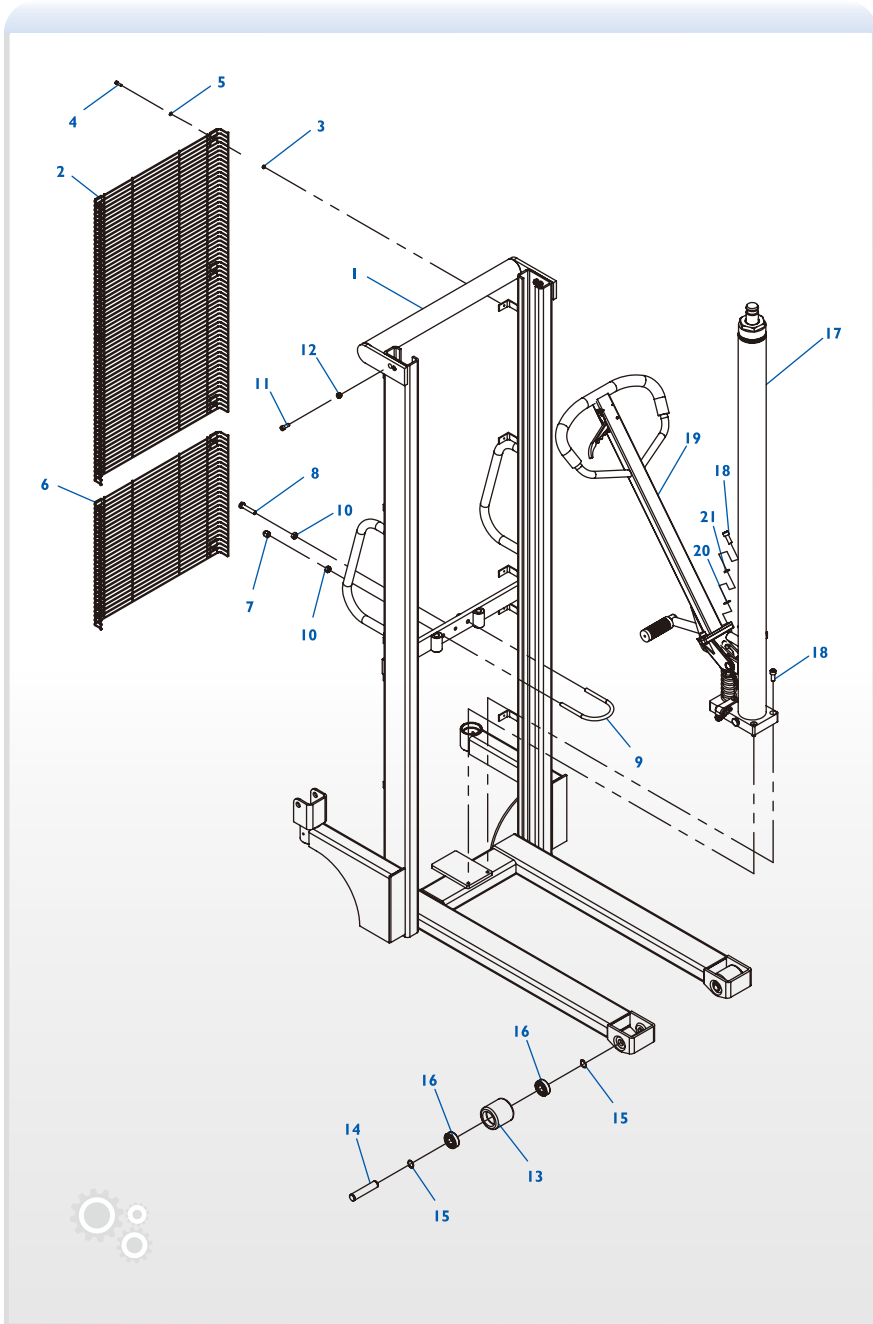


Parts list- Single frame

H10/15/20 Series Manual Pallet Stackers

NO.	Parts number	Description	Qty.
1	WC02000337	External frame (1.0t, fixed), 5012	1
	WC02000402	External frame (1.0t, movable), 5012	
	WC02000421	External frame (1.5t, fixed), 5012	
	WC02000424	External frame (1.5t, movable), 5012	
	WC02000433	External frame (2.0t, movable), 5012	
2	WC02000357	Guarding screen, black	1
3	WE04000005	GB6170,Hexagon nut M5,galvanized	10
4	WE03000016	GB70.1,Hexagon socket head cap screw M5x16,galvanized	10
5	WE05000004	GB95,Plain washer 5,galvanized	10
6	WC02000330	Guarding screen, black	1
7	WE04000013	GB802,Acorn nut--sssembling typeM10, galvanized	2
8	WE01000002	Gb5781, Hexagon head bolts--Full thread M10 x 50, galvanized	1
9	WC02000355	Locking ring, galvanized	1
10	WE04000009	GB6170,Hexagon nut M10,galvanized	3
11	WE03000014	GB70.1,Hexagon socket head cap screw M8x20,galvanized	4
12	WE04000015	GB889.1, Hexagon locking nut M8, galvanized	4
13	WC02000227	Iron-core PU wheel φ70x70, bright red PU	2
	WC02000286	Nylon wheel φ70x70	
14	WC02000259	Front wheel shaft	2
15	WE07000004	GB894.1,Circlip for shaft 20,blackening	4
16	WC02000022	GB276,Deep groove ball bearing 6204, two-side shielded	4
17	WC01000020	Cylinder assembly(1.0t/1.5t,1.6), black	1
	WC01000025	Cylinder assembly(2.0t,1.6), black	
18	WE03000004	GB70.1,Hexagon socket head cap screw M10x25,galvanized	5
19	WC02000338	EOS-HS handle	1
20	WE05000009	GB95,Plain washer 10,galvanized	3
21	WE05000002	GB93,Normal type spring lock washer 10, galvanized	3

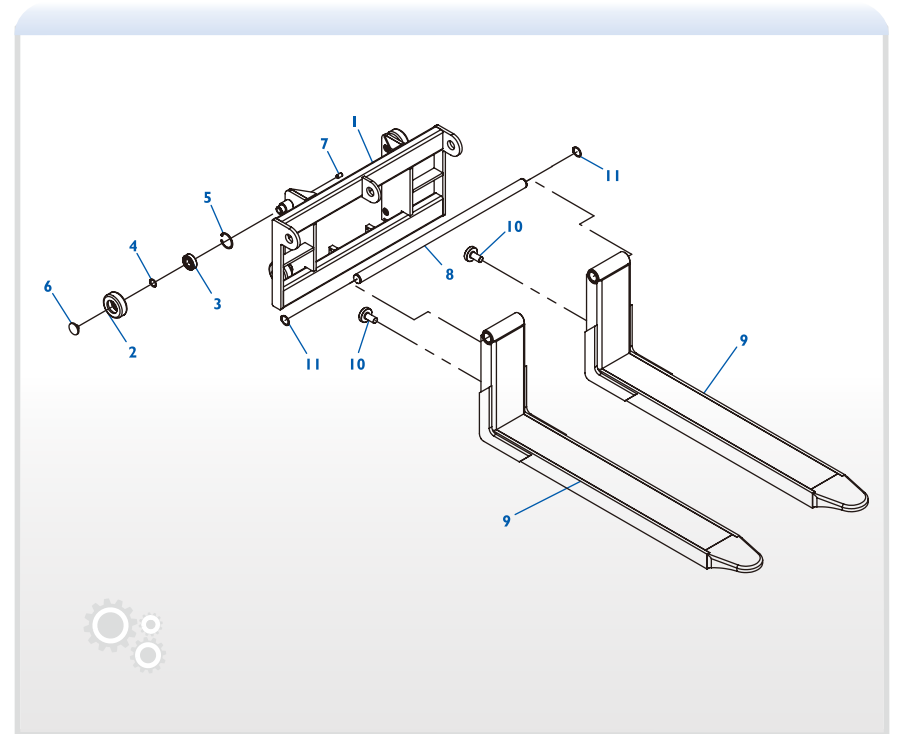
Parts list- Single frame



Parts list- Movable fork assy

H10/15/20 Series Manual Pallet Stackers

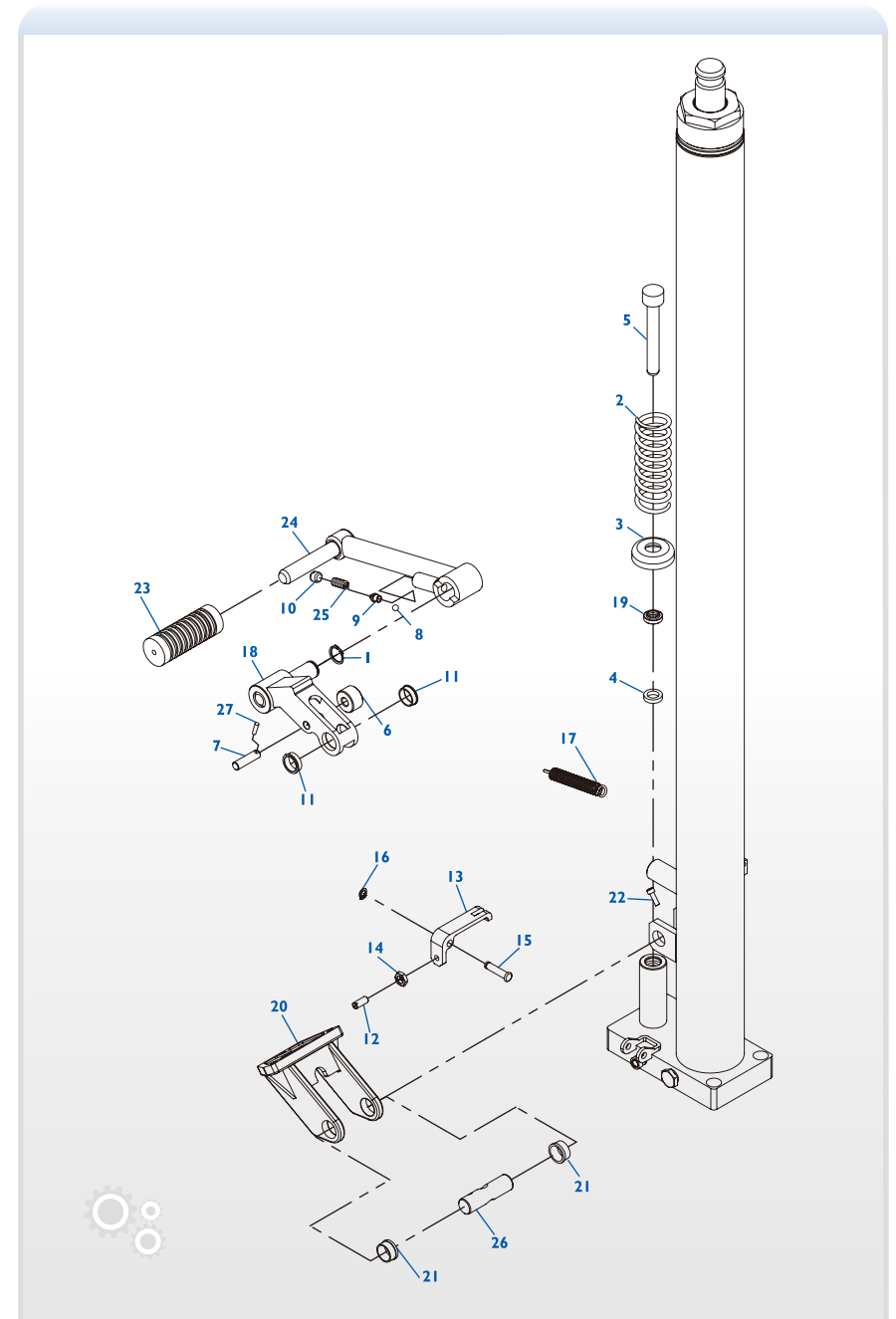
NO.	Parts number	Description	Qty.
1	WC02000403	Fork guide plate bracket(1.0t), black	1
	WC02000425	Fork guide plate bracket(1.5t), black	
	WC02000434	Fork guide plate bracket(2.0t), black	
2	WC02000341	Iron wheel (1.0t/1.5t)	4
	WC02000231	Iron wheel (2.0t)	
3	WC02000224	GB276,Deep groove ball bearing 6205, two-side shielded	4
4	WE07000010	GB894.1,Circlip for shaft 25,blackening	4
5	WE07000007	GB893.1,Circlip for hole 52,blackening	4
6	WC02000232	Iron wheel cap	4
7	WE03000019	Gb77, Hexagon socket set screw with flat point M12x20,galvanized	8
8	WC02000404	Shaft (740) galvanized	1
9	WC02000282	Fork assembly (1150), black	2
10	WC02000284	Adjusting screw,galvanized	2
11	WE07000011	GB894.1,Circlip for shaft 32,blackening	2



NOTE:For single mast models

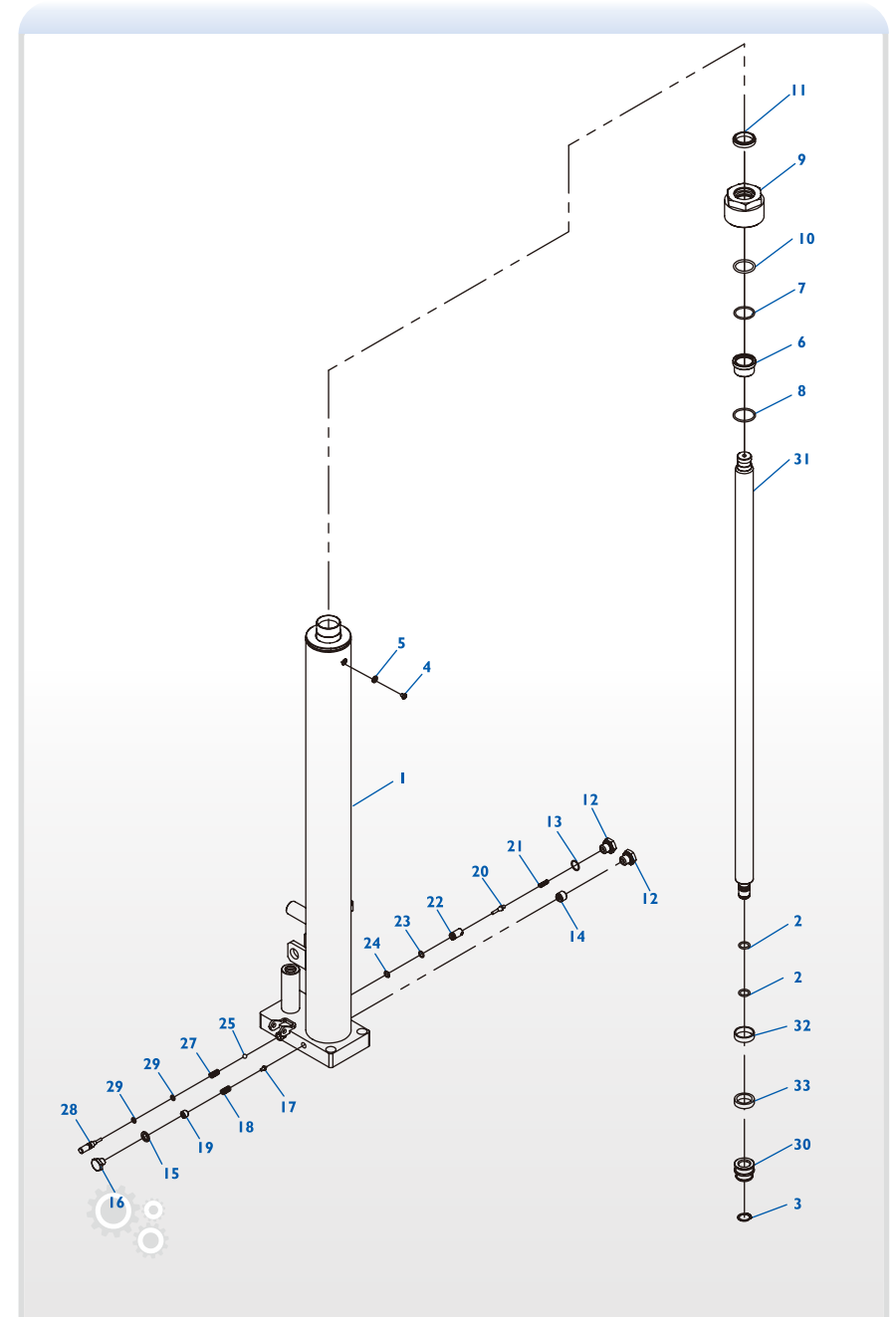
Parts list- Pedal

NO.	Parts number	Description	Qty.
1	WE07000004	GB894.1,Circlip for shaft 20,blackening	1
2	WC02000365	Pressure spring	1
3	WC02000108	Spring cover,galvanized	1
4	WC02000387	Seal ring UHS14	1
5	WC02000363	Pump core	1
6	WC02000390	Small roller, galvanized	1
7	WC02000391	Roller shaft, galvanized	1
8	WC02000069	GB308,Steel ball S7	1
9	WC02000393	Spring seat	1
10	WC02000375	Screw	1
11	WC02000401	Flanged sliding bearing 30/23x20x8	2
12	WE03000003	Gb73, Slotted set screws with flat point M8 x 20, galvanized	1
13	WC02000377	Unloading plate, black	1
14	WE04000003	GB6172.1, Hexagon thin nut M8, galvanized	1
15	WC02000378	Pin, galvanized	1
16	WE07000012	GB894.1,Circlip for shaft 8,blackening	1
17	WC02000397	Extension spring	1
18	WC02000395	Pedal stand, black	1
19	WC02000388	Dustproof ring DH14	1
20	WC02000399	Handle holder, black	1
21	WC02000400	Flanged sliding bearing 30/23x20x11.5	2
22	WE03000016	GB70.1,Hexagon socket head cap screw M5x16,galvanized	1
23	WC02000394	Rubber sleeve	1
24	WC02000396	Pedal, black	1
25	WC02000392	Spring	1
26	WC02000398	Pivot, galvanized	1
27	WE06000016	GB117, Taper pin 4 x 18, blackening	1



Parts list- Cylinder assembly (φ31.5)

NO.	Parts number	Description	Qty.
1	WC02000358	Cylinder body(1.0t/1.5t,1.6m),black	1
2	WC02000382	GB3452.1,O-ring φ15×2.65	2
3	WE07000004	GB894.1,Circlip for shaft 20,blackening	1
4	WE03000023	GB818,Pan head screw with cross recess M6×10,galvanized	1
5	WC02000383	GB982, Combination sealing gasket 6	1
6	WC02000364	Guide sleeve	1
7	WC02000385	GB3452.1,O-ring φ31.5×2.65	1
8	WC02000384	GB3452.1,O-ringφ34.5×2.65	1
9	WC02000362	Cap, galvanized	1
10	WC02000386	GB3452.1,O-ring φ31.5×3.55	1
11	WC02000110	Dustproof ring DHS31.5	1
12	WC02000369	Left screw plug	2
13	WC02000115	GB3452.1,O-ring φ16×1.8	2
14	WC02000381	Flow-limiting valve assembly	1
15	WC02000389	GB982, Combination sealing gasket 12	1
16	WC02000376	Screw plug, galvanized	1
17	WC02000045	Safety valve spool	1
18	WC02000374	Adjusting spring	1
19	WC02000375	Screw	1
20	WC02000372	Spool	1
21	WC02000370	Spool spring	1
22	WC02000371	Valve sleeve	1
23	WC02000132	GB3452.1,O-ring φ9.0×1.8	1
24	WC02000373	Sealing gasket	1
25	WC02000069	GB308,Steel ball S7	1
26	WC02000366	Dust cover	1
27	WC02000368	Unloading spring	1
28	WC02000367	Unloading rod	1
29	WC02000117	GB3452.1,O-ring φ6.9×1.8	2
30	WC02000361	Piston	1
31	WC02000360	Piston rod (1.0t / 1.5t, 1.6m)	1
32	WC02000380	Piston guide ring ZS35	1
33	WC02000379	Sealing ring YXD35	1

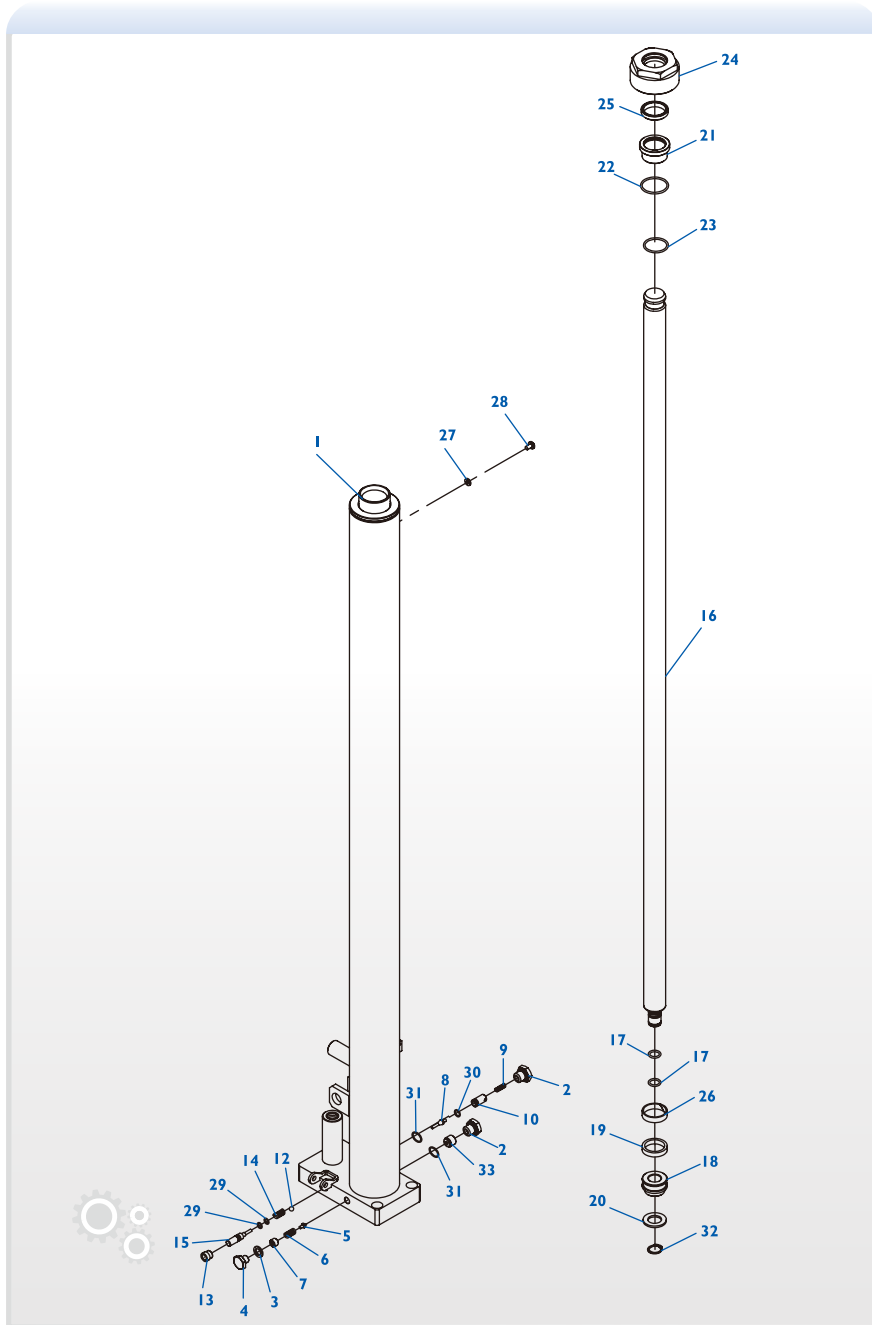


Parts list· Cylinder assembly (φ35)

NO.	Parts number	Description	Qty.
1	WC02000437	Cylinder (2.0t,1.6m),black	1
	WC02000414	Cylinder (2.5m), black	
	WC02000418	Cylinder (3.0m), black	
2	WC02000369	Left screw plug	2
3	WC02000389	GB982, Combination sealing gasket 12	1
4	WC02000376	Screw plug, galvanized	1
5	WC02000045	Safety valve spool	1
6	WC02000374	Adjusting spring	1
7	WC02000375	Screw	1
8	WC02000372	Spool	1
9	WC02000370	Spool spring	1
10	WC02000371	Valve sleeve	1
11	WC02000373	Sealing gasket	1
12	WC02000069	GB308,Steel ball S7	1
13	WC02000366	Dust cover	1
14	WC02000368	Unloading spring	1
15	WC02000367	Unloading rod	1
16	WC02000438	Piston rod (2.0t, 1.6m)	1
	WC02000410	Piston rod(2.5m)	
	WC02000419	Piston rod(3.0m)	
17	WC02000382	GB3452.1,O-ring φ15×2.65	2
18	WC02000411	Piston	1
19	WC02000407	QYD seal ring 40 × 32 × 8	1
20	WE05000014	GB95,Plain washer 20,galvanized	1
21	WC02000413	Guide sleeve	1
22	WC02000409	GB3452.1,O-ring φ39.5×2.65	1
23	WC02000384	GB3452.1,O-ringφ34.5×2.65	1

NO.	Parts number	Description	Qty.
24	WC02000412	Cap, galvanized	1
25	WC02000058	Dustproof ring DH35	1
26	WC02000408	Piston guide ring ZS40	1
27	WC02000383	GB982, Combination sealing gasket 6	1
28	WE03000023	GB818,Pan head screw with cross recess M6×10,galvanized	1
29	WC02000117	GB3452.1,O-ring φ6.9×1.8	2
30	WC02000132	GB3452.1,O-ring φ9.0×1.8	1
31	WC02000115	GB3452.1,O-ring φ16×1.8	2
32	WE07000004	GB894.1,Circlip for shaft 20,blackening	1
33	WC02000381	Flow-limiting valve assembly	1

Parts list· Cylinder assembly (φ35)

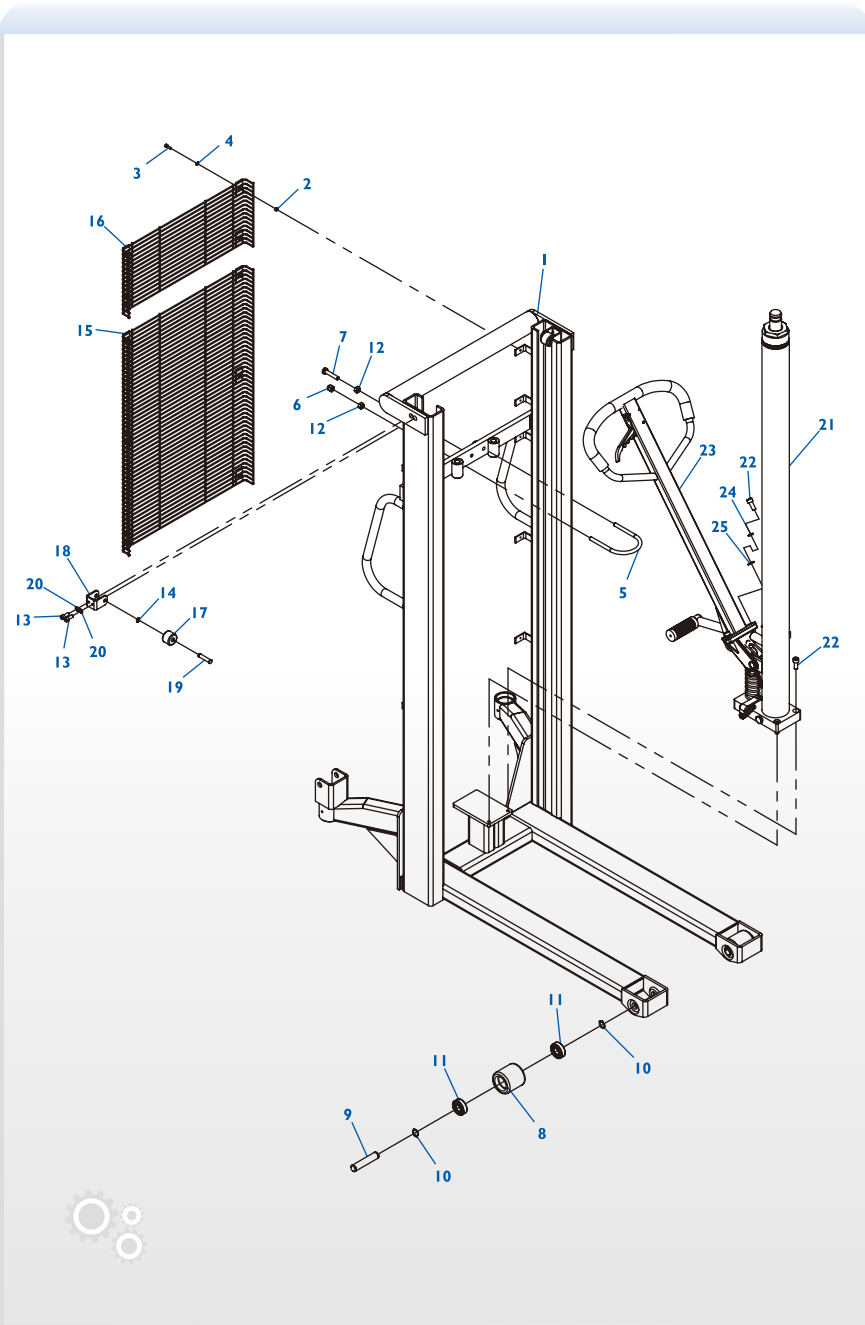


Parts list· External frame

H10/15/20 Series Manual Pallet Stackers

NO.	Parts number	Description	Qty.
1	WC02000405	External frame (1.0t, 2.5m, fixed), 5012	1
	WC02000420	External frame(1.0t,3.0m,movable),5012	
2	WE04000005	GB6170,Hexagon nut M5,galvanized	10
3	WE03000016	GB70.1,Hexagon socket head cap screw M5×16,galvanized	10
4	WE05000004	GB95,Plain washer 5,galvanized	10
5	WC02000355	Locking ring, galvanized	1
6	WE04000013	GB802,Acorn nut--sssembling type M10,galvanized	2
7	WE01000002	Gb5781, Hexagon head bolts--Full thread M10 × 50, galvanized	1
8	WC02000227	Iron-core PU wheel φ70×70, bright red PU	2
	WC02000286	Nylon wheel φ70×70	
9	WC02000259	Front wheel shaft	2
10	WE07000004	GB894.1,Circlip for shaft 20,blackening	4
11	WC02000022	GB276,Deep groove ball bearing 6204, two-side shielded	4
12	WE04000009	GB6170,Hexagon nut M10,galvanized	3
13	WE03000014	GB70.1,Hexagon socket head cap screw M8×20,galvanized	4
14	WE07000008	GB894.1,Circlip for shaft 10,blackening	2
15	WC02000406	Guarding screen (2.5m), black	1
	WC02000357	Guarding screen (3.0m), black	
16	WC02000292	Guarding screen, black	1
17	WC02000293	Upper guide wheel	2
18	WC02000294	Upper guide bracket, galvanized	2
19	WC02000295	Pivot	2
20	WE05000005	GB93,Normal type spring lock washer 8, galvanized	2
21	WC01000022	Cylinder assembly (2.5m), black	1
	WC01000023	Cylinder assembly (3.0m), black	
22	WE03000004	GB70.1,Hexagon socket head cap screw M10×25,galvanized	5
23	WC02000338	EOS-HS handle	1
24	WE05000002	GB93,Normal type spring lock washer 10, galvanized	3
25	WE05000009	GB95,Plain washer 10,galvanized	3

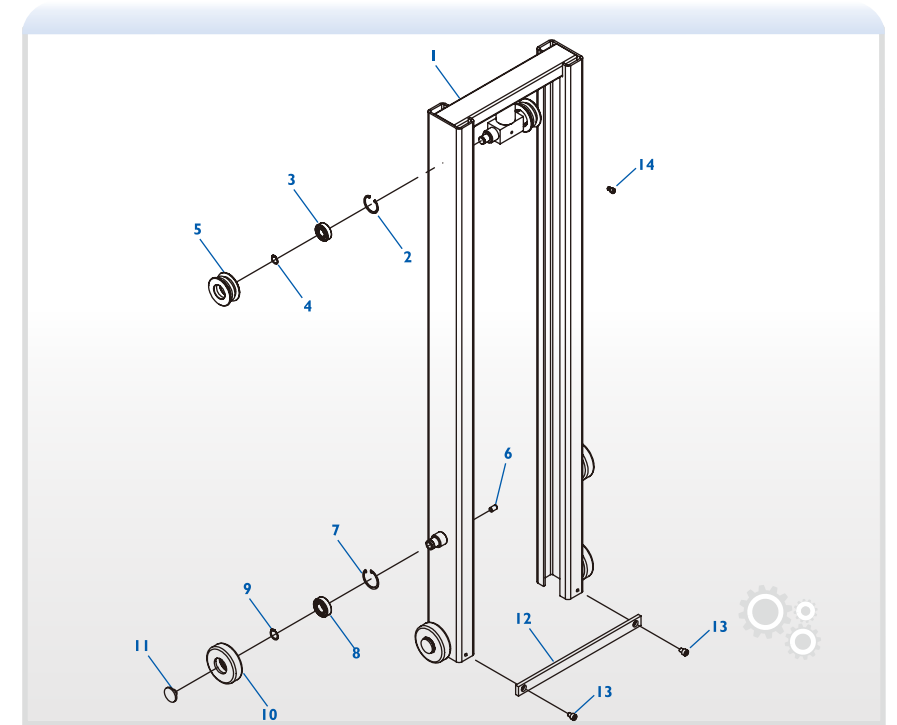
Parts list- External frame



Parts list- Internal frame

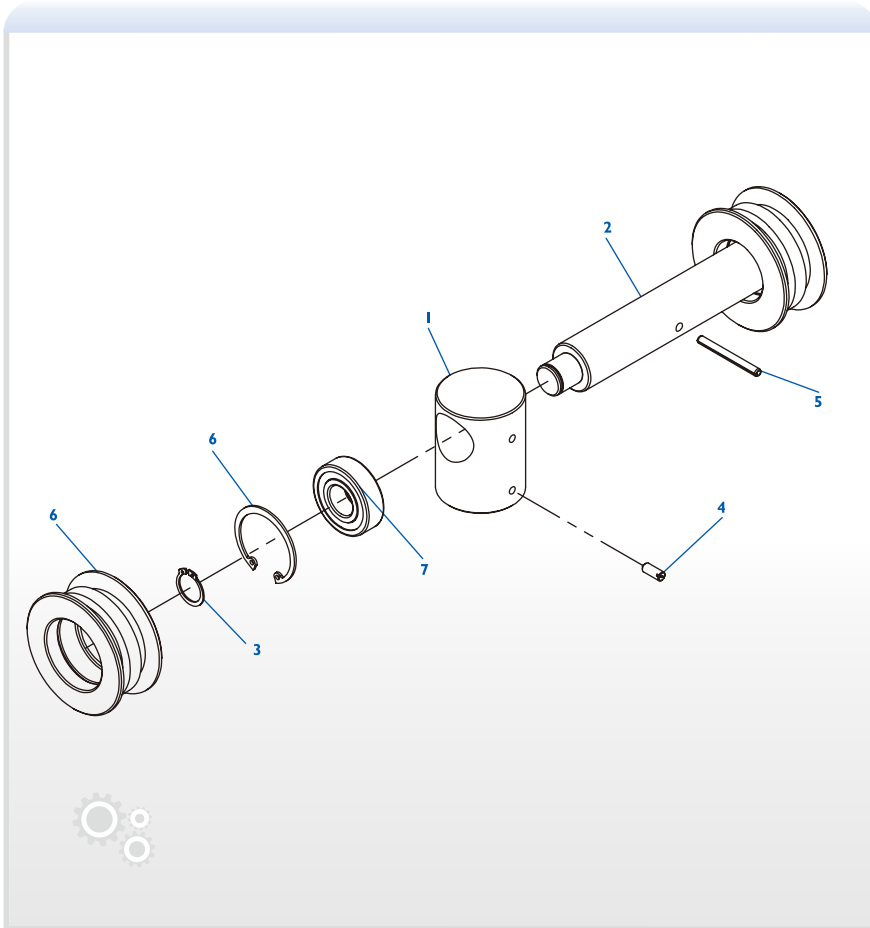
H10/15/20 Series Manual Pallet Stackers

NO.	Parts number	Description	Qty.
1	WC02000290	Internal frame, 5012 (2.5m)	1
	WC02000299	Internal frame, 5012 (3.0m)	
2	WE07000006	GB893.1,Circlip for hole 47,blackening	2
3	WC02000022	GB276,Deep groove ball bearing 6204, two-side shielded	2
4	WE07000004	GB894.1,Circlip for shaft 20,blackening	2
5	WC02000261	Sprocket (roller chain)	2
6	WE03000019	Gb77, Hexagon socket set screw with flat point M12x20,galvanized	8
7	WE07000007	GB893.1,Circlip for hole 52,blackening	4
8	WC02000224	GB276,Deep groove ball bearing 6205, two-side shielded	4
9	WE07000010	GB894.1,Circlip for shaft 25,blackening	4
10	WC02000231	Iron wheel	4
11	WC02000232	Iron wheel cap	4
12	WD01000211	Lower stay bar	1
13	WE03000020	GB70.1,Hexagon socket head cap screw M10x12,galvanized	2
14	WE03000017	GB70.1,Hexagon socket head cap screw M8x12,galvanized	1



Parts list- Top beam assembly

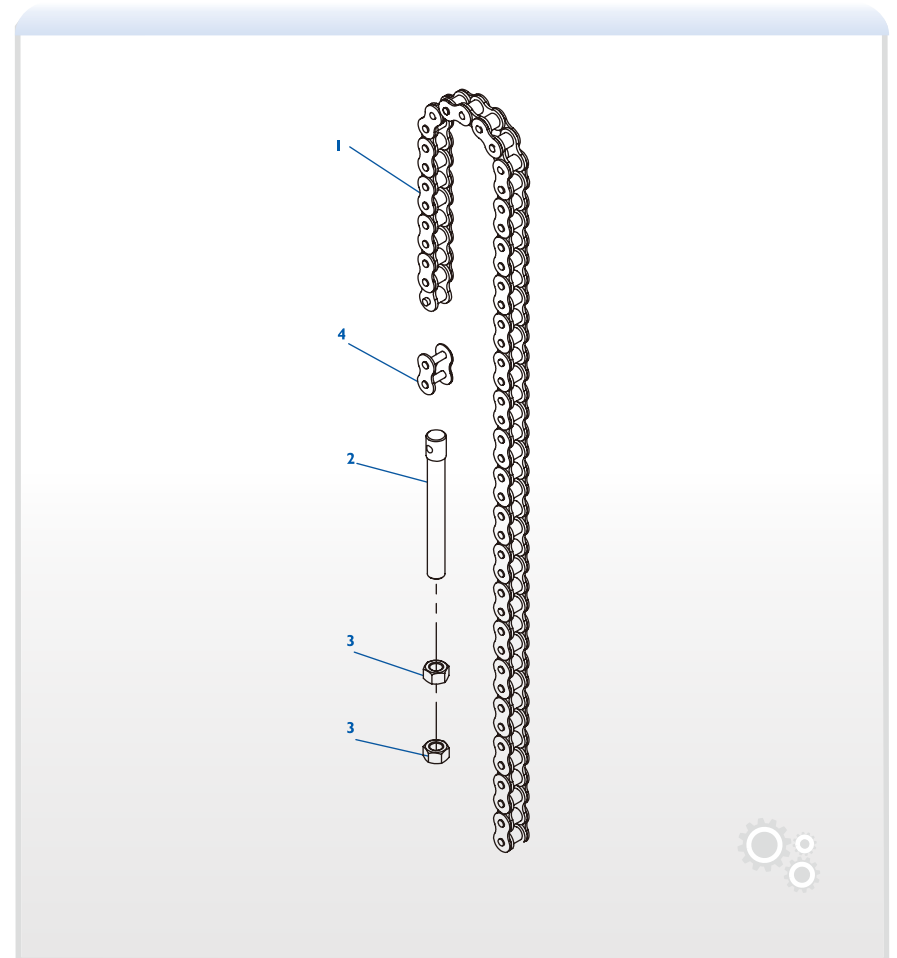
NO.	Parts number	Description	Qty.
1	WC02000354	Top beam seat,galvanized	1
2	WC02000356	Top beam shaft, galvanized	1
3	WE07000004	GB894.1,Circlip for shaft 20,blackening	2
4	WE03000022	GB71,Slotted set screws with flat point M6x16,galvanized	1
5	WE06000013	GB879.1, Spring type straight pin 5x50,blackening	1
6	WC02000261	Sprocket (roller chain)	2
	WC02000317	Sprocket (leaf chain)	
7	WC02000022	GB276,Deep groove ball bearing 6204, two-side shielded	2
8	WE07000006	GB893.1,Circlip for hole 47,blackening	2



Parts list- Roller Chain

H10/15/20 Series Manual Pallet Stackers

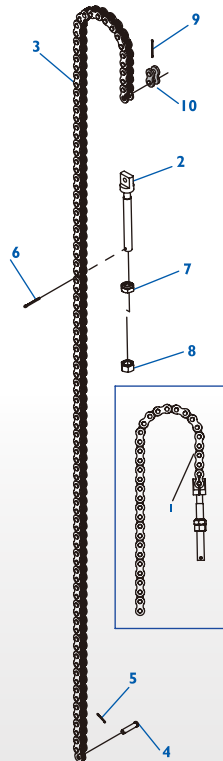
NO.	Parts number	Description	Qty.
1	WC02000340	Roller chain(1.6m)	2
	WC02000287	Roller chain(2.5m)	
	WC02000300	Roller chain(3.0m)	
2	WC02000260	Bolt	2
3	WE04000012	GB6170, Hexagon nut M14, galvanized	4
4	WC02000222	Single-row roller chain CL connector 12A-1	4



NOTE:For the 1.0t models.

Parts list- Leaf chain

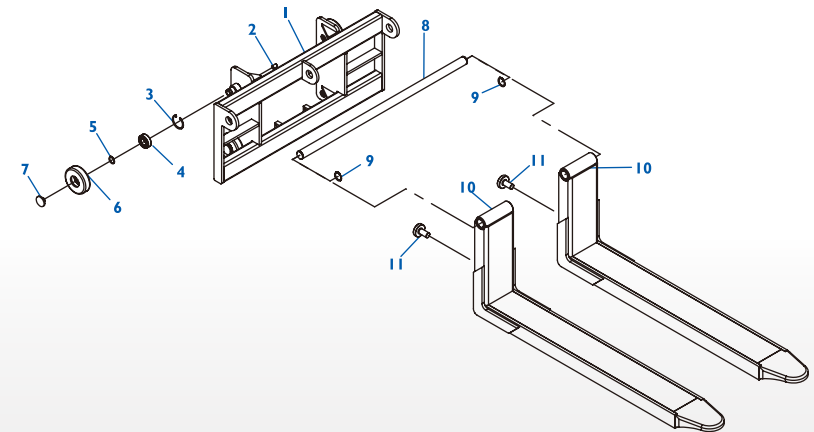
NO.	Parts number	Description	Qty.
1	WC02000423	Leaf chain, 58 links (1.6m)	2
2	WJ11900006	LH1223 long end connector	2
3	WJ11900007	Leaf chain	2
4	WJ11900015	Chain pivot	2
5	WJ11900003	GB91, Cotter pin 2 × 16	2
6	WJ11900001	GB91, Cotter pin 3.2 × 32	2
7	WJ11900005	Spherical nut	2
8	WJ11900004	GB6171, nut M14 × 1.5 × 12.8	2
9	WJ11900002	GB91, Cotter pin 2 × 32	2
10	WJ11900016	Chain shackle	2



Parts list- Movable fork assy

H10/15/20 Series Manual Pallet Stackers

NO.	Parts number	Description	Qty.
1	WC02000416	Fork guide plate bracket(1.0t), black	1
2	WE03000019	Gb77, Hexagon socket set screw with flat point M12x20,galvanized	8
3	WE07000007	GB893.1,Circlip for hole 52,blackening	4
4	WC02000224	GB276,Deep groove ball bearing 6205, two-side shielded	4
5	WE07000010	GB894.1,Circlip for shaft 25,blackening	4
6	WC02000231	Iron wheel	4
7	WC02000232	Iron wheel cap	4
8	WC02000404	Shaft (740) galvanized	1
9	WE07000011	GB894.1,Circlip for shaft 32,blackening	2
10	WC02000282	Fork assembly (1150), black	2
11	WC02000284	Adjusting screw,galvanized	2

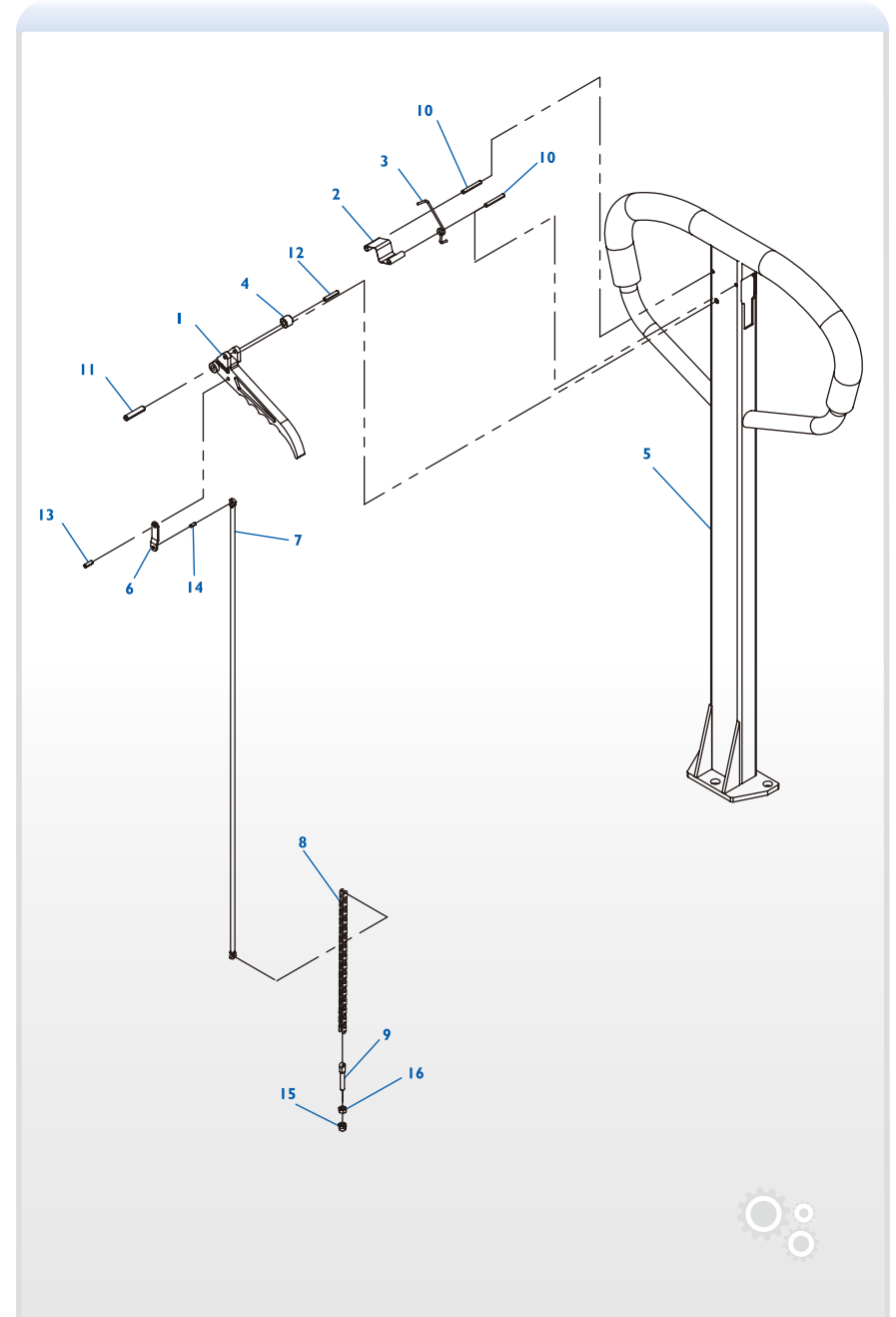


 NOTE:For the 1.5t and 2.0t models

 NOTE:For double mast models

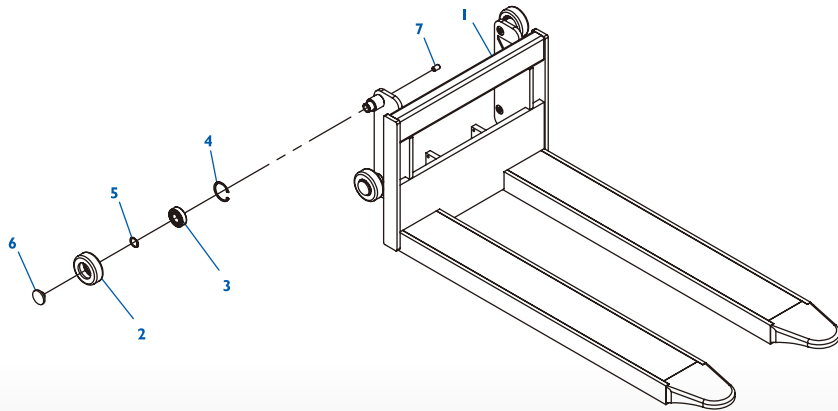
Parts list- Handle assemblies

NO.	Parts number	Description	Qty.
1	WJ10800036	Finger grip handle	1
2	WJ10800037	positioning plate	1
3	WJ10800038	torsion spring	1
4	WJ10800039	plastic roller	1
5	WJ10800040	handle welded	1
6	WJ10800041	Connecting sheet of pull rod	1
7	WJ10800042	pull rod	1
8	WJ10800043	chain	1
9	WJ10800044	adjusting bolt	1
10	WJ10800045	Spring type pin(10)	2
11	WJ10800046	Spring type pin(11)	1
12	WJ10800047	Spring type pin(12)	1
13	WJ10800048	Spring type pin(13)	1
14	WJ10800049	Spring type pin(14)	1
15	WJ10800050	nut(16)	1
16	WJ10800051	locking nut(15)	1



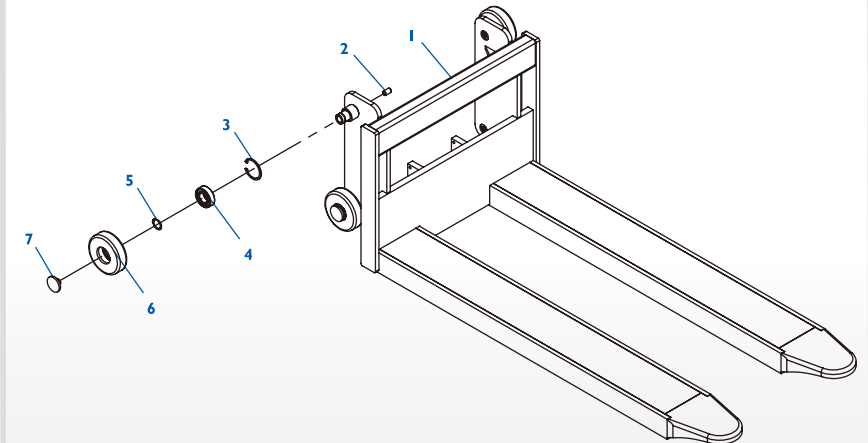
Parts list- Fixed fork assy


NO.	Parts number	Description	Qty.
1	WC02000339	Fixed fork (1.0t), black	1
	WC02000422	Fixed fork (1.5t), black	
2	WC02000341	Iron wheel	4
3	WC02000224	GB276,Deep groove ball bearing 6205, two-side shielded	4
4	WE07000007	GB893.1,Circlip for hole 52,blackening	4
5	WE07000010	GB894.1,Circlip for shaft 25,blackening	4
6	WC02000232	Iron wheel cap	4
7	WE03000019	GB77, Hexagon socket set screw with flat point M12x20,galvanized	8



Parts list- Fixed fork assy

NO.	Parts number	Description	Qty.
1	WC02000289	Fixed fork, black (1.0t)	1
2	WE03000019	Gb77, Hexagon socket set screw with flat point M12x20,galvanized	8
3	WE07000007	GB893.1,Circlip for hole 52,blackening	4
4	WC02000224	GB276,Deep groove ball bearing 6205, two-side shielded	4
5	WE07000010	GB894.1,Circlip for shaft 25,blackening	4
6	WC02000231	Iron wheel	4
7	WC02000232	Iron wheel cap	4



 NOTE:For single mast models

 NOTE:For double mast models