



SKU # 1005 415 776

Model # TY457-2011

ASSEMBLY INSTRUCTIONS

3.5 ft Polar Wishes LED Lying Deer

USE AND CARE GUIDE

PLANNING ASSEMBLY

Carefully remove all the parts from the box and place them on the ground. Many parts are connected by the lighting string that runs throughout the item. Take special care not to pull, cut or damage the lighting string. Read the entire manual prior to assembly and identify all the parts included in the package against the parts list. It is recommended to assemble parts of the product while laying flat on the ground versus standing the item up to assemble the parts. If any parts are missing or damaged do not attempt assembly but contact our customer service center or return to place of purchase with purchase receipt. 1-877-527-0313

***Assembly of this product may require more than one person.**

Pre-Operation

CAUTION: Grasp the plug to insert or remove from the power source. Do not unplug by pulling on cord.

CAUTION: The lighting string on this product is rated at 7.2 Watts (0.06 Amps). Do not overload. Do not connect to another lighting string, decorative outfit or other electrical products. Before you use or re-use this product inspect it carefully. Return to place of purchase with purchase receipt if the product has cuts, damage, frayed wire insulation on cords, cracks in the socket enclosures, loose connections, exposed copper wire or other obvious damage.

Care and Cleaning

- Carefully remove the product from wherever it is placed. This helps to avoid any undue strain or stress on the product connections and wires. If the product is placed somewhere other than the ground it should be well secured and flat.
- Carefully disassemble the unit taking caution not to cut any electrical wires.
- Wipe the unit with a damp cloth and allow the unit to dry before storing.
- Store the product neatly in a cool, dry location protected from sunlight.

Troubleshooting

- Ensure that the floor or surface that the item sits on is flat and level
- Be sure to plug the item correctly to a wall outlet or a UL Listed Power Cord
- Ensure all parts are assembled properly per the Instruction Manual
- If the item does not light check for loose or broken bulbs and connections
- Do not plug into other electrical items
- If the item has multiple Light String Cords be sure to plug in all cords
- Check for Broken or Burned Out Fuse In Plug

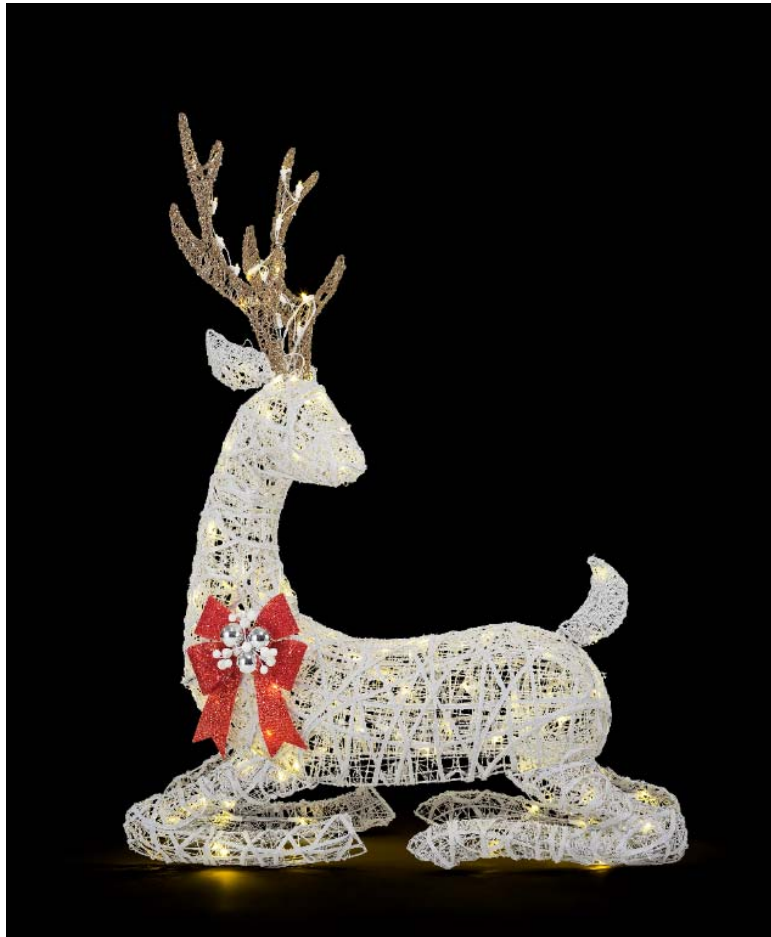
Guarantee

What is Covered

The product is intended for residential seasonal use for 90 days per year. This product is covered by a 90 days limited guarantee due to defects in material and workmanship. Return the product with purchase receipts to the location of purchase for refund within 90 days of purchase.

What is Not Covered

This warranty does not cover commercial use, normal wear and tear, products not used in accordance with directions provided on or with the product, burn out of bulbs or LEDs, batteries, products that have been subjected to unauthorized repair and/or modification and damage caused by shipping and improper handling, alterations, misuse, in store display models or accidents. Questions, problems, missing parts? Before returning to the store, call Home Accents Holiday Customer Service 8 a.m.-6 p.m., EST, Monday-Friday 1-877-527-0313



Thank you!

We appreciate the trust and confidence you have placed in Home Accents through the purchase of this 3.5 ft Polar Wishes LED Lying Deer. We strive to continually create quality products designed to enhance your home. Visit us online to see our full line of products available for your home improvement needs. Thank you for choosing Home Accents!

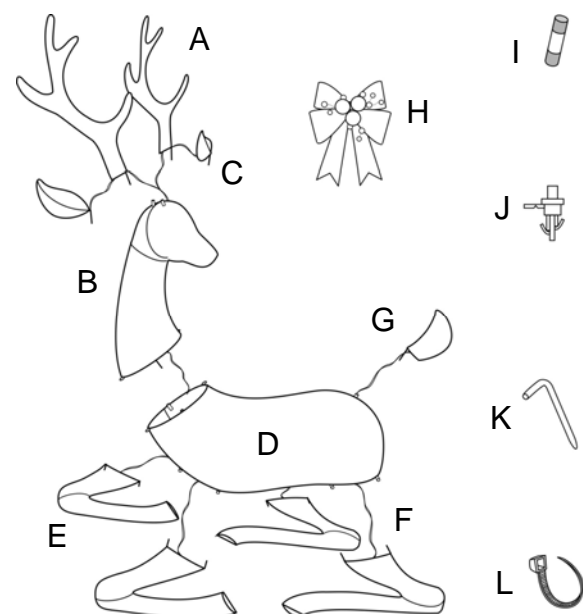
1-877-527-0313

HOMEACCENTSHOLIDAY.COM

Parts List		
Locater	Name	Qty.
A	Antler	2
B	Head/Neck	1
C	Ear	2
D	Body	1
E	Front Leg	2
F	Hind Leg	2
G	Tail	1
H	Bow Tie	1

Hardware List		
Locater	Name	Qty.
I	Spare Fuse	2
J	Spare Bulb	3
K	Ground Stake	4
L	Plastic Ties	15

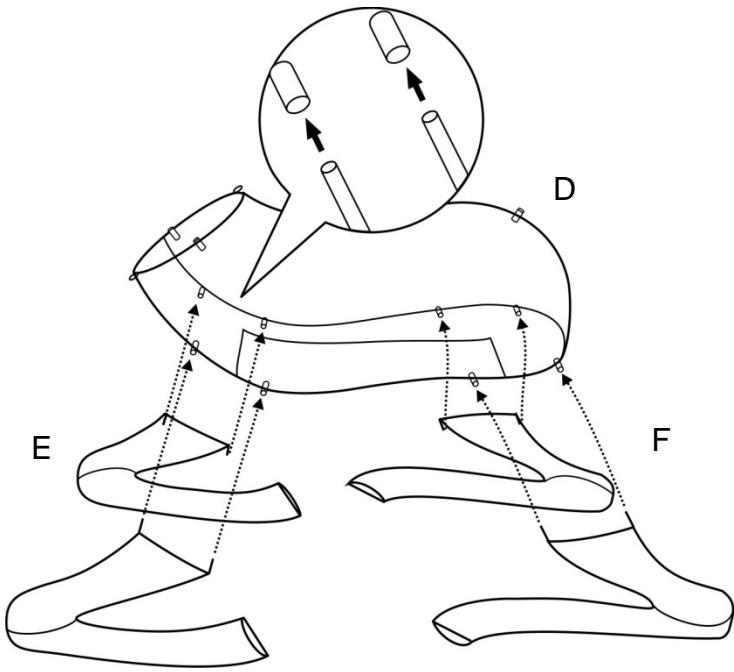
Diagram of Parts



ASSEMBLY

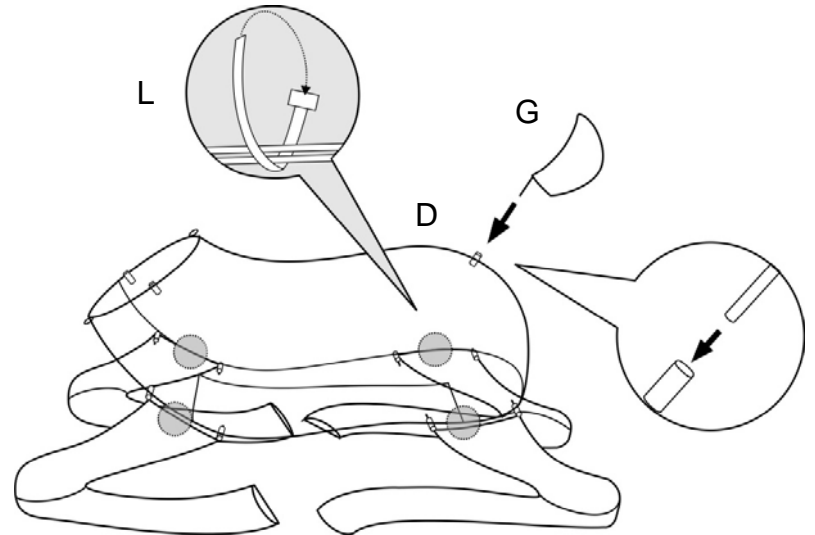
1 Assembling the Legs to the Body

Insert the metal connecting rods attached to each Front and Hind Leg (E,F) into the connecting holes on the underside of the Body (D).



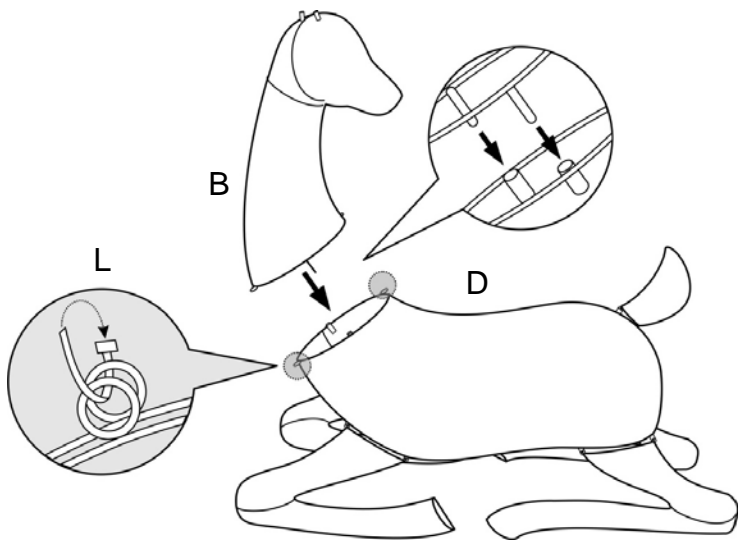
2 Assembling the Tail to the Body and Fastening the Legs to the Body

Fasten the Legs and Body together with Plastic Ties (L) over the metal frame where they meet. Insert the connecting rod on the Tail (G) into the connecting hole on the rear of the Body (D).



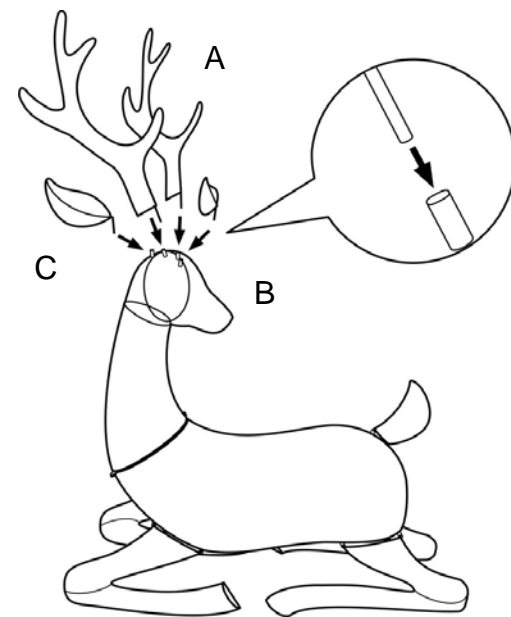
3 Assembling the Head/Neck to the Body

Insert the connecting rods on the bottom of the Head/Neck (B) into the connecting holes on the front of the Body (D) then fasten together at the connecting loops with the Plastic Ties (L).



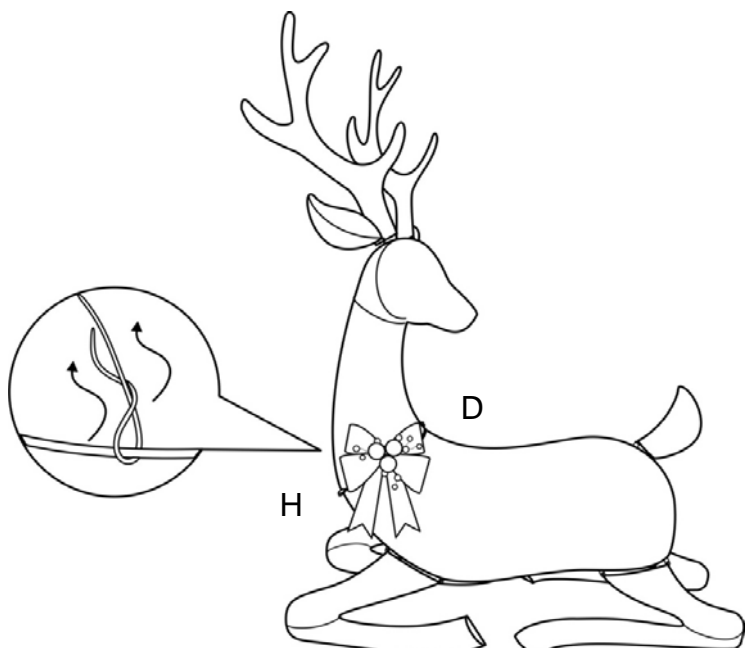
4 Assembling the Antlers and Ears to the Head

Insert the connecting rods on both the Antlers and Ears (A,C) into the connecting holes at the top of Head/Neck (B).
[Note: The Ears go to the outside of the Antlers]



5 Assembling the Bow Tie

Insert the connecting wires on the Bow Tie (H) through the material of the Body (D) then twist the wires together to secure.



6 Securing the Deer to the Ground

Secure the Deer to the ground with the Ground Stakes (K) by placing a Ground Stake over the metal frame on each Leg then into the ground.

