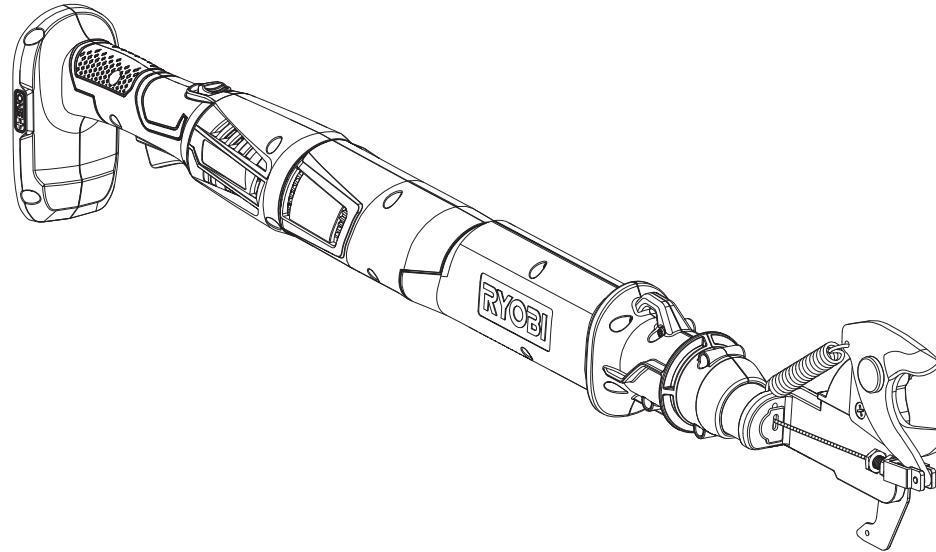


# REPAIR SHEET

BRAND <b>RYOBI</b>		DESCRIPTION  <b>18 Volt Lopper</b>
MODEL NO. <b>P4362</b> <b>P4362VNM</b>	MFG. NO. <b>107444001</b> <b>108760003</b>	



## TECHTRONIC INDUSTRIES POWER EQUIPMENT

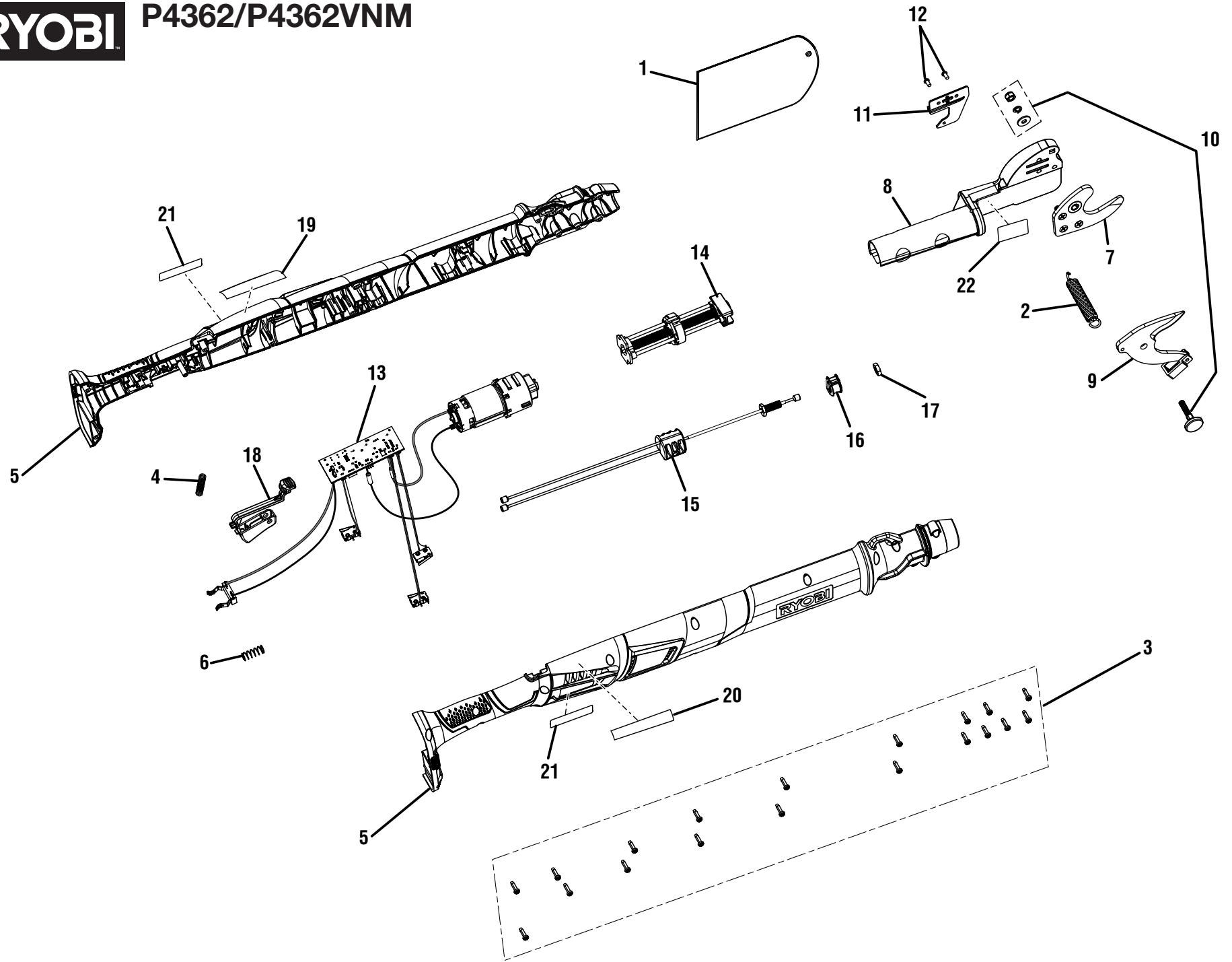
P.O. Box 1288, Anderson, SC 29622 ■ 1-800-525-2579 ■ [www.ryobitools.com](http://www.ryobitools.com)

6-30-21 (Rev:02)

*The model number and manufacturing location will be found on a label attached to the product. Always mention this information in all communications regarding this product and when ordering parts.*

**RYOBI**

P4362/P4362VNM





# P4362/P4362VNM

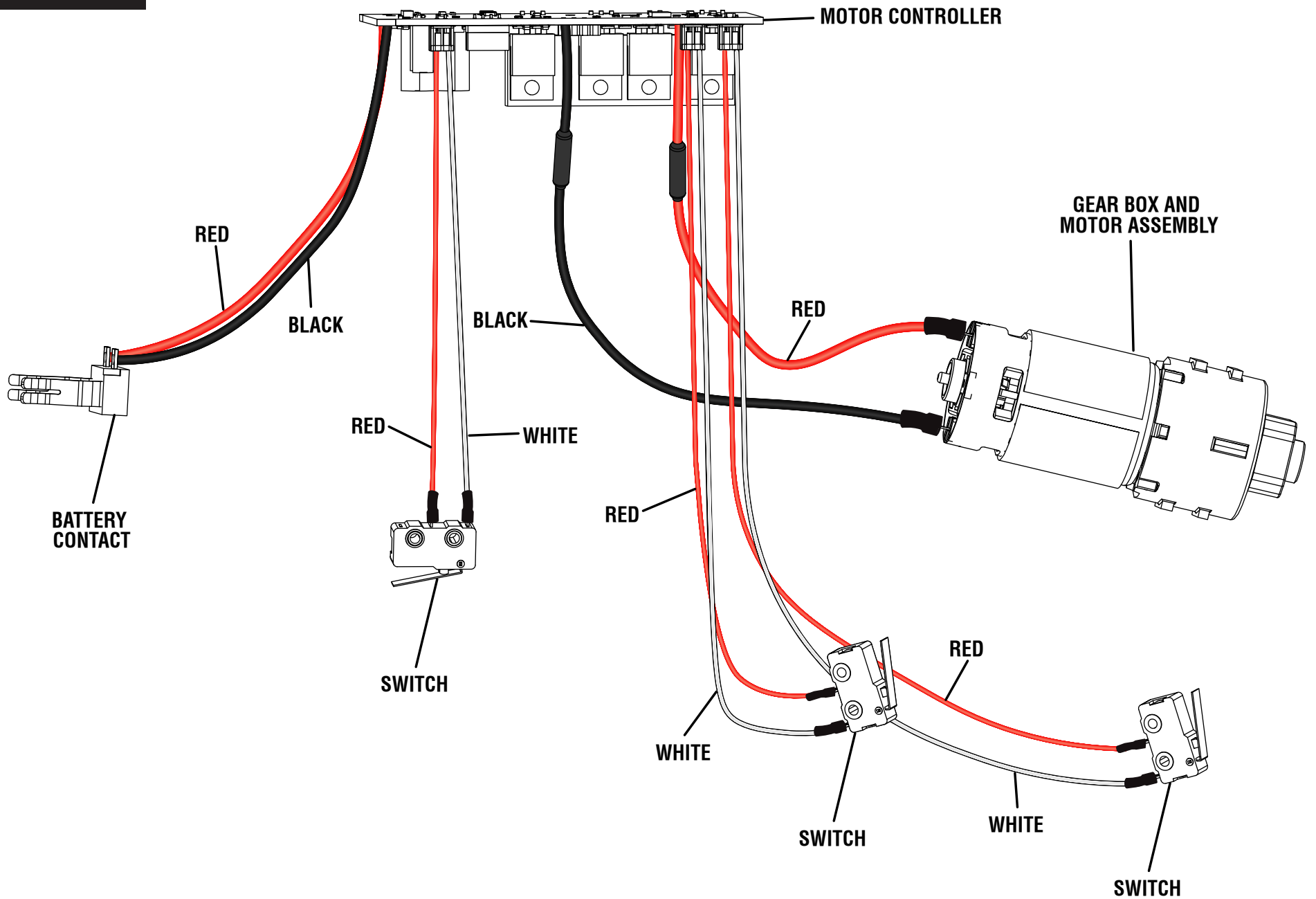
## PARTS LIST

KEY NO.	PART NO.	DESCRIPTION	QTY.
1	903403001	Blade Cover	1
2	697601001	Spring	1
3	661817001	Screw (M4 x 13.5 mm, T15 Torx Pan Hd.)	19
4	696661001	Spring	1
5	317296001	Handle Assembly (Inc. Key Nos. 19-21, P4362)	1
	318497001	Handle Assembly (Inc. Key Nos. 19-21, P4362VNM)	1
6	679002002	Compression Spring	1
7	314984001	Bottom Blade Assembly	1
8	317297001	Cutting Head Assembly (Inc. Key No. 22)	1
9	314464001	Cutting Blade Assembly	1
10	313756001	Bolt Assembly	1
11	639929001	Cutting Head Hook	1
12	660212054	Screw (M4 x 8 mm, Pan Hd.)	2

KEY NO.	PART NO.	DESCRIPTION	QTY.
13	317299001	Gear Box, Motor, and Motor Controller Assembly	1
14	312905001	Power Screw Assembly	1
15	315299002	Cable Assembly	1
16	565594001	Rubber Seal	1
17	662828001	Hex Nut (M8)	1
18	317298001	Trigger and Safety Button Assembly	1
19	941588800	Icons/Warning Label	1
20	941588801	Data/Warning Label (P4362)	1
	941110066	Data/Warning Label (P4362VNM)	1
21	940705519	Logo Label	2
22	941588802	Instruction/No Hands Label	1
	<b>Not Shown:</b>		
	998000306	Operator's Manual	1



P4362/P4362VNM



**WIRING DIAGRAM**