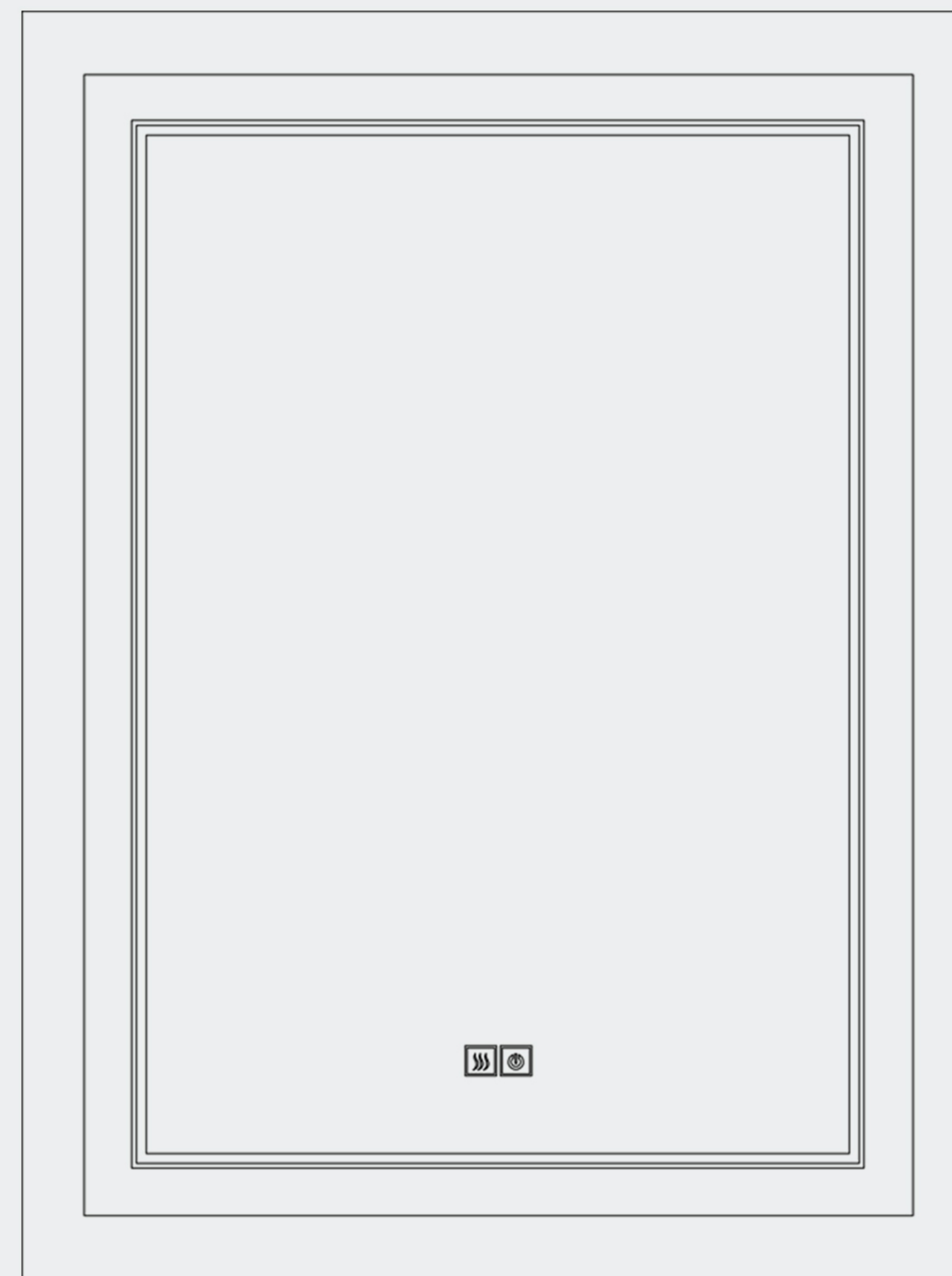




[www.neutypechic.com](http://www.neutypechic.com)

**DE Warehouse Address in Eastern US:**  
310 Cornell Drive suite B4, Wilmington, DE 19801  
**Contact:** TLZ JPLD  
**Cellphone:** 302-660-8585

**Chino Warehouse Address in Western US:**  
13620 Benson Ave. Suite B Chino, CA. 91710  
**Contact:** JPLD, Sheng tlz  
**Cellphone:** 909-599-03598



## **LED MIRROR**

---

## **OPERATING MANUAL**



NEUTYPECHIC

— N31E120 —



NEUTYPECHIC

— N31E120 —



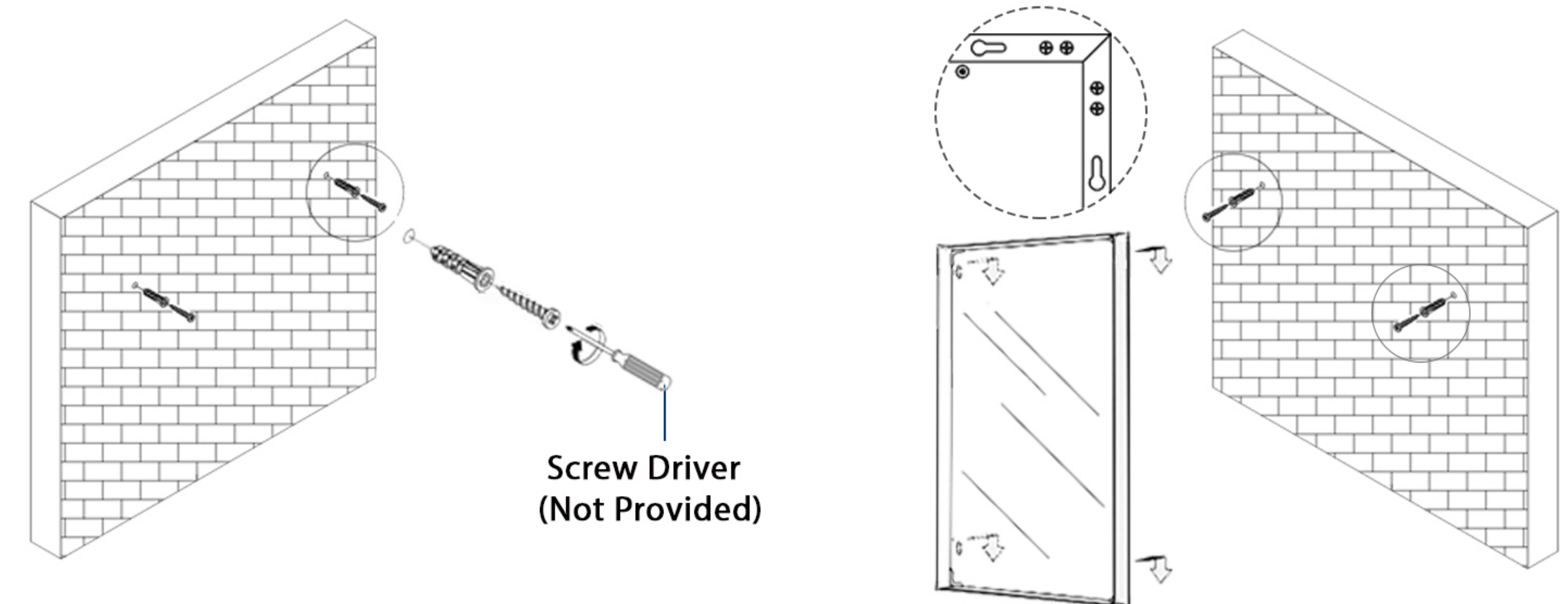
## SAFETY INSTRUCTIONS

---

- ⚠ Please read the instruction carefully before using.
- ⚠ Before assembly compare the contents with list to make sure the package includes all the parts.
- ⚠ Make sure the wall can bear the weight of the mirror.
- ⚠ Do not use string or chain to hang the products.
- ⚠ Please keep your property away during the installation to avoid any damage.

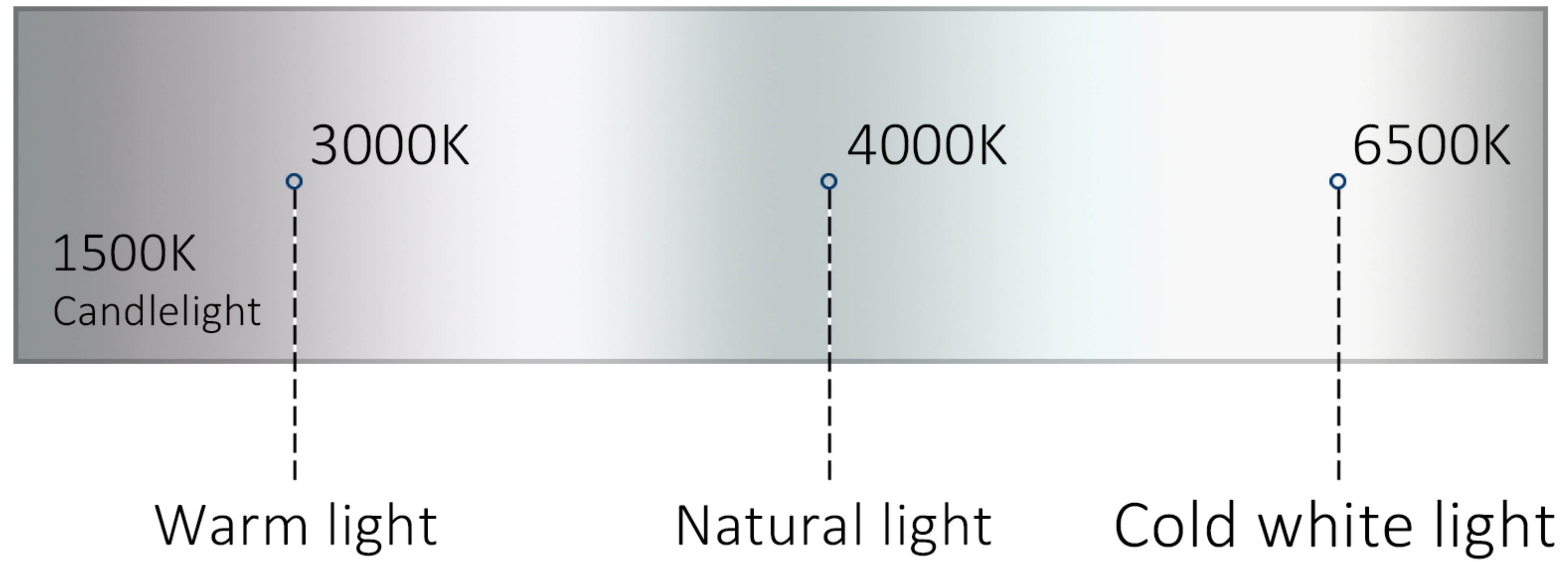
## INSTALLATION METHODS

---



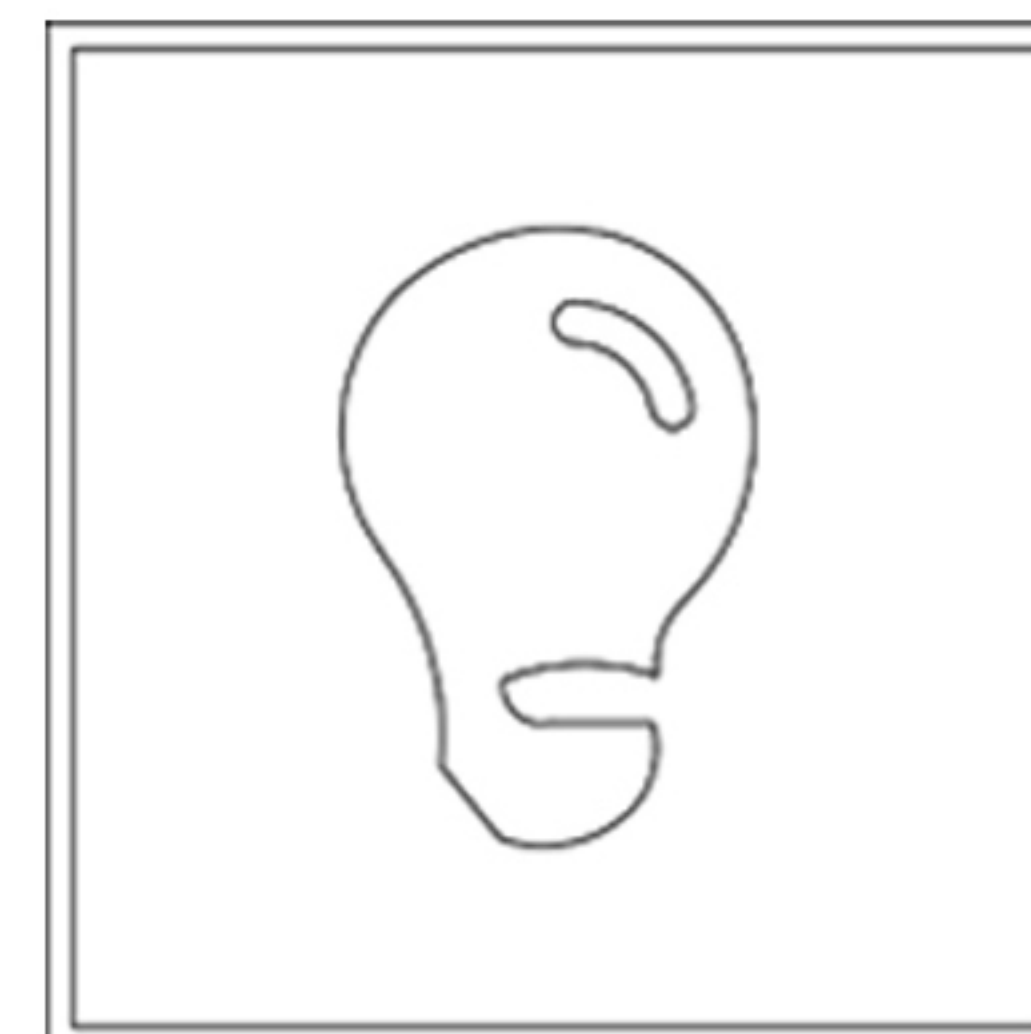
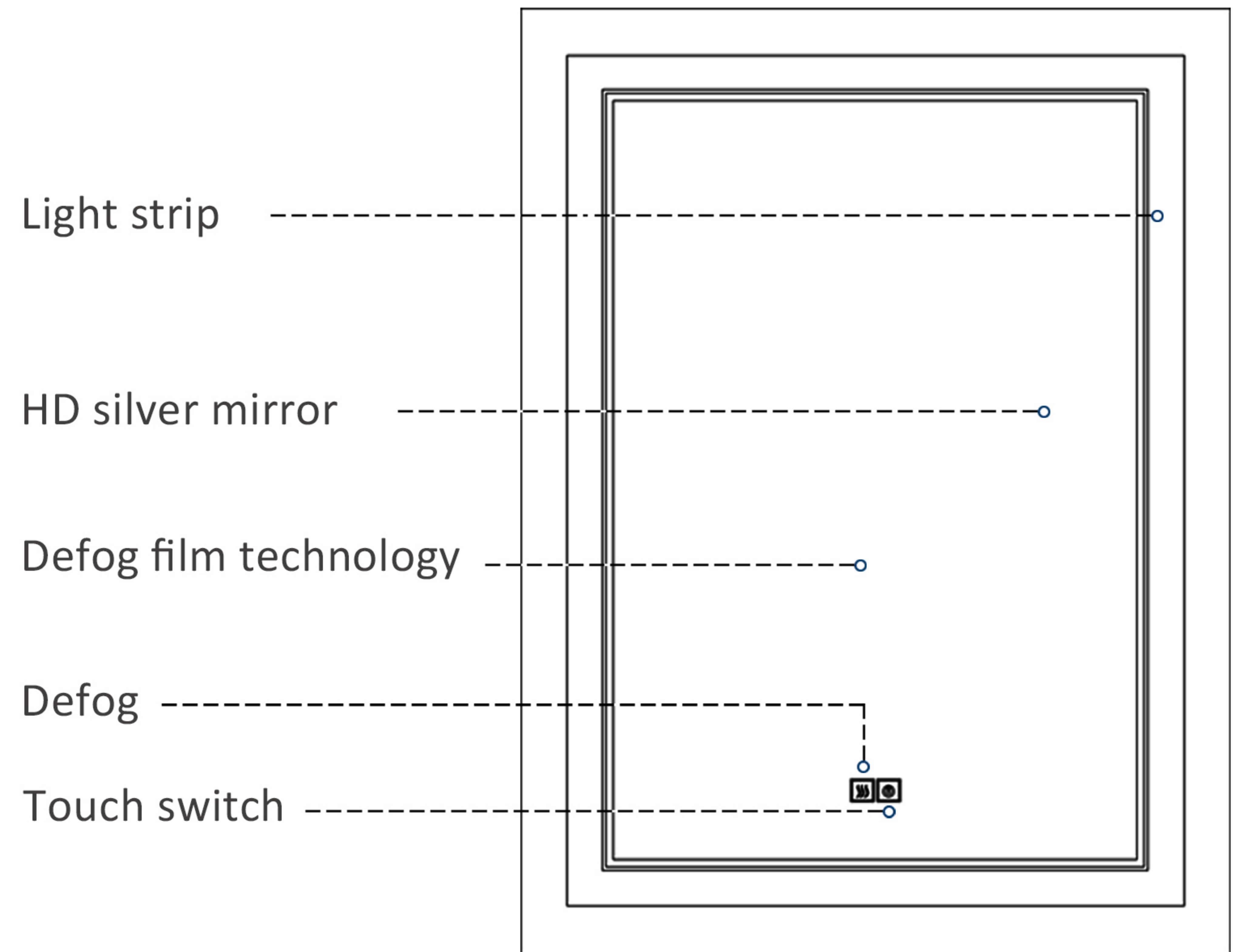
1. Measure the hole distance between two hanging clamps on the wall.
2. Mark the distance on the wall at a required height.
3. Drill holes on the wall as arranged position.
4. Put the plastic expansion screw into the holes.
5. Put the metal screws into the plastic expansion screws.
6. Hang the mirror onto the wall.

## SPECIFICATIONS

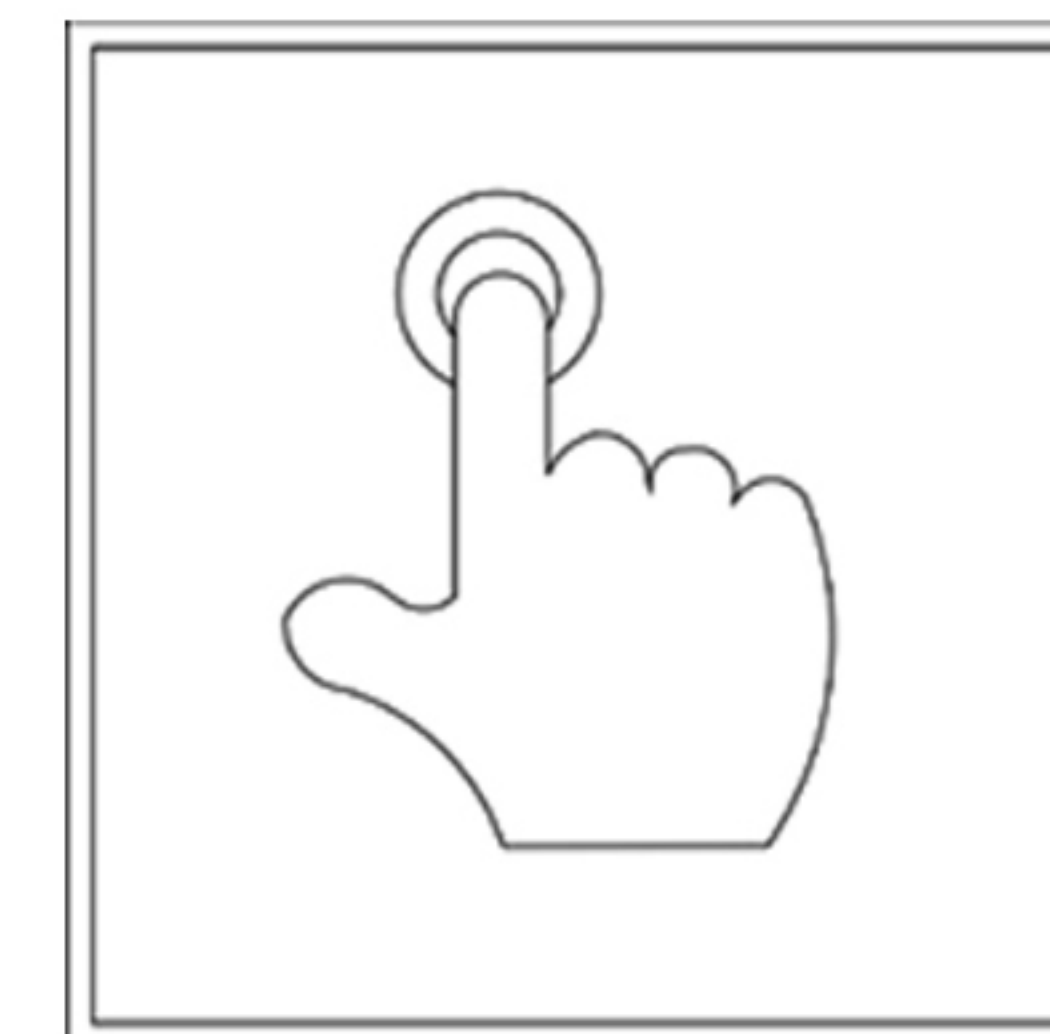


1. Material: Glass+aluminum
2. LED color temperature: 6500K/4000K/3000K
3. Power Supply: Power driven, AC100V
4. Certification: CE/UL/IP44
5. Function: Intelligent dimming, electronic anti-fog

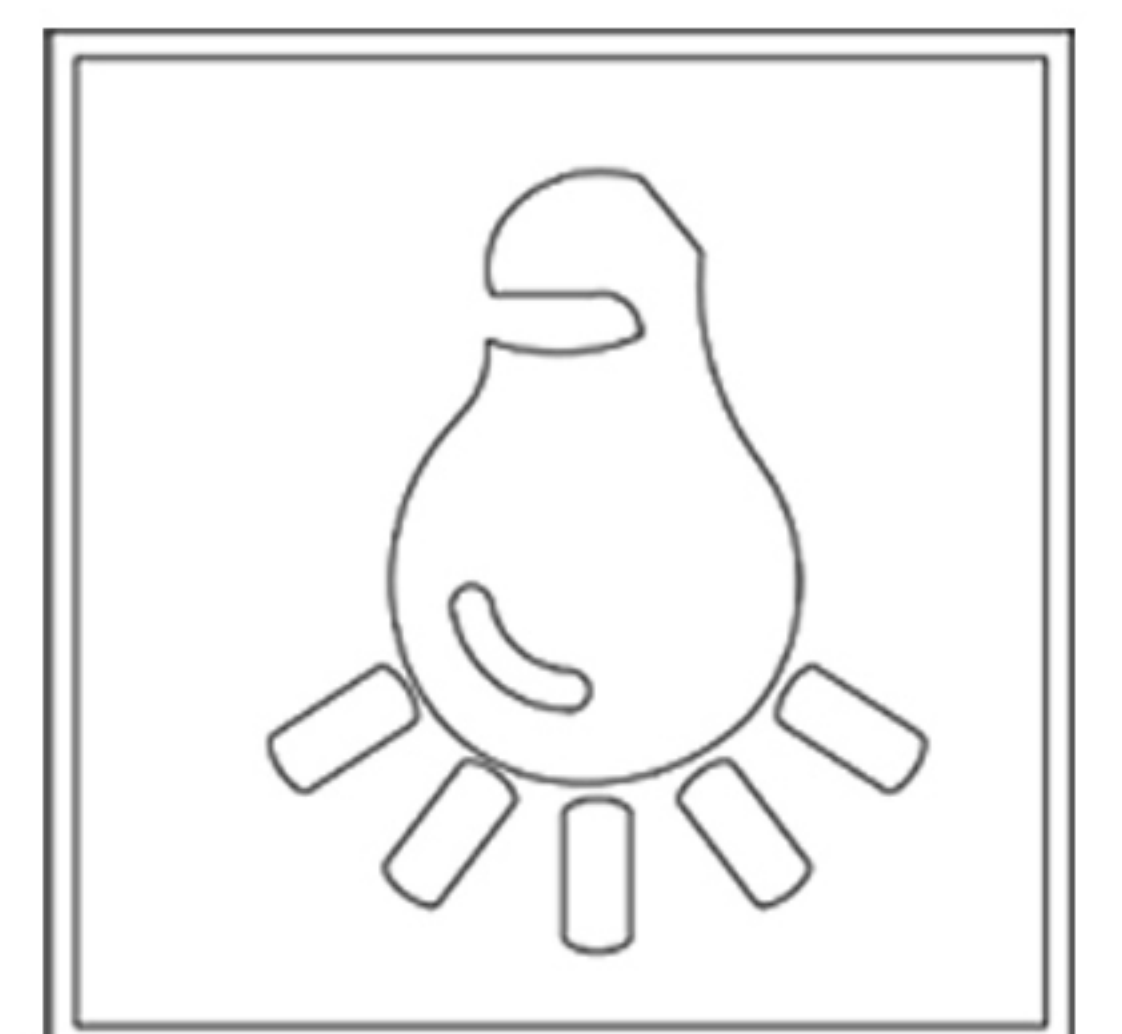
## ILLUSTRATION



Energy saving



Touch screen switch



LED lighting

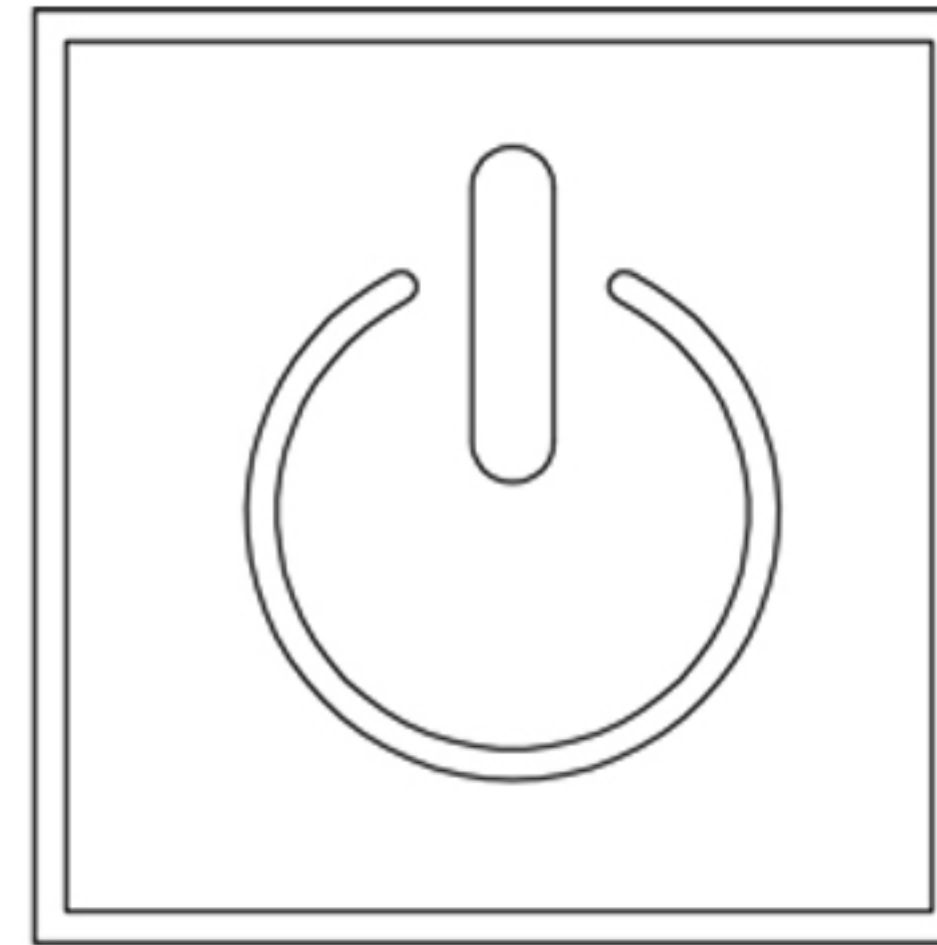
**First touch:** turn on the LED light-white light

**Second touch:** changes to warm light

**Third touch:** changes to natural light

**Fourth touch:** turn off the light

Long press the touch switch, changes to any color temperature you prefer, and can keep this memory for your next time operation.



Touch once, it will be on.

If you use this function for long time, please do not touch it with your hands.

## BACK VIEW

