

SYMMONS® Laundry-Mate™

Automatic Washing Machine Valve

W-400, W-500-B

Installation Instructions



Model W-500-B

Model Numbers

☐ W-400 Valve assembly



☐ W-500-B Valve assembly with enclosure




Need Help?

Contact Symmons customer service at
(800) 796-6667, (781) 848-2250

Email: customerservice@symmons.com

Monday - Friday 7:30 am - 7:00 pm EST

 Please check Symmons website for technical help, the latest product information and warranty policy at www.symmons.com/service

Step 1 Sweat union ells to 1/2 inch copper tubing.

Step 2 Screw union ells to wall.

Step 3 Mount valve to wall.

Step 4 Attach handle lever to valve.

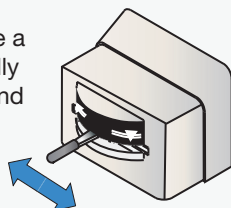
Step 5 Attach water supply hoses from washing machine to valve.

Step 6 Snap enclosure onto valve.
(model W-500-B only)

Step 7 Slide handle sleeve over end of handle lever.

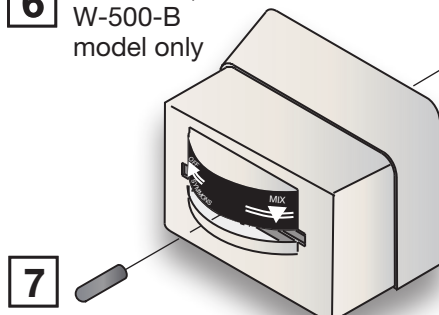
Operation

Single lever works like a switch by automatically controlling both hot and cold water supply to machine.



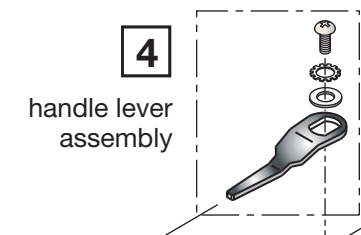
Switch water supply off after use to prevent bursting supply hoses and protect machine solenoid valves.

6 Enclosure,
W-500-B
model only



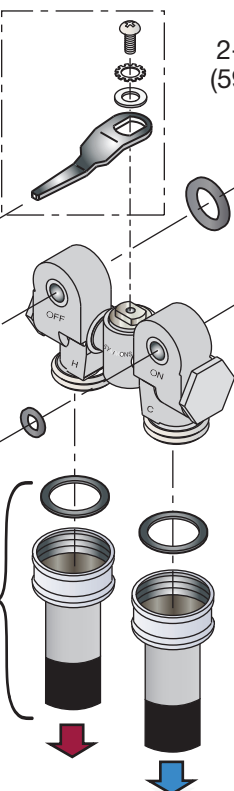
7

4
handle lever
assembly



3

5
Washing machine
hoses and washers
(not included)



2-5/16"
(59 mm)

2

Note: wood
screws not
included

1

1/2 inch
copper tubing
(not included)

HOT
supply

COLD
supply