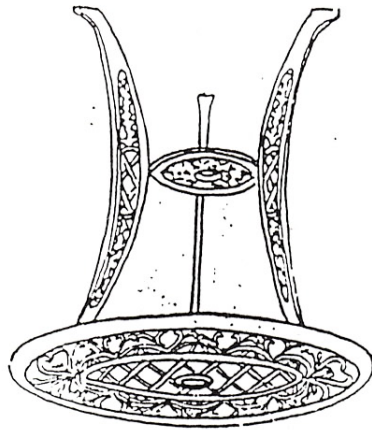


6/21



ASSEMBLY INSTRUCTIONS

3005

Parts List

- Table top
- Table legs with adjustable leveling pads
- Center plate
- Slotted headless bolt
- Flat washer, lock washer and nut

ASSEMBLY:

We suggest you assemble the unit on a soft surface to avoid damage to the finish.

Step 1-Place the table top on a soft surface, upside down. Install slotted headless bolts in the predrilled holes in the base of the table top. Connect the table legs using flat, lock washers under the nuts. Finger tighten only.

Step 2-Install slotted headless bolts in the predrilled holes in the base of the center plate. Connect the center plate and table legs in the same manner. Finger tightens only.

Step 3-Stand the unit upright on a flat, level surface. Align the top, center plate and legs so the unit is level and the legs are evenly spaced. Tighten all the bolts and nuts until the table is firmly assembled.

The table is now ready for use.

CAUTION

The unit is constructed of cast metal and is brittle. Do not force any part of the assembly and do not over tighten the fasteners, severe damage may occur.