



AMES®

BLUE MAX®

TROWEL GRADE

Liquid Rubber!

IT FILLS CRACKS/CREVICES TO FORM A WATERTIGHT SEAL THAT WITHSTANDS EMERSION

5 Gallons (18.925 Liters)



What is Ames® Blue Max® Trowel Grade?

Ames® Blue Max® Trowel Grade is a special blend of elastomeric liquid rubber which is high in solids to fill cracks and crevices. It dries to a tough flexible membrane. It is a high strength adhesive filler with minimal shrink or sag. It will fill voids and cracks. No stirring required. It is easy to apply straight from the container with a trowel, putty, or tape knife.

This product is blue in color, low odor, and is high in solids. Its consistency is a thick creamy paste. Ames® Blue Max® Trowel Grade contains no petroleum distillates; is non-toxic; environmentally friendly; and easily cleans up with water. Once cured, it does not re-emulsify.

Ames® Blue Max® comes in two grades: Trowel Grade suitable for caulking or as a filler; and Regular Grade which completes a seamless uniform coating that is impervious to water with adequate dry mil thickness. Both Ames® Blue Max® products are extremely adhesive and out performs most asphalt emulsions.

They are designed to expand and contract with the surface to resist cracking or peeling. Ames® Blue Max® products are especially effective in saving and extending the life of old basements, bearing walls, and foundations. They provide significant strength to older surfaces that have degraded over time.

Ames® Blue Max® Trowel Grade is a filler for cracks and crevices. Once coated over with Ames® Blue Max® Regular Grade or Ames® Block & Wall® Rubber Formula; Ames® Blue Max® Trowel Grade will set up as a durable rubber. Sealing leaks and covering surface foundation imperfections. Ames® products are the best technology today for waterproofing in extreme wet situations such as: below grade foundations, basement walls, and cisterns.

Ames® Blue Max® products can be used on ICF by both professional contractors and homeowners. Exterior above grade applications must be top coated for UV protection. Ames® Blue Max® products work as a primer and waterproofing membrane for Ames® Paint & Prime®; Block & Wall® Acrylic; Block & Wall® Rubber Formula; and many other Ames® coatings.



Waterproofs & Repairs

- Wood
- Concrete
- Concrete Pipes
- Basement Walls
- Concrete Blocks and Masonry
- Below-Grade Walls
- Insulated Concrete Forms

Do It Yourself in These Easy Steps All specifications are suggestion only

1. Clean & Prepare the Surface

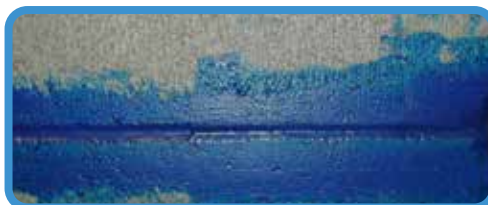
Read all instructions on the label before beginning. Do not use soaps or detergents prior to cleaning surface. Remove any loose materials to the coating application sight. A shop vacuum or wire brush may be useful in removing loose dirt/debris in cracks and crevices. Clean all surfaces to promote adhesion/bonding of the coating. Remove any detergents, oils, loose efflorescence, moss, mold or mildew from the surface to be coated.

Always run a test patch first in an inconspicuous area to ensure that proper adhesion and drying occurs with the product. Do not proceed unless you are completely satisfied. Be sure that surfaces are clean and dry before applying the coating.



2. Application

Ames® Blue Max® Trowel Grade may be applied with a Trowel, Putty or Tape Knife, for filling in cracks, crevices, or voids more than 1/8" wide. Cracks and crevices over 1/2" wide may need multiple thinner coats depending on the application. Fill the void as completely as possible, which is necessary to give strength back to the surface being re-bonded.



Ames® Blue Max® Products need to be top coated in applications with direct sun contact to protect from UV degradation. Applications below ground, such as ICF (insulated concrete forms), foundations, and water tanks/cisterns prior to backfilling do not need to be top coated. Top coating may be performed once the Ames® Blue Max® Trowel Grade is cured.

3. Seam Tape:

Surfaces with joints, cracks or where two unlike surfaces come together may require Ames® Peel & Stick™ Seam Tape (2"x50', 4"x50', and 6"x50') to provide additional strength and reinforcement. (See Peel & Stick™ Seam Tape label for instructions.)



1. Peel off Backing



2. Line up with Seam



3. Press Firmly in Place



4. Ready to Coat

Weather & Drying Guidelines

Ames® Blue Max® is best applied between 50° to 90°F (10° to 30°C) on warm dry surfaces. Be sure humidity is under 50% and that the dew point and temperature have a good spread. Check the weather and remember the rules: Apply when the streets are dry, the sun is in the sky, and no inclement weather is forecasted for at least 48 hours.

Clean-Up, Storage, & Disposal

Clean tools and small spills with water. Store unused product in its original can, tightly sealed, and protected from freezing. Dispose of this product in accordance with local, state, and federal laws.



First Aid / Caution

Keep out of reach of children. If swallowed, do not induce vomiting. Give milk or water and seek medical attention immediately. In case of contact with eyes, flush thoroughly with water and call a doctor or poison control center. This product contains a unique combination of water-based acrylic copolymers. Call 911 for the Poison Control Center. Repeated or prolonged contact with skin may produce irritation or sensitivity. Use gloves.



For Warranty Information Visit
www.amesresearch.com/warranty

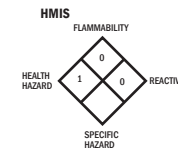
Warning: If you scrape, sand, or remove old paint, you may release lead dust. LEAD IS TOXIC. EXPOSURE TO LEAD DUST CAN CAUSE SERIOUS ILLNESS, SUCH AS BRAIN DAMAGE, ESPECIALLY IN CHILDREN. PREGNANT WOMEN SHOULD ALSO AVOID EXPOSURE. Wear a NIOSH-approved respirator to control lead exposure. Clean up carefully with a HEPA vacuum and a wet mop. Before you start, find out how to protect yourself and your family by contacting the National Lead Information Hotline at 1-800-424-LEAD or log on to www.epa.gov/lead.

CA Prop 65: This product may contain chemical(s) known to the state of California to cause cancer and/or birth defects or other reproductive harm.

Ames Research Laboratories Inc.
1891 16th St. SE Salem, OR 97302
Toll-Free: 1-888-345-0809
Phone: 1-503-588-3330
Fax: 1-503-364-2380
Email: productservices@amesresearch.com
Visit our website at www.amesresearch.com for more information.

Ames® Blue Max® Trowel Grade is a trademark of Ames Research Laboratories, Inc. Illustrations copyright © 2002-2018 by Ames Research Laboratories, Inc. All Illustrations and diagrams are property of Ames Research Laboratories, Inc. All Rights Reserved. 061518

Protect From Freezing
Store Above 50°F



Blue
BMX5TG

8 56955 00032 5