



8STREME

5201 / 5211 / 5310
User Manual



■ **5201**

For pools up to 18 ft round
Flat bottom floor cleaner



■ **5211**

For pools up to 24 ft round
Flat bottom or sloped bottom
floor cleaner



■ **5310**

For pools up to 18ft x 33ft or 28
ft round
Flat bottom or sloped bottom
floor cleaner

!!! Warning and Safety !!!

Follow instructions bellow and review your local pool safety regulations

- Keep the power supply away from pool edge by at least 6 ft
- Ensure your electrical outlets are properly grounded and have a Ground Fault Current Interrupter (GFCI) protected.
- Do not connect the power supply to an extension cord
- Keep the power supply out of water
- Do not run the robotic cleaner out of water
- Make sure the power supply is unplugged before any maintenance
- Do not operate with a damaged cord or power supply
- Do not operate if robotic cleaner is damaged
- **Do not operate with people swimming in the pool**
- **Remove the robotic cleaner from the swimming pool if not in use**
- For use in water with temperatures between 41-100°F
- Please empty and clean the filter basket after every use
- These robots do not clean steps.

For optimum performance, please ensure your pool is in the following conditions:

PH level: 7.0 – 8.0

Alkalinity: 80 – 160 ppm

Calcium Hardness: 150 – 400 ppm

If the robotic cleaner is not functioning properly or if it is damaged, contact 8streme (USA) at service@8streme.com or call (408) 823-1170

Congratulations on the purchase of your new Robotic Pool Cleaner by 8streme (USA)

This is a powerful autonomous cleaner which is easy to use and make pool maintenance simple and smooth. This cleaner comes with a large and efficient filter basket able to hold all kinds of debris. A TRY-ME fine filtration kit is included in each unit. Extra filter basket, fine filtration kit or other parts can be ordered through our store at Amazon or eBay.

Please check the packaging to insure all parts are ready for install. If any parts are missing or damaged, please contact 8streme (USA) at service@8streme.com or call (408) 823-1170

Getting Started



A. Wheel assembly:

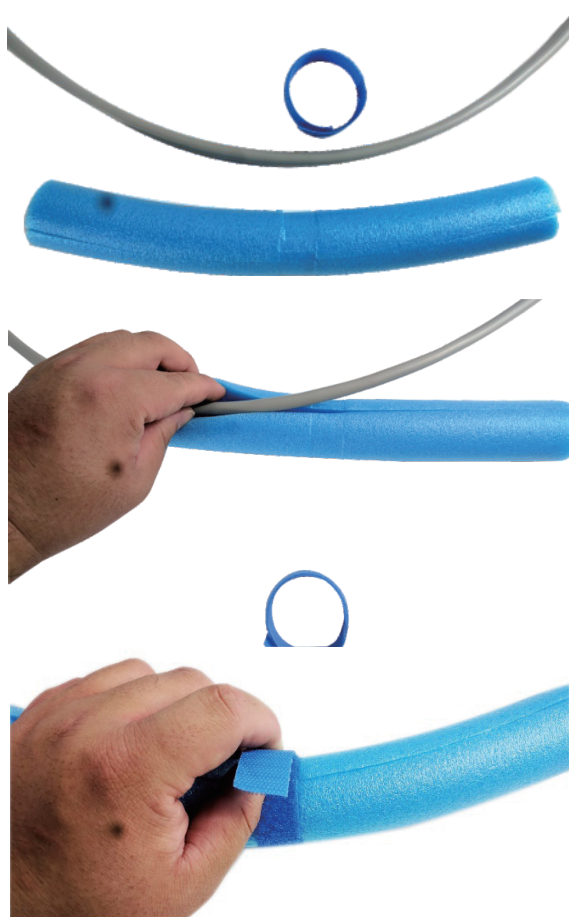
5201 & 5310: Wheels are pre-assembled
5211:

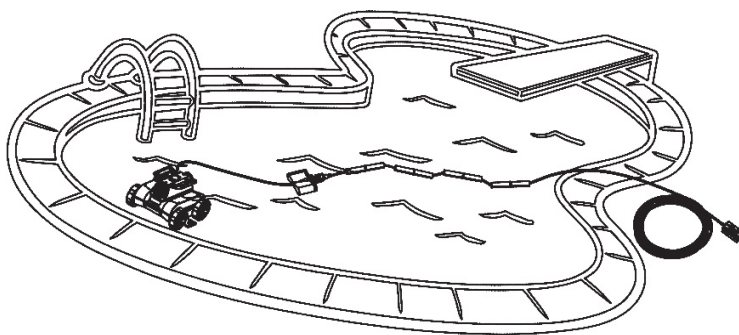
- Place the wheel onto the body.
- Drop the wheel axle pin to the hole at the middle of the wheel
- Push the axle pin in until you hear a click

B. Cord Floaters.

Cord floater is a foam tube which is split along the tube length. It helps the cord stay on top of water surface and therefore minimize chance of cord tangling.

- Untie the Velcro strap
- Spread out the foam tube and insert the cord into it.
- Wrap the Velcro strap along the middle of the foam tube.
- First foam tube location:
 - 5201 & 5211: Place the first foam tube at approximately 8 ft from the pool cleaner robot.
 - 5310: Place the first foam tube at approximately 4 ft from the swivel
- Add more foam tubes between the first foam tube and the power supply. Only the floating cord length that is inside your swimming pool needs such cord floater. Space each tube approximately 4 ft ~ 6 ft apart.





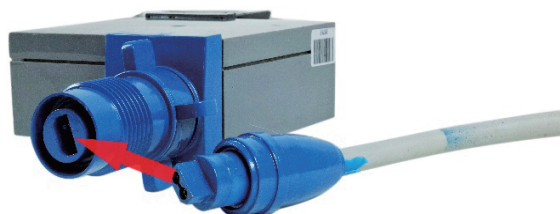
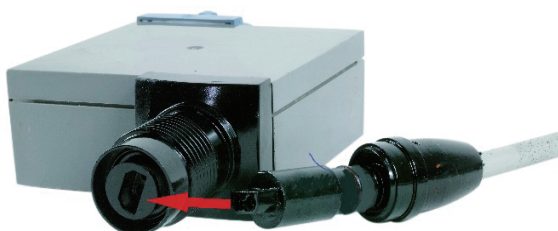
C. Side suction:

- a. 5201: Not included.
- b. 5211 & 5310: It can extend the suction beyond pool cleaner body width. Dirt vacuum can be done much faster. However, DO NOT use these side suction flaps if you have uneven pool bottom or pool liners with pleats
 - i. Turn the pool cleaner upside down with the bottom facing up.
 - ii. Place the side suction flap onto the suction channel as shown.
 - iii. Tighten up the screw.

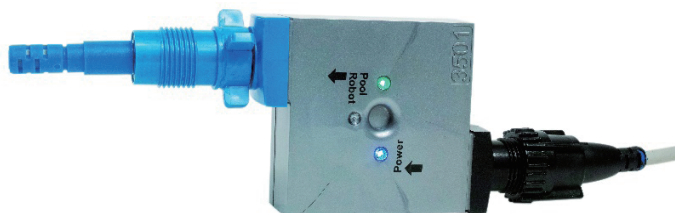


D. Swivel connection: 5310 only

- a. The square swivel has 2 connector ends. Colored blue and colored black respectively.
- b. Inside the box has 2 sections of floating cord. Short one attached to the pool cleaner robot and its end has blue colored connector. Long cord has black colored connectors. The other end of this long cord connects to power supply.

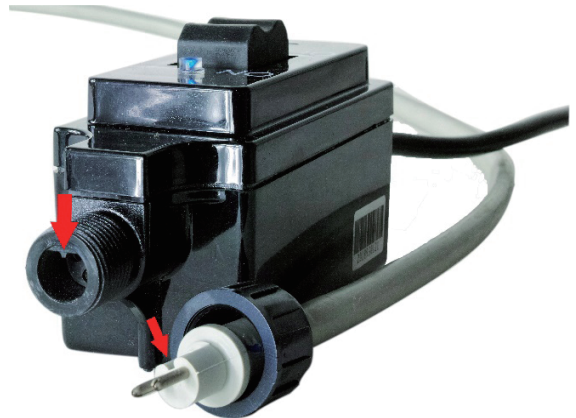


- c. Check the polarity and plug the blue connector to blue socket on the square swivel. Plug the black connector to black socket on the square swivel
- d. Hand tighten both blue and black connectors.
- e. The swivel is designed to float on pool water surface. It works well for pools up to 8ft deep. Contact customer service to order extension cord section if your pool is more than 8ft deep.

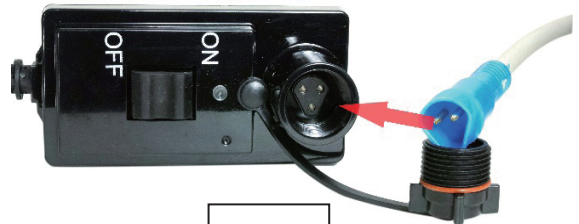


E. Power supply:

- a. 5201: Do not plug it to wall outlet until the pool cleaner robot is placed inside a swimming pool and fully immersed.
 - i. When it is ready to clean, plug it to a wall outlet and the machine will run for 90 minutes and then stop automatically.
 - ii. Unplug, wait 30 seconds and then plug in again to run another 90 minutes cleaning cycle.
- b. 5211 and 5310: Check and make sure the power supply is set to the OFF position before you connect it to anything.
 - i. Connect the end of the long floating cord to the power supply. The plug can only be connected to the power supply in one direction. Ensure that the plug is all the way in. Screw the black nut on the cord tightly onto the power supply.
 - ii. Place the robotic cleaner at a spot in the pool farthest from the power supply. From there you can determine how much floating cord you need. Keep any extra floating cord on the deck as explained in [section F](#).
 - iii. Make sure the robot is fully submerged before moving to next step. If needed, roll the cleaner left and right slightly until all air is released.



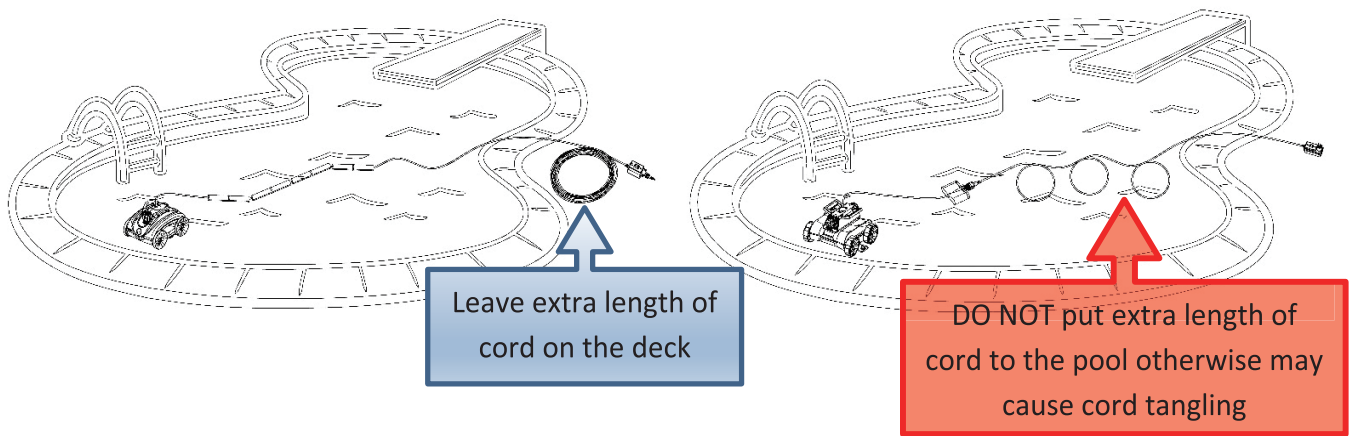
5211



5310



WARNING: Do not operate the robot cleaner if people are in the pool. Do not operate the robot cleaner out of water as it will damage the cleaner.



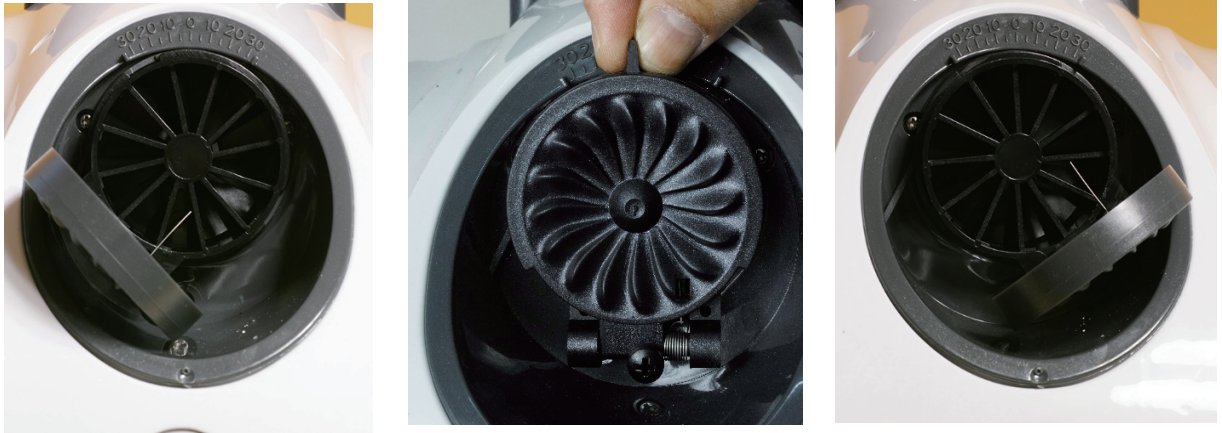
F. Pool cleaner placement

- Place just enough length of cord in the pool to reach the power supply. This is the optimum length of cord needed to clean your pool. Additional cord will lower the performance of the cleaner or even cause cord tangling.
- Turn on the power supply when it is ready to clean. Press down the toggle switch towards ON and the blue LED light turns on. The pool cleaner will run one cleaning cycle and then shut down automatically.
- Cleaning cycle:
 - 5211: 2 hours
 - 5310: 3 hours
- Press the toggle switch towards OFF to turn the power supply off.
- Wait for 30 seconds and then press the toggle switch towards ON again to run another cleaning cycle.
- When the cleaner is finished with its cleaning cycle or you no longer wish to use it, remove the cleaner from the swimming pool.

G. Storage

- To take your cleaner out of the pool, pull the floating cord until your cleaner is within arm's reach. **DO NOT** continue pulling the cord. Use the handle at the of the cleaner to take your cleaner out of the water.
- Slowly lift your cleaner and allow water inside your cleaner to drain. If needed, place your cleaner at the edge of the pool to continue draining water.
- Unplug the power supply and untangle the floating cord.
- Hose wash the entire cleaner inside out before you store the cleaner over the winter. Pay special attention to the impeller blade, mounting screws etc.

Adjusting Direction and Speed Control



1. Direction adjust:

To adjust the direction of the robot, rotate the outlet cover. Note that the direction the robot turns is the opposite of the where the indicator points.



2. Flap settings:

- Round shaped pools, it is recommended that the flaps at both ends do not share the same direction. For best performance have flap at the hinge end of the cleaner be straight and then the flap at the front of the cleaner rotated.
- Rectangular shaped pools, it is recommended that the flap at both ends do not share the same direction. For best performance have flap at the hinge end of the cleaner be straight and then the flap at the front of the cleaner rotated all the way to the side.
- These are recommended settings. Depending on the shape and size of your pool, you may have to play on direction and speed adjustments to reach the optimized setting for your pool



3. Speed control:

This pool cleaner works the best at medium speed in normal circumstances. If your pool has a lot of fine debris, it is better to slow down the speed which allow enough time for the pool cleaner to pick up fine dirt. Similar principle as you vacuum your own carpet at home. Flap should set at partially opened. On the other hand you need a bigger push if the filter bag is dirty and therefore flap should set at fully opened. Adjust the speed that best fits your need



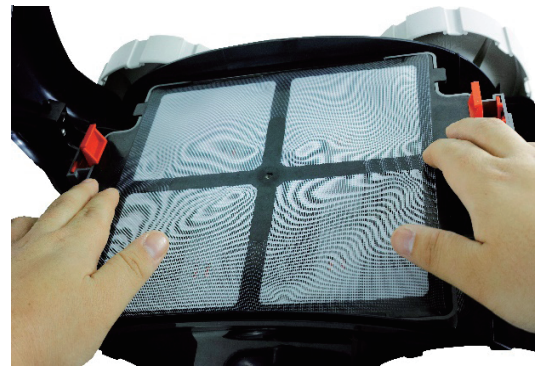
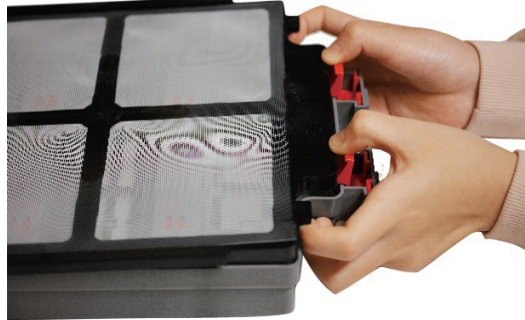
4. Flap adjust:

Speed is determined by how much flap at both ends can be opened.

- 5201: To adjust the speed of the robot, use a screw driver to turn the screw at the bottom of the cover. Screwing **out increases** the speed and screwing **in decreases** the speed
- 5211 & 5310: Slide the red tab towards bunny for higher speed or towards the turtle for lower speed

Cleaning the Filter Bag

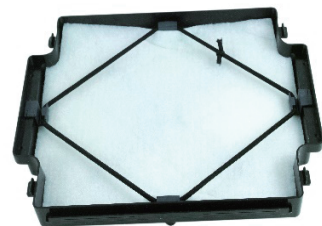
1. Open up the pool cleaner:
 - a) 5201 and 5211: Press in the button at the front of the cleaner and lift up the top shell. Continue to lift up the shell until you hear a "click" and the shell stays in place.
 - b) 5310: Pull the tab at the front of cleaner and lift up top shell
2. Lift up filter basket from the front until you hear a click.
3. Open up the debris basket. Dump out the debris inside the basket. Use a hose to spray water and clean the basket and filter screen.
4. Place and push the filter basket back into the robot until you hear a click. The basket is locked in place.



(Optional) Using and Cleaning Fine Filter Pad

1. To use your optional fine filter pad, take your debris basket out from the cleaner and open it.
2. Take the fine filter pad and place it under the elastic bands. Do not place the filter pad folded or compressed. It will decrease the effectiveness of the fine filtration.
3. To clean the fine filter pad, remove it from frame
4. Under running water, gently hand-wash the filter pad. Please note that it may not be possible to completely wash away all discoloration. Over-washing can damage the filter.

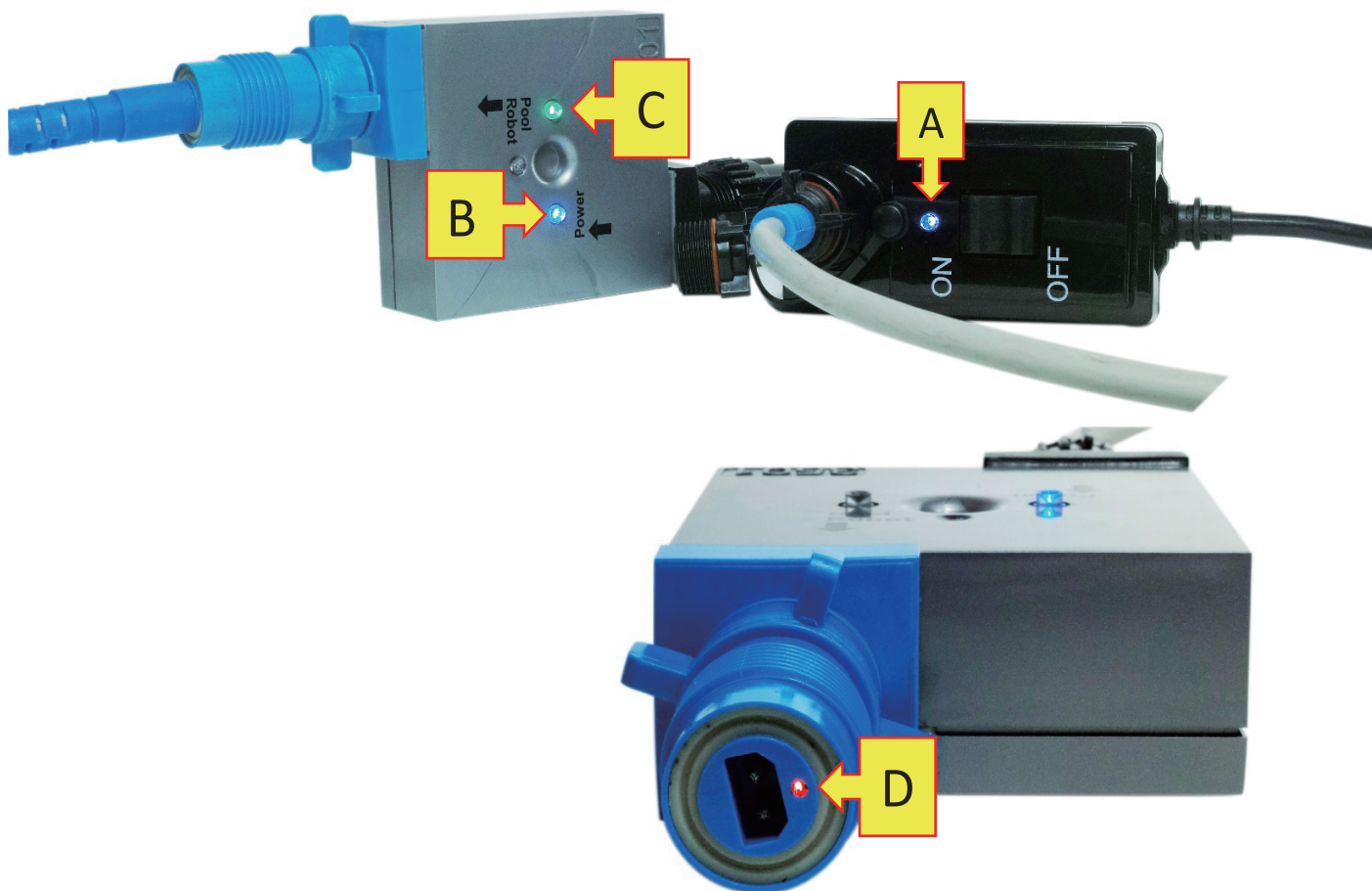
After a heavy cleaning or after a few cleaning cycles, your fine filter pad will lose effectiveness and will need to be replaced.



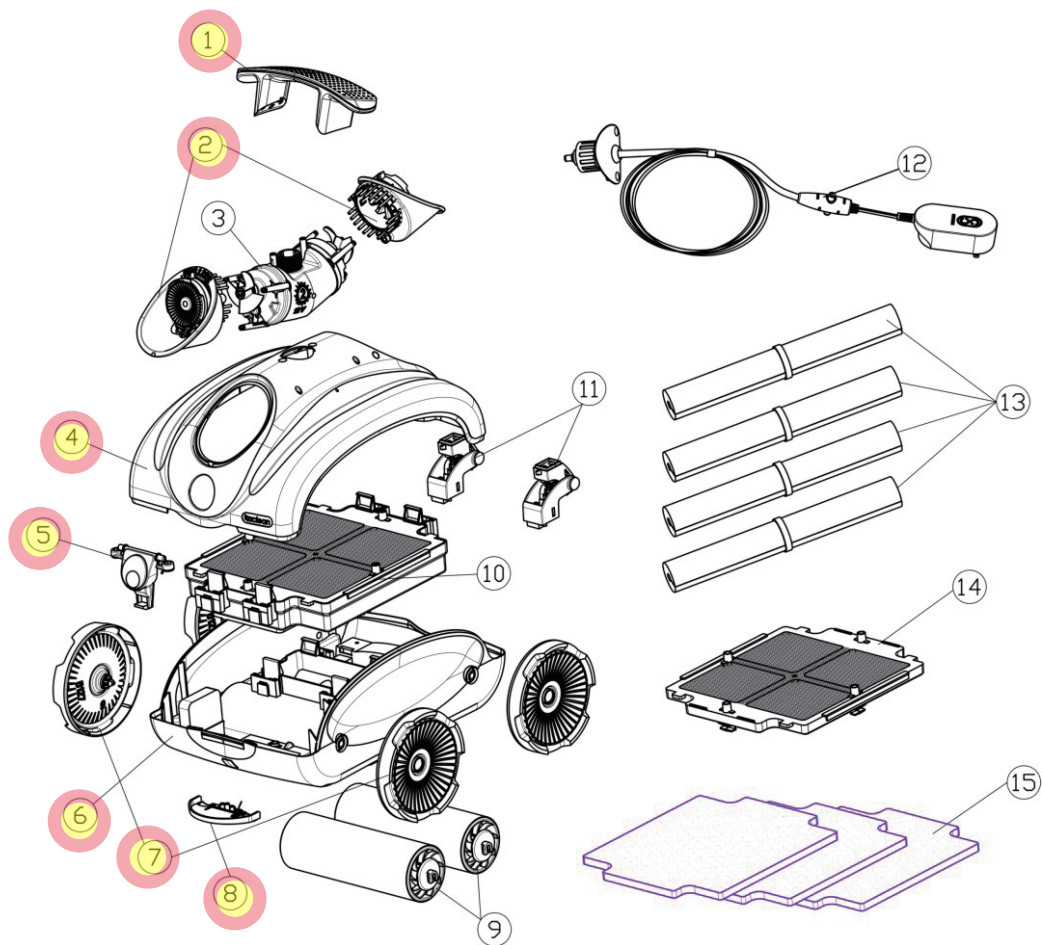
Troubleshooting

Symptom	Possible reason(s)	Solution(s)
Robot is not moving / Pump is not operating	<ul style="list-style-type: none"> • Electrical outlet/ GFCI tripped • Plug is not connected properly to outlet • No/not enough power is going to robot • An object is blocking robot's rollers or impeller 	<ul style="list-style-type: none"> • Check if electrical socket you are using is working by plugging in another know working electrical appliance into the socket and check to see if the GFCI triggered. Reset it if needed. • Unplug the power supply for 30 seconds. Plug back in power supply and press the power button • Check all connections from robot to power supply • Unplug power supply and take robot out of water. Open the cleaner to inspect the cleaner. Check that there no foreign object in the impeller. Check that there is no foreign object blocking the rollers • Contact 8streme at www.8streme.com
Robot is moving in only 1 direction	<ul style="list-style-type: none"> • An object is blocking robot's rollers or impeller 	<ul style="list-style-type: none"> • Check that the power supply plugged in • Unplug power supply and take robot out of water. Open the cleaner to inspect the cleaner. Check that there no foreign object in the impeller. Check that there is no foreign object blocking the rollers
<ul style="list-style-type: none"> • Robot does not pick up debris when running over it 	<ul style="list-style-type: none"> • Clogged/full bag • An object is stuck in impeller or grill • Robot is moving too fast 	<ul style="list-style-type: none"> • Clean the filter bag. Clean fine filter pad if used • Check if the filter bag frame is inserted properly. • Check that there is no foreign object in the impeller or lodged in the grill above the impeller • Adjust the speed setting to a lower level.

Indicator light and Diagnostics

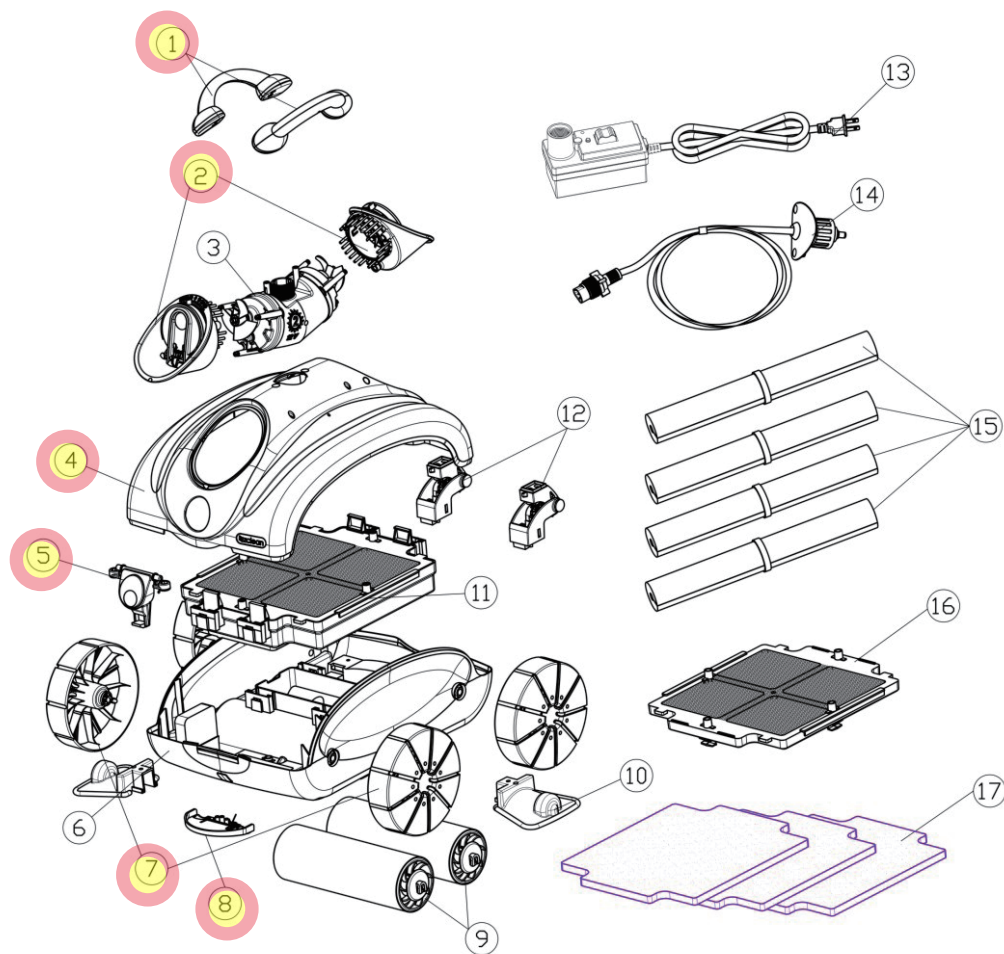


Indicator light	Diagnostic
A	When the power supply is plugged in to wall outlet and toggle switch is pressed towards ON, this blue LED should stay on indicating power supply functions normally. Otherwise check if the wall outlet has power or replace the power supply.
B	This blue LED will light up when floating cord between power supply and the <i>NO-TWIST</i> swivel is connected properly. Otherwise please check the connections or replace the floating cord.
C	This green LED only turned on when the pool robot is working. This green LED will not be lit after the pool robot finished its cleaning cycle or logic requires pool robot to stop briefly during cleaning. Otherwise replace the pool robot pump.
D	When the <i>NO-TWIST</i> swivel is connected to power supply, both power supply blue LED and swivel blue LED are on, there is a tiny red light at the blue connector end. This indicates the <i>NO-TWIST</i> swivel functions normally. Otherwise replace this swivel.



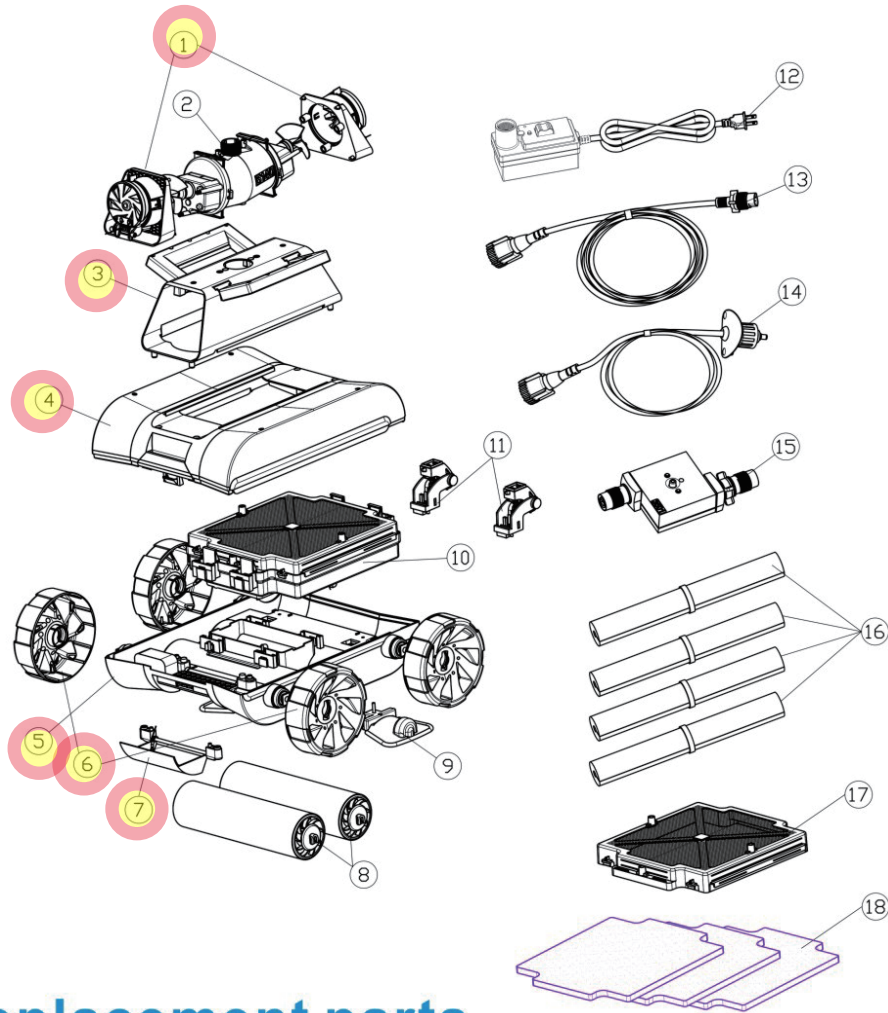
5201 replacement parts

Item	ItePart numberm	Part description
1	51320	Hydrofoil handle. Black color
2	51211	Pump outlet flap assembly. Black color
3	51060	Pump motor.
4	51300	Top shell. White color
5	51350	Latch lock
6	51310	Bottom chassis. White color
7	51270	Side wheels. 4pcs as a set
8	51340	Quick drain flap. White color
9	51050	Roller tubes. 2pcs as a set
10	51000	Complete filter basket
11	81000	Door hinge set
12	30230	Power supply complete with 6ft wire + 20ft floating cord
13	51021	Cord floaters. 4pcs as a set
14	51001	Filter screen
15	51380	(Optional) 3 pcs set fine filtration pad



5211 replacement parts

Item	ItePart number	Part description
1	51333	Curved handle set. L & R. Grass green
2	51242	Pump outlet flap assembly. Grass green
3	51070	Pump motor
4	51302	Top shell. Black color
5	51352	Latch lock. Grass green
6	51313	Bottom chassis. Black color
7	51141	Side wheels, Grey. 4pcs as a set
8	51342	Quick drain flap. Black
9	51050	Roller tubes. 2pcs as a set
10	51412	Side suction flap. 2pcs set. Black
11	51000	Debris basket
12	81000	Door hinge set
13	30100	Power supply.
14	33230	Floating cord 40 ft long Grey
15	51020	Cord floaters. 4pcs as a set
16	51001	Filter screen
17	51380	(Optional) 3 pcs set fine filtration pad



5310 replacement parts

Item	ItePart numberm	Part description
1	51431	Pump outlet flap assembly. Grass green
2	51400	Pump motor
3	51441	Pump enclosure
4	51451	Top shell. Black color
5	51461	Bottom chassis
6	51171	Side wheels, Grey. 4pcs as a set
7	51471	Quick drain flap. Black
8	51480	Roller tubes. 2pcs as a set
9	51412	Side suction flap. 2pcs set. Black
10	51010	Debris basket
11	81000	Door hinge
12	30210	Power supply
13	33291	43 ft power supply end floating cord
14	33232	10ft robot end floating cord
15	35010	No twist swivel
16	51021	Cord floaters. 4pcs as a set
17	51011	Filter screen
18	51380	(Optional) 3 pcs set fine filtration pad

ONE YEAR LIMITED WARRANTY

This robot is warranted to be free from defects in materials and workmanship, under normal use and non-commercial application, for a period of ONE year. To obtain service, contact 8streme at 408-823-1170 or email at service@8streme.com. Proof of purchase is required. This limited warranty is extended exclusively to the original purchaser and is non-transferable. The robot is intended for residential pool use and any commercial application voids all warranties.

Exclusion:

- Problems resulting from using electrical cords, tampering, accident, electrical surges, abuse, neglect, unauthorized or unqualified repairs, product alteration, fire flood, freeze damage, Act of Nature or Acts of God
- Damage or degrading of concrete, natural stone, wood or synthetic surfaces adjacent to the swimming pool or spa
- Problems or damages incurred due to improper installation and/or improper electrical supply
- The following are parts with normal wear and tear. They are excluded from the warranty:
 - **Filters, rollers wheels, tracks, belts, brushes and soft brushes**

Disclaimers: This limited warranty constitutes the entire warranty. No other warranties apply, expressed or implied. This limited warranty gives you specific legal rights, which vary from country to country. Under no circumstances shall we or authorized agent/installer be responsible for consequential, special or incidental damages(s) of any kind, including but not limited to personal injury, property damage, or damage to or loss of equipment. We or agent/installer is not liable for any other expenses that may be incurred during installation or servicing. Authored agents/installers may charge a trip fee for warrantable service work.

Some countries do not allow the exclusion of limitation of incidental or consequential damages. Listed exclusions and limitations may not apply to you.

Please contact 8streme at 408-823-1170 or Email at service@8streme.com for more information, useful tips, and troubleshooting assistance.