



www.simpli-home.com

Product Specification

Item No.: AXCMARN-BL Marana Bentwood Gaslift Bar Stool

Chair size: W-21.06" x D-19.69" x H-36.61-45.27"

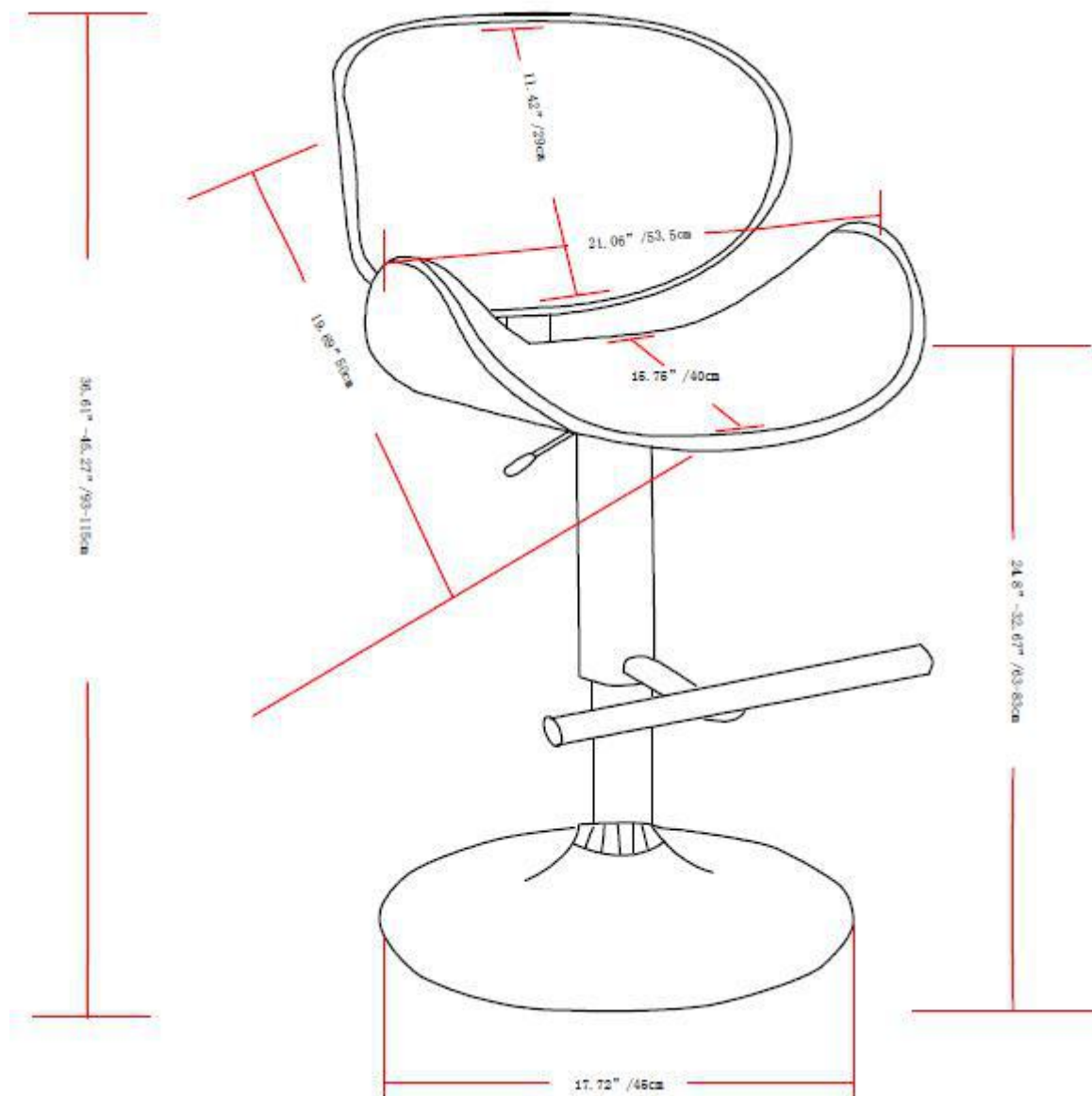
Date: June 11, 2017

Issued by: David Lu

Products Overview



I. General dimension of products:



REMARKS:

Please refer to technical drawings for more details of dimension.

All dimensions should follow exactly as Axxess's drawings.

II. Materials reference:

1. Fabric



- Black PU
- Country of Origin: China

2. Back and seat structure:

- Bentwood with walnut veneer
- Country of Origin: China

3. Foam

- Back cushion: D2450 foam
- Seat cushion: D2450 foam
- Standard: CA117
- Country of origin: China

4. Connector

- Chrome metal bracket
- Standard: BIFMA
- Country of origin: China

5. Footrest

- Chrome metal footrest
- Standard: BIFMA
- Country of origin: China

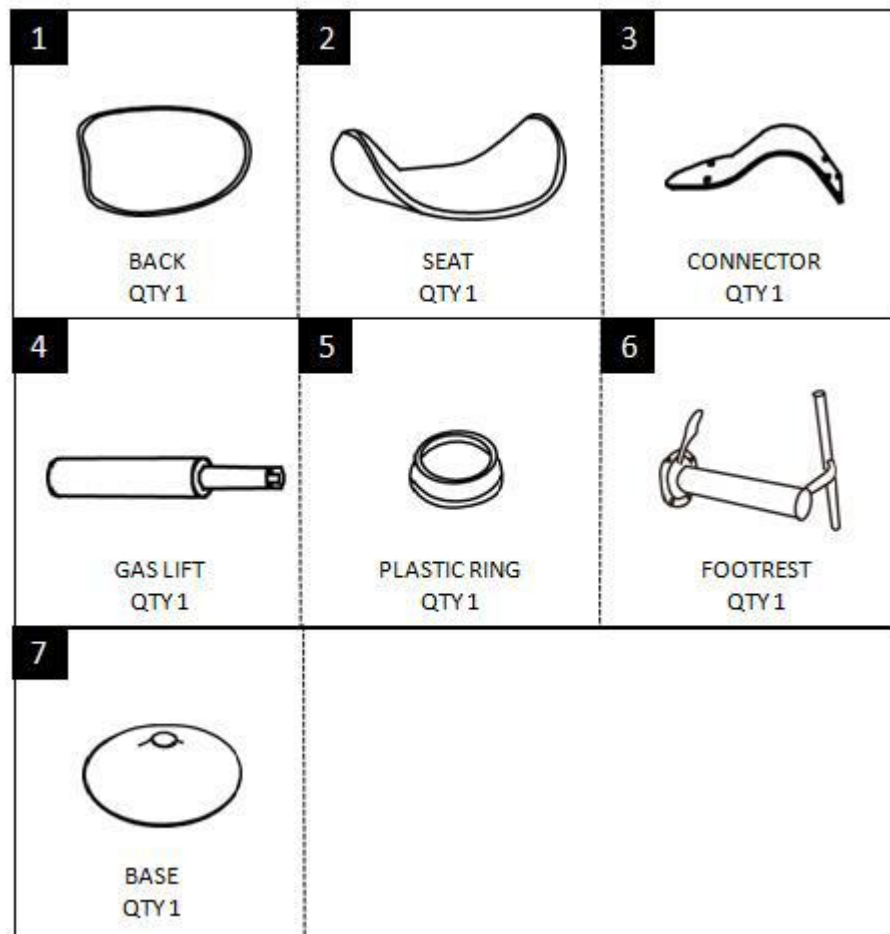
6. Gaslift

- Metal, 220mm stroke chrome gaslift, class 3
- Standard: BIFMA
- Country of origin: China

7. Base

- D450mm metal chrome speaker disc
- Standard: BIFMA
- Country of origin: China

COMPLETED PARTS:

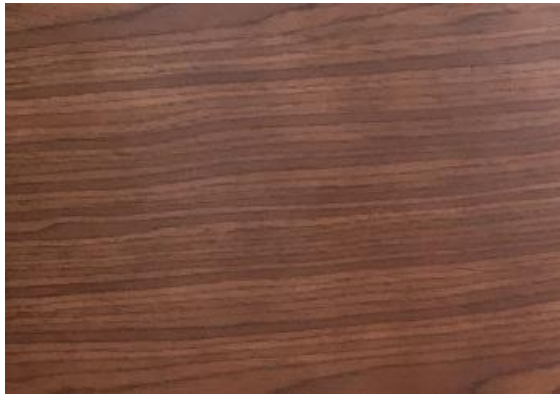


III. Construction/Specifications for wood part:

- Before mass production, product needs to pass all related tests – conform to US Consumer Product Safety Commission - at Approved Labs.
- All wood must be kiln dry before production and maintained at a humidity level between 8-12% during the manufacturing process.
- The variance of moisture between 2 lamellas cannot be over 2%.
- Width of lamination: should be between 40-80mm. The lamination should have the same width on a board.
- All products must be free from physical defects such as poor finish, patchy areas, contamination, pin holes or pitting.
- Dent, chipped mark, nick... are not allowed.

Finish / Color:

- Natural



IV. Hardware:

- All coatings on metal parts and hardware must comply to CPSIA regulation:
 - US Code of Federal Regulations Title 16 CFR 1303 for total Lead content in surface coating.
 - US Consumer Product Safety Improvement Act 2008 Title I Section 101 for total Lead content in surface coating.
- Country of origin: China
- Manufactured by:
 - Anji Shuntai Hardware co.ltd
- All hardware must be resistant to corrosion: Withstand 24 hours in 1% salt spray test.

V. Packaging:

Packaging must pass ISTA 3A testing by Approved Labs.

A. Hardware package:

Each type of hardware should be packed separately in a zip-bag;

Hardware Red Strings- used to identify the hardware inside the box –must be attached to the hardware bag at one end, and the other end must be attached to the outside of the box.



B. Carton box:

- Normal middle open carton design.
- Carton: Double-wall (5 Ply) Corrugated; Burst strength: Minimum of 275lb/in².



C. Packaging instruction:

- Product should be dried completely before packaging.
- Product should be cleaned completely before packaging. Any dust, stains... are not allowed on any surface.
- All parts should be tightly bundled in order to make sure they can not be moved during transit.
- All parts wrapped by foam sheet. Foam sheets must cover all surfaces to avoid damage of parts during transit.



AXCMARN-BL Marana Bentwood Gaslift Bar Stool



Closing carton box

- Reinforcing tape 70mm width must secure the 2 short open edges of box. Apply tape 70mm width along the open edge of carton (cover the reinforce tape). Do not apply the scotch tape across the open edge.
- High quality reinforcing tape and scotch tape must be used.
 - Brand name: Deyang Tape
 - Country of origin: China
- The tape should not come loose, and not cover the barcode number (image below for reference).



AXCMARN-BL Marana Bentwood Gaslift Bar Stool

- Packaging must follow packaging process which was approved by Axxess Technical and Quality Assurance Department.
- Notes :
 - Carton layout must be approved by Axxess Inc. before mass printing.
 - Marking should be in correct colors (red or black) as per instruction.
 - The red strings – used to identify the hardware inside the box – must be attached to hardware bag at one end, and the other end must be attached outside carton.
 - Axxess will not accept carton boxes with damages: torn, scratches... or with footprints on boxes.

VI. Sticker / Labels:

- Shipping marks: must be complied with Axxess's requirement. Must be approved by Axxess before mass printing.
- Sticker/Label:

<p>UNDER PENALTY OF LAW THIS TAG NOT TO BE REMOVED EXCEPT BY THE CONSUMER</p>	<p>NOTICE</p> <p>THIS ARTICLE MEETS THE FLAMMABILITY REQUIREMENTS OF CALIFORNIA BUREAU OF ELECTRONIC AND APPLIANCE REPAIR, HOME FURNISHINGS AND THERMAL INSULATION TECHNICAL BULLETIN 117- 2013. CARE SHOULD BE EXERCISED NEAR OPEN FLAME OR WITH BURNING CIGARETTES.</p>	<p>Not to be removed until delivered to the consumer</p> <p>Ne pas enlever avant la livraison au consommateur</p>
<p>ALL NEW MATERIAL CONSISTING OF POLYURETHANE FOAM PAD 100%</p>	<p>THE UPHOLSTERY MATERIALS IN THIS PRODUCT:</p> <p>___ CONTAIN ADDED FLAME RETARDANT CHEMICALS X CONTAIN NO ADDED FLAME RETARDANT CHEMICALS</p>	<p>This article contains NEW MATERIAL ONLY</p> <p>Cet article contient des MATÉRIAUX NEUFS SEULEMENT</p>
<p>REG NO. CA43804(CN)</p>	<p>THE STATE OF CALIFORNIA HAS UPDATED THE FLAMMABILITY STANDARD AND DETERMINED THAT THE FIRE SAFETY REQUIREMENTS FOR THIS PRODUCT CAN BE MET WITHOUT ADDING FLAME RETARDANT CHEMICALS. THE STATE HAS IDENTIFIED MANY FLAME RETARDANT CHEMICALS AS BEING KNOWN TO, OR STRONGLY SUSPECTED OF, ADVERSELY IMPACTING HUMAN HEALTH OR DEVELOPMENT.</p>	<p>This label is affixed in compliance with Provincial Law</p> <p>Cette étiquette est apposée conformément à la loi de la province</p>
<p>CERTIFICATION IS MADE BY THE MANUFACTURER THAT THE MATERIALS IN THIS ARTICLE ARE DESCRIBED IN ACCORDANCE WITH LAW.</p>		<p>Made by Fabriqué par Reg. No. QC-008939 No de Permis</p>
<p>MANUFACTURED BY : ANJI JUYUAN FURNITURE CO.,LTD ADD:XIAOFENG BAMBOO INDUSTRIAL ZONE,ANJI COUNTY HUZHOU CITY,313301 ZHEJIANG CHINA</p>		<p>Content Contenu Polyurethane Foam Mousse de polyuréthane</p>
<p>DATE OF DELIVERY : 05/25/2017 MADE IN CHINA</p>		<p>Exigence fédérale / Federal Requirement</p> <p>Tissu extérieur / Outer Covering</p> <p>Avant / Top: 100% Polyuréthane / 100% Polyurethane</p> <p>Arrière / Backing : 80% Polyester 20% Coton / 80% Polyester 20% Cotton</p>

VII. Assembly Instruction:

Please see Assembly instruction sheet enclosed at the end of this document.

VIII. Product pictures and detail structure:



AXCMARN-BL Marana Bentwood Gaslift Bar Stool

