



Project:  Date:

Prepared by:

Comments:



**FEATURES**

- 5 Year Warranty
- Direct Replacement for 2-lamp T8 (4-ft) or Tandem 4-lamp T8 (8-ft) strip
- Energy Savings of up to 30%
- Lumen Maintenance over 70% @ 50,000+ Hours
- Built to last with durable steel construction and a baked enamel finish
- No UV/IR Radiation, No Toxic Mercury
- Dimming 0-10V
- Die Formed of 24 Gauge Post Painted Steel
- Accommodates a fixture-mounted sensor for added energy savings and convenience
- Can be mounted in continuous row

**APPLICATIONS**

- Retail Store Lighting
- Task Lighting
- Covered Parking
- Big Box Stores
- Garage
- Utility room

**SPECIFICATIONS**

<b>Product</b>	ST4N48DMD50
<b>Wattage</b>	43W
<b>Lumens</b>	5069
<b>Efficacy</b>	119 lm/W
<b>Length</b>	48"

**Common Specifications**

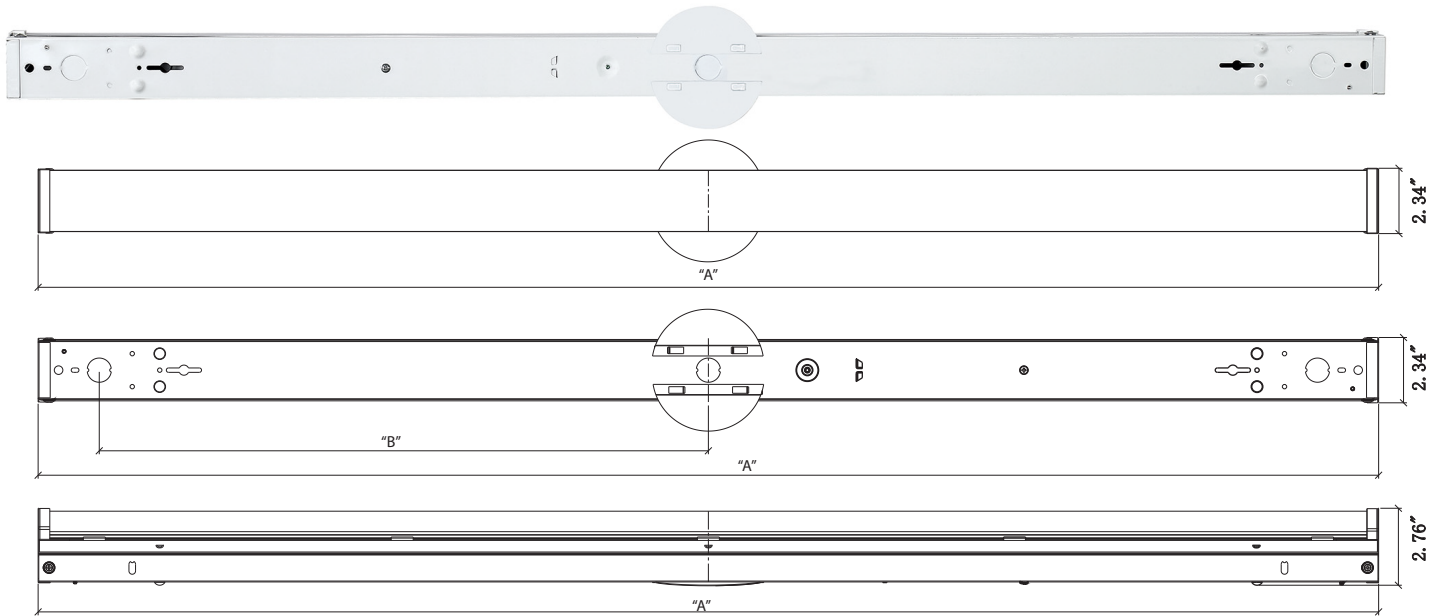
<b>Kelvin Temperature (CCT):</b> 5000K	<b>Power Factor:</b> 0.99
<b>Dimmable:</b> Yes- 0-10V	<b>THD:</b> <20%
<b>Input Voltage:</b> AC 120~277V	<b>Beam Angle:</b> 120° deg.
<b>Max. Ambient Temperature:</b> 113°F	<b>Lens:</b> White plastic
<b>Min. Ambient Temperature:</b> 0°F	<b>Product Width:</b> 2.3"
<b>CRI:</b> 82	<b>Product Height:</b> 2.75"

**CERTIFICATIONS**

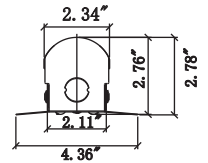
- cUL Listed- Damp Location
- DLC listed for Rebate and Tax Incentive in certain areas



Project:  Date:   
 Prepared by:   
 Comments:



Dimension	4-Ft	8-Ft
"A"	48"	96"
"B"	21.81"	45.79"



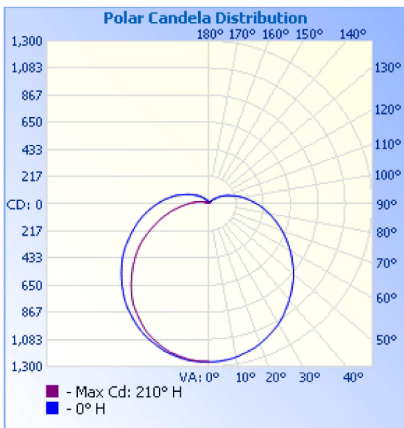
PHOTOMETRICS

Luminaire Photometric Report

**Filename:** ST4N48DMD:0  
**Manufacturer:** Cordelia Lighting Inc  
**Luminaire:** ST4N48DMD:0  
**Lamp Output:** Total luminaire Lumens: 4921.7  
**Max Candela:** 1,266.2 at Horizontal: 210°, Vertical: 5°  
**Input Wattage:** 42  
**Luminous Opening:** Point  
 Test: 4789420300-2  
**Test Date:** 25/3/2020  
**Test Lab:** UL Verification Services (Guangzhou) Co., Ltd.  
**Photometry:** Type C  
**CIE Class:** Semi-Direct  
**Cutoff Class:** Noncutoff  
**Nema Type:** 7 X 7

Zonal Lumen Summary

Zone	Lumens	% Luminaire
0-30	995.6	20.2%
0-40	1,648.6	33.5%
0-60	3,022.1	61.4%
60-90	1,358.8	27.6%
70-100	990.8	20.1%
90-120	441.3	9%
0-90	4,380.9	89%
90-180	540.9	11%
0-180	4,921.7	100%



**Illuminance at a Distance**

Center Beam fc	Beam Width	
1.7ft	437 fc	9.5 ft 5.2 ft
3.3ft	116 fc	18.4 ft 10.2 ft
5.0ft	50.5 fc	27.9 ft 15.4 ft
6.7ft	28.1 fc	37.4 ft 20.6 ft
8.3ft	18.3 fc	46.4 ft 25.6 ft
10.0ft	12.6 fc	55.9 ft 30.8 ft

■ Vert. Spread: 140.6°  
 ■ Horiz. Spread: 114.0°