



Project: Date:

Prepared by:

Comments:



FEATURES

- 5 Year Warranty
- Direct Replacement for 2-lamp T8 (4-ft) or Tandem 4-lamp T8 (8-ft) strip
- Energy Savings of up to 30%
- Lumen Maintenance over 70% @ 50,000+ Hours
- Built to last with durable steel construction and a baked enamel finish
- No UV/IR Radiation, No Toxic Mercury
- Dimming 0-10V
- Die Formed of 24 Gauge Post Painted Steel
- Accommodates a fixture-mounted sensor for added energy savings and convenience
- Can be mounted in continuous row

APPLICATIONS

- Retail Store Lighting
- Task Lighting
- Covered Parking
- Big Box Stores
- Garage
- Utility room

SPECIFICATIONS

Product	ST8N96DMD50
Wattage	85W
Lumens	10067
Efficacy	119 lm/W
Length	96"

Common Specifications

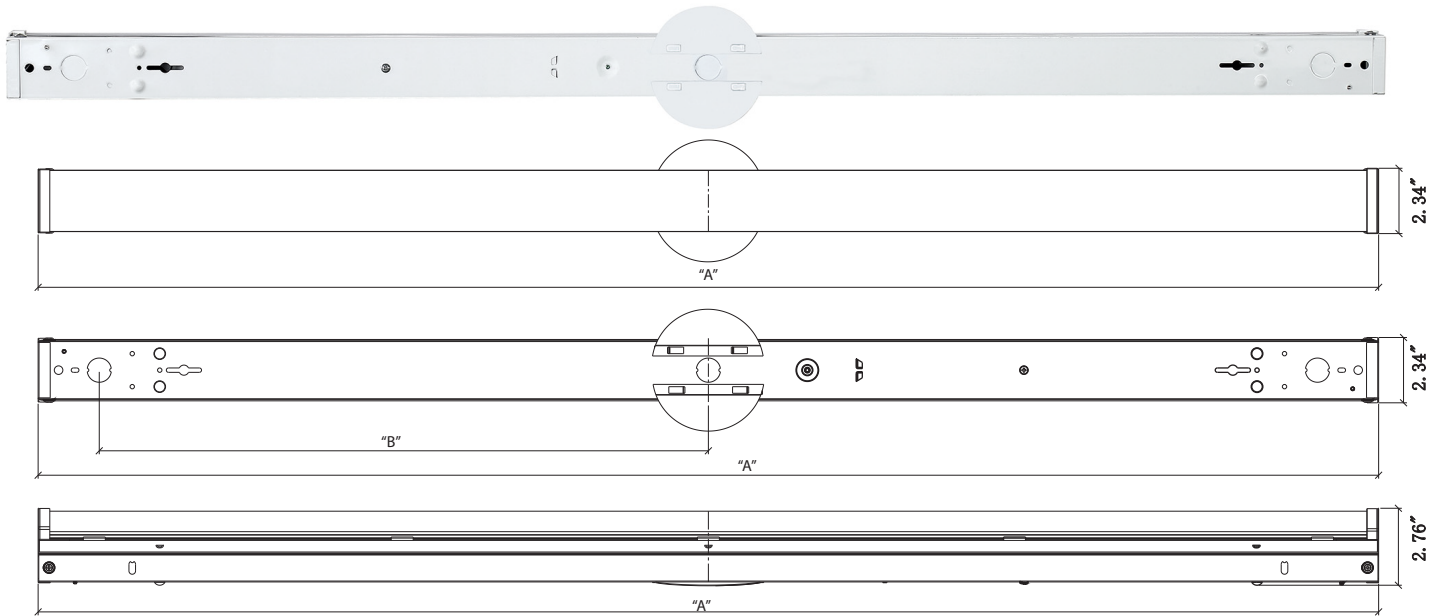
Kelvin Temperature (CCT): 5000K	Power Factor: 0.99
Dimmable: Yes- 0-10V	THD: <20%
Input Voltage: AC 120~277V	Beam Angle: 120° deg.
Max. Ambient Temperature: 113° F	Lens: White plastic
Min. Ambient Temperature: 0° F	Product Width: 2.3"
CRI: 82	Product Height: 2.75"

CERTIFICATIONS

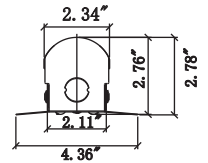
- cUL Listed- Damp Location
- DLC listed for Rebate and Tax Incentive in certain areas



Project: Date:
 Prepared by:
 Comments:



Dimension	4-Ft	8-Ft
"A"	48"	96"
"B"	21.81"	45.79"



PHOTOMETRICS

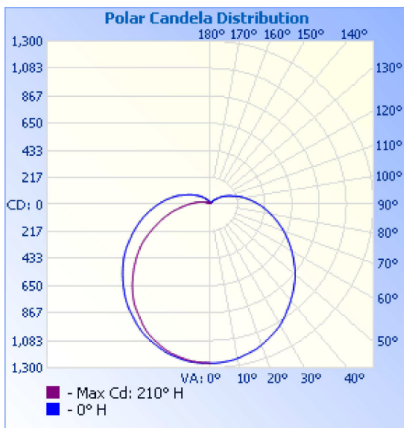
Luminaire Photometric Report

Filename: ST8N96DMD50
Manufacturer: Cordelia Lighting Inc
Luminaire: ST8N96DMD50
Lamp Output: Total luminaire Lumens: 4921.7
Max Candela: 1,266.2 at Horizontal: 210°, Vertical: 5°
Input Wattage: 42
Luminous Opening: Point
 Test: 4789420300-2
Test Date: 25/3/2020
Test Lab: UL Verification Services (Guangzhou) Co., Ltd.
Photometry : Type C
CIE Class: Semi-Direct
Cutoff Class: Noncutoff
Nema Type: 7 X 7

Zonal Lumen Summary

Zone	Lumens	% Luminaire
0-30	995.6	20.2%
0-40	1,648.6	33.5%
0-60	3,022.1	61.4%
60-90	1,358.8	27.6%
70-100	990.8	20.1%
90-120	441.3	9%
0-90	4,380.9	89%
90-180	540.9	11%
0-180	4,921.7	100%

Note: Need to put 4ft strip light next to each other to get the 8ft strip light reading



Distance	Illuminance at a Distance	
	Center Beam fc	Beam Width
1.7ft	437 fc	9.5 ft 5.2 ft
3.3ft	116 fc	18.4 ft 10.2 ft
5.0ft	50.5 fc	27.9 ft 15.4 ft
6.7ft	28.1 fc	37.4 ft 20.6 ft
8.3ft	18.3 fc	46.4 ft 25.6 ft
10.0ft	12.6 fc	55.9 ft 30.8 ft

■ Vert. Spread: 140.6°
 ■ Horiz. Spread: 114.0°