

# EASYPOPUP™ POP-UP DRAIN

**MATTE  
BLACK**  
PF0728-MB-BR

EasyPOPUP Universal Pop-Up Drain allows for easy install and removal of stopper without the messy disassembly. Threaded Cap/Flange design allows Easy to replace Upgrade Finishes.

## Need different finish?

Easy upgrade Trim Kits are available in other finishes.



## INSTRUCTIONS



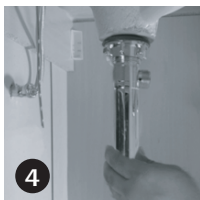
Remove drain flange from the pop-up drain body and place it in the drain hole of the sink

Use included gasket on the underside of drain flange or for a tighter fit of the drain flange to sink, discard gasket and apply suitable sealant to the underside of flange. Do not use plumber's putty on marble or plastic - it may discolor surface.



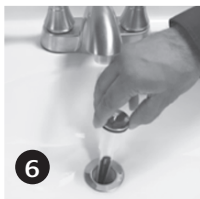
Assemble lift rod with linkage extension.

Thread pop-up body into the flange from under sink. Tighten locknut from underside with ball rod port pointing toward the back of sink.



Verify that ball rod gasket is seated in the ball rod port with large diameter facing towards the ball. Insert the ball rod in place and tighten the nut. Connect the ball rod to the linkage using the clip.

Orient the EasyPOPUP Stopper aligned with the ball rod. Push the EasyPOPUP stopper onto the ballrod until it touches the sink.



Keep Out of Reach of Children

**PF WATER WORKS**  
PLUMBING INNOVATION AND WATER CONSERVATION  
[www.pfwaterworks.com](http://www.pfwaterworks.com)  
[support@pfwaterworks.com](mailto:support@pfwaterworks.com)

Model # PF0728-MB-BR



8 14460 02385 7

Made in China

**WARNING:** Cancer & Reproductive Harm  
[www.P65Warnings.ca.gov](http://www.P65Warnings.ca.gov)