

TRUE TEMPER®

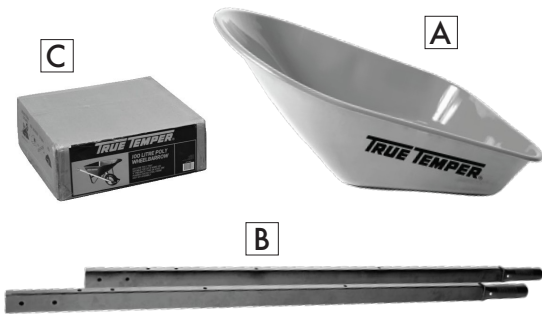
ASSEMBLY INSTRUCTIONS

100 LITRE STEEL WHEELBARROW

REQUIRED COMPONENTS

Ensure you have the following components before you begin to assemble:

- A. Steel Tray
- B. Handles X2
- C. Parts Box



Read all instructions prior to assembly
Work on a clean, flat surface

- Do not load the wheelbarrow with more than 330lbs/150kg
- Do not allow children to use the wheelbarrow unsupervised
- This wheelbarrow is not a toy
- Always distribute weight evenly over the surface of the tray
- Do not inflate tyres to more than 25PSI/ 172KPA
- Do not completely tighten nuts until the assembly is complete
- For easier assembly; it is recommended that two people assemble the wheelbarrow

Tools required for assembly:

- 14mm Socket & Ratchet
- 14mm Spanner
- Phillips Head Screwdriver

For customer enquiries contact:

AMES Australasia Pty Ltd.

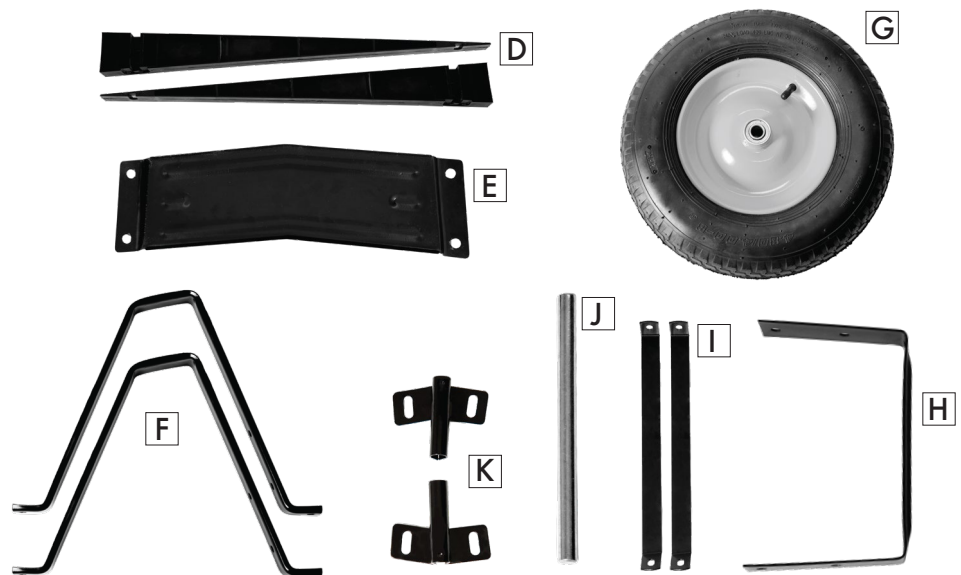
ABN: 89 169 427 061

Tel.: 1800 335 019

Email: customerservice@amesau.com

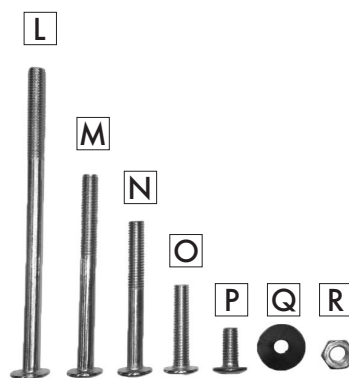
PARTS BOX CONTENTS

- D. Wedge 2 units
- E. Leg Brace 1 unit
- F. Legs 2 units
- G. Wheel 1 unit
- H. Nose Piece 1 unit
- I. Tray Supports 2 units
- J. Axle 1 unit
- K. Axle Brackets 2 units



HARDWARE COMPONENTS

- L. 140mm bolt 2 units
- M. 90mm bolt 2 unit
- N. 70mm bolt 4 units
- O. 40mm bolt 4 units
- P. 20mm bolt 4 units
- Q. Retainer Clip 4 units
- R. 14mm nut 18 units



STEP 1

Insert 2 x 140mm bolts (L) through the holes in the front of the tray (A); ensuring the bolt heads are positioned on the inside of the tray.

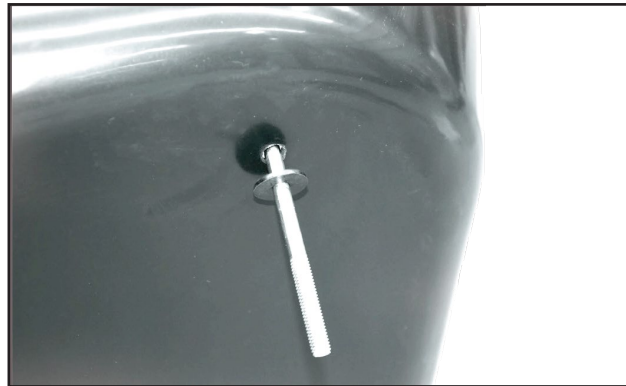
Repeat with 2 x 90mm bolts (M) through the holes at the rear of the tray, ensuring the bolt heads are positioned on the inside of the tray.



STEP 2

Slide the 4 x Retainer clips (Q) over the protruding bolts, pressing them hard against the tray.

This will keep the bolts in place when the tray is upside down.



STEP 3

Slide 2 x Plastic wedges (D) over the exposed bolts; ensuring the thickest end of the wedge is toward the front of the barrow.



STEP 4

Slide 2 x Handles (B) into place over the protruding bolts; ensuring the hand grips are toward the rear of the barrow.



STEP 5

Slide 2 x Legs (F) over the protruding bolts; ensuring holes in the legs are positioned towards the rear of the barrow.

Secure loosely with 4 x 14mm nuts (R).



STEP 6

Align the leg brace with the holes in the rear of the legs. Secure loosely with 4 x 20mm bolts (P) and 4 x 14mm nuts (R).



STEP 7

Align the nose piece (H) with the corresponding holes in the handles.

Thread 4 x 40mm bolts (O) through the holes in the nose piece and the handles, ensuring the bolt heads are on the outside of the handles. Secure loosely with 4 x 14mm nuts (R).



STEP 8

Insert 2 x 20mm bolts (P) through the holes in the front of the tray; ensuring the bolt heads are positioned on the inside of the tray.



STEP 9

Position 2 x tray supports (I) over the protruding bolts. Secure loosely with 2 x 20mm bolts (P) and 2 x 14mm nuts (R).



STEP 10

Insert the axle (J) through the centre of the wheel (G). Slide 2 x axle brackets (K) over each end of the protruding axle.



STEP 11

With the wheelbarrow upside down, position the wheel assembly over the corresponding holes in the handles. Align the remaining holes in the tray support with the corresponding holes in the handles.

Secure loosely with 4 x 70mm bolts (N) and 4 x 14mm nuts (R).



STEP 12

To complete assembly, tighten all the nuts securely using a 14mm socket and ratchet, 14mm spanner and a Phillips head screwdriver. **Do not over tighten any nuts as this could result in distortion of the product.**

Your wheelbarrow is now ready to use.



STEP 13

