

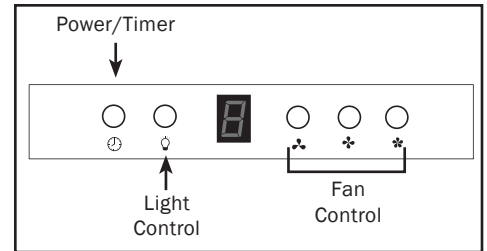


## OPERATION INSTRUCTIONS

### Fan Operation

**Fan Speeds:** Three speed settings give the customer total control of their fan at the push of a button.

**Timer:** This collection features a time-delay off feature to automatically shut the fan off after 1 to 9 minutes to conveniently clear the smoke and grease after cooking. To program the time-delay feature, press the button with the clock icon while the machine is on and then use the lowest speed setting button to toggle between 1 to 9 minutes.

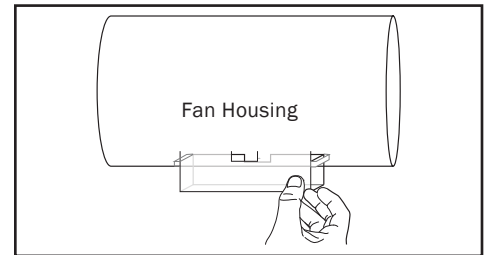


### Grease Disposal

**WARNING!** Do not remove filters or grease cups immediately after cooking or if grease is still hot.

Nonstick-coated fan blades will separate grease from the air and the grease will then be deposited into a grease cup for easy, convenient disposal. You will find the grease cup in a bag with the bracket and screws in the box. The grease cup can be used in conjunction with the mesh filters with certain models, while others can only use one or the other.

**Tip:** Soak all parts in soapy water if there is heavy grease.

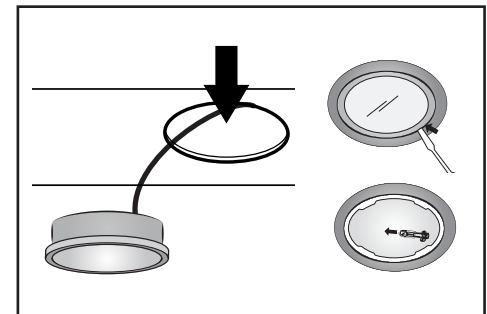


### Changing Light bulbs

**WARNING!** Ensure that all power leading to your range hood has been disconnected before changing bulbs. As well, ensure that lights have fully cooled before changing bulbs.

To change the light bulb, remove light case from the light socket. The light case can be accessed from the inside of the body of the machine.

1. Disconnect the connecting wires of the light socket from the motherboard wires.
2. Remove grease filters and push light case outward away from the machine.
3. Once the light case has been detached from the range hood, replace with a new one.



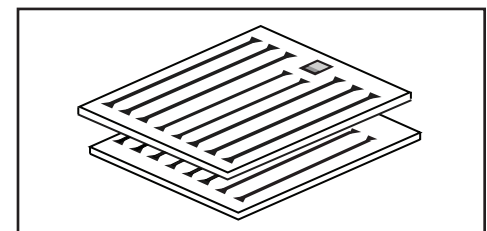
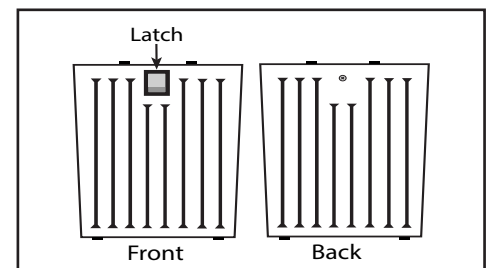
### Baffle Filters

**WARNING!** Ensure that all power leading to your range hood has been disconnected before removing filters and cleaning your fan.

**Removal:** To remove the baffle filters, locate the latch at the top of the filter and pull downwards away from the machine.

**Disassembly:** To disassemble the baffle filter, locate the screw on the back of the filter, unscrew and remove. Place screw in a safe place. Pull on latch to release the inner portion from outer portion, then separate the two halves of the filter. The two filters can then be placed in the bottom rack of the dishwasher or may be cleaned using stainless steel cleaner or dishwashing detergent and water.

**Reassembly:** To reassemble the baffle filter, first place the two pieces of the filter against each other (one inner piece, one outer piece). When placing the filter together, ensure that all tabs fit into the slots to keep both pieces of the filter attached. Once both halves of the baffle filters are securely in place, screw the screw back onto the filter.



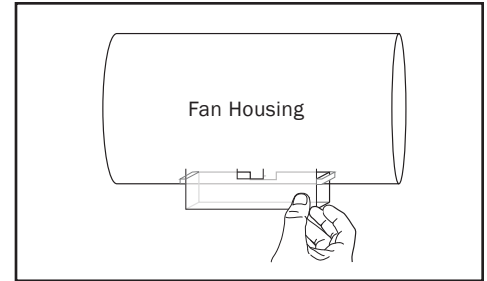
## MAINTENANCE

### Cleaning

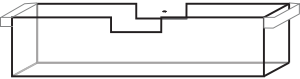
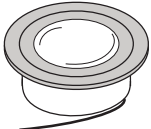
**Mesh Filters:** Removable filters can be cleaned by the dishwasher in the bottom rack, or by soaking in the sink.

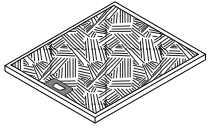
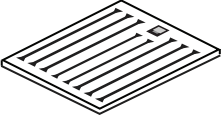
**Baffle Filters:** Disassemble the baffle filter into separate pieces by unscrewing the knob. Removable filters can be cleaned by the dishwasher, or by soaking in the sink.

**Exterior:** The exterior of the machine can be maintained by wiping the surface area. Use a stainless steel cleaner and a very gentle cloth for stainless steel machines.



## REPLACEABLE PARTS

NAME	QTY	DESCRIPTION	IMAGE
WM 01	1	Canopy Oil Collector	
WM 06	2	LED Light Socket Kit (Includes light, socket, connecting wire)	

NAME	QTY	DESCRIPTION	IMAGE
MFC 08	2	Mesh Filters for 24"	
MFC 05	2	Mesh Filters for 30"	
MFC 03	2	Mesh Filters for 36"	
BFC 05	2	Baffle Filters for 24"	
BFC 05	2	Baffle Filters for 30"	
BFC 03	2	Baffle Filters for 36"	

## FREQUENTLY ASKED QUESTIONS

### When do I need a Cyclone Range Hood?

Peoples' cooking habits vary, but getting rid of airborne contaminants and odours which linger in your cooking area is important for everyone. Whether it is steam from cooking soups, steaming vegetables, grease and oil from frying food, it is important for everyone to have efficient ventilation in their kitchen

### Can I install a Cyclone Range Hood myself?

Installing a Cyclone Range Hood is fairly straightforward, and we provide detailed installation instructions. We do not recommend range hood installation for novices to electrical or handy work.

### What is the minimum mounting height between the range top to hood bottom?

The minimum mounting height between the range top to hood bottom should be no less than 30". The maximum mount height should be no more than 36". The hood must be installed at the correct mounting height. Hoods mounted too low can result in heat damage, and hoods mounted too high will have impaired performance.

### How often do I clean my Cyclone Range Hood?

Cyclone recommends that our range hoods are cleaned at least once every month. However, cooking habits differ and cleaning should reflect the frequency and intensity of cooking.

### What is the difference between a mesh and a baffle filter?

Most Cyclone Range Hoods wall mount models have mesh filters which can be exchanged for baffle filters. Baffle filters are a durable alternative to mesh filters, capture more grease, and provide a pleasant aesthetic.

### Can I get a longer chimney flue to reach my high ceilings?

Cyclone canopy range hoods can accommodate to almost any ceiling height. Extended chimney pieces can be purchased separately for higher ceilings, and our chimneys can be custom cut to accommodate shorter ceiling heights.