

# Service Manual

## SERVICE PARTS & DIAGRAMS

**QUICKJACK**

# 7000TL - 110V

PRODUCT SKU  
**5175640**

DRAWING N°  
**5175356**

CATEGORY  
**QuickJack**

REV  
**Version A**

DATE  
**11.01.2022**



## **QUICKJACK™**

This guide is a troubleshooting reference used for maintaining and servicing your Bend Pak product. It provides comprehensive information on identifying serviceable parts and components and assists in troubleshooting problems and performing assembly /disassembly procedures.

### **BendPak, Inc. Corporate Office**

1645 Lemonwood Drive  
Santa Paula, CA 93060 USA  
Toll Free US/Canada: 1-800-253-2363  
Fax: 1-805-933-9160  
info@bendpak.com

### **Customer Service Desk / Warranty**

Customer Service Representatives  
Office Tel: 1-805-933-9970  
Toll Free US/Canada: 1-800-253-2363  
Fax: 1-805-933-9160  
customerservice@bendpak.com

### **Parts Orders**

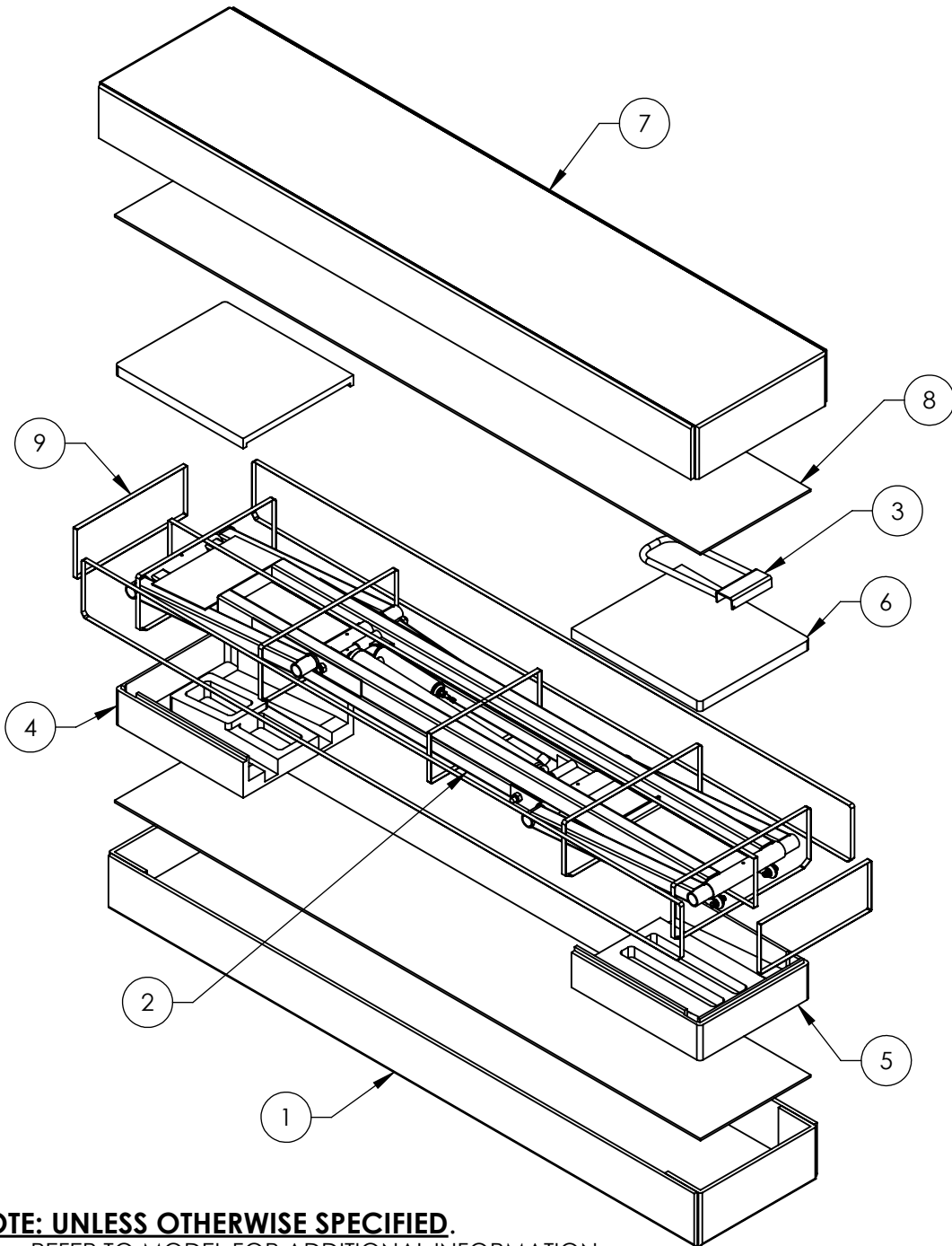
Customer Service Representatives  
Office Tel: 1-805-933-9970  
Toll Free US/Canada: 1-800-253-2363  
Fax: 1-805-933-9160  
parts@bendpak.com

### **Domestic Sales & Service**

USA Sales Representatives  
Office Tel: 1-805-933-9970  
Toll Free US/Canada: 1-800-253-2363  
Fax: 1-805-933-9160  
sales@bendpak.com

### **International Sales & Service**

Office Tel: 1-805-933-9970  
Exports Dept: 1-805-933-9970 EXT. 192  
Ext. Toll Free US/Canada: 1-800-253-2363  
Fax: 1-805-933-9160  
bpkexports@bendpak.com

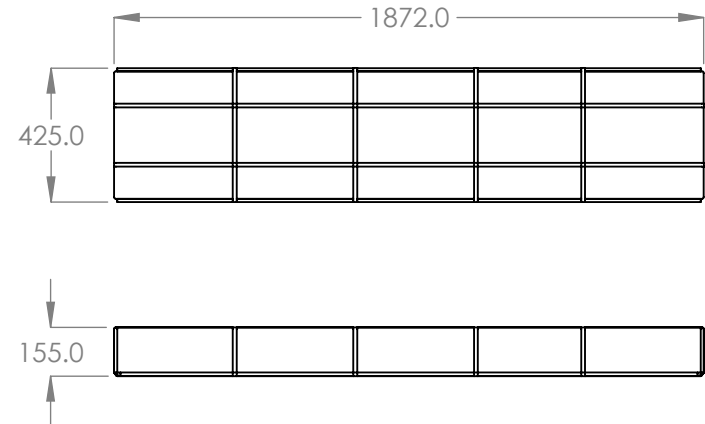


**NOTE: UNLESS OTHERWISE SPECIFIED.**

1. REFER TO MODEL FOR ADDITIONAL INFORMATION
2. SEE SHIPPING INSTRUCTIONS FOR FINAL PACKAGING
3. ASSEMBLE ITEMS AS SHOWN

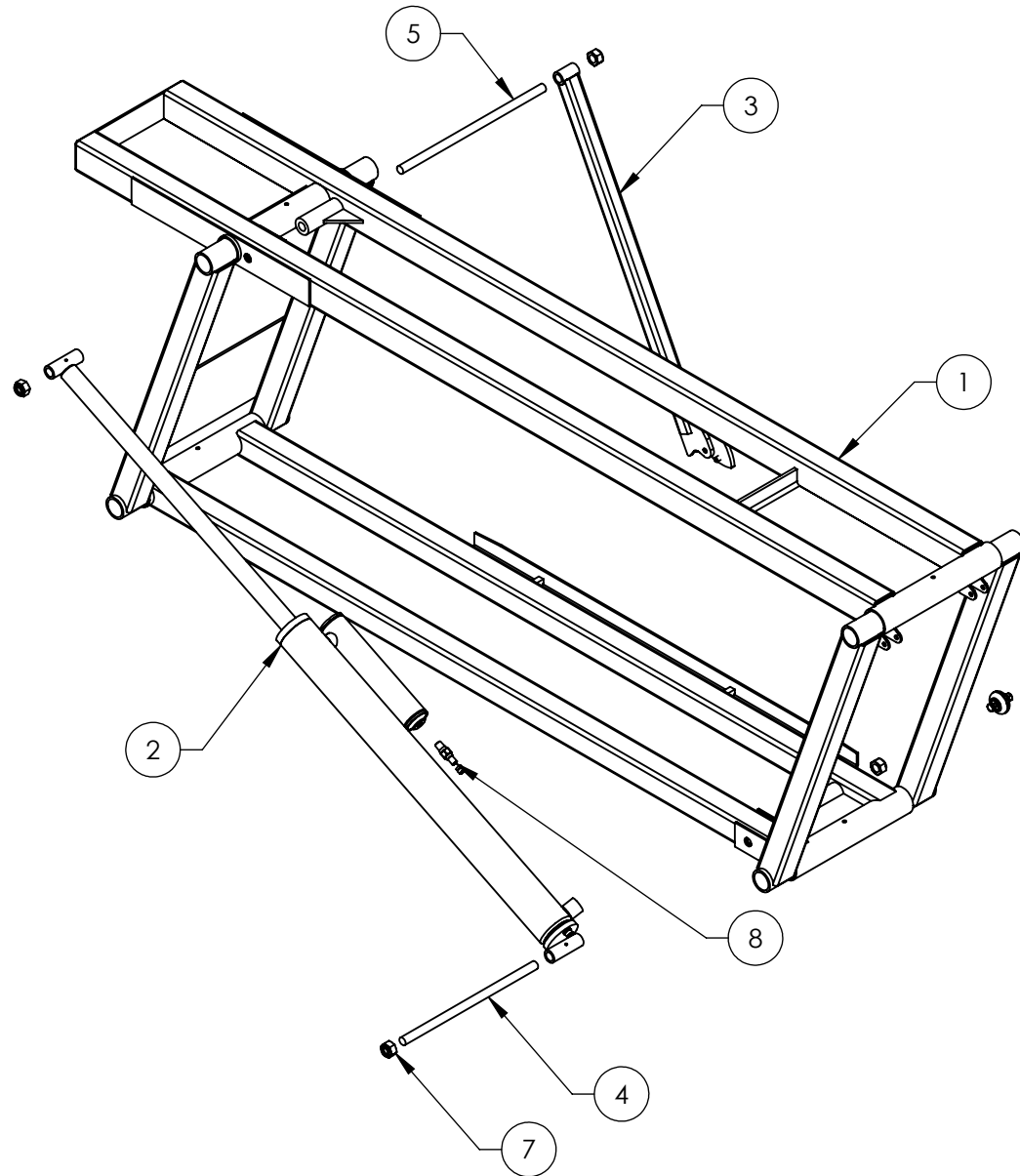
WHERE USED
7000TL

REVISION				
REV	DESCRIPTION	DATE	EDITED BY	ECO#
C	ADDED 5905756, UPDATED TITLE TO REFLECT MARKETING, UPDATED BOM REVISION	12/23/2020	CA	01237
D	UPDATED BOM REVISION	01/20/2021	TM	01265
OBSO	REPLACED WITH 5216102	11/11/2021	TM	01362
E	UNOBSOLETE FOR PRODUCTION, REPLACED LABELS WITH COLORS & GRAPHICS NOTE, UPDATED BOM REVISION	03/14/2022	CA	01402

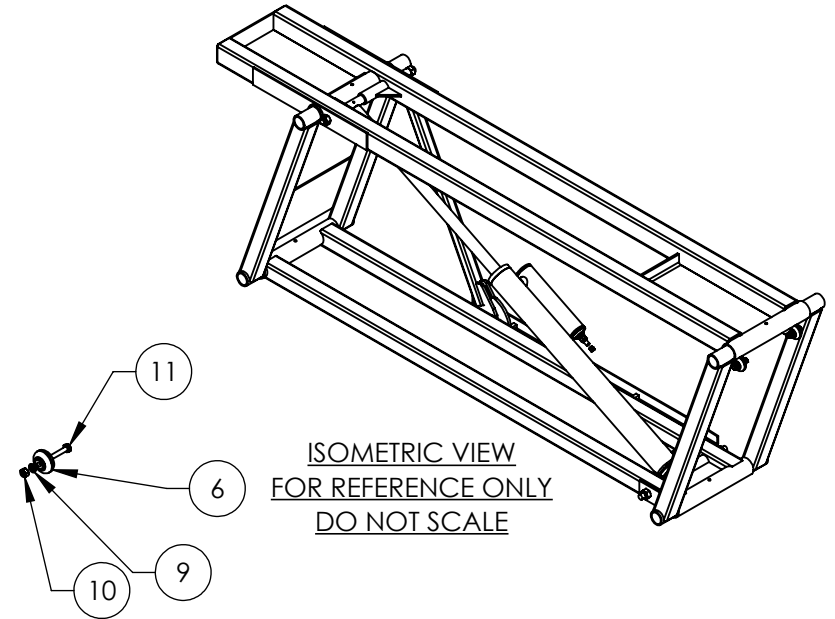


ITEM NO	PART NUMBER	DESCRIPTION	QTY	REV
1	5910009	7000TL PACKAGING BOTTOM BOX	1	C
2	5215921	7000TL FRAME ASSEMBLY, R.H.	1	E
3	5601108	QUICKJACK HANDLE WELDMENT	1	D
4	5930189	6000ELX/7000TL FRONT BOTTOM STYROFOAM PACKAGING	1	C
5	5930188	6000ELX/7000TL REAR BOTTOM STYROFOAM PACKAGING	1	B
6	5930191	6000ELX/7000TL TOP STYROFOAM PACKAGING	2	B
7	5910002	PACKAGING TOP BOX; 7000TL BOX 2-RIGHT, ENGLISH-FRENCH	1	C
8	5940059	PLYWOOD INSERT, 1832 x 345 x 6mm	2	B
9	5930575	.50" PLASTIC STRAPPING	10	-

DO NOT SCALE DRAWING	NAME	DATE	 1645 LEMONWOOD DR. SANTA PAULA, CA 93060
	DRAWN	TM 04/21/2020	
	CHECKED		
DIMENSIONS ARE IN MM	THIRD ANGLE PROJECTION		TITLE: 7000TL VER E PACKAGING, BOX 2 ENGLISH-FRENCH
 <small>PROPRIETARY AND CONFIDENTIAL          THE INFORMATION CONTAINED IN THIS DRAWING IS          THE SOLE PROPERTY OF BENDPAK INC. ANY          REPRODUCTION IN PART OR AS A WHOLE WITHOUT          THE WRITTEN PERMISSION OF BENDPAK INC. IS          PROHIBITED.</small>			SIZE DWG. NO. REV
	A 5215930 E		SCALE: 1:15 SHEET 1 OF 1



REVISION				
REV	DESCRIPTION	DATE	EDITED BY	ECO#
C	TOP LOCK WAS 533.1 NOW 527.1, LOWEST LOCK WAS 327.1 NOW 375.5, REMOVED MIDDLE LOCK, UPDATED TITLE TO REFLECT MARKETING, UPDATED BOM REVISIONS	12/16/2020	CA	01237
D	UPDATED BOM REVISION	01/25/2021	TM	01265
OBSO	REPLACED WITH 5216093	11/11/2021	TM	01362
E	UNOBSOLETE FOR PRODUCTION, UPDATED BOM REVISION	03/14/2022	CA	01402



ITEM NO	PART NUMBER	DESCRIPTION	QTY	REV
1	5601478	7000TL FRAME WELDMENT, R.H.	1	E
2	5502041	OFFSET CYLINDER ASSEMBLY Ø1.75 x 18.329in	1	C
3	5215918	QUICKJACK SAFETY BAR ASSEMBLY	1	B
4	5746670	DOUBLE THREADED ROD M12 x 1.75 x 254	1	G
5	5746142	DOUBLE THREADED ROD M12 x 1.75 x 274	1	D
6	5716192	QUICKJACK POLYURETHANE WHEEL	2	E
7	5535012	NUT M12 x 1.75 NL	4	-
8	5550055	FTG NPL -02 STM x -02 NPT	1	-
9	5545026	WASHER M6 x Ø12 SL	2	-
10	5535357	NUT M6 x 1.0 NL	2	-
11	5530027	HHB M6 x 1.0 x 35	2	-

WHERE USED  
7000TL

**NOTE: UNLESS OTHERWISE SPECIFIED.**

- REFER TO MODEL FOR ADDITIONAL INFORMATION
- SEE SHIPPING INSTRUCTIONS FOR FINAL PACKAGING
- ASSEMBLE ITEMS AS SHOWN

NEXT ASSEMBLY
5215930
5260613

DO NOT SCALE DRAWING

NAME	DATE
TM	04/17/2020
CHECKED	



1645 LEMONWOOD DR.  
SANTA PAULA, CA 93060

DIMENSIONS ARE IN MM

THIRD ANGLE PROJECTION



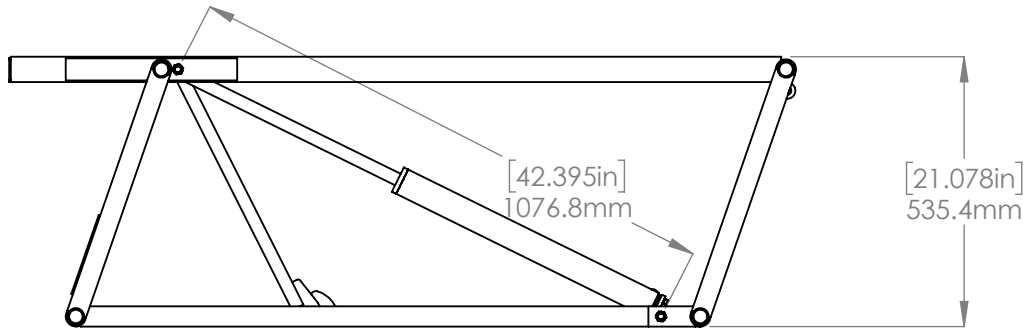
PROPRIETARY AND CONFIDENTIAL  
THE INFORMATION CONTAINED IN THIS DRAWING IS THE SOLE PROPERTY OF BENDPAK INC. ANY REPRODUCTION IN PART OR AS A WHOLE WITHOUT THE WRITTEN PERMISSION OF BENDPAK INC. IS PROHIBITED.

TITLE:  
7000TL FRAME ASSEMBLY, R.H.

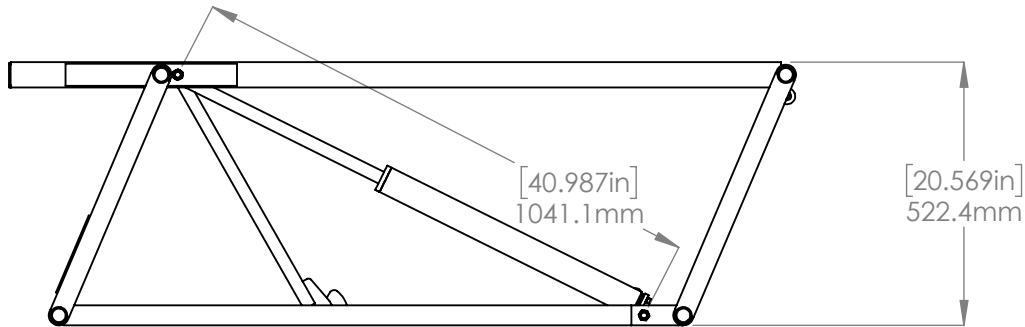
SIZE DWG. NO.	REV
A 5215921	E

SCALE: 1:10

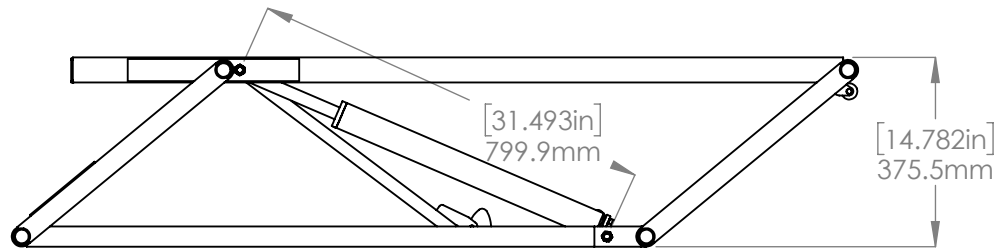
SHEET 1 OF 2



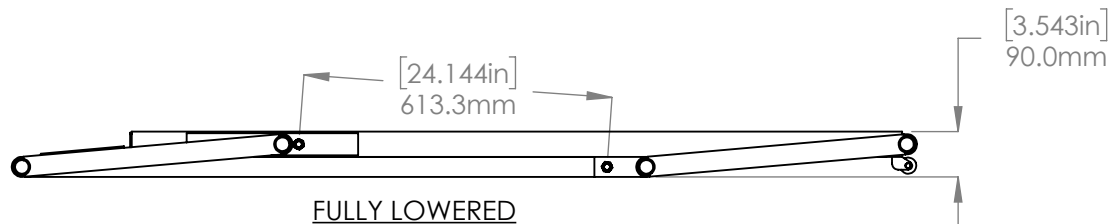
FULL RISE



TOP LOCK



LOWEST LOCK



FULLY LOWERED



1645 LEMONWOOD DR.  
SANTA PAULA, CA 93060

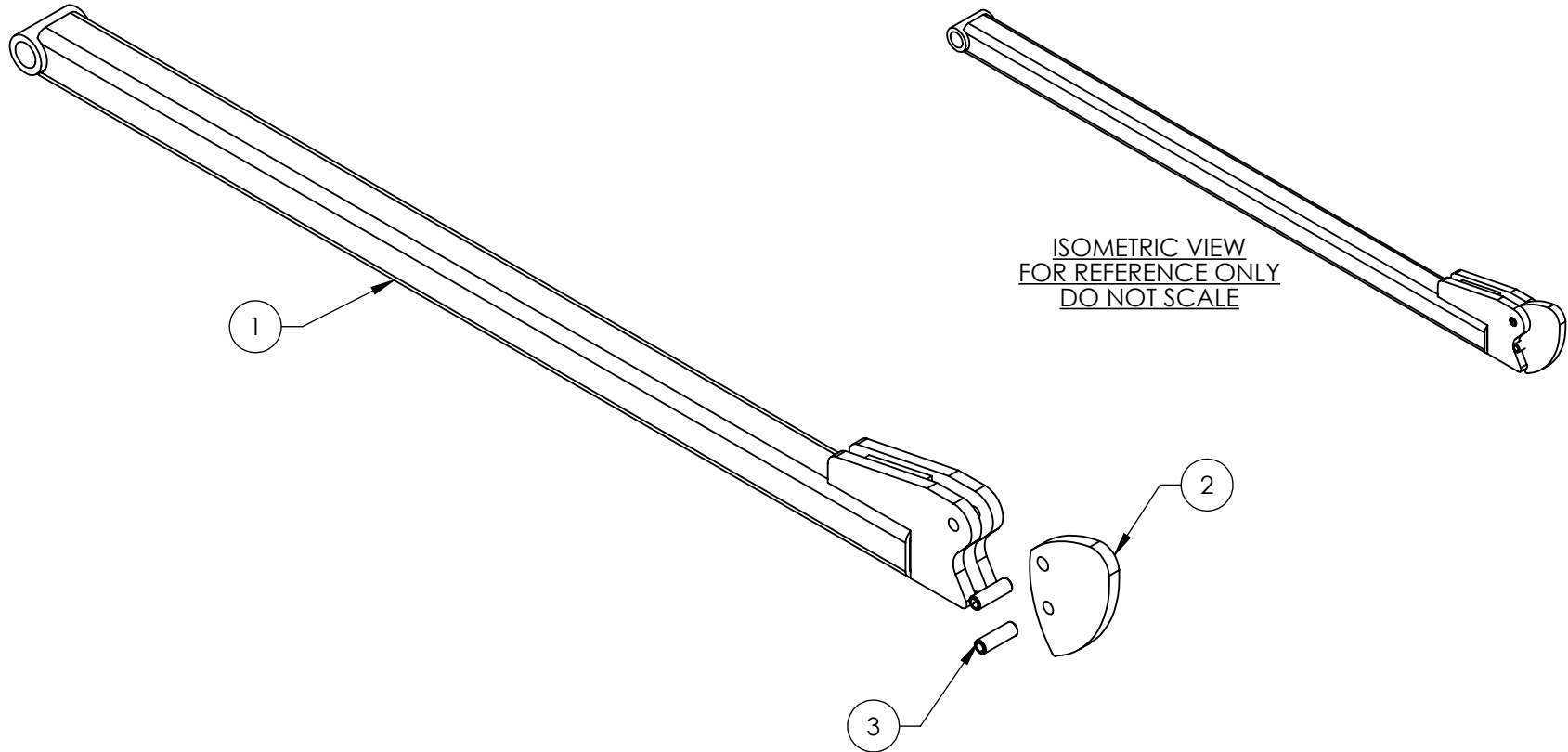
TITLE: 7000TL FRAME  
ASSEMBLY, R.H.

SIZE	DWG. NO.	REV
A	5215921	E

SCALE: 1:15

SHEET 2 OF 2

REVISION				
REV	DESCRIPTION	DATE	EDITED BY	ECO#
A	PRODUCTION RELEASE, DERIVED FROM 5215244	04/06/2020	TM	01159
B	UPDATED BOM REVISION	10/26/2020	TM	01222



WHERE USED
5000TL SERIES
6000ELX
7000TL SERIES

**NOTE: UNLESS OTHERWISE SPECIFIED.**

- REFER TO MODEL FOR ADDITIONAL INFORMATION
- ASSEMBLE ITEMS AS SHOWN

ITEM NO	PART NUMBER	DESCRIPTION	QTY	REV
1	5601476	QUICKJACK SAFETY ARM WELDMENT	1	B
2	5736887	QUICKJACK SAFETY LATCH	1	B
3	5505028	SPRING PIN M6 x 20	2	-

NEXT ASSEMBLY
5215919
5215920
5215921
5215922
5215923
5215924
5215925
5215926
5215937
5215950

DO NOT SCALE DRAWING

DIMENSIONS ARE IN MM

NAME: TM DATE: 04/06/2020

CHECKED: OR DATE: 11/06/2020

THIRD ANGLE PROJECTION

PROPRIETARY AND CONFIDENTIAL  
THE INFORMATION CONTAINED IN THIS DRAWING IS THE SOLE PROPERTY OF BENDPAK INC. ANY REPRODUCTION IN PART OR AS A WHOLE WITHOUT THE WRITTEN PERMISSION OF BENDPAK INC. IS PROHIBITED.

1645 LEMONWOOD DR.  
SANTA PAULA, CA 93060

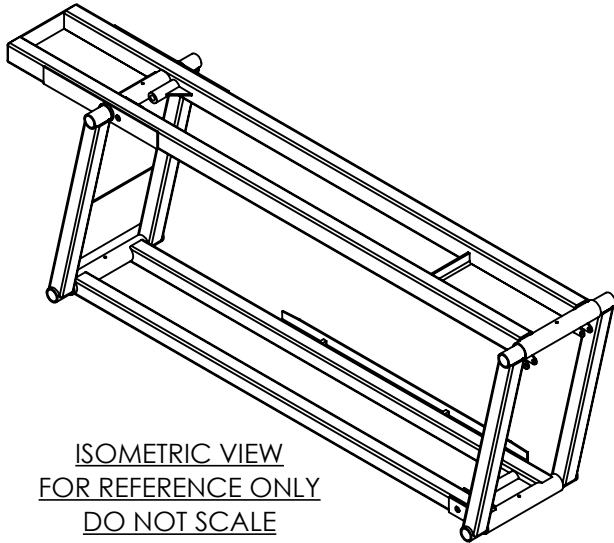
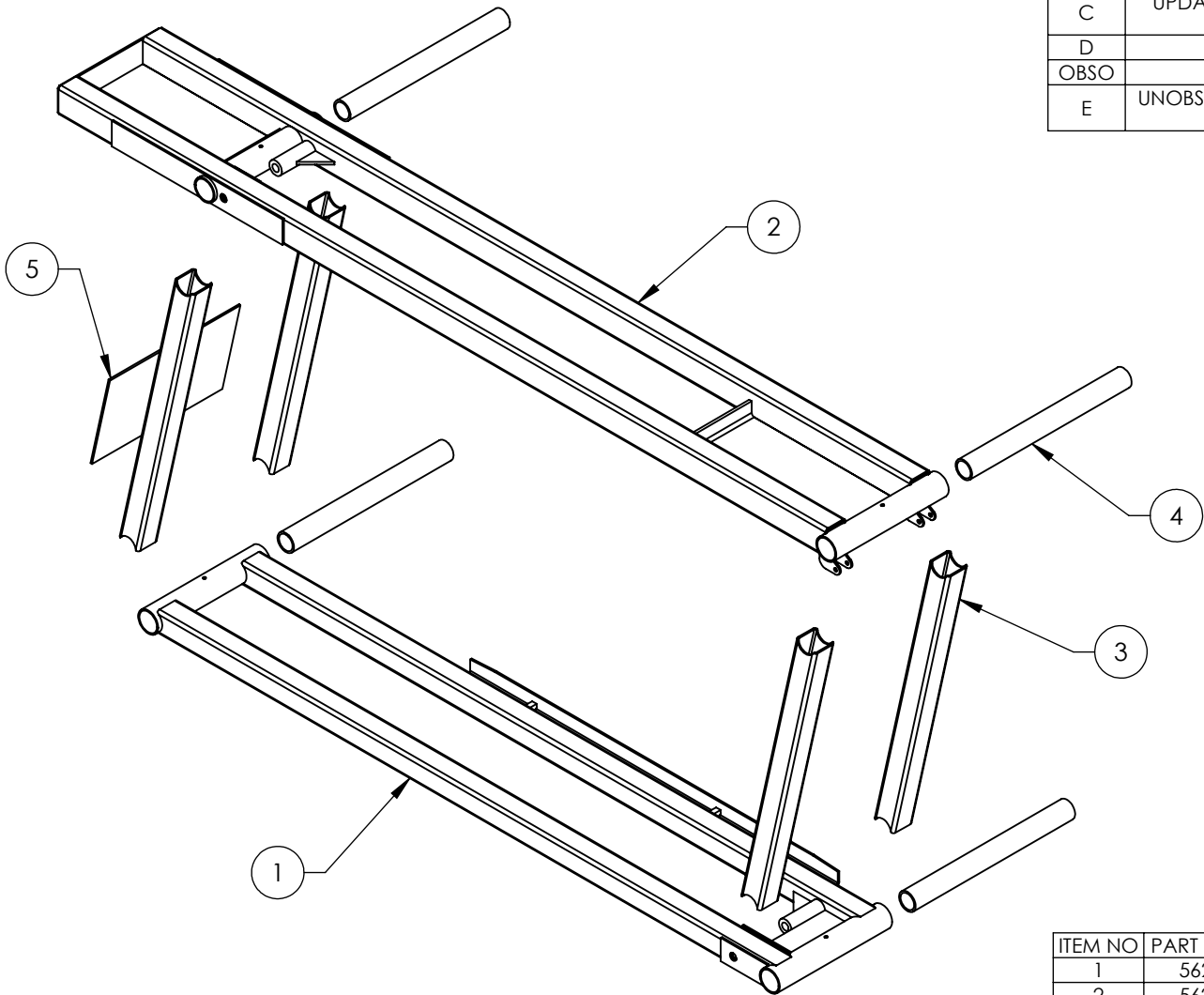
TITLE: QUICKJACK SAFETY BAR ASSEMBLY

SIZE DWG. NO. REV

**A** 5215918 B

SCALE: 1:3 SHEET 1 OF 1

REVISION				
REV	DESCRIPTION	DATE	EDITED BY	ECO#
C	UPDATED TITLE TO REFLECT MARKETING, UPDATED BOM REVISION	11/17/2020	CA	01237
D	UPDATED BOM REVISION	01/20/2021	TM	01265
OBSO	REPLACED WITH 5601757	11/11/2021	TM	01362
E	UNOBSOLETE FOR PRODUCTION, UPDATED BOM REVISIONS	03/14/2022	CA	01402



WHERE USED
7000TL

**NOTE: UNLESS OTHERWISE SPECIFIED.**

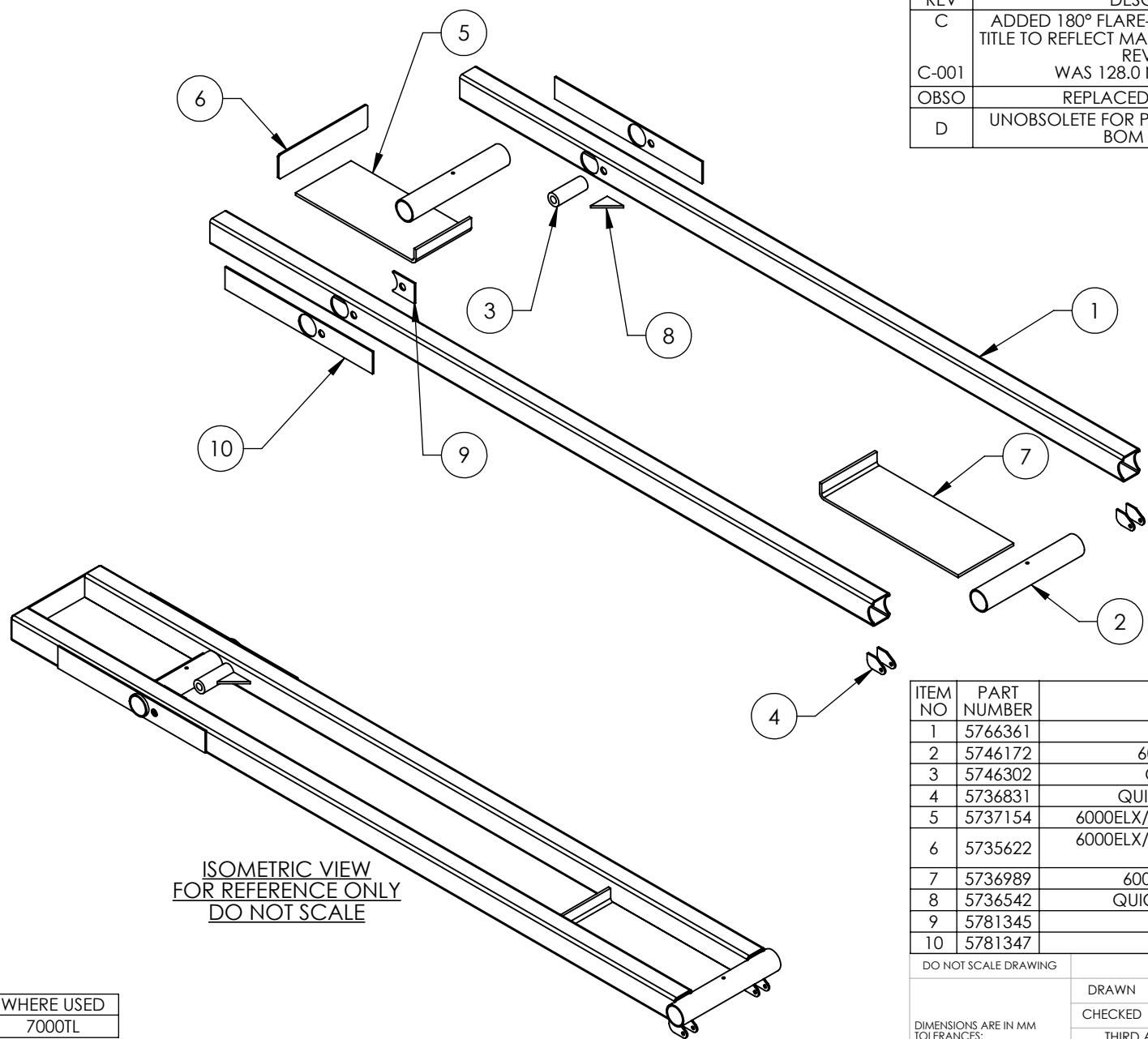
- REFER TO MODEL FOR ADDITIONAL INFORMATION
- BREAK AND DEBURR ALL SHARP EDGES 0.3mm
- REMOVE ALL WELD SPLATTER
- 5766359 MUST BE FREE TO ROTATE RELATIVE TO 5620647 AND 5620648
- DIMENSIONS SHOWN ARE AFTER PAINTING
- PAINT BLACK (RAL-9017) 20% GLOSS

ITEM NO	PART NUMBER	DESCRIPTION	QTY	REV
1	5620648	7000TL BOTTOM FRAME SUBWELDMT, R.H.	1	D
2	5620647	7000TL TOP FRAME SUBWELDMT	1	D
3	5766359	6000ELX/7000TL SCISSOR ARM TUBE	4	E
4	5746173	6000ELX/7000TL ARM HINGE AXLE	4	E
5	5735623	6000ELX/7000TL LOWER REAR GUSSET	1	D

DO NOT SCALE DRAWING	NAME	DATE	<b>BP BendPak.</b> 1645 LEMONWOOD DR. SANTA PAULA, CA 93060
	DRAWN	TM 04/17/2020	
DIMENSIONS ARE IN MM TOLERANCES: 0. = ±1.5 0.0 = ±0.5	CHECKED		TITLE: 7000TL FRAME WELDMT, R.H.
	THIRD ANGLE PROJECTION		SIZE DWG. NO.
SURFACE FINISH 1.6 ISO Ra μm FOR MACHINED SURFACES UNLESS OTHERWISE SPECIFIED			REV
			<b>A</b> 5601478
NEXT ASSEMBLY 5215921		SCALE: 1:10	SHEET 1 OF 2

PROPRIETARY AND CONFIDENTIAL  
THE INFORMATION CONTAINED IN THIS DRAWING IS  
THE SOLE PROPERTY OF BENDPAK INC. ANY  
REPRODUCTION IN PART OR AS A WHOLE WITHOUT  
THE WRITTEN PERMISSION OF BENDPAK INC. IS  
PROHIBITED.

REVISION				
REV	DESCRIPTION	DATE	EDITED BY	ECO#
C	ADDED 180° FLARE-BEVEL WELD, UPDATED TITLE TO REFLECT MARKETING, UPDATED BOM REVISIONS	12/01/2020	CA	01237
C-001	WAS 128.0 NOW 128 (pg2)	05/25/2021	OR	01304
OBSO	REPLACED WITH 5620757	1/11/2021	TM	01362
D	UNOBSOLETE FOR PRODUCTION, UPDATED BOM REVISION	03/14/2022	CA	01402



ISOMETRIC VIEW  
FOR REFERENCE ONLY  
DO NOT SCALE

ITEM NO	PART NUMBER	DESCRIPTION	QTY	REV
1	5766361	7000TL TOP TUBE	2	D
2	5746172	6000ELX/7000TL ARM HINGE TUBE	2	E
3	5746302	QUICKJACK CYLINDER SPACER	1	D
4	5736831	QUICKJACK WHEEL MOUNTING PLATE	4	F
5	5737154	6000ELX/7000TL RUBBER BLOCK TRAY EXTENSION	1	C
6	5735622	6000ELX/7000TL RUBBER BLOCK TRAY EXTENSION CLOSEOUT	1	F
7	5736989	6000ELX/7000TL RUBBER BLOCK TRAY	1	E
8	5736542	QUICKJACK CYLINDER SPACER GUSSET	1	E
9	5781345	7000TL CYLINDER PLATE	1	C
10	5781347	7000TL TOP FRAME GUSSET	2	D

WHERE USED
7000TL

**NOTE: UNLESS OTHERWISE SPECIFIED.**

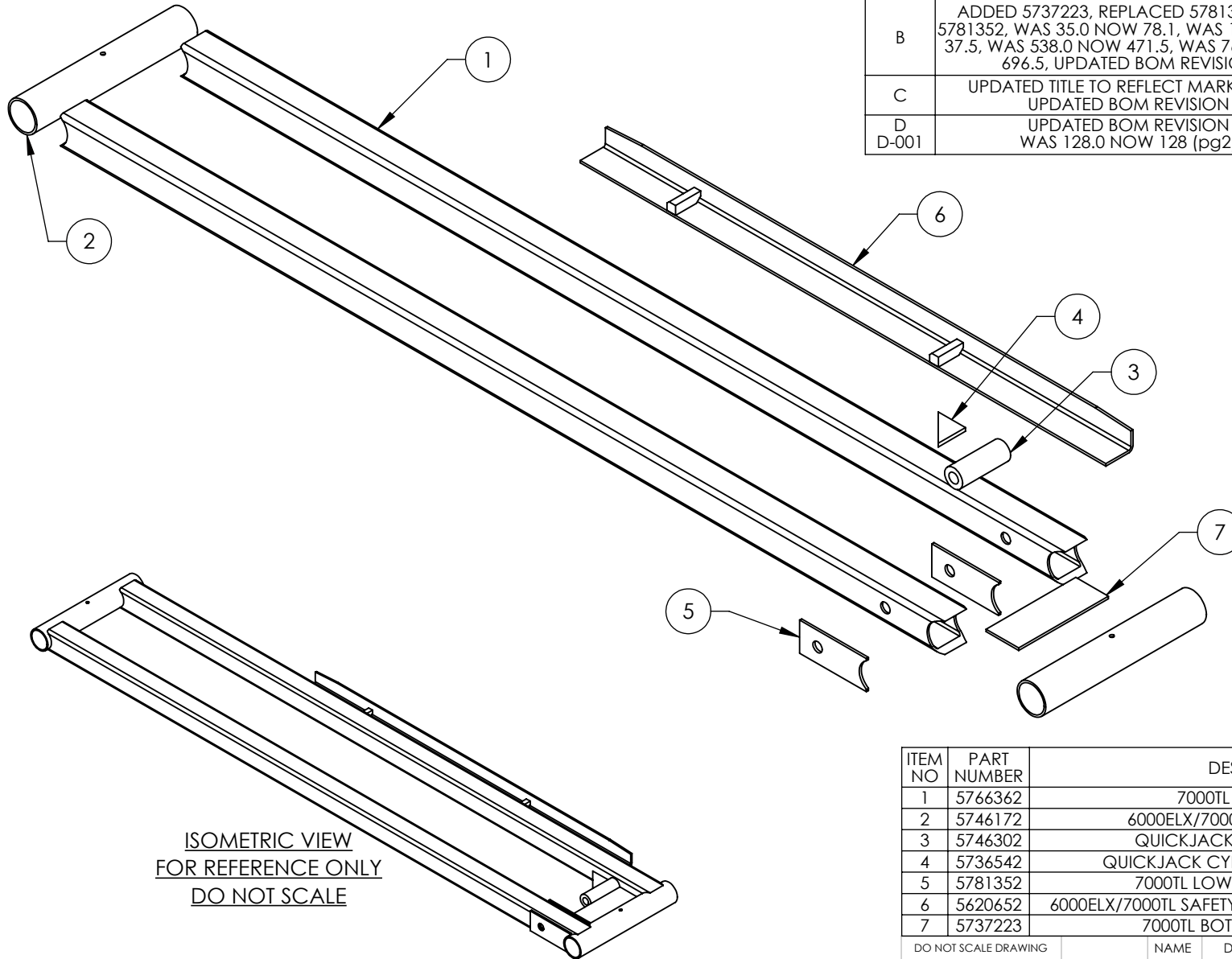
- REFER TO MODEL FOR ADDITIONAL INFORMATION
- BREAK AND DEBURR ALL SHARP EDGES 0.3mm
- REMOVE ALL WELD SPLATTER

NEXT ASSEMBLY
5601477
5601478

DO NOT SCALE DRAWING	NAME	DATE	
	DRAWN	TM 04/17/2020	
	CHECKED	OR 03/16/2022	
DIMENSIONS ARE IN MM TOLERANCES: 0. = ±1.5 0.0 = ±0.5	THIRD ANGLE PROJECTION		TITLE: <b>7000TL TOP FRAME SUBWELDMENT</b>
SURFACE FINISH 1.6 ISO Ra μm FOR MACHINED SURFACES UNLESS OTHERWISE SPECIFIED			SIZE DWG. NO. REV <b>A 5620647 D</b>
	PROPRIETARY AND CONFIDENTIAL THE INFORMATION CONTAINED IN THIS DRAWING IS THE SOLE PROPERTY OF BENDPAK INC. ANY REPRODUCTION IN PART OR AS A WHOLE WITHOUT THE WRITTEN PERMISSION OF BENDPAK INC. IS PROHIBITED.		SCALE: 1:10 SHEET 1 OF 3



REVISION				
REV	DESCRIPTION	DATE	EDITED BY	ECO#
B	ADDED 5737223, REPLACED 5781345 WITH 5781352, WAS 35.0 NOW 78.1, WAS 104.0 NOW 37.5, WAS 538.0 NOW 471.5, WAS 763.0 NOW 696.5, UPDATED BOM REVISION	10/27/2020	TM	01222
C	UPDATED TITLE TO REFLECT MARKETING, UPDATED BOM REVISION	11/17/2020	CA	01237
D D-001	UPDATED BOM REVISION WAS 128.0 NOW 128 (pg2)	01/25/2021 05/26/2021	TM OR	01265 01304



ISOMETRIC VIEW  
FOR REFERENCE ONLY  
DO NOT SCALE

ITEM NO	PART NUMBER	DESCRIPTION	QTY	REV
1	5766362	7000TL BOTTOM TUBE	2	C
2	5746172	6000ELX/7000TL ARM HINGE TUBE	2	E
3	5746302	QUICKJACK CYLINDER SPACER	1	D
4	5736542	QUICKJACK CYLINDER SPACER GUSSET	1	E
5	5781352	7000TL LOWER CYLINDER PLATE	2	B
6	5620652	6000ELX/7000TL SAFETY LADDER SUBWELDMENT, R.H.	1	B
7	5737223	7000TL BOTTOM REAR GUSSET	1	B

WHERE USED
7000TL

**NOTE: UNLESS OTHERWISE SPECIFIED.**

- REFER TO MODEL FOR ADDITIONAL INFORMATION
- BREAK AND DEBURR ALL SHARP EDGES 0.3mm
- REMOVE ALL WELD SPLATTER

NEXT ASSEMBLY  
5601478

DO NOT SCALE DRAWING	NAME	DATE	 1645 LEMONWOOD DR. SANTA PAULA, CA 93060
DIMENSIONS ARE IN MM TOLERANCES: 0. = ±1.5 0.0 = ±0.5	DRAWN	TM 04/17/2020	
	CHECKED	OR 05/27/2021	
SURFACE FINISH 1.6 ISO Ra μm FOR MACHINED SURFACES UNLESS OTHERWISE SPECIFIED	THIRD ANGLE PROJECTION		TITLE: 7000TL BOTTOM FRAME SUBWELDMENT, R.H.
			SIZE DWG. NO. REV <b>A</b> 5620648 D
<small>PROPRIETARY AND CONFIDENTIAL THE INFORMATION CONTAINED IN THIS DRAWING IS THE SOLE PROPERTY OF BENDPAK INC. ANY REPRODUCTION IN PART OR AS A WHOLE WITHOUT THE WRITTEN PERMISSION OF BENDPAK INC. IS PROHIBITED.</small>			SCALE: 1:6 SHEET 1 OF 2



# Quickjack 7000L & TLX Product Labels

**A**

7000TL

NET FRAME WT EA.: 97.75 lbs | POIDS NET DU CADRE: 45.5 kg      MAX. CAPACITY / PAIR: 7,000 lbs | CAPACITE MAX. / PAIRE: 3,175 kg

**REMARK / DANGER CANNOT BE RESPONSIBLE FOR DAMAGE OR INJURY RESULTING FROM LACK OF MAINTENANCE OR UNSAFE USE OF THIS PRODUCT. READ AND UNDERSTAND ALL WARNINGS AND INSTRUCTIONS BEFORE USE.**

**IMPORTANT OPERATION INSTRUCTIONS:**

- Use on hard leveled floor surface **ONLY**.
- **ALWAYS** check vehicle gross weight before attempting to use this equipment.
- **DO NOT** attempt to raise any load directly on the upper frame rails. Use only Rubber Contact Blocks to lift load. Rubber blocks **MUST** be in the Rubber Contact Trays.
- Visually inspect all components for damage prior to use. If any damage is found, **DO NOT USE THIS EQUIPMENT.**

**HYDRAULIC POWER SYSTEM WARNINGS:**

- All hose couplers **MUST** be correctly and completely fastened together before using this equipment or applying pressure.
- **NEVER ATTEMPT** to connect or disconnect hose couplers while hydraulic system is under pressure.
- Keep fittings clean and free of debris. Guard against dirt entering the system.
- Care must be taken to ensure that type of thread sealant does **NOT** enter the hydraulic system. Tape or thread sealant in fluid will impair fluid flow causing system malfunction.

**REMARK / DANGER DECLINE TOUTE RESPONSABILITE POUR LES DEGATS OU BLESSURES RESULTANT D'UN MANQUE D'ENTRETIEN OU D'UNE UTILISATION DANGEREUSE DE CE PRODUIT. LIRE ET COMPRENDRE TOUTES LES MISES EN GARDE ET INSTRUCTIONS AVANT UTILISATION.**

**INSTRUCTIONS D'UTILISATION:**

- Utiliser **UNIQUEMENT** sur une surface de sol dure et nivelée.
- Vérifiez **TOUJOURS** les poids brut du véhicule avant d'essayer d'utiliser cet équipement.
- N'essayez **PAS** de soulever une charge directement sur les longerons supérieurs du cadre. Utilisez uniquement des Blocs de Contact en Caoutchouc pour soulever la charge. Les Blocs en Caoutchouc **DOIVENT** se trouver dans les Plateaux de Contact en Caoutchouc.
- Vérifiez visuellement le bon état de toutes les pièces avant utilisation. En cas de dommages, **NE PAS UTILISER CE MATRIEL.**

**MISES EN GARDE CONCERNANT L'ALIMENTATION:**

- Tous les coupleurs de tuyaux **DOIVENT** être correctement et complètement faits ensemble avant d'utiliser cet équipement ou d'appliquer une pression.
- **NE JAMAIS TENTER** de connecter ou de déconnecter les coupleurs de tuyaux lorsque le système hydraulique est sous pression.
- Gardez les raccords propres et exempts de débris. Protégez-vous contre la saleté pénétrant dans le système.
- Il faut veiller à ce que du ruban adhésif ou du produit d'étanchéité pour filetage ne pénètre **PAS** dans le système hydraulique. Du ruban adhésif ou du produit d'étanchéité pour filetage dans le liquide nuira à l'écoulement du fluide et entraînera un dysfonctionnement du système.

**WARNING**  
AVERTISSEMENT

Keep feet clear of jack frames while lowering.  
Gardez les pieds à l'écart des cadres de levage durant l'abaissement.

**WARNING**  
AVERTISSEMENT

Keep clear of pinch points when jack frames are moving.  
Se tenir à l'écart des points de serrage quand les cadres de levage sont en mouvement.

**CAUTION**  
MISE EN GARDE

Use vehicle manufacturer's jack frame lifting points.  
Utiliser les points de levage prévus sur le véhicule.

**SAFETY INSTRUCTIONS**  
CONSIGNES DE SECURITE

Read operation / safety manuals before using jack frames.  
Lire les manuels d'utilisation / de sécurité avant d'utiliser les cadres de levage.

**USE ONLY AS ILLUSTRATED**  
UTILISER UNIQUEMENT COMME SUR L'ILLUSTRATION

Rubber contact blocks / Blocs d'appui en caoutchouc.  
Upper frame rails / Rails supérieurs du cadre.  
Lower frame rails / Rails inférieurs du cadre.

**DO NOT attempt to lift any load on the upper frame rails. Use RUBBER CONTACT BLOCKS only.**  
**NE PAS ESSAYER** de soulever une charge quelconque sur les rails de cadres supérieurs. Utilisez uniquement des BLOCS DE CONTACT EN CAOUTCHOUC.

QuickJack™ products are protected by one or more patents in the United States, Europe, and other countries, including the following: USA Patent 07161545, China Patent ZL2014300289.3, www.quickjack.com, PN 050504

**7000TL\_Operation\_Inst-ENG-FRE-Right-Frame.pdf**

Trim: 9"W x 6.5"H

**Material: 4 Mil. Permanent White Adhesive Vinyl**

Ink: U.V. protected CMYK 4/C Process

Finish: Matte Overlaminat (No Gloss)

Print Process: Offset Lithography - 200 line-screen or 300 p.p.i. for digital

Lamination: Clear laminate non-glare medium matte over-laminat (No gloss) for abrasion, chemical, and ultra violet protection.

Use on 7000TL Right Frame ONLY

PN 5905693

**B**

7000TL

NET FRAME WT EA.: 97.75 lbs | POIDS NET DU CADRE: 45.5 kg      MAX. CAPACITY / PAIR: 7,000 lbs | CAPACITE MAX. / PAIRE: 3,175 kg

**WARNING**

- Both frames are **NOT** interchangeable. Lock bars **MUST** be on the outside when lowering each frame.
- **ONLY** raise the frames with the weight of a vehicle on them.
- **DO NOT** lower vehicle to the ground if wheels are removed.
- **DO NOT** stop raising the frames until lock bars have passed the first locking position.

**SAFETY LOCK DEVICE**  
Confirm safety locks are engaged when platforms are raised.

**SAFETY IN LOCKED POSITION**  
Release Cam raised - Lock Bar rising against Lock Block

**POSITION VERROUILLÉE**  
Came de Déplacement élevé - Barre de Verrouillage ressortant contre Cale de Verrouillage

**AVERTISSEMENT**

- Les deux cadres **NE SONT PAS** interchangeables. Les barres de verrouillage **DOIVENT** être à l'extérieur lors de l'abaissement des cadres.
- Soulevez **UNIQUEMENT** les cadres avec le poids d'un véhicule sur eux.
- **NE PAS** abaisser le véhicule au sol si les roues sont délogées.
- **N'ARRÊTEZ PAS** de relever les cadres tant que les barres de verrouillage n'ont pas dépassé la première position de verrouillage.

**MÉCANISME DE VERROUILLAGE**  
Vérifiez que les verrous de sécurité sont engagés lorsque les plateformes sont soulevées.

**SAFETY NOT IN LOCKED POSITION**  
Release Cam lowered

**SECURITE PAS EN POSITION VERROUILLÉE**  
(Came de Déplacement baissé)

**SAFETY NOT IN LOCKED POSITION**  
Release Cam raised

**SECURITE PAS EN POSITION VERROUILLÉE**  
(Came de Déplacement élevé)

QuickJack™ products are protected by one or more patents in the United States, Europe, and other countries, including the following: USA Patent 07161545, China Patent ZL2014300289.3, www.quickjack.com, PN 050504

**7000TL\_Operation\_Inst-ENG-FRE\_Left-Frame.pdf**

Trim: 9"W x 6.5"H

**Material: 4 Mil. Permanent White Adhesive Vinyl**

Ink: U.V. protected CMYK 4/C Process

Finish: Matte Overlaminat (No Gloss)

Print Process: Offset Lithography - 200 line-screen or 300 p.p.i. for digital

Lamination: Clear laminate non-glare medium matte over-laminat (No gloss) for abrasion, chemical, and ultra violet protection.

Use on 7000TL Left Frame ONLY

PN 5905824

**C**

7000TLX

NET FRAME WT EA.: 103 lbs | POIDS NET DU CADRE: 47 kg      MAX. CAPACITY / PAIR: 7,000 lbs | CAPACITE MAX. / PAIRE: 3,175 kg

**REMARK / DANGER CANNOT BE RESPONSIBLE FOR DAMAGE OR INJURY RESULTING FROM LACK OF MAINTENANCE OR UNSAFE USE OF THIS PRODUCT. READ AND UNDERSTAND ALL WARNINGS AND INSTRUCTIONS BEFORE USE.**

**IMPORTANT OPERATION INSTRUCTIONS:**

- Use on hard leveled floor surface **ONLY**.
- **ALWAYS** check vehicle gross weight before attempting to use this equipment.
- **DO NOT** attempt to raise any load directly on the upper frame rails. Use only Rubber Contact Blocks to lift load. Rubber blocks **MUST** be in the Rubber Contact Trays.
- Visually inspect all components for damage prior to use. If any damage is found, **DO NOT USE THIS EQUIPMENT.**

**HYDRAULIC POWER SYSTEM WARNINGS:**

- All hose couplers **MUST** be correctly and completely fastened together before using this equipment or applying pressure.
- **NEVER ATTEMPT** to connect or disconnect hose couplers while hydraulic system is under pressure.
- Keep fittings clean and free of debris. Guard against dirt entering the system.
- Care must be taken to ensure that type of thread sealant does **NOT** enter the hydraulic system. Tape or thread sealant in fluid will impair fluid flow causing system malfunction.

**REMARK / DANGER DECLINE TOUTE RESPONSABILITE POUR LES DEGATS OU BLESSURES RESULTANT D'UN MANQUE D'ENTRETIEN OU D'UNE UTILISATION DANGEREUSE DE CE PRODUIT. LIRE ET COMPRENDRE TOUTES LES MISES EN GARDE ET INSTRUCTIONS AVANT UTILISATION.**

**INSTRUCTIONS D'UTILISATION:**

- Utiliser **UNIQUEMENT** sur une surface de sol dure et nivelée.
- Vérifiez **TOUJOURS** les poids brut du véhicule avant d'essayer d'utiliser cet équipement.
- N'essayez **PAS** de soulever une charge directement sur les longerons supérieurs du cadre. Utilisez uniquement des Blocs de Contact en Caoutchouc pour soulever la charge. Les Blocs en Caoutchouc **DOIVENT** se trouver dans les Plateaux de Contact en Caoutchouc.
- Vérifiez visuellement le bon état de toutes les pièces avant utilisation. En cas de dommages, **NE PAS UTILISER CE MATRIEL.**

**MISES EN GARDE CONCERNANT L'ALIMENTATION:**

- Tous les coupleurs de tuyaux **DOIVENT** être correctement et complètement faits ensemble avant d'utiliser cet équipement ou d'appliquer une pression.
- **NE JAMAIS TENTER** de connecter ou de déconnecter les coupleurs de tuyaux lorsque le système hydraulique est sous pression.
- Gardez les raccords propres et exempts de débris. Protégez-vous contre la saleté pénétrant dans le système.
- Il faut veiller à ce que du ruban adhésif ou du produit d'étanchéité pour filetage ne pénètre **PAS** dans le système hydraulique. Du ruban adhésif ou du produit d'étanchéité pour filetage dans le liquide nuira à l'écoulement du fluide et entraînera un dysfonctionnement du système.

**WARNING**  
AVERTISSEMENT

Keep feet clear of jack frames while lowering.  
Gardez les pieds à l'écart des cadres de levage durant l'abaissement.

**WARNING**  
AVERTISSEMENT

Keep clear of pinch points when jack frames are moving.  
Se tenir à l'écart des points de serrage quand les cadres de levage sont en mouvement.

**CAUTION**  
MISE EN GARDE

Use vehicle manufacturer's jack frame lifting points.  
Utiliser les points de levage prévus sur le véhicule.

**SAFETY INSTRUCTIONS**  
CONSIGNES DE SECURITE

Read operation / safety manuals before using jack frames.  
Lire les manuels d'utilisation / de sécurité avant d'utiliser les cadres de levage.

**USE ONLY AS ILLUSTRATED**  
UTILISER UNIQUEMENT COMME SUR L'ILLUSTRATION

Rubber contact blocks / Blocs d'appui en caoutchouc.  
Upper frame rails / Rails supérieurs du cadre.  
Lower frame rails / Rails inférieurs du cadre.

**DO NOT attempt to lift any load on the upper frame rails. Use RUBBER CONTACT BLOCKS only.**  
**NE PAS ESSAYER** de soulever une charge quelconque sur les rails de cadres supérieurs. Utilisez uniquement des BLOCS DE CONTACT EN CAOUTCHOUC.

QuickJack™ products are protected by one or more patents in the United States, Europe, and other countries, including the following: USA Patent 07161545, China Patent ZL2014300289.3, www.quickjack.com, PN 050504

**7000TLX\_Operation\_Inst-ENG-FRE-Right-Frame.pdf**

Trim: 9"W x 6.5"H

**Material: 4 Mil. Permanent White Adhesive Vinyl**

Ink: U.V. protected CMYK 4/C Process

Finish: Matte Overlaminat (No Gloss)

Print Process: Offset Lithography - 200 line-screen or 300 p.p.i. for digital

Lamination: Clear laminate non-glare medium matte over-laminat (No gloss) for abrasion, chemical, and ultra violet protection.

Use on 7000TLX Right Frame ONLY

PN 5905694

IMPORTANT: Please use materials as instructed

# Quickjack 7000TL & TLX Product Labels

**D**

**QUICKJACK™ 7000TLX**

NET FRAME WT EA.: 103 lbs | POIDS NET DU CADRE: 47 kg      MAX. CAPACITY / PAIR: 7,000 lbs | CAPACITÉ MAX. / PAIRE: 3,175 kg

**WARNING** Both frames are NOT interchangeable. Lock bars MUST be on the outside when entering each frame. ONLY raise the frames with the weight of a vehicle on them. DO NOT lower vehicle to the ground if wheels are removed. DO NOT stop raising the frames until lock bars have passed the first locking position.

**AVERTISSEMENT** Les deux cadres NE SONT PAS interchangeables. Les barres de verrouillage DOIVENT être à l'extérieur lors de l'orientation des cadres. Soulevez UNIQUEMENT les cadres avec le poids d'un véhicule sur eux. NE PAS abaisser le véhicule au sol si les roues sont déposées. N'ARRÊTEZ PAS de relever les cadres tant que les barres de verrouillage n'ont pas dépassé la première position de verrouillage.

**SAFETY LOCK DEVICE** Confirm safety locks are engaged when platforms are raised.

**SAFETY IN LOCKED POSITION** Release Cam raised - Lock Bar resting against Lock Block.

**POSITION VERROUILLÉE** (Came de Déplacement élevé - Barre de Verrouillage reposant contre Cale de Verrouillage)

**SAFETY NOT IN LOCKED POSITION** (Release Cam lowered)

**SÉCURITÉ PAS EN POSITION VERROUILLÉE** (Came de Déplacement baissé)

**MÉCANISME DE VERROUILLAGE** Vérifiez que les verrous de sécurité sont engagés lorsque les plates-formes sont soulevées.

**SAFETY NOT IN LOCKED POSITION** (Release Cam raised)

**SÉCURITÉ PAS EN POSITION VERROUILLÉE** (Came de Déplacement élevé)

CE      QuickJack™ products are protected by one or more patents in the United States, Europe, and other countries, including the following: USA Patent 07161545, China Patent ZL2014308583.X. Les produits QuickJack™ sont protégés par un ou plusieurs brevets aux États-Unis, en Europe et dans d'autres pays: brevet américain 07161545, brevet ZL2014308583.X en Chine.

7000TLX\_Operation\_Inst-ENG-FRE-Left-Frame.pdf

Trim: 9"W x 6.5"H

Material: 4 Mil. Permanent White Adhesive Vinyl

Ink: U.V. protected CMYK 4/C Process

Finish: Matte Overlaminated (No Gloss)

Print Process: Offset Lithography - 200 line-screen or 300 p.p.i. for digital

Lamination: Clear laminate non-glare medium matte over-laminated (No gloss) for abrasion, chemical, and ultra violet protection.

**Use on 7000TLX Left Frame ONLY**

PN 5905825

**E**

**QUICKJACK™**

P/N 5905745

QuickJack Cylinder Decal

Material: Clear Adhesive PET

Trim: 14"W x 2"H

Thickness: 4 Mil

Finish: Matte overlaminated (No gloss)

Ink: U.V. protected, Opaque White

PN 5905745

**CLEAR ADHESIVE PET - DOES NOT PRINT YELLOW**

Print Process: Silk Screen, 85 line-screen (Yellow color in file represents what should be clear PET material and SHOULD NOT print as Yellow ink. White area in file represents Opaque White ink.)

Lamination: Clear laminate non-glare medium matte over-laminated (No gloss) for abrasion, chemical, and ultra violet protection.

**F**

**WARNING** SAFETY LOCK DEVICE Confirm safety locks are engaged when platforms are raised.

**AVERTISSEMENT** MÉCANISME DE VERROUILLAGE Vérifiez que les verrous de sécurité sont engagés lorsque les plates-formes sont soulevées.

**SAFETY IN LOCKED POSITION** Release Cam raised - Lock Bar resting against Lock Block.

**POSITION VERROUILLÉE** (Came de Déplacement élevé - Barre de Verrouillage reposant contre Cale de Verrouillage)

**SAFETY NOT IN LOCKED POSITION** (Release Cam lowered)

**SÉCURITÉ PAS EN POSITION VERROUILLÉE** (Came de Déplacement baissé)

**MÉCANISME DE VERROUILLAGE** Vérifiez que les verrous de sécurité sont engagés lorsque les plates-formes sont soulevées.

**SAFETY NOT IN LOCKED POSITION** (Release Cam raised)

**SÉCURITÉ PAS EN POSITION VERROUILLÉE** (Came de Déplacement élevé)

QuickJack Safety Bar Warning-ENG/FRE

Trim: 14"W x 0.625"H

Material: 4 Mil. Permanent White Adhesive Vinyl

Ink: U.V. protected CMYK 4/C Process

Finish: Matte Overlaminated (No Gloss)

Print Process: Offset Lithography - 200 line-screen or 300 p.p.i. for digital

Lamination: Clear laminate non-glare medium matte over-laminated (No gloss) for abrasion, chemical, and ultra violet protection.

PN 5905428

**G**

**CAUTION** KEEP HANDS CLEAR OF PINCH POINTS. DO NOT ATTEMPT TO LIFT ANY LOAD ON UPPERFRAME RAILS. USE RUBBER CONTACT BLOCKS ONLY.

**ATTENTION** TENIR LES MAINS À L'ÉCART DES POINTS DE PINCEMENT. NE PAS TENTER DE LEVER DES CHARGES PAR LES RAILS SUPÉRIEURS DU CADRE. UTILISER LES CALES D'APPUI EN CAOUTCHOUC.

QuickJack Pinch Points-ENG/FRE

Trim: 15"W x 0.625"H

Material: 4 Mil. Permanent White Adhesive Vinyl

Ink: U.V. protected CMYK 4/C Process

Finish: Matte Overlaminated (No Gloss)

Print Process: Offset Lithography - 200 line-screen or 300 p.p.i. for digital

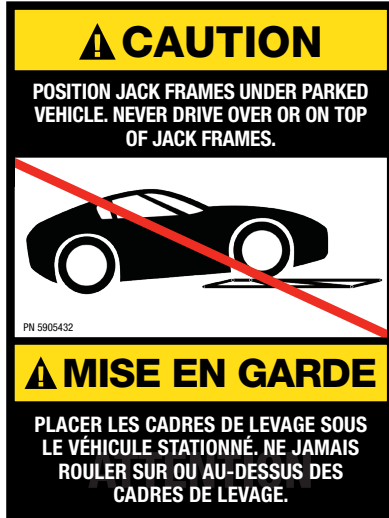
Lamination: Clear laminate non-glare medium matte over-laminated (No gloss) for abrasion, chemical, and ultra violet protection.

PN 5905429

**IMPORTANT: Please use materials as instructed**

# Quickjack 7000TL & TLX Product Labels

**H**



PN 5905432

**Caution Do Not Drive Over-ENG/FRE.pdf**

Trim: 3"W x 3.5"H

**Material: 4 Mil. Permanent White Adhesive Vinyl**

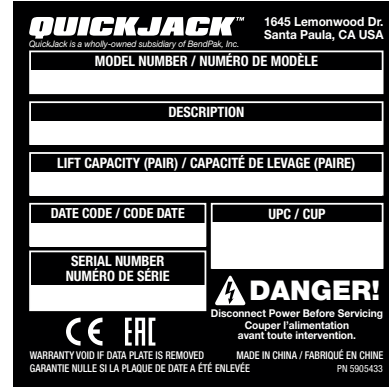
**Finish:** Matte overlamine (No gloss)

**Ink:** U.V. protected CMYK 4/C Process

**Print Process:** Offset Lithography - 200 line-screen or 300 p.p.i. for digital

**Lamination:** Clear laminate non-glare medium matte over-lamine (No gloss) for abrasion, chemical, and ultra violet protection.

**I**



PN 5905433

**Place on Left Frame Only**

**QuickJack Serial Tag-ENG/FRE**

Trim: 3"W x 3"H

**Material:** 2 Mil. Matte Silver Polyester (Flex-PSE)

*Print using thermal transfer printer with resin ribbon*

**J**



PN 5905434

**QuickJack Danger Air-ENG/FRE**

Trim: 5.5"W x 1.5"H

**Material: 4 Mil. Permanent White Adhesive Vinyl**

**Finish:** Matte Overlamine (No gloss)

**Ink:** U.V. protected CMYK 4/C Process

**Print Process:** Offset Lithography - 200 line-screen or 300 p.p.i. for digital

**Lamination:** Clear laminate non-glare medium matte over-lamine (no gloss) for abrasion, chemical, and ultra violet protection.

**K**



PN 5905438

**Max Capacity Label 7000 lbs-ENG/FRE**

Trim: 4.5"W x 1"H

**Material: 4 Mil. Permanent White Adhesive Vinyl**

**Ink:** U.V. protected CMYK 4/C Process

**Finish:** Matte Overlamine (No Gloss)

**Print Process:** Offset Lithography - 200 line-screen or 300 p.p.i. for digital

**Lamination:** Clear laminate non-glare medium matte over-lamine (No gloss) for abrasion, chemical, and ultra violet protection.

**L**



PN 5905036

**Caution Route Hose Under-ENG/FRE**

Trim: 10"W x 0.625"H

**Material: 4 Mil. Permanent White Adhesive Vinyl**

**Ink:** U.V. protected CMYK 4/C Process

**Finish:** Matte Overlamine (No Gloss)

**Print Process:** Offset Lithography - 200 line-screen or 300 p.p.i. for digital

**Lamination:** Clear laminate non-glare medium matte over-lamine (No gloss) for abrasion, chemical, and ultra violet protection.

**IMPORTANT: Please use materials as instructed**

# Quickjack 7000TL & TLX Label Placement

**M**

## CALIFORNIA PROPOSITION 65

### ⚠ WARNING ⚠

**WARNING!** This product can expose you to chemicals including styrene and vinyl chloride which are on the list of over 900 chemicals identified by the State of California to cause cancer, birth defects or reproductive harm. ALWAYS use this product in accordance with the manufacturer's instructions.

For more information, go to [www.p65warnings.ca.gov](http://www.p65warnings.ca.gov). PN 5905775

PN 5905775

Prop\_65\_Label.pdf:

Size: 1.5"W x 1.5"H

**Material: 4 Mil. Permanent White Adhesive Vinyl**

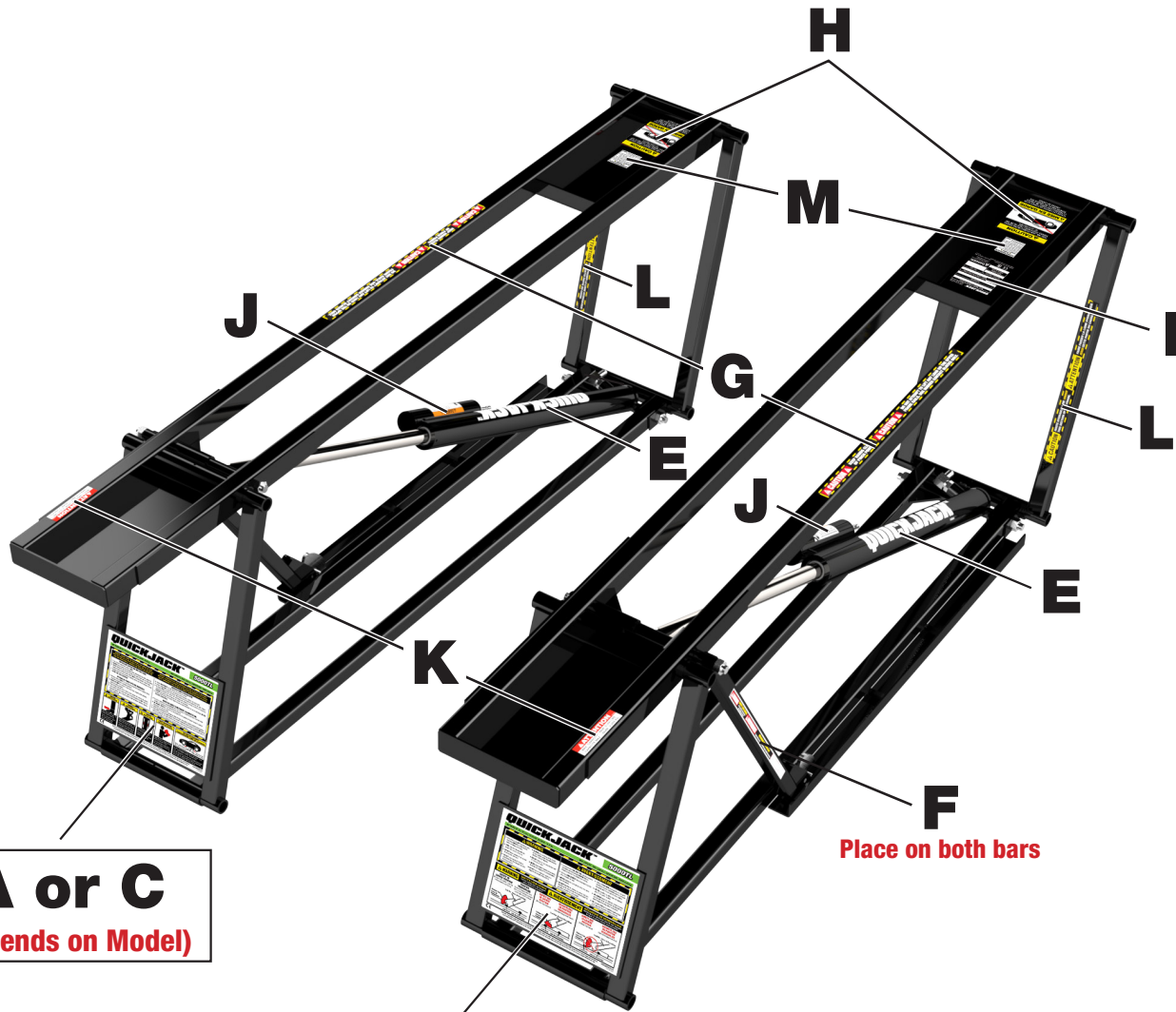
Ink: U.V. protected CMYK 2/C Process

Finish: Matte Overlaminat (No gloss)

Print Process: Offset Lithography - 200 line-screen or 300 p.p.i. for digital

Lamination: Clear laminate non-glare medium matte over-laminat (No gloss) for abrasion, chemical and ultra violet protection.

**Place on Both Frames**

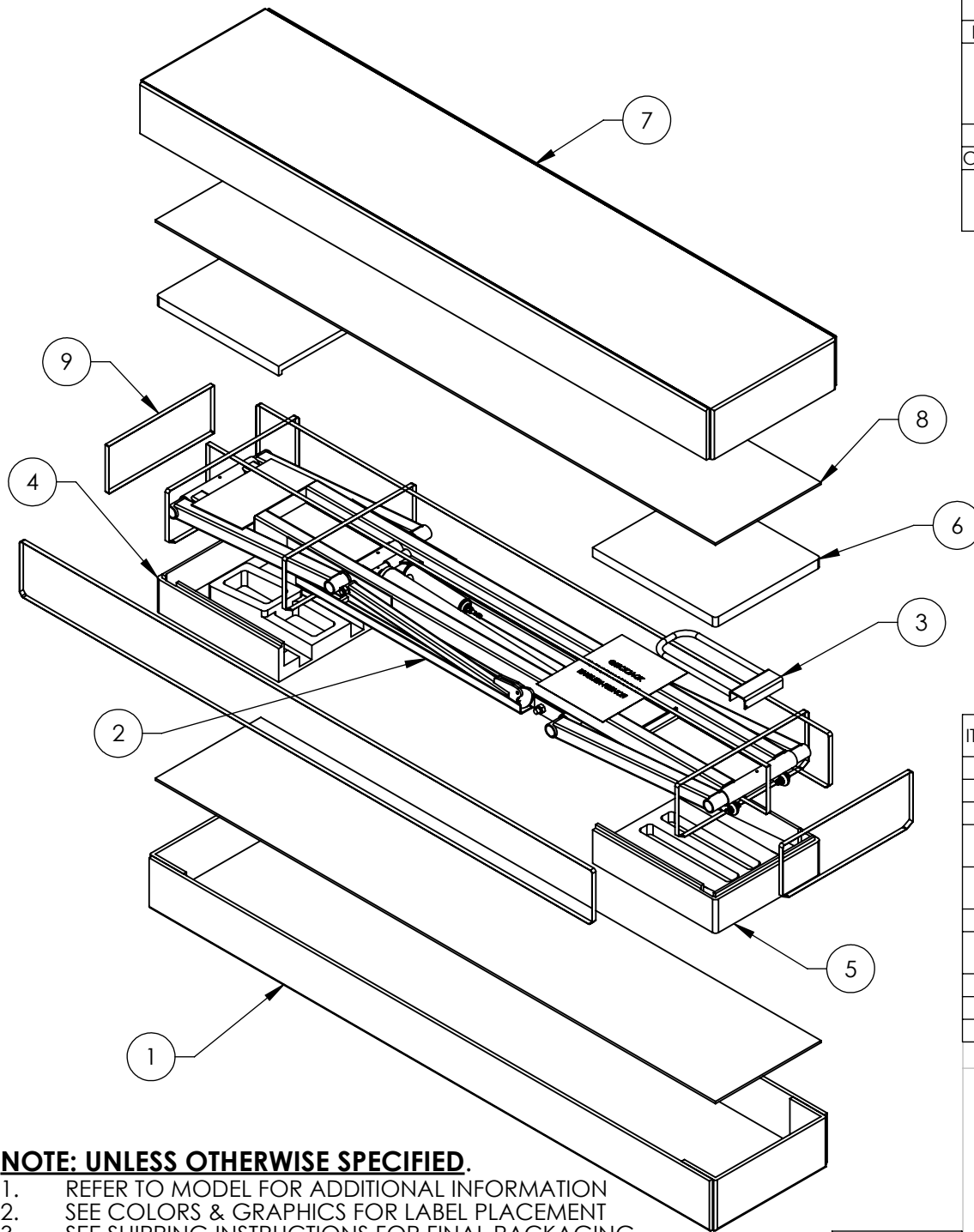


**A or C**  
(Depends on Model)

**B or D**  
(Depends on Model)

**IMPORTANT**  
**MAKE SURE LABELS ARE READABLE FROM THE SAFETY LOCK BAR SIDE**

**IMPORTANT: Please use materials as instructed**

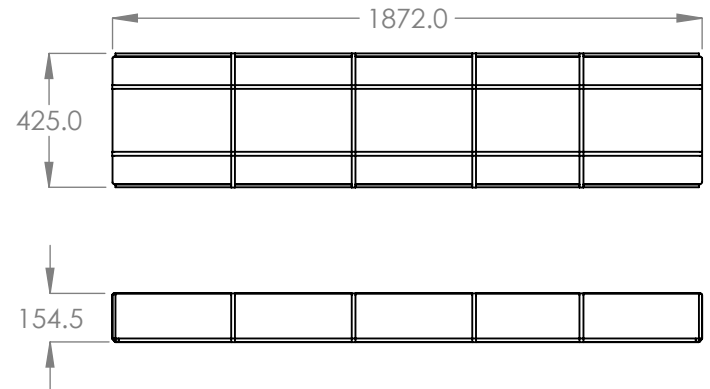


**NOTE: UNLESS OTHERWISE SPECIFIED.**

1. REFER TO MODEL FOR ADDITIONAL INFORMATION
2. SEE COLORS & GRAPHICS FOR LABEL PLACEMENT
3. SEE SHIPPING INSTRUCTIONS FOR FINAL PACKAGING
4. ASSEMBLE ITEMS AS SHOWN

WHERE USED  
7000TL

REVISION				
REV	DESCRIPTION	DATE	EDITED BY	ECO#
C	REPLACED 5900008 WITH 5900263, AND 5905693 WITH 5905824, ADDED 5905756, UPDATED TITLE TO REFLECT MARKETING, UPDATED BOM REVISION	12/23/2020	CA	01237
D	UPDATED BOM REVISION	01/20/2021	TM	01265
OBSO	REPLACED WITH 5216101	11/11/2021	TM	01362
E	UNOBSOLETE FOR PRODUCTION, REPLACED LABELS WITH COLORS & GRAPHICS NOTE, UPDATED BOM REVISIONS	03/14/2022	CA	01402



ITEM NO	PART NUMBER	DESCRIPTION	QTY	REV
1	5910009	7000TL PACKAGING BOTTOM BOX	1	C
2	5215919	7000TL FRAME ASSEMBLY, L.H.	1	E
3	5601108	QUICKJACK HANDLE WELDMENT	1	D
4	5930189	6000ELX/7000TL FRONT BOTTOM STYROFOAM PACKAGING	1	C
5	5930188	6000ELX/7000TL REAR BOTTOM STYROFOAM PACKAGING	1	B
6	5930191	6000ELX/7000TL TOP STYROFOAM PACKAGING	2	B
7	5910001	PACKAGING TOP BOX; 7000TL BOX 1-LEFT, ENGLISH-FRENCH	1	C
8	5940059	PLYWOOD INSERT, 1832 x 345 x 6mm	2	B
9	5930575	.50" PLASTIC STRAPPING	10	-
-	5900263	QUICKJACK TL/TLX/ELX MANUAL, ENGLISH-FRENCH	1	-

DO NOT SCALE DRAWING

NAME	DATE
DRAWN TM	04/17/2020
CHECKED	



1645 LEMONWOOD DR.  
SANTA PAULA, CA 93060

DIMENSIONS ARE IN MM

THIRD ANGLE PROJECTION



PROPRIETARY AND CONFIDENTIAL  
THE INFORMATION CONTAINED IN THIS DRAWING IS THE SOLE PROPERTY OF BENDPAK INC. ANY REPRODUCTION IN PART OR AS A WHOLE WITHOUT THE WRITTEN PERMISSION OF BENDPAK INC. IS PROHIBITED.

TITLE: 7000TL VER E  
PACKAGING, BOX 1  
ENGLISH-FRENCH

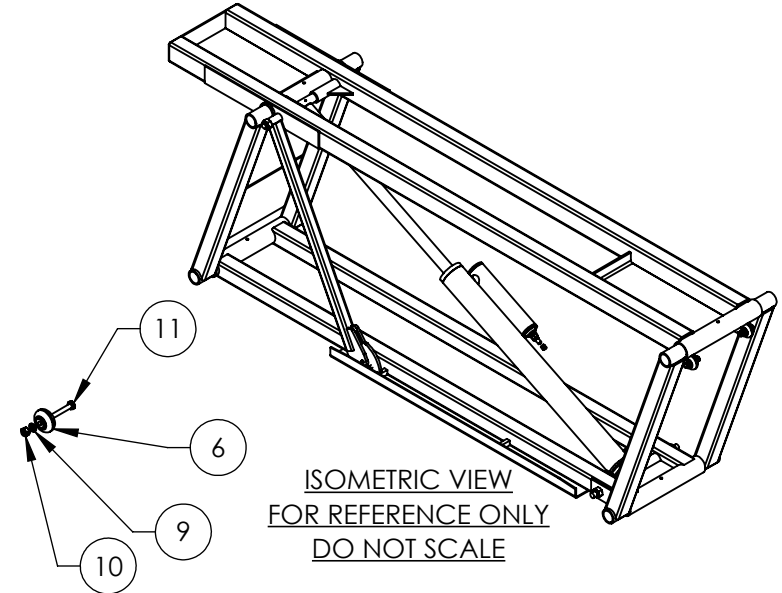
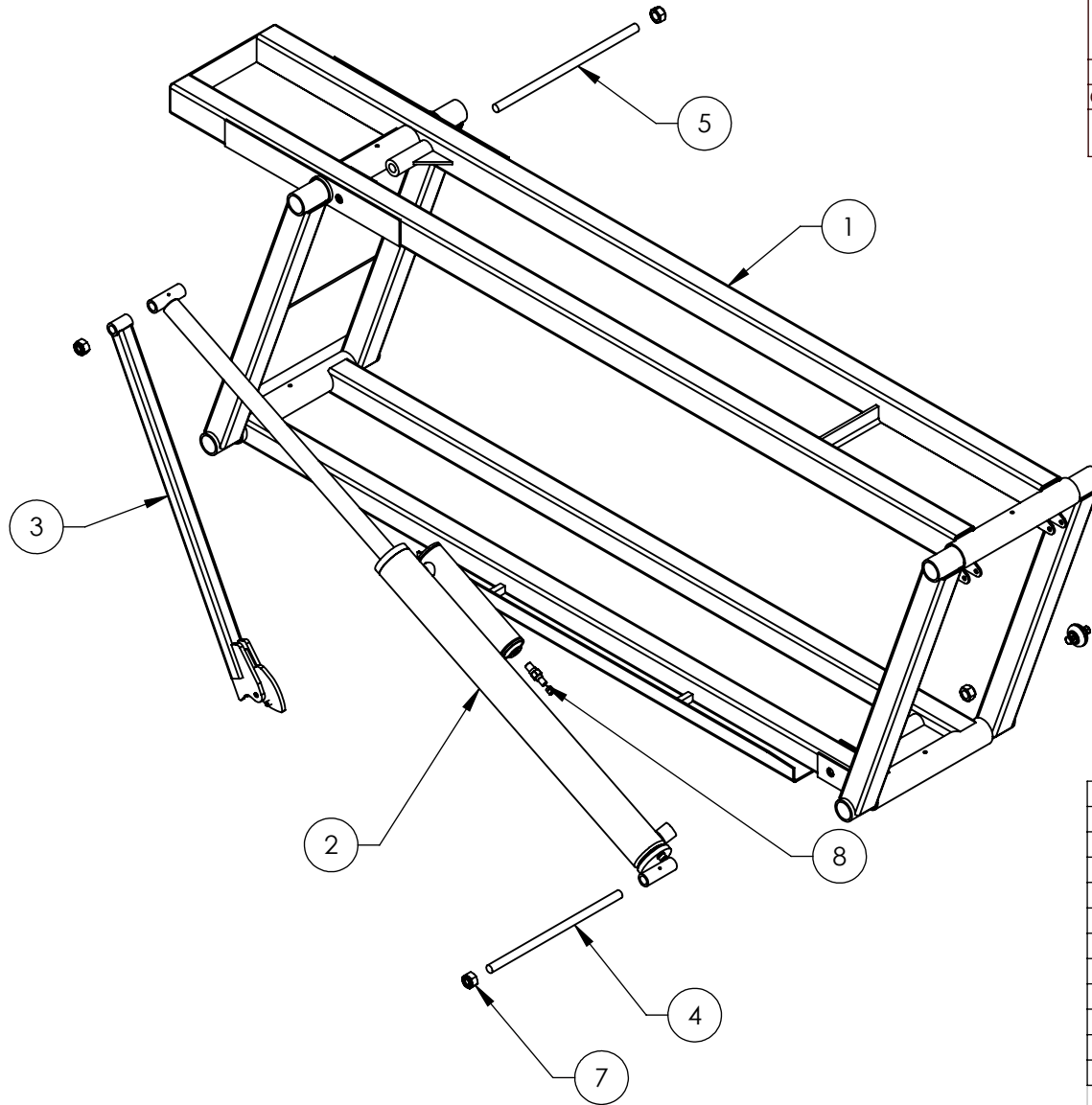
SIZE DWG. NO. REV  
A 5215929 E

SCALE: 1:15

SHEET 1 OF 1



REVISION				
REV	DESCRIPTION	DATE	EDITED BY	ECO#
C	TOP LOCK WAS 533.1 NOW 527.1, LOWEST LOCK WAS 327.1 NOW 375.5, REMOVED MIDDLE LOCK, UPDATED TITLE TO REFLECT MARKETING, UPDATED BOM REVISIONS	12/16/2020	CA	01237
D	UPDATED BOM REVISION	01/25/2021	TM	01265
OBSO	REPLACED WITH 5216091	11/11/2021	TM	01362
E	UNOBSOLETE FOR PRODUCTION, UPDATED BOM REVISIONS	03/14/2022	CA	01402



ITEM NO	PART NUMBER	DESCRIPTION	QTY	REV
1	5601477	7000TL FRAME WELDMENT, L.H.	1	E
2	5502041	OFFSET CYLINDER ASSEMBLY Ø1.75 x 18.329in	1	C
3	5215918	QUICKJACK SAFETY BAR ASSEMBLY	1	B
4	5746670	DOUBLE THREADED ROD M12 x 1.75 x 254	1	G
5	5746142	DOUBLE THREADED ROD M12 x 1.75 x 274	1	D
6	5716192	QUICKJACK POLYURETHANE WHEEL	2	E
7	5535012	NUT M12 x 1.75 NL	4	-
8	5550055	FTG NPL -02 STM x -02 NPT	1	-
9	5545026	WASHER M6 x Ø12 SL	2	-
10	5535357	NUT M6 x 1.0 NL	2	-
11	5530027	HHB M6 x 1.0 x 35	2	-

WHERE USED
7000TL

**NOTE: UNLESS OTHERWISE SPECIFIED.**

- REFER TO MODEL FOR ADDITIONAL INFORMATION
- SEE SHIPPING INSTRUCTIONS FOR FINAL PACKAGING
- ASSEMBLE ITEMS AS SHOWN

NEXT ASSEMBLY
5215929
5260613

DO NOT SCALE DRAWING

NAME	DATE
TM	04/17/2020

CHECKED

DIMENSIONS ARE IN MM



THIRD ANGLE PROJECTION



PROPRIETARY AND CONFIDENTIAL  
THE INFORMATION CONTAINED IN THIS DRAWING IS THE SOLE PROPERTY OF BENDPAK INC. ANY REPRODUCTION IN PART OR AS A WHOLE WITHOUT THE WRITTEN PERMISSION OF BENDPAK INC. IS PROHIBITED.



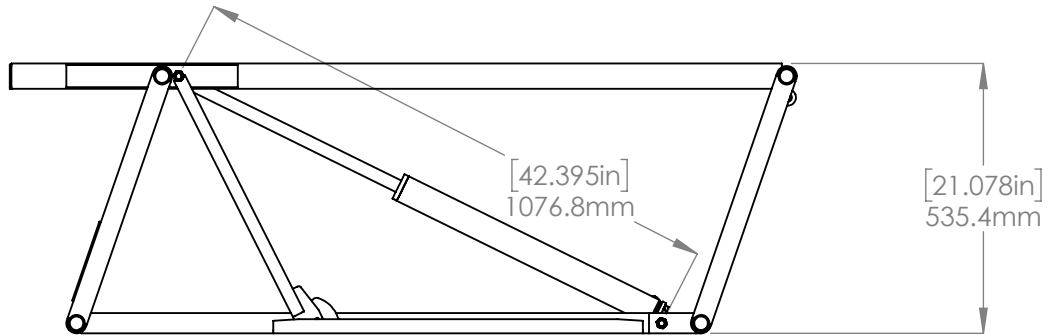
1645 LEMONWOOD DR.  
SANTA PAULA, CA 93060

TITLE: 7000TL FRAME ASSEMBLY, L.H.

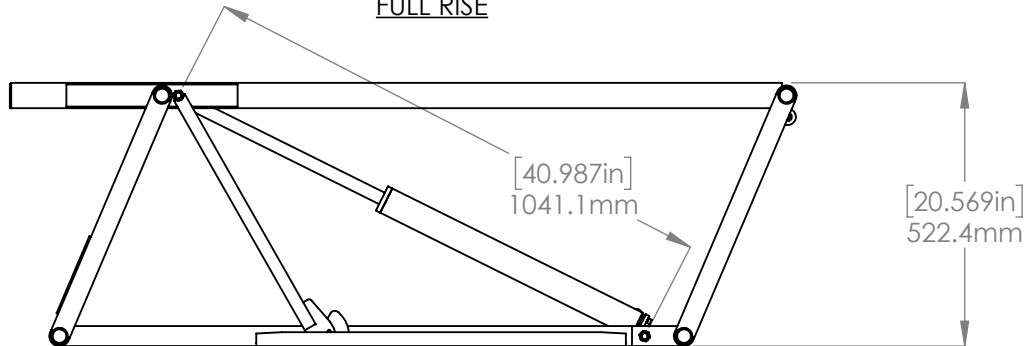
SIZE DWG. NO.	REV
A 5215919	E

SCALE: 1:10

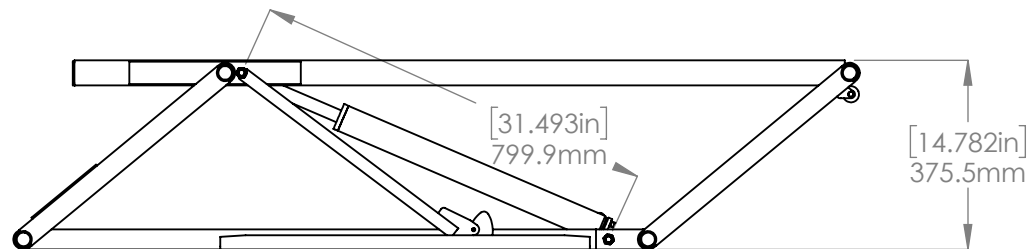
SHEET 1 OF 2



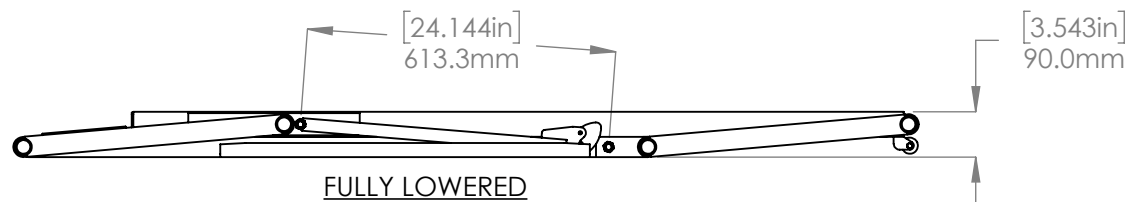
FULL RISE




TOP LOCK



LOWEST LOCK

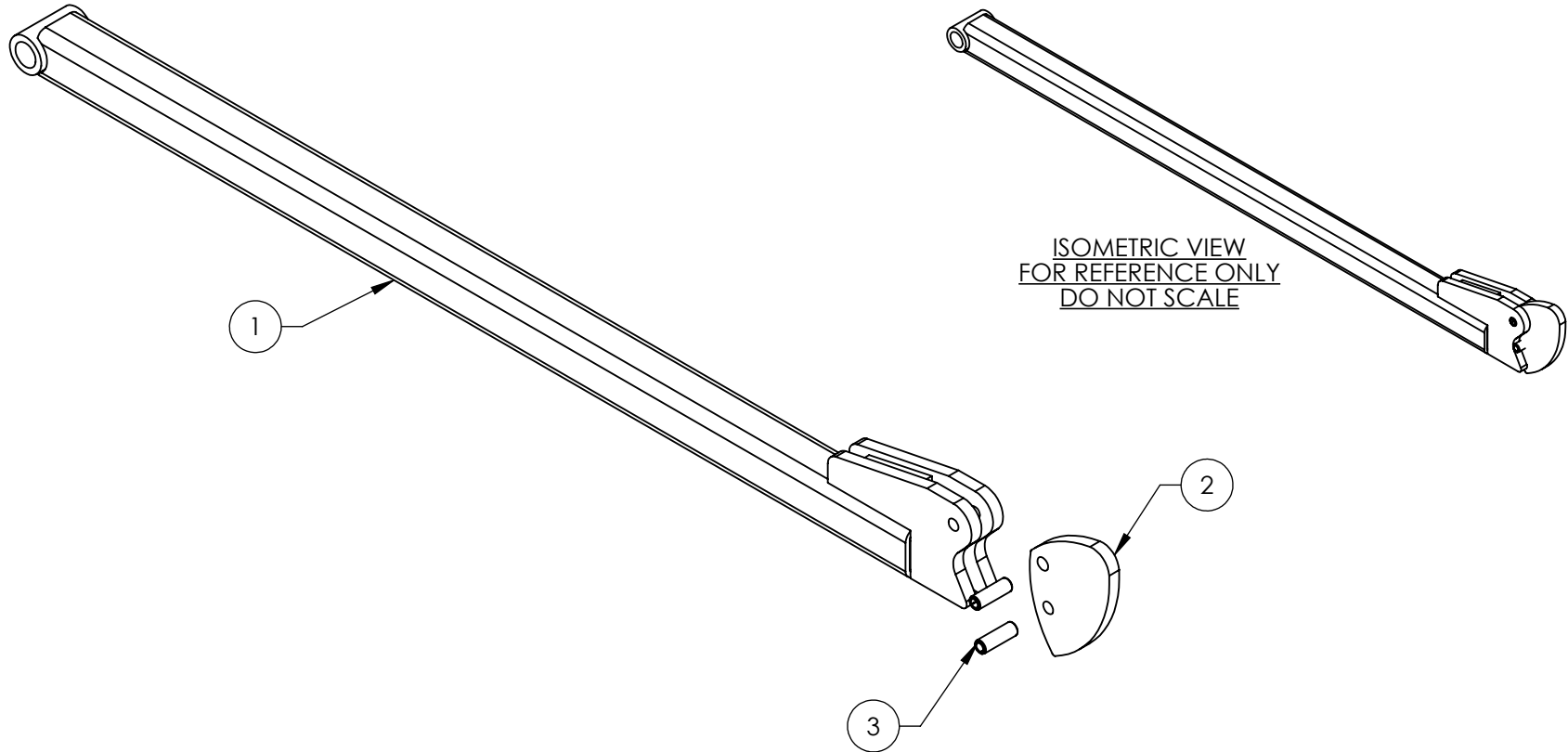


FULLY LOWERED

		
1645 LEMONWOOD DR. SANTA PAULA, CA 93060		
TITLE: 7000TL FRAME ASSEMBLY, L.H.		
SIZE	DWG. NO.	REV
<b>A</b>	5215919	E
SCALE: 1:15		SHEET 2 OF 2



REVISION				
REV	DESCRIPTION	DATE	EDITED BY	ECO#
A	PRODUCTION RELEASE, DERIVED FROM 5215244	04/06/2020	TM	01159
B	UPDATED BOM REVISION	10/26/2020	TM	01222



WHERE USED
5000TL SERIES
6000ELX
7000TL SERIES

**NOTE: UNLESS OTHERWISE SPECIFIED.**

- REFER TO MODEL FOR ADDITIONAL INFORMATION
- ASSEMBLE ITEMS AS SHOWN

ITEM NO	PART NUMBER	DESCRIPTION	QTY	REV
1	5601476	QUICKJACK SAFETY ARM WELDMENT	1	B
2	5736887	QUICKJACK SAFETY LATCH	1	B
3	5505028	SPRING PIN M6 x 20	2	-

NEXT ASSEMBLY
5215919
5215920
5215921
5215922
5215923
5215924
5215925
5215926
5215937
5215950

DO NOT SCALE DRAWING

DIMENSIONS ARE IN MM

NAME: TM DATE: 04/06/2020

CHECKED: OR DATE: 11/06/2020

THIRD ANGLE PROJECTION

**PROPRIETARY AND CONFIDENTIAL**  
 THE INFORMATION CONTAINED IN THIS DRAWING IS THE SOLE PROPERTY OF BENDPAK INC. ANY REPRODUCTION IN PART OR AS A WHOLE WITHOUT THE WRITTEN PERMISSION OF BENDPAK INC. IS PROHIBITED.

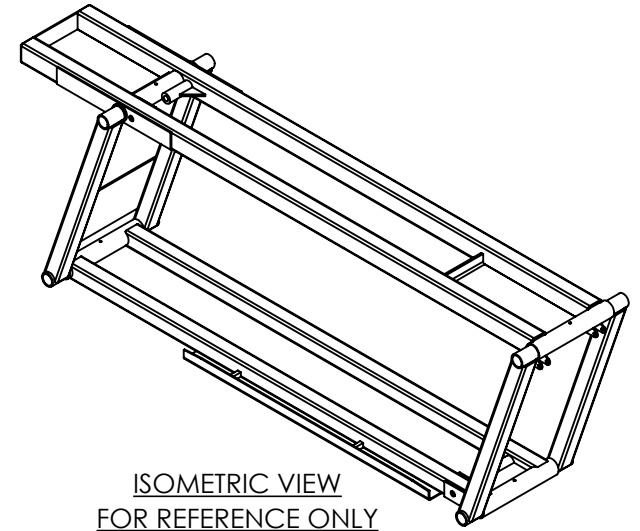
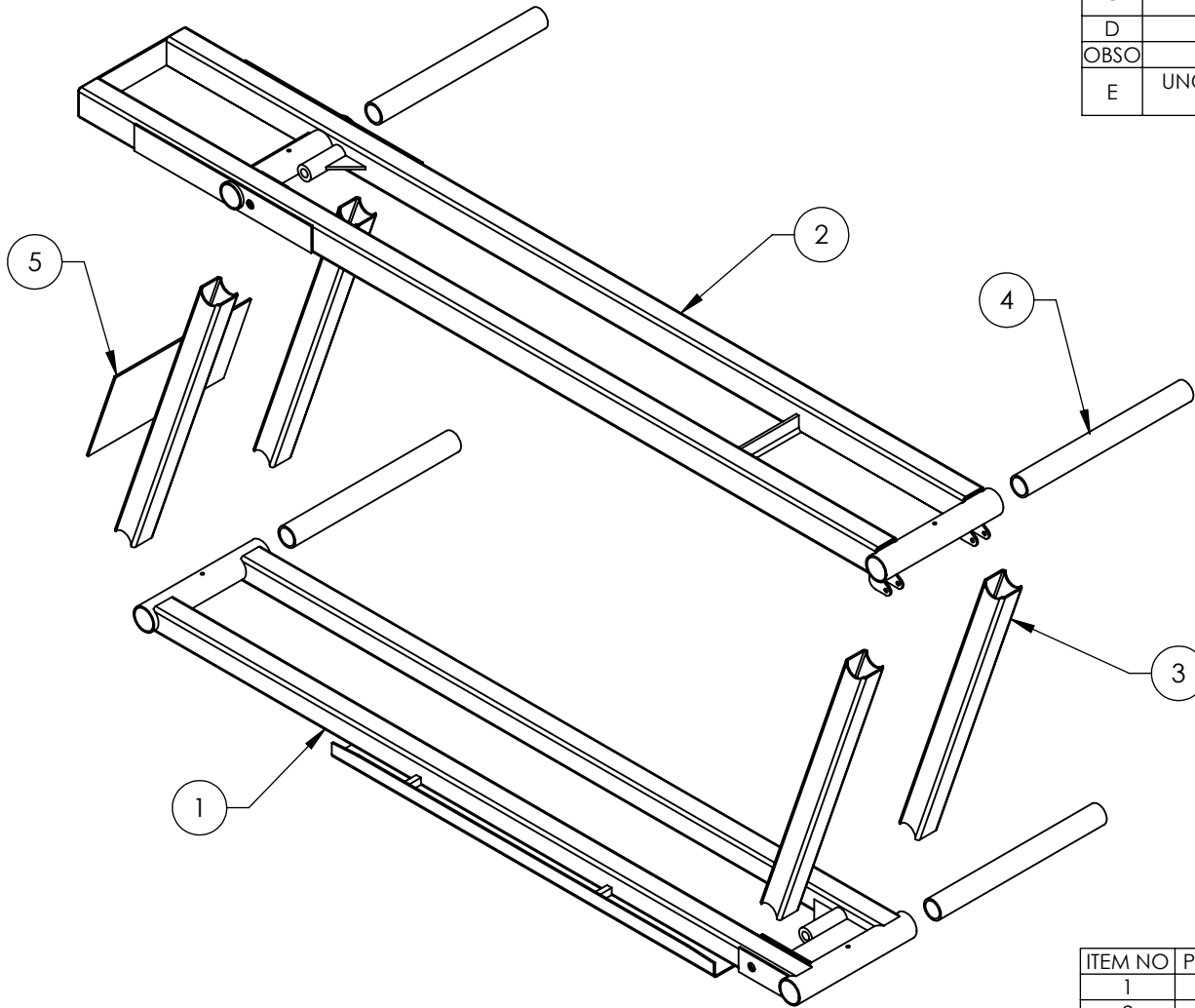
**BP BendPak**  
 1645 LEMONWOOD DR.  
 SANTA PAULA, CA 93060

TITLE: QUICKJACK SAFETY BAR ASSEMBLY

SIZE DWG. NO. REV  
**A** 5215918 B

SCALE: 1:3 SHEET 1 OF 1

REVISION				
REV	DESCRIPTION	DATE	EDITED BY	ECO#
C	UPDATED TITLE TO REFLECT MARKETING, UPDATED BOM REVISION	11/17/2020	CA	01237
D	UPDATED BOM REVISION	01/20/2021	TM	01265
OBSO	REPLACED WITH 5601756	11/11/2021	TM	01362
E	UNOBSOLETE FOR PRODUCTION, UPDATED BOM REVISIONS	03/14/2022	CA	01402



ISOMETRIC VIEW  
FOR REFERENCE ONLY  
DO NOT SCALE

ITEM NO	PART NUMBER	DESCRIPTION	QTY	REV
1	5620646	7000TL BOTTOM FRAME SUBWELDMENT, L.H.	1	D
2	5620647	7000TL TOP FRAME SUBWELDMENT	1	D
3	5766359	6000ELX/7000TL SCISSOR ARM TUBE	4	E
4	5746173	6000ELX/7000TL ARM HINGE AXLE	4	E
5	5735623	6000ELX/7000TL LOWER REAR GUSSET	1	D

WHERE USED
7000TL

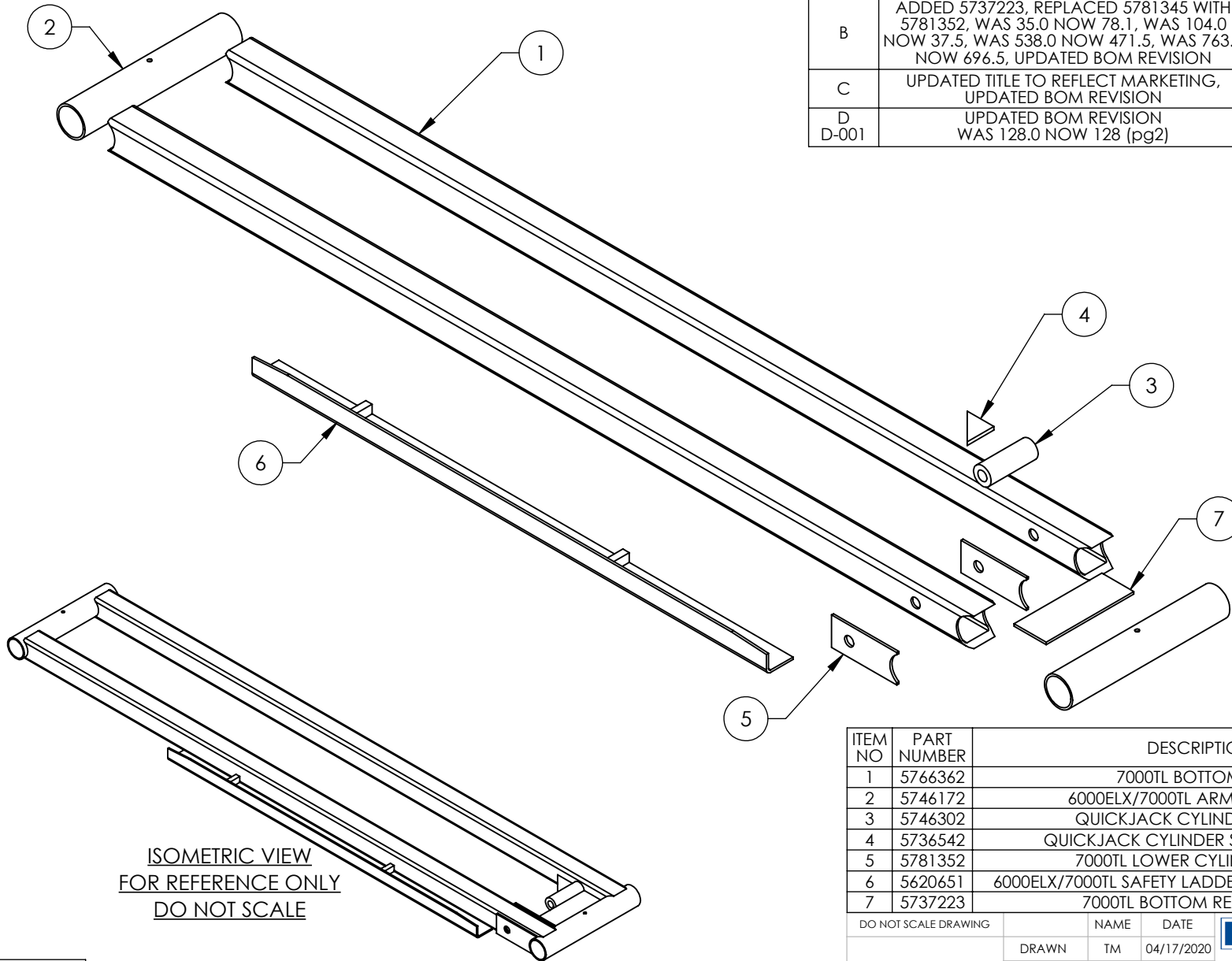
**NOTE: UNLESS OTHERWISE SPECIFIED.**

- REFER TO MODEL FOR ADDITIONAL INFORMATION
- BREAK AND DEBURR ALL SHARP EDGES 0.3mm
- REMOVE ALL WELD SPLATTER
- 5766359 MUST BE FREE TO ROTATE RELATIVE TO 5620646 AND 5620647
- DIMENSIONS SHOWN ARE AFTER PAINTING
- PAINT BLACK (RAL-9017) 20% GLOSS

NEXT ASSEMBLY  
5215919

DO NOT SCALE DRAWING	NAME	DATE	 1645 LEMONWOOD DR. SANTA PAULA, CA 93060
DIMENSIONS ARE IN MM TOLERANCES: 0. = ±1.5 0.0 = ±0.5	DRAWN	TM 04/17/2020	
	CHECKED		
SURFACE FINISH 1.6 ISO R <sub>a</sub> μm FOR MACHINED SURFACES UNLESS OTHERWISE SPECIFIED	THIRD ANGLE PROJECTION		TITLE:
			7000TL FRAME WELDMENT, L.H.
<small>PROPRIETARY AND CONFIDENTIAL THE INFORMATION CONTAINED IN THIS DRAWING IS THE SOLE PROPERTY OF BENDPAK INC. ANY REPRODUCTION IN PART OR AS A WHOLE WITHOUT THE WRITTEN PERMISSION OF BENDPAK INC. IS PROHIBITED.</small>		SIZE DWG. NO.	REV
		A 5601477	E
		SCALE: 1:10	SHEET 1 OF 2

REVISION				
REV	DESCRIPTION	DATE	EDITED BY	ECO#
B	ADDED 5737223, REPLACED 5781345 WITH 5781352, WAS 35.0 NOW 78.1, WAS 104.0 NOW 37.5, WAS 538.0 NOW 471.5, WAS 763.0 NOW 696.5, UPDATED BOM REVISION	10/27/2020	TM	01222
C	UPDATED TITLE TO REFLECT MARKETING, UPDATED BOM REVISION	11/17/2020	CA	01237
D	UPDATED BOM REVISION	01/25/2021	TM	01265
D-001	WAS 128.0 NOW 128 (pg2)	05/26/2021	OR	01304



ISOMETRIC VIEW  
FOR REFERENCE ONLY  
DO NOT SCALE

ITEM NO	PART NUMBER	DESCRIPTION	QTY	REV
1	5766362	7000TL BOTTOM TUBE	2	C
2	5746172	6000ELX/7000TL ARM HINGE TUBE	2	E
3	5746302	QUICKJACK CYLINDER SPACER	1	D
4	5736542	QUICKJACK CYLINDER SPACER GUSSET	1	E
5	5781352	7000TL LOWER CYLINDER PLATE	2	B
6	5620651	6000ELX/7000TL SAFETY LADDER SUBWELDMENT, L.H.	1	B
7	5737223	7000TL BOTTOM REAR GUSSET	1	B

WHERE USED
7000TL

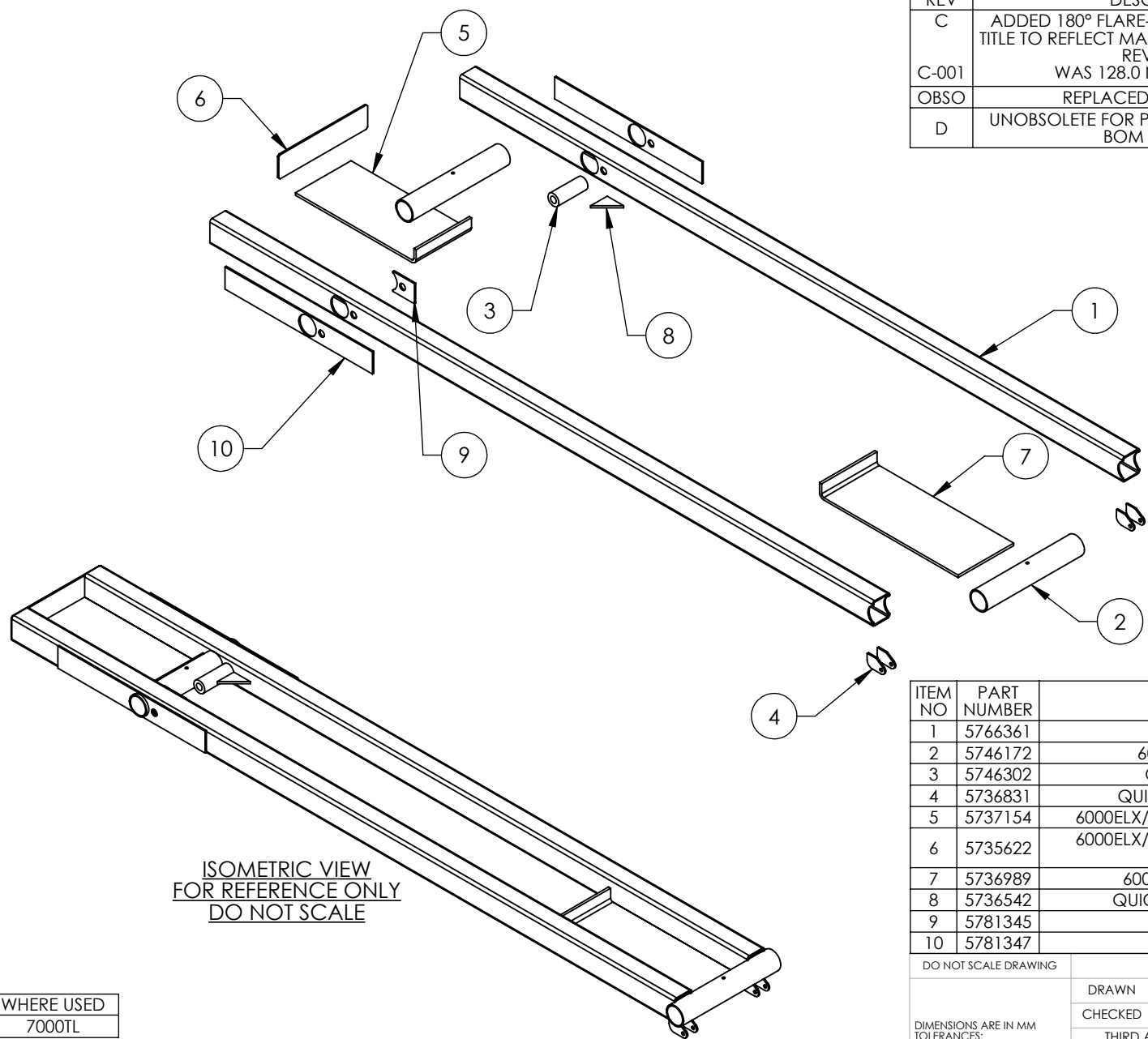
**NOTE: UNLESS OTHERWISE SPECIFIED.**

- REFER TO MODEL FOR ADDITIONAL INFORMATION
- BREAK AND DEBURR ALL SHARP EDGES 0.3mm
- REMOVE ALL WELD SPLATTER

NEXT ASSEMBLY  
5601477

DO NOT SCALE DRAWING	NAME	DATE	 1645 LEMONWOOD DR. SANTA PAULA, CA 93060
DIMENSIONS ARE IN MM TOLERANCES: 0. = ±1.5 0.0 = ±0.5	DRAWN	TM 04/17/2020	
	CHECKED	OR 05/27/2021	
SURFACE FINISH 1.6 ISO R <sub>a</sub> μm FOR MACHINED SURFACES UNLESS OTHERWISE SPECIFIED	THIRD ANGLE PROJECTION		TITLE: 7000TL BOTTOM FRAME SUBWELDMENT, L.H.
			SIZE DWG. NO. REV <b>A</b> 5620646 D
<small>PROPRIETARY AND CONFIDENTIAL THE INFORMATION CONTAINED IN THIS DRAWING IS THE SOLE PROPERTY OF BENDPAK INC. ANY REPRODUCTION IN PART OR AS A WHOLE WITHOUT THE WRITTEN PERMISSION OF BENDPAK INC. IS PROHIBITED.</small>			SCALE: 1:6 SHEET 1 OF 2

REVISION				
REV	DESCRIPTION	DATE	EDITED BY	ECO#
C	ADDED 180° FLARE-BEVEL WELD, UPDATED TITLE TO REFLECT MARKETING, UPDATED BOM REVISIONS	12/01/2020	CA	01237
C-001	WAS 128.0 NOW 128 (pg2)	05/25/2021	OR	01304
OBSO	REPLACED WITH 5620757	1/11/2021	TM	01362
D	UNOBSOLETE FOR PRODUCTION, UPDATED BOM REVISION	03/14/2022	CA	01402



ITEM NO	PART NUMBER	DESCRIPTION	QTY	REV
1	5766361	7000TL TOP TUBE	2	D
2	5746172	6000ELX/7000TL ARM HINGE TUBE	2	E
3	5746302	QUICKJACK CYLINDER SPACER	1	D
4	5736831	QUICKJACK WHEEL MOUNTING PLATE	4	F
5	5737154	6000ELX/7000TL RUBBER BLOCK TRAY EXTENSION	1	C
6	5735622	6000ELX/7000TL RUBBER BLOCK TRAY EXTENSION CLOSEOUT	1	F
7	5736989	6000ELX/7000TL RUBBER BLOCK TRAY	1	E
8	5736542	QUICKJACK CYLINDER SPACER GUSSET	1	E
9	5781345	7000TL CYLINDER PLATE	1	C
10	5781347	7000TL TOP FRAME GUSSET	2	D

WHERE USED
7000TL

**NOTE: UNLESS OTHERWISE SPECIFIED.**

- REFER TO MODEL FOR ADDITIONAL INFORMATION
- BREAK AND DEBURR ALL SHARP EDGES 0.3mm
- REMOVE ALL WELD SPLATTER

NEXT ASSEMBLY
5601477
5601478

DO NOT SCALE DRAWING	NAME	DATE	
DIMENSIONS ARE IN MM TOLERANCES: 0. = ±1.5 0.0 = ±0.5	TM	04/17/2020	
SURFACE FINISH 1.6 ISO Ra µm FOR MACHINED SURFACES UNLESS OTHERWISE SPECIFIED	OR	03/16/2022	
THIRD ANGLE PROJECTION			
<small>PROPRIETARY AND CONFIDENTIAL THE INFORMATION CONTAINED IN THIS DRAWING IS THE SOLE PROPERTY OF BENDPAK INC. ANY REPRODUCTION IN PART OR AS A WHOLE WITHOUT THE WRITTEN PERMISSION OF BENDPAK INC. IS PROHIBITED.</small>			<b>BP BendPak.</b> 1645 LEMONWOOD DR. SANTA PAULA, CA 93060
TITLE:			7000TL TOP FRAME SUBWELDMENT
SIZE	DWG. NO.	REV	
A	5620647	D	
SCALE: 1:10			SHEET 1 OF 3

## PART SPECIFICATION FORM STANDARD

<b>BENDPAK Number:</b>	5900263
<b>MRP Description:</b>	QUICKJACK TL/TLX/ELX MANUAL, ENGLISH-FRENCH
<b>Date:</b>	09/29/2021
<b>ECO :</b>	---

### 1. Engineering Specification

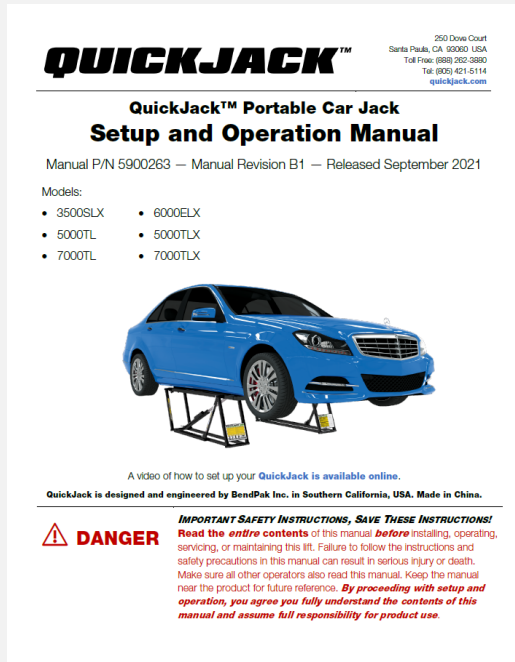
**Application:**  
INSTALLATION MANUAL

**Detailed Description:**

**Print Settings**

Unless otherwise specified, use these settings for printing BendPak manuals:

<b>Size:</b>	A4 (210 to 297 mm), 8.5 by 11 inches (216 to 279 mm), or between
<b>Color:</b>	Black and White
<b>Binding:</b>	Saddle Stitched
<b>Paper:</b>	100 to 120 gsm (27 to 32 pound), uncoated



### 2. Vendor Information (Or for Reference)

Approved Vendor	Vendor Part #	Contact #	Preferred Vendor
1)			
<b>OR BENDPAK ENGINEERING APPROVED EQUIVALENT</b>			

# Quickjack 7000L & TLX Product Labels

**A**

7000TL

NET FRAME WT EA.: 97.75 lbs | POIDS NET DU CADRE: 45.5 kg
MAX. CAPACITY / PAIR: 7,000 lbs | CAPACITE MAX. / PAIRE: 3,175 kg

**REMARK / DANGER CANNOT BE RESPONSIBLE FOR DAMAGE OR INJURY RESULTING FROM LACK OF MAINTENANCE OR UNSAFE USE OF THIS PRODUCT. READ AND UNDERSTAND ALL WARNINGS AND INSTRUCTIONS BEFORE USE.**

**REMARK / DANGER DECLINE TOUTE RESPONSABILITE POUR LES DEGRATS OU BLESSURES RESULTANT D'UN MANQUE D'ENTRETIEN OU D'UNE UTILISATION DANGEREUSE DE CE PRODUIT. LIRE ET COMPRENDRE TOUTES LES MISES EN GARDE ET INSTRUCTIONS AVANT UTILISATION.**

**IMPORTANT OPERATION INSTRUCTIONS:**

- Use on hard leveled floor surface **ONLY**.
- **ALWAYS** check vehicle gross weight before attempting to use this equipment.
- **DO NOT** attempt to raise any load directly on the upper frame rails. Use only Rubber Contact Blocks to lift load. Rubber blocks **MUST** be in the Rubber Contact Trays.
- Visually inspect all components for damage prior to use. If any damage is found, **DO NOT USE THIS EQUIPMENT.**

**HYDRAULIC POWER SYSTEM WARNINGS:**

- All hose couplers **MUST** be correctly and completely fastened together before using this equipment or applying pressure.
- **NEVER ATTEMPT** to connect or disconnect hose couplers while hydraulic system is under pressure.
- Keep fittings clean and free of debris. Guard against dirt entering the system.
- Care must be taken to ensure that type of thread sealant does **NOT** enter the hydraulic system. Tape or thread sealant in fluid will impair fluid flow causing system malfunction.

**INSTRUCTIONS D'UTILISATION:**

- Utiliser **UNIQUEMENT** sur une surface de sol dure et nivelée.
- Vérifiez **TOUJOURS** les poids brut du véhicule avant d'essayer d'utiliser cet équipement.
- N'essayez **PAS** de soulever une charge directement sur les longerons supérieurs du cadre. Utilisez uniquement des Blocs de Contact en Caoutchouc pour soulever la charge. Les Blocs en Caoutchouc **DOIVENT** se trouver dans les Plateaux de Contact en Caoutchouc.
- Vérifiez visuellement le bon état de toutes les pièces avant utilisation. En cas de dommages, **NE PAS UTILISER CE MATRIEL.**

**MISES EN GARDE CONCERNANT L'ALIMENTATION:**

- Tous les coupleurs de tuyaux **DOIVENT** être correctement et complètement faits ensemble avant d'utiliser cet équipement ou d'appliquer une pression.
- **NE JAMAIS TENTER** de connecter ou de déconnecter les coupleurs de tuyaux lorsque le système hydraulique est sous pression.
- Gardez les raccords propres et exempts de débris. Protégez-vous contre la saleté pénétrant dans le système.
- Il faut veiller à ce que du ruban adhésif ou du produit d'étanchéité pour filetage ne pénètre **PAS** dans le système hydraulique. Du ruban adhésif ou du produit d'étanchéité pour filetage dans le liquide nuira à l'écoulement du fluide et entraînera un dysfonctionnement du système.

**WARNING**  
AVERTISSEMENT

Keep feet clear of jack frames while lowering.  
Gardez les pieds à l'écart des cadres de levage durant l'abaissement.

**WARNING**  
AVERTISSEMENT

Keep clear of pinch points when jack frames are moving.  
Se tenir à l'écart des points de serrage des cadres de levage lorsqu'ils sont en mouvement.

**CAUTION**  
MISE EN GARDE

Use vehicle manufacturer's jack frame lifting points.  
Utiliser les points de levage prévus sur le véhicule.

**SAFETY INSTRUCTIONS**  
CONSIGNES DE SECURITE

Read operation / safety manuals before using jack frames.  
Lire les manuels d'utilisation / de sécurité avant d'utiliser les cadres de levage.

**USE ONLY AS ILLUSTRATED**  
UTILISER UNIQUEMENT COMME SUR L'ILLUSTRATION

Rubber contact blocks / Blocs d'appui en caoutchouc.  
Upper frame rails / Rails supérieurs du cadre.  
Lower frame rails / Rails inférieurs du cadre.

**DO NOT attempt to lift any load on the upper frame rails. Use RUBBER CONTACT BLOCKS only.**  
**NE PAS ESSAYER** de soulever une charge quelconque sur les rails de cadres supérieurs. Utilisez uniquement des BLOCS DE CONTACT EN CAOUTCHOUC.

QuickJack™ products are protected by one or more patents in the United States, Europe, and other countries, including the following: USA Patent 07161545, China Patent ZL2014300289.3, www.quickjack.com, PN 050504

**7000TL\_Operation\_Inst-ENG-FRE-Right-Frame.pdf**

Trim: 9"W x 6.5"H

**Material: 4 Mil. Permanent White Adhesive Vinyl**

Ink: U.V. protected CMYK 4/C Process

Finish: Matte Overlaminated (No Gloss)

Print Process: Offset Lithography - 200 line-screen or 300 p.p.i. for digital

Lamination: Clear laminate non-glare medium matte over-laminated (No gloss) for abrasion, chemical, and ultra violet protection.

Use on 7000TL Right Frame ONLY

PN 5905693

**B**

7000TL

NET FRAME WT EA.: 97.75 lbs | POIDS NET DU CADRE: 45.5 kg
MAX. CAPACITY / PAIR: 7,000 lbs | CAPACITE MAX. / PAIRE: 3,175 kg

**REMARK / DANGER CANNOT BE RESPONSIBLE FOR DAMAGE OR INJURY RESULTING FROM LACK OF MAINTENANCE OR UNSAFE USE OF THIS PRODUCT. READ AND UNDERSTAND ALL WARNINGS AND INSTRUCTIONS BEFORE USE.**

**REMARK / DANGER DECLINE TOUTE RESPONSABILITE POUR LES DEGRATS OU BLESSURES RESULTANT D'UN MANQUE D'ENTRETIEN OU D'UNE UTILISATION DANGEREUSE DE CE PRODUIT. LIRE ET COMPRENDRE TOUTES LES MISES EN GARDE ET INSTRUCTIONS AVANT UTILISATION.**

**WARNING**

- Both frames are **NOT** interchangeable. Lock bars **MUST** be on the outside when lowering each frame.
- **ONLY** raise the frames with the weight of a vehicle on them.
- **DO NOT** lower vehicle to the ground if wheels are removed.
- **DO NOT** stop raising the frames until lock bars have passed the first locking position.

**SAFETY LOCK DEVICE**  
Confirm safety locks are engaged when platforms are raised.

**SAFETY IN LOCKED POSITION**  
(Release Cam raised - Lock Bar rising against Lock Block)

**POSITION VERROUILLÉE**  
(Barre de Verrouillage élevée - ressort appuyé contre le Bloc de Verrouillage)

**SAFETY NOT IN LOCKED POSITION**  
(Release Cam lowered)

**SECURITE PAS EN POSITION VERROUILLÉE**  
(Barre de Verrouillage baissée)

**SAFETY NOT IN LOCKED POSITION**  
(Release Cam raised)

**SECURITE PAS EN POSITION VERROUILLÉE**  
(Barre de Verrouillage élevée)

**AVERTISSEMENT**

- Les deux cadres **NE SONT PAS** interchangeables. Les barres de verrouillage **DOIVENT** être à l'extérieur lors de l'abaissement des cadres.
- Soulevez **UNIQUEMENT** les cadres avec le poids d'un véhicule sur eux.
- **NE PAS** abaisser le véhicule au sol si les roues sont délogées.
- **N'ARRÊTEZ PAS** de relever les cadres tant que les barres de verrouillage n'ont pas dépassé la première position de verrouillage.

**MÉCANISME DE VERROUILLAGE**  
Vérifiez que les verrous de sécurité sont engagés lorsque les plateformes sont soulevées.

**UTILISER TOUJOURS** des béquilles de sécurité auxiliaires ou des chandelles sous le véhicule lorsque le pont est relevé sur les deux cadres.
- **NE PAS** installer ou utiliser sur une surface avec 3° de pente ou plus.
- **NE JAMAIS** laisser le véhicule relevé à moins que les barres de verrouillage de sécurité ne soient engagées en position verrouillée.
- **NE COMPTEZ PAS** sur le système hydraulique pour supporter le poids total du véhicule.

**WARNING**  
AVERTISSEMENT

Keep feet clear of jack frames while lowering.  
Gardez les pieds à l'écart des cadres de levage durant l'abaissement.

**WARNING**  
AVERTISSEMENT

Keep clear of pinch points when jack frames are moving.  
Se tenir à l'écart des points de serrage des cadres de levage lorsqu'ils sont en mouvement.

**CAUTION**  
MISE EN GARDE

Use vehicle manufacturer's jack frame lifting points.  
Utiliser les points de levage prévus sur le véhicule.

**SAFETY INSTRUCTIONS**  
CONSIGNES DE SECURITE

Read operation / safety manuals before using jack frames.  
Lire les manuels d'utilisation / de sécurité avant d'utiliser les cadres de levage.

**USE ONLY AS ILLUSTRATED**  
UTILISER UNIQUEMENT COMME SUR L'ILLUSTRATION

Rubber contact blocks / Blocs d'appui en caoutchouc.  
Upper frame rails / Rails supérieurs du cadre.  
Lower frame rails / Rails inférieurs du cadre.

**DO NOT attempt to lift any load on the upper frame rails. Use RUBBER CONTACT BLOCKS only.**  
**NE PAS ESSAYER** de soulever une charge quelconque sur les rails de cadres supérieurs. Utilisez uniquement des BLOCS DE CONTACT EN CAOUTCHOUC.

QuickJack™ products are protected by one or more patents in the United States, Europe, and other countries, including the following: USA Patent 07161545, China Patent ZL2014300289.3, www.quickjack.com, PN 050504

**7000TL\_Operation\_Inst-ENG-FRE\_Left-Frame.pdf**

Trim: 9"W x 6.5"H

**Material: 4 Mil. Permanent White Adhesive Vinyl**

Ink: U.V. protected CMYK 4/C Process

Finish: Matte Overlaminated (No Gloss)

Print Process: Offset Lithography - 200 line-screen or 300 p.p.i. for digital

Lamination: Clear laminate non-glare medium matte over-laminated (No gloss) for abrasion, chemical, and ultra violet protection.

Use on 7000TL Left Frame ONLY

PN 5905824

**C**

7000TLX

NET FRAME WT EA.: 103 lbs | POIDS NET DU CADRE: 47 kg
MAX. CAPACITY / PAIR: 7,000 lbs | CAPACITE MAX. / PAIRE: 3,175 kg

**REMARK / DANGER CANNOT BE RESPONSIBLE FOR DAMAGE OR INJURY RESULTING FROM LACK OF MAINTENANCE OR UNSAFE USE OF THIS PRODUCT. READ AND UNDERSTAND ALL WARNINGS AND INSTRUCTIONS BEFORE USE.**

**REMARK / DANGER DECLINE TOUTE RESPONSABILITE POUR LES DEGRATS OU BLESSURES RESULTANT D'UN MANQUE D'ENTRETIEN OU D'UNE UTILISATION DANGEREUSE DE CE PRODUIT. LIRE ET COMPRENDRE TOUTES LES MISES EN GARDE ET INSTRUCTIONS AVANT UTILISATION.**

**IMPORTANT OPERATION INSTRUCTIONS:**

- Use on hard leveled floor surface **ONLY**.
- **ALWAYS** check vehicle gross weight before attempting to use this equipment.
- **DO NOT** attempt to raise any load directly on the upper frame rails. Use only Rubber Contact Blocks to lift load. Rubber blocks **MUST** be in the Rubber Contact Trays.
- Visually inspect all components for damage prior to use. If any damage is found, **DO NOT USE THIS EQUIPMENT.**

**HYDRAULIC POWER SYSTEM WARNINGS:**

- All hose couplers **MUST** be correctly and completely fastened together before using this equipment or applying pressure.
- **NEVER ATTEMPT** to connect or disconnect hose couplers while hydraulic system is under pressure.
- Keep fittings clean and free of debris. Guard against dirt entering the system.
- Care must be taken to ensure that type of thread sealant does **NOT** enter the hydraulic system. Tape or thread sealant in fluid will impair fluid flow causing system malfunction.

**INSTRUCTIONS D'UTILISATION:**

- Utiliser **UNIQUEMENT** sur une surface de sol dure et nivelée.
- Vérifiez **TOUJOURS** les poids brut du véhicule avant d'essayer d'utiliser cet équipement.
- N'essayez **PAS** de soulever une charge directement sur les longerons supérieurs du cadre. Utilisez uniquement des Blocs de Contact en Caoutchouc pour soulever la charge. Les Blocs en Caoutchouc **DOIVENT** se trouver dans les Plateaux de Contact en Caoutchouc.
- Vérifiez visuellement le bon état de toutes les pièces avant utilisation. En cas de dommages, **NE PAS UTILISER CE MATRIEL.**

**MISES EN GARDE CONCERNANT L'ALIMENTATION:**

- Tous les coupleurs de tuyaux **DOIVENT** être correctement et complètement faits ensemble avant d'utiliser cet équipement ou d'appliquer une pression.
- **NE JAMAIS TENTER** de connecter ou de déconnecter les coupleurs de tuyaux lorsque le système hydraulique est sous pression.
- Gardez les raccords propres et exempts de débris. Protégez-vous contre la saleté pénétrant dans le système.
- Il faut veiller à ce que du ruban adhésif ou du produit d'étanchéité pour filetage ne pénètre **PAS** dans le système hydraulique. Du ruban adhésif ou du produit d'étanchéité pour filetage dans le liquide nuira à l'écoulement du fluide et entraînera un dysfonctionnement du système.

**WARNING**  
AVERTISSEMENT

Keep feet clear of jack frames while lowering.  
Gardez les pieds à l'écart des cadres de levage durant l'abaissement.

**WARNING**  
AVERTISSEMENT

Keep clear of pinch points when jack frames are moving.  
Se tenir à l'écart des points de serrage des cadres de levage lorsqu'ils sont en mouvement.

**CAUTION**  
MISE EN GARDE

Use vehicle manufacturer's jack frame lifting points.  
Utiliser les points de levage prévus sur le véhicule.

**SAFETY INSTRUCTIONS**  
CONSIGNES DE SECURITE

Read operation / safety manuals before using jack frames.  
Lire les manuels d'utilisation / de sécurité avant d'utiliser les cadres de levage.

**USE ONLY AS ILLUSTRATED**  
UTILISER UNIQUEMENT COMME SUR L'ILLUSTRATION

Rubber contact blocks / Blocs d'appui en caoutchouc.  
Upper frame rails / Rails supérieurs du cadre.  
Lower frame rails / Rails inférieurs du cadre.

**DO NOT attempt to lift any load on the upper frame rails. Use RUBBER CONTACT BLOCKS only.**  
**NE PAS ESSAYER** de soulever une charge quelconque sur les rails de cadres supérieurs. Utilisez uniquement des BLOCS DE CONTACT EN CAOUTCHOUC.

QuickJack™ products are protected by one or more patents in the United States, Europe, and other countries, including the following: USA Patent 07161545, China Patent ZL2014300289.3, www.quickjack.com, PN 050504

**7000TLX\_Operation\_Inst-ENG-FRE-Right-Frame.pdf**

Trim: 9"W x 6.5"H

**Material: 4 Mil. Permanent White Adhesive Vinyl**

Ink: U.V. protected CMYK 4/C Process

Finish: Matte Overlaminated (No Gloss)

Print Process: Offset Lithography - 200 line-screen or 300 p.p.i. for digital

Lamination: Clear laminate non-glare medium matte over-laminated (No gloss) for abrasion, chemical, and ultra violet protection.

Use on 7000TLX Right Frame ONLY

PN 5905694

IMPORTANT: Please use materials as instructed



# Quickjack 7000TL & TLX Product Labels

**D**

**QUICKJACK™ 7000TLX**

NET FRAME WT EA.: 103 lbs | POIDS NET DU CADRE: 47 kg      MAX. CAPACITY / PAIR: 7,000 lbs | CAPACITÉ MAX. / PAIRE: 3,175 kg

**WARNING** Both frames are NOT interchangeable. Lock bars MUST be on the outside when entering each frame. ONLY raise the frames with the weight of a vehicle on them. DO NOT lower vehicle to the ground if wheels are removed. DO NOT stop raising the frames until lock bars have passed the first locking position.

**SAFETY LOCK DEVICE** Confirm safety locks are engaged when platforms are raised.

**SAFETY IN LOCKED POSITION** Release Cam raised - Lock Bar resting against Lock Block.

**POSITION VERROUILLÉE** Came de Déplacement élevé - Barre de Verrouillage reposant contre Cale de Verrouillage.

**SAFETY NOT IN LOCKED POSITION** Release Cam lowered.

**SÉCURITÉ PAS EN POSITION VERROUILLÉE** Came de Déplacement baissé.

**MÉCANISME DE VERROUILLAGE** Vérifiez que les verrous de sécurité sont engagés lorsque les plates-formes sont soulevées.

**SAFETY NOT IN LOCKED POSITION** Release Cam raised.

**SÉCURITÉ PAS EN POSITION VERROUILLÉE** Came de Déplacement élevé.

Diagrams show the lock bar, release cam, and lock block in both raised and lowered positions.

CE      QuickJack™ products are protected by one or more patents in the United States, Europe, and other countries, including the following: USA Patent 6716,515, China Patent ZL2014306583.X. Les produits QuickJack™ sont protégés par un ou plusieurs brevets aux États-Unis, en Europe et dans d'autres pays: brevet américain 6716,515, brevet ZL2014306583.X en Chine.      www.quickjack.com      PN 5905425

7000TLX\_Operation\_Inst-ENG-FRE-Left-Frame.pdf

Trim: 9"W x 6.5"H

Material: 4 Mil. Permanent White Adhesive Vinyl

Ink: U.V. protected CMYK 4/C Process

Finish: Matte Overlaminated (No Gloss)

Print Process: Offset Lithography - 200 line-screen or 300 p.p.i. for digital

Lamination: Clear laminate non-glare medium matte over-laminated (No gloss) for abrasion, chemical, and ultra violet protection.

**Use on 7000TLX Left Frame ONLY**

PN 5905825

**E**

**QUICKJACK™**

P/N 5905745

QuickJack Cylinder Decal

PN 5905745

Material: Clear Adhesive PET

**CLEAR ADHESIVE PET - DOES NOT PRINT YELLOW**

Trim: 14"W x 2"H

Thickness: 4 Mil

Finish: Matte overlaminated (No gloss)

Ink: U.V. protected, Opaque White

Print Process: Silk Screen, 85 line-screen (Yellow color in file represents what should be clear PET material and SHOULD NOT print as Yellow ink. White area in file represents Opaque White ink.)

Lamination: Clear laminate non-glare medium matte over-laminated (No gloss) for abrasion, chemical, and ultra violet protection.

**F**

**WARNING** SAFETY LOCK DEVICE Confirm safety locks are engaged when platforms are raised. **AVERTISSEMENT** MÉCANISME DE VERROUILLAGE Vérifiez que les verrous de sécurité sont engagés lorsque les plates-formes sont soulevées.

Diagrams show the safety lock device and the locking mechanism.

QuickJack Safety Bar Warning-ENG/FRE

PN 5905428

Trim: 14"W x 0.625"H

Material: 4 Mil. Permanent White Adhesive Vinyl

Ink: U.V. protected CMYK 4/C Process

Finish: Matte Overlaminated (No Gloss)

Print Process: Offset Lithography - 200 line-screen or 300 p.p.i. for digital

Lamination: Clear laminate non-glare medium matte over-laminated (No gloss) for abrasion, chemical, and ultra violet protection.

**G**

**CAUTION** KEEP HANDS CLEAR OF PINCH POINTS. DO NOT ATTEMPT TO LIFT ANY LOAD ON UPPERFRAME RAILS. USE RUBBER CONTACT BLOCKS ONLY. **ATTENTION** TENIR LES MAINS À L'ÉCART DES POINTS DE PINCEMENT. NE PAS TENTER DE LEVER DES CHARGES PAR LES RAILS SUPÉRIEURS DU CADRE. UTILISER LES CALES D'APPUY EN CAOUTCHOUC.

QuickJack Pinch Points-ENG/FRE

PN 5905429

Trim: 15"W x 0.625"H

Material: 4 Mil. Permanent White Adhesive Vinyl

Ink: U.V. protected CMYK 4/C Process

Finish: Matte Overlaminated (No Gloss)

Print Process: Offset Lithography - 200 line-screen or 300 p.p.i. for digital

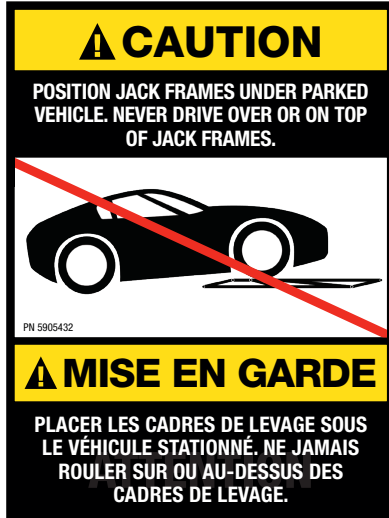
Lamination: Clear laminate non-glare medium matte over-laminated (No gloss) for abrasion, chemical, and ultra violet protection.

**IMPORTANT: Please use materials as instructed**



# Quickjack 7000TL & TLX Product Labels

**H**



PN 5905432

**Caution Do Not Drive Over-ENG/FRE.pdf**

Trim: 3"W x 3.5"H

**Material: 4 Mil. Permanent White Adhesive Vinyl**

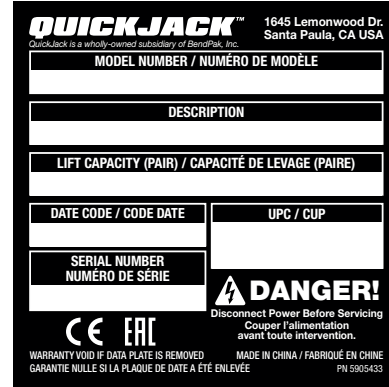
**Finish:** Matte overlamine (No gloss)

**Ink:** U.V. protected CMYK 4/C Process

**Print Process:** Offset Lithography - 200 line-screen or 300 p.p.i. for digital

**Lamination:** Clear laminate non-glare medium matte over-lamine (No gloss) for abrasion, chemical, and ultra violet protection.

**I**



PN 5905433

**Place on Left Frame Only**

**QuickJack Serial Tag-ENG/FRE**

Trim: 3"W x 3"H

**Material:** 2 Mil. Matte Silver Polyester (Flex-PSE)

*Print using thermal transfer printer with resin ribbon*

**J**



PN 5905434

**QuickJack Danger Air-ENG/FRE**

Trim: 5.5"W x 1.5"H

**Material: 4 Mil. Permanent White Adhesive Vinyl**

**Finish:** Matte Overlamine (No gloss)

**Ink:** U.V. protected CMYK 4/C Process

**Print Process:** Offset Lithography - 200 line-screen or 300 p.p.i. for digital

**Lamination:** Clear laminate non-glare medium matte over-lamine (no gloss) for abrasion, chemical, and ultra violet protection.

**K**



PN 5905438

**Max Capacity Label 7000 lbs-ENG/FRE**

Trim: 4.5"W x 1"H

**Material: 4 Mil. Permanent White Adhesive Vinyl**

**Ink:** U.V. protected CMYK 4/C Process

**Finish:** Matte Overlamine (No Gloss)

**Print Process:** Offset Lithography - 200 line-screen or 300 p.p.i. for digital

**Lamination:** Clear laminate non-glare medium matte over-lamine (No gloss) for abrasion, chemical, and ultra violet protection.

**L**



PN 5905036

**Caution Route Hose Under-ENG/FRE**

Trim: 10"W x 0.625"H

**Material: 4 Mil. Permanent White Adhesive Vinyl**

**Ink:** U.V. protected CMYK 4/C Process

**Finish:** Matte Overlamine (No Gloss)

**Print Process:** Offset Lithography - 200 line-screen or 300 p.p.i. for digital

**Lamination:** Clear laminate non-glare medium matte over-lamine (No gloss) for abrasion, chemical, and ultra violet protection.

**IMPORTANT: Please use materials as instructed**

# Quickjack 7000TL & TLX Label Placement

**M**

## CALIFORNIA PROPOSITION 65

### ⚠ WARNING ⚠

**WARNING!** This product can expose you to chemicals including styrene and vinyl chloride which are on the list of over 900 chemicals identified by the State of California to cause cancer, birth defects or reproductive harm. ALWAYS use this product in accordance with the manufacturer's instructions.

For more information, go to [www.p65warnings.ca.gov](http://www.p65warnings.ca.gov). PN 5905775

PN 5905775

Prop\_65\_Label.pdf:

Size: 1.5"W x 1.5"H

**Material: 4 Mil. Permanent White Adhesive Vinyl**

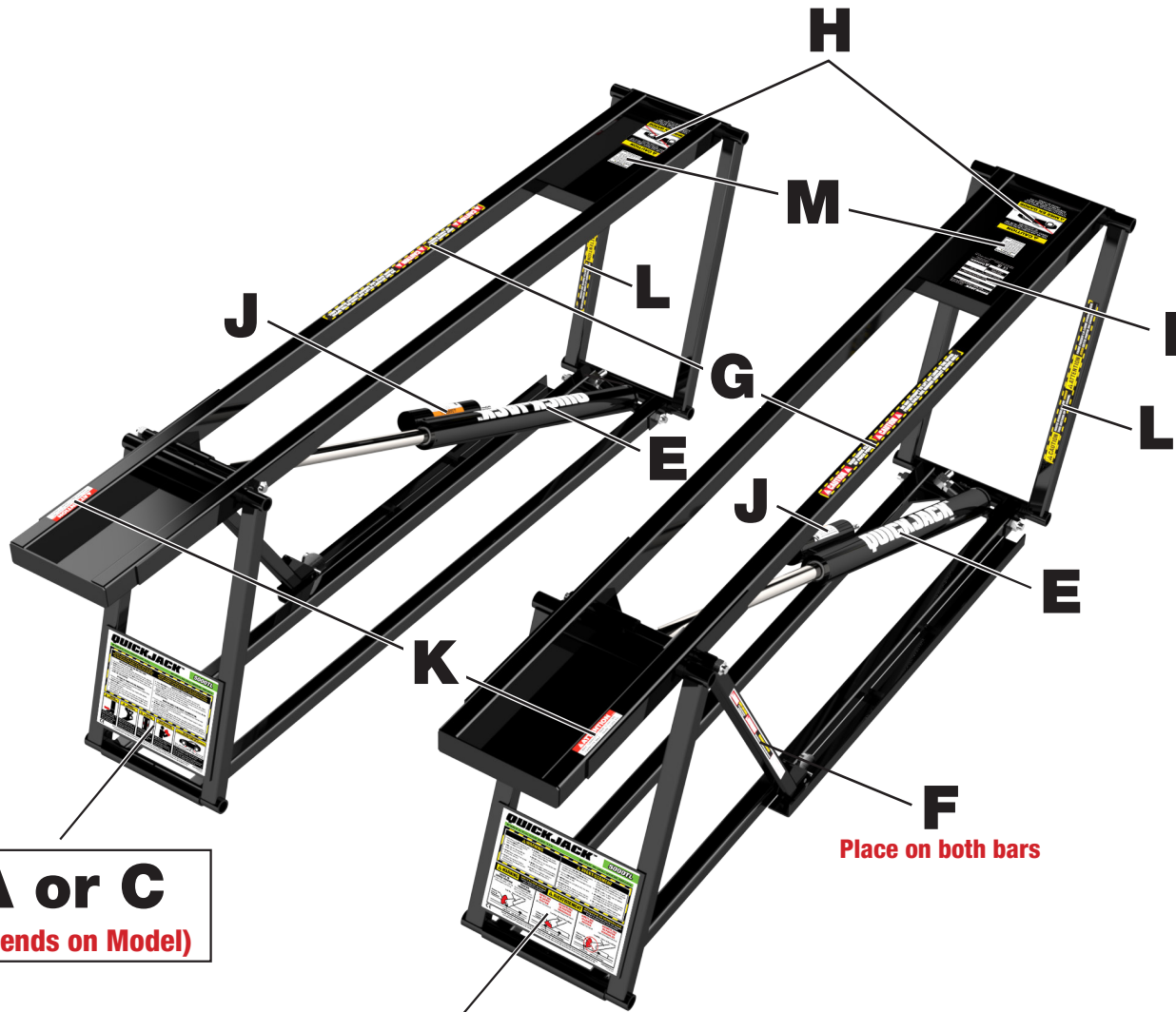
Ink: U.V. protected CMYK 2/C Process

Finish: Matte Overlaminat (No gloss)

Print Process: Offset Lithography - 200 line-screen or 300 p.p.i. for digital

Lamination: Clear laminate non-glare medium matte over-laminat (No gloss) for abrasion, chemical and ultra violet protection.

**Place on Both Frames**



**Place on both bars**

**A or C**  
(Depends on Model)

**B or D**  
(Depends on Model)

**IMPORTANT**

**MAKE SURE LABELS ARE READABLE FROM THE SAFETY LOCK BAR SIDE**

**IMPORTANT: Please use materials as instructed**