



# Angled Snow Pusher

## User Guide

Thank you for purchasing the Ivation® Angled Snow Pusher. This User Guide is intended to provide you with guidelines to ensure that operation of this product is safe and does not pose risk to the user. Any use that does not conform to the guidelines described in this User Guide may void the limited warranty.

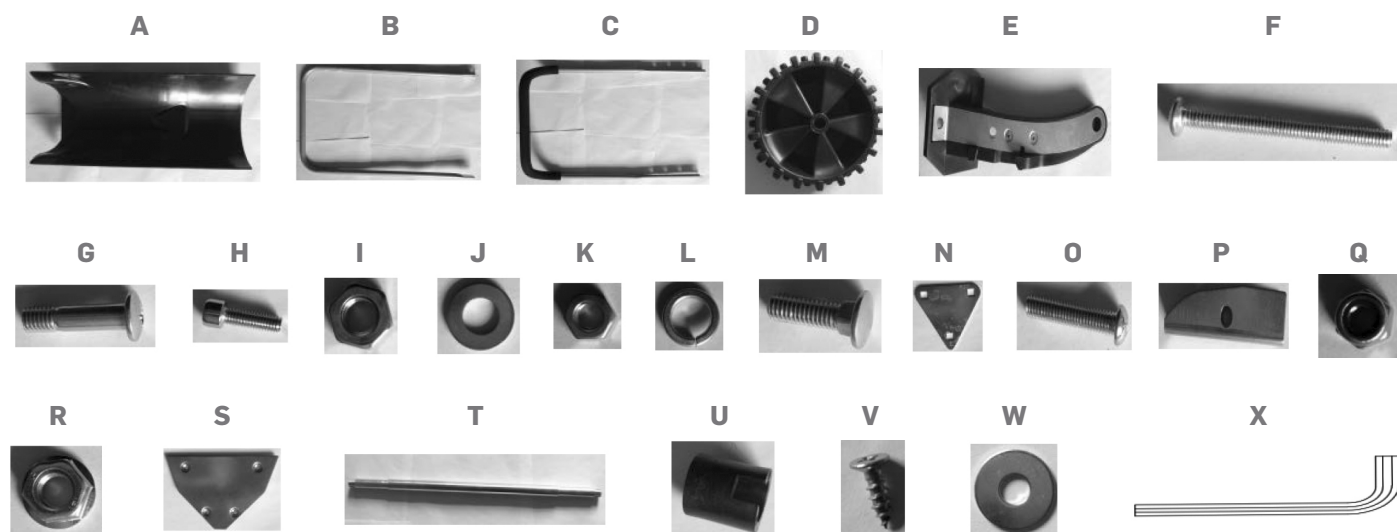
Please read all directions before using the product and retain this guide for reference. This product is intended for household use only.

This product is covered by a limited one-year warranty. Coverage is subject to limits and exclusions. See warranty for details.

### ASSEMBLY

You will need: Allen wrench (supplied), Phillips head screwdriver, wrench.

#### PARTS LIST:



#### TO ASSEMBLE

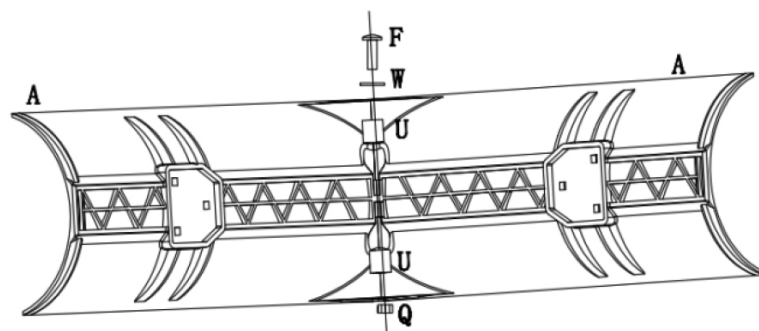
1. Attach the two sides of the blade:

Position the blades (A) so that they form a right angle.

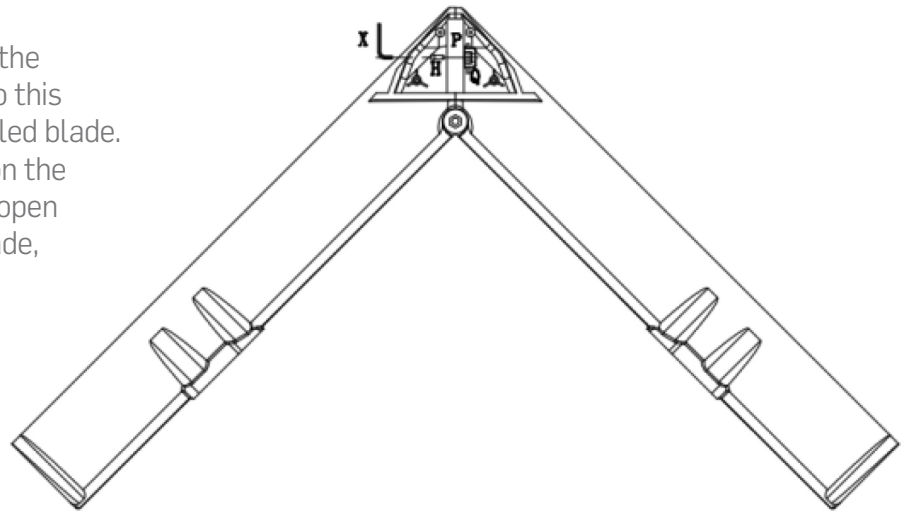
Locate the hole on the back of the joined blade, a few inches down from where the two blades meet at the top.

Press one black plastic tube (U) into each end of the hole, top and bottom, with the notched side of the tube facing down. Press down to secure.

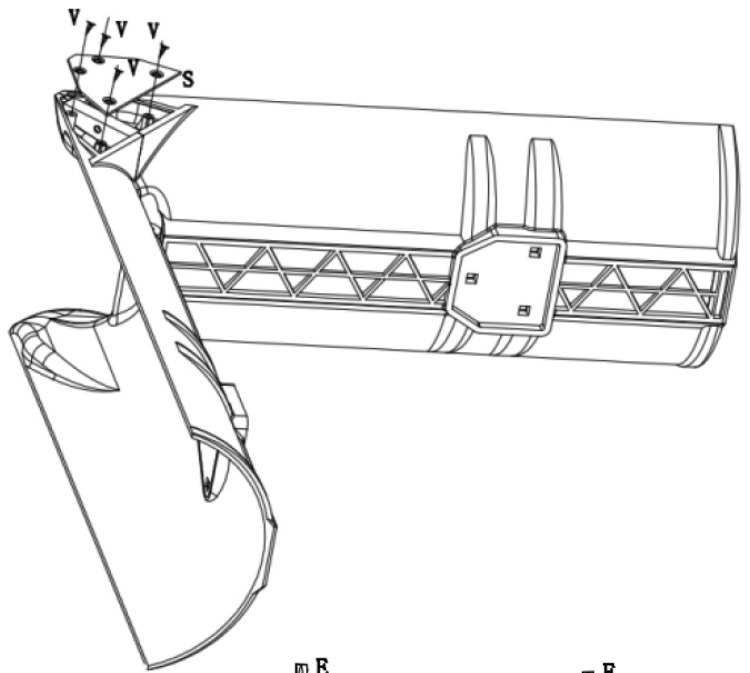
Using long screw (F) and washer (W) and bolt (Q), push the screw through the hole, secure with the washer and bolt, and tighten with a screwdriver.



Locate the two metal cuffs (P). Slide a cuff over the middle section of the top of the right angle so that it covers the seams. Do this on both sides (top and bottom) of the angled blade. Slide the Allen bolt (H) through the hole on the side of the cuff. Place lock nut (Q) on the open end of the bolt. Note: The wells on the blade, on each side of the cuff, are designed to accommodate the Allen bolt and lock nut in only one way. Tighten the bolt with the Allen wrench (X). Attach the other cuff to the opposite side of the blade using the same procedure.



Locate the 2 metal plates (S). Place a plate on the top and bottom of the right angle and fasten each plate with screws (V).

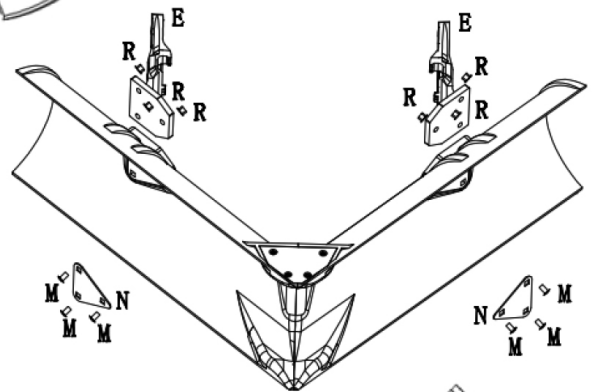


## 2. Attach arms:

Locate the 2 arms (E).

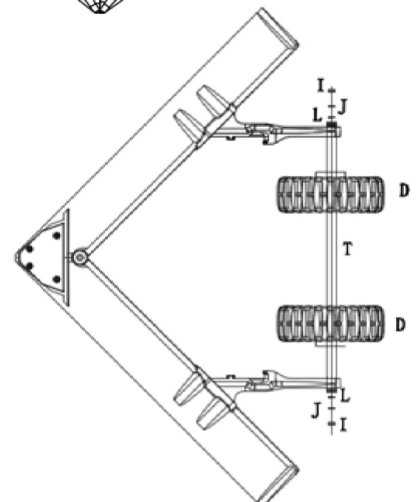
Position base of arm into the well on the back side of the blade. The metal brace should face inward.

Place triangular plate (N) on the inside of each blade, corresponding to the base of the arm on the opposite side. Attach arm base to the blade using 3 screws (M) and nuts (R) for each side of the angled blade.



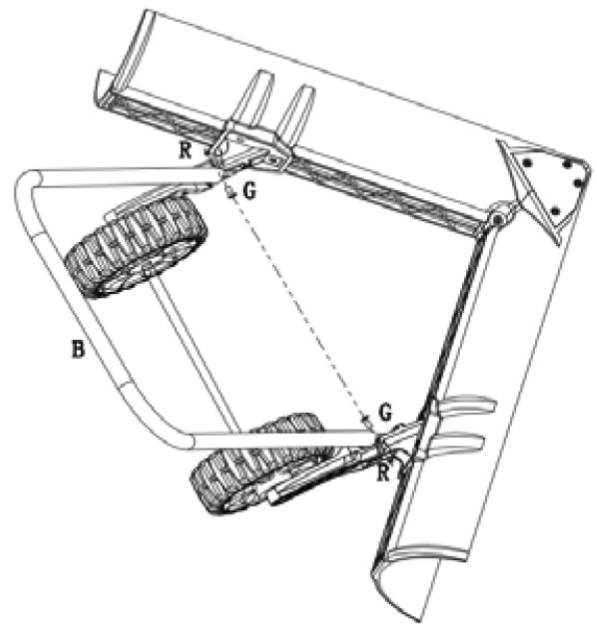
## 3. Attach Wheels:

Slide rod (Part T) through both wheels (Part D.) Attach rod to arms with J & L (washers) and bolts (I).



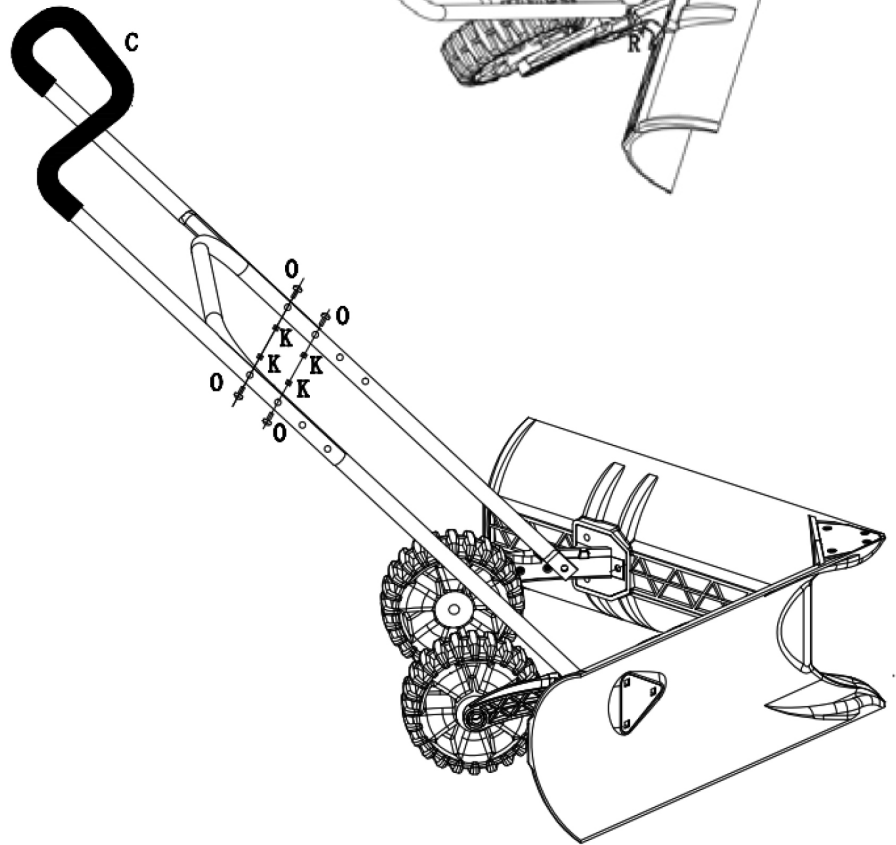
#### 4. Attach Handle:

Position blade so that the wheels touch the floor. Locate the notches on the top of each arm. Attach the metal, U-shaped bar (B), aligning holes to the holes in the arms, with screws (G) and bolts (R).



Attach upper part of handle using screws (O) and bolts (K).

You can increase or decrease the total length of the handle according to your preference. The sets of holes on the sides of the handle give you three height options.



This product is covered by a limited one-year warranty. Coverage is subject to limits and exclusions. See warranty for details.

#### Customer Service:

info@myivation.com

866-849-3049

Distributed by  
C&A Marketing  
114 Tived Lane East,  
Edison, NJ 08837

info@myivation.com

Made in China  
Ivation and the Ivation logo are registered  
trademarks of C&A IP Holdings, LLC. in the U.S.  
2017 All rights reserved