

TOOLMAN®



MODEL:DB5207

3/8In.Electric Drill

Instructions Manual

SAVE THIS MANUAL

You will need this manual for safety instructions, operating procedures and warranty.
Put it and the original sales receipt in a safe dry place for future reference.



MADE IN CHINA

SAVE THIS MANUAL

Your will need this manual for the safety instructions, assembly instructions, operating procedures, parts list, and diagram. Write your invoice number on the inside front cover. Put both your manual and invoice in a safe, dry place for future reference.

IMPORTANT SAFETY PRECAUTIONS

WARNING: When using electric tools, machines or equipment, basic safety precautions should always be followed to reduce the risk of fire, electric shock, and personal injury.

READ ALL INSTRUCTIONS BEFORE USING THIS TOOL

1. **KEEP WORK AREA CLEAN.** Cluttered areas invite injuries.
2. **CONSIDER WORK AREA CONDITIONS.** Don't use tools in damp, wet, or poorly lit locations. Don't expose to rain. Keep work area well lit. Don't use tools in the presence of flammable gases or liquids. Always make sure that a fire extinguisher is near at hand.
3. **KEEP CHILDREN AWAY.** All children should be kept away from the work area. Don't let them handle tool or extension cords.
4. **STORE IDLE EQUIPMENT.** When not in use, tool should be locked up in a dry location to inhibit rust. If possible, store in an area out of reach of children.
5. **DON'T FORCE THE TOOL.** It will do the job better and more safely at the rate for which it was intended.
6. **USE THE RIGHT TOOL.** Don't force a small tool or attachment to do the work of a larger industrial tool. Don't use a tool for a purpose for which it was not intended.
7. **DRESS PROPERLY.** Don't wear loose clothing or jewelry. They can be caught in moving parts. Protective, electrically non-conductive gloves and non-skid footwear are recommended when working. Wear protective hair covering to contain long hair, preventing it from getting caught in machinery.
8. **USE EYE AND EAR PROTECTION.** Use a full face mask if the work you're doing produces metal pieces, dust or wood chips. Goggles are acceptable in other situations. Wear a clean dust mask if the work creates a lot of fine or coarse dust. When operating for extended periods of time, use approved ear protection. Face masks, dust masks, safety goggles and ear protectors.
9. **DON'T ABUSE THE POWER CORD.** Do not yank it to disconnect it from receptacle. Do not move bench-mounted or floor-standing machines with the power cord in the outlet. Keep cord away from heat, oil, and sharp edges.

10. **SECURE WORK.** Use clamps or a vise to hold the work if possible. It's safer than using your hands and it frees both hands to operate the tool.
11. **DON'T OVERREACH.** Keep proper footing and balance at all times.
12. **MAINTAIN TOOLS WITH CARE.** Keep bits sharp and clean for better and safer performance.
Follow instructions for lubricating and changing accessories. Inspect tool cords periodically and if damaged, have them repaired by an authorized service facility. Keep handles dry, clean, and free from oil and grease.
13. **DISCONNECT POWER.** Unplug when not in use, before servicing, and when changing accessories such as blades, bits, and cutters.
14. **REMOVE ADJUSTING KEYS AND WRENCHES.** Make it a habit to check that keys and adjusting wrenches are removed from the tool or machine work surface before plugging it in.
15. **AVOID UNINTENTIONAL STARTING.** Be sure the switch is in the OFF position when not in use and before plugging in. Do not carry with your finger on the trigger.
16. **OUTDOOR EXTENSION CORDS.** When the equipment is operated outdoors, use only extension cords intended for outside use. See chart under "Extension Cords" for the proper AWG rating depending upon length of the cord.
17. **STAY ALERT.** Watch what you are doing, use common sense. Don't operate any tool when you are tired.
18. **CHECK DAMAGED PARTS.** Before using any tool, any part that appears damaged should be carefully checked to determine that it will operate properly and perform its intended function. Check for alignment of moving parts, binding of moving parts, breakage of parts, mounting, and other conditions that may affect its operation. Any part that is damaged should be properly repaired or replaced by an authorized service center unless otherwise indicated elsewhere in the instruction manual. Have defective switches replaced by an authorized service center. Don't use the tool if switch does not turn on and off properly.
19. **GUARD AGAINST ELECTRIC SHOCK.** Prevent body contact with grounded surfaces: pipes, radiators, ranges, and refrigerator enclosures.
20. **REPLACEMENT PARTS AND ACCESSORIES.** When servicing, use only identical replacement parts. Only use accessories intended for use with tool.
21. **DO NOT OPERATE TOOL IF UNDER THE INFLUENCE OF**

ALCOHOL OR DRUGS. Read warning labels on prescriptions to determine if your judgment or reflexes are impaired while taking drugs. If there is any doubt, do not operate machine.

22. **NEVER USE A TOOL IF ITS COVER OR ANY BOLTS ARE MISSING.** If the cover or bolts have been removed, replace them prior to use, Maintain all parts in good working order.

CLEAN UP SPILLS IMMEDIATELY. Keep floor clean and free of all fluids and other spills likely to cause slipping. Check material safety data sheets for proper clean-up procedures.

24. **DO NOT USE IF HOUSING BECOMES CRACKED OR BROKEN.** If this happens, the double insulation will be defeated and there will be a chance of injury due to electrocution. Replace broken housing before using.

STRUCURE AND FUNCTIONS

▢ JIZ-ZT series of electric drills are class II hand-held power tools with double-insulated structure.

The tools are driven by single-phase series motor. They are widely used for drilling a hole at metal, timber, plastics, etc. And they have the characteristics of small volume, light duty, big power, easy operation, safe and reliable. They are ideal tools of machine, vehicle, shipping, engineering installed, repairing and so on.

SPECIFICATIONS

Maximum Drilling Depth	13MM
Capacity	110/120V~50/60Hz
Electric Current(a)	5A
Rated Speed	0-3000rpm

ADDITIONAL SAFETY REGULATIONS

1. When fixing the bit, put the drill bit into the chuck and make sure that the bit is as far as it will go. Then tighten it very firmly with chuck key.
2. Don't wear gloves which may easily be caught.

3. Before operation, the tool should be checked, see whether the housing is crack or broken, the plug cord is in good order, the voltage is according with the demands, then turn on the switch and let the motor run idly for several minutes to make sure whether the tool can turn freely and properly.
4. Don't touch the bit when the process of workpiece is just finished, As at this time your hand may be burnt by the very hot bit
5. Don't put down your tool before its working-head stops rotating. When operation, hold the tool firmly with your both hands, and don't touch the metal parts of the tool to avoid electric shock in case that bit touches the inside hot-line wires.
7. keep your feet steady when you operate the tool in a high position and make sure that there is no other persons below.
8. Before operating the tool, do make sure that the chuck key has been put aside.
9. Keep the drill bit sharp always. The pressure should be properly, avoid over loading.
10. When operation, it is not allowed to point the tool at any body around you.
11. Regularly inspect all mounting screws and ensure that are properly tightened.

OPERATION REGULATIONS

• FIXING AND CHANGING DRILL BIT

When fixing drill bit, insert the bit into the chuck and tighten it with chuck key inserting in three holes on the chuck in turn. The length of drill bit which chucked by drill chuck must not less than $\frac{1}{3}$ of the general length. When dismantling the drill bit, put the chuck key into the holes of the chuck and loosen it.

• SWITCH ACTION

Pull the switch, the tool can start, release the switch, the tool will stop working. When you intend to have continuous operation, it is not necessary to pull and press the switch all the time, the lock-on button can provide such a continuous operation, pull the switch again, the tool will stop working.

Attention: before plugging the tool into the mains, check whether the switch is in good condition, If it doesn't function properly, repair it by a qualified expert please.

And make sure the switch is in off position before plugging the tool into the mains.

• OPERATION OF THE DRILL

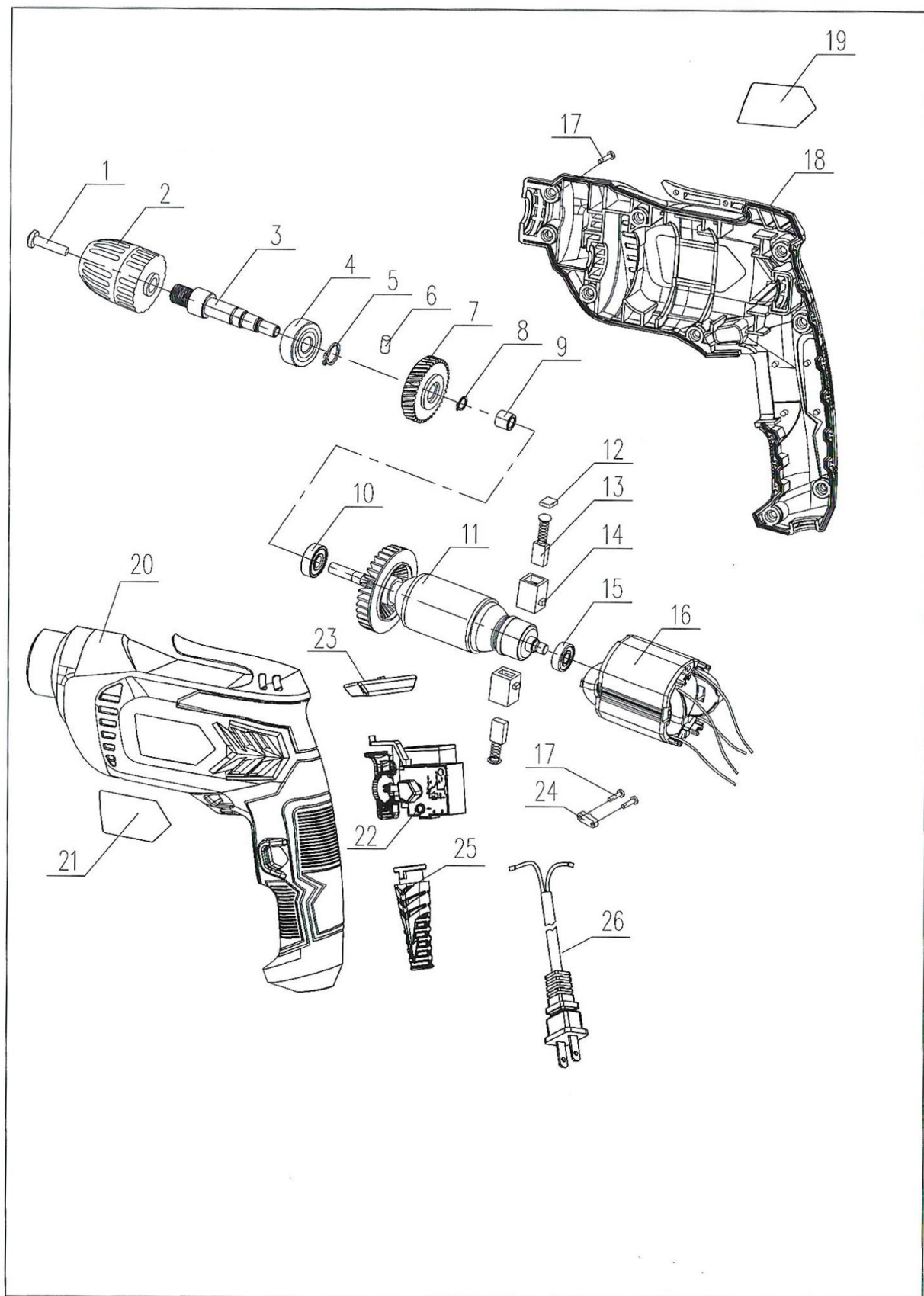
The pressure should be properly, the extra pressure could not

increase the work efficiency, it not only damages the tips of drill bits and decreases the efficiency of operation but also shortens the life of the drill.

As the drill bits are liable to break, it is important to decrease the pressure when the hole will be penetrated.

MAINTENANCE

- Inspect the carbon brushes regularly. The brushes need change when they are worn out at about less than 6mm. Keep the brushes clean and to be able to move and slide flexibly. Change the pair of brushes at the same time, then let the motor run idly for 15 minutes for well contact of the brushes and commutator. Before these, use a screwdriver to loosen the screws which fixed handle cover and remove the handle cover. Take care not to lose the two packings and nuts on the handle cover.
Pull out the brush holders together with the carbon brushes. Exercise adequate care not to excessively pull or damage the lead wire. Remove the carbon brushes from the brush holders. Insert the new carbon brushes into the brush holders, insert the brush holders together with the carbon brushes to the brush holder chambers in the housing.
Ensure that the lead wire and other parts are properly positioned and that there is no possibility of the lead wire coming in contact with the armature or other moving parts.
Ascertain that the handle cover is fitted with two packings. Reinstall the handle cover while ensuring that the internal wiring does not become pinched between the cover and the housing and secure the handle cover with the screws.
- Using the tool with over-worn bit may damage the motor of the tool and reduce efficiency. So it is necessary to change or sharpen the bit of the tool.
- When operation, if anything improper happens, the power supply should be cut off at once and the machine should be checked and repaired by a qualified expert:
 - (a). The armature gets stuck and the speed drops abnormally or the motor stops running suddenly.
 - (b). There are some abnormal noise and odour or the motor turns too hot.
 - (c). Heavy sparks occur or ring sparks occur.
- After operation the tool, clean the tool in please.
And the air-vent of the tool should be cleaned regularly to avoid the motor too hot due to the air-vent blocked.



1	screw
2	Chuck
3	Shaft of the gear
4	Bearing
5	Gasret of spindle
6	Columnar pin
7	Big gear
8	Gasret of spindle
9	Ball bearing
10	Bearing
11	Rotor
12	Carbon brush cover
13	Brush
14	Carbon brush bolder
15	Bearing
16	Stator
17	screw
18	Right house
19	Plastic brand
20	Left house
21	Label
22	Switch
23	Switch push button
24	Wire holder
25	Wire sheething
26	Wire and pluy