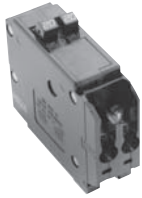


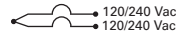
CTL Plug-On Circuit Breakers, Type BD Duplex, BQ and BQC Quadplex—10 kAIC, 120/240 Vac

Class CTL, 1-Inch (25.4 mm) per Pole 10 kAIC—All Circuit Breakers Have Rejection Tab Feature

BD2020

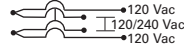


**Type BD Duplex
(UL Type BRD)**



Single-Pole ①
Requires One 1-Inch
(25.4 mm) Space
10 per Shelf Carton

**Type BQ Quadplex Independent Trip
(UL Type BRD)**



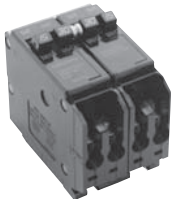
Two-Pole ② and Single-Pole ①
Requires Two 1-Inch
(25.4 mm) Spaces
5 per Shelf Carton

**Type BQ Quadplex Independent Trip
(UL Type BRD)**

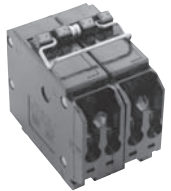


Two-Pole
Requires Two 1-Inch
(25.4 mm) Spaces
5 per Shelf Carton

BQ2302115



BQ230230



| Ampere Rating | Catalog Number | Wire Size Range Cu/Al 65 °C or 75 °C | Ampere Rating | | | Catalog Number | Ampere Rating | | |
|---------------|----------------|--|---------------------------|-------------------------------------|----------------------------|----------------|------------------------------------|-------------------------------------|----------------|
| | | | Outer Left Single-Pole | Center Two-Pole Independent Trip | Outer Right Single-Pole | | Outer Two-Pole Independent Trip | Center Two-Pole Independent Trip | Catalog Number |
| 10–10 | BD1010 | #14–4 | 15 | 20 | 15 | BQ2202115 | 15 | 15 | BQ215215 |
| 15–15 | BD1515 | #14–4 | 20 | 20 | 20 | BQ2202120 | 15 | 20 | BQ215220 |
| 15–20 | BD1520 | #14–4 | 15 | 30 | 15 | BQ2302115 | 15 | 30 | BQ215230 |
| 15–30 | BD1530 | #14–4 | 20 | 30 | 20 | BQ2302120 | 15 | 40 | BQ215240 |
| 20–15 | BD2015 | #14–4 | 15 | 40 | 15 | BQ2402115 | 15 | 50 | BQ215250 |
| 20–20 | BD2020 | #14–4 | 20 | 40 | 20 | BQ2402120 | 20 | 20 | BQ220220 |
| 20–30 | BD2030 | #14–4 | 15 | 50 | 15 | BQ2502115 | 20 | 30 | BQ220230 |
| 25–25 | BD2525 | #14–4 | 20 | 50 | 20 | BQ2502120 | 20 | 40 | BQ220240 |
| 30–15 | BD3015 | #14–4 | — | — | — | — | 20 | 50 | BQ220250 |
| 30–20 | BD3020 | #14–4 | — | — | — | — | 25 | 25 | BQ225225 |
| 30–30 | BD3030 | #14–4 | — | — | — | — | 30 | 30 | BQ230230 |
| 30–40 | BD3040 | #14–4 | — | — | — | — | 30 | 40 | BQ230240 |
| 30–50 | BD3050 | #14–4 | — | — | — | — | 30 | 50 | BQ230250 |
| 50–30 | BD5030 | #14–4 | — | — | — | — | 40 | 40 | BQ240240 |
| 50–50 | BD5050 | #14–4 | — | — | — | — | 40 | 50 | BQ240250 |
| — | — | — | — | — | — | — | 50 | 50 | BQ250250 |

Notes

- ① All 15 and 20 A single poles are switch-duty rated.
- ② All Type BD duplex and BQ quadplex circuit breakers carry listing for HACR applications.

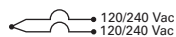
Non-CTL Plug-On Replacement—Circuit Breakers, Type BRD—10 kAIC, 120/240 Vac

BR2020

Class Non-CTL, 1-Inch (25.4 mm) per Pole 10 kAIC—Breakers Do Not Have Rejection Tab Feature

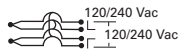


Type BR Duplex



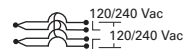
Single-Pole Requires One 1-Inch (25.4 mm) Space
10 per Shelf Carton

Type Brand BRD Quadplex Independent Trip



Two-Pole Requires Two 1-Inch (25.4 mm) Spaces
5 per Shelf Carton

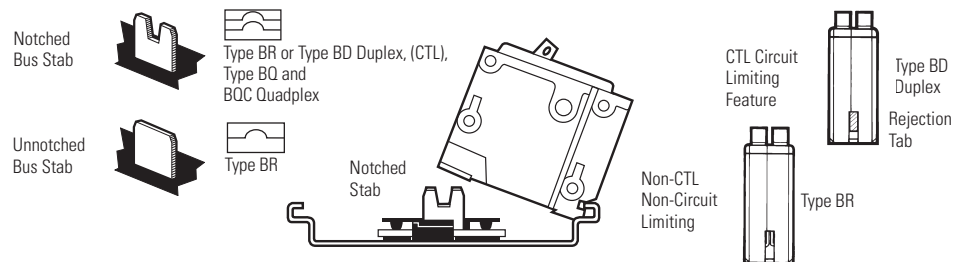
Type BRD Quadplex Common Trip Center and Outer Poles



Two-Pole Requires Two 1-Inch (25.4 mm) Spaces
5 per Shelf Carton

| Ampere Rating | Catalog Number | Wire Size Range Cu/Al 65 °C or 75 °C | 120/240 Vac | | Catalog Number | 120/240 Vac | | Catalog Number |
|---------------|----------------|--|---------------------------------|----------------------------------|----------------|----------------------------|-----------------------------|----------------|
| | | | Outer Two-Pole Independent Trip | Center Two-Pole Independent Trip | | Outer Two-Pole Common Trip | Center Two-Pole Common Trip | |
| 15–15 | BR1515 | #14–4 | 15 | 15 | BR415 | 15 | 15 | BRDC215215 |
| 15–20 | BR1520 | #14–4 | 20 | 20 | BR420 | 30 | 30 | BRDC230230 |
| 20–15 | BR2015 | #14–4 | 30 | 30 | BR430 | 30 | 40 | BRDC230240 |
| 20–20 | BR2020 | #14–4 | 20 | 30 | BRD220230 | 30 | 50 | BRDC230240 |
| 30–30 | BR3030 | #14–4 | 30 | 40 | BRD230240 | — | — | — |
| 30–50 | BR3050 | #14–4 | 30 | 50 | BRD230250 | — | — | — |

CTL and Non-CTL Breakers



Note

Type BD Duplex, BQ and BQC Quadplex circuit breakers can be installed in Circuit Limiting (CTL) listed BR loadcenters. Type BR twin breakers can be installed in Non-CTL BR loadcenters.