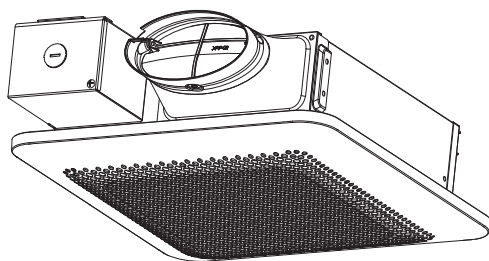
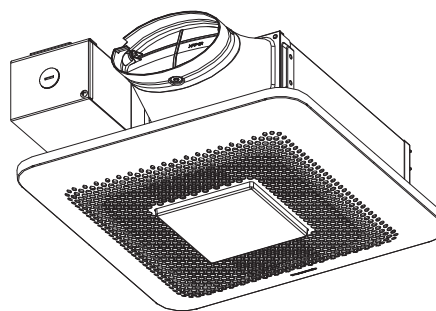


Service Manual

Ventilating Fan
(North America Market)



FV-0810RS1




FV-0810RSL1

WARNING

This service information is designed for experienced repair technicians only and is not designed for use by the general public. It does not contain warnings or cautions to advise non-technical individuals of potential dangers in attempting to service a product. Products powered by electricity should be serviced or repaired only by experienced professional technicians. Any attempt to service or repair the product or products dealt with in this service information by anyone else could result in serious injury or death.

IMPORTANT SAFETY NOTICE

There are special components used in this equipment which are important for safety. These parts are marked by  in the Schematic Diagrams, Exploded Views and Replacement Parts List. It is essential that these critical parts should be replaced with manufacturer's specified parts to prevent shock, fire or other hazards. Do not modify the original design without permission of manufacture. We suggest to handle such parts after the static electricity prevention. It is forbidden to touch the PCB parts by bare hands during the repairing process.

CONTENTS	PAGE
1.Specifications	1
2.Parts Identification.....	2~5
3.Wiring Diagram.....	6
4.Parts List.....	7~8

1. Specifications

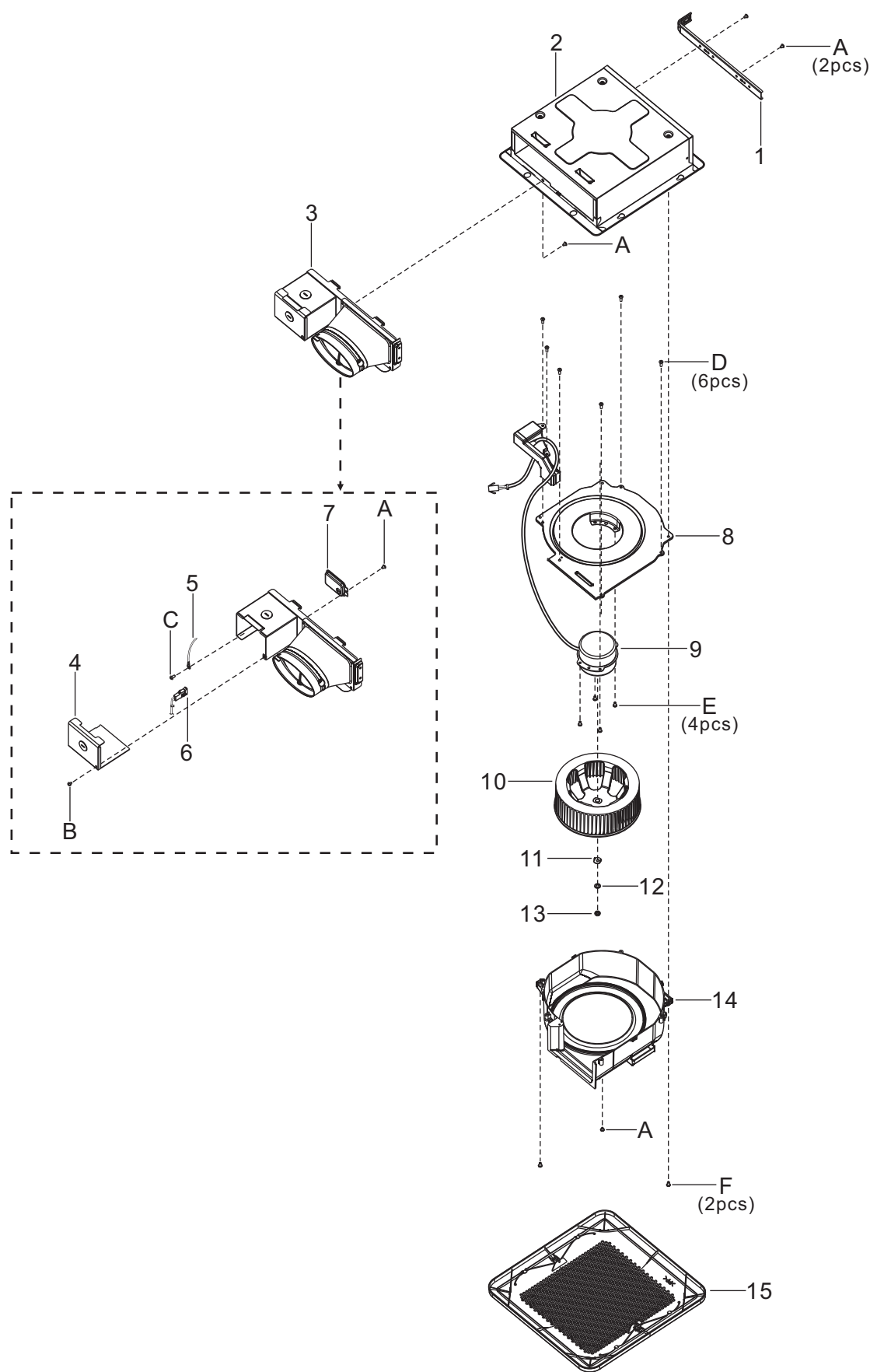
Model No.	Air direction	Voltage (V)	Frequency (Hz)	Duct diameter (inches)	Air volume at 0.1"WG (CFM)	Noise (sones)	Speed (rpm)	Power (W)	Weight lb.(kg)
FV-0810RS1	Exhaust	120	60	4	80	0.5	772	21.6	7.1(3.2)
					100	1.0	875	26.9	
FV-0810RSL1	Exhaust	120	60	4	80	0.5	800	22.1	7.7 (3.5)
					100	1.1	920	27.4	

HVI Certified performance based on HVI Procedures 915, 916 and 920.

2. Parts Identification

FV-0810RS1

Main Body Section



2. Parts Identification

FV-0810RS1

Main Labels



16

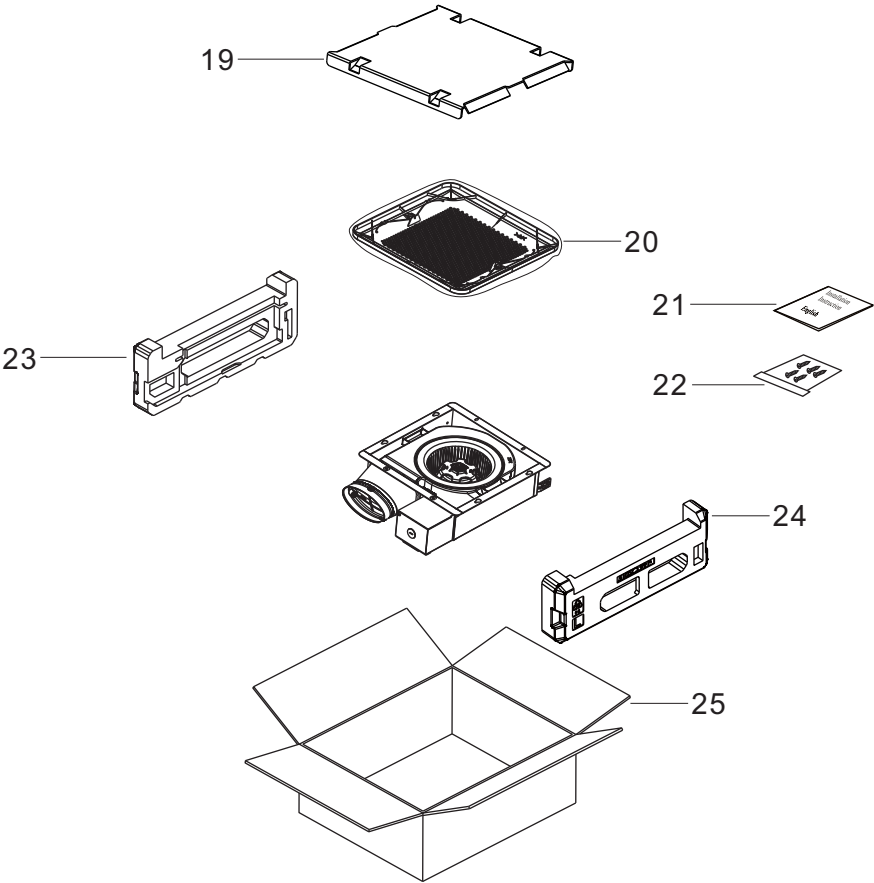


17



18

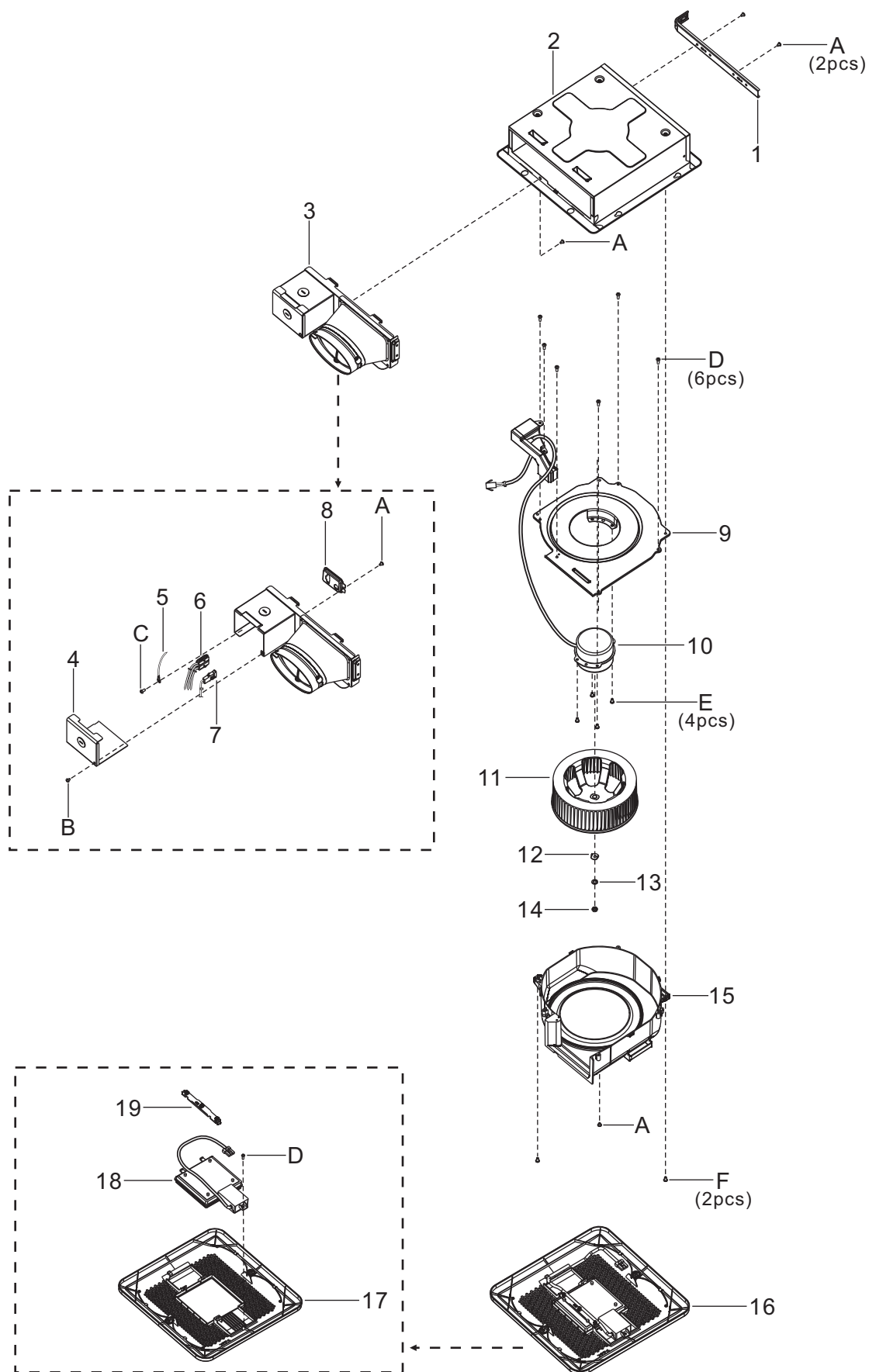
Packing Section



2. Parts Identification

FV-0810RSL1

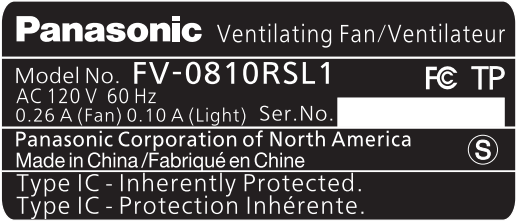
Main Body Section



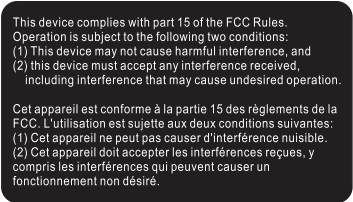
2. Parts Identification

FV-0810RSL1

Main Labels



20



23

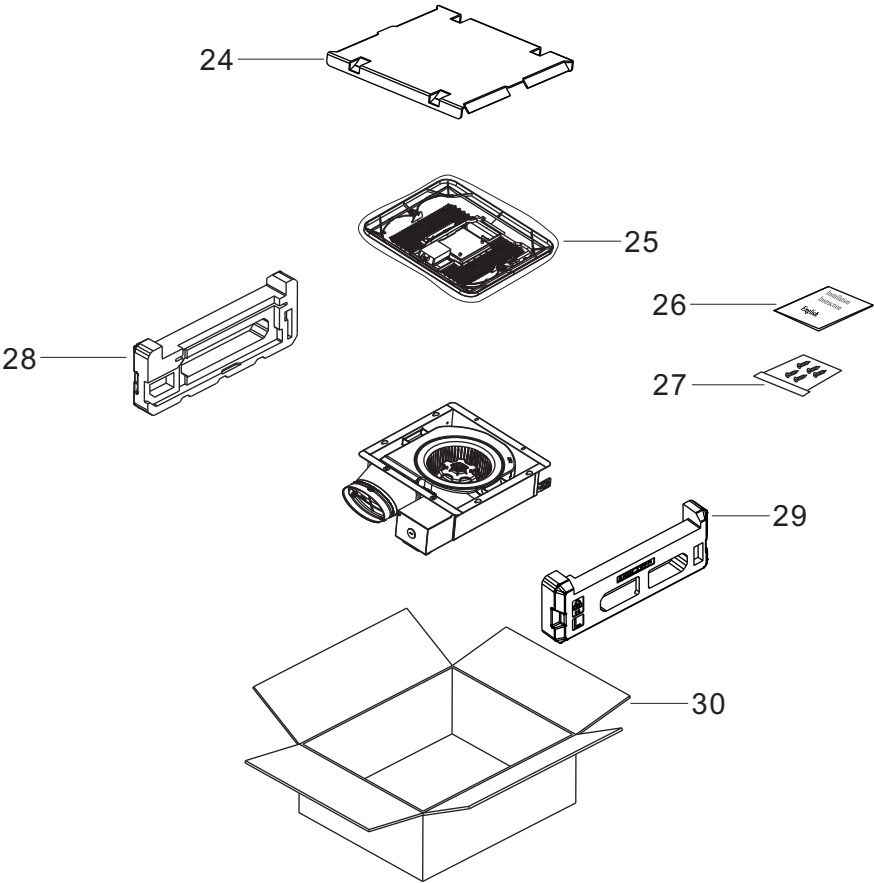


21



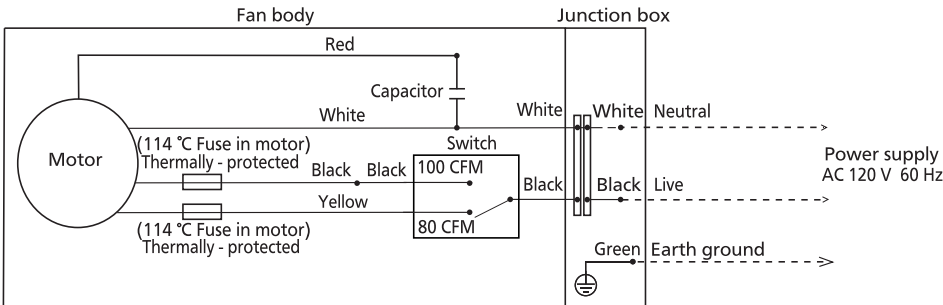
22

Packing Section

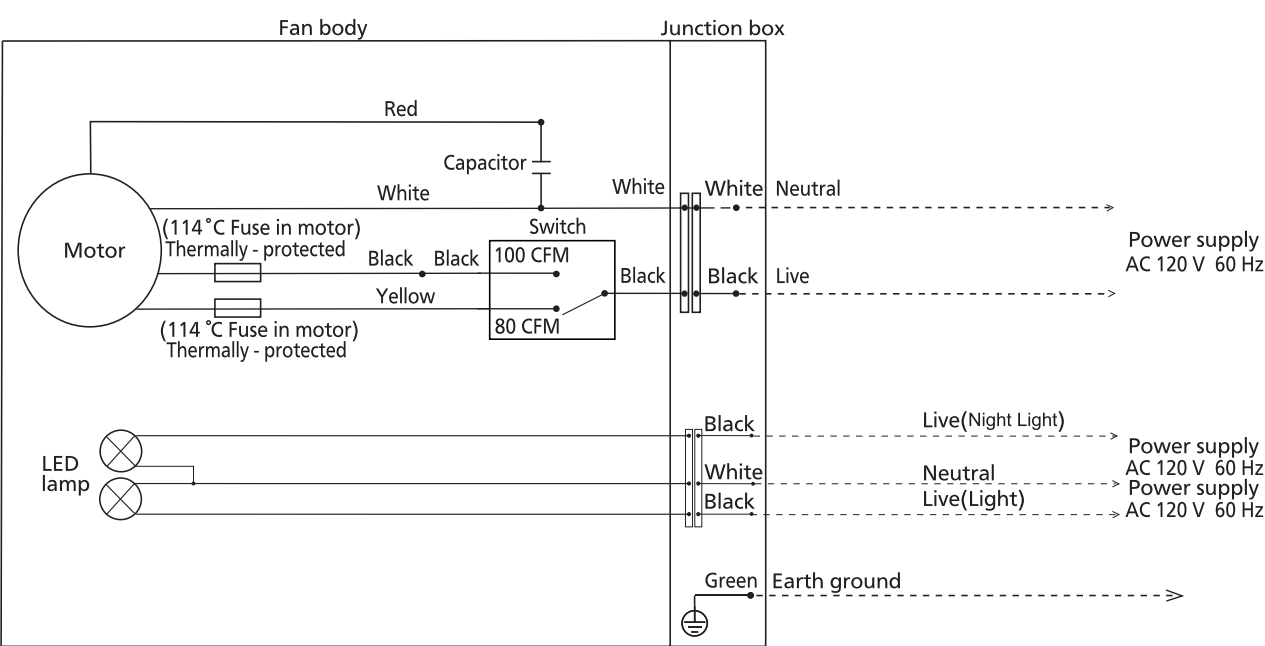


3. Wiring Diagram

FV-0810RS1



FV-0810RSL1



4. Parts List

— FV-0810RS1 —

Main Body Section

No.	Part No.	Part Name	Q'ty	Remark
1	FFV5710025S	Suspension Bracket	1	
2	FFV1600168S	Frame Assy	1	
3	FFV0000166S	Adapter Assy	1	⚠
4	FFV2800027S	Junction Cover	1	
5	FFV3450010S	Earth Lead Wire	1	⚠
6	FFV0900072S	Connector Assy (V)	1	⚠
7	FFV0900052S	Connector Plate	1	
8	FFV3700373S	Motor Support Unit	1	
9	FFV3700374S	Motor Unit	1	⚠
10	FFV0400112S	Blade	1	
11	FFV0400113S	Blade Fix Ring	1	
12	FFV7010058S	Undee Washer	1	
13	FFV7020024S	Hexagon Nut	1	
14	FFV0790128S	Casing Unit	1	
15	FFV3400159S	Louver Assy	1	
A	FFV7000108S	Truss Tap Screw	5	
B	FFV7000064S	Bind Screw	1	
C	FFV7000203S	Earth Screw Assy	1	Include Spring Washer ⚠
D	FFV7000089S	Truss Tap Screw	6	
E	FFV7000074S	Truss Tap Screw	4	
F	FFV7000080S	Plus Bind Screw	2	

Main Labels

No.	Part No.	Part Name	Q'ty	Remark
16	FFV4020945S	Name Plate	1	
17	FFV2260003S	UL Mark	1	
18	FFV0810011S	Caution Label 1	1	

Packing Section

No.	Part No.	Part Name	Q'ty	Remark
19	FFV4710381S	Louver Case Assy	1	
20	FFV4650016S	Poly Cover	1	
21	FFV2540231S	Installation Instructions	1	
22	FFV0010231S	Accessory A	1	
23	FFV4710431S	Right Pad	1	
24	FFV4710432S	Left Pad	1	
25	FFV9001389S	Packing Case Assy	1	

4. Parts List

FFV-0810RSL1

Main Body Section

No.	Part No.	Part Name	Q'ty	Remark
1	FFV5710025S	Suspension Bracket	1	
2	FFV1600168S	Frame Assy	1	
3	FFV0000173S	Adapter Assy	1	⚠
4	FFV2800027S	Junction Cover	1	
5	FFV3450010S	Earth Lead Wire	1	⚠
6	FFV0900069S	Connector Assy (L)	1	⚠
7	FFV0900072S	Connector Assy (V)	1	⚠
8	FFV0900074S	Connector Plate	1	
9	FFV3700373S	Motor Support Unit	1	
10	FFV3700374S	Motor Unit	1	⚠
11	FFV0400112S	Blade	1	
12	FFV0400113S	Blade Fix Ring	1	
13	FFV7010058S	Undee Washer	1	
14	FFV7020024S	Hexagon Nut	1	
15	FFV0790128S	Casing Unit	1	
16	FFV3400160S	Louver Section	1	⚠
17	FFV3400161S	Louver Unit	1	
18	FFV3400148S	Led Unit	1	⚠
19	FFV2520040S	Insulation Plate	1	
A	FFV7000108S	Truss Tap Screw	5	
B	FFV7000064S	Bind Screw	1	
C	FFV7000203S	Earth Screw Assy	1	Include Spring Washer ⚠
D	FFV7000089S	Truss Tap Screw	7	
E	FFV7000074S	Truss Tap Screw	4	
F	FFV7000080S	Plus Bind Screw	2	

Main Labels

No.	Part No.	Part Name	Q'ty	Remark
20	FFV4020946S	Name Plate	1	
21	FFV2260003S	UL Mark	1	
22	FFV0810011S	Caution Label 1	1	
23	FFV6730109S	FCC Label	1	

Packing Section

No.	Part No.	Part Name	Q'ty	Remark
24	FFV4710381S	Louver Case Assy	1	
25	FFV4650016S	Poly Cover	1	
26	FFV2540232S	Installation Instructions	1	
27	FFV0010231S	Accessory A	1	
28	FFV4710431S	Right Pad	1	
29	FFV4710432S	Left Pad	1	
30	FFV9001390S	Packing Case Assy	1	