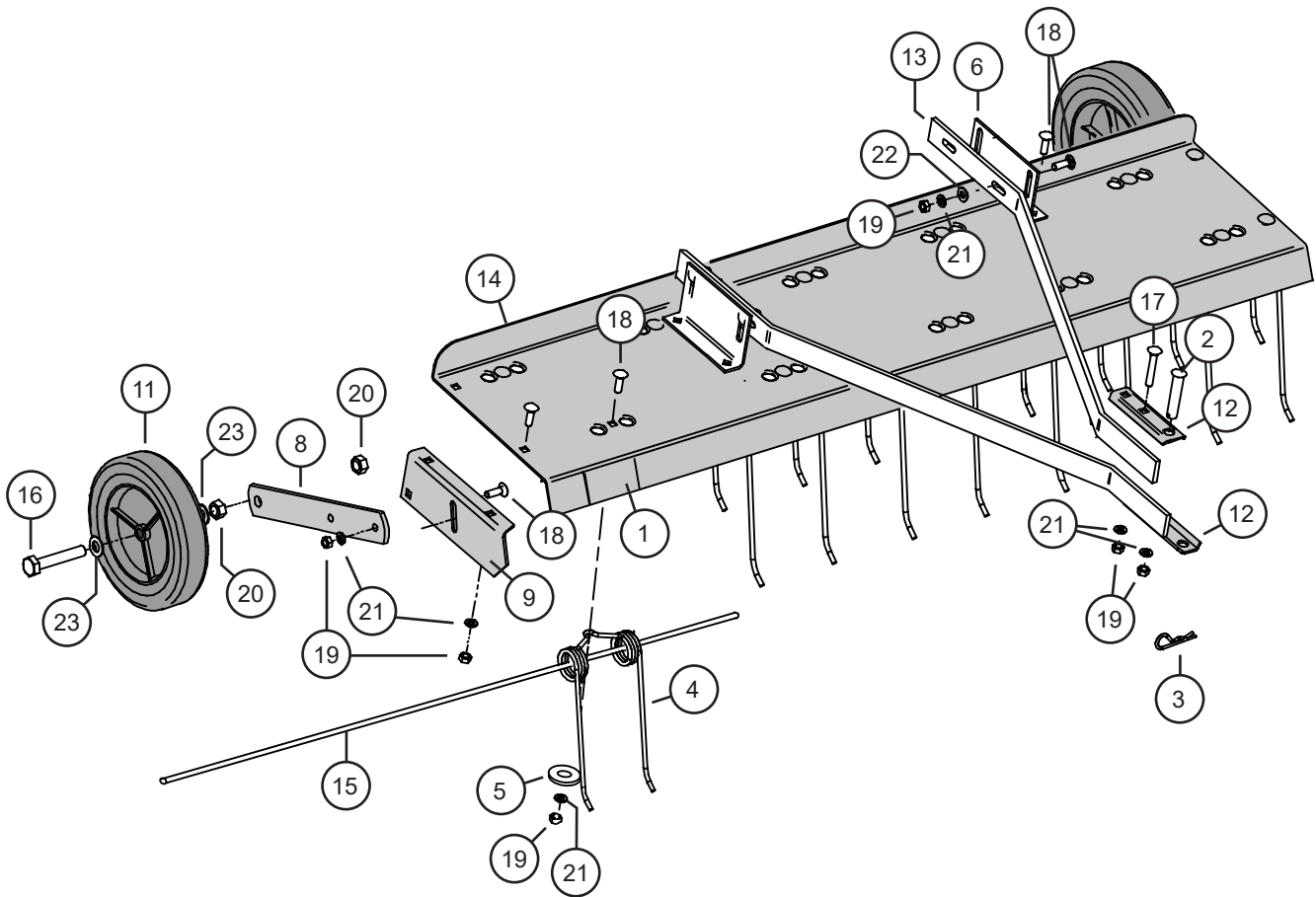


PARTS



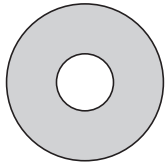
Ref #	Part #	Description	Qty	Ref #	Part #	Description	Qty
1	B-5925	Logo Decal	1	13	R-1455-10	Pull Bar	2
2	B-3861	Drawbar Pin	1	14	R-1456-1	Tine Tray with Decal	1
3	D-146P	Hairpin Cotter, 1/8"	1	15	R-1504	Safety Wire	2
4	R-616	Tine	12	16	1M1648P	Hex Head Bolt, 1/2" x 3"	2
5	R-618	Special Washer	12	17	10M1032P	Carriage Bolt, 5/16" x 2"	2
6	R-713-10	Tray Mount Bracket	2	18	11M1016P	Carriage Bolt, 5/16" x 1"	28
7	R-1541	Warning Decal	1	19	30M1000P	Hex Nut, 5/16"	30
8	R-2479-10	Wheel Mount Bracket	2	20	30M1600P	Hex Nut, 1/2"	4
9	R-889-10	End Plate (R.H.)	1	21	40M1000P	Lock Washer, 5/16"	30
10	R-890-10	End Plate (L.H.)	1	22	45M1111P	Flat Washer, 5/16"	4
11	R-891	Wheel	2	23	45M1717P	Flat Washer, 1/2"	4
12	R-892-10	Clevis	2				

HARDWARE IDENTIFIER

Illustrations on this page are to scale for faster identification of hardware during assembly.

DO NOT RETURN PRODUCT IF YOU ARE MISSING PARTS.

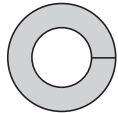
Please Call: 1 (877) 728-8224



5

Special Washer
(x12)

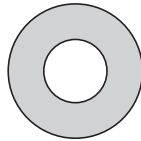
R-618



21

Washer;
Lock, 5/16"
(x30)

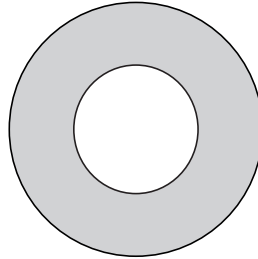
40M1000P



22

Washer;
Flat, 5/16"
(x4)

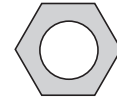
45M1111P



23

Washer;
Flat, 1/2"
(x4)

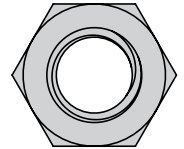
45M1717P



19

Nut;
Hex, 5/16"
(x30)

30M1000P



20

Nut;
Hex, 1/2"
(x4)

30M1600P

2

Drawbar Pin, 1/2" x 2 1/2" (x1)

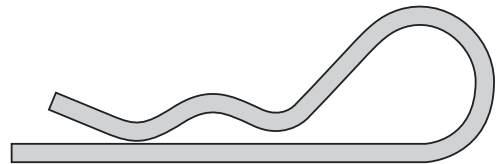
B-3861



3

Hairpin Cotter, 1/8" (x1)

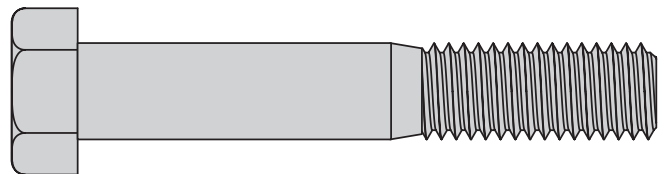
D-146P



16

Bolt; Hex, 1/2" x 3" (x2)

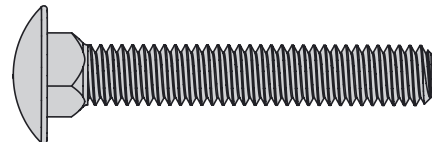
10M1032P



17

Bolt; Carriage, 5/16" x 2" (x2)

10M1032P



18

Bolt; Carriage, 5/16" x 1" (x28)

11M1016P

