

A M A E

EN

***INSTALLATION INSTRUCTIONS FOR SOLO SMART & DUAL
SMART WALL PANEL HEATERS***

NL

***INSTALLATIE INSTRUCTIES VOOR SOLO SMART & DUAL
SMART MUURPANEEL VERWARMING***

FR

***INSTRUCTIONS D'INSTALLATION POUR LE CHAUFFE-
PLANCHER SOLO SMART & DUAL SMART***

- Please keep this instructions in a safe place*
- Bewaar deze instructies op een veilige plaats*
- Veuillez garder ces instructions dans un endroit sûr*

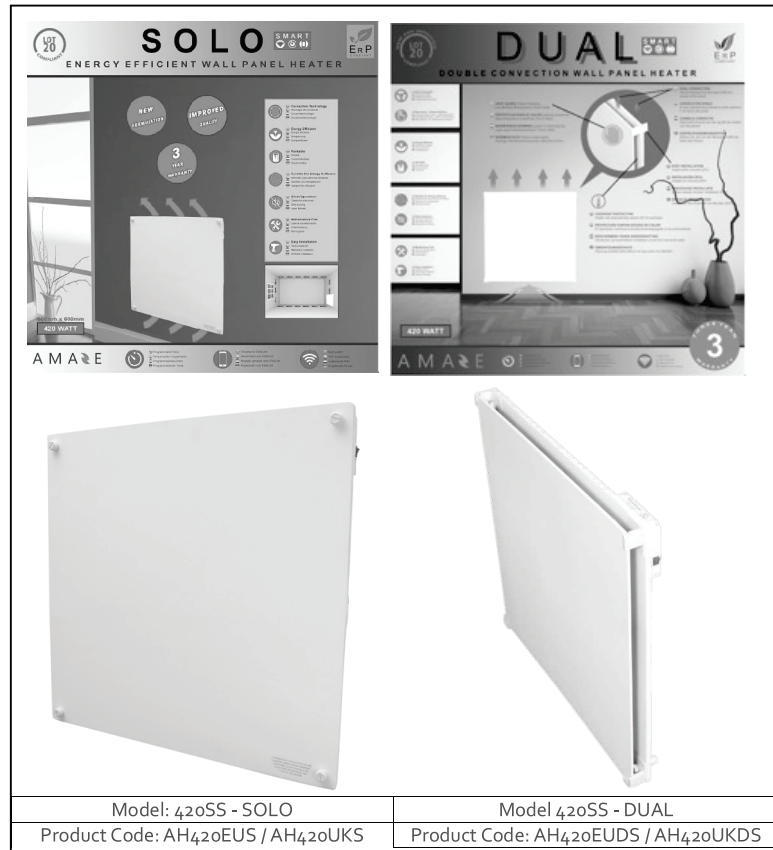
EN

**READ AND SAVE THESE IMPORTANT SAFETY INSTRUCTIONS
BEFORE YOU START INSTALLING YOUR NEW AMAZE PRODUCT**

CE



DO NOT COVER



AMAZE 420W ELECTRIC SMART WALL PANEL HEATERS

WELCOME to the AMAZE family. Thank you for choosing and purchasing our product. Amaze Smart Panel Heaters provide efficient room heating at a low cost. Using Natural Convection technology, heat is generated behind the heater in the space between the panel and the wall, which leads to an efficient updraft of heat circulated into the room creating comfortable warmth throughout the room.

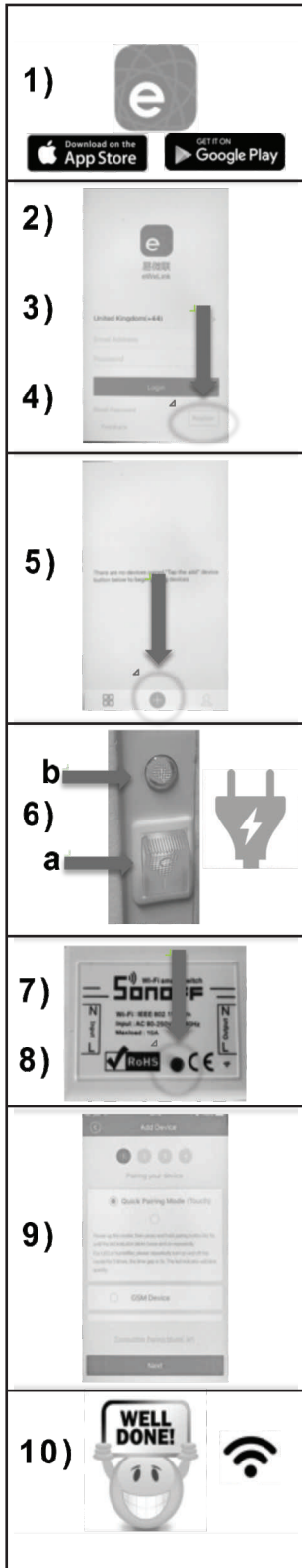
Please take note of the step-by-step instruction supplied in this booklet to ensure a hassle free installation.

AMAZE

WARNINGS

- 1) The appliance surface is HOT when in use so please use with caution, as it is a heating appliance.
- 2) DO NOT RUN THE CORD BEHIND THE HEATER.
- 3) In order to avoid overheating, do not cover the heater with anything, including wet or dry washing. Covering the panel could result in a fire hazard.
- 4) Amaze Wall Panel Heaters are for wall mount only and should under no circumstances be used as freestanding heaters.
- 5) The surface of the appliance is "safer" to touch due to its low thermal conductivity. However, an infant or a baby or any person with reduced physical, sensory or mental capabilities or lack of experience or knowledge should not be left unattended as prolonged contact with the surface may result in an injury as the surface is still hot.
- 6) This appliance is NOT suited for use in a bathroom.
- 7) The appliance is fitted with a 2-core cable only, any modification of the cable or removal of the factory fitted plug voids the warranty of the product.
- 8) Before drilling into the wall, check that the area is free of pipes or electrical wires embedded into the wall.
- 9) The appliances should not be located below or in front of an electrical socket.
- 10) When switching on the heater for the first time, there may be a slight odor during the first day or two. This is quite normal and is caused by the residual moisture in the panel and does not present any health hazard.
- 11) This product is not intended for use by persons (including children) with reduced physical, sensory or mental capabilities or lack of experience and knowledge, unless they have been given supervision or instruction concerning use of the appliance by a person responsible for their safety.
- 12) Children should be supervised to ensure that they do not play with the appliance.
- 13) The Amaze Panel Heaters are manufactured to withstand a consistent electricity supply of between 230 – 240VAC. Customers in regions that frequently experience surges/spikes or erratic power supply are advised to use a surge protector with our appliance. Our warranty does not cover damage as a result.
- 14) AMAZE-HEATERS HAS NO USER SERVICEABLE PARTS INSIDE and should only be opened by authorized agent.
- 15) To disconnect the heater from the wall socket, please only pull on the plug socket and not the cord to remove the socket from the wall.
- 16) ONLY USE EXTENSION CORDS where needed of 10Amps or more and do not run the extensions under carpeting, throw rugs, runners or similar coverings and arrange the cord in such a way to avoid tripping over the cord or extension.
- 17) This product is ONLY for indoor use and only for heating a room with no flammable material or substance in close proximity to the heater.
- 18) Only the provided fixing accessory kit should be used for mounting.
- 19) In the rare instance that a heater develops very minor hairline cracks this will NOT normally be considered a warrantable item. If this does occur, the Safety and performance of the heater will not be affected by cosmetic defects.
- 20) The customer shall be responsible for all costs incurred in the removal or reinstallation of the products, including but not limited to labor costs and shipping costs to return the heater to the Amaze-Heaters service center. Within the limitations of this warranty and at the discretion of Amaze-Heater LLC, we will repair or replace the heater.

**DO NOT COVER THE HEATER****A M A Z E**



WiFi Setup Guide –

EN

Please setup WiFi **BEFORE** you install your panel on

- 1) Before you can start you have to download the **EWeLink Smart Application** available from the **Apple** or **Google Play Store**.
- 2) Open the Smart App and press on the **"REGISTER"** button on the right bottom corner of the screen.
- 3) **Follow the instruction** on the Smart App on how to register.
- 4) Once registered, open the EWeLink Smart App on your smart device (phone or tablet) and **login** with your new username and password that you created.
- 5) Click on the **"+"** sign on the EWeLink Smart App and follow the instructions to **add your device**.
- 6) **Plug in and switch on** your Amaze heater. The **Rocker Switch (a)** on the side of the panel should be in the **ON** position and the light must be illuminated. This indicates that you have power connected to your heater. The second red round light (b) will not be illuminated at this time.
- 7) Press the black button in the **SONOFF WiFi Module** on the back of the panel **ONCE** to switch on the panel. The small round **red light (Point 6 – b)** will illuminate to indicate that your panel is now ON and operational.
- 8) When the green light is flickering, **press and hold the little black button on the SONOFF WiFi Module on the back of the panel for 5 SECONDS** until it blinks 3 times in a row continuously as indicated in the "Add Device Section" of the EWeLink Smart App in order to connect the heater with your device.
- 9) Follow the instructions on the EWeLink Smart App to **link your device to your WiFi** and **choose a name** for the product. The device should now be connected and ready to program.
- 10) When your green light on the SONOFF is permanently illuminated, your Amaze Product is now linked to your WiFi and **ready for programming**. You can now program your heater with the different kind of timing settings and schedules on the EWeLinkApp as per your personal requirements.

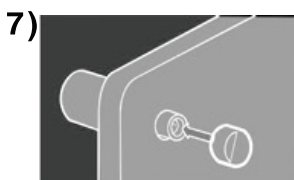
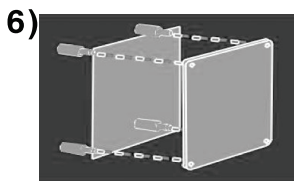
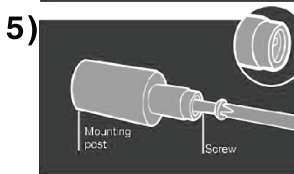
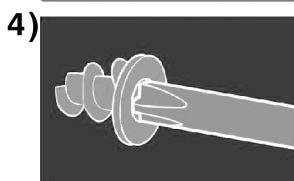
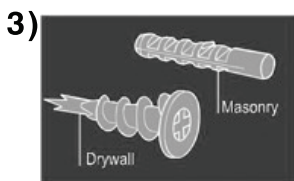
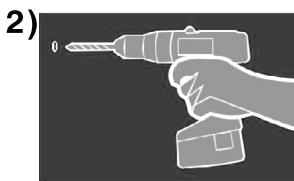
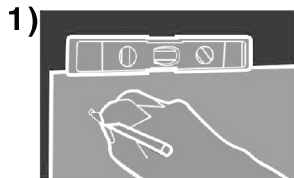
YOU CAN NOW CONTINUE WITH THE INSTALLATION OF YOUR AMAZE PANEL HEATER

A M A Z E

IMPORTANT NOTICE:

EN

Please setup the WiFi **BEFORE** you install the panel on the wall



Included in your packaging:



What tools you need:



EASY STEP-BY-STEP INSTALLATION INSTRUCTIONS

- 1) Use the template provided in the box to mark the holes for drilling, please ensure that the template is level as you mark the holes
- 2) Drill the 4 X holes that you marked
- 3) Insert the chosen anchors (either masonry wall or dry wall) inside the holes that you drilled.
- 4) If you choose a dry wall anchor, then please gently screw the anchor into the hole in the wall with a Phillips screwdriver.
- 5) Insert the long screw into the mounting post and screw into the anchor in the wall and screw until firmly secured onto the wall. Repeat this for all 4 holes.
- 6) Fit the heater onto the 4 X mounting posts by aligning the mounting posts with the holes and press the heater towards the wall until the threaded ends appear through the holes of the heater.
- 7) Screw the end caps with your fingers onto the exposed ends of the mounting posts to hold it secure.

FOR DUAL SMART – PLEASE FOLLOW THE ADDITIONAL INSTRUCTIONS BELOW:

- 8) **If you are installing the DUAL SMART Wall Panel Heater, then please install the DUAL corner brackets to the bottom two mounting posts and screw the end caps onto the exposed ends of the mounting posts to hold it secure only before installing the top two DUAL corner brackets*
- 9) **Slide the DUAL Heatguard into the two groves in the bottom corner brackets.*
- 10) **Now insert your top two DUAL brackets onto the HEATGUARD and fit them into the top two mounting posts.*
- 11) **Screw the last two end caps between the HEATGUARD and the heater with your fingers to hold the heater and the HEATGUARD secure in place.*



DO NOT COVER THE HEATER

A M A E

Warranty

IMPORTANT: PLEASE AFFIX YOUR PROOF OF PAYMENT/RECEIPT TO THIS LEAFLET. YOU WILL BE REQUIRED TO FURNISH THE PROOF IF PURCHASE IN THE EVENT OF A WARRANTY CLAIM.

Amaze Appliances International warrants that your Amaze Panel Heater is free from manufacturing defects, **subject to the following conditions:**

- 1) Such a warranty shall be to repair or replace the goods in the event of any manufacturing defects (which shall exclude fair wear and tear) notified to Amaze Appliances International within 3 years of the original purchase.
- 2) Any liability on Amaze Heat International hereunder shall be conditional on the goods having been stored and installed properly (in accordance to the Amaze Appliances installation instructions) and, from the date of delivery.
 - a. Having been used and maintained in accordance with Amaze Appliances Instructions and/or labeling on the goods;
 - b. No repairs or alterations thereon having been carried out by the buyer or any third party.
- 3) The warranty is a substitution for and excludes all expressed or implied (whether by law or otherwise) conditions, warranties or obligations of any kind relating to fitness for purpose or quality of workmanship, material or design, save to the extent that any law prevents such exclusion. Amaze Heat International accepts no liability for any workmanship of any approved installer (as contemplated above), the approved installers being independent contractors. If the heater is found to be faulty, it must be returned to the outlet/retailer that the product was purchased from.

Limitation of Liability

- 1) Save as expressly provided for in these Conditions of Sale, and save as may be stipulated to the contrary in the Consumer Protection Act of the specific country of sale within Europe or the rest of the world, Amaze Appliances shall not be liable to the Purchaser (or their employees, servants or agents, contractors or successor purchasers) for and direct, indirect or consequential damages of any nature howsoever caused (whether based in dialect or contract or otherwise) pursuant to or arising in respect of the installation and/or use of goods. This means that if ANY loss, damage or harm is caused to anyone due to the use or installation of these goods, you may not hold Amaze Appliances International (CO GB) Ltd or any of its subsidiaries liable in law.
- 2) Save as may be stipulated to the contrary in the CONSUMER PROTECTION ACT in the country sold, in respect of any liability of the Seller that has been excluded, the Purchaser hereby indemnifies Amaze Appliances International (CO GB) Ltd (its members, employees and agents) against all actions, proceedings and claims whatsoever brought against it (its members, employees or agents), by a third party pursuant to, arising in respect of the installation and/or use and/or supply of the goods. This means that if Amaze Appliances International (CO GB) Ltd or any of its subsidiaries is sued by anyone in paragraph 1 above arising from the installation or use of the product that you as the Purchaser will financially indemnify Amaze Appliances International (CO GB) Ltd or any of its subsidiaries against any losses which Amaze Appliances International (CO GB) Ltd or any of its subsidiaries may suffer, as a result of such law suit.



DO NOT COVER THE HEATER

**If you have any questions regarding the product, please do not hesitate to contact us via our 24hour customer support on:
info@amazeappliances.com
Or visit our website
www.amazeappliances.com
And our team would be more than happy to assist.
ENJOY YOUR AMAZE PANEL HEATER**

AMAZE APPLIANCES INTERNATIONAL
European Headquarters
Canterbury
United Kingdom

EMAIL
info@amazeappliances.com
WEB
www.amazeappliances.com