


For Residential and Commercial Applications

Job Name		Engineer / Architect	
Job Location		Wholesaler	
Submittal Date		Contractor	

SWB07 3/4" ID Coated Stainless Steel Water Heater Connector – Female Iron Pipe x PEX

Use: For use in exposed locations only to connect water heaters, water softeners and other water connected devices to the water supply

Design Features:

- **Proprietary ProCoat® clear coat** provides unrivaled corrosion protection from harsh chemicals that can cause surface deterioration and pinhole leaks
- **Superior corrosion resistance** to harsh chemicals found in common household cleaning, plumbing repair, and masonry products
- **UV rays & salt resistant**, ProCoat® connectors are certified for indoor & outdoor use
- **Uniform coat over entire length of connector** for complete corrosion resistance of the stainless steel core
- **Integrated dielectric sleeve** effectively isolates dissimilar metals within the waterway to help prevent galvanic and electrolytic corrosion
- **No dielectric union needed** with installation. Dielectric is built into the design of the connector
- **Less torque to seal** against the pliable rubber washer, especially on rough nipple surfaces
- **Longer connector nuts** allow a greater number of thread-to-thread contacts and a better seal
- **100% Leak tested** prior to coating application to ensure connector performance and reliability
- **100% Compliant** 

Operating Specifications:

Temperature: 40° to 180° F

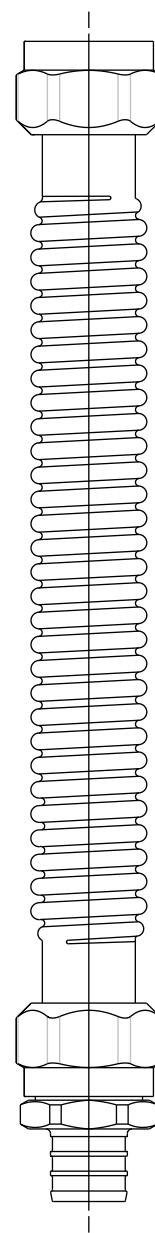
Water Pressure: 125 PSI maximum

MATERIAL SPECIFICATIONS

Tubing	Stainless steel
Dielectric Sleeve	Polymer blend
Nuts	Brass, nickel plated
Washers	Rubber
PEX Fitting	Compliant brass
Coating	Polymer blend

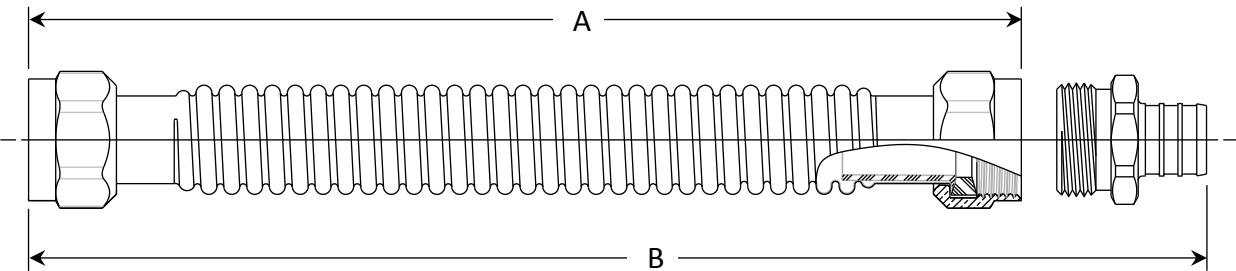
Part Listing:

- ☐ SWB07-18N 3/4" ID X 18" connector with 3/4" FIP x 3/4" PEX barb (brass, pre-torqued)



This specification and all information contained herein is the confidential and exclusive property of BrassCraft Manufacturing, and shall not be disclosed to others without the written consent of BrassCraft Mfg. This specification must be returned to BrassCraft Mfg if requested.

SWB07 3/4" ID Coated Stainless Steel Water Heater Connector – Female Iron Pipe x PEX



PART DIMENSIONS (Inches)		
Connector Length		
Model	Dim. A	Dim. B
SWB07	18.00/18.80	18.92/ 19.72

Listings & Certifications:

- CSA listed to ASME A112.18.6 and CSA B125.6
- IAPMO listed to ASME A112.18.6 and CSA B125.6 (File # 0452)
- Compliant product CSA listed to Low Lead Content Certification Program – Plumbing Products Class 6853-01



This specification and all information contained herein is the confidential and exclusive property of BrassCraft Manufacturing, and shall not be disclosed to others without the written consent of BrassCraft Mfg. This specification must be returned to BrassCraft Mfg if requested.