

# Galanz

# Galanz

MODEL: GLAFX606S215

DIGITAL AIR FRYER USER MANUAL



Thank you for purchasing a Galanz product. Please read this manual carefully for correct usage and safety, and keep for future reference. For service, support and warranty information, call 800-562-0738.

# CONTENTS

<b>Important Safety Instructions</b>	<b>1</b>
<b>What's in the Box</b>	<b>3</b>
<b>Before First Use</b>	<b>4</b>
<b>Getting to Know Your Galanz Digital Air Fryer</b>	<b>5</b>
Control panel	
Smart Program Settings	
<b>Preparing &amp; Using Your Air Fryer</b>	<b>7</b>
<b>Care &amp; Maintenance</b>	<b>8</b>
Cleaning	
Storage	
<b>Troubleshooting Guide</b>	<b>9</b>
<b>Product Warranty</b>	<b>10</b>

# IMPORTANT SAFETY INSTRUCTIONS

When using electrical appliances, basic safety precautions should always be followed, including the following:

READ ALL INSTRUCTIONS BEFORE USING YOUR GALANZ DIGITAL AIR FRYER.

- Read all instructions.
- Do not touch hot surfaces. Use handles or knobs.
- Close supervision is necessary when any appliance is used by or near children.
- To protect against electric shock, do not immerse the air fryer into water or other liquid.
- Do not let cord hang over edge of table or counter, or touch hot surfaces.
- Do not operate appliance with damaged cord or plug or after the appliance malfunctions, or has been damaged in any manner, return appliance to the nearest Authorized Service Center for examination, repair, or adjustment.
- The use of accessory attachments not recommended by the appliance manufacturer may cause hazard or injury.
- When operating the oven, keep at least four inches of space on all sides of the oven to allow for adequate air circulation.
- Unplug from outlet when not in use, or before cleaning. Let it to cool before putting on or taking off parts, or before cleaning.
- To disconnect, press the STOP/CANCEL button to return the standby mode, then unplug the plug. Always hold the plug, but never pull the cord.
- Do not cover any part of the air fryer with metal foil when the air fryer is operating. This may cause overheating of the oven.
- Do not clean with metal scouring pads. Pieces can break off the pad and touch electrical parts, creating a risk of electric shock.

- Do not place any of the following materials in the air fryer: cardboard, plastic, paper, or anything similar.
- Do not store any materials, other than manufacturer's recommended accessories, in this oven when not in use.
- Do not use outdoors.
- Do not use appliance for other than intended use.
- This appliance is for HOUSEHOLD USE ONLY.
- Temperature of accessible surfaces may be high when the appliance is operating.
- This appliance is not intended for use by persons (including children) with reduced physical, sensory or mental capabilities or lack of experience and knowledge, unless they have been given supervision or instruction concerning use of the appliance by a person responsible for their safety.
- Children should be supervised to ensure that they do not play with the appliance.
- For appliance with type Y attachment, if the supply cord is damaged, it must be replaced by the manufacturer, its services agent or similarly qualified persons in order to avoid a hazard.
- Rear surface of appliances should be placed against a wall.
- **WARNING:** This appliance includes a heating function. Surfaces, other than the functional surfaces may develop high temperatures. Since temperatures are perceived differently by different people, this device should be used with CAUTION. Hold the appliance exclusively to grip surfaces intended to hold and use such heat protection measures as heat protection Gloves or pot holders. Areas which are not intended to grips must be given sufficient time to cool.
- Do not place on or near a hot gas or electric burner, or in a heated oven.
- Extreme caution must be used when moving an appliance containing hot oil or other hot liquids.

# IMPORTANT SAFETY INSTRUCTIONS

- Appliances are not intended to be operated by means of an external timer or separate remote-control system.
- Do not put the oil or any other liquid in the pan.
- To prevent the pan from dropping on the ground, always place the pan on a stable surface before removing the air fry basket.
- a) A short power-supply cord (or detachable power-supply cord) is provided to reduce the risk resulting from becoming entangled in or tripping over a longer cord.
- b) Longer detachable power-supply cords or extension cords are available and may be used if care is exercised in their use.
- c) If a longer detachable power-supply cord or extension cord is used:
  - 1) The marked electrical rating of the cord set or extension cord should be at least as great as the electrical rating of the appliance;
  - 2) The cord should be arranged so that it will not drape over the countertop or tabletop where it can be pulled on by children or tripped over unintentionally;
  - 3) If the appliance is of the grounded type, the cord set or extension cord should be a grounding-type 3-wire cord.

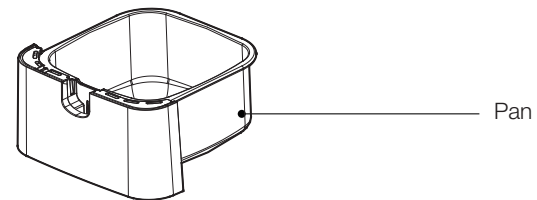
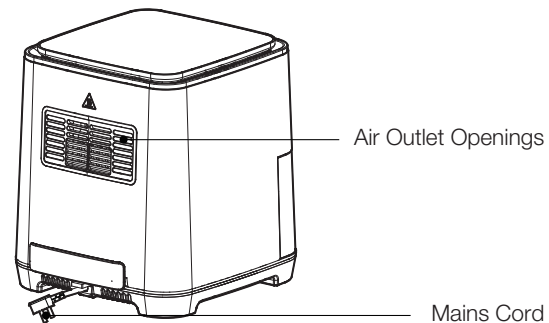
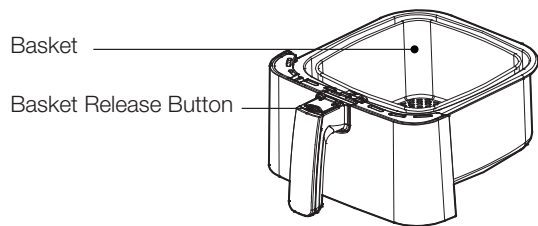
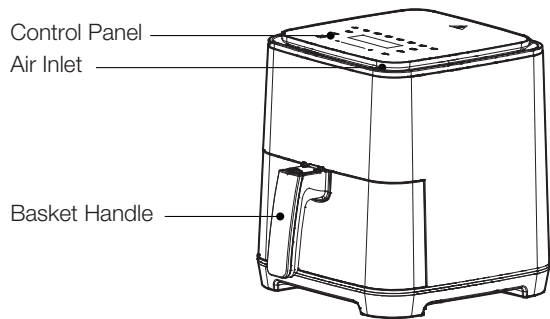
CAUTION: APPLIANCE SURFACES ARE HOT AFTER USE. ALWAYS HANDLE WITH CARE.

## SPECIFICATION

Model	GLAFX606S215
Power Consumption	120V, 60Hz
Watts	1450W
Capacity	5.8 Quart / 5.5 L
Product Weight	14.3 lbs / 6.5 Kgs
Dimensions (DxWxH)	15.55 x 12.36 x 12.60 inches 39.5 x 31.4 x 32.0 cm

HOUSEHOLD USE ONLY  
SAVE THESE INSTRUCTIONS

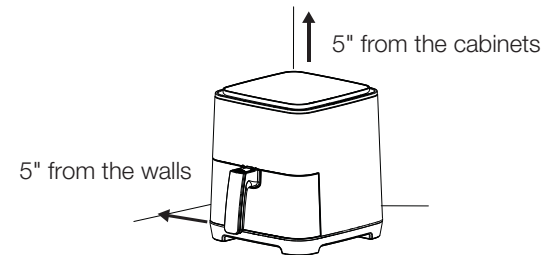
## WHAT'S IN THE BOX



## BEFORE FIRST USE

Before using your digital air fryer for the first time, be sure to

- 1. IMPORTANT:** Review all warnings in **IMPORTANT SAFETY INSTRUCTIONS**.
- 2. Remove all packaging material** from the appliance.
- 3.** Place the air fryer on a stable, level, heat-resistant surface. Keep away from areas that can be damaged by steam (such as walls or cabinets).

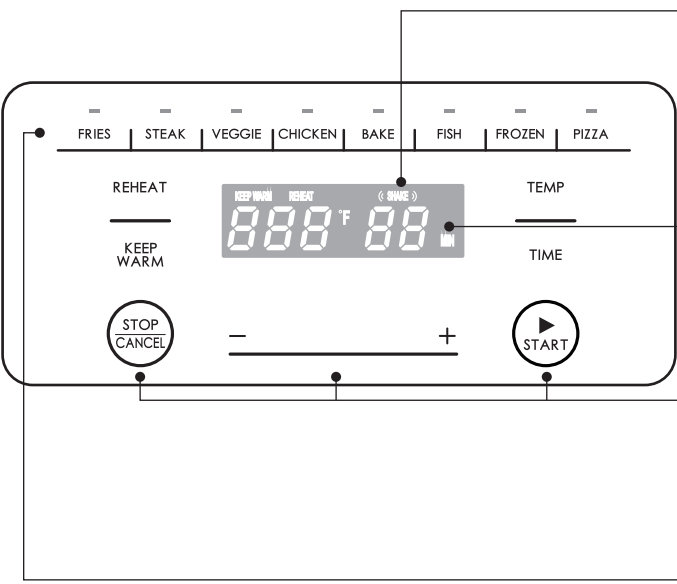


- 4.** Pull the handle to remove the baskets. Press the basket release button to separate the inner basket from the outer basket.
- 5.** Wash the basket and pan thoroughly, using either a dishwasher or a non-abrasive sponge.

- 6.** Wipe the inside and outside of the air fryer with a slightly moist cloth.
- 7.** Put the basket back inside the air fryer.



CONTROL PANEL



Indicators

KEEP WARM  
Indicates when KEEP WARM setting is ON  
REHEAT  
Indicates when REHEAT setting is ON  
SHAKE  
Reminder to shake or flip food

LED Display

\*Temperature Display  
Shown in units of °F  
\*Time Display  
Shown in minute-format 40 = 40 minutes

Control Buttons

\*STOP/CANCEL and START  
Refer to Smart Program Settings  
\*- / +  
Decrease or increase the time/temperature

Smart Programs

Refer to [Smart Program Settings](#) section for information on each Smart Program

SMART PROGRAM SETTINGS

Reheat

■ User can reheat food by pressing this button if the food is cold or if the desired cooking temperature was not achieved.

Keep Warm

■ After the cooking, user can press this button to keep the food warm.

Temperature/Time Adjustment

■ Press the **TEMP** or **TIME** button to set the desired cooking temperature and time.

Stop / Cancel

- During cooking, you can press this button once to pause the cooking process. The LED display will flash. Press the **TEMP** or **TIME** button to adjust the cooking temperature or time as needed then press **START** to begin cooking again.
- During cooking, you can press the button twice to cancel the cooking program and return to the **Standby** mode.

START

■ After selecting a cooking program, press this button to start cooking.

-/+ Button

■ In the time or temperature setting mode, press the -/+ button to set the time or temperature.

PRESET COOKING PROGRAMS

1. You can customize the time for each setting, 1 - 60 minutes for each smart program and 1 - 30 minutes for Keep Warm and Reheat functions. The temperature can be adjusted from 175 - 400F on the smart programs. Keep Warm and Reheat temperatures can not be adjusted.
2. Results may vary. Check out the Reference Guide for a guide to customizing presets for perfect results.

Smart Program	Default Temperature	Default Cooking time (Minutes)	Shake Timer
Fries	360°F	0:25	((SHAKE))
Steak	400°F	0:10	-
Veggie	360°F	0:08	((SHAKE))
Chicken	375°F	0:30	((SHAKE))
Bake	350°F	0:08	-
Fish	375°F	0:10	-
Frozen	400°F	0:08	((SHAKE))
Pizza	400°F	0:08	-
Reheat	355°F	0:04	-
Keep Warm	175°F	0:30	-

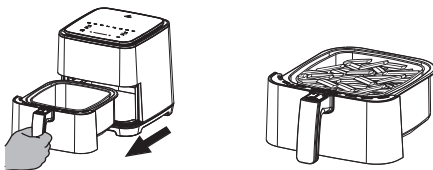
# PREPARING & USING YOUR AIR FRYER

1. Plug the air fryer into outlet.

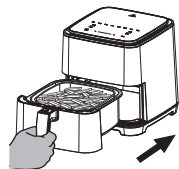
2. Add the food to the cooking basket evenly.

## TIPS:

The amount of the food should not be more than 4/5 of total amount of the air fry basket.



3. Place the basket in the pan. Insert the pan into the air fryer.



4. Select the desired preset program by pressing the button.

5. Optionally, customize the temperature and time. You can do this anytime during cooking.

■ Press **TEMP** once. The temperature will flash on the display.

Press the + or - buttons to change the temperature.

■ Press the **TIME** once. The time will flash on the display. Press the + or - buttons to change the time.

## TIPS:

The cooking temperature and time can be adjusted during the cooking.

6. Press **START** to start air frying and the time will begin to countdown.

## TIPS:

1) To pause the cooking, press the "**START/CANCEL**" button once.

2) To cancel the cooking, press the "**START/CANCEL**" button twice.

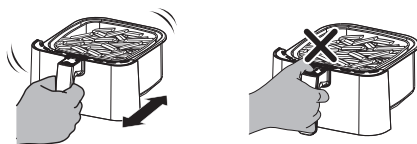
7. The Shake Timer will appear halfway through the cooking time. The air fryer will beep 3 times and "((SHAKE))" will flash on the display.

■ Take the basket out of the air fryer, being careful of hot steam.

The air fryer will pause cooking automatically.

■ Shake or flip the food. Be careful not to press the basket release button.

■ Put the basket back into the air fryer.

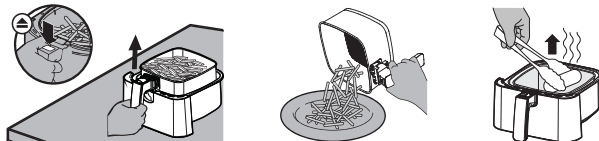


8. When the countdown reaches 1 minute, the time on the display counts down in seconds. The air fryer will beep 5 times when finished.

9. Optionally, press **KEEP WARM**. Press the + or - button to change the time (1–30 minutes).

10. Take the basket out of the air fryer, being careful of hot steam.

11. To serve food, remove the inner basket from the cooking pan by pressing the basket release button. This will allow any crumbs to stay in the cooking pan for easier clean-up. Serve food directly from the basket or pour food onto a plate or serving dish.



12. Allow to cool before cleaning.

# CARE & MAINTENANCE

## USE MAINTENANCE INSTRUCTIONS

This appliance requires little maintenance. It contains no user serviceable parts. Do not try to repair it yourself. Contact a qualified appliance repair technician if the product requires servicing.

## CLEANING

Your air fryer should be cleaned regularly for best performance and long service life. Always clean the air fryer basket after every use.

1. Unplug the air fryer. Allow it to cool completely before cleaning. Pull out the basket for faster cooling.

2. Wipe the outside of the air fryer with damp, soapy cloth.

3. The basket is dishwasher safe. You can also wash the baskets with hot, soapy water and a non-abrasive sponge, if necessary.

## CAUTION:

The basket has a nonstick coating. Abrasive cleaners, scrubbing brushes and chemical cleaners will damage the coating. Avoid metal utensils and abrasive cleaning materials.

4. For stubborn grease on the basket and pan:

■ Add dishwashing liquid to the basket and pan and soak in warm water for 15 minutes before rinsing.

5. Clean the inside of the air fryer with a slightly moist, non-abrasive sponge or cloth.

## CAUTION:

**DO NOT IMMERSE THE APPLIANCE IN WATER OR ANY OTHER LIQUIDS.**

6. Allow the appliance to cool and dry completely before storing or using.

## STORAGE

■ Unplug your air fryer and let it cool to room temperature, then clean it before storing. Store the appliance in a clean, dry place. Never store appliance while it is hot or still plugged in. Never wrap cord tightly around the appliance. Do not put any stress on the cord where it enters the unit, as it could cause the cord to fray and break.

■ This appliance requires little maintenance. It contains no user serviceable parts. Do not try to repair it yourself. Any other servicing should be performed by an authorized service representative.

TROUBLESHOOTING GUIDE

Problem	Possible Solution
The air fryer will not turn on.	Make sure the air fryer is plugged in.
	Push the basket securely into the air fryer.
Foods are cooked unevenly.	Ingredients that are stacked on top of each other or close to each other need to be shaken or flipped during cooking.
Basket will not slide into the air fryer securely.	Make sure the basket is not overfilled with food.
	Make sure the inner basket is securely inside the outer basket.
White smoke is coming out of the air fryer.	The air fryer may produce some white smoke when you use it for the first time. This is normal.
	Make sure the baskets and the inside of the air fryer are cleaned properly and not greasy.
	Cooking greasy foods will cause oil to leak into the outer basket. This oil will produce white smoke, and the baskets may be hotter than usual. This is normal, and should not affect cooking. Handle baskets with care.
Steam is coming out of the air fryer.	Cooking frozen foods will cause steam to leak into the outer basket. This is normal, and should not affect cooking. Handle basket with care.
Dark smoke is coming out of the air fryer.	Immediately unplug your air fryer. Dark smoke means that food is burning or there is a circuit problem. Wait for smoke to clear before pulling the baskets out. If the cause was not burnt food, contact Customer Support.
Display shows Error Code “E1”.	There is an open circuit in the temperature monitor. Contact Customer Support.
Display shows Error Code “E2”.	There is an open circuit in the temperature monitor. Contact Customer Support.
Display shows Error Code “E3”.	When the temperature exceeds 482°F, it will be detected as an over-temperature state and display the error code. Allow it to cool down and restart the program.

PRODUCT WARRANTY

This warranty applies to products sold by Galanz Americas in the U.S. This warranty is in lieu of any other warranty and expressly applies to the individual product only.

Galanz product is warrantied for one year following purchase for defects in material and workmanship. **Please save your receipt as proof of purchase is required to make a warranty claim.** During this warranty period, we will provide the replacement cost of this product, a replacement or the equivalent,or repair per our discretion.

The warranty cannot be transferred through resale, including the resale through a 3rd party unauthorized retailer and is only bestowed upon the original consumer purchaser upon purchase from an authorized retailer.

- This warranty does not cover and excludes damage or defects caused by:**
  - Consumer misuse
  - Abuse
  - Neglect including the failure to clean and/or provide adequate regular maintenance as outlined in the user manual
  - Commercial use
  - Subjecting the product to any voltage outside the specified range
  - Loss of parts
  - The affixing of any attachments not provided with the product
  - Accident, or
  - Use in a manner not intended and outlined in the user manual.
- Any subsequent damages caused by the above listed exclusions will not be covered and any claims determined to meet the

- above exclusions will be denied. All liability is limited to the purchase price and does not include any:
 
  - Retail offered extended warranties
  - Tax
  - Other charges(including postage to send required materials)
  - Incidental and/or consequential damages associated with the product in question.

Every implied warranty, including any statutory warranty of merchantability or fitness for a particular purpose is disclaimed except to the extent prohibited by law, in which case such warranty is limited to the duration of this written warranty. This warranty gives you specific legal rights. You may have other legal rights that vary depending on where you live. Some states do not allow limitations on implied warranties or special, incidental, or consequential damaged, so the above limitations may not apply to you.

If you have a claim under this warranty, please call our Customer Service number: 1-800-562-0738.

For faster service, please have the model number, serial number, and receipt ready for the operator to assist you.

# WARRANTY REGISTRATION

Please mail this warranty card to address below within 30 days of purchase.  
**Galanz Americas, 55 Challenger Road, Suite 503, Ridgefield Park, NJ 07660.**

**PLEASE PRINT CLEARLY.**

Name\_\_\_\_\_

Address\_\_\_\_\_

City\_\_\_\_\_State\_\_\_\_\_Zip\_\_\_\_\_

Phone\_\_\_\_\_Email\_\_\_\_\_

Model Number\_\_\_\_\_Serial Number\_\_\_\_\_

Purchase Location\_\_\_\_\_

**You must attach a copy of your purchase receipt to validate your registration.**