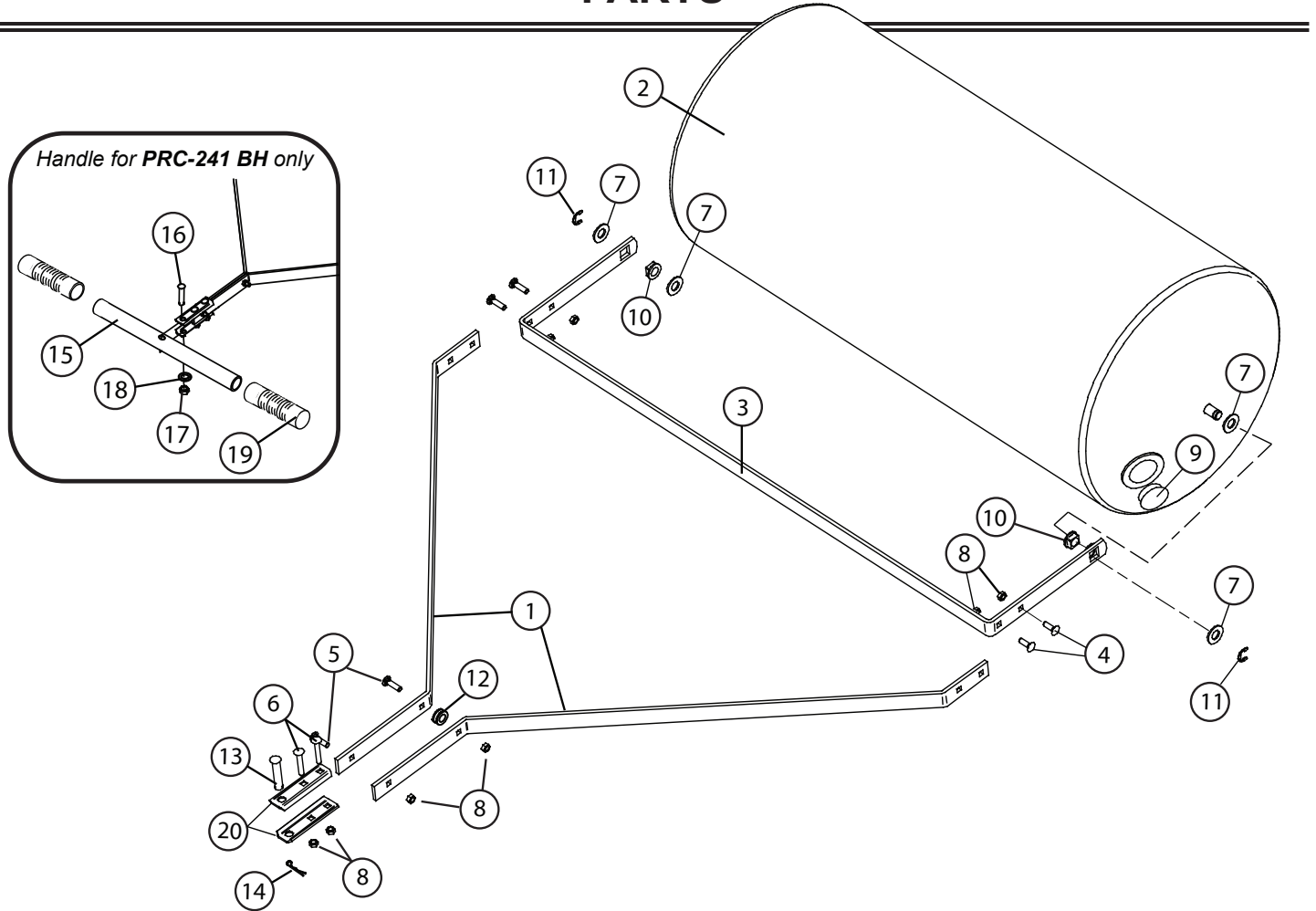


# PARTS



Ref. #	Description	Qty.	PRC-241 BH	PRT-361 BH	PRT-361S BH	PRT-481S BH
1	Frame Extension Bar	2	B-3554-10	B-6289-10	B-5357-10	B-6290-10
2	Roller Drum Assembly	1	B-5121	B-6271	B-5353-B	B-5789-B
3	Scraper Bar	1	B-6291-10	B-6272-10	B-6292-10	B-6294-10
4	5/16" x 1", Carriage Bolt	4	11M1016P	11M1016P	11M1016P	11M1016P
5	5/16" x 1-1/2", Carriage Bolt	2	11M1024P	11M1024P	11M1024P	11M1024P
6	5/16" x 2-1/4", Carriage Bolt	2	11M1036P	11M1036P	11M1036P	11M1036P
7	5/8" Flat Washer	4	45M2121P	45M2121P	45M2121P	45M2121P
8	5/16" Nylon Lock Nut	8	B-4786	B-4786	B-4786	B-4786
9	Plug	1	B5121-PL	B5121-PL	B5121-PL	B5121-PL
10	Square Bearing	2	B-6270	B-6270	B-6270	B-6270
11	5/8" E-Ring	2	F-577	F-577	F-577	F-577
12	Frame Spacer	1	R-1141	R-1141	R-1141	R-1141
13	Hitch Pin	1	B-3861	B-3861	B-3861	B-3861
14	Hitch Pin Cotter	1	D-146P	D-146P	D-146P	D-146P
15	Handle	1	B-3556-10			
16	Hex Bolt 1/2" x 2-1/4"	1	1M1636P			
17	Hex Nut 1/2"	1	30M1600P			
18	Lock Washer 1/2"	1	40M1600P			
19	Grip	2	B-2579			
20	Clevis	2	R-892-10			

Installation Questions?  
 Missing Parts? Replacement Parts?  
**DON'T GO BACK TO THE STORE!**  
 Please call our Customer Service  
 Department, Toll Free: 877-728-8224  
 or [customerservice@brinly.com](mailto:customerservice@brinly.com)



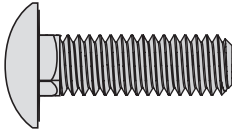
# HARDWARE IDENTIFIER



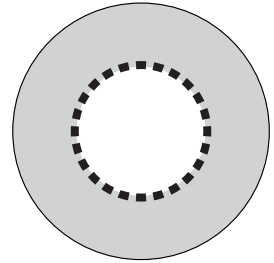
Illustrations on this page are to scale for faster identification of hardware during assembly.

**DO NOT RETURN PRODUCT IF YOU ARE MISSING PARTS.**  
Please Call: 1 (800) 972-6130

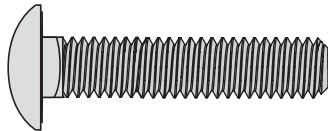
④ Carriage Bolt  
5/16 x 1"  
(x4) .....  
**11M1016P**



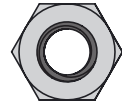
⑦ Washer: Flat  
5/8" (x4) .....  
**45M2121P**



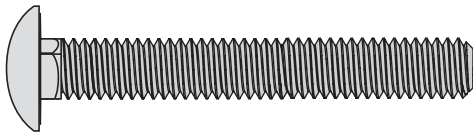
⑤ Carriage Bolt  
5/16 x 1 1/2"  
(x2) .....  
**11M1024P**



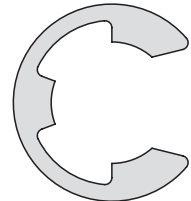
⑧ Nut: Nylon Lock  
5/16" (x8) .....  
**B-4786**



⑥ Carriage Bolt  
5/16 x 2 1/4"  
(x2) .....  
**11M1036P**



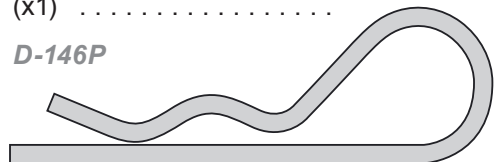
⑪ E-Ring, 5/8"  
(x2) .....  
**F-577**



⑬ Hitch Pin (x1)  
.....  
**B-3861**

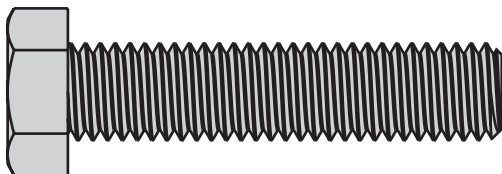


⑭ Hitch Pin Cotter  
(x1) .....  
**D-146P**

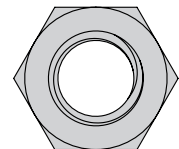


## PARTS IN ADDITIONAL HARDWARE BAG (Only for PRC-241 BH)

⑯ Bolt: Hex Head  
1/2 x 2-1/4"  
(x1) .....  
**1M1636P**



⑰ Nut: Hex  
1/2" (x1) .....  
**30M1600P**



⑱ Lock Washer 1/2"  
(x1) .....  
**40M1600P**

