

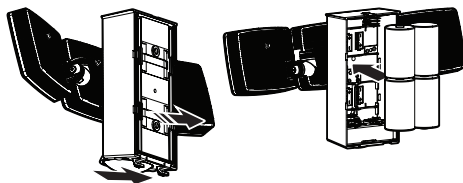
DEFIANT®

Quick Reference Guide HB-2813 Battery Operated Light

Item #1009569680
Model #HB-2813-BK

Installation

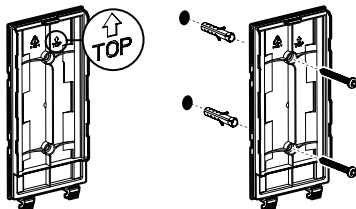
- Determine the mounting location – ceiling/eave or wall mount.
- Gently pull the two tabs on the bottom of the mounting plate away from the main body.
- Install 4 x Alkaline “D” 1.5 V batteries (not included) into the battery compartment. Ensure the polarity (+ & -) of the batteries is correct as shown in the battery compartment.



WALL MOUNT

- Place the mounting plate against the wall with the arrow and the word “TOP” facing you (see illustration). Ensure the mounting plate is level and screw the mounting screws directly through the plastic in the backplate where the screw holes are indicated. To mark the hole locations, use the paper template on the last page of the Use and Care Guide.
- If mounting to a wooden surface like a deck, you can install the mounting screws through the mounting plate and into the wood with a screwdriver, or with a drill and bit driver. You can also drill two pilot holes into the wood mounting surface with a 1/8 inch drill bit and then install the screws.

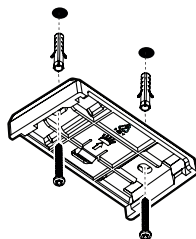
- If mounting to wall board or brick, drill two pilot holes into the mounting surface, using a 7/32 inch drill bit. Insert the wall pegs and attach the mounting plate using the two mounting screws.



EAVE OR CEILING MOUNT

- Install the eave mounting bracket with the symbol facing towards the light direction with screws.
- If mounting to a wooden surface like a deck, you can install the mounting screws through the mounting bracket and into the wood with a screwdriver, or with a drill and bit driver. You can also drill two pilot holes into the wood mounting surface with a 1/8 inch drill bit and then install the screws.

- If mounting to wall board or brick, drill two pilot holes into the mounting surface, using a 7/32 inch drill bit. Insert the wall pegs and attach the mounting bracket using the two mounting screws.



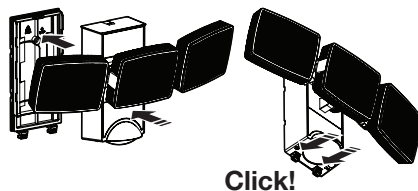
DEFIANT®

HOMEDEPOT.com

Please contact 1-866-308-3976 for further assistance.

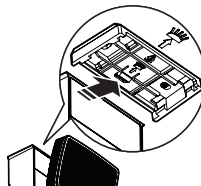
WALL MOUNT

- Attach the light fixture to the mounting plate.
- Press the unit on the top to the mounting plate. You should hear a “Click” sound. This indicates that the main body is securely attached to the mounting plate.



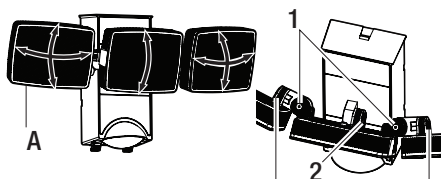
EAVE OR CEILING MOUNT

- Slide the front of the light fixture onto the rear of the eave mounting bracket, until it reaches the front of the bracket and “clicks” into place. This indicates that the main body is securely attached to the eave mounting bracket.



Operation

- If needed, gently grasp the lamp heads (A) and adjust.
- Hinge (1) can pan the light in and out. Hinge (2) can tilt the lamp up and down.



- When motion is detected, the light will turn on for 15 seconds at 100% brightness and stay on as long as motion is being detected. If no further motion is detected, after 15 seconds, the light will dim to 20% brightness for another 10 seconds, before turning the light off. If further motion is detected, the light will come on at 100% brightness.

FCC Supplier's Declaration of Conformity (SDoC)		
Unique Identifier	Trade Name:	IQ America
	Model Name:	HB-2813-BK
Responsible Party-U.S. Contact Information		
IQ America, Inc. 110 Glancy St., Suite # 212 Goodlettsville, TN 37072 USA Tel: 1-800-296-1869		
FCC Compliance Statement (for products subject to Part 15)		
This device complies with part 15 of the FCC Rules. Operation is subject to the following two conditions: (1) This device may not cause harmful interference, and (2) this device must accept any interference received, including interference that may cause undesired operation.		

DEFIANT®

HOMEPOT.com

Please contact 1-866-308-3976 for further assistance.