

**OVENTE®**

2-SLICE ELECTRIC  
**PANINI GRILL**  
GP0620 SERIES



*Before use, please read this manual thoroughly and save for future reference.*

[ovente.com](http://ovente.com)



2-SLICE ELECTRIC  
**PANINI GRILL**  
GP0620 SERIES



# 2-SLICE ELECTRIC PANINI GRILL

GP0620 SERIES

## TABLE OF CONTENTS

IMPORTANT SAFETY	. . . . .	4
PARTS AND FEATURES	. . . . .	5
USING YOUR PANINI GRILL	. . . . .	7
PANINI GRILL TIPS	. . . . .	8
CARE & MAINTENANCE	. . . . .	9



# IMPORTANT SAFEGUARDS

When using this Paninig Grill, basic safety precautions should always be followed, including the following:

Read all instructions carefully before using the Panini Grill.

- ❗ Before connecting the grill check if the voltage indicated on the bottom of the grill corresponds to the local mains voltage before you connect the appliance.
- ❗ DO NOT operate any appliance with a damaged cord or plug or after the grill malfunctions, or has been damaged in any manner. If the mains cord is damaged, contact your service provider immediately.
- ❗ To protect against electrical hazards, DO NOT immerse cord, plugs, or the appliance in water or other liquid.
- ❗ DO NOT let cord hang over edge of table or counter, or touch hot surfaces.
- ❗ Regularly check the main cord if it is still in good and safe condition.
- ❗ To avoid circuit overload, do not operate another high voltage appliance on the same circuit.
- ❗ Appliance should always be used on a dry and level surface.

- ❗ Do not place the appliance on or near a hot gas or electric burner.
- ❗ Do not touch hot surfaces while the grill is operating. These can become very hot.
- ❗ Close supervision is necessary when any appliance is used by or near children.
- ❗ The grill is not intended for persons (including children) with reduced physical, sensory or mental capabilities, or lack of experience and knowledge, unless they have been given supervision or instruction concerning use of the appliance by a person responsible for their safety.
- ❗ Unplug from outlet when not in use and before cleaning. Allow to cool before putting on or taking off parts, and before cleaning the appliance.
- ❗ Do not use outdoors or for purposes other than intended use.
- ❗ DO NOT touch hot surfaces. Use handles or knobs. "▲" indicates that the surface temperature is very high, paying particular attention not to touch.

- ❗ DO NOT move the unit when it is still hot.
- ❗ Always place grill on a heat resistant surface.
- ❗ Turn the switch OFF before connecting or disconnecting plug from power outlet.
- ❗ Always unplug grill immediately after using and allow cooling before cleaning and storing.
- ❗ DO NOT leave unit unattended while in use.
- ❗ The device is not intended to be operated with an external timer or separate remote control system.
- ❗ Never place anything between the grill plate and the food i.e. dish, aluminum foil, etc.
- ❗ CAUTION: This appliance generates heat during use. Proper precautions must be taken to prevent the risk of burns, fires or other damage to property caused by touching the sides or top while in use or during cooling.

## PARTS & FEATURES

**COOL TOUCH HANDLE**  
Portable and stylish cool touch handle

**1000W HEATING ELEMENT**  
Instantly heats up your favorite panini or sandwich -- can also be used to grill steaks, fish, chicken chops, etc.

**2-SLICE NON-STICK COATED PLATES**  
Fast, even grilling and toasting with double-sided 10.2 x 6.7 inches contact cooking plates to achieve the grill marks desired.

**DRIP TRAY**  
Catches excess fats and liquid.

**LED INDICATOR LIGHTS**  
Easy to see

**ANTI-SKID FEET**  
For extra safety and stability



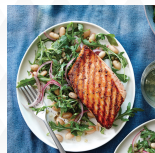
# 2-SLICE ELECTRIC PANINI GRILL

## GP0620 SERIES



### PANINI

Enjoy warm and toasty panini variations at any time



### FISH

Break out the Grilled Salmon with garlic lime butter and eat like you're on vacation!



### STEAKS

Make a hearty, flavorful and satisfying meal for a date night at home



### VEGETABLES

Try totally delish grilled vegetables at your next summer cookout.



# USING YOUR PANINI GRILL



## BEFORE FIRST USE

- Carefully unpack your Panini Grill. Remove all packaging materials.
- Place the device on a flat, level surface close to a 120 volt wall outlet.
- Wipe off both Cooking Plates with a damp cloth so that they are clean and free of any manufacturing oils that may be left on the surface.
- Wipe the outside of the Grill Housing with a soft damp cloth. NEVER immerse the grill, power cord and plug in water or any other liquid.
- Plug into the wall outlet and heat for 5 minutes. This will burn off any residue from the manufacturing process.

**NOTE:** There may be a small amount of smoke or odor during this time but it will not last longer than a few minutes.

Your Panini Maker is best used with thick, crusty breads, such as French, Italian, and focaccia. You can grill a Panini to perfection in about 3 minutes (depending on the bread, filling, and personal taste). Your Panini Maker can also be used to grill a variety of food items, such as meats, poultry, fish, and vegetables.

**Warning:** Always ensure that your Drip Cup is in place before using your Panini Press. Never use your Panini Maker without your Drip Cup in place

- 1 Preheat the grill. Your grill will not properly preheat unless the grill is in the closed position.
- 2 Close the cover and plug into a 120-volt 60 HZ AC outlet only.
- 3 The red light will turn on indicating that the appliance is preheating, and the green light will illuminate when the appliance is preheated and ready for use.
- 4 Open the lid being careful not to touch any hot surfaces such as the housing or grill plates. We recommend the use of oven mitts or potholders to prevent the risk of injury.
- 5 Place items to be cooked on the bottom grill plate.

- 6** Lower the cover and cook the food according to desired temperature or doneness. Do not apply excessive force to close the lid.

Note: The green ready light is thermostatically controlled and will cycle on and off during cooking to ensure that the correct temperature is maintained.

Important: Grill only with the lid in the closed position.

- 7** When you have finished using your appliance, disconnect the plug from the wall and allow the unit to cool down completely before cleaning.



## PANINI GRILL TIPS

- ★ Always preheat the Grill until the Green “Ready” Light illuminates.
- ★ It is not necessary to use butter or margarine on the outside of sandwiches although a thin coating of butter or margarine on the outer surfaces of the bread will speed up browning and enhance flavor.
- ★ Most types of bread can be used. Breads with high sugar content will brown more quickly.
- ★ DO NOT use fresh fruit in fillings.
- ★ DO NOT use non-stick cooking sprays.
- ★ Sandwich filling can get very hot. Be careful when biting into sandwiches.
- ★ Unplug from outlet and allow grill to cool completely before disposing of drippings that have accumulated in the drip tray.





# PANINI GRILL CARE & MAINTENANCE

- Unplug the Grill from the wall outlet and allow it to cool completely.
- Wipe the Cooking Plates with a sponge or cloth dampened in warm soapy water.
- Always dry plates thoroughly after cleaning. To remove stubborn stains or food, use a nylon brush or other utensil safe for nonstick surfaces.
- Do not use steel wool or scouring pads. Do not use abrasive cleansers.
- Wipe the exterior with a clean, damp cloth. Dry all parts thoroughly before using again or storing.
- DO NOT USE ABRASIVES OR METAL UTENSILS.
- DO NOT IMMERSE GRILL HOUSING IN WATER OR ANY OTHER LIQUID.



## ELECTRICAL REQUIREMENTS

Voltage : 120V

Power: 1000W

Hertz: 60Hz

2-SLICE ELECTRIC  
**PANINI GRILL**  
GP0620 SERIES





# OVENTE WARRANTY

Register your product within 30 days of purchase to activate its one-year limited manufacturer's warranty at  
**[ovente.com/register](https://ovente.com/register)**

**NOTE: WARRANTY IS ONLY VALID IF YOU REGISTERED WITHIN 30 DAYS AFTER PURCHASE.**

## LIMITED ONE (1) YEAR WARRANTY:

Your product has a one (1) year warranty period from the date of purchase from an authorized retailer. In the event that the product is defective, feel free to contact us to arrange for a replacement. This warranty only covers defects in workmanship and materials. The warranty does not include damage due to abuse or misuse, any commercial use, or accidents.

## LIMITATIONS

The warranty stated above is the only warranty applicable to this product. Other expressed or implied warranties are hereby disclaimed. No verbal or written information given by the manufacturer, its agents, or employees shall create a guarantee or in any way increase the scope and duration of this warranty. Repair or replacement as provided under this warranty is the exclusive remedy of the consumer. The manufacturer shall not be liable for incidental or consequential damages resulting from the use of this product. Any implied warranty of merchantability or fitness for a particular purpose on this product is limited to the applicable warranty period set forth above except to the extent prohibited by law. Consumer rights may vary from state to state.

**Customer Support: [ovente.com/support](https://ovente.com/support)**  
**Visit us at [ovente.com](https://ovente.com)**

**OVENTE®**

*Defining Housewares*