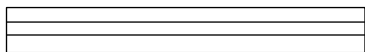
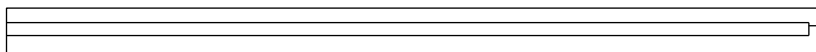
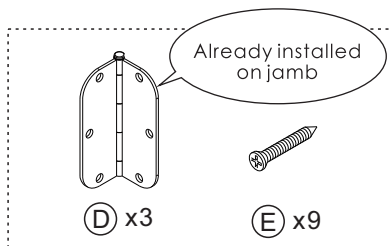


Pre-hung Door Installation Guide

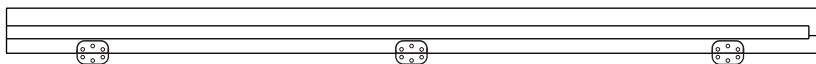
What's included



Ⓒ x1



Ⓑ x1



Ⓐ x1

Tools Required

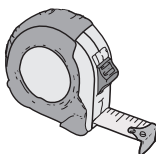
Speed Square



Phillips Screwdriver



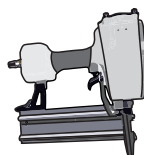
Tape Measure



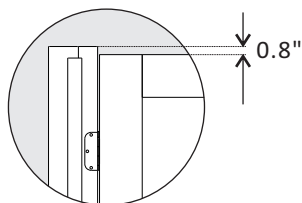
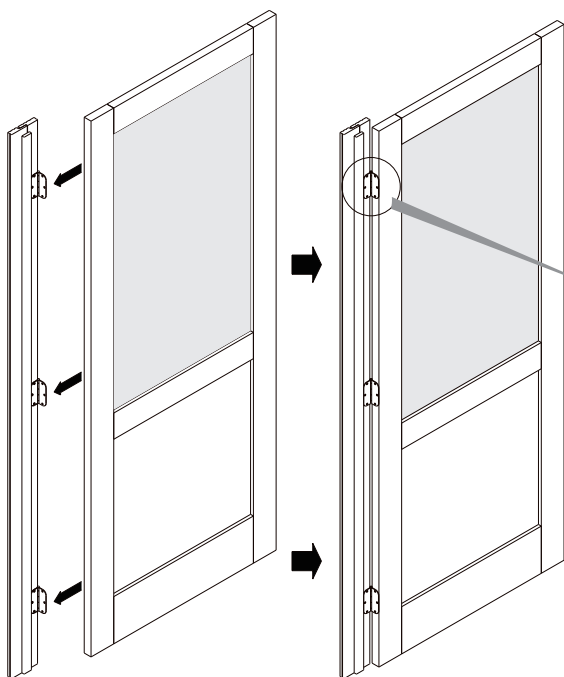
Pencil



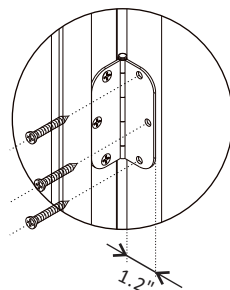
Nail Gun



Step ① Attach Door to Jamb



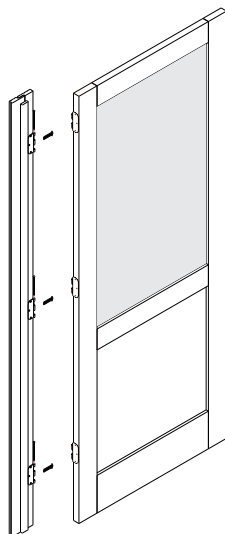
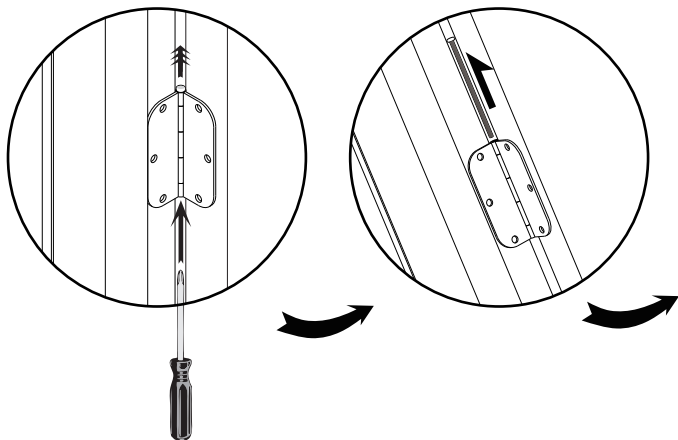
Pro tip: Leave a 0.8" space from the top of the jamb to the top of the door. This space is for the upper jamb.



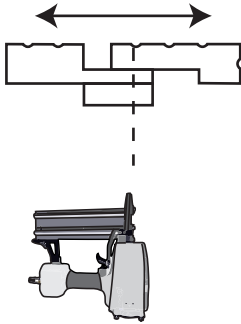
Pro tip: The edge of the hinge should be 1.2 inches from the edge of the door. This will leave enough room for the door to swing. There's no need to groove on the door as we have already taken into consideration the thickness of the hinge.

Step ② De-attach Door and Jamb

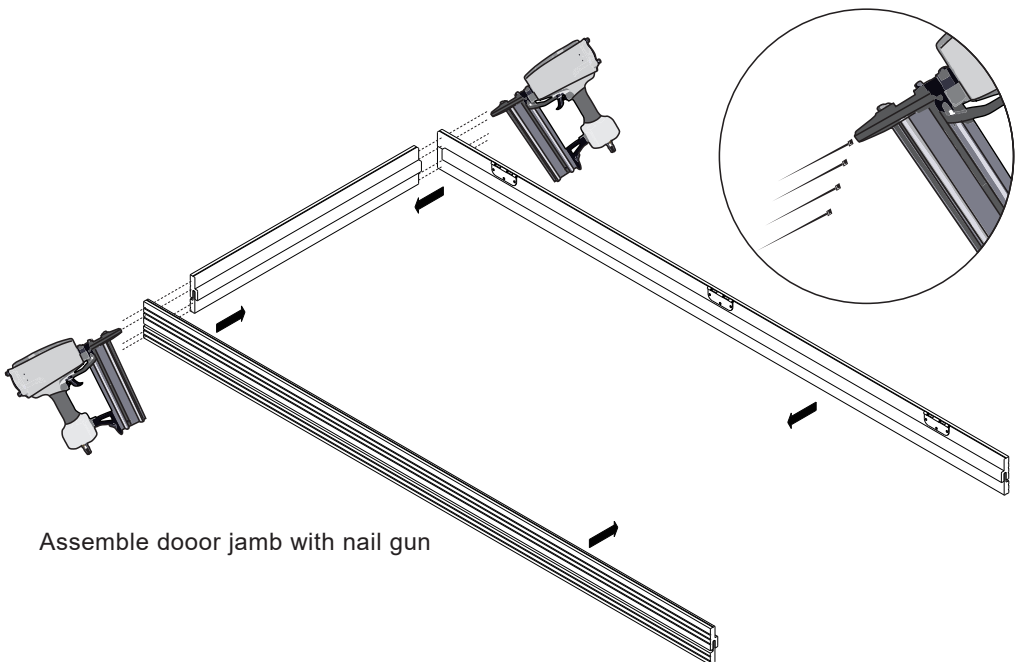
Pro tip: A solid door is heavy, so we advise you to install the door jamb first and then attach the door for safety. It's easier to re-attach the door when half of the hinge has already been installed on the door.



Step ③ Assemble Jamb Kit



Our door frame is adjustable in width to fit different wall thicknesses. Please adjust the frame to the desired width and secure it with a nail gun. Replicate this step for all 3 frames



Assemble door jamb with nail gun

Step ④ Install Jamb to the Opening, and Re-attach the Door

