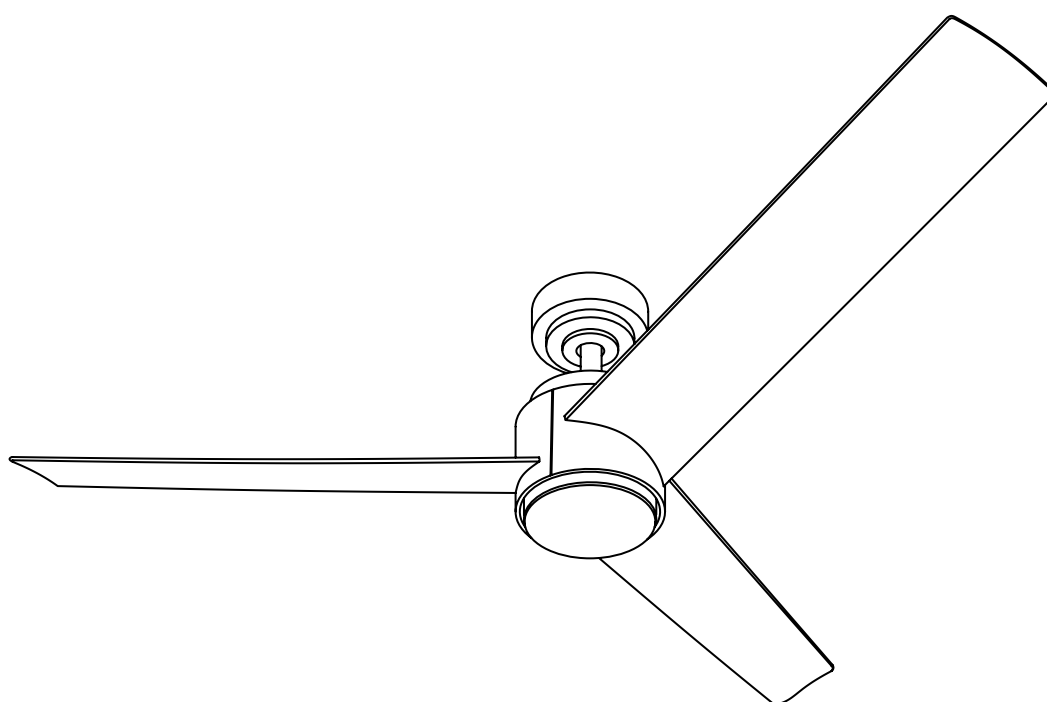


Ceiling Fan and Light Instruction Manual



Make A House Home

Preface

Vonlucce is a team of dedicated home enthusiasts with a mission to offer you high-quality products at affordable prices, all from the comfort of your own home. Our goal is to transform your house into a place you truly call home.

We are committed to delivering an exceptional customer service experience, along with a diverse selection of quality products, all available at reasonable prices.

To ensure successful installation, please read this manual carefully before starting your work. For the latest PDF version, scan the left QR code using the appropriate app on your smartphone. For video form, go to our **YouTube** channel **Vonlucce** and search for “CFN 1316 GB” or simply scan the right QR code.

Digital Manual



Installation Video



Contents

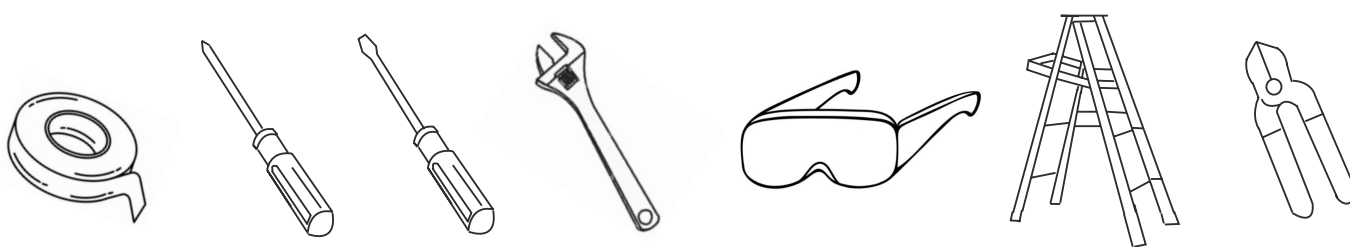
Introduction.....	1
Package List.....	2
Safety Information	3
Preparation.....	4
Installation.....	5
Mounting Bracket.....	6
Fan Blades	6
Downrod and Motor	6
Wiring	10
Canopy	11
Light.....	12
Remote Control Operation.....	13
Troubleshooting	24
Disposal.....	25
Customer Support and Policies	26

Introduction

Before beginning installation of this product, read the package list on Page 2 and ensure all parts are present and display no defects. If any part is missing or damaged, contact customer service and do not attempt to install the product. Read all of the safety information on Page 3 before installation or use.

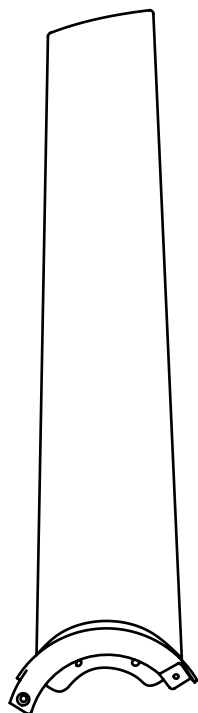
Estimated assembly time: 120 minutes

Additional tools required for assembly: Electrical tape, flathead & Phillips screwdriver, adjustable wrench, pliers, safety glasses, ladder, and wire strippers

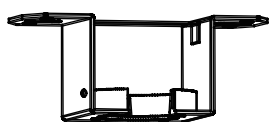


Additional helpful tools: AC tester light, tape measure, wiring handbook, and wire cutters

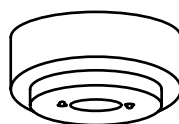
Package List



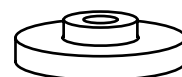
Fan Blades (×3)



Mounting Bracket



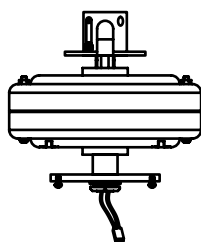
Canopy



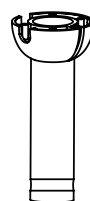
Coupling Cover



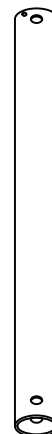
Grommet



Fan Motor Assembly



5" Downrod



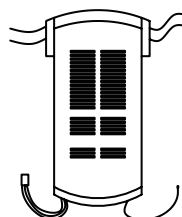
10" Downrod



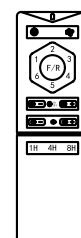
Shade



LED Light Kit



Receiver



Remote Control



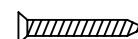
Mounting Screws (×4)



Spring Washers (×4)



Flat Washers (×4)



Steel Screws (×2)



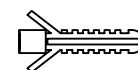
Mounting Bolts (×2)



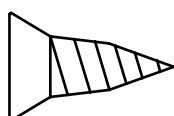
Star Washers (×2)



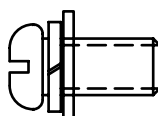
Wire Nuts (×4)



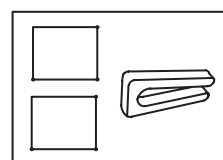
Plastic Anchors (×2)



Blade Screws (×3)



Blade Bolts (×7)



Balance Kit

Safety Information

Warning!

1. To reduce the risk of electric shock, ensure electricity has been turned off at the circuit breaker or fuse box before beginning.
2. All wiring **MUST** be in accordance with national and local electrical codes. Electrical installation should be performed by a qualified licensed electrician.
3. This fan is suitable for use with solid-state speed controls.
4. To reduce the risk of personal injury, **ONLY** use the fasteners provided with the junction box for mounting to the junction box. Most junction boxes commonly used for the support of lighting fixtures are **NOT** acceptable for fan support and may need to be replaced. Consult a qualified electrician if in doubt.

TO REDUCE THE RISK OF FIRE, ELECTRIC SHOCK, & PERSONAL INJURY, MOUNT THE FAN TO A JUNCTION BOX MARKED "ACCEPTABLE FOR FAN SUPPORT".

5. The junction box and support structure **MUST** be securely mounted to create a level surface within 10° of horizontal and **MUST** be capable of reliably supporting a minimum of 50 pounds (23 kg). **ONLY** use UL listed junction boxes marked "**FOR FAN SUPPORT**".
6. After electrical connections are completed, spliced conductors should be turned upward and pushed carefully up into the junction box. The wires should be spread apart with the grounded conductor and the equipment-grounding conductor on one side of the junction box.
7. The fan **MUST** be mounted with a minimum clearance of 7 feet (2.5 m) from the trailing edge of the blades to the floor.
8. **DO NOT** use the reverse switch while the fan blades are in motion. To prevent damage and ensure long use, the fan **MUST** be turned off and the blades stopped before reversing direction.
9. **DO NOT** place objects in the path of the blades.
10. Exercise caution when working around or cleaning the fan.
11. Use a soft dry cloth to clean the fan body and blades. **DO NOT** use water or detergent.
12. The electrical diagrams provided herein are for reference only. Light kits that are not packaged with the fan **MUST** be UL listed and suitable for use with this fan. Switches **MUST** be UL general use switches. Refer to their separate instructions for proper assembly.

NEVER BEND THE BLADES FOR ANY REASON.

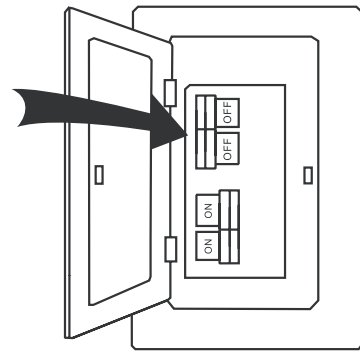
Preparation

1. Turn off Your Power

Begin installation by removing fuses or turning off circuit breakers to the wiring you will be using. Use your compatible UL listed junction box if you already have one installed.

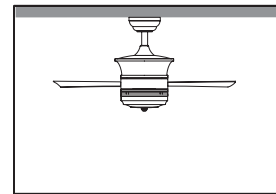
Warning

Failure to disconnect the power supply prior to installation may result in serious injury or death.

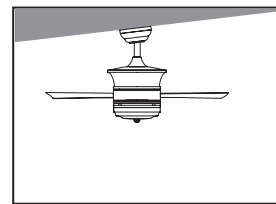


2. Choose Your Mounting Position

If you need to install a new UL listed junction box, secure it directly to your building's structure using appropriate fasteners and materials. **DO NOT** use plastic boxes. The junction box and its supports **MUST** be able to support the **MOVING** weight of the fan (at least 50 lb. or 23 kg) and be rated for fan support. The junction box should create a level surface for the fan that is **NOT** sloped greater than 10 degrees from horizontal in any direction.



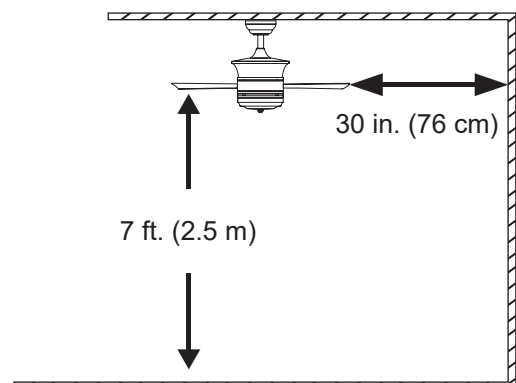
Use **ONLY** on Flat Ceilings ($\pm 10^\circ$)



DO NOT Use on Steep Slopes

3. Choose a Suitable Location

Ensure the blades will be at least 30 inches (76 cm) from any obstruction and at least 7 feet (2.5 m) above the floor. In locations without a ceiling joist, a hanger support bar may be required. **DO NOT** install in damp locations.



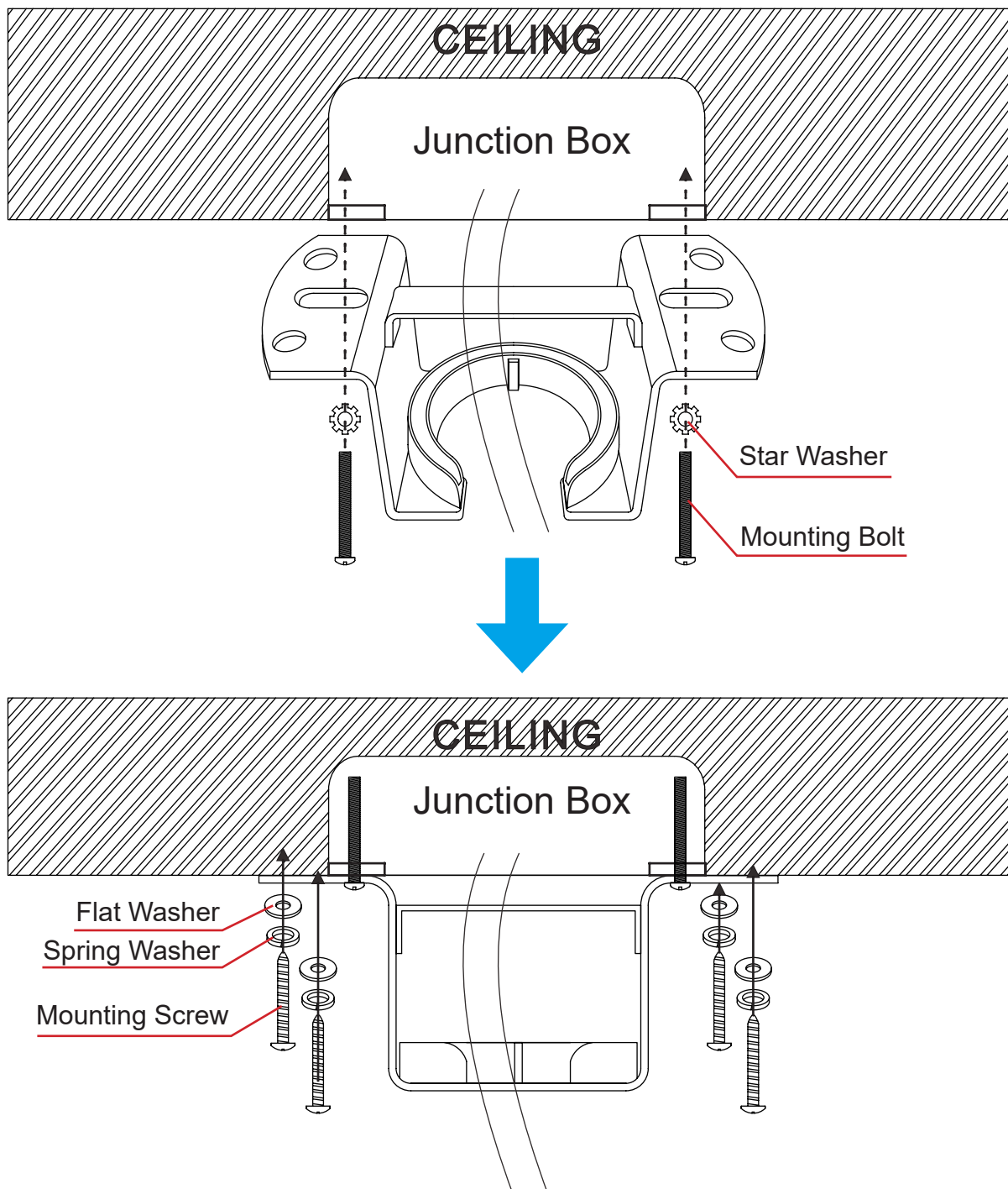
Installation

Mounting Bracket

1. Pass the supply wires through the central hole of the mounting bracket.
2. Secure the mounting bracket to your junction box with appropriate fasteners.

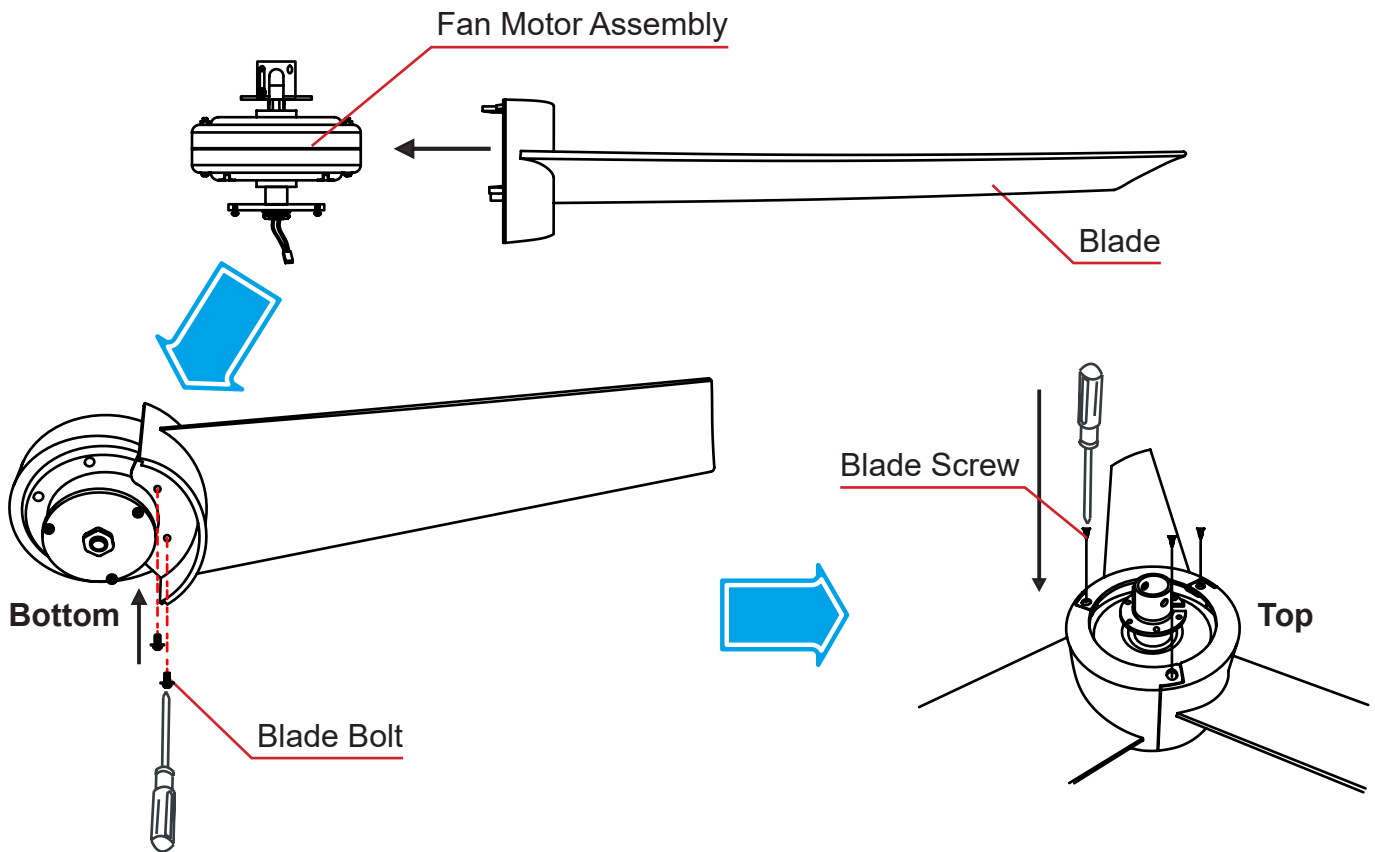
For wood or other thinner and weaker ceilings, partially fasten the bracket using the mounting bolts and star washers. Then, use the mounting screws and flat & spring washers to secure the bracket into place, adding matching plastic anchors (not included) if necessary.

For reinforced concrete or similar ceilings, use anchor bolts (not included).



Fan Blades

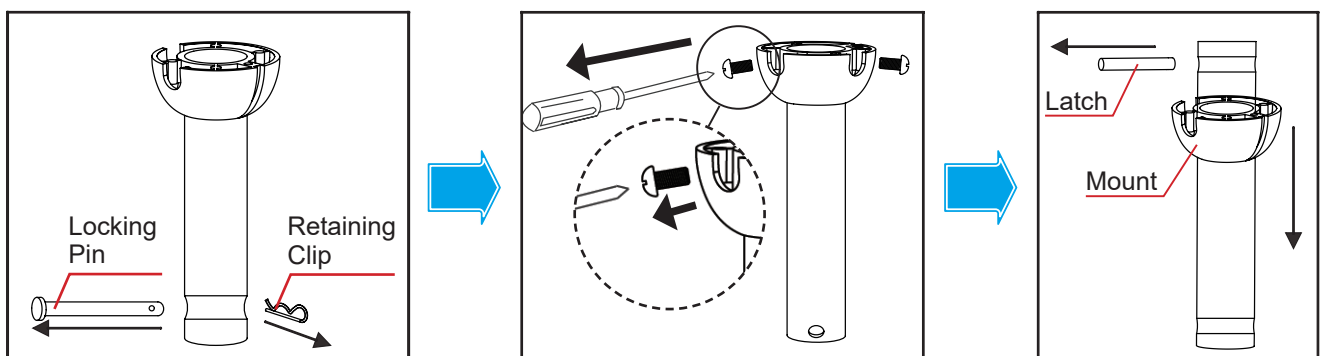
1. Fit the blades on the fan motor assembly, aligning their holes.
2. Making sure the blades are straight, attach the blade bolts to secure them to the assembly's bottom.
3. Use the blade screws to secure the blades to the assembly's top side as shown.



Downrod and Motor

Disassembling the 5" Downrod Kit

1. Remove the retaining clip and locking pin from the lower part of the 5" downrod.
2. Unscrew the two Phillips bolts from the mount of this downrod.
3. Slide down the mount away from this downrod.
4. Pull the latch out of the upper slot of this downrod.

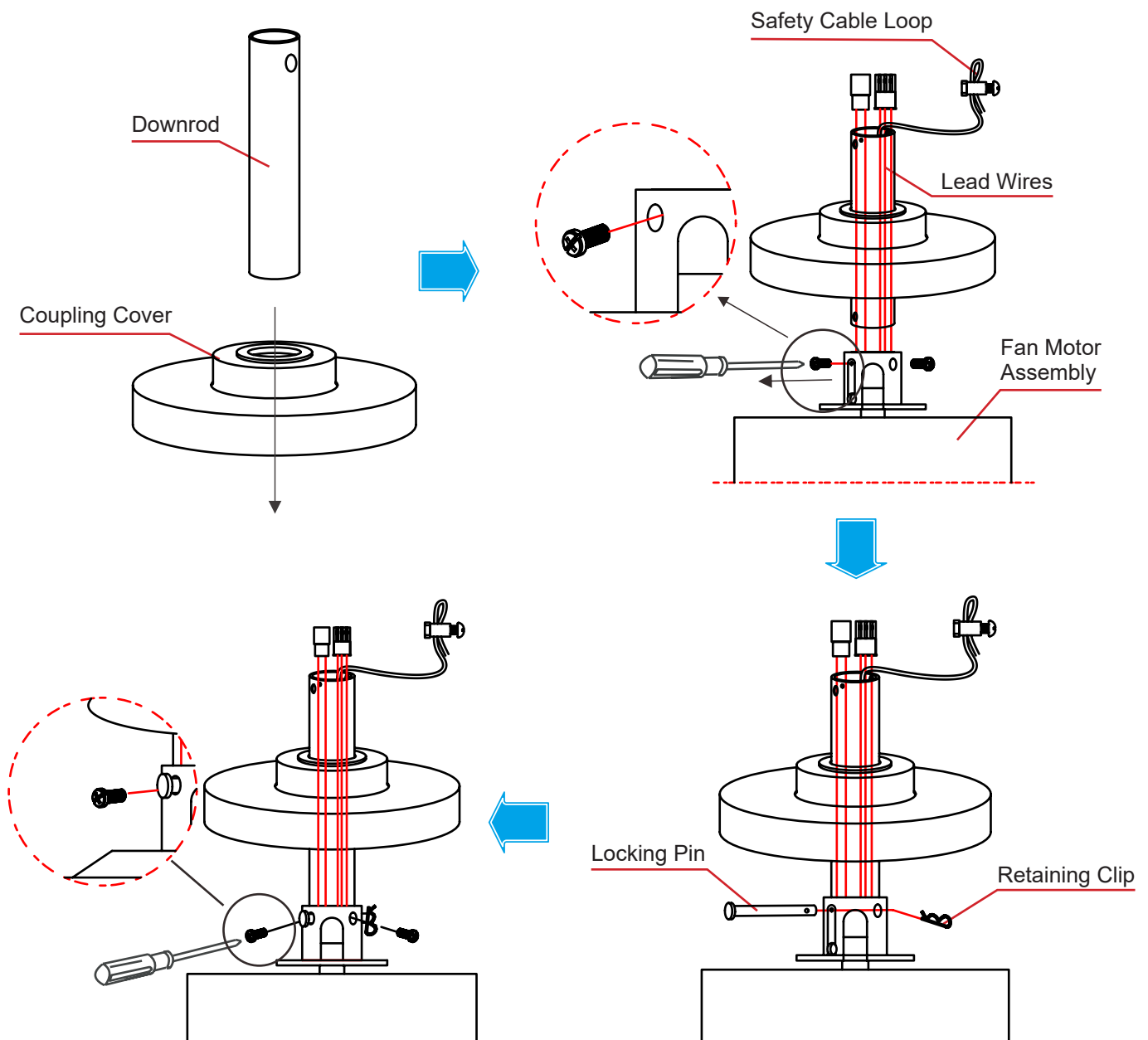


Attaching a Downrod to the Motor

1. Select either the 5" or the 10" downrod to match the height of your ceiling. Then, pass the downrod through the coupling cover as shown.
2. Feed the lead wires and safety cable loop from the fan motor assembly through the downrod.
3. Loosen the two Phillips bolts at the top of the fan motor assembly.
4. Fit the downrod onto the motor's top, aligning their slots.
5. Partially fasten the downrod by replacing the previously removed locking pin and retaining clip.
6. Retighten the previously loosened bolts until the downrod is locked into place.

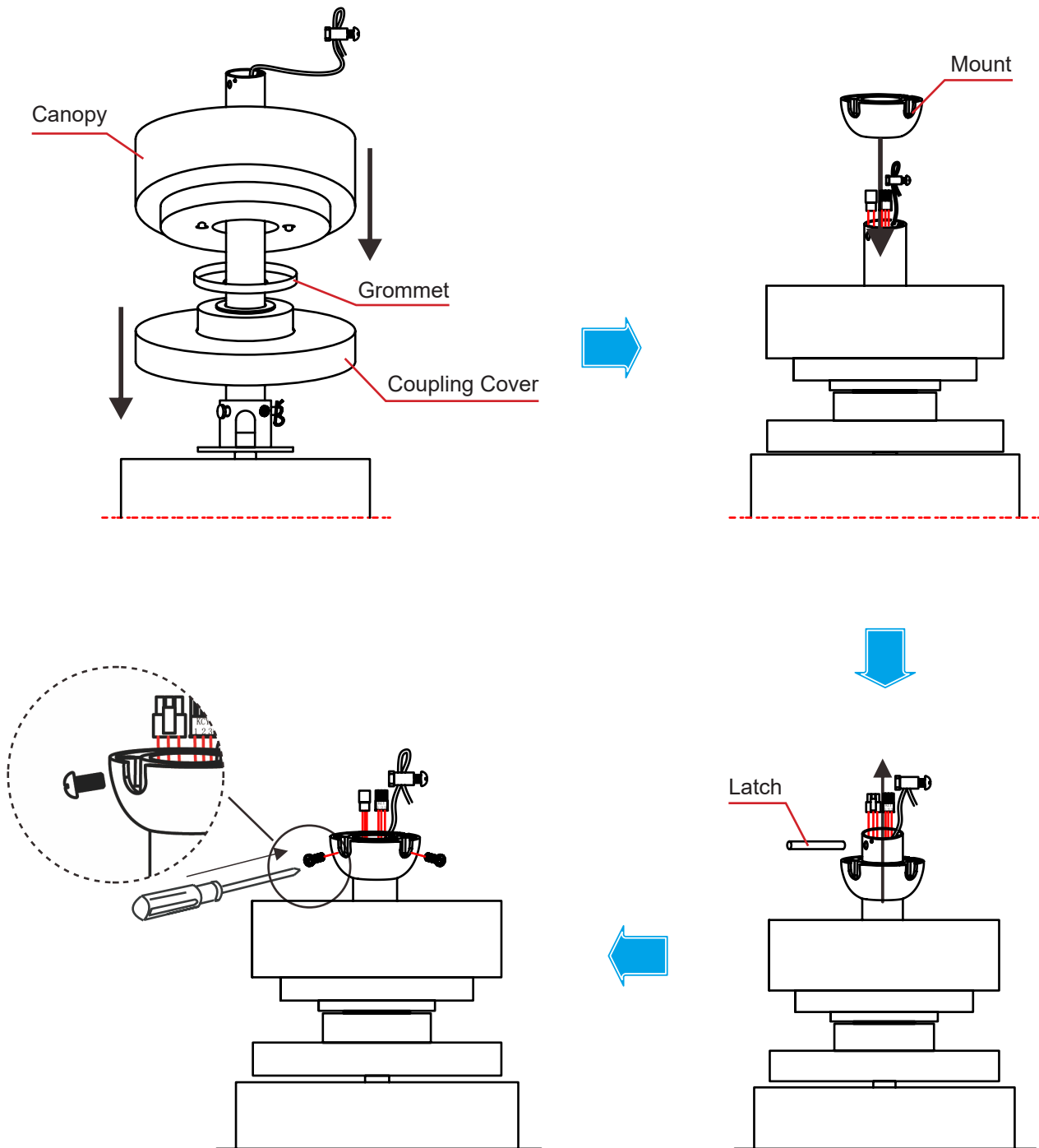
Warning

Failure to reattach the locking pin and retighten the Phillips bolts can cause the fan to fall from the ceiling during operation.



Reassembling the Downrod Kit

1. Slide down the coupling cover. Place the grommet and canopy onto the downrod's top and then slide them to the coupling cover as shown.
2. Replace the downrod's mount, passing the lead wires and safety cable loop through it.
3. Insert the removed latch back into the downrod's upper slot.
4. Slide up the downrod's mount, rotating until the latch is firmly seated inside the mount.
5. Replace and tighten the removed Phillips bolts onto the mount.

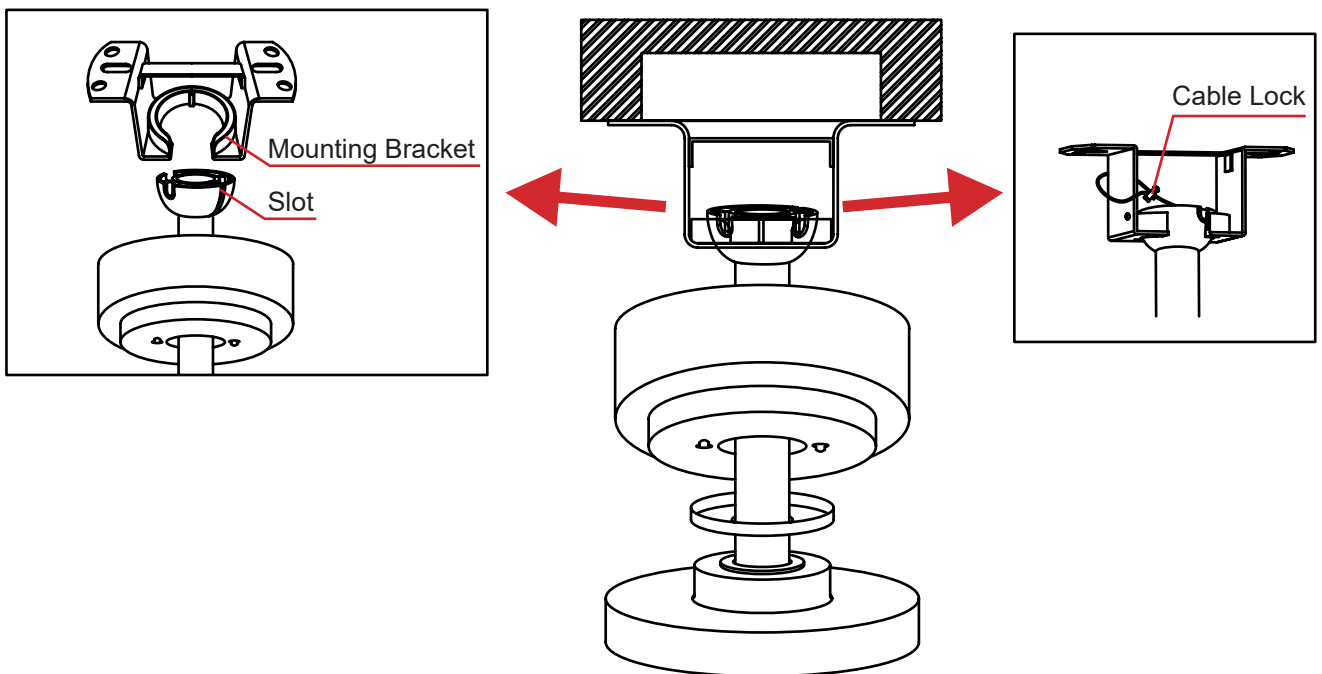


Hanging the Downrod and Motor

1. Release the cable lock by loosening its Phillips bolt. Unwind the safety cable loop, wrap the cable around the mounting bracket, and thread it back through the lock. Retighten the bolt to re-secure the lock.
2. Place the downrod's mount onto the mounting bracket. Rotate the entire assembly until the tab has dropped into the mount's slot and locked firmly into place. The motor assembly should no longer rotate if seated properly.

Warning

*Failure to re-secure the cable lock and properly seat the downrod can cause the fan to fall from the ceiling during operation. **DO NOT** use the fan before ensuring it is properly secured and the motor cannot rotate.*



Wiring

Warning

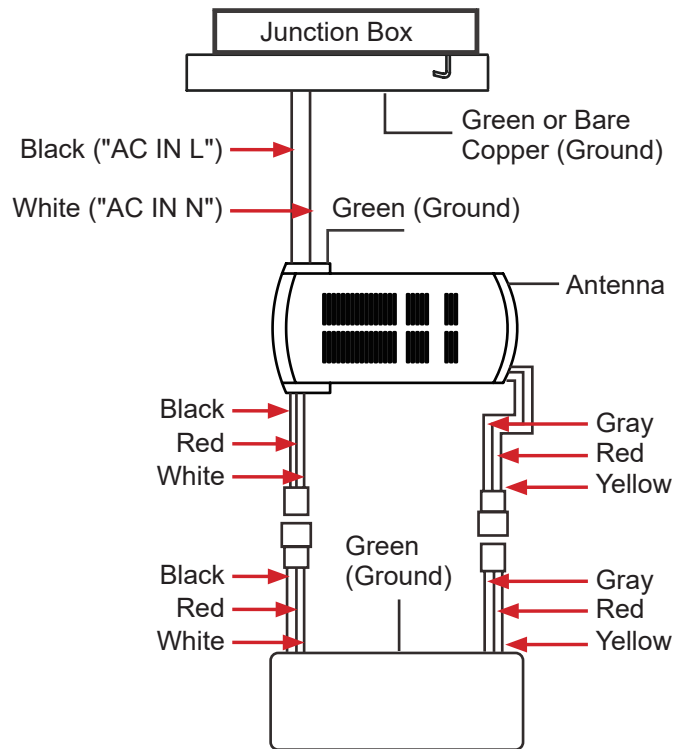
Again, ensure that the power has been cut before working with the wiring. Use the wire nuts provided with your fan. Ensure there are no loose wires or connections and secure connectors with electrical tape.

1. Connect the plugs of the receiver to those from the fan motor assembly as shown.
2. Connect the wires.

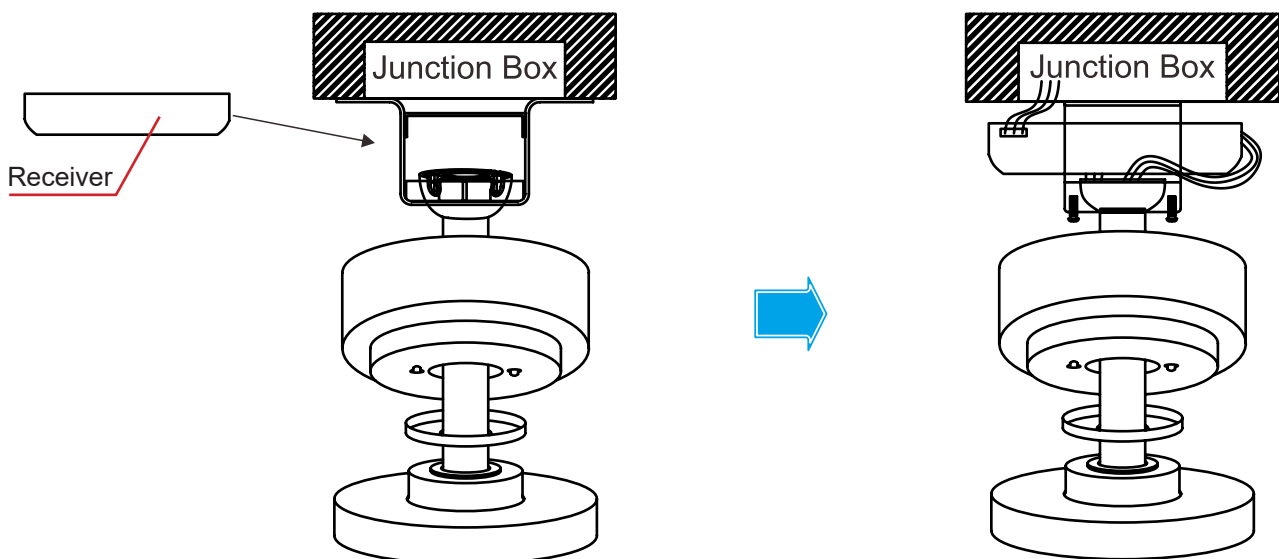
- a. Connect the 2 colored wires of the receiver to the 2 identically colored wires from the junction box.

Secure each set with the provided wire nuts, ensuring they are securely fastened by gently tugging on each connection.

- b. Connect the green or bare copper ground wire from the junction box to the fan's green ground wires.
- c. Separate the white and green wire connections from the black wire connection, which should be kept on the opposite side of the junction box.

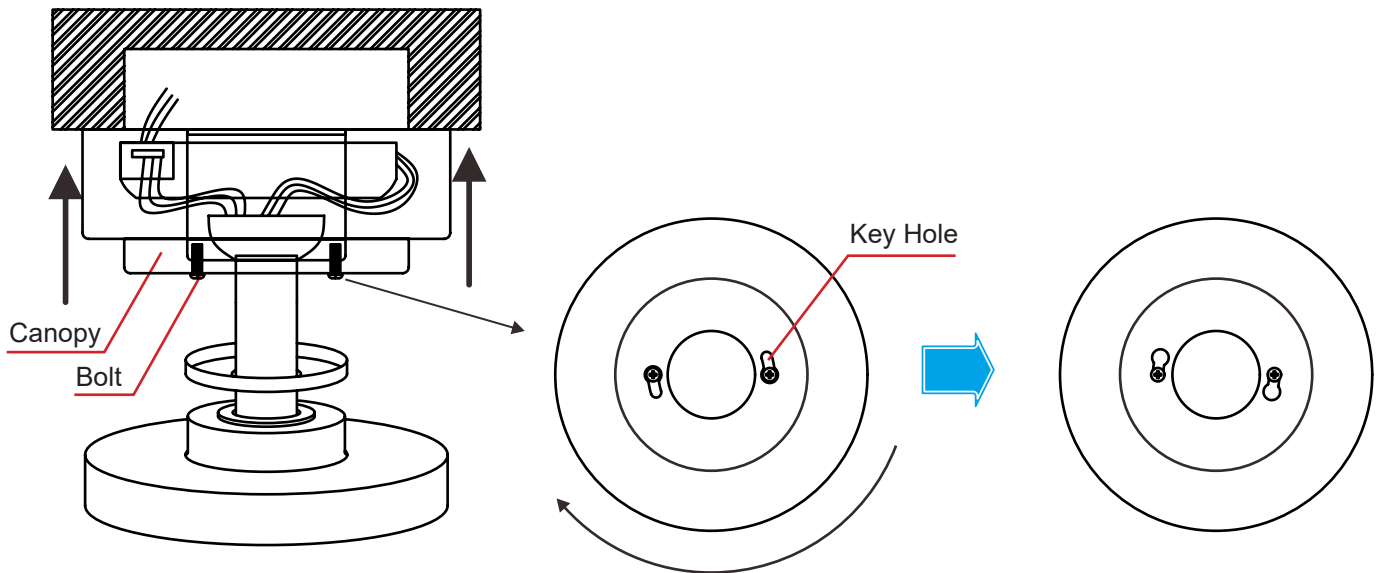


3. Insert the receiver into the tray at the top of the fan motor assembly, ensuring it faces the ceiling and its white antenna remains extended and not tangled with any of the electrical wires.
4. Tuck all wire connections neatly into the junction box.

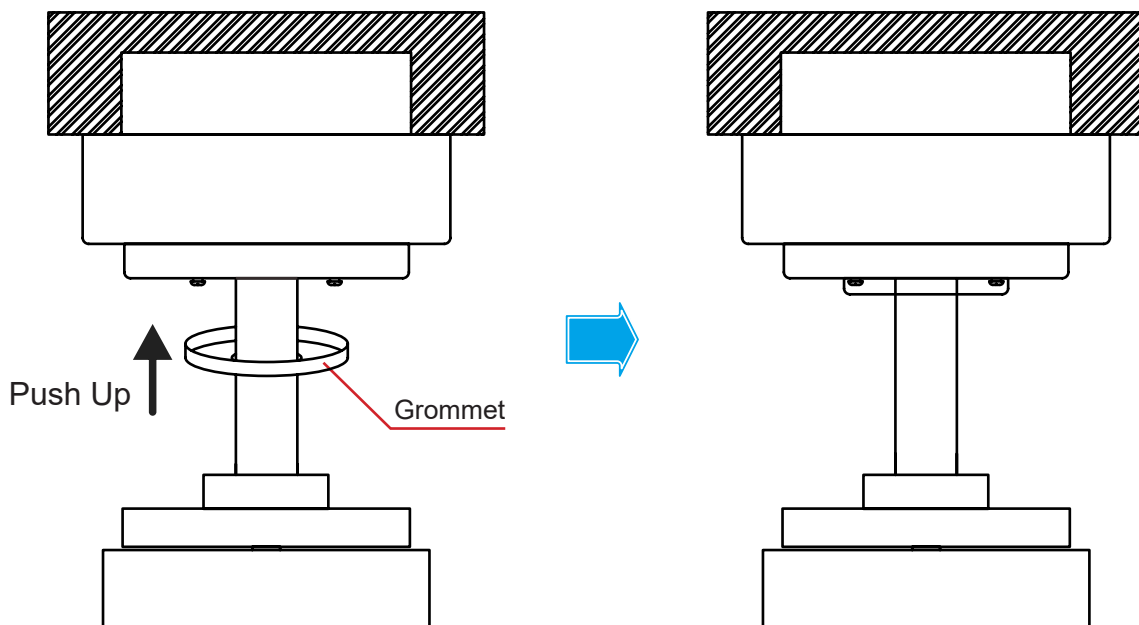


Canopy

1. Slide the canopy up to the mounting bracket and place the key holes over the bolts preinstalled on the bracket. Rotate the canopy until the bolts' heads lock in place at the narrow sections of the key holes. Tighten these bolts as needed.

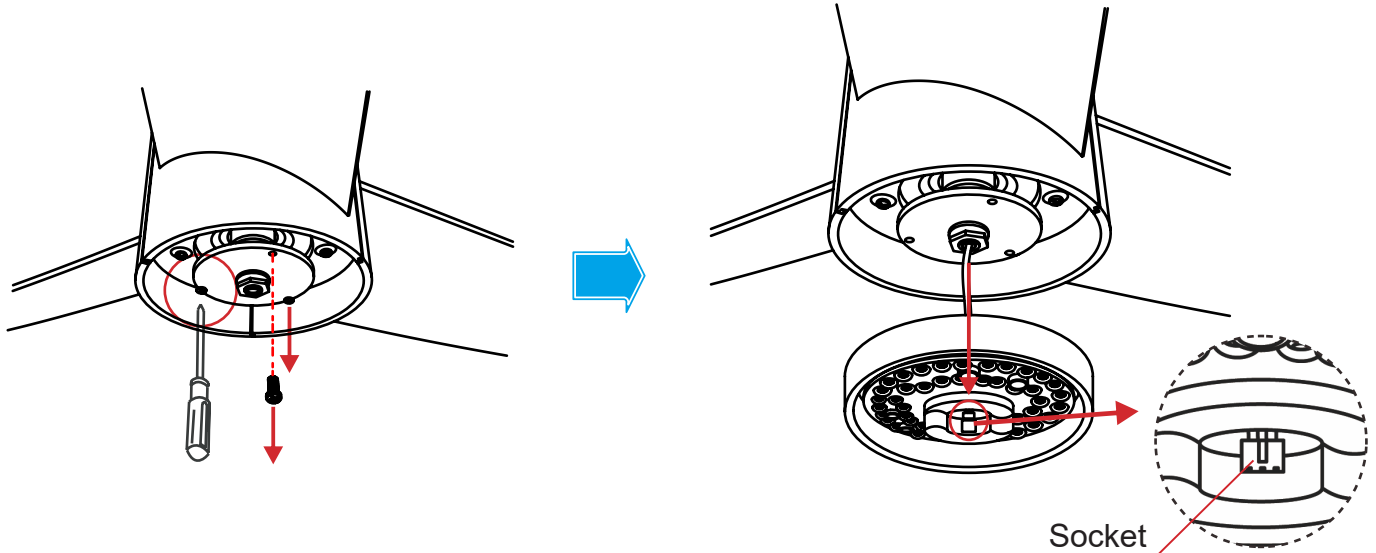


2. Attach the grommet to the bottom of the canopy using its magnets.

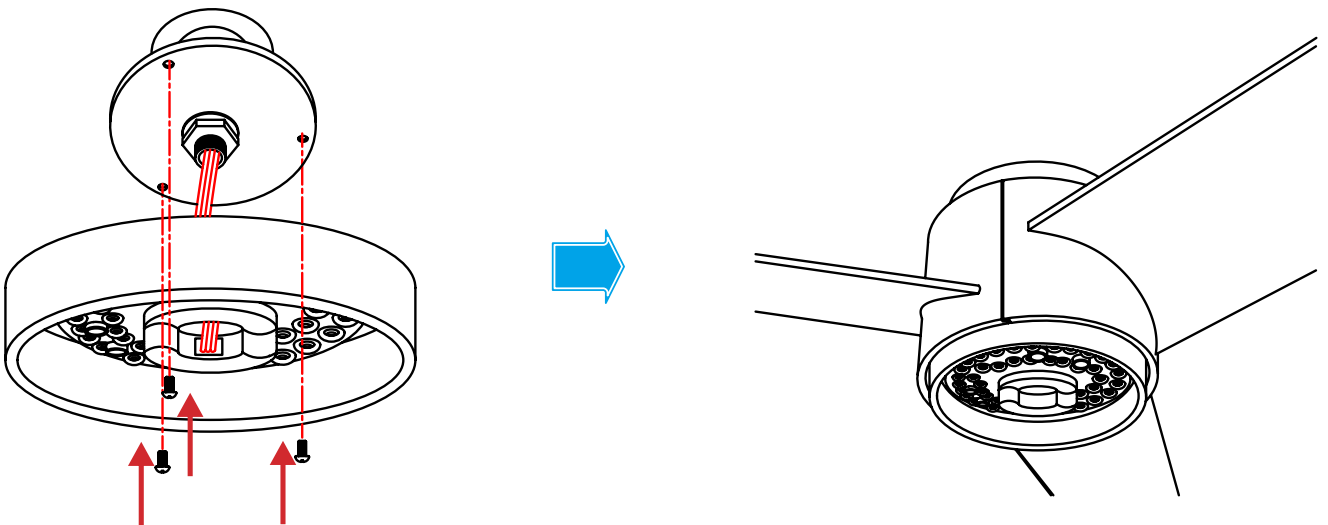


Light

1. Remove the bolts from the bottom of the fan motor assembly.
2. Feed the wire plug of the fan motor assembly through the middle of the LED light kit.
3. Connect the wire plug to the socket on the LED light kit.



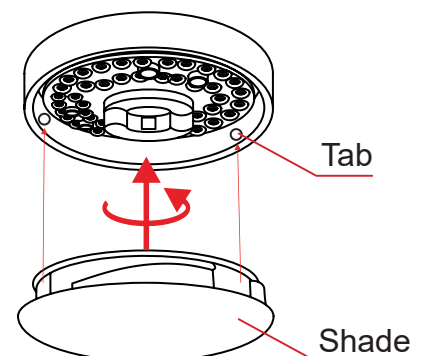
4. Position the light's mounting plate against the motor, aligning their holes.
5. Replace and tighten the removed bolts to secure the LED light kit into place.



6. Fit the shade onto the LED light kit, rotating until it sits well on the tabs of the light plate.

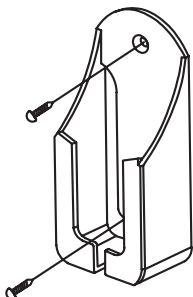
Caution

Ensure the shade is firmly connected to avoid loosening during use.

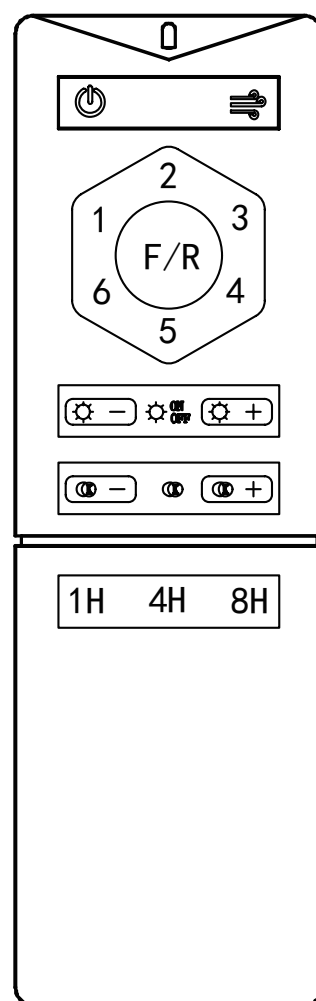


Remote Control Operation

If needed, install the remote control holder onto a wall or any other suitable flat surface using appropriate fasteners. For wood or other thinner and weaker surfaces, use the provided steel screws and plastic anchors. For reinforced concrete or similar surfaces, use anchor bolts for best results.



Key	Function
	Turns the fan off
	Runs the fan in preset mode, alternately upshifting and downshifting the speed level (when pressed); mutes or unmutes the function buttons (when held for 5 seconds)
1–6	Runs the fan at the indicated speed level from low (1) to high (6)
F/R	Reverses the fan's direction
ON/OFF	Turns the LED light on or off
	Increases the brightness of the LED light
	Decreases the brightness of the LED light
	Toggles the LED light's color temperature among the coolest (6500K), medium (4500K), and warmest (3000K) settings and then adjusts to the lowest brightness level while retaining the warmest (3000K) color temperature
	Increases the color temperature of the LED light
	Decreases the color temperature of the LED light
1H	Runs the fan for 1 hour and then turns it off
4H	Runs the fan for 4 hours and then turns it off
8H	Runs the fan for 8 hours and then turns it off



Warning


DO NOT press *F/R* to reverse the fan's direction while the fan is turning. Wait for it to stop completely before changing the direction of its rotation.

This remote operates within a range of 30 feet (10 m) using two 1.5V AAA batteries (not included). If the remote will not be used for a prolonged period, it is recommended to remove the batteries for better service life.

Troubleshooting

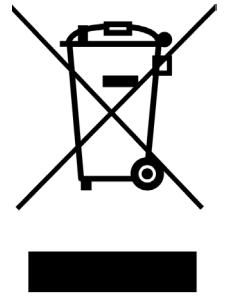
Caution

DO NOT bend the blade during **ANY** of the following procedures.

Potential Problems	Common Solutions
Fan blades don't rotate.	Reconnect the fan to power. Within 10 seconds, hold  until you hear 3 consecutive beeps to successfully pair the remote control.
	Check fuses and/or circuit breakers and reset if needed.
	Cut off power to the fan and check its internal electrical connections.
	Replace the remote control's batteries.
	Check that the fan cover is correctly placed and no fasteners interfere with the movement of the blades.
	Contact customer service to replace a faulty remote control.
Fan is too noisy.	Check that all fasteners are well tightened.
	Ensure the canopy housing has a short distance between itself and the ceiling.
	Upon initial installation, allow 24 hours of use for the machine to break itself in.
	Cut off power to the fan and check that the wire nut connections are not rubbing against one another or the inner housing.
	If you have installed a solid-state variable-speed control, cut off power to the fan and disconnect this control from the device. See if using the remote resolves the problem, which can be caused by erratic signals from such controls.
Fan wobbles during use.	Check that all fasteners are well tightened.
	Use the provided blade balancing kit to adjust the blades if their tips are found to be an unequal distance from the ceiling while well fastened.
	Exchange the position of the various blades.
The receiver beeps during the adjustment of the LED light's brightness or color temperature	When the light is at its highest brightness or coolest color temperature, the receiver will beep if you further increase either value. When the light is at its lowest brightness or warmest color temperature, the receiver will beep if you further decrease either value. Stop such further adjustments and the beep will cease. This is normal and needs no repair.
	Contact customer service or a trained technician for inspection, repair, or replacement of any problematic part.

Disposal

Electrical products should not be disposed of with household products. In the EU and UK, according to the European Directive 2012/19/EU for the disposal of electrical and electronic equipment and its implementation in national laws, used electrical products must be collected separately and disposed of at the collection points provided for this purpose. Locations in Australia, Canada, and the United States may have similar regulations. Contact your local authorities or dealer for disposal and recycling advice.



Customer Support and Policies

30-Day Return Policy

We offer a 30-Day Return Policy to ensure your satisfaction. If you're not happy with your purchase, contact our customer service within 30 days of purchase to initiate the return process. Please return the item in its original condition with all the packaging and accessories. Once we receive it, we'll promptly process your refund, making the return hassle-free and smooth. Your satisfaction is our priority.

1-Year Warranty

Enjoy peace of mind with our 1-Year Warranty. Your product is covered against material and workmanship defects for a full year from the purchase date. If any issues arise, contact our customer service, and we'll quickly address them. Again, your satisfaction is our priority.

Guaranteed Response Within 24 Hours

We are dedicated to ensuring your satisfaction. At Vonlucce, no inquiries are left unanswered for more than 24 hours. We treat each inquiry with the utmost seriousness, going above and beyond to provide a satisfactory response.

Contact Us

Thank you for choosing our products! If you have any questions or comments, contact us at **contact@b2ccspro.com** and we'll resolve your issue ASAP!

For a .pdf copy of the latest version of these instructions, use the appropriate app on your smartphone to scan the QR code to the right.

