

Catalog Number
Notes
Type

## FEATURES & SPECIFICATIONS

### INTENDED USE

This fresh and innovative track head combines aesthetics with superior functionality for applications such as specialty retail, hospitality, residential multi-family and educational environments.

### CONSTRUCTION

This unique "Square" design track head with integral electronic driver is made of die cast aluminum. Kit includes (1) 44" track (120V), (1) floating feed, and (3) LTIHSQ integrated dimmable LED adjustable track heads.

Tilt: 60 degrees

Pan: 350 degrees

Expected life: 33,000 hours - L70 lumens depreciation design criteria.

Lumen output: 500 lumens, 40° beam angle per head

Equivalent to a 50W Halogen per head

Color temperature (CCT): 2700 K

CRI: 90

### ELECTRICAL

120 VAC 60Hz, 8-watts per head

Dimmable down to 10%.

### LISTINGS

cETL<sub>us</sub> listed to UL1574 Track Lighting Standard.

ENERGY STAR® certified.

Dry location.

### WARRANTY

5-year limited warranty. Complete warranty terms located at:

[www.acuitybrands.com/CustomerResources/Terms\\_and\\_conditions.aspx](http://www.acuitybrands.com/CustomerResources/Terms_and_conditions.aspx).

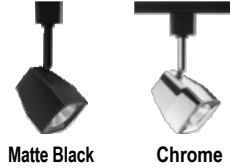
**Note:** Actual performance may differ as a result of end-user environment and application.

All values are design or typical values, measured under laboratory conditions at 25°C.

Specifications subject to change without notice.

## Decorative Track Lighting LTIKSQ SERIES

Integrated LED Track Kit



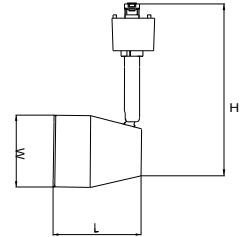
Matte Black

Chrome



Specifications		
Width	Length	Maximum height
2-5/8	3-1/8	6-1/4

All dimensions are inches (centimeters) unless otherwise indicated.



44" track (120V)  
(included)



LTNFC - floating feed  
(included)



LTIHSQ 90CRI (qty 3) -  
integrated dimmable LED  
adjustable track heads  
(included)

### ORDERING INFORMATION

All configurations of this product are considered "standard" and have short lead times.

Example: LTIKSQ LED 27K 90CRI MW

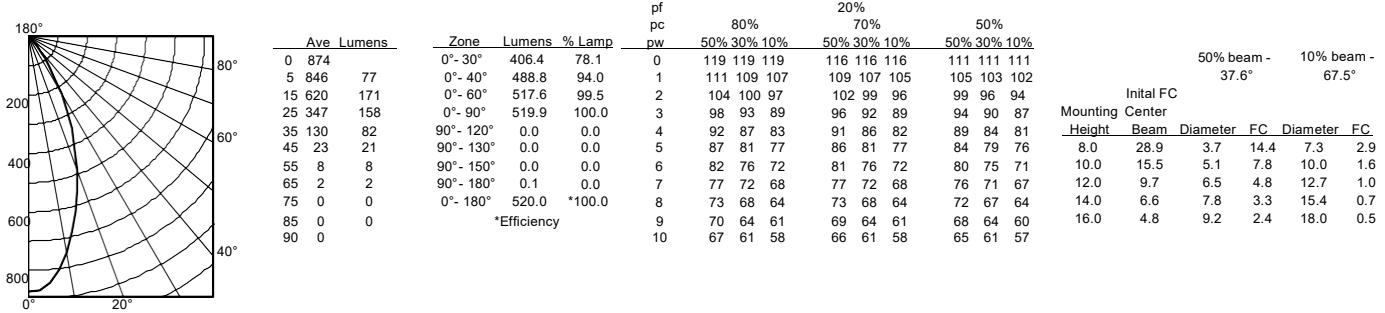
Series	Lumen Output/Max Wattage	Color Temperature	CRI	Finish
LTIKSQ Integrated LED "Square" track kit	LED 500 Lumens/8W per head	27K 2700K	90CRI 90CRI	MW Matte White DBL Matte Black CHR Chrome

# LTIKSQ LED Integrated Track Kit

## PHOTOMETRICS

Distribution Curve	Distribution Data	Output Data	Coefficient of Utilization	Illuminance Data at 30" Above Floor for a Single Luminaire
--------------------	-------------------	-------------	----------------------------	--

LTIKSQ 90CRI, 2700 K LEDs, input watts: 8, delivered lumens: 520, LM/W = 65, test no. ISF 337940, tested in accordance with IESNA LM 79-80

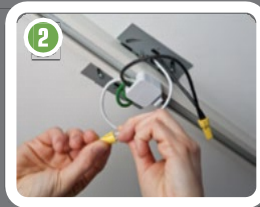


## INSTALLATION INSTRUCTIONS

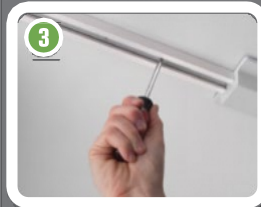
### Easy to Install in 4 Steps



1 Install mounting plate to ceiling.



2 Connect track to mounting plate and wire.



3 Attach track to ceiling.



4 Simply twist heads onto track.