

TRUSTED SINCE 1926

**BONIDE**<sup>®</sup>

# Rose<sup>®</sup> Rx 3 in 1 Concentrate



3 garden products in one

Multi-purpose fungicide,  
insecticide, miticide

**ACTIVE INGREDIENT:**

Clarified Hydrophobic Extract of Neem Oil..... 70%

**OTHER INGREDIENTS:**..... 30%

**TOTAL:**..... 100%

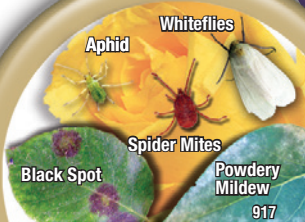
EPA Est No. 4-NY-1

EPA Reg. No. 70051-2-4

**Keep Out Of Reach Of Children**

**CAUTION** (See Back Panel for Additional  
Precautionary Statements and First Aid)

**Net Contents 16 FL OZ (473 ML)**



917



**FOR ORGANIC  
GARDENING**



# Rose R&E 3<sup>in</sup>1 Concentrate

- ✓ Multi-purpose Fungicide/Insecticide/Miticide
- ✓ For foliar control of fungal diseases and insect pests.
- ✓ Stops powdery mildew in 24 hours.
- ✓ Mix 1 fluid ounce per gallon of water
- ✓ For organic gardening

EPA Reg. No. 70051-2-4 EPA Est. No. 4-NY-1  
©Bonide Products, Inc. All Rights Reserved

BN

Distributed by:  
Bonide Products, Inc.  
6301 Sutliff Road  
Oriskany, NY 13424  
Pint



## DIRECTIONS FOR USE

IT IS A VIOLATION OF FEDERAL LAW TO USE THIS PRODUCT IN A MANNER INCONSISTENT WITH ITS LABELING.

## GENERAL INFORMATION

- Defends your roses against insects, diseases, and mites.
- Do not add adjuvants (spreaders, stickers, extenders, etc.) to this product.
- Stops powdery mildew in 24 hours.
- Kills eggs, larvae and adult insects.
- Shake well before using.
- Prevents and controls black spot on roses, anthracnose, rust and powdery mildew.
- Do not apply to wilted or otherwise stressed plants, or to newly transplanted materials prior to root establishment.
- May also be used as a dormant or delayed dormant spray to control overwintering eggs of various insects on fruit and shade trees, shrubs, roses, and other ornamentals and vegetables. Spray to visibly wet or until all plant surfaces are completely wet.
- Do not apply to known sensitive plant species, such as impatiens flowers, fuchsia flowers, hibiscus flowers, some rose flowers, ornamental olive trees, or some carnation varieties without prior testing.

## **GENERAL INFORMATION Cont.**

- As with other oil-based products, exercise care in timing applications to early morning/late evening to minimize the potential for leaf burn.
- Use with care on plants with tender tissue. Check for leaf burn in small scale trials prior to use.
- Can be used as a leaf polish on hardy plants.

## **FUNGICIDE USE**

For use on Fruits, Vegetables, Herbs, Spices, Roses, Houseplants, Flowers, Trees and Shrubs.

### **MANAGEMENT OF TURF DISEASES**

This product may be used on all turf such as Kentucky bluegrass, perennial ryegrass, turf type tall fescue, Bermudagrass, zoysiagrass, and St. Augustinegrass around the home. Refer to table for detailed application rates.

## FUNGICIDE USE Cont.

Spray Target	Concentration	Spray Interval	Precautions
Snow Mold	1:100-1:500 (1.0%-2.0%)	14 days	In Fall before first snow
Dollar Spot	1:100-1:200 (1.0%-0.5%)	7-14 days	At first sign of disease
Brown Patch	1:100-1:200 (1.0%-0.5%)	7-14 days	At first sign of disease

### APPLICATION INSTRUCTIONS

This product is an effective fungicide for the prevention and control of various fungal diseases including powdery mildew, black spot, downy mildew, anthracnose, rust, leaf spot, botrytis, needle rust, scab and flower, twig and tip blight, and alternaria. As a preventative, apply this product on a 7 to 14 day schedule until disease development is no longer present. To control disease already present, apply this product on a 7 day schedule until disease pressure is eliminated. Then continue spraying on a 14 day schedule to prevent the disease from reoccurring. To prevent rust leaf spot disease, anthracnose and scab, begin applications at the first sign of spring budding. To prevent powdery mildew, apply in mid-summer or when disease is first detected. Continue applications until disease pressure no longer exists.

## **MIXING INSTRUCTIONS**

Mix this product at the rate of 2 tablespoons (1 fluid ounce) per gallon of water. Thoroughly mix solution and spray all plant surfaces (including undersides of leaves) until completely wet. Frequently mix solution as you spray.

## **INSECTICIDE/MITICIDE USE**

For use on Fruits, Vegetables, Herbs, Spices, Roses, Houseplants, Flowers, Trees and Shrubs.

## **APPLICATION INSTRUCTIONS**

Apply this product at first sign of insects/mites. For control of aphids, spider mites, scale, whiteflies, beetles, leafrollers, and other insect pests. This product is most effective when applied every 7 to 14 days. For heavy insect populations, spray on a 7 day schedule.

## **MIXING INSTRUCTIONS**

Mix this product at the rate of 2 - 4 tablespoons (1 - 2 fluid ounces) per gallon of water. Thoroughly mix solution and spray all plant surfaces (including underside of leaves) until completely wet. Frequently mix solution as you spray.

## STORAGE AND DISPOSAL

**Pesticide Storage:** Keep in original container. Store away from direct sunlight, feed, or foodstuffs. Keep container tightly sealed when not in use. Keep from freezing.

**Pesticide Disposal and Container Handling:** *If empty* - Nonrefillable container. Do not reuse or refill this container. Place in trash or offer for recycling if available. *If partly filled* - Call your local solid waste agency for disposal instructions. Never place unused product down any indoor or outdoor drain.

## FIRST AID

<b>If on skin or clothing:</b>	Take off contaminated clothing. Rinse skin immediately with plenty of water for 15-20 minutes. Call a poison control center or doctor for treatment advice.
<b>If in eyes:</b>	Hold eye open and rinse slowly and gently with water for 15-20 minutes. Remove contact lenses, if present, after the first 5 minutes, then continue rinsing eye. Call a poison control center or doctor for treatment advice.

## **FIRST AID Cont.**

Have the product container or label with you when calling a poison control center or doctor, or going for treatment. National Pesticide Information Center: 1-800-858-7378.

## **PRECAUTIONARY STATEMENTS**

### **HAZARDS TO HUMANS AND DOMESTIC ANIMALS**

**CAUTION:** Harmful if absorbed through skin. Causes moderate eye irritation. Avoid contact with skin, eyes or clothing. Wash thoroughly with soap and water after handling and before eating, drinking, chewing gum or using tobacco. Remove and wash contaminated clothing before reuse.

### **ENVIRONMENTAL HAZARDS**

Do not apply directly to water. Do not contaminate water when disposing of equipment washwaters or rinsate. To protect the environment, do not allow pesticide to enter or run off into storm drains, drainage ditches, gutters or surface waters. Applying this product in calm weather when rain is not predicted for the next 24 hours will help to ensure that wind or rain does not blow or wash pesticide off the treatment area. Rinsing application equipment over the treated area will help avoid run off to water bodies or drainage systems.



### **BEE HAZARD**

**This product is toxic to bees exposed to direct treatment. Do not apply this product while bees are actively visiting the treatment area.**

### **WARRANTY**

Seller warrants that this product complies with the specifications expressed in this label. To the extent consistent with applicable law, Seller makes no other warranties, and disclaims all other warranties, express or implied, including but not limited to warranties of merchantability and fitness for the intended purpose. To the extent consistent with applicable law, Seller's liability or default, breach or failure under this label shall be limited to the amount of the purchase price. To the extent consistent with applicable law, Seller shall have no liability for consequential damages.