



PALM AIR NAILER

40810



⚠ WARNING

This product contains or, when used, produces a chemical known to the State of California to cause cancer and birth defects or other reproductive harm.
(California Health & Safety Code § 25249.5, et seq.)

**Actual product may vary slightly*

Please carefully read and save these instructions before attempting to assemble, maintain, install, or operate this product. Observe all safety information to protect yourself and others. Failure to observe the instructions may result in property damage and/or personal injury. Please keep instructions for future reference.

For warranty purchases, please keep your dated proof of purchase. File or attach to the manual for safe keeping.

READ ALL INSTRUCTIONS BEFORE OPERATING THE TOOL

SAVE THIS INSTRUCTION

You will need the instructions for the safety warning and precautions, assembly instructions, operating and maintains procedures, parts list and diagram. Keep your invoice with these instruction. Write the invoice number on the inside of the front cover. Keep the instructions and invoice in a safe and dry place for future reference.

SPECIFICATIONS

Characteristic	Value
Minimum Operating Air Pressure	70 PSI
Maximum Operating Air Pressure	100 PSI
Air Inlet	1/4" NPT
Tool Weight	1.87 lbs
Nail size	4-3/4" MAX

SAFETY WARNINGS & CAUTIONS

- 1. KEEP WORK AREA CLEAN.** Cluttered areas invite injuries.
- 2. KEEP CHILDREN AWAY.** All children should be kept away from the work area. Don't let them handle the tool.
- 3. DO NOT OPERATE THIS TOOL IF UNDER THE INFLUENCE OF ALCOHOL OR DRUGS.** Read warning label on prescriptions to determine if your judgment or reflexes are impaired while taking drugs. If there is any doubt, do not attempt to operate.
- 4. USE EYE PROTECTION.** Eye protection should conform to ANSI Z87.1 specifications and provide protection against flying debris from the front and side. Eye protection should be worn when loading, operating, unloading or servicing this tool.
- 5. USE EAR PROTECTION.** The working area may include exposure to high noise levels that can lead to hearing damage.
- 6. NEVER USE OXYGEN, COMBUSTIBLE GASES, BOTTLED GASES OR HIGH PRESSURE COMPRESSED GAS AS A POWER SOURCE FOR THIS TOOL.** The tool may explode and cause serious injury.
- 7. DRESS SAFELY.** Protective gloves and nonskid footwear or safety shoes are recommended when working with and operating this tool. Don't wear loose clothing or jewelry. They can get caught in moving parts. Also, wear a protective hair covering to prevent long hair from getting caught in the tool.
- 8. DO NOT FIRE TO HARD MATERIALS.** Do not attempt to discharge tool into hard or brittle material such as concrete, steel or tile.
- 9. DO NOT OVERREACH.** Keep proper footing and balance at all times.
- 10. CHECK DAMAGED PARTS.** Before using any tool, any part that is damaged should be carefully checked to determine that it operates properly and perform its intended function.

11. REPLACEMENT PARTS AND ACCESSORIES. When servicing, use only identical replacement parts. Only use accessories intended for use with this tool. Approved replacement parts and accessories are available.

12. STAY ALERT. Watch what you are doing. Use common sense, do not operate any tool when you are tired.

13. STORE IDLE EQUIPMENT. When not in use, tool should be cleaned and then stored, fully assembled, in a dry location to reduce rust. For safety, keep out of reach of children.

14. OUTDOORS EXTENSION CORDS. When air compressor is used outdoors, use only rounded jackets extensions cords intended for outside use. See manufacturer's manual for the AWG required for the compressor's amperage draw.

15. BE AWARE OF AIR HOSE AND THEIR CONNECTIONS. Don't trip over hoses. Make sure all connections are tight.

16. BE AWARE OF OTHER PEOPLE. Never point the tool at people or animals.

17. USE THE CORRECT AIR CONNECTOR. The connector on the tool must not hold pressure when the air supply is disconnected. If the wrong fitting is used, the tool can remain charged with air after being disconnected and still be able to drive a fastener.

WARNING: The warning, caution, and instructions discussed in this instruction manual cannot cover all possible conditions and situations that may occur. It must be understood by the operator that **COMMON SENSE AND CAUTION ARE FACTORS WHICH CANNOT BE BUILT INTO THIS PRODUCT, BUT MUST BE SUPPLIED BY THE OPERATOR.**

UNPACK

When unpacking, check to make sure that all the parts are included. If any parts are missing or broken, please call seller Refer to the Part Lists on page 5.

Description	Qty
Air Palm Nailer	1
S4 Hex Key	1
Air Tool Oil	1
Operating instruction	1

SETUP

Your air tool is fully assembly when you receive it. Before using it, attach the air line and desired air system accessories. See Figure 1 for the recommended accessories and connection order. Be sure the air hose is depressurized when installing or removing adapters to the air line.

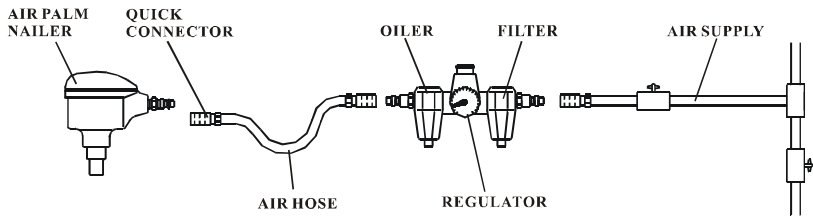


Figure 1

CONNECTING THE TOOL TO AN AIR SUPPLY

1. Determine if the tool needs oil and, if necessary, place two drops of oil in the AIR PLUG(22) as shown in Figure 2. If you are using an automatic in-line oiler, check and add oil if necessary.
2. Turn the compressor on and set the regulator to the proper pressure for the size and type of fastener being used.
3. Connect the tool to the air supply (see Setup for air supply connection recommendations).

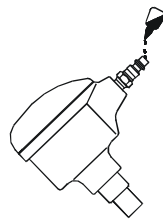


Figure 2

OPERATING THE TOOL

Your Air Palm Nailer is an Automatic Hammer. It has no trigger, it starts driving when the rod of piston assembly (9) presses against the fastener's head. It will automatically stop when the fastener's head no longer touches this piston rod. The operator need only a slight amount of pressure to activate the tool. Do not force the tool.

Test the driving depth in a sample piece of wood before using. If the fastener is being driven too far or not far enough, adjust the regulator to provide less air pressure or more air pressure.

1. Connect the tool to the air supply. Make sure the air pressure is in correct range denoted in section of SPECIFICATIONS.
2. Hold the tool firmly in straight line with the direction on which you intend to drive, located the fastener's head into the guide bushing (19), gently pushing the Air Palm Nailer against the fastener's head, the tool will automatically start driving and stop when fastener is drive in. Please note the Air Palm Nailer will countersink the fastener's head below the work surface.
3. Lift the tool off the work surface immediately after the fastener has been drive in.
4. Upon completion of your job, disconnect the Nailer from the air supply.
5. **AIR ESCAPING.** The Air Palm Nailer may release air pressure if accidently dropped. Due to this shock, the internal cycling mechanism may assume a mid-cycle position, and like a valve, all air to pass through without energizing the oscillating action. No danger or damage should occur. However, the unit will remain inoperative when this occurs. To stop the escaping air, abruptly slap the cap side of the unit into the palm of your hand with enough impact to reset the internal piston. The escaping air will immediately stop and your unit is ready for use.

REGULAR MAINTENANCE

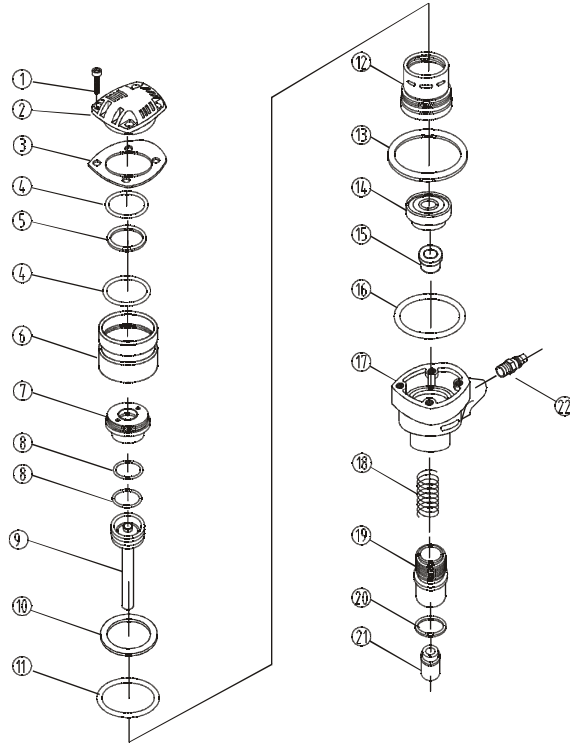
1. Frequent, but not excessive, lubrication is required for best performance. Oil added through the airline connection will lubricate internal parts. An automatic airline oiler is recommended but oil may be added manually before every operation or after about 1 hour of continuous use. Only a few drops of oil at a time are necessary. Too much oil will collect inside the tool and be blown out during the exhaust cycle. **ONLY USE PNEUMATIC TOOL OIL.** Do not use detergent oil or additives, as these lubricants will cause accelerated wear to the seal in the tool.
2. Use a small amount of oil on all moving surface and pivots.
3. Dirt and water in the air supply are major causes of pneumatic tool wear. Use a filter/oiler for better performance and longer life. The filter must have adequate flow capacity for the specific application. Consult the manufacturer's instructions for proper maintenance of your filter.
4. Keep tools clean for better and safer performance. Use nonflammable cleaning solutions (**CAUTION:** Such solutions may damaged O-ring and other tool parts) only if necessary-**DO NOT SOAK.**

TROUBLE SHOOTING

STOP USING THE TOOL IMMEDIATELY IF ANY OF THE FOLLOWING PROBLEMS OCCUR. SERIOUS PERSONAL INJURY COULD OCCUR. ANY REPAIRS OR REPLACEMENTS MUST BE DONE BY A QUALIFIED PERSON OR AN AUTHORIZED SERVICE CENTER ONLY.

PROBLEM	PROBLEM CAUSE	SOLUTION
Air leaking between exhaust cover and body	1. Screw loose. 2. Damaged seal.	1. Tighten screws. 2. Check and replace seal.
Air leaking in area of air plug	1. Air plug loose. 2. Screw of air plug is not match to female screw of body.	1. Tighten air plug. 2. Check and replace air plug.
Air leaking in area of top and /or bottom of body	Worn O-ring in cylinder/body/slide sleeve/piston assembly .	Replace O-ring.
Spring begins slip	1. Worn Seal(20). 2. Worn guider bushing 3. Worn guider bushing retainer.	1. Replace Seal(20). 2. Replace guider bushing. 3. Replace guider bushing retainer.

EXPLODED VIEW DRAWING



PARTS LIST

Refer to the Exploded View Drawing for the location of parts listed below

ITEM	DESCRIPTION	ITEM	DESCRIPTION
1	SCREW	12	CYLINDER
2	EXHAUST COVER	13	WASHER
3	GASKET	14	PIPE
4	O-RING 57.5 \pm 0.6	15	BUSHING
5	WASHER	16	O-RING 63.4 \pm 0.2
6	SLIDE COVER	17	BODY
7	CYLINDRE SLEEVE	18	SPRING
8	O-RING 49.2 \pm 0.5	19	GUIDE BUSHING
9	PISTON ASSEMBLY	20	SEAL
10	SEALRING	21	GUIDE BUSHING RETAINER
11	O-RING 60.25 \pm 0.5	22	AIR PLUG

Limited Manufacturer Warranty

FOT makes every effort to ensure that this product meets high quality and durability standards. FOT warrants to the original retail consumer a 1-year limited warranty from the date the product was purchased at retail and each product is free from defects in materials. Warranty does not apply to defects due directly or indirectly to misuse, abuse, negligence or accidents, repairs or alterations, or a lack of maintenance. FOT shall in no event be liable for death, injuries to persons or property, or for incidental, special or consequential damages arising from the use of our products. To receive service under warranty, the original manufacturer part must be returned for examination by an authorized service center. Shipping and handling charges may apply. If a defect is found, FOT will either repair or replace the product at its discretion.

DO NOT RETURN TO STORE

For Customer Service:

Email: customerservice@focus-ontools.com or Call 1-800-348-5004