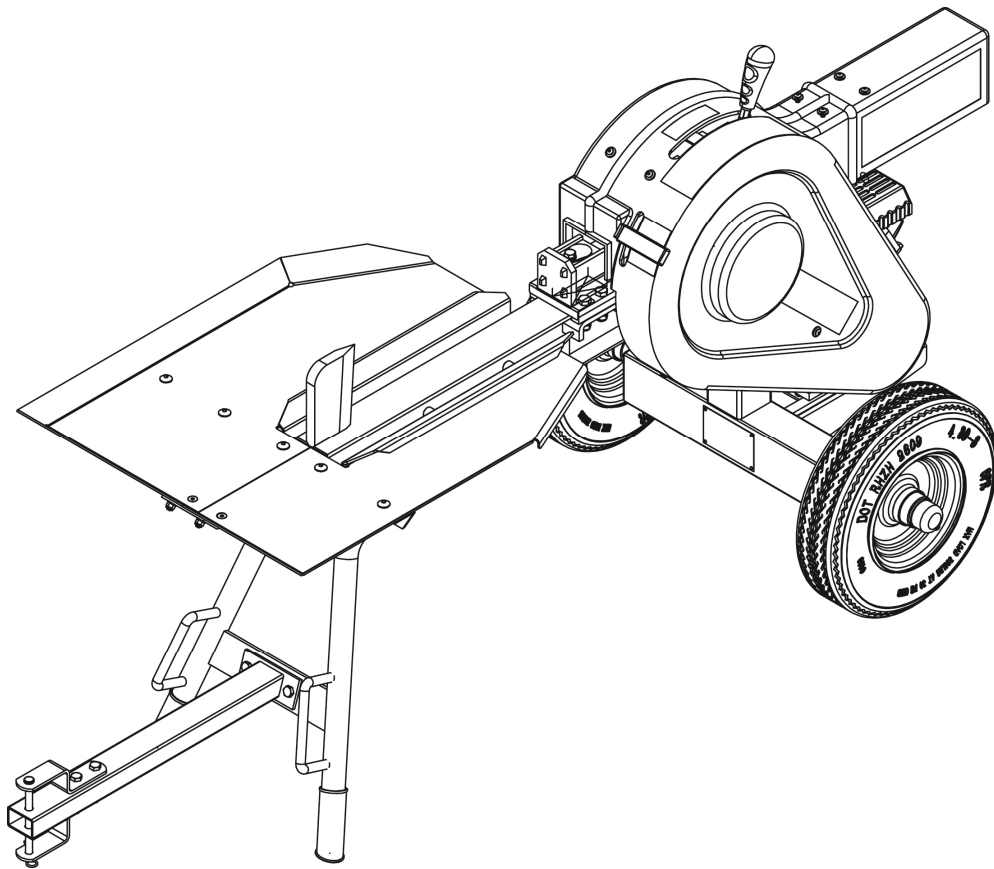


T20 KINETIC LOG SPLITTER

Instruction & Assembly Manual



Patent Pending

Assembly and troubleshooting video at www.ytlininternational.com

SAVE THESE INSTRUCTIONS FOR FUTURE REFERENCE

Table of Contents

| | |
|--|-------|
| General Warnings and Rules..... | 3 |
| Hazard Signal Word Definitions..... | 4 |
| Assembly Instructions..... | 5-11 |
| Kinetic Splitter General Instructions..... | 12 |
| Operation Instructions..... | 12-14 |
| Maintenance and Storage..... | 15 |
| Troubleshooting..... | 16 |
| Specifications..... | 17 |
| Parts Drawing & Parts List..... | 18-22 |
| Limited Warranty..... | 23 |



GENERAL WARNINGS



READ and UNDERSTAND this manual completely before using T20 Log Splitter.

Operator must read and understand all safety and warning information, operating instructions, maintenance and storage instructions before operating this equipment. Failure to properly operate and maintain the log splitter could result in serious injury to the operator or bystanders.

Operation Warnings

- Do not at any time carry passengers, sit or stand on the log splitter.
- Do not allow children to play on, stand upon or climb on the log splitter.
- Always inspect the log splitter before using to assure it is in a good working condition.
- Replace or repair damaged or worn parts immediately.
- Always check and tighten hardware and assembled parts before operation.
- Avoid large holes and ditches when towing the equipment.
- Always operate the log splitter on clear and level ground.
- Do not operate the log splitter at night, only during daylight hours.
- Always tow at reduced speed in rough terrain, along creeks, ditches and on hillsides.
- To avoid personal injury and/or equipment damage **DO NOT EXCEED 10MPH**.
- Keep bystanders, children, and pets at least 25 ft. away.

Crush and Cut Hazards

- Always keep hands and feet clear from moving parts while operating the equipment.
- Always clear and keep work area clean and free of debris when operating.
- Always wear safety gear, eye protection, gloves and work boots when operating the log splitter.



WARNING

The warnings, cautions, and instructions outlined in this instruction manual cannot cover all possible conditions or situations that may occur. It must be understood by the operator that common sense and caution are factors which cannot be built into this product and must be supplied by the operator.








PROP 65 WARNING

The engine exhaust from this product contains chemicals known to the state of California to cause cancer, birth defects, or other reproductive harm.

Assembly Is Required

This product requires assembly before use. See "Assembly" section for instructions. Because of the weight and/or size of the log splitter, it is recommended that another adult be present to assist with the assembly. **INSPECT ALL COMPONENTS** closely upon receipt to make sure no components are missing or damaged.

Hazard Signal Word Definitions

| | |
|---|---|
|  | <p>This is the safety alert symbol. It is used to alert you to potential personal injury hazards. Obey all safety messages that follow this symbol to avoid possible injury or death.</p> |
|  | <p>DANGER indicates an imminently hazardous situation which, if not avoided, will result in death or serious injury.</p> |
|  | <p>WARNING indicates a potentially hazardous situation which, if not avoided, could result in death or serious injury.</p> |
|  | <p>CAUTION indicates a potentially hazardous situation which, if not avoided, may result in minor or moderate injury.</p> |
|  | <p>CAUTION used without the safety alert symbol indicates a potentially hazardous situation which, if not avoided, may result in property damage.</p> |

Technical specifications on the log splitter are provided in the “Specifications” section of this manual.



WARNING

Read and follow all instructions for assembly and operation. Failure to properly assemble this equipment could result in serious injury to the user or bystanders, or cause equipment damage.



Engine Shipped Without Oil.

Before starting engine, fill with SAE 10W-30 motor oil.
See engine manual for engine oil capacity.

Inspect all Log Splitter Components.

If you have damaged components: Contact the freight company that delivered the log splitter and file a claim.

T20 LOG SPLITTER ASSEMBLY

Set the shipping crate on a solid flat surface and carefully remove the lid. Use two people and take all parts out of the shipping crate and inspect the components to ensure there are no missing pieces before starting to assemble the log splitter follow steps 1 through 13.

TOOLS REQUIRED

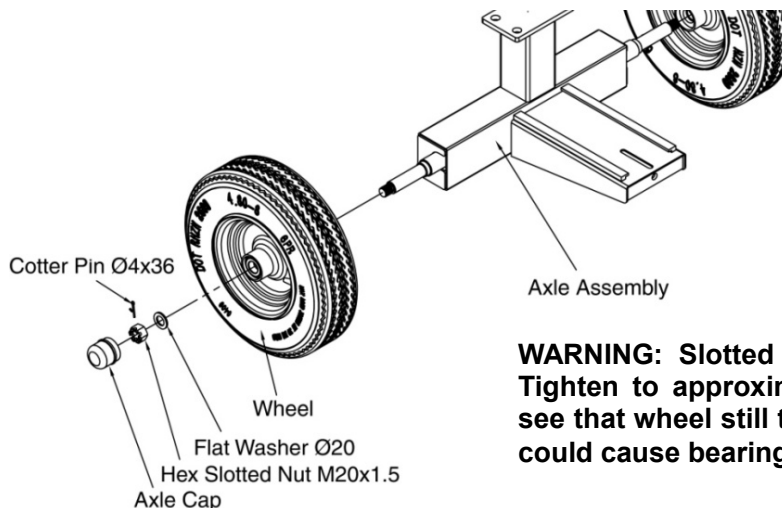
- 13mm, 16mm, 18mm Wrenches
- 4mm, 5mm, 6mm Allen Wrenches
- Adjustable Wrench
- Needle Nose pliers

FLAT WASHERS ALWAYS GO ON NUT SIDE.

Assembly Instructions

STEP 1: Install Wheels on the Axle Assembly

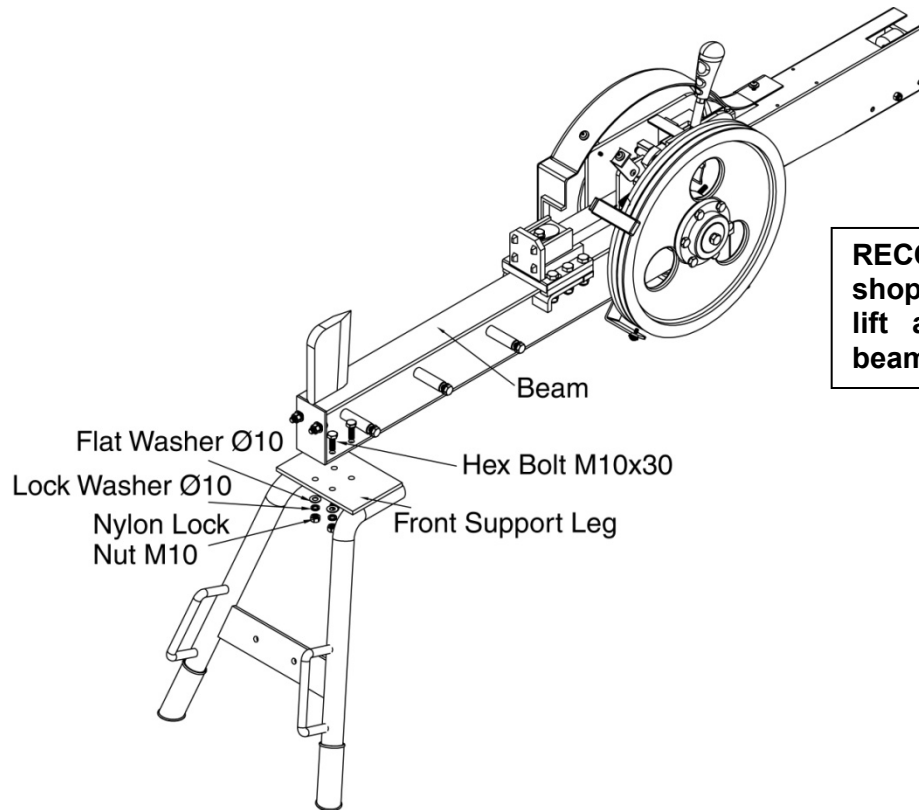
1. Attach the wheels to the axle assembly using flat washer Ø20 (x1) and hex slotted nut M20x1.5(x1), ensuring nipple is outward.
2. After hex slotted nut is tightened, turn back 1/4 cycle to make sure the wheel can rotate smoothly. Lock the hex slotted nut M20x1.5 in place using cotter pin Ø4x36(x1). Install the axle cap on the end using rubber hammer. Repeat on the other wheel.



WARNING: Slotted nut should only be snug. Tighten to approximately 5 ft-lb and check to see that wheel still turns freely. Over tightening could cause bearing to seize when towing.

STEP 2: Attach the Front Support Leg to the Beam

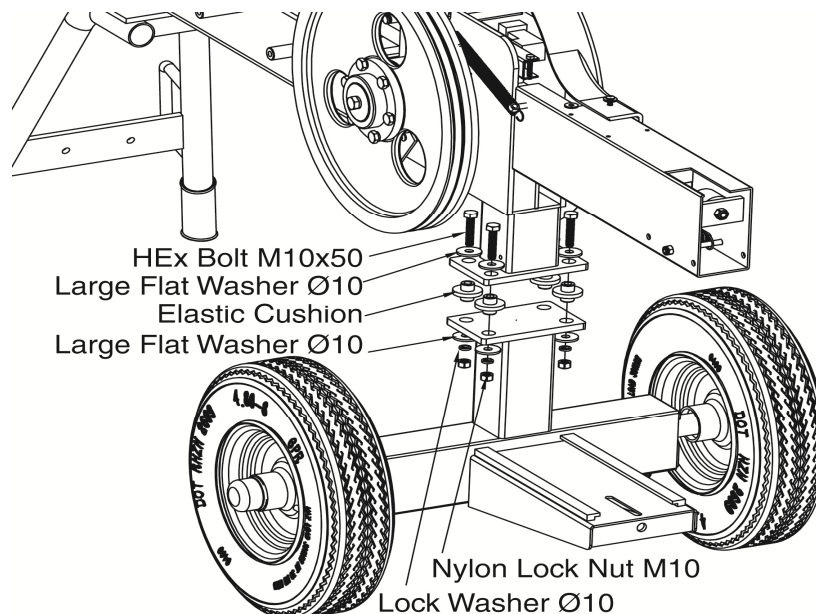
1. Attach the front support leg to the beam using hex bolt M10x30(x4), flat washerØ10(x4), lock washerØ10(x4) and nylon lock nut M10(x4). Tighten all hardware.



STEP 3: Attach Beam to the Axle Assembly

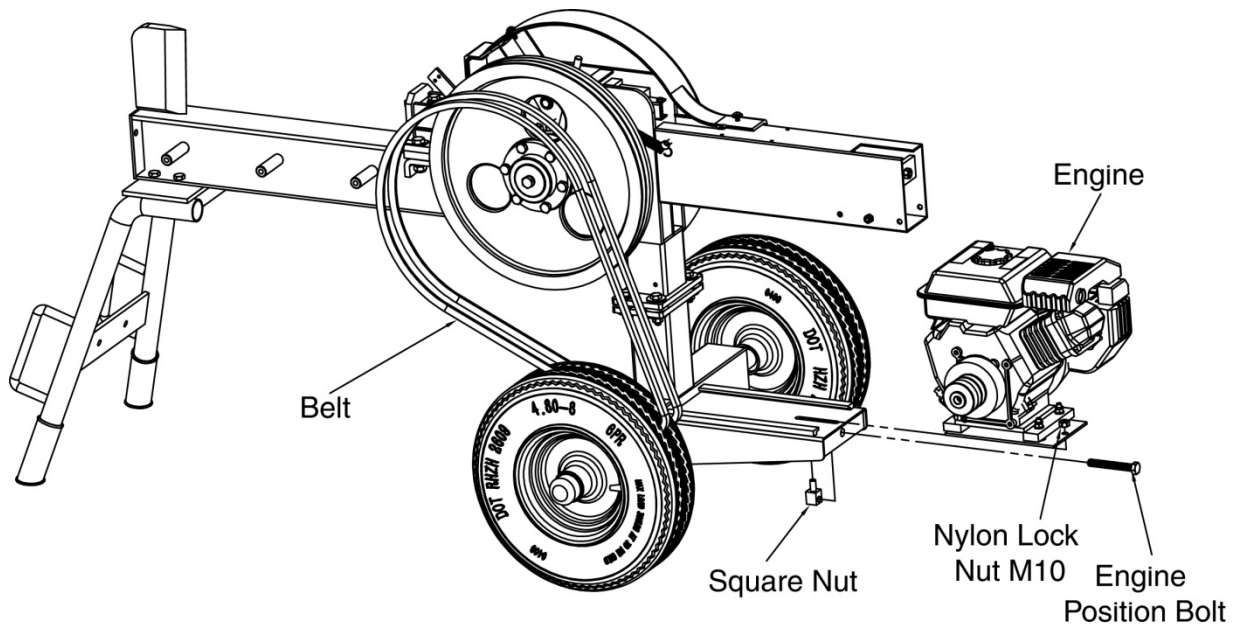
1. Attach the beam assembly to the axle assembly using hex bolt M10x50(x4), large flat washerØ10(x8), elastic cushion(x4),lock washer Ø10(x4) and nylon lock nut M10(x4).

Note: Axle assembly bolts should be tightened 1/2 turn past snug for best performance of vibration dampeners, suggested torque is at the range of 12 to 13 lb. ft. (16-18 N. m.)



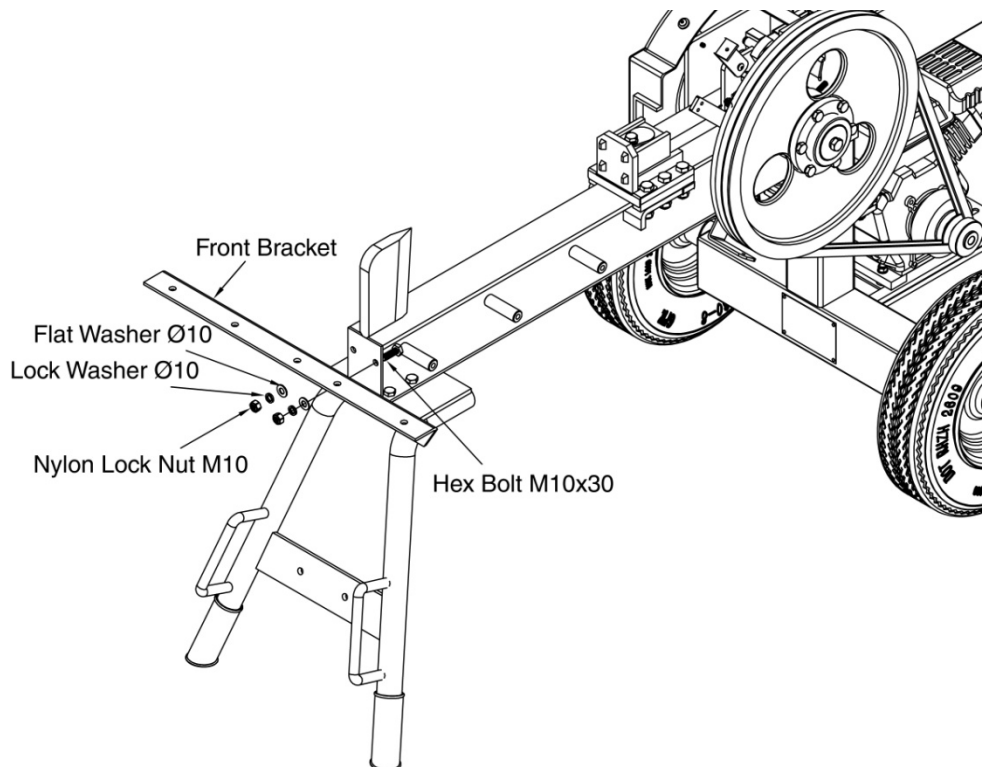
STEP 4: Mount Engine and Connecting Belts

1. Insert the engine assembly into slot, push the engine forward and install square nut(x1) and nylon lock nut M10(x1).
2. Work the belts onto the grooves on engine clutch, ensuring belts stay in corresponding grooves on fly wheels.
3. Put on engine position bolt(x1), adjust the belt tension by pushing down on the belt to ensure the dent is less than 0.4inch. Once the belt tension is correct, lock engine position bolt in place.



STEP 5: Attach Front Bracket to the Beam

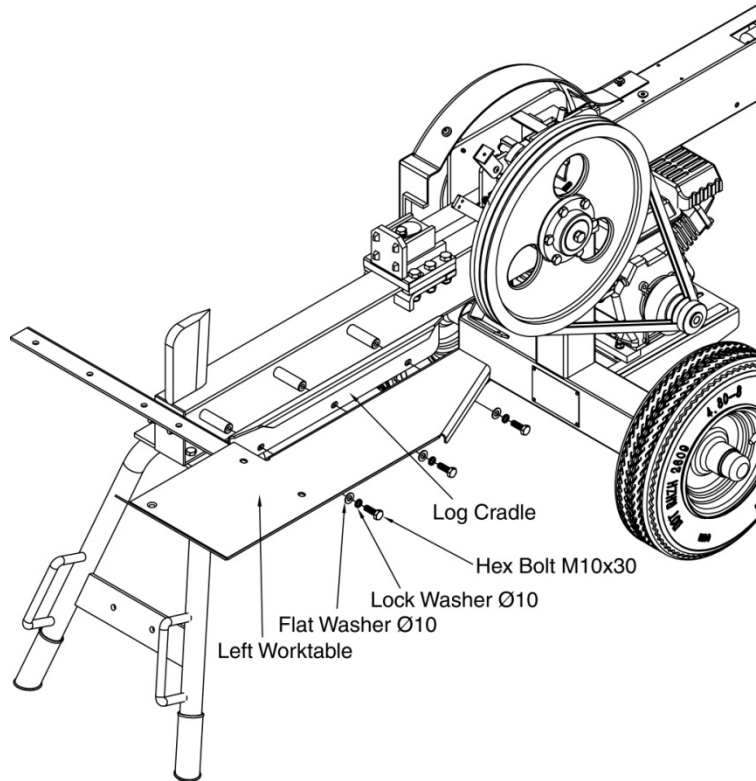
1. Attach the front bracket to front of the beam using hex bolt M10x30(x2), flat washer Ø10(x2), lock washer Ø10(x2) and nylon lock nut M10(x2). Tighten all hardware.



STEP 6: Attach the Left Side of the Worktable

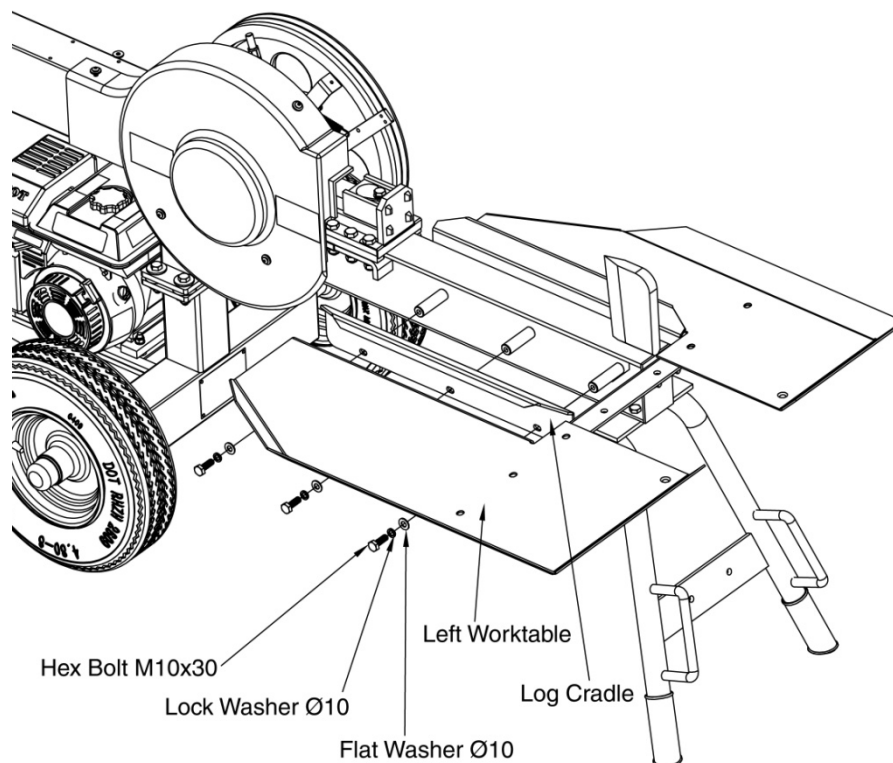
Note: Leave all bolts loose for steps 6, 7 and 8, then tighten all bolts once all parts are installed.

1. Attach log cradle and left side of the worktable to the beam using hex bolt M10x30(x3), flat washer Ø10(x3) and lock washer Ø10(x3), see figure shown below.



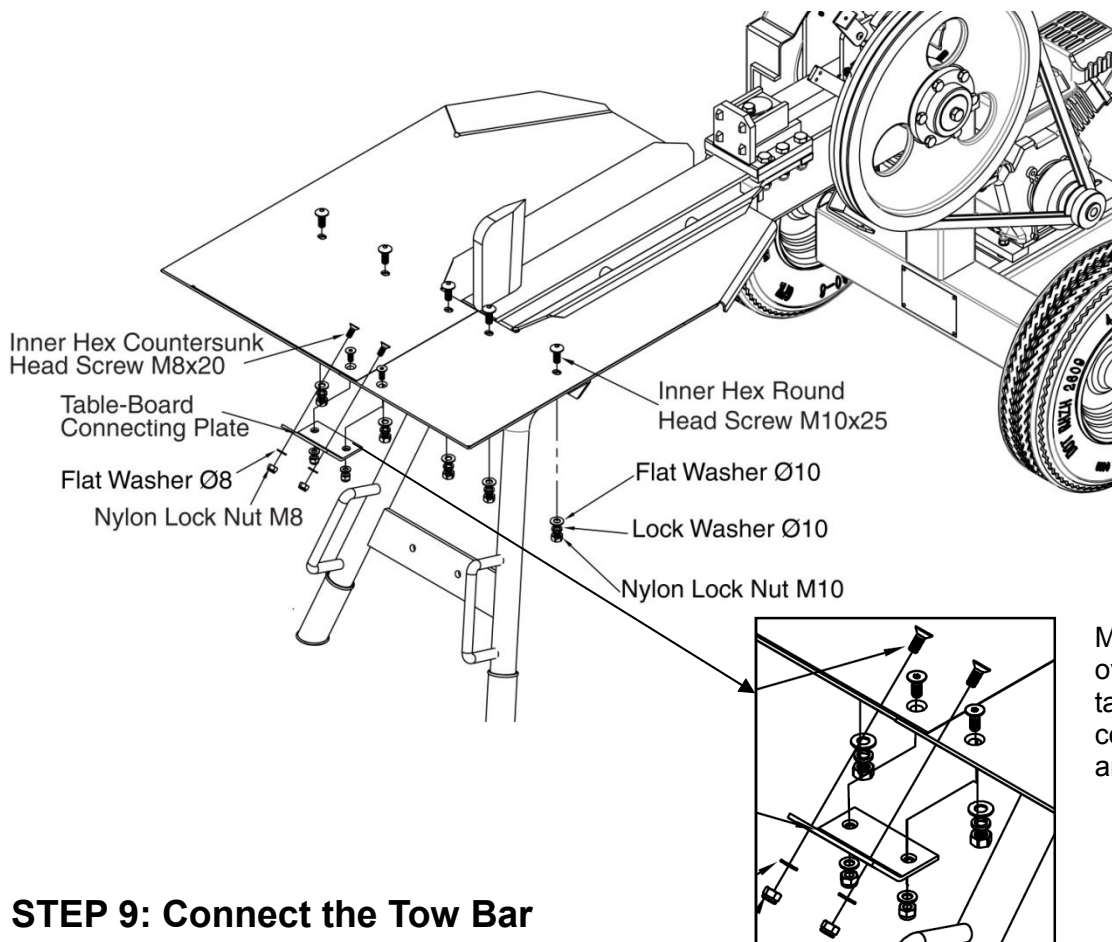
STEP 7: Attach the Right Side of the Worktable

1. Attach log cradle and right side of the worktable to the beam using hex bolt M10x30(x3), flat washer Ø10(x3) and lock washer Ø10(x3), see figure shown below.



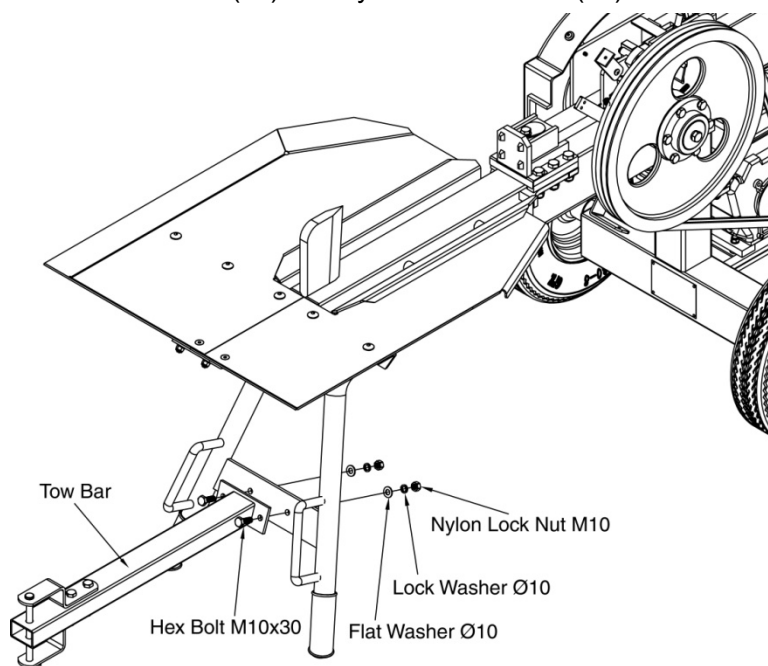
STEP 8: Connect the Right and Left Sides of the Worktable

1. Fix the worktables to the front bracket using inner hex round head screw M10x25(x5), flat washer Ø10(x5), lock washer Ø10(x5) and nylon lock nut M10(x5).
2. Connect the right and left sides of the worktable using the table-board connecting plate(x1), inner hex countersunk head screw M8x20(x4), flat washer Ø8(x4) and nylon lock nut M8(x4), ensuring the oval holes at the table-board connecting plate is upward.
3. **TIGHTEN ALL HARDWARE FROM STEP 6 TO 8.**



STEP 9: Connect the Tow Bar

1. Connect the tow bar to the front support leg using hex bolt M10x30(x2), flat washer Ø10(x2), lock washer Ø10(x2) and nylon lock nut M10(x2).

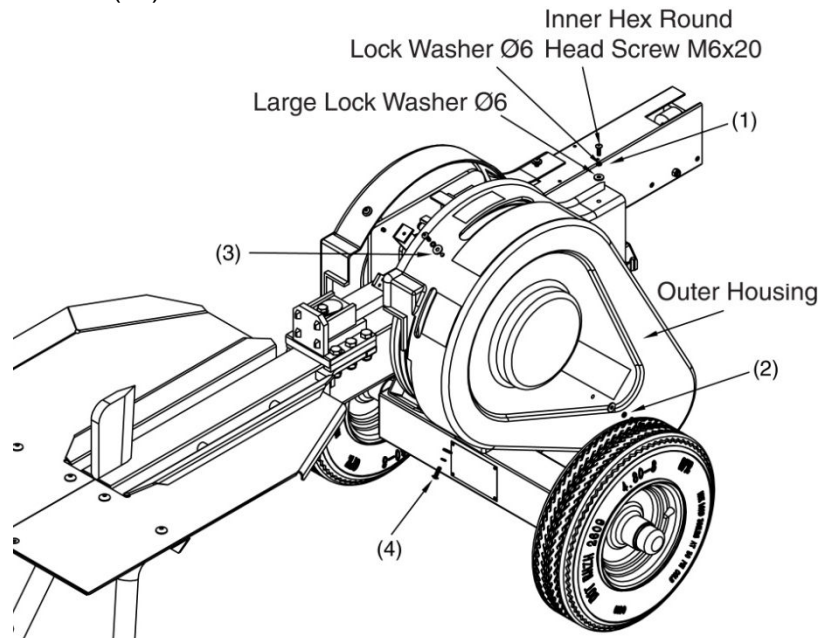


When the splitter is not being towed. Attach the bar under the table for ease of operation.

STEP 10: Attach Outer Housing

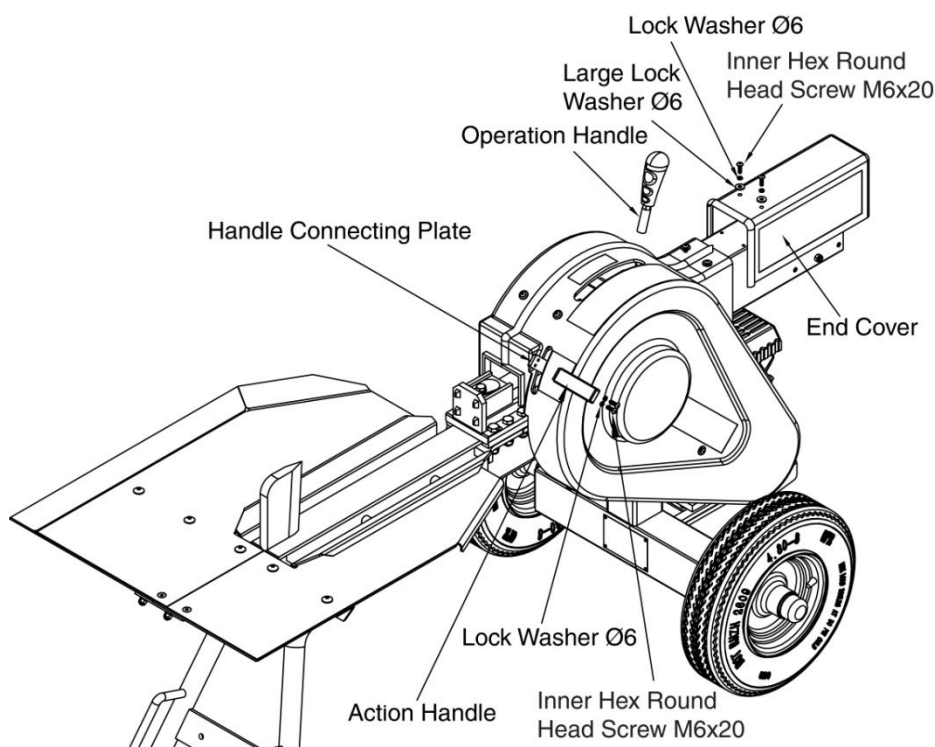
Note: Leave all inner hex round head screws loose until the parts are installed in steps 10 and 11.

1. Attach threaded rod into the holes in the wheel stand and tighten.
2. Attach outer housing using inner hex round head screw M6x20(x4), lock washer Ø6(x4) and large flat washer Ø6(x4).



STEP 11: Attach the End Cover and Handle

1. Attach the end cover to the beam using inner hex round head screw M6x20(x2), lock washer Ø6(x2) and large flat washer Ø6(x2).
2. Attach the action handle to the handle connecting plate, then fixed with inner hex round head screw M6x20(x2), lock washer Ø6(x2).
3. Attach operation handle to the handle assembly and tighten all hardware.



STEP 12: Add Engine Oil

1. Make sure the log splitter is on a level surface.
2. Remove oil fill cap/dipstick to add oil.
3. Refer to the separate owner's engine manual for oil capacity; replace oil fill cap/dipstick.
4. Check engine oil level daily and add as needed.

NOTE: During the break-in period check the engine oil level often.

CAUTION

DO NOT attempt to crank or start the engine before it has been properly filled with the recommended type and amount of oil. Damage to the log splitter as a result of failure to follow these instructions will void your warranty.

STEP 13: Add Gasoline to the Engine

1. Use only clean, fresh, regular unleaded fuel with a minimum 85 octane rating.
2. DO NOT mix oil with fuel.
3. Remove the fuel cap using small funnel to slowly add fuel to the tank. DO NOT overfill and allow approximately ¼ inch of space for fuel expansion.
4. Screw on the fuel cap and wipe away any spilled fuel.



DANGER

Log splitter engine exhaust contains carbon monoxide, a colorless, odorless, poison gas. Breathing carbon monoxide will cause nausea, dizziness, fainting or death. If you start to feel dizzy or weak, get to fresh air immediately.

Operate log splitter outdoors only in a well ventilated area.

DO NOT operate the log splitter inside any building, enclosure or compartment.

DO NOT allow exhaust fumes to enter a confined area through windows, doors, vents or other openings.

DANGER CARBON MONOXIDE, using a log splitter indoors **CAN KILL YOU IN MINUTES.**



CAUTION

Fuel and fuel vapors are highly flammable and extremely explosive.

Fire or explosion can cause severe burns or death.

Unintentional startup can result in entanglement, traumatic amputation or laceration.

Only use regular unleaded gasoline with a minimum 85 octane rating.

DO NOT mix oil and gasoline together.

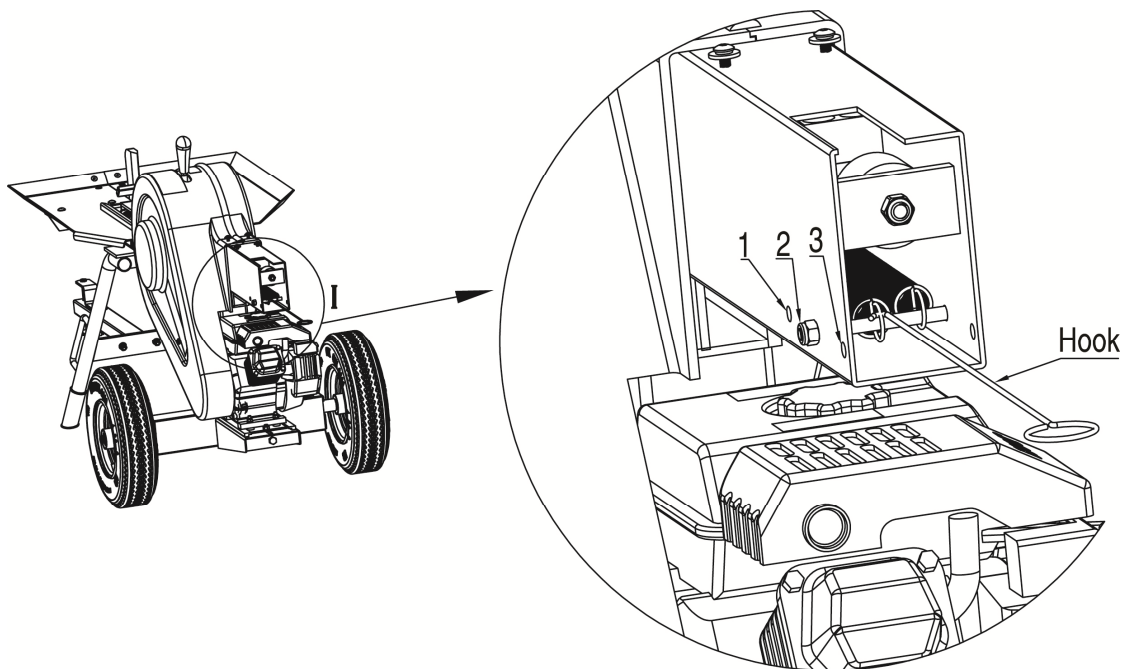
Fill tank approximately ¼" below the top of the tank to allow for fuel expansion.

DO NOT fill fuel tank indoors or when the engine is running or hot.

DO NOT light cigarettes or smoke when filling the fuel tank.

Kinetic Splitter General Information

1. **Break in period** - Break in period for the kinetic splitter is 500 cycles.
2. **Principle of operation** - This unit is designed to outperform the traditional hydraulic 20ton log splitter. Splitting power is derived from 1 spinning fly wheel. When actuation handle is moved to split position, the rotational energy stored in flywheel is converted to splitting force. This unit is fast and powerful. The result is a unit that splits wood up to 4 times faster than a conventional hydraulic unit without the need for hydraulic fluid.
3. **Push plate return speed adjustment.** - Take off the end cover and pull the return spring down, adjust the bolt to the necessary #1 hole is the lowest speed, #2 is quicker and for fastest use the #3 hole.



Operation Instructions



WARNING

Before operating or using the log splitter, review the instructions below and all safety information. Failure to follow these instructions may result in property damage or injury to the operator or bystanders.



WARNING

ALWAYS use the log splitter for its intended use.

ONLY use the log splitter to split wood logs, length wise with the grain.

NEVER modify, alter or change the log splitter in anyway, modifications will void the warranty.

NEVER attach a rope, cable or other device to the handle on the log splitter.

ONLY operate the log splitter in daylight.

NEVER leave the log splitter unattended while the engine is running.

NEVER operate or let anyone else operate, the log splitter while under the influence of alcohol, drugs, or medication.

USING YOUR LOG SPLITTER

1. Start engine using instructions from engine manual.
2. Advance throttle control maximum speed.
3. Grab log by sides and place onto rails against wedge.
4. Push the safety handle down and move the control handle to the SPLIT position to initiate cycle, release handle and the push plate will retract.
5. Push plate automatically retracts at end of stroke. To retract the push plate before end of stroke, return lever to RETRACT position.
6. DO NOT at any time carry passengers, sit or stand on the log splitter.
7. Inspect the engine and make sure the engine oil level is correct.
8. Before towing the log splitter the tires need to be fully inflated.



TIRE WARNING

DO NOT over inflate tires. Serious injury can result if tires explode.
DO NOT tow the log splitter if the tires are worn or will not hold air.
DO NOT exceed the maximum 10MPH towing speed.

9. Refer to the vehicle owner's manual for proper safety and towing instructions.

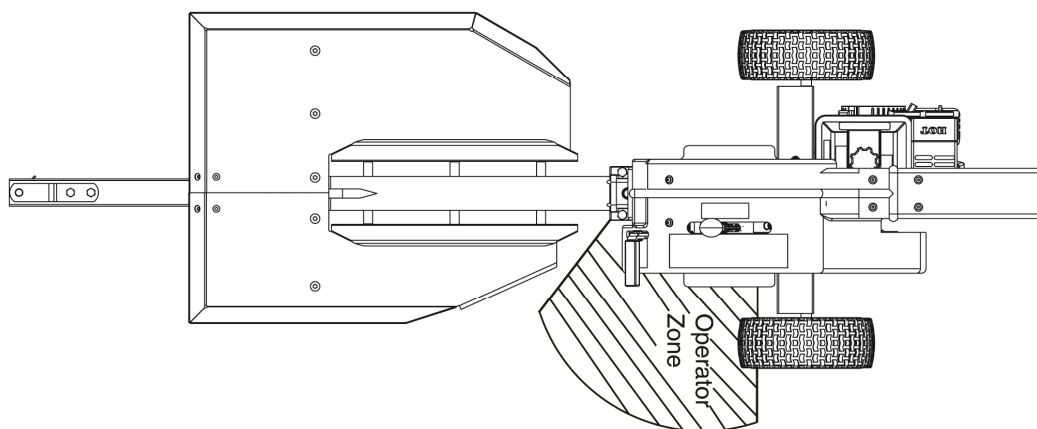


TOWING WARNING

Serious injury or death can occur if towing safety rules are not followed.
Always use safety chains, secure and lock the log splitter to the vehicle hitch before moving.
Drive safely. Be aware of the added length of the log splitter.
Never exceed the maximum travel speed of 10MPH.
Never ride or transport cargo on the log splitter.
Turn off the vehicle before leaving the log splitter unattended.
Block the log splitter wheels to prevent unintended movement.

10. The log splitter needs to be on a dry and level surface with good footing. Do not work on mud, ice, brush or snow. When using the log splitter the work zone must be maintained at all times.

Splitting Zone



NOTE: Only one person operates the kinetic log splitter. Keep everyone else outside the splitting zone when operate the kinetic log splitter.

11. Always wear safety gear, eye protection, gloves and work boots when operating the log splitter.
12. Start the engine and make sure the log splitter is on level ground before operating.
13. Make sure hands are clear from the wedge and crush hazard areas.



CRUSH WARNING

Wedge can cut through skin and break bones. Keep both hands away from wedge and beam slide. Serious accidents can happen when other people are allowed inside the work zone. Keep everyone else out of the work zone while operating control lever.

DONOT wear loose clothing. It can get tangled in moving parts of log splitter.
Only use the log splitter in daylight so you can see what you are doing.

14. Always keep splitting area clean and free of split wood and debris.
15. During the operation, if the wood cannot split in first time and the push plate stuck with wood, please pull back the operation handle (if the engine is in normal running, no matter if the push plate can return or not), just pull back the operation handle and make the second split. If the wood is very big, please keep splitting until the wood separated.

Note: When the push plate stuck with wood and can't return, please DO NOT keep pushing the operation handle, because in that way, the engine will be shut off.



Maintenance and Storage

Regular maintenance is the way to ensure the best performance and long life of your machine. Please refer to this manual and the engine manufacturer's owner's manual for maintenance procedures. Service intervals listed in the checklist below supersede those listed in the engine manufacturer's owner's manual.

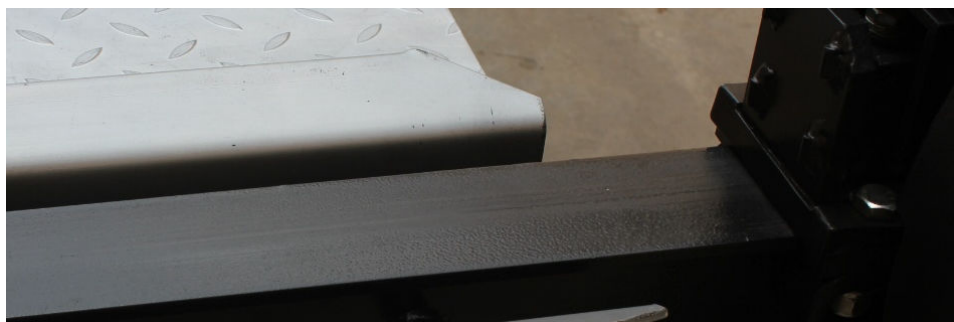


WARNING

Before performing any maintenance procedure or inspection, stop the engine, wait five (5) minutes to allow all parts to cool.

MAINTENANCE

- Make sure engine is off before performing maintenance.
- After performing any maintenance, make sure all guards, shields and safety features are put back in place before operating the log splitter.
- Before operating make sure the tires have the **RECOMMENDED TIRE PRESSURE**.
- Regularly grease axle and wheel bearing area or when needed.
- After the wheel bearings have been greased make sure the axle nuts and pins are in place and secure.
- Periodically check all fasteners, housing, chain and belts for tightness and wear.
- Annually clean and lightly lubricate all moving parts or when needed.
- Use a glossy enamel spray paint to touch up scratched or worn painted metal surfaces.
- **Clean the debris from the beam if the push plate cannot return completely, lightly lubricate the beam using hydraulic oil. Move the push plate back and forth until it returns correctly.**



| What | When | How |
|----------------|---------------|--|
| Nuts and Bolts | Each Use | Check for loose bolts, tighten before operating. |
| Beam | Every 4 cords | Apply small amount of oil to beam surface. |
| Moving Parts | Each Use | Clear debris from log splitter. |

Refer to the Engine Owner's Manual for engine maintenance.

IMPORTANT:

If a part needs replacement, only use parts that meet the manufacturer's specifications. Replacement parts that do not meet specifications may result in a safety hazard or poor operations.

STORAGE

- If storing for extended period of time (> 1 month), add fuel stabilizer or drain fuel.
- Before storing make sure the log splitter is clean and dry for years of trouble free service.
- Lightly lubricate all log splitter surfaces and moving parts to prevent rust.
- Store indoors or protected area during severe weather and winter months.

Troubleshooting

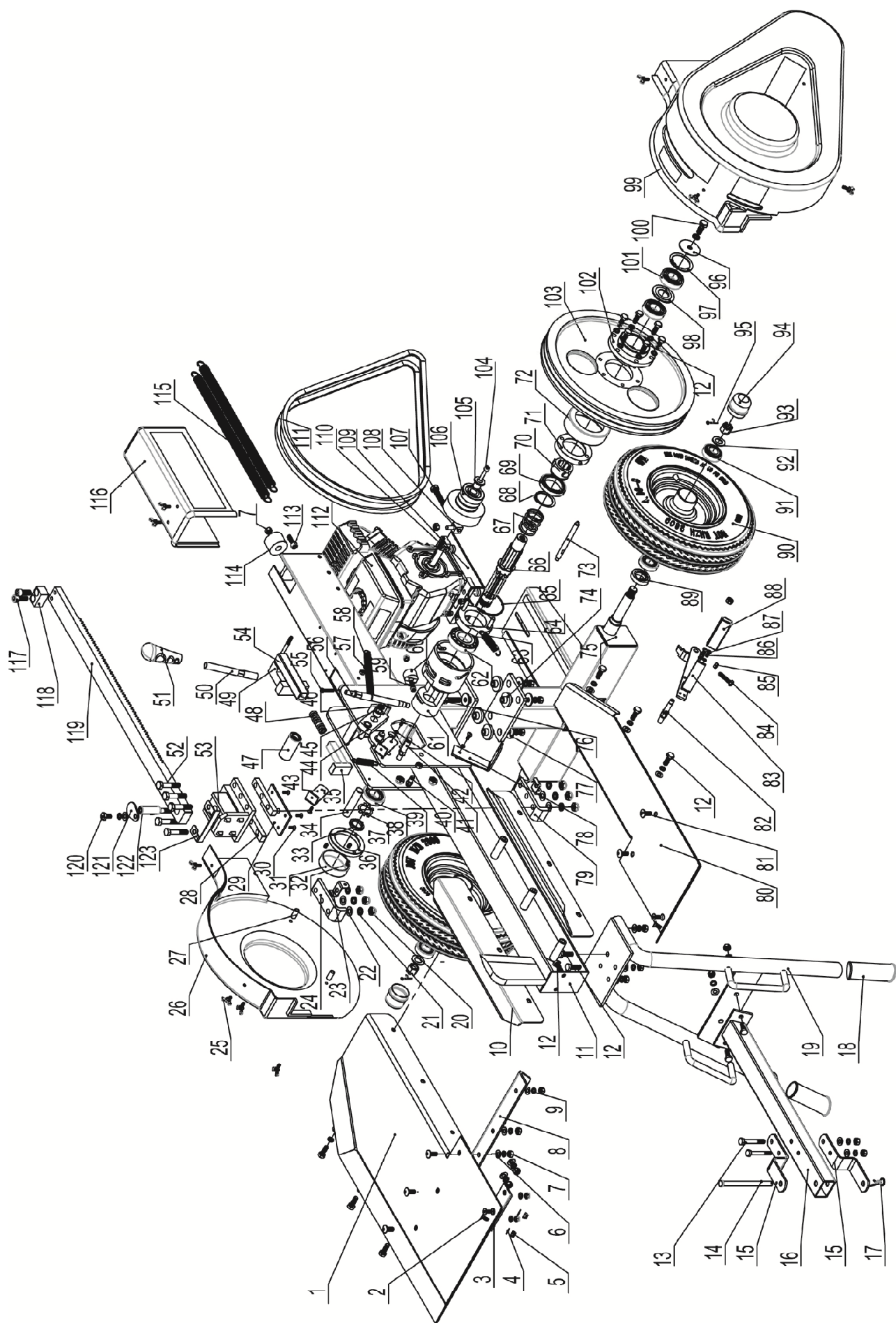
| No. | Problem | Cause | Solution |
|-----|--|--|---|
| 1 | Engine will not start | 1. Check gas level 2. Check oil level 3. Check fuel ON/OFF 4. Check ON/OFF switch | 1. Add gasoline 2. Add oil 3. Reference engine manual |
| 2 | Push plate cannot retract or retracts slowly | 1. Wood Chips or Debris under push plate 2. Retract spring too loose. | 1. Remove debris from the push plate 2. Lubricate oil on the beam. 3. Adjust or replace retract spring. |
| 3 | Push plate retract too fast | Retract spring too tight. | Adjust or replace retract spring. |
| 4 | No force or little force during splitting | 1. #57 Round Nut M40x1.5 is loose 2. Clutch spring deformed | 1. Enlarge the clearance and tight the #57 Round Nut M40x1.5. 2. Replace the clutch spring |
| 5 | Noise from engagement clutch | 1. Clutch clearance is too small 2. Clutch is not completely disengaged | Adjust the clutch clearance or replace clutch spring (See the website for instruction) |

Specifications

| | |
|-------------------------|----------------------|
| Cycle Time | 4 Sec |
| Wedge | 6.3" Hardened Steel |
| Max. Log Length | 20.3" |
| Wheel Size..... | 16" / 4.80-8 |
| Working Height..... | 25.6" |
| Hitch Type | Pin Type |
| Work Table Length | 33" |
| Max. Towing Speed..... | 10MPH |
| Overall Size..... | 90.45"x32.28"x41.73" |

NOTE: For Engine Details Refer to the Engine Owner's Manual.

Parts Drawing & Parts List



Parts Drawing & Parts List

| Ref# | Drawing No. | Description | Qty |
|------|------------------|--|-----|
| 1 | LSF2000-00001 | Right Worktable | 1 |
| 2 | 911608020 | Inner Hex Countersunk Head Screw M8X20 | 4 |
| 3 | LSF3000-00001 | Table-Board Connecting Plate | 1 |
| 4 | 9301-08000-DX | Flat Washer Ø8 | 8 |
| 5 | 9206-08000 | Nylon Lock Nut M8 | 10 |
| 6 | 9301-10000-DX | Flat Washer Ø10 | 22 |
| 7 | 9206-01000 | Nylon Lock Nut M10 | 24 |
| 8 | LSF2000-00002 | Front Bracket | 1 |
| 9 | 9306-10000DX | Lock Washer Ø10 | 32 |
| 10 | LSF2000-00003 | Log Cradle | 2 |
| 11 | LSF2000-01000 | Beam | 1 |
| 12 | 9101-10030-8.8DX | Hex Bolt M10x30 | 20 |
| 13 | 9101-10070-8.8DX | Hex BoltM10x70 | 2 |
| 14 | LSF2000-00004 | Hitch Pin | 1 |
| 15 | N100-00014 | Connecting Plate | 2 |
| 16 | LSF2000-02000 | Tow Bar | 1 |
| 17 | 9405-03075DX | R Pin Ø3x75 | 1 |
| 18 | LSF2000-00006 | End Cover | 2 |
| 19 | LSF2000-03000 | Front Support Leg | 1 |
| 20 | 9206-12000 | Nylon Lock Nut M12 | 8 |
| 21 | 9306-12000DX | Lock Washer Ø12 | 7 |
| 22 | 9301-12000-DX | Flat Washer Ø12 | 4 |
| 23 | LSF2000-00007 | Pulling Plate | 2 |
| 24 | LSF2000-00008 | Left Press Plate | 1 |
| 25 | 9101-06016 | Bolt M6x16 | 9 |
| 26 | 9306-06000DX | Lock Washer Ø6 | 15 |
| 27 | LSF2000-00010 | Connecting Pipe | 2 |
| 28 | LSF2000-00011 | Guide Plate Right | 2 |
| 29 | LSF2000-00012 | Nylon Plate | 1 |
| 30 | 9107-06014 | Cross Countersunk Head Screw M6x14 | 4 |
| 31 | LSF2000-00014 | Plastic Cap | 1 |
| 32 | 9121-08012 | Hex Screw M8x12 | 3 |
| 33 | 9215-03015-FH | Round Nut M30x1.5 | 1 |
| 34 | LSF2000-00015 | Axle of Pressure Roller | 1 |
| 35 | LSF2000-04000 | Collision Block | 1 |

Parts Drawing & Parts List

| Ref# | Drawing No. | Description | Qty |
|------|------------------|----------------------------------|-----|
| 36 | LSF2000-00005 | Round Nut M74 | 1 |
| 37 | 9319-30000-FH | Tab Washer Ø30 | 1 |
| 38 | 9604-30206 | Tapered Roller Bearing 30206 | 1 |
| 39 | LSF3000-00020 | Spring | 1 |
| 40 | LSF2000-00046 | Screw | 1 |
| 41 | LSF2000-00043 | Bolt | 1 |
| 42 | 9306-06000DX | Lock Washer Ø6 | 5 |
| 43 | LSF2000-00016 | Connecting Plate 1 | 2 |
| 44 | LSF3000-08000 | Welding Block | 1 |
| 45 | LSF3000-00018 | Teleflex | 1 |
| 46 | 9304-00014 | Circlip for Shaft Ø14 | 1 |
| 47 | LSF2000-00017FH | Pressure Roller | 1 |
| 48 | LSF2000-00018 | Spring | 1 |
| 49 | LSF2000-06000 | Small Square Tube | 1 |
| 50 | LSF2000-00048 | Control Handle Assembly | 1 |
| 51 | LSF3000-00028 | Operation Handle | 1 |
| 52 | 9101-12060-8.8DX | Hex Bolt M12x60 | 6 |
| 53 | LSF2000-05000 | Push Plate Assembly | 1 |
| 54 | 9101-08090-8.8DX | Hex Bolt M8x90 | 1 |
| 55 | 9101-06035 | Hex Bolt M6x35 | 1 |
| 56 | LSF3000-00011 | Tempering Handle | 1 |
| 57 | 9119-08030-FH | Eyelet Bolt M8x30 | 1 |
| 58 | LSF3000-00019 | Handle Spring | 1 |
| 59 | 9105-08025 | Inner hex round head screw M8x25 | 1 |
| 60 | LSF3000-00035 | Crash Pad | 1 |
| 61 | LSF2000-10000 | Clutch Base | 1 |
| 62 | 9604-30208 | Tapered Roller Bearing30208 | 1 |
| 63 | LSF3000-00013 | Safety Handle Tension Spring | 1 |
| 64 | LSF2000-07000 | Rotating Disk | 1 |
| 65 | LSF2000-00021 | Steel Cable Baffle Ring Ø101x2.8 | 1 |
| 66 | LSF2000-00022 | Gear Shaft | 1 |
| 67 | LSF2000-00023 | Clutch Spring | 1 |
| 68 | 9304-05000 | Circlip for Shaft Ø50 | 1 |
| 69 | 9602-61910 | Bearing 61910 | 1 |
| 70 | LSF2000-00025 | Clutch Tooth Outside | 1 |

Parts Drawing & Parts List

| Ref# | Drawing No. | Description | Qty |
|------|-------------------|-----------------------------------|-----|
| 71 | LSF2000-08000 | Sliding Block | 1 |
| 72 | LSF2000-00049 | Adjustable Washer | 1 |
| 73 | LSF2000-00024FH | Connecting Rod | 1 |
| 74 | LSF2000-00031 | Elastic Cushion | 4 |
| 75 | LSF2000-12000 | Wheel Stand | 1 |
| 76 | 9101-10050-DX | Hex Bolt M10x50 | 4 |
| 77 | 9302-10000-DX | Large Lock Washer Ø10 (28x11x3) | 8 |
| 78 | LSF2000-00020 | Action Handle | 1 |
| 79 | LSF2000-00019 | Right Press Plate | 1 |
| 80 | LSF2000-00032 | Left Worktable | 1 |
| 81 | 9104-10025-8.8DX | Inner hex round head screw M10x25 | 5 |
| 82 | LSF3000-00027 | Bolt | 1 |
| 83 | LSF2000-00041 | Handle Connecting Plate | 1 |
| 84 | 9114-08040-8.8DX | Hex Bolt M8x40 | 1 |
| 85 | 9201-08000 | Hex Nut M8 | 2 |
| 86 | LSF2000-09000 | Safety Handle Assembly | 1 |
| 87 | 9104-06016-10.9DX | Inner hex round head screw M6x16 | 5 |
| 88 | N560-00019 | Safety Handle | 1 |
| 89 | LSP25-14002 | Oil Seal | 2 |
| 90 | LSP25-14001 | Wheel | 2 |
| 91 | L44643 | Tapered Roller Bearing | 4 |
| 92 | 9301-2000-DX | Flat Washer Ø20 | 2 |
| 93 | LSP25--00020 | Hex Slotted Nut M20x1.5 | 2 |
| 94 | LSP25-00009-DX | Axle Cap | 2 |
| 95 | 9404-04036DX | Cotter Pin 4x36 | 2 |
| 96 | LSF2000-00029FH | Large Baffle Ring | 1 |
| 97 | 9308-06200 | Circlip for Hole Ø62 | 1 |
| 98 | LSF2000-00030 | Spacer | 1 |
| 99 | LSF2000-00028 | Left Out Housing | 1 |
| 100 | 9101-12030-8.8DX | Hex Bolt M12x30 | 1 |
| 101 | 9603-80206 | Bearing 80206 | 2 |
| 102 | LSF2000-00027 | Inner Gear of Clutch | 1 |
| 103 | LSF2000-00026 | Flywheel | 1 |
| 104 | 9105-5/16-24-1 | Inner Hex Bolt 5/16-24-1 | 1 |
| 105 | LSF2000-00045 | Engine Clutch Sleeve | 1 |

Parts Drawing & Parts List

| Ref# | Drawing No. | Description | Qty |
|------|-------------------|-----------------------|-----|
| 106 | LSF2000-00033 | Clutch 60-2A | 1 |
| 107 | 9101-1290-8.8DX | Engine Position Bolt | 1 |
| 108 | LSF3000-00029 | Square Nut | 1 |
| 109 | LSF3000-09000 | Engine Base | 1 |
| 110 | 8801-4.78*4.78*50 | Flat Key 4.78x4.78x50 | 1 |
| 111 | 9701-A1727 | A-1727 Belt | 2 |
| 112 | | Engine | 1 |
| 113 | 9112-10030-8.8FH | Inner Hex ScrewM10x30 | 1 |
| 114 | LSF2000-00035 | Elastic Bar | 1 |
| 115 | LSF2000-00034 | Reset Tension Spring | 2 |
| 116 | LSF2000-00036 | End Cover | 1 |
| 117 | 9105-12030-8.8FH | Inner Hex ScrewM12x30 | 2 |
| 118 | LSF2000-00037 | Collision Block | 1 |
| 119 | LSF2000-00038 | Rack | 1 |
| 120 | 9101-10020-8.8DX | Hex Bolt M10x20 | 1 |
| 121 | LSF3000-05006 | Pressing Plate | 1 |
| 122 | LSF2000-00039 | Pushing Plate Pin | 1 |
| 123 | LSF2000-00040 | Cover Plate | 1 |

Limited Warranty

Warranty

For 2 years from the date of purchase YTL International will replace or repair defects in material and workmanship for the original purchaser of the log splitter for Residential use only, **AND 90 days for Commercial use**. For 2 years the engine residential warranty is covered per the engine manufactures warranty. For 1 year from date of purchase YTL International will repair or replace internal system components. The warranty will not apply to any unit which was not assembled correctly, misused, overloaded or which has been used or operated contrary to our instructions, or which has been repaired or altered by anyone other than a service representative authorized by YTL International Inc.

Warranty Exclusions

This warranty does not cover cosmetic defects such as paint, decals or wear items such as tires. This warranty will not cover failures or problems due to acts of God, or events or forces beyond the control of the manufacturer.

Normal Wear Exclusion

The log splitter needs periodic service to perform well. This warranty does not cover repair when normal use has exhausted the life of a part or the equipment as a whole.

Installation, Use and Maintenance Exclusion

This warranty will not apply to parts and/or labor if the log splitter has been misused, neglected, involved in an accident, abused, loaded beyond its limits, modified or assembled incorrectly. Normal maintenance is not covered under this warranty.

Limits of Implied Warranty and Consequential Damage Exclusion

YTL International disclaims any obligation to cover any loss of time, use of this product, freight, or any incidental or consequential claim by anyone from using this log splitter. THIS WARRANTY IS IN LIEU OF ALL OTHER WARRANTIES, EXPRESS OR IMPLIED, INCLUDING WARRANTIES OF MERCHANTABILITY OR FITNESS FOR A PARTICULAR.

An exchange unit will be subject to the original warranty. The length of the warranty governing the exchanged unit will have the date as the purchase date of the original unit. This warranty gives you certain legal rights which may change from state to state. Your state may also have other rights you may be entitled to that are not listed within this warranty.

Contact Information

YTL International Inc.
17517 Fabrica Way Suite J
Cerritos, CA 90703
Phone: (888) 723-6534
Phone: (562) 404-8016
Fax: (562) 404-8013
Email: parts@ytlinternational.com
Website: www.ytlinternational.com

Warranty & Customer Support Questions

Phone: (888) 723-6534