

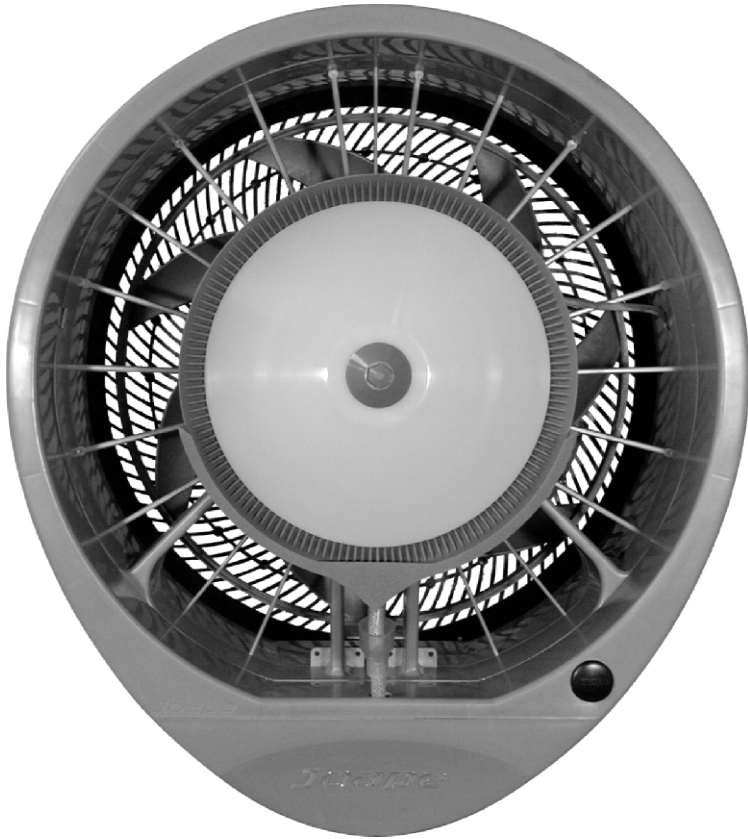
EcoJet

Misting Fans



User's Manual

COMMERCIAL/INDUSTRIAL



High Quality Product
Joape

USER'S MANUAL

Congratulations on your purchase of an Ecojet Cooling System!

Your new misting fan will be a great addition to your home, business or work environment, and will keep you comfortable throughout the year. Under the proper conditions your Ecojet Cooling System fan will provide a cooling "cloud" of 800-3000 square feet.

Ecojet offers a variety of "Brazilian Cool" misting fans in Residential, Commercial and Industrial product lines in a range of colors and sizes.

Sold in over 40 countries, Ecojet is a Brazilian based company with over 15 years experience in the acclimatizing equipment industry. Their focus is on the development of new technologies and products offering high quality solutions, while respecting and preserving the environment.

For your personal safety and to maximize the performance of your Ecojet Cooling Solution Fan, please read this User's Manual carefully before using your equipment. If you have any questions, please contact SouthBee Customer Assistance at (305) 713-4424 or by emailing admin@southbee.com with your contact information.

PLEASE READ & SAVE THIS USER'S MANUAL WITH INSTRUCTIONS.

"Green" Footnote: All of the packaging material is recyclable, please recycle.

Southbee, Corp – Exclusive Distributor Joape

Corporate Office: 600 S Federal Hwy

Suite 211, Deerfield Beach, FL 33441

Phone: +1 305-713-4424

Email: admin@southbee.com

IMPORTANT SAFETY INSTRUCTIONS



WARNING

To avoid risks, please observe the precautions mentioned below:

- Read all the instructions and the warranty terms before using your Ecojet Cooling System.
- Children should not be allowed to operate Ecojet Cooling System.
- Do not leave children unattended within reach while the equipment is in use.
- Avoid any contact with moving parts, do not place objects on or in the fan.
- To avoid electrical shock, never connect or disconnect the plug with wet hands.
- Also to protect against electrical shock, do not immerse unit, plug or cord in water or spray with liquids.
- Never yank on the power cord to unplug the fan from the electrical outlet, to disconnect grip the plug and pull from the outlet.
- Always unplug fan when not in use, moving to a new location or for cleaning.
- Never add flammable liquids to the water reservoir.
- Do not place fan near an open flame, cooking or heating appliance.
- Evaporative systems demand the exchange of air, either operate the equipment with the AC is turned on or where there is air circulating.
- This fan has a polarized plug (one blade wider than the other), which is intended to fit into a polarized electrical outlet only one way.
- To prevent damage to the water pump do not operate fan without water.
- Floors around the fan can become damp and slick, use caution to prevent injury due to slipping

Ecojet Cooling System Benefits

- Reduces the temperature with its evaporative system
- Cleanses the air of dust particles
- Hydrates the air with atomized water
- Eliminates static electricity
- Dilutes concentration of organic solvents and ammonia
- Helps eliminating gases and odors
- Electricity savings due to its low electricity consumption
- Improves performance of air-conditioning units
- Can be used as a sprayer for water based solutions

Technical Specifications – Comparative Table

Model	Air Flow	Noise Level	Power Rating	Voltage	Water Supply	Dimensions (WxHxD)	Weight
Cassino/Cyclone	1625cfm	66dB	230W/2.10Amp	110V*	Water Line	23" x 13" x 29" 34"x33"x7.08'	36lbs 85lbs
Copacabana/Hurricane	5885cfm	66dB	200W/1.82Amp		Reservoir	29" x 16" x 34" 34"x33"x7.5'	45lbs 94lbs
Fortaleza/Tornado	10595cfm	74dB	460W/4.19Amp		Water Line	29" x 16" x 34"	52lbs

* Singlephase

Important Warnings

- Make sure you install the device out of reach of children.
- The centrifugal disk spins at 3,500 RPM; do not place your hand or any other object on it while it is working.
- Do not use equipment with damaged parts; always use original ex-factory parts.
- Adjust the mist according to the conditions of your environment.
- Users will be deemed responsible if they add flavoring agents, as well as any other chemical, to the water.
- In case any gas generator is added, the device's manufacturer will be deemed responsible.
- Do not start the cooling system with no water in the tank.
- Protect from rain and weather when using outdoors.



WARNING

If the electrical cord for power supply gets damaged, it can **ONLY** be replaced by the manufacturer or authorized agent.

For maintenance, contact customer service at: admin@southbee.com or www.ecojet.us



IMPORTANT WARNINGS

- The centrifugal disk spins at 3,500 RPM, do not place your hand or any other object on it when the fan is operating.
- Be careful not to spill water on the electrical part of equipment.
- NEVER turn you equipment ON without water in the reservoir.
- Do not add untreated water to the water reservoir.
- Do not clean Ecojet Cooling System with harsh chemicals or abrasive products.
- ALWAYS remove the water from the reservoir to store your Ecojet Cooling System.
- Cleaning is essential for a proper performance of the equipment.

Installation Steps

When you acquire the Ecojet Misting Fan, you have the option to choose it to instal to a support or on a pedestal reservoir. Those are 2 different equipments, prepared for each requirements.

- Put the equipment on a column support – an angle bracket type shelf – or hang it to the ceiling with steel cables or chains.
- Maximum height: 9ft; maximum tilt of 10 degrees in relation to the ground; be careful with water drops (the higher the tilting degree the higher the probability of water drops).
- Distance from the wall: 1ft or use a wall support.
- For places with a building footprint lower than 9ft high, put the cooling system 1ft7in from the ceiling.
- For places with a building footprint higher than 9ft high, put the cooling system 8ft to 9ft from the ground.

- Use 3/4" water connection
- We suggest wiring be installed by a professional electrician.
- Use 2mm wires for wiring.
- Install a 10 amp circuit breaker for safety.
- You must place a valve on the water supply system in the rear of each device.

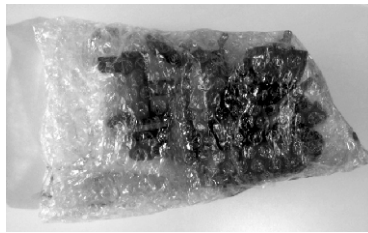
Step by step - How to assemble the units with water reservoir

All reservoir units are shipped in 3 volumes:

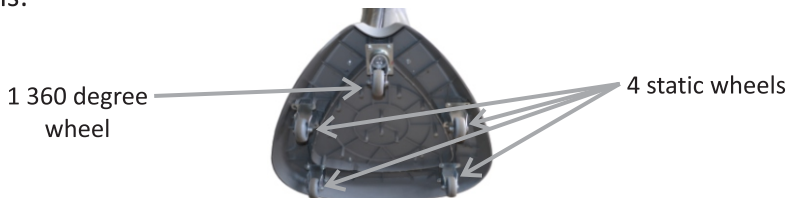
- 1 equipment box
- 1 water reservoir box/volume with 1 bag with 4 pan head Phillips screws #10x1-1/4in
- 1 base for water reservoir box/volume

Step 1: Unbox the water base, which is the smallest box, the thinner. Inside the box, there is a base made of plastic and with bolts attached to it. There are 20 bolts. Remove all the bolts using a driver.

Step 2: You will find together with the base, all the 5 wheels in cast metal, packed with a bubble wrap for protection. Together there is a bag with pieces for attaching the base to the water reservoir.



Step 3: Unpack all the wheels. Remove each set of 4 bolts and install the wheel using the same bolts. Tighten the bolts to the base. You have 4 static wheels and 1 wheel that moves in all directions (and has a brake when you put the lever down, breaking the complete equipment from moving). The installation must be like this:



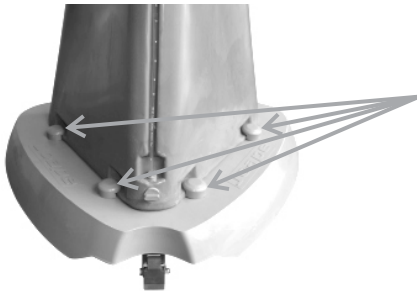
Step 4: Unbox the water reservoir and place it over the water tank. Centralize it according to the holes. You will need the pieces from the plastic bag:

4 pieces
(attachments)
that must be
used on both
sides of the tank

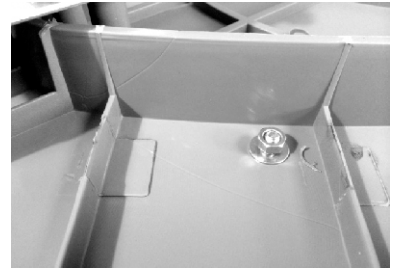


2 pieces
(stoppers)
that must be
used in the
front of the tank

Step 5: Remove the nut and the washer from the attachment or the stopper and insert the bolt inside the hole, and place the washer and the nut from the bottom of the tank, tighten it up and holding the tank on the entrances of the reservoir, as photo below:



4 Attachments
must hold
the water tank
to the base



View from the bottom, washer and nut holding the bolt of the attachment and stopper

Step 6: Unpack the machine and remove all bubble packing and materials like packing foam and straighten the water pump hose. Place the water pump and all its hose inside the water tank. Raise the equipment and place it over the water tank. Be careful to also place the return hose (shorter one) also inside the water tank. Centralize the machine to the tank and use the 4 4 pan head Phillips screws #10x1-1/4in below to attach the equipment to the water reservoir:



Use these 4 screws for installation of the fan over the water tank. 2 are for the front and 2 are for the back



Step 6: Certify that the drain plug at the back of the water tank, bottom of the water level is tighten and will hold the water inside of it.

Step 7: Fill the tank up with water through the 2 holes on the sides of the water tank (you can remove the rubber caps to access it). Control the level of water using the water level display in the back of the tank.

Step 8: Plug the power cord to electricity, turn the machine on, use the mist flow knob to adjust the mist level you desire and be cooled by the best mist cooling solution.

Remarks:

- Always leave a minimum of 12 inches of water inside the water tank to help with its stability
- Always move the water tank gently, pulling the equipment in a way from preventing accidents, whether it is full or not.



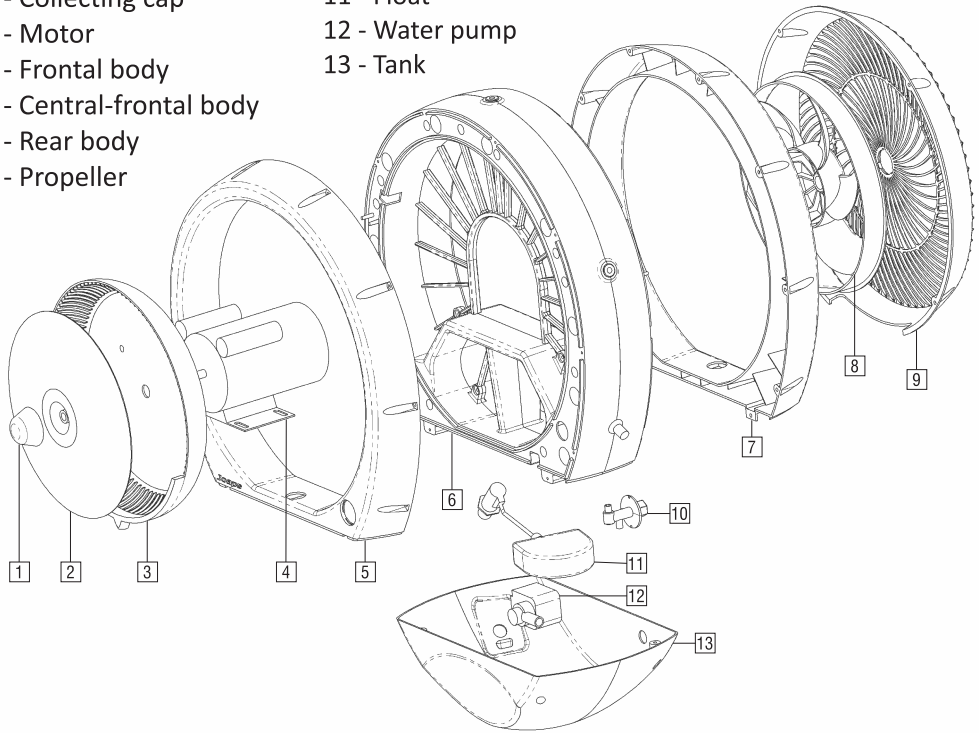
EcoJet Hurricane and EcoJet Cyclone

Operation

- The Ecojet System must be installed per factory instructions.
- The fan reservoir must be filled (reservoir fan) or the water line turned on (wall mount fan) prior to operation.
- The amount of mist can be adjusted by turning the grey knob on the back or side of the fan - clockwise to reduce mist counter clockwise to increase mist.
- Unlike regular air-conditioning equipment, the Ecojet System must be installed in open environments (open doors and windows).
- In air-conditioned environments, use JOAPE System to stabilize the relative humidity of air.
- In closed environments you must pay attention to humidity levels, we suggest you install a humidostat.
- In open environments, try to make air circulate following the natural course of air.
- Turn off the water supply when the fan is not in use (wall mount).
- Ecojet System must be clean in order to achieve its best performance.
- If unused for 10 days we suggest the tank (wall mount) or reservoir to be emptied. Remove the drain plug on the bottom to drain wall mount fans.
- Use liquid detergent and a brush to clean the equipment.
- Use only water-based essences.

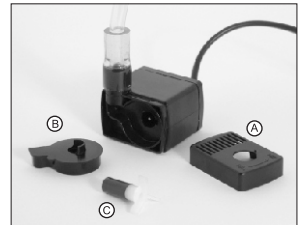
Components

- 1 - Finishing cone
- 2 - Centrifugal disk
- 3 - Collecting cap
- 4 - Motor
- 5 - Frontal body
- 6 - Central-frontal body
- 7 - Rear body
- 8 - Propeller
- 9 - Protective bars
- 10 - Mist valve
- 11 - Float
- 12 - Water pump
- 13 - Tank

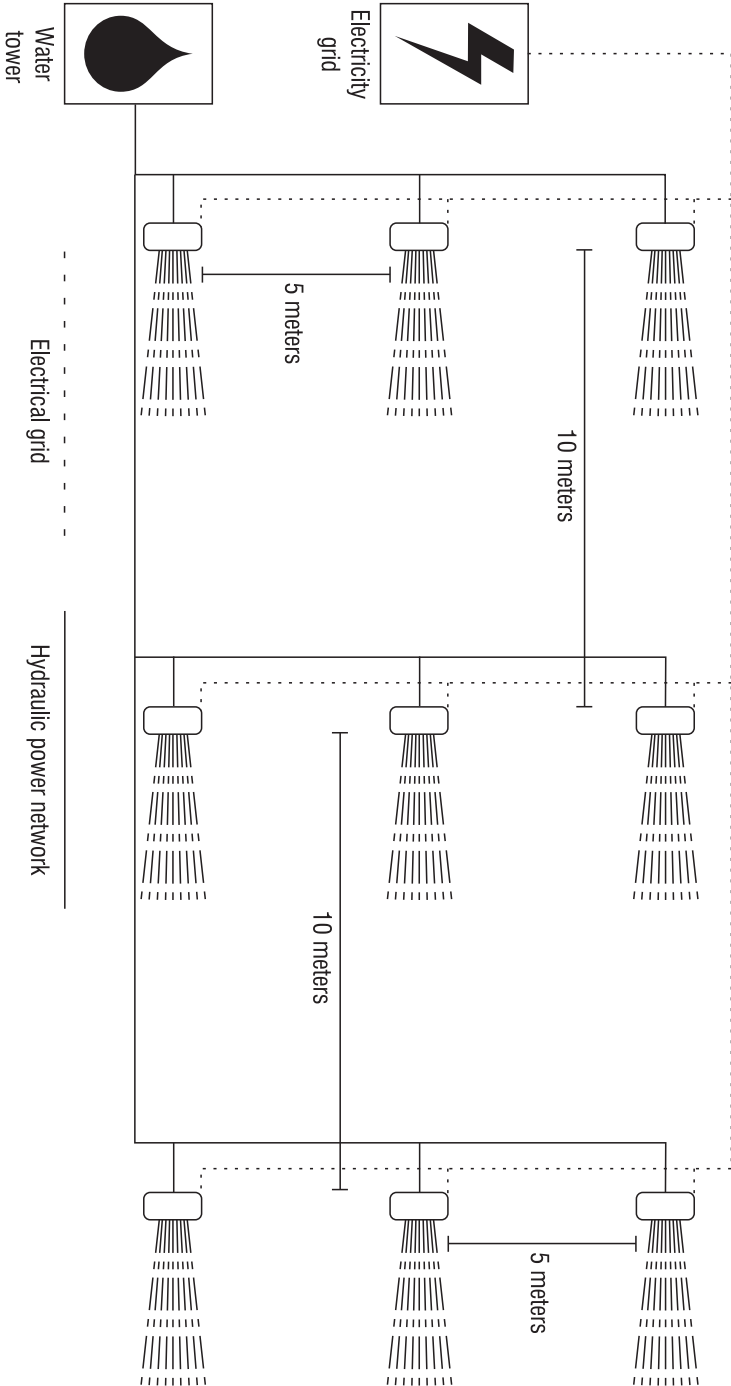


Water Pump Cleaning

- 1- Remove the pump from the tank.
- 2- Remove the water-entry frontal cover (item "A")
- 3- Remove the protective cover from the rotor (item "B")
- 4- Remove the propeller from the motor (item "C")
- 5- Clean all the pump parts with water and liquid neutral soap
- 6- Rinse all the parts and reassemble the pump.



Electric-Hydraulic Diagram



Problems and Solutions

Problem	Solution
The cooling system does not work	<ul style="list-style-type: none">• Make sure the cooling system is correctly connected to a proper power supply.
It will not produce mist	<ul style="list-style-type: none">• Make sure the device is connected to the water line.• Make sure the mist valve is open.• Clean the water pump.• The inner valve may be clogged.
Water tank overflow Dripping next to the mist	<ul style="list-style-type: none">• Check the float regulation.• Network overpressure.• The mist regulation valve may be too open.• There may be dirt in the winged reservoir.

NOTES

WARRANTY



Defective Return Policy

All Ecojet by Joape products com with a limited guarantee against defects in materials ans workmanship for a period of one (1) year from date of purchase.

Warehouse returns

1. Return Policy - Goods Shipped From Ecojet Warehouse
Customer will contact Ecojet and request a defective return authorization.
Upon presenting purchasing documentation (invoice copy, credit card receipt, etc.)
Ecojet by Joape will immediately approve and authorize return, assigning an RTA number.
2. Ecojet by Joape will, at their discretion:
 - refund the purchase price and advise customer to either destroy in field or return at Ecojet by Joape'e expense or
 - replace the defective product
3. Should Ecojet by Joape request that the product be returned they will provide prepaid shipping information to customer.
4. In the case of replacement product Ecojet by Joape will prepay the new product's shipping costs.

Distributor Sales returns

1. Return Policy - Goods Shipped from distributor Warehouse.
Customer will contact distributor and request RTA number.
Upon confirming warranty claim distributor will contact Joape for a RTA number.
2. Distributor must show purchase history
3. Points 2-4 above will apply after RTA number is assigned by Joape.

Contact number for all EcoJet by Joape return request is 305-713-4424 or via email at
admin@southbee.com

In all cases EcoJet by Joape will strive to settle all warranty claims within 5 working days of
initial request.

If used indoors Ecojet fans require an exchange of air sufficient to maintain proper humidity levels.