

SINCE 1839

**BRINLY**

SINCE 1839

**BRINLY**

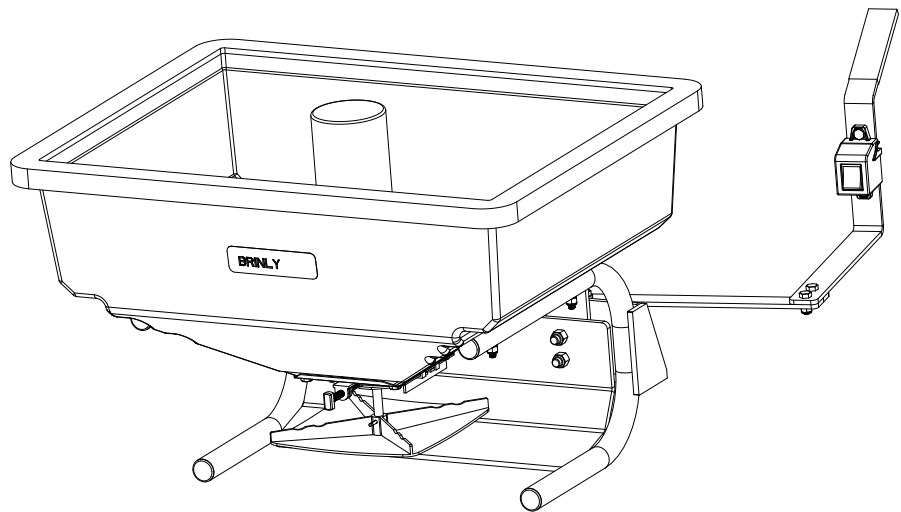
# OWNER'S MANUAL

## **80-LB BROADCAST SPREADER**

*SPREADER MODEL:*

**SDZ-80**

- Assembly
- Installation
- Operation
- Repair Parts



Visit us on the web!  
[www.brinly.com](http://www.brinly.com)

**Important:** This manual contains information for the safety of persons and property. Read it carefully before assembly and operation of the equipment!

# INTRODUCTION

Congratulations on the purchase of your new Brinly-Hardy Spreader! Your Spreader has been designed, engineered and manufactured to give you the best possible dependability and performance.



## CUSTOMER RESPONSIBILITIES

- Please read and retain this manual. The instructions enable you to assemble and maintain your lawn spreader properly.
- Please carefully read and observe the SAFETY section of this manual.
- Follow a regular schedule in maintaining and caring for your Brinly-Hardy Spreader.

## TABLE OF CONTENTS

SAFETY .....	2-3
COMPONENT VIEW AND REFERENCE LIST .....	4-6
ASSEMBLY .....	7-10
INSTALLATION .....	11-12
OPERATION .....	13-17
MAINTENANCE .....	17
SERVICE .....	18
SPECIFICATIONS .....	18-20
LIMITED WARRANTY .....	24

## RECORD PURCHASE INFORMATION

Record your purchase information in the spaces provided below:

**DATE OF PURCHASE** \_\_\_\_\_

**COMPANY NAME** \_\_\_\_\_

**COMPANY PHONE** \_\_\_\_\_

**SERIAL NUMBER** \_\_\_\_\_

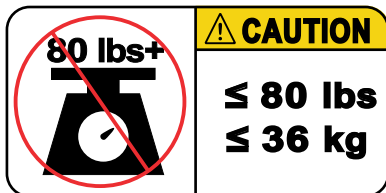
# SAFETY

## SAFETY LABELS AND NOTATION

The safety labels shown in this section are placed in important areas on your product to draw attention to potential safety hazards.

On your product safety labels, the words **DANGER**, **WARNING** and **CAUTION** are used with the safety-alert symbol. **DANGER** identifies the most serious hazards.

The operator's manual also explains any potential safety hazards whenever necessary in special safety messages that are identified with the word, **CAUTION**, and the safety-alert symbol.



1016973 (To Scale)



This symbol will help to point out important safety precautions throughout this manual. It means: **ATTENTION! BECOME ALERT! Your safety is involved.**



### CALIFORNIA - Proposition 65 Warning

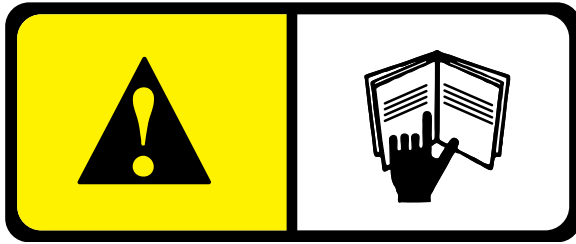
**WARNING:** Use of this product may cause exposure to chemicals known to the State of California to cause cancer, birth defects, or other reproductive harm.



**WARNING:** Carefully read and follow the chemical labels and Material Safety Data Sheets (MSDS) for all chemicals used and protect yourself according to the chemical manufacturer's recommendations. Ensure that as little skin as possible is exposed while using chemicals. Use appropriate Personal Protective Equipment (PPE) to guard against personal contact with chemicals, such as:

- Safety glasses, goggles, and/or face shield.
- Chemical-resistant gloves.
- Rubber boots or other substantial footwear.
- Hearing protection.
- Respirator or filter mask.
- Clean change of clothes, soap, and disposable towels, to be kept on-hand, in the event of a chemical spill.

# SAFETY



B-7063 (To Scale)

## GENERAL NOTES (OPERATION)

Caution should be taken when using any attachment. This attachment combined with the weight distribution, turning radius, and speed of vehicle can result in severe injury or death to operator, damage to vehicle, and/or attachment if not used properly. Follow all safety precautions noted in the vehicle owner's manual, including the following precautions:

- Do not exceed maximum capacity of attachment.
- Only use this product in the vehicle's tow mode/speed setting or less than 5 mph. Do not exceed 5 mph.
- Operating speed should always be slow enough to maintain control. Travel slowly, using caution when traveling over rough terrain. Avoid holes, rocks and roots.
- Slow down before you turn and do not turn sharply.
- Use caution when turning. Vehicle has greater tail swing with attachments.
- Use caution when operating around retaining walls and other raised embankments.
- Do not use attachment on steep slopes. A heavy load could cause loss of control or overturn attachment and vehicle. Additional weights need to be added to your vehicle.
- Reduce weight when operating on slopes.
- Keep all movement on slopes slow and gradual. Do not make sudden changes in speed, directions or turning.
- If you start and stop suddenly on hills, you may lose steering control or the vehicle may tip.
- Do not start or stop suddenly when going uphill or downhill. Avoid uphill starts.
- Slow down and use extra care on hillsides. Turf conditions can affect vehicle stability. Use extreme caution while operating near drop-offs.
- Do not drive close to creeks, ditches and public highways.
- Watch out for traffic when crossing roadways.
- Use care when loading or unloading the vehicle into a trailer or truck.
- The attachment can obstruct the view to the rear. Use extra care when operating in reverse.
- When reversing, back up straight using caution.
- Stop on level ground, disengage drives, set the parking brake, and shut off engine before leaving the operator's position for any reason including emptying the attachment.
- Use this attachment for intended purpose only.
- This attachment is intended for use in lawn care and home

applications. Do not use at speeds higher than maximum recommended speed.

- Always wear substantial slip-resistant footwear. Do not wear loose-fitting clothing, tie back long hair and do not wear jewelry.
- Keep your eyes and mind on your vehicle, attachment and area being covered. Do not let other interests distract you.
- Stay alert for holes and other hidden hazards in the terrain.
- Keep the vehicle and attachment in good operating condition and keep safety devices in place.
- The vehicle and attachment should be stopped and inspected for damage after striking a foreign object. Any damage should be repaired before restarting and operating the equipment.
- Keep all parts in good condition and properly installed. Fix damaged parts immediately. Replace worn or broken parts.
- Replace all worn or damaged safety and instruction decals. Keep all nuts, bolts and screws tight.
- Do not modify the attachment or safety devices. Unauthorized modifications to the vehicle or attachment may impair its function, safety and void the warranty.

## VEHICLE AND ITS SAFETY

- Know your vehicle controls and how to stop safely. READ YOUR VEHICLE OWNER'S MANUAL before operating.
- Check the vehicle's brake action before you operate. Adjust or service brakes as necessary.
- Stopping distance increases with speed and weight of load. Travel slowly and allow extra time and distance to stop.
- Use only approved mount (Toro model no. 131-3966). Do not connect this attachment except at the approved mount point.
- Do not operate without counterweights (Toro model no. 131-7658).
- Do not shift to neutral and coast downhill.
- Do not allow adults to operate the vehicle without proper instruction or without having read the owner's manual.
- Do not allow children to operate the vehicle.

## PROTECT THOSE AROUND YOU

- Before you operate any feature of this attachment or vehicle, observe your surroundings and look for bystanders.
- Keep children, bystanders and pets at a safe distance away while operating this or any attachment.
- Use care when reversing. Before you back up, look carefully behind for bystanders.

## KEEP RIDERS OFF ATTACHMENT & VEHICLE

- Do not carry passengers.
- Do not let anyone, especially children, ride in/on this attachment, the vehicle or mount bracket.
- Riders are subject to injury such as being struck by foreign object and/or being thrown off during sudden starts, stops and turns.
- Riders may also obstruct the operator's view resulting in this attachment being operated in an unsafe manner.

# PARTS LIST AND REFERENCE

REF	PART NO.	DESCRIPTION	QTY	REF	PART NO.	DESCRIPTION	QTY
1	1017014	Hopper Drilled #80 w/ decals	1	25	2M1232P-FT	Bolt, Hex Hd 3/8x2	4
2	1008169	Cover, 80# Hopper	1	26	30M1200P	Nut, Reg Hex, 3/8"-16	4
3	1007031	Motor	1	27	45M0909SS	Washer, plain, SS	6
4	1007030	Boot, Motor	1	28	B-4786	Nut, Nylon Lock 5/16-18	1
5	1000198	Felt Washer	1	29	B-4820	Nut, Nylon Lock, 3/8"-16	4
6	1000223	Agitator Wire	1	30	D-146P	Cotter, Hairpin 1/8",#211	1
7	1001554	Washer, Nylon	8	31	R-803	Grip, Vinyl 3/16"X 1-1/4"	1
8	1005091	Cotter Pin 1/8x1, SS	1	32	1016969	Plastic Pad	1
9	1005198	Nut, NylonLock 1/4-20, SS	15	33	1016970-10	Formed Plate, Pntd	1
10	1006699-10	Motor bracket, pnt.	1	34	1007889*	Nylon Cable (Zip) Tie	2
11	1006997	Fan, Drilled	1	35	2M0828SS	Bolt, HexHd 1/4x1-3/4 SS	4
12	1007005	Lock Washer, #10 SS	4	36	B-6031*	Wiring Harness, Batt Conn	1
13	1007042	Switch/Box assembly	1	37	B-6485	Cap, Plastic, 1"OD	4
14	1016971	Guard	1	38	1000356	Coupling, Spinner Shaft	1
15	1016815-10	Hopper Support Painted	1	39	1001251*	Set Screw 1/4 x 3/8" SS	2
16	1017013	Fomed Plate with decal	1	40	1001352	Washer, #10 SS	4
17	1016878	Control Rod	1	41	1007004	Nut, Hex 10-32 SS	4
18	1016879-10	Plate, Lever Painted	1	42	1007029	Shaft Extension	1
19	1016880-10	Formed, Handle Painted	1	43	1001260	Screw, 1/4 x 3/4, SS	4
20	1016881-10	Formed, Pivot Painted	1				
21	1016968	Pin, Hitch 1/2" X 2-3/4"	1				
22	11M1016P	Bolt, Carriage, 5/16 x 1	1				
23	2M0812P	Bolt, Hex Hd 1/4 x 3/4	4				
24	2M0816P	Bolt, Hex Hd 1/4 x 1	3				

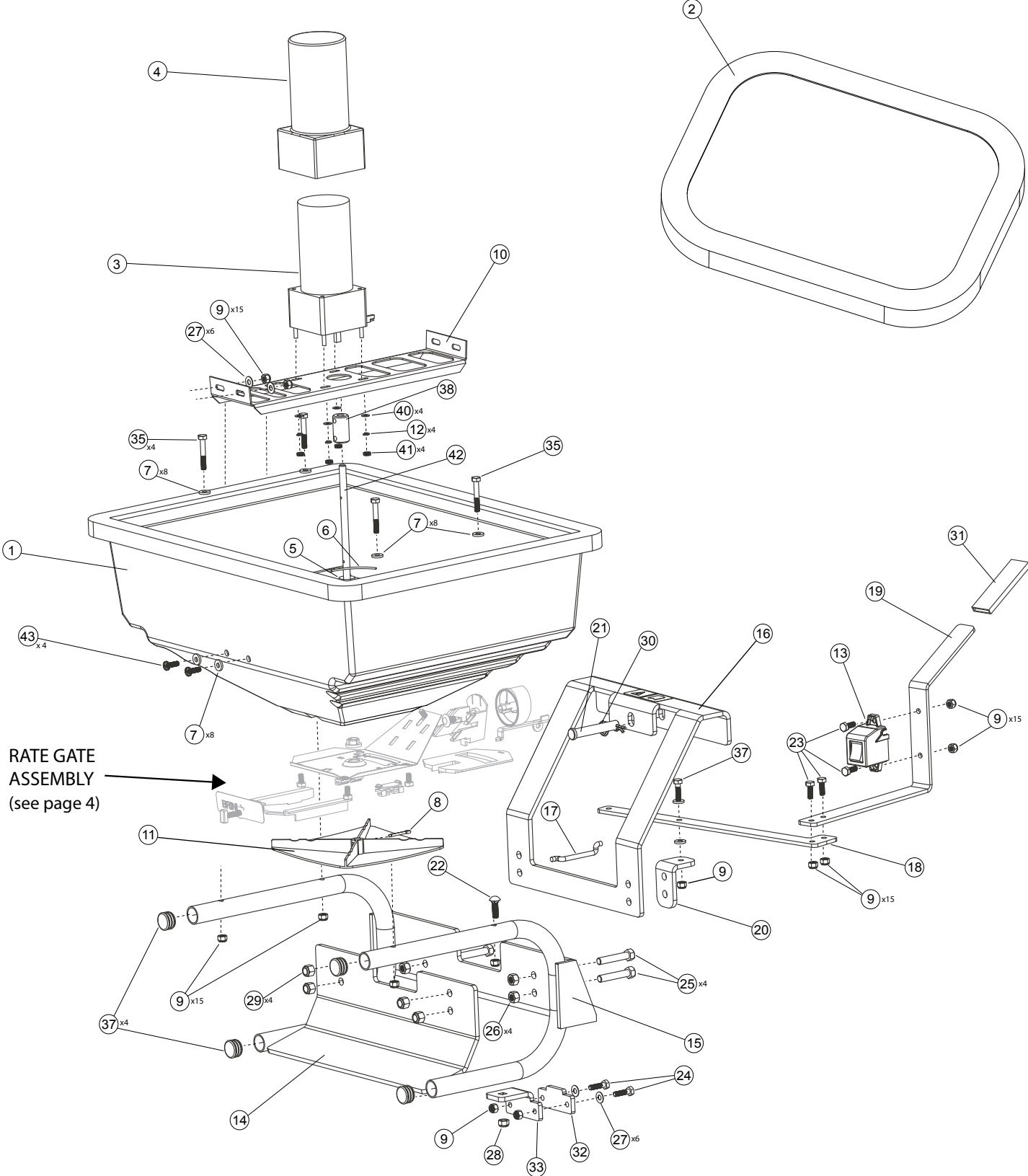
\*Not shown.

## Tools Required for Assembly:

- 7/16" wrench
- 7/16" socket & ratchet
- 9/16" wrench
- 9/16" socket & ratchet
- 1/2" socket & ratchet
- Pliers
- Gloves

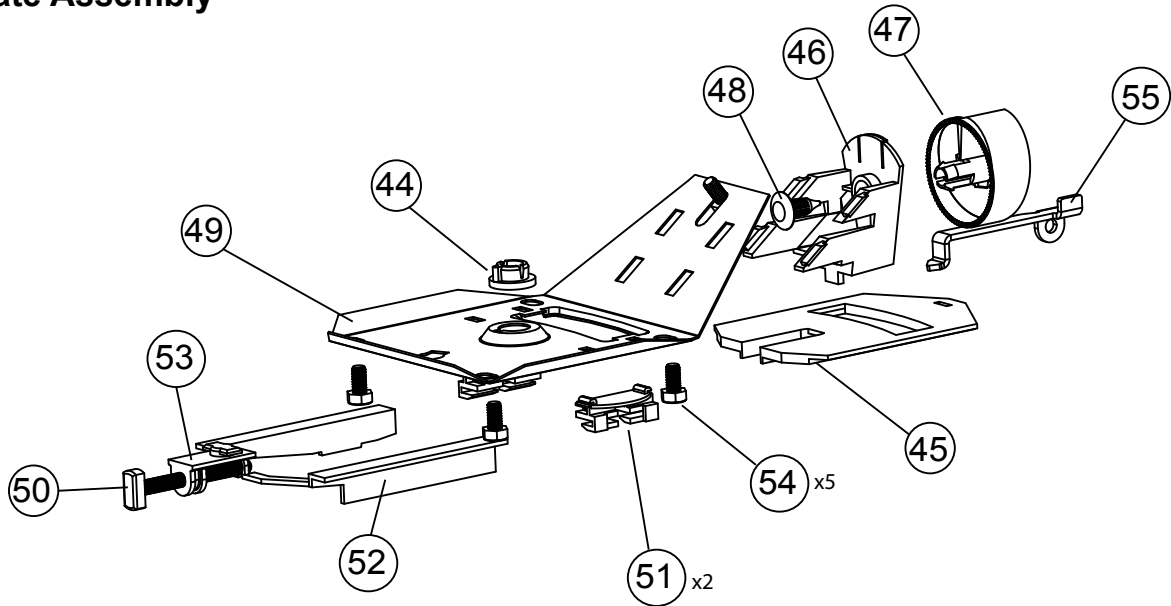
# PARTS LIST AND REFERENCE

## EXPLODED VIEW



# PARTS LIST AND REFERENCE

## Rate Gate Assembly



REF	PART NO.	DESCRIPTION	QTY	REF	PART NO.	DESCRIPTION	QTY
44	1000203	Hopper Bottom Bearing	1	52	1001523	Accuway Diffuser	1
45	1000210	Rate Gate	1	53	1001525	Accuway Adj. Nut Bracket	1
46	1000211	Dial Mount	1	54	1004880	Bolt, HexHd 1/4x1/2 SS	5
47	1000213	Dial, Plastic	1	55	1008431-01	Rate Gate Link, Polished	1
48	1000215	Pine Tree Clip	1				
49	1001007	Hopper Bottom Plate	1				
50	1001526	Screw, 1/4 x 3/4, SS, Accuway Adj. Screw	1				
51	1001521	Guide, Rate Gate/Accuway	2				

# ASSEMBLY



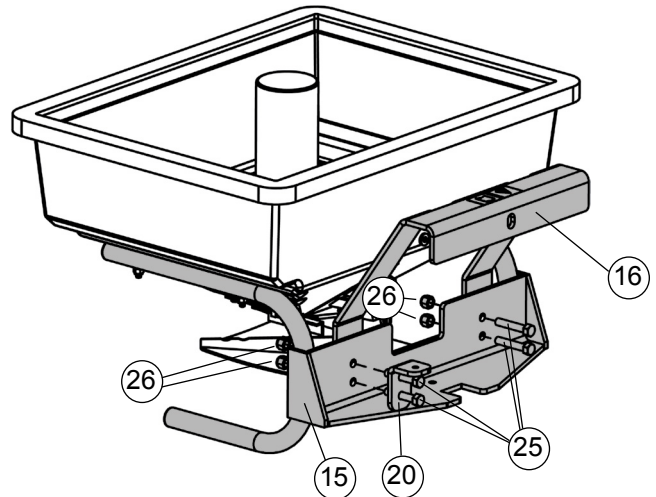
Toro mount (131-3966) and counterweight (131-7658) are required to be installed before use.

## Assembly Step 1

1. Install the Toro mount (131-3966) and counterweight (131-7658) to mower per kit instructions.  
*If you have already done so, skip to Step 2.*

## Assembly Step 2

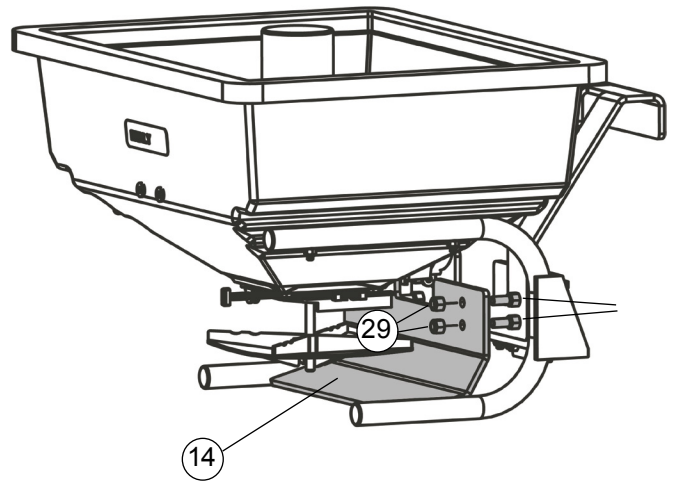
1. Position the formed plate (16) behind the hopper support (15).
2. Line up the pivot bracket (20) with the two holes on either side – this will be the side of the open/close lever – and tighten together using four  $\frac{3}{8}$  x 2" bolts (25) and four  $\frac{3}{8}$  x 16 nuts (26).



# ASSEMBLY

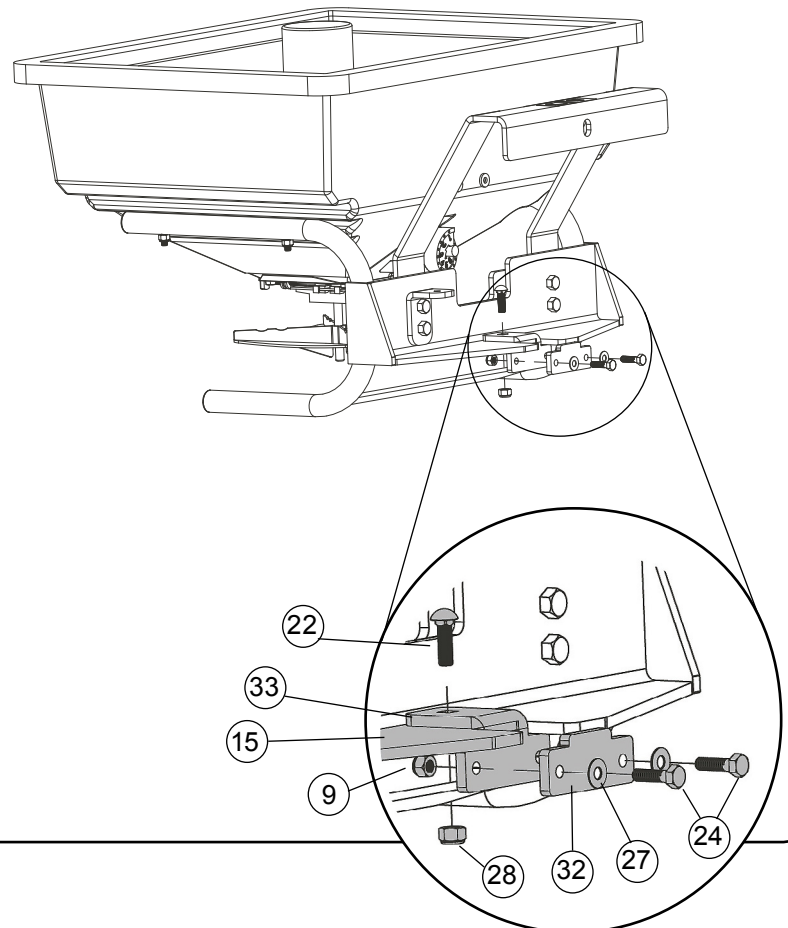
## Assembly Step 3

1. Attach the plastic guard (14) to the four 3/8 x 2" extended bolts (25) under the hopper.
2. Tighten down with four 3/8 x 16 nylon nuts (29).



## Assembly Step 4

1. Attach the bracket (33) to the hopper support (15) using the 5/16 X 1" carriage bolt (22) and 5/16-18 locknut (28).
2. Attach the plastic piece (32) to the bracket (33) with two 1/4 x 1" bolts (24), two washers (27), and two 1/4-20 locknuts (9).





# ASSEMBLY

## Assembly Step 5

1. Maneuver the control rod (17) into the rate gate tab (55), then insert the control rod (17) into the first single hole of the open/close lever (18) located at the far right end of the lever.
2. Attach the open/close lever (18) to the pivot bracket (20) using one 1/4 x 1" bolt (24), a nylon washer (7) on both sides of the open/close lever (18), and one 1/4-20 locknut (9).

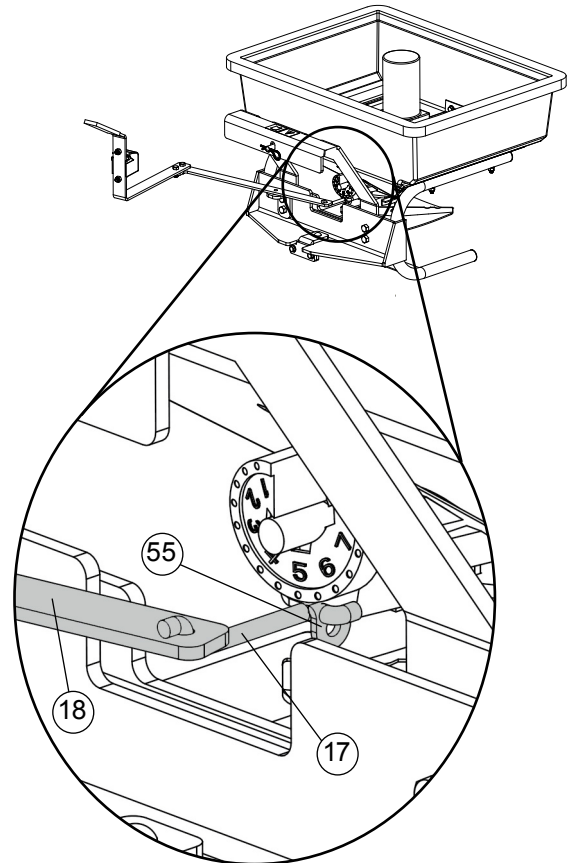
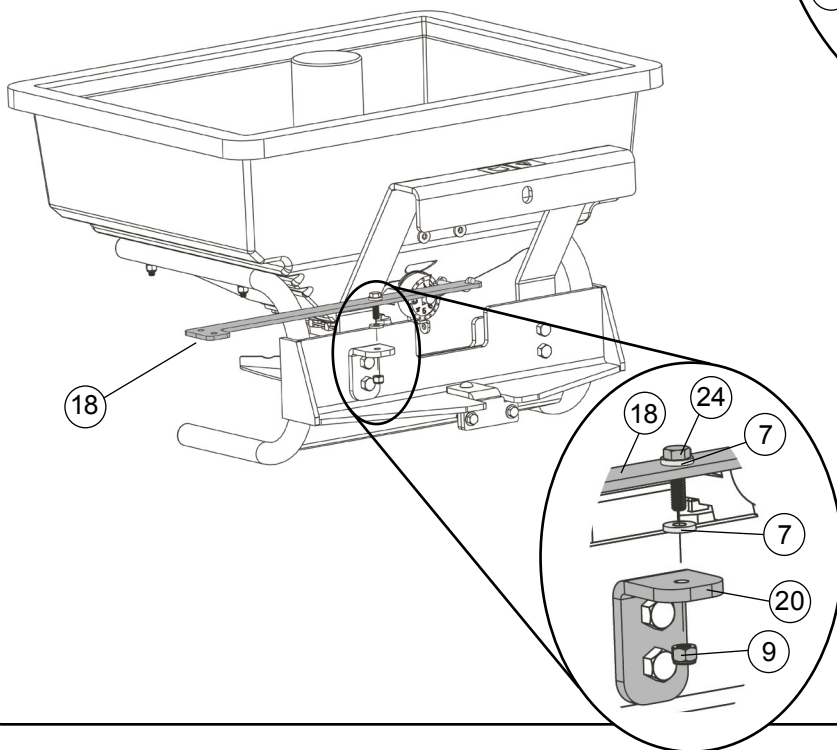


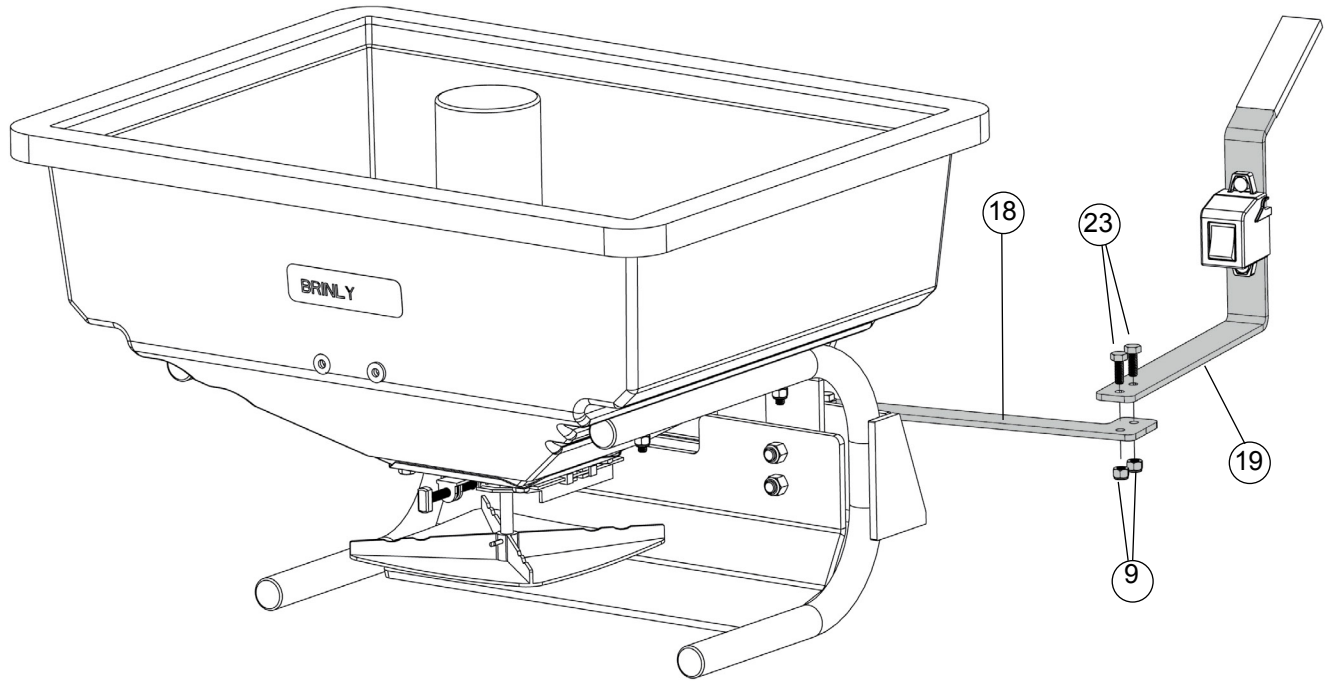
Figure A



# ASSEMBLY

## Assembly Step 6

Attach the first part of the open/close lever (18) to the second part (19) using two 1/4 x 3/4" bolts (23) and two 1/4-20 locknuts (9).

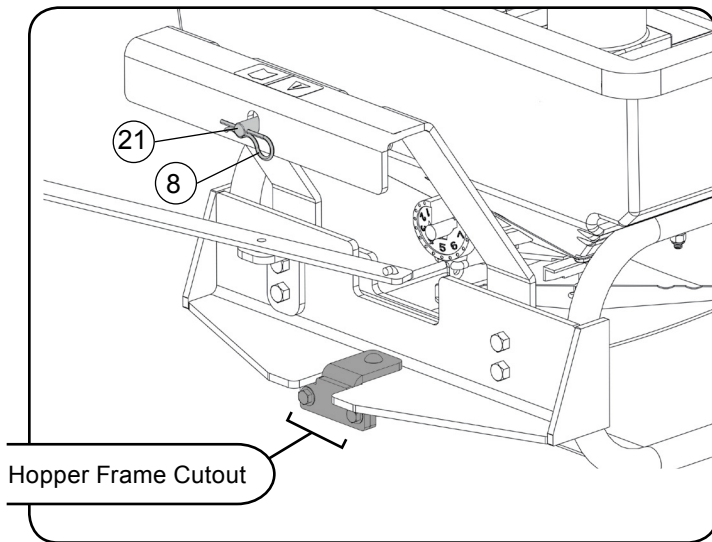


# INSTALLATION

## SPREADER INSTALLATION



**CAUTION: Avoid injury!** Before installing spreader, make sure the vehicle is parked safely.



1. Park machine safely. (See vehicle manual.)
2. Align the spreader with vehicle mounting kit.
3. Install the Hitch Pin (21) through the support and top tube of the mounting kit. Secure the Hitch Pin with Hairpin Cotter (8).  
*NOTE: Ensure the cutout in the hopper frame (see above) is nested into the vertical tube of the mounting kit.*
4. Ensure the counterweight (131-7658) is installed before use.

## SPREADER REMOVAL

*NOTE: Refer to the illustration above when working through the steps in this section.*

1. Park machine safely. (See vehicle manual.)
2. Unload the spreader hopper before disconnecting from the vehicle.
3. Remove the hairpin cotter and the hitch pin.
4. Pull the hopper up and away from the receiver.
5. Install the hitch pin and hairpin cotter in the spreader support for storage.
6. Remove counterweight and store with spreader.

*NOTE: Counterweight should only be used when attachment is mounted.*

## ELECTRICAL CONNECTION INSTALLATION

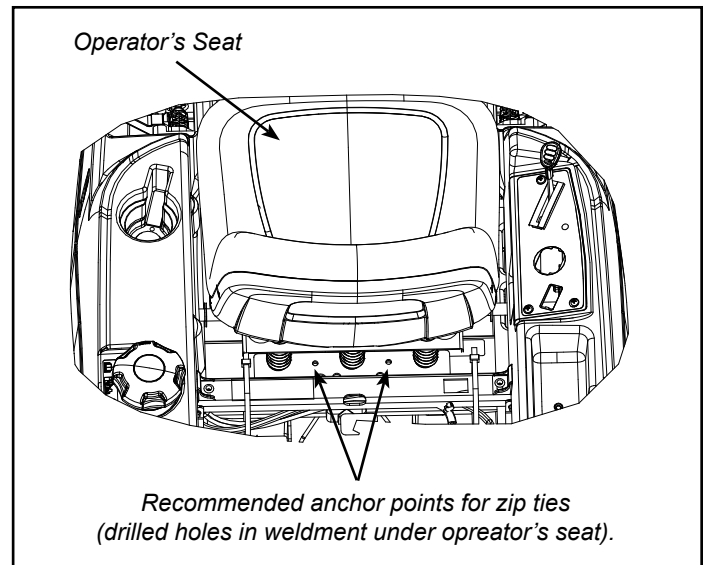


**CAUTION: Avoid injury!** Care should be used when working around batteries.

Use insulated tools when making battery connections. Heavy gloves and eye protection should be worn when making battery connections.

1. Select the proper tools to remove the leads to the battery terminals.  
*NOTE: If you do not have insulated tools, use electrical tape to wrap all exposed non-working surfaces of the tools. It is important to take steps to reduce the risk of causing an electrical spark.*
2. Put on gloves and eye protection.
3. Verify that the red lead is attached to the positive (+) battery terminal and the black lead is attached to the negative (-) battery terminal.
4. Attach the red lead (with the fuse) of the Battery Connecting Wiring Harness (36) and the red lead from your engine to the positive (+) battery terminal.
5. Using the Battery Connection Wiring Harness (36) attach the black lead and the black lead from your engine to the negative (-) battery terminal.

*NOTE: The Battery Connection Wiring Harness (36) contains a 15 amp blade-type fuse.*

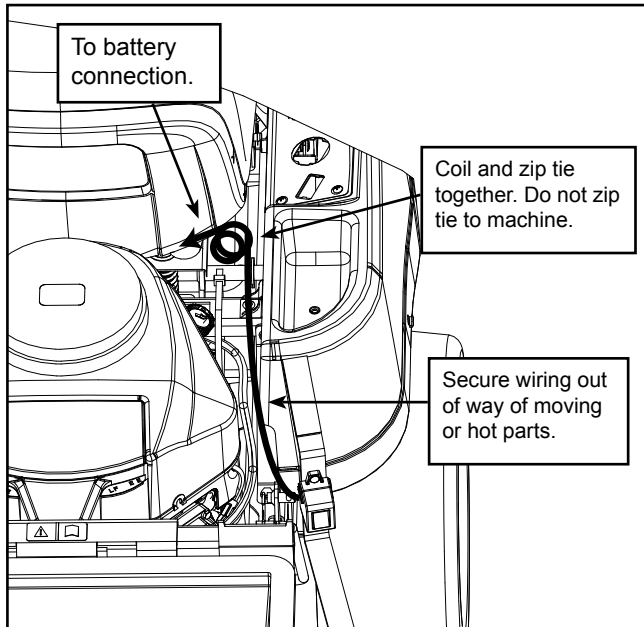


*NOTE: Ensure that both battery terminals and battery leads do not make contact with seat. Use enclosed zip tie (34) to secure the Battery Connection Wiring Harness (30).*

# INSTALLATION

6. Attach the Wiring Harness with Switch (13) to the connector terminal end of the Battery Connection Wiring Harness (36). Use the enclosed zip tie (34) to secure excess wire (see reference picture below).

*NOTE: The terminal connector with the longer leads from the Wiring Harness with Switch (13) are connected to the terminal connector on the Battery Connection Wiring Harness (36).*



*NOTE: Switch-wire harness colors do not need to match mating-connector wire colors for the motor to function.*

**CAUTION: Avoid injury!** Care should be used when routing the wiring harness to the spreader.



Do not place the wiring harness in areas that the wires can be pinched or damaged.

Place the wires to minimize a tripping hazard when getting on or off the towing vehicle.

## ELECTRICAL CONNECTION TIPS

- Your spreader uses 12 volt DC power from your tractor battery.
- Attach the red lead to the positive terminal of your battery, and attach the black lead to the negative terminal of your battery.
- Caution should always be exercised whenever working on or around batteries.
- Heavy gloves and eye protection should be worn when making connections to the battery.
- Make sure to periodically check the fuse within the front fuse harness.
- Do not disconnect switch terminals.
- Always disconnect main spreader wire harness from front fuse harness and remove with spreader when not in use.
- Ensure all wiring is secured to prevent accidents or damage.
- Do not leave motor running for extended periods (1-2 minutes) without spreading material.
- Ensure tractor battery has a full charge.

7. Attach the other end of the remaining terminal lead connector from the Wiring Harness with Switch (13) to the terminal lead connector coming from the motor (3). If the motor begins to run, use the switch to turn the motor off.

*NOTE: The Battery Connection Wiring Harness (36) can remain connected to the battery of the towing vehicle when spreading operations are complete. Simply detach the Wiring Harness with Switch (13) terminal connector from the Battery Connection Wiring Harness (36) terminal connector.*

# OPERATION

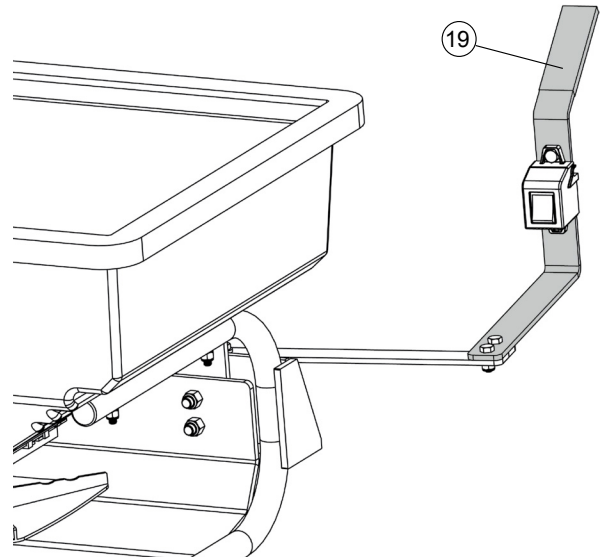


**CAUTION: Avoid damage and personal injury! TIPPING HAZARD!** The hopper has a weight capacity of 80 lb (36 kg). Loading the hopper with more than this maximum weight capacity can damage the spreader or machine, including tipping or overturning.

## Operation Step 1

### USING THE ON/OFF CONTROL LEVER

1. Use On/Off control lever (19) to open and close the hopper gate while spreader is in motion. This starts and stops material flow.
2. Move the control lever towards the operator to open the flow gate.
3. Move the control lever away from the operator to close the flow gate.



## Operation Step 2

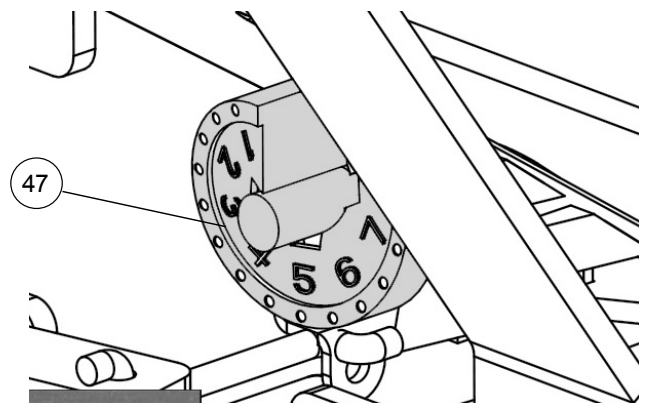
### USING THE FLOW CONTROL DIAL

Flow control dial (47) rotates to adjust the opening size in hopper bottom. Dial has nine numbers with 10 positions between each number for fine adjustment. Small numbers provide the smallest opening.

*Turn dial to adjust for desired application flow.*

### DETERMINING APPLICATION FLOW SETTING

1. Check material manufacturer's container for recommended application flow and setting.
2. Use application flow setting charts when spreading grass seed or when material size and desired coverage is known, but no setting is recommended by the material manufacturer.



# OPERATION

**CAUTION: Avoid injury! Chemicals can be dangerous.** Avoid injury to operator or bystanders:



- Read chemical container label for handling instructions. A Material Safety Data Sheet (MSDS) should be supplied by the chemical dealer and provides proper safety information.
- Wear proper clothing and safety equipment while handling or applying chemicals.
- Prohibit all smoking, drinking, and eating around chemicals.

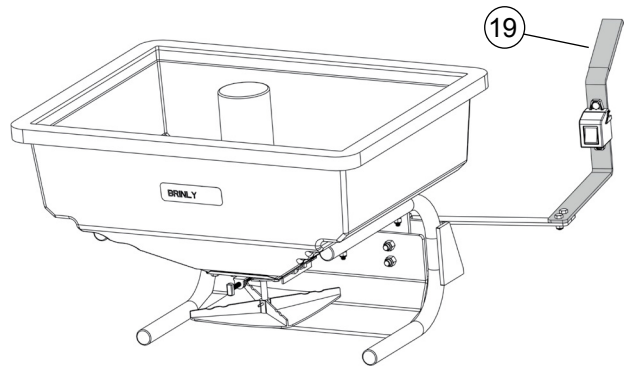
## Operation Step 3

### FILLING THE SPREADER

1. Use on/off control lever (32) to close product gate at hopper bottom.

*NOTE: Fill spreader on a flat, level surface. Spreader may be unstable when fully loaded on an incline.*

2. To avoid material loss, fill spreader on a sidewalk, driveway, plastic sheet or cardboard.



**CAUTION: Avoid injury!** Excessive load can cause loss of traction and loss of control on slopes. Stopping distance increases with speed and weight of load.

### Determining Weight for Spreader

The following maximum load weight capacity is the average weight loaded with fertilizer to the top of the spreader.

<u>Model Spreader</u>	<u>Weight Capacity</u>
SDZ-80	80 lb

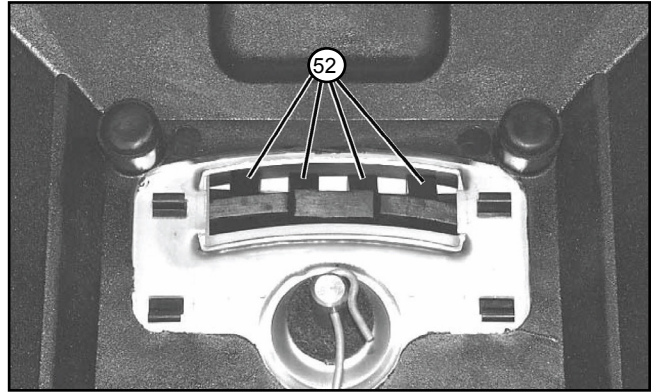
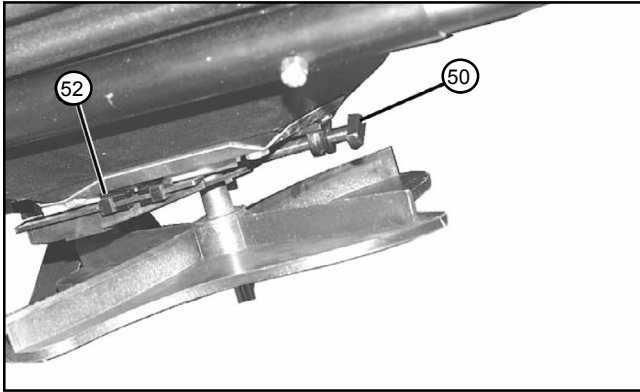


**CAUTION: Avoid injury!** Additional weight is required when towing; add weight at or forward of the rear wheels. Adding weight behind the rear wheels can affect machine steering. Refer to your vehicle manual.



# OPERATION

## Operation Step 4



## ADJUSTING THE SPREAD PATTERN

Adjusting knob (50) moves diffuser plate (52) forward and backward to center spread pattern and reduce side-throw (or skewing).

Many variables can affect the spreading pattern:

- Product size, weight, shape, surface finish
- Spreading rate (light, medium, heavy)
- Weather conditions
- Operating speed
- Tilting of spreader
- Condition of spreader and spreader spinner

Because of these variables, the diffuser plate must be set for each type of application. Use the following procedure when setting spread pattern:

*NOTE: This adjustment is very sensitive. Turning diffuser knob (A) just a little will result in drastic change to the spread pattern.*

1. On a flat, bare surface such as a paved driveway, operate the spreader and observe the spreading pattern. If spreading pattern is centered around spreader, do not adjust diffuser.
2. If spreading pattern is not centered around spreader, adjust as follows and retest.

*NOTE: Adjusting spread pattern will not change the width of spread. Never adjust so the diffuser plate splits the material flow to both center and outside of spreader. (Knob centered between full clockwise and full counterclockwise.)*

If spreading is heavy to the left of center, turn diffuser knob counterclockwise all the way; then turn knob clockwise until edge of diffuser plate (52) directs material slightly to outside of spreader as it falls on the spinner and test pattern is centered.

If spreading is heavy to the right of center, turn diffuser knob clockwise all the way; then turn knob counterclockwise until edge of plate directs material slightly to center of spreader as it falls on the spinner. Continue to turn knob in small increments until test pattern is centered.

## OPERATING TIPS FOR UNIFORM SPREADING

1. Keep spinner blades clean. A buildup of material on the spinner blades can cause uneven spreading.
2. Use on/off control to open and close product gate only when spreader is in motion. Close product gate as you enter turn-around areas.
3. Maintain even, normal travel speed of 3 mph/264 fpm (4.8 kph/80 meters per min.). Faster travel throws material further for a wide spread pattern and lighter coverage.
4. Slower travel spreads a narrow pattern with heavier coverage.
5. Travel in straight rows. Keep your eyes on the far end of the area to keep spreader in alignment with previous pass.

# OPERATION

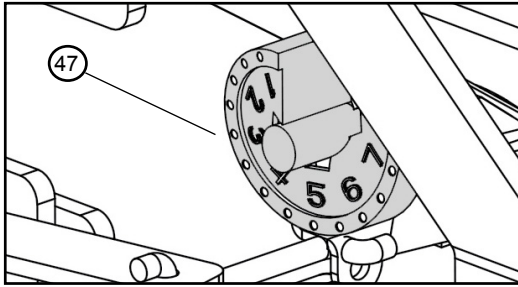
**NOTE: Spreader tapers the spreading edge, which allows you to operate at approximately spreading widths. Extra material can be spread under trees and other high feeding areas without showing the spreading edges.**

## Operation Step 5

Two methods of spreading the material, Dual Pass and Single Pass, are described below:

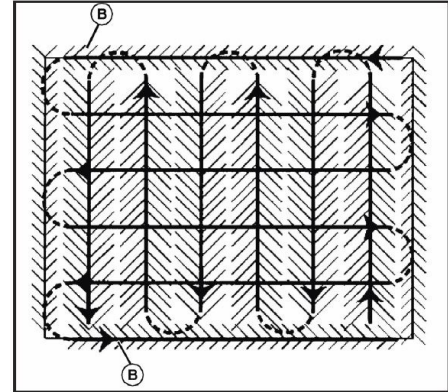
### DUAL PASS COVERAGE *(Preferred Method)*

**NOTE:** This method is also known as the “Half Flow” method, which consists of making two passes in cross directions with flow control dial set at a half flow setting. This method provides the most complete coverage while correcting for operation or flow errors made with a single pass.



1. Set flow control dial (47) to “Half Flow” setting described in “Understanding Full and Half Flow.”

**NOTE:** “Half Flow” is a proportional reduction of “Full Flow,” not one-half of “Full Flow.” See Flow Setting Tables.

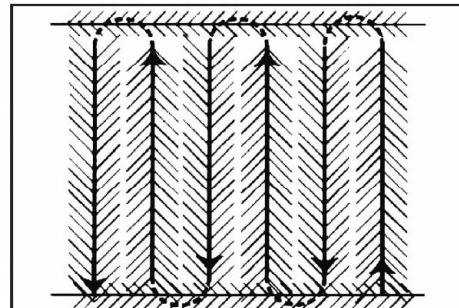


2. Spread header strips (B) at each end of area. This allows a turn-around area to align spreader for next pass.
3. Make passes between header strips at each end of area. (Refer to “Keys to Uniform Spreading” covered previously in manual.) (See center illustration.)
4. Repeat steps two and three using passes in cross direction to those used previously. (See bottom illustration.)

### SINGLE PASS COVERAGE

**NOTE:** This is also known as the “Full Flow” method, which consists of making a single pass over area with flow control dial set at full flow setting.

1. Set flow control dial to “Full Flow” setting. (see flow setting tables earlier in this manual).
2. Perform steps two and three under “Dual Pass Coverage.”



**IMPORTANT: Avoid damage! Never leave fertilizer in the hopper.** Fertilizer draws moisture, forms clumps, causes unnecessary rusting and deterioration of spreader, and may jam controls and other moving parts. Salt residue is especially corrosive. Clean and oil spreader immediately after each use.



# OPERATION

## Operation Step 6

### SPREADING ROCK SALT

*NOTE: Use higher flow settings (5-9) for wider product opening when spreading salt.*

1. Be certain that agitator wire is installed - to break up clumps.
2. Starting with flow setting at 5, make a trial pass over the spreading area and check coverage. Adjust flow setting up to improve coverage or down to reduce coverage.
3. After spreading, be sure to thoroughly rinse salt dust from all surfaces, as salt is highly corrosive.

# MAINTENANCE

## MAINTENANCE TIPS

- The key to years of trouble-free service is to keep your spreader clean and dry.
- Never allow material to remain in hopper for extended periods of time.
- Should rust develop, sand lightly & then paint area with enamel.
- Periodically check all fasteners for tightness.
- Rinse/dry inside and outside of spreader after each use. Move flow control as you rinse, to avoid build up of material.

## LUBRICATION INTERVALS

Under normal operating conditions, lubricate spreader three-to-four times a year. Lubricate more often if frequently operated under adverse conditions.

### Cleaning & Lubricating After Each Use

*Clean and oil spreader immediately after each use.*

- **Drive vehicle to a designated cleaning area.**  
(A driveway or easy-to-clean surface).
- **Choose one of the following methods of cleaning:**
  1. Wipe spreader thoroughly with an oily cloth.
  2. Blow off spreader with compressed air.  
(Keep spreader dry).

**CAUTION: Avoid injury! Compressed air can cause debris to fly a long distance.**



- Clear work area of bystanders.
- Wear eye protection when using compressed air for cleaning purposes.
- Reduce compressed air pressure to 210 kPa (30 psi).

The above methods are listed in order of preference. A good oil wiping or dry cloth cleaning is recommended. It is almost impossible for rust and corrosion to form on a clean, dry, oiled surface.

When spreader is completely dry, lubricate all moving parts, especially spinner drive and hopper bottom.

## WASTE DISPOSAL

### Chemical Disposal

Improper chemical disposal can pollute the environment and cause health issues.

Follow the disposal directions on the chemical manufacturer's label. Dispose of chemicals and containers in accordance to local/state/federal laws.

# SERVICE

---

## SERVICE

### Getting Quality Service

Quality Continues with Quality Service

We provide a process to handle your questions or problems.

Follow the steps below to get answers to any questions you may have about your product.

1. Refer to your attachment and machine operator manuals.
2. In North America or Canada, call 1-877-728-8224. Provide product serial number (if available) and model number.

## SPECIFICATIONS

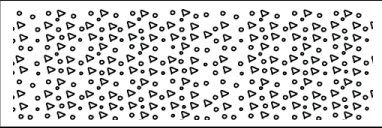
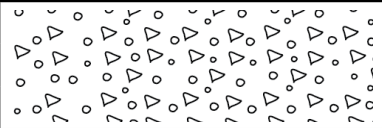
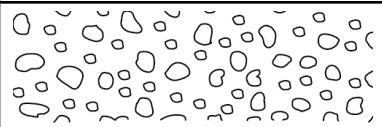



---

MAXIMUM SPEED .....	5 mph
HOPPER CAPACITY .....	80 lbs
FUSE (BLADE TYPE) .....	15 amp
EMPTY WEIGHT .....	40 lbs
MAXIMUM WEIGHT .....	120 lbs

# SPECIFICATIONS

## APPLICATION FLOW SETTINGS

(By Material Size and Coverage)

Product	Particle Size	Lbs. per 1000 sq. ft.	Dial Settings Full Rate Once Over	Dial Settings Half Rate Twice Over
Fine Pellets		1	3.6	3.1
		2	4.0	3.5
		3	4.2	3.7
Mixed Fine Pellets		2	3.7	3.2
		4	4.7	4.1
		6	5.2	4.5
Small Pellets		2	3	2.2
		4	4.2	3.7
		6	4.5	4
Nitrogen Pellets Medium Size		1	3.5	3
		2	4.2	3.7
		3	4.7	4
Medium Pellets and Granuals		2	3.5	3
		4	4.2	3.8
		6	5.2	4.5
Large Heavy Pellets		2	3.8	3.3
		4	4.9	4.1
		6	5.9	4.9

## UNDERSTANDING FULL AND HALF FLOW SETTINGS

### FULL FLOW

*Setting is used when a single pass (once over) operation is planned.*

### HALF FLOW

*Setting is used for two pass (twice over) operation and improved coverage.*

Half Flow is a proportional reduction of Full Flow not one-half of Full Flow. For half flow application, set flow control dial according to "Half Flow" value shown in appropriate table. Do not set flow dial at half the recommended full flow value.

*Note: Use "Full Flow" setting when single pass (once over) operation is planned. Use "Half Flow" setting for two pass (twice over) operation and improved coverage.*

# SPECIFICATIONS

## GRASS SEED FLOW SETTINGS

Product	Lbs. per 1000 sq. ft.	Dial Settings Full Rate Once Over	↑ ↓	Dial Settings Half Rate Twice Over	↕ ↔	Spread Width (in feet)
Blue Grass or Red Top	0.50	1.87		-		6
	1.00	3.00		-		6
	2.00	3.75		-		6
Park, Merion, Delta, Kentucky Bluegrass	0.50	3.75		-		6
	1.00	4.50		-		6
	2.00	5.25		-		6
Hulled Bermuda	2.00	4.15		3.38		9
	3.00	4.50		3.75		9
	4.00	4.87		4.15		9
Mixtures (including coarse seed)	2.00	9.0		-		9
	4.00	9.75		-		9
	6.00	-		-		-
Rye Grasses and Tall Fescue	2.00	9.00		-		9
	4.00	-		-		-
	6.00	-		-		-
Dichondra	0.25	2.85		-		12
	0.50	3.20		-		12
	0.75	3.75		-		12
Pensacola Bahia	4.00	6.75		5.62		10.5
	5.00	7.15		6.00		10.5
	6.00	7.50		6.37		10.5

# NOTES

---

---

# NOTES

---

---

# NOTES

---

---

---

**MANUFACTURER'S LIMITED WARRANTY  
FOR**



The limited warranty set forth below is given by Brinly-Hardy Company with respect to new merchandise purchased and used in the United States, its possessions and territories.

Brinly-Hardy Company warrants the products listed below against defects in material and workmanship, and will at its option, repair or replace, free of charge, any part found to be defective in materials or workmanship. This limited warranty shall only apply if this product has been assembled, operated, and maintained in accordance with the Operator's manual furnished with the product, and has not been subject to misuse, abuse, commercial use, neglect, accident, improper maintenance, alteration, vandalism, theft, fire, water, or damage because of other peril or natural disaster.

Normal Wear Parts or components thereof are subject to separate terms as follows: All normal wear parts or component failures will be covered on the product for a period of 90 days.

Parts found to be defective within the warranty period will be replaced at our expense. Our obligation under this warranty is expressly limited to the replacement or repair, at our option, of parts found to be defective in material and workmanship.

**HOW TO OBTAIN SERVICE:** Warranty parts replacements are available, ONLY WITH PROOF OF PURCHASE, through our Customer Service Department. Call 877-728-8224.

This limited warranty does not provide coverage in the following cases:

- a) Routine maintenance items such as lubricants and filters.
- b) Normal deterioration of the exterior finish due to use or exposure.
- c) Transportation and/or labor charges.
- d) The warranty does not include commercial and/or rental use.

**No implied warranty, including any implied warranty of merchantability of fitness for a particular purpose, applies after the applicable period of express written warranty above as to the part as identified below. No other express warranty whether written or oral, except as mentioned above, given by any person or entity, including a dealer or retailer, with respect to any product, shall bind Brinly-Hardy Co. During the period of the warranty, the exclusive remedy is repair or replacement of the product as set forth above.**

**The provisions as set forth in this warranty provide the sole and exclusive remedy arising from the sale. Brinly-Hardy Co. shall not be liable for incidental or consequential loss or damage including, without limitation, expenses incurred for substitute or replacement lawn care services or for rental expenses to temporarily replace a warranted product.**

Some states do not allow the exclusion or limitation of incidental or consequential damages, or limitations on how long an implied warranty lasts, so the above exclusions or limitations may not apply to you.

During the warranty period, the exclusive remedy is replacement of the part. In no event shall recovery of any kind be greater than the amount of the purchase price of the product sold. Alteration of safety features of the product shall void this warranty. You assume the risk and liability for loss, damage, or injury to you and your property and/or to others and their property arising out of the misuse or inability to use this product.

This limited warranty shall not extend to anyone other than the original purchaser or to the person for whom it was purchased as a gift.

**HOW STATE LAW RELATES TO THIS WARRANTY:** This limited warranty gives you specific legal rights, and you may also have other rights which vary from state to state.

**IMPORTANT:** The Warranty period stated below begins with the PROOF OF PURCHASE. Without the proof of purchase, the Warranty period begins from the date of manufacture determined by the serial number manufacturing date.

**WARRANTY PERIOD:**

The warranty period for the product shown in this manual is as follows: Steel Frame Parts: 2 Years. Tires, Wheels and Drive are normal wear parts – 90 days.