



800W ELECTRIC JACK HAMMER DEMOLITION CHISEL BIT ITEM: 61110



OWNER'S MANUAL AND SAFETY INSTRUCTIONS

SAVE THIS MANUAL: KEEP THIS MANUAL FOR SAFETY WARNINGS, PRECAUTIONS, ASSEMBLY, OPERATING, INSPECTION, MAINTENANCE AND CLEANING PROCEDURES. WRITE THE PRODUCT'S SERIAL NUMBER ON THE BACK OF THE MANUAL NEAR THE ASSEMBLY DIAGRAM (OR MONTH AND YEAR OF PURCHASE IF PRODUCT HAS NO NUMBER)

FOR QUESTIONS PLEASE CALL OUR CUSTOMER SUPPORT: (909) 628 4900 MON-FRI 9AM TO 3PM PST

IMPORTANT SAFETY INFORMATION



GENERAL SAFETY WARNINGS

Read all safety warnings and instructions. Failure to follow the warnings and instructions may result in electric shock, fire and/or serious injury. Save all warnings and instructions for future reference.

SAFETY

The warnings, precautions, and instructions discussed in this instruction manual cannot cover all possible conditions and situations that may occur. It must be understood by the operator that common sense and caution are factors which cannot be built into this product, but must be supplied by the operator. Read carefully and understand all ASSEMBLY AND OPERATION INSTRUCTIONS before operating. Failure to follow the safety rules and other basic safety precautions may result in serious personal injury.

- **Read and understand all instructions.** Failure to follow all instructions may result in serious injury or property damage.
- **DO NOT** allow persons to operate or assemble the product until they have read this manual and have developed a thorough understanding of how it works.
- **DO NOT modify this product in any way.** Unauthorized modification may impair the function and/or safety and could affect the life of the product. There are specific applications for which the product was designed.
- **Use the right tool for the job. DO NOT** attempt to force small equipment to do the work of larger industrial equipment. There are certain applications for which this equipment was designed. This product will be safer and do a better job at the capacity for which it was intended. **DO NOT** use this equipment for a purpose for which it was not intended.
- **Keep children and bystanders away from the work area while operating the tool. DO NOT** allow children to handle the product.
- **Hazardous voltage can shock, burn, or cause death.** To reduce the risk of electric shock, **DO NOT** use an extension cord to connect unit to electric supply. Provide a properly located outlet. It is required that licensed electricians do all electrical wiring. All electrical wiring **MUST** be in conformance with applicable local and national codes and regulations. Before working on pump or motor, disconnect motor wiring.
- People with pacemakers should consult their physician(s) before use. Electromagnetic fields in close proximity to heart pacemaker could cause pacemaker interference or pacemaker failure.
- Before plugging in the tool, be certain the outlet voltage supplied is within the voltage marked on the nameplate. Do not use “AC only” rated tools with a DC power supply.
- Avoid body contact with grounded surfaces such as pipes, radiators, ranges and refrigerators. There is an increased risk of electric shock if your body is grounded. If operating the power tool in damp locations is unavoidable, a Ground Fault Circuit Interrupter must be used to supply the power to your tool. Electrician’s rubber gloves and footwear will further enhance your personal safety.
- When operating a power tool outside, use an outdoor extension cord marked “W-A” or “W.” These cords are rated for outdoor use and reduce the risk of electric shock.
- Always use both handles for maximum control over this hammer. Never attempt to operate this tool with one hand. This tool develops intense percussive forces during operation and you may lose control if attempting one hand operation.

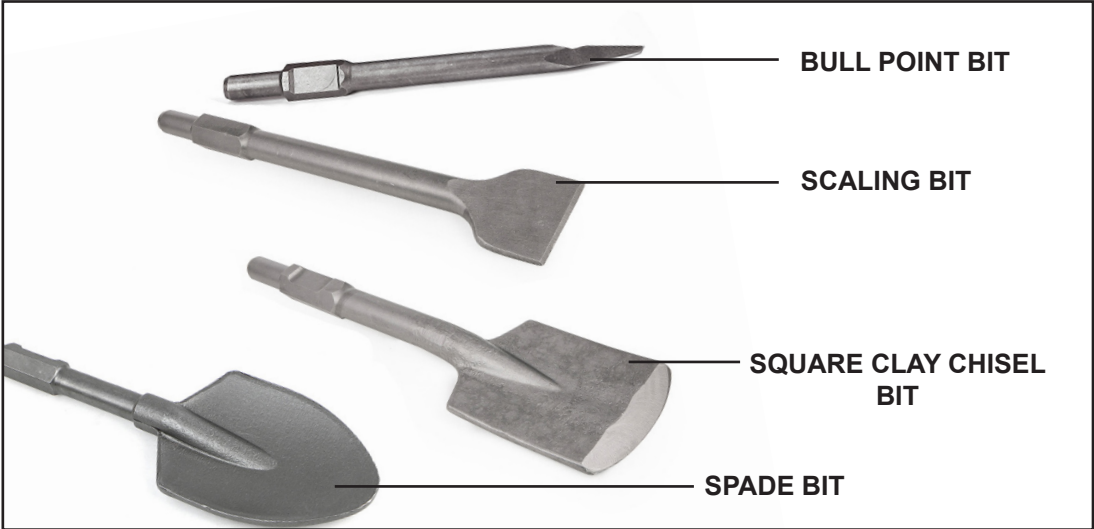
POWER TOOL USE AND CARE

- **DO NOT force the power tool.** Use the correct power tool for your application. The correct power tool will do the job better and safer at the rate for which it was designed.
- **DO NOT use the power tool if the Switch does not turn on and off.** Any power tool that cannot be controlled with the Switch is dangerous and must be repaired by a qualified technician.
- Disconnect the plug from the power source before making any adjustments, changing accessories or storing power tools.
- **Store idle power tools out of the reach of children** and do not allow persons unfamiliar with the power tool to operate the power tool.
- **Maintain power tools.** Check for misalignment or binding of moving parts, breakage of parts and any other condition that may affect the power tool's operation. If damaged, have the power tool repaired before use.
- Use the power tool, accessories and tool bits etc. in accordance with these instructions, taking into account the working conditions and the work to be performed.
- Wear ear protectors. Exposure to loud noise can cause hearing loss. Wear steel-toed boots during use.
- Use auxiliary handles supplied with the tool. Loss of control can cause personal injury.
- Hold power tools by gripping surfaces when performing an operation where the cutting tool may contact hidden wiring or its own cord. Keep clear of moving parts.
- Unplug before inspecting, removing or installing chisel or performing any service.
- Pull on chisel after installation and before use; chisel may move but **MUST NOT** slide out.
- **DO NOT operate this tool if you have back, neck, wrist injuries or other conditions** that will be aggravated by the forces that this tool exerts upon the operator.
- Avoid unintentional starting. Prepare to begin work before turning on the tool.
- **DO NOT** lay the tool down until it has come to a complete stop. Moving parts can grab the surface and pull the tool out of your control.
- When using a hand-held power tool, maintain a firm grip on the tool with both hands to resist starting
- **DO NOT** leave the tool unattended when it is plugged into an electrical outlet. Turn off the tool and unplug it from its electrical outlet before leaving.
- Use clamps or other practical way to secure and support the work-piece to a stable platform. Holding the work by hand or against your body is unstable and may lead to loss of control.
- Tool service must be performed only by qualified repair personnel. Service or maintenance performed by unqualified personnel could result in a risk of injury. For example: internal wires may be misplaced or pinched, safety guard return springs may be improperly mounted.
- When servicing a tool, use only identical replacement parts. Follow instructions in the Maintenance section of this manual. Use of unauthorized parts or failure to follow Maintenance Instructions may create a risk of electric shock or injury. Certain cleaning agents such as gasoline, carbon tetrachloride, ammonia, etc. may damage plastic parts.
- **DO NOT** use dull or damaged bits and accessories. Dull or damaged bits have a greater tendency to bind in the work-piece.

FEATURES & SPECIFICATIONS



POWER SWITCH

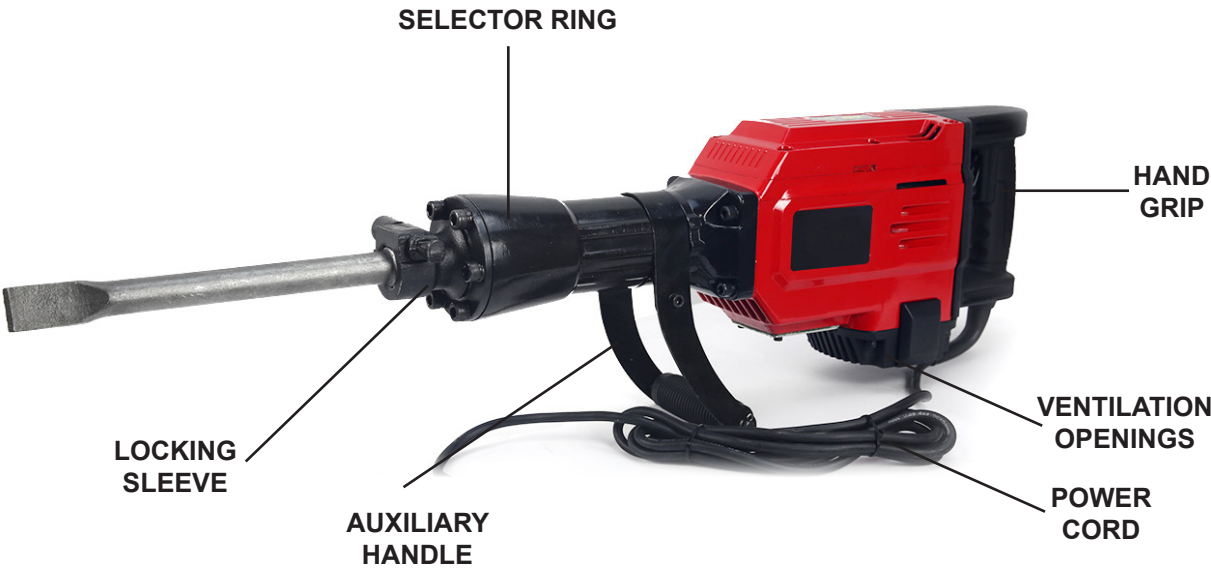


BULL POINT BIT

SCALING BIT

SQUARE CLAY CHISEL BIT

SPADE BIT



SELECTOR RING

LOCKING SLEEVE

AUXILIARY HANDLE

HAND GRIP

VENTILATION OPENINGS

POWER CORD

Assembled Product Dimensions (L x W x H) 35.00 x 14.00 x 8.00 Inches

VOLTAGE	120V
INPUT	2800W
FULL LOAD IMPACT RATE	1400R/MIN
WEIGHT (without cord)	15KG

This 2800W jack hammer is ideal for demolition, trenching, chipping, breaking holes in concrete-block-brick, removing foundation concrete slab, oil chimney and so on. It features heavy duty construction with industrial grade for high durability. It features two chisels for multiply functions. It comes along with 360 degree swivel handle with slip prevent grip for stable grips. It is suitable for home and commercial applications.

FEATURES AND SPECIFICATIONS

- 2800W input power
- Industrial Quality, Very Durable
- Heavy Duty Construction
- Voltage: 120v/60hz
- Suitable For Home And Business
- No Load Speed: 1900RPM
- Impact rate 1400 r/min
- 360 Swivel Handle
- Slip Prevent Handle Grip
- Heavy Duty Case With 2 Wheels & Handle

OPERATION

COMMON APPLICATIONS:

- Piping & wiring installation
- Sanitary facility installation
- Machinery installation
- Water supply & drainage work
- Interior work
- Civil engineering work

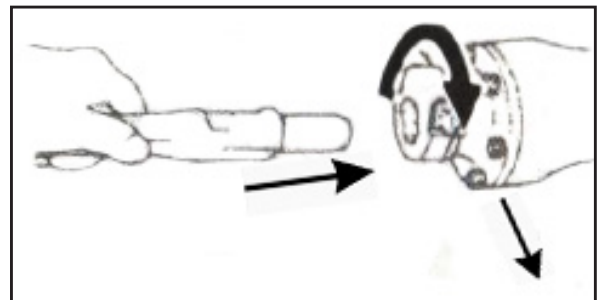
PRIOR TO OPERATION:

- 1. POWER SOURCE:** Ensure that the power source to be utilized conforms to the power specifications on the nameplate.
- 2. GROUNDING:** This tool should be grounded while in use to protect the operator from electric shock. This tool is equipped with a three conductor cord and grounding type plug to fit the proper grounding receptacle. The green (or green and yellow) conductor in the cord is the grounding wire. Never connect the green (or green and yellow) wire to a live terminal.
- 3. POWER SWITCH:** Make sure the power switch is in the OFF position. If the plug is connected to a power receptacle while the power switch is in the ON position. Make sure you are ready to start work before starting the tool. Failure to do so may cause serious injury.
- 4. EXTENSION CORD: ALWAYS** use an extension cord of sufficient thickness and rated capacity. The extension cord should be kept as short as is practical.
- 5. FEEDING OIL:** Prior to using the power tool. Remove the oil gauge and fill the oil tank with the provided oil. Although the oil tank is built in, it contains only a small amount of oil when shipped from the factory.

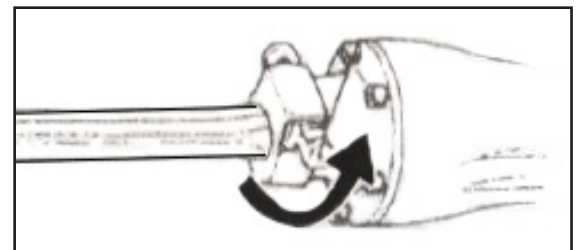
COMMON APPLICATIONS:

MOUNTING A TOOL:

- (A) Rotate the Stop Lever 180-degrees in a clockwise direction while pulling it towards you. Next, insert the tool shank into the hexagonal hole on the front cover.
- (B) Clamp the tool by turning the stop lever half a turn in the opposite direction. **NOTE:** When removing the tool, follow the above procedure in reverse order.



USING THE HAMMER: After placing the tip of the tool in the base, hold the switch ON. By utilizing the weight of the machine and firmly holding the hammer with both hands, one can effectively control the recoil motion. Proceed at a moderate work rate. The use off too much force will impair efficiency.



CAUTION: Sometimes the tool will not begin the striking stroke even when the motor rotates because the oil has become too thick. If the tool is used at low temperatures, or if it is used after an extended idle time, the tool should be used after running it for five minutes to warm it up.

MAINTENANCE AND INSPECTION

OIL FEEDING: Prior to oil feeding, ALWAYS disconnect the plug from the power receptacle. Since the oil chamber is built into the tool, it can be used approximately 20 days at 3-4 hours a day, without supplying lubricating oil.

Just before there is no oil visible in the oil gauge window when holding the hammer upright use the provided wrench to remove the oil gauge. Be careful not to lose the rubber backing attached below the oil gauge. Fill the chamber with oil.

Check the oil level daily, confirming the oil level is full. After feeding oil be sure to securely clamp the oil gauge.

INSPECTING THE TOOL: Using a dull or worn tool can cause motor malfunctions and degraded efficiency. Replace with a new tool when wear is noted.

Inspecting the Mounting Screws: Regularly inspect all mounting screws and ensure they are sufficiently tightened. Should any of the screws be loose. Re-tighten immediately before use.

Maintenance of the Motor: The motor unit Winding is essential to the power tool. Ensure the Winding does not become damaged or wet with oil or water.

Inspecting the Carbon Brushes: The motor employs carbon brushes which are consumable parts. When they become worn, or near to wear limit, it can result in motor malfunction when the "Auto-Stop" carbon brush is equipped, the motor will stop automatically. At that time, replace both carbon brushes with new ones. Always keep brushes clean and ensure they slide freely within the brush holders. The carbon brush can be removed by removing the cap cover. Cap rubber and brush cap in the order at the interior.

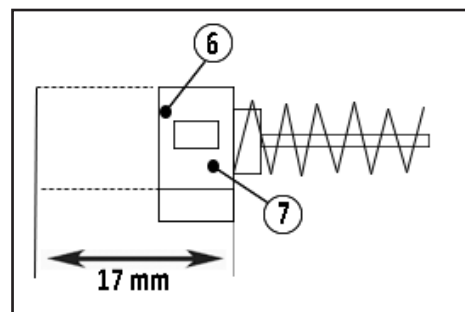
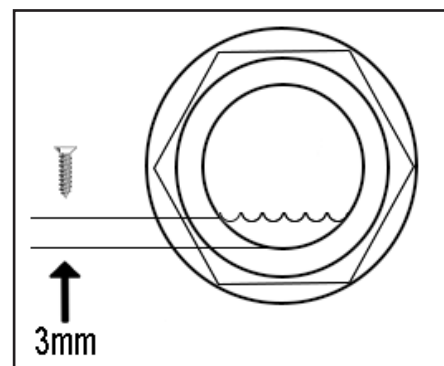
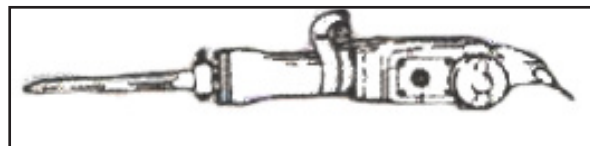
Lubrication: Your tool comes has been properly lubricated and ready for use. It is recommended that tools with gears be re-greased with a gear lubricant at every brush change.

Bearings: Every second brush change, the bearings should be replaced by a qualified technician. Bearings that become noisy, due to heavy load or very abrasive material cutting, should be replaced immediately to avoid overheating or motor failure.

Cleaning: Disconnect the tool from power source prior to maintenance or cleaning of the power tool. The tool may be cleaned most effectively with compressed dry air. Ventilation openings and switch levers must be kept clean and free of foreign matter. Do not attempt to clean by inserting pointed objects through openings.

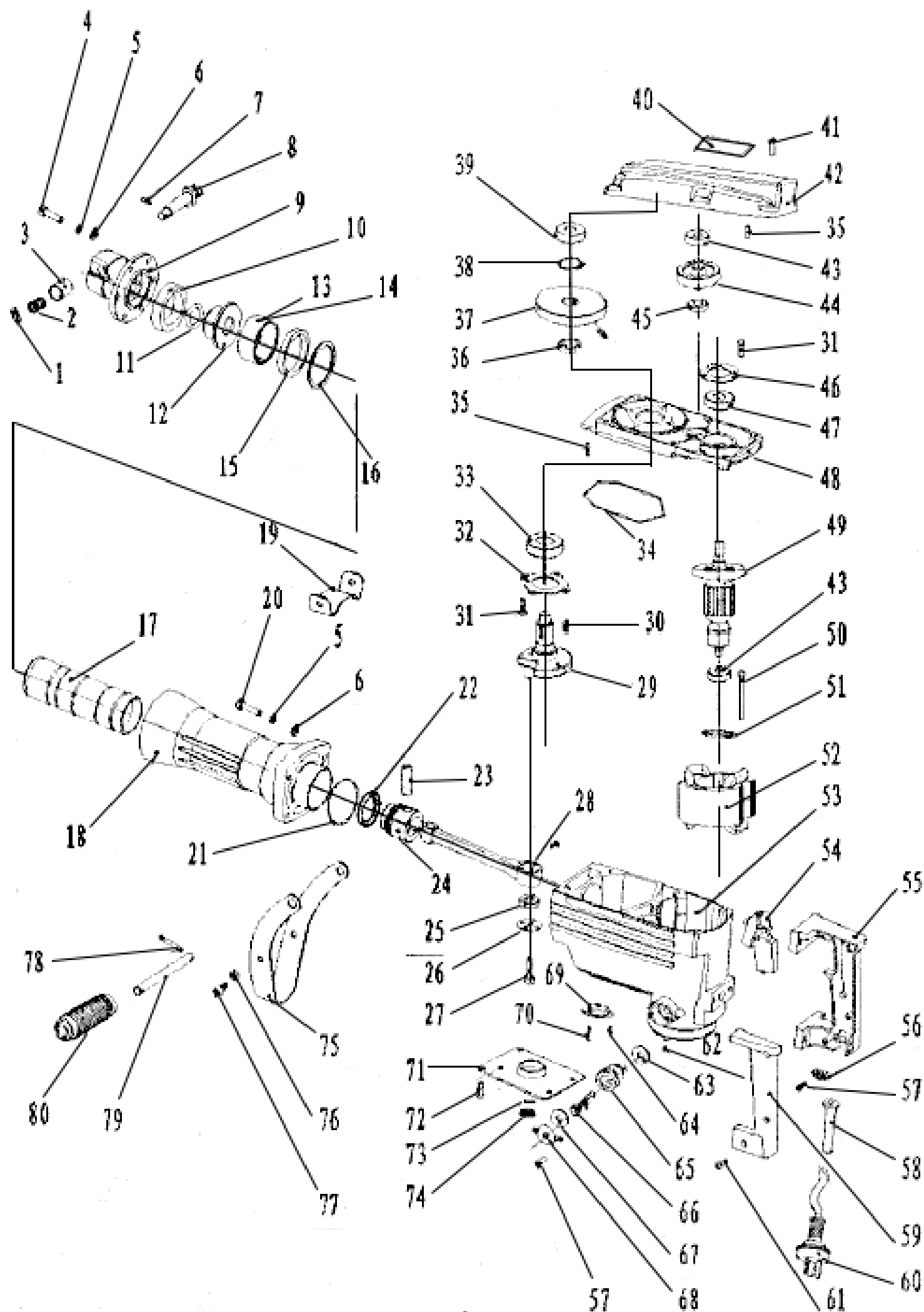
Certain cleaning agents and solvents damage plastic parts. Some of these are gasoline, carbon tetrachloride, chlorinated cleaning solvents, ammonia and household detergents that contain ammonia.

NOTE: Due to continuing program research and development, the specifications herein are subject to change without prior notice.



	6	a
8	44	6
9	43 Z	7

PARTS LIST



PARTS LIST

#	DESCRIPTION	QTY	#	DESCRIPTION	QTY
1	TOOL HOLDER	1	50	REAR COVER	1
2	TOOL RETAINER	1	51	HEX SOCKET HEAD BOLT M5X12	2
3	HEX SOCKET HEAD BOLT M8X30	6	52	HEX SOCKET HEAD BOLT M10X40	1
4	COMPRESSION SPRING 17	1	53	CRANK SLEEVE	1
5	RETAINER SLEEVE	1	54	NEEDLE ROLLER BEARING 1820	1
6	URETHANE RING 49	1	56	CRANK SHAFT	1
7	O-RING 24	1	57	HEX SOCKET HEAD BOLT M5X18	4
8	SEAL HOLDER	1	58	BEARING RETAINER 65	1
9	IDLER	1	59	WOODRUFF KEY 4	2
10	RUBBER SLEEVE 64	1	60	MOTOR HOUSING COMPLETE	1
11	FLAT WASHER 58	1	60	BRUSH HOLDER	2
12	URETHANE RING 59	1	61	HM1306 NAME PLATE	1
13	CONNECTING ROD	1	62	SEAL RING A	1
14	PISTON	1	63	BALL BEARING 6205LLU	1
15	PIN 12	1	64	RING 25	1
16	Y RING 34	1	65	BALL BEARING 6203LLU	1
17	HAMMER	1	67	BEARING RETAINER 48	1
18	O-RING 65	1	68	TAPPING SCREW 4X18	3
19	BARREL	1	69	HEX SOCKET HEAD BOLT M5X18	3
20	HEX SOCKET HEAD BOLT M8X35	4	70	PAPER WASHER	2
21	GRIP 37	1	71	GEAR HOUSING	1
22	HEX NUT M8-13	1	72	SEAL RING B	1
23	HEX NUT M8-13	2	73	HELICAL GEAR 65	1
24	HANDLE CLAMP	1	74	BALL BEARING 6302LLB	1
25	SIDE HANDLE	1	75	GEAR HOUSING COVER	1
26	HEX SOCKET HEAD BOLT M8X20	2	76	HEX SOCKET HEAD BOLT M6X50	4
27	HEX NUT M8-13	1	77	BALL BEARING 6201ZZ	1
28	RING 17	1	78	HELICAL GEAR 37 COMPLETE	1
29	RING SPRING 15	1	79	BALL BEARING 6201ZZ	1
30	FAN 80	1	80	PIN 6	1
31	ARMATURE ASSEMBLY 220V	1	81	HEX SOCKET HEAD BOLT M6X50	2
32	FLAT WASHER 12	1	82	FLAT WASHER 6	2
33	BALL BEARING 6201LLB	1	83	LOCK BUTTON	1
34	BAFFLE PLATE	1	84	SWITCH LEVER	1
35	HEX BOLT M5X60	2	85	LOCK PLATE	1
36	FIELD ASSY 220V	1	86	SWITCH TG71B	1
36	RING TERMINAL	2	87	SWITCH BOX	1
36	CONNECTOR P2	2	88	COMPRESSION SPRING 3	1
36	VARNISHED POLYESTER TUBE	2	89	HANDLE SET	1
37	PIN 6	1	90	PAN HEAD SCREW	1
38	HOLDER SEAL	1	93	TAPPING SCREW 4X18	2
39	FELT COMPLETE	1	94	STRAIN RELIEF	1
40	HEX SOCKET HEAD BOLT M4X12	4	96	CORD GUARD 10	1
41	SEAL RING C	1	97	POWER SUPPLY CORD 1.0-3-5.0	1
42	OIL TANK COVER COMPLETE	1	98	HEX SOCKET HEAD BOLT M6X30	2
43	HEX SOCKET HEAD BOLT M5X12	4	99	FLAT WASHER 6	2
44	OIL GAUGE	1	100	VARNISHED POLYESTER TUBE 8-40	1
45	HEX SOCKET HEAD BOLT M4X10	4	101	O-RING 16	1
46	HOLDER CAP PLATE	2	A01	OIL SUPPLY 100C	1
47	CAP RUBBER	2	A02	WRENCH 23	1
48	BRUSH HOLDER CAP 7-18	2	A03	BULL POINT 30-410	1
49	A.C. CARBON BRUSH CB-204	1	A04	STEEL CARRYING CASE SET	1

PLEASE READ THE FOLLOWING CAREFULLY

THE MANUFACTURER AND/OR DISTRIBUTOR HAS PROVIDED THE PARTS LIST AND ASSEMBLY DIAGRAM IN THIS MANUAL AS A REFERENCE TOOL ONLY. NEITHER THE MANUFACTURER OR DISTRIBUTOR MAKES ANY REPRESENTATION OR WARRANTY OF ANY KIND TO THE BUYER THAT HE OR SHE IS QUALIFIED TO MAKE ANY REPAIRS TO THE PRODUCT, OR THAT HE OR SHE IS QUALIFIED TO REPLACE ANY PARTS OF THE PRODUCT. IN FACT, THE MANUFACTURER AND/OR DISTRIBUTOR EXPRESSLY STATES THAT ALL REPAIRS AND PARTS REPLACEMENTS SHOULD BE UNDERTAKEN BY CERTIFIED AND LICENSED TECHNICIANS, AND NOT BY THE BUYER. THE BUYER ASSUMES ALL RISK AND LIABILITY ARISING OUT OF HIS OR HER REPAIRS TO THE ORIGINAL PRODUCT OR REPLACEMENT PARTS THERETO, OR ARISING OUT OF HIS OR HER INSTALLATION OF REPLACEMENT PARTS THERETO.

Record Product's Serial Number Here: _____

Note: If product has no serial number, record month and year of purchase instead.

Note: Some parts are listed and shown for illustration purposes only and are not available individually as replacement parts.



SAVE THESE INSTRUCTIONS.



Questions, problems, missing parts?

Before returning to your retailer, our exceptional customer service is available.

Call us Tel: 909 628 4900

Hour : 9am To 3pm PST (Monday to Friday)

Email : info@starktoolsusa.com