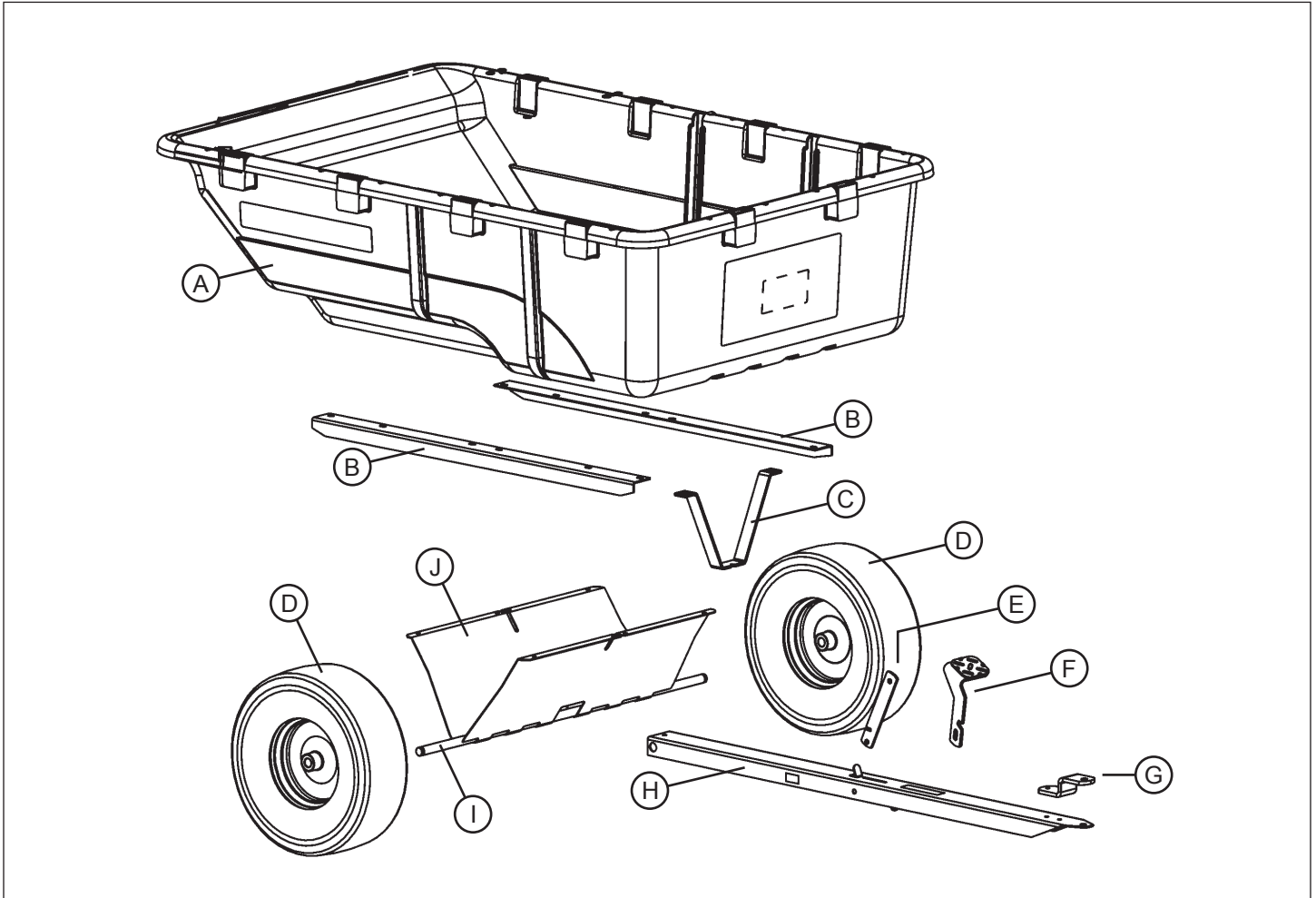


Assembly

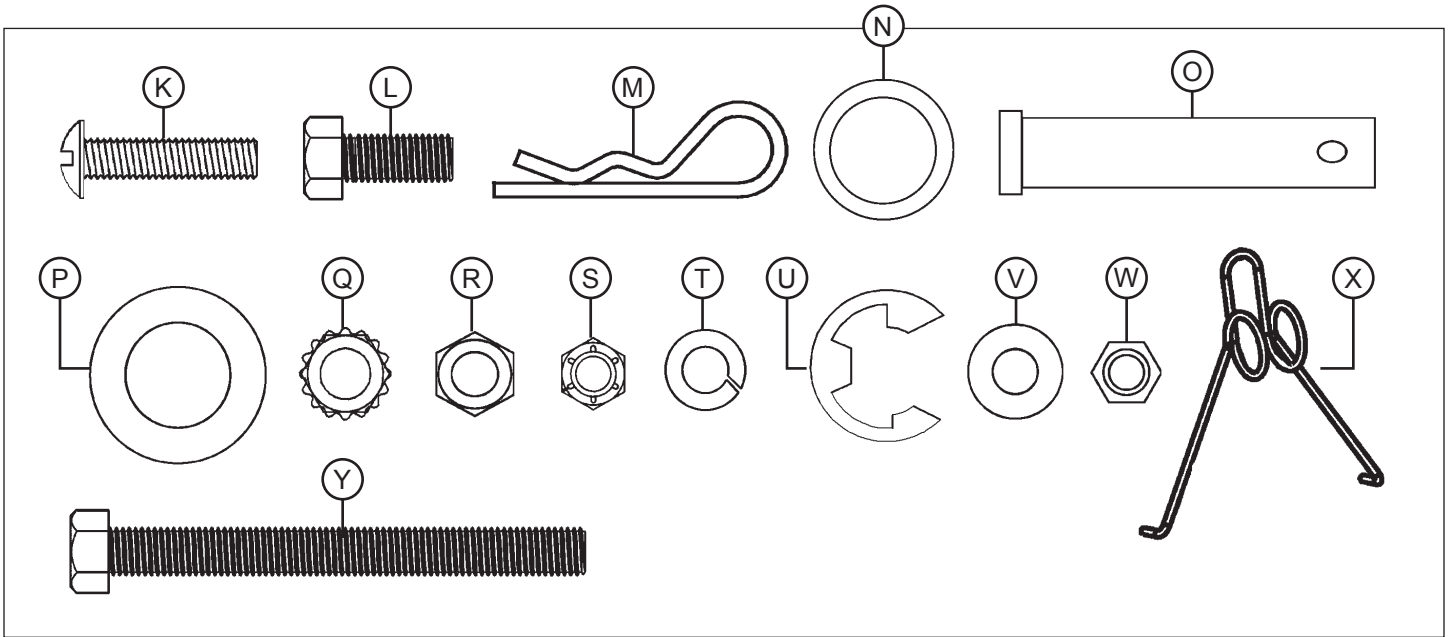
Parts in Kit



Description	Qty.	Description	Qty.
A. Cart	1	F. Pedal (If Equipped)	1
B. Support, Longitudinal	2	G. Clevis	1
C. Lock Bracket	1	H. Drawbar	1
D. Wheel	2	I. Axle	1
E. Lock Bar (If Equipped)	1	J. Axle Support	1

Assembly

Parts in Kit



Description

Qty.

Tools Required for Assembly:

K. Slotted Head Screw 5/16 x 1-1/4 in.	12
L. Bolt, 5/16 x 3/4 in.	2
M. Spring Locking Pin, 1/8 in.	1
N. Spacer, Wheel	2
O. Clevis Pin, 1/2 x 2-1/2 in.	1
P. Bushing, 3/4 in.	6
Q. Nut, w/Star Washer, 3/8 in.	2
R. Locknut, 3/8 in.	1
S. Locknut, 5/16 in.	2
T. Lockwasher, 5/16 in.	12
U. Retaining Ring, 3/4 in.	2
V. Washer, Flat, 5/16 in.	24
W. Nut, 5/16 in.	12
X. Spring, Latch	1
Y. Bolt, 3/8 x 3-3/4 in.	1

- 1/2 in. wrench (2)
- 9/16 in. wrench (2)
- Pliers
- Flat blade screwdriver

Assemble Cart

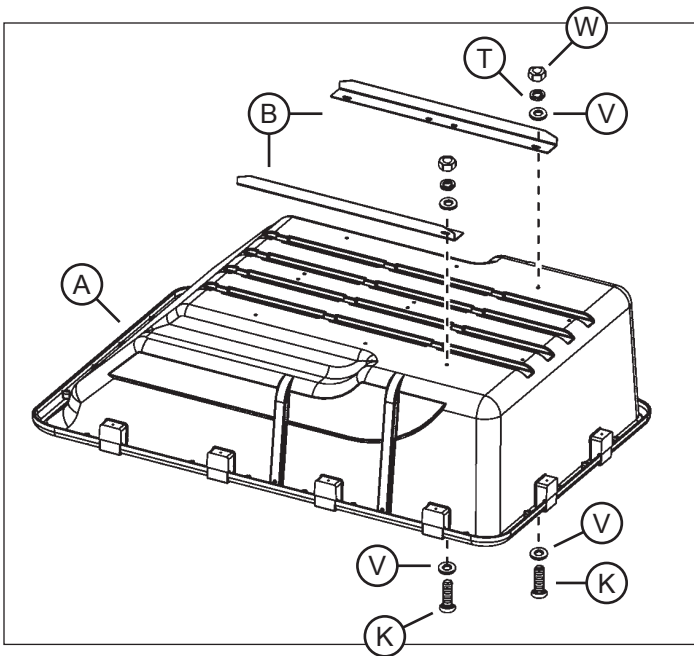
When assembling cart, do the following:

- Do not discard cardboard bed divider, it can be used as a template for making dividers for the cart.
- Place pieces of carton under cart box to help avoid scratching finish.
- Put all bolt heads to the inside of the cart box.

Assembly

Assembly Step 1

Install Supports



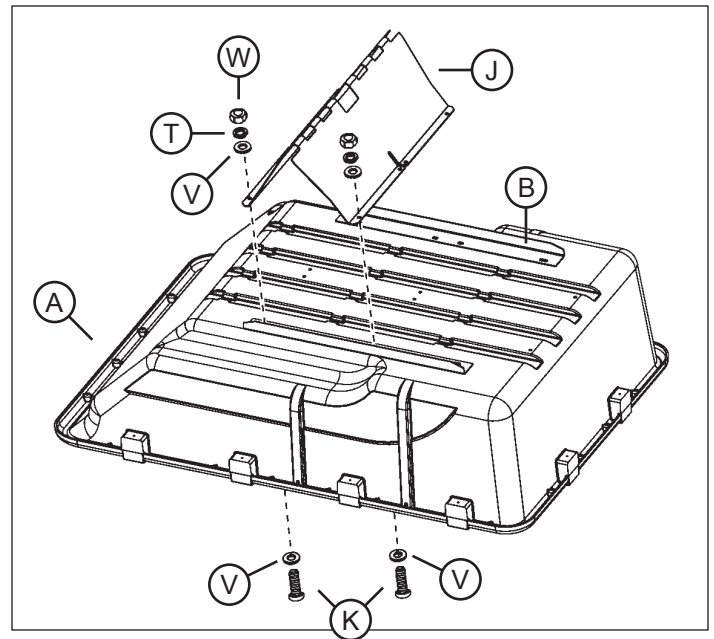
MX41739

1. Place the longitudinal supports (B) over the bottom of the cart (A).
2. Secure supports with two 5/16 x 1-1/4 in. slotted head screws (K), four 5/16 in. flat washers (V), two 5/16 in. lock washers (T), and two 5/16 in. nuts (W). Assemble hardware finger tight until both screws are installed.

Do **not** tighten nuts at this time.

Assembly Step 2

Install Axle Support



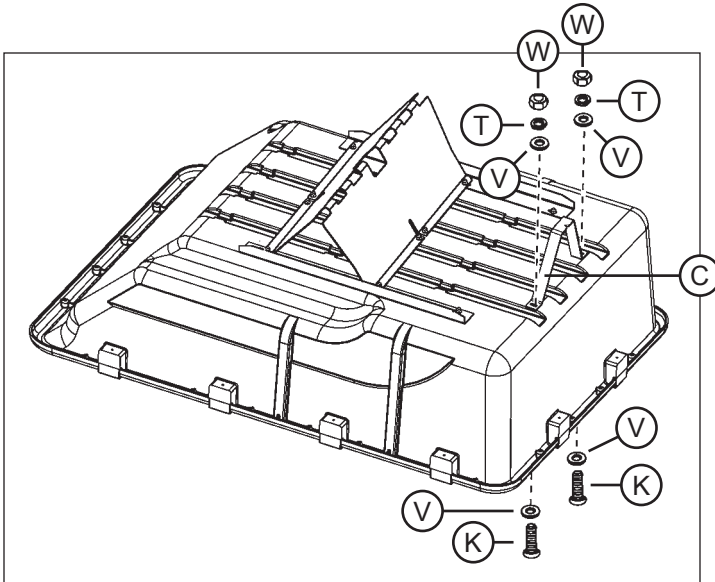
MX41738

1. Place axle support (J) onto slotted holes in longitudinal supports (B) on bottom of cart (A).
2. Install eight 5/16 x 1-1/4 in. slotted head screws (K) and eight 5/16 in. flat washers (V), from inside cart box through axle support. Place eight additional 5/16 in. flat washers (V), eight 5/16 in. lockwashers (T) and eight 5/16 in. nuts (W) on screws. Assemble hardware finger tight until all eight screws are installed.
3. **Tighten all fasteners for longitudinal supports (B) and axle support (J).**

Assembly

Assembly Step 3

Install Lock Bracket



MX41737

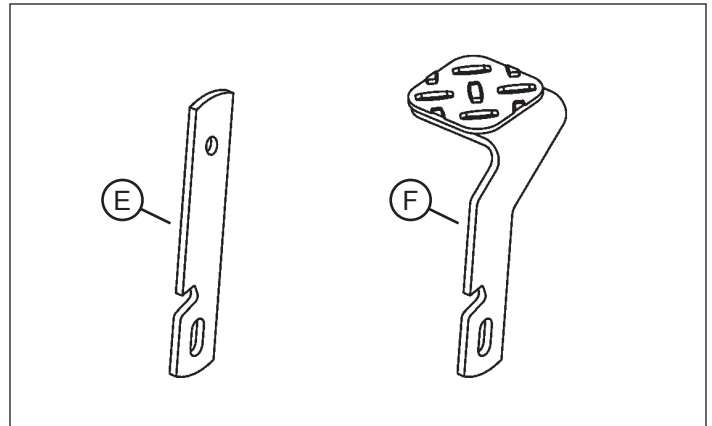
NOTE: Make sure notch on lock bracket is facing to the front of the cart.

1. Place lock bracket (C) the cart.
2. Install two 5/16 x 1-1/4 in. slotted head screws (K) and two 5/16 in. flat washers (V) through cart box (from inside cart box) and lock bracket.
NOTE: Lock bracket has slots in it to adjust forward or backward.
3. Secure with two additional 5/16 in. flat washers (V), two 5/16 in. lockwashers (T) and two 5/16 in. nuts (W).

Tighten securely.

Assembly Step 4

Identify and Assemble Lock Bar / Foot Pedal



MX52264

1. Determine whether your cart includes a lock bar (E) or a foot pedal (F). See Assemble Cart Lock Bar or Assemble Cart Foot Pedal below for installation steps.