

IAPMO RESEARCH AND TESTING, INC.

500 East Philadelphia Street, Ontario, Canada N9T 1B1 • USA 909-472-4100/909-472-4244 www.iapmo.org



CERTIFICATE OF LISTING

IAPMO Research and Testing, Inc. is a product certification body which tests and inspects samples taken from the supplier's stock or from the market or a combination of both to verify compliance to the requirements of applicable codes and standards. This activity is coupled with periodic surveillance of the supplier's factory and warehouses as well as the assessment of the supplier's Quality Assurance System. This listing is subject to the conditions set forth in the characteristics below and is not to be construed as any recommendation, assurance or guarantee by IAPMO Research and Testing, Inc. of the product acceptance by Authorities Having Jurisdiction.

The most updated information on this Certificate of Listing is available online at pld.iapmo.org

Effective Date: March 2018 -Rev. 3/7/2018- Void After: March 2019

Product: Plumbing Fixture Fittings-Components File No. MC-8435

Issued To: Hain Yo Enterprises Co, Ltd
No. 102, Tien Tung Rd., Ho-mei
Gravity, IA 50848

Identification: Each fitting component shall bear permanent legible markings to identify the manufacturer. This marking shall be the trade name, trademark, or other mark known to identify the manufacturer. The product shall also bear all other markings required by the standard. The marking shall be applied so as to be visible after installation. The product or packaging shall also bear the cUPC® certification mark along with the term "COMPONENT" above

Characteristics: plumbing fixture fitting components to be installed in accordance with the manufacturers instructions and the requirements of the latest edition of the Uniform Plumbing Code

Products listed on this certificate have been tested by an IAPMO R&T recognized laboratory. This recognition has been granted based upon the laboratory's compliance to the applicable requirements of ISO/IEC 17025

Products are in compliance with the following standard(s):
ASME A112.18.1-2012/CSA B125.1-12

Tim Collins
Chairman, Product Certification Committee

Ron Cherry
CEO, The IAPMO Group



This listing period is based upon the last date of the month indicated on the Effective Date and Void After Date shown above. Any change in material, manufacturing process, marking or design without having first obtained the approval of the Product Certification Committee, or any evidence of non-compliance with applicable codes and standards or of inferior workmanship may be deemed sufficient cause for revocation of this listing. Production of or reference to this form for advertising purposes may be made only by specific written permission of IAPMO Research and Testing, Inc. Any alteration of this certificate may be grounds for revocation of the listing. This document shall be reproduced in its entirety.

IAPMO RESEARCH AND TESTING, INC. CERTIFICATE OF LISTING



-Rev.3/7/2018-

Void After: March 2019

Product: Plumbing Fixture Fittings-components

File No. MC-8435

Issued To: Hain Yo Enterprises Co, Ltd

MODELS :

Pressure Balance Valve for Bath/Shower Faucets:

40mm : JH01GJ(HK-40), JL01GJ(HI-40), JH02BJ(HL-40), JL02BJ, JH02BD, JH04BD
EH12TD Single Handle PRESsure Balancing Tub & Shower Set
JH04BD Pressure balancing valve

Diverter for Bath/Shower Faucets:

35mm : KL18GJ
35mm : FL15GJ

Mixer + Diverter Cartridge for Bath/Shower Faucets:

40mm : DH19GJ, DL19GJ

Ceramic Cartridge for Faucets:

25mm : GL02GJ, GH02GJ, GL12TD
35mm : FH02BD, FH02GJ, FH02BD, FL02GJ, FH02GJ, FH12TD, FL19GJ, FH16GJ, FH17GJ, FL12TD
40mm : DH02BD, DH02GJ, DL02BD, DH17GJ, DH12TD, DL02GJ, DH16GJ



About us

We have been devoting into hand showers for many years and is renowned and professional bathroom accessories and kitchen accessories manufacturer in a global spectrum; mostly of the production equipment are imported from Germany, Italy and other countries. In order to ensure the product's quality meets European safety standards, our product is produced by the highest quality Brass material without any impurities of anything that is harmful to the health; by using the best manufacturing technology available, we can guarantee reliability for any designs. "competition and initiative, quality first, customers supreme and maintenance if prestige" is embather's mission. Our company began to adopt strict quality management, from the producing of the first product. We adopted ISO9001 and ISO14000 quality system enhance the management standard

We advance surface chroming procedures includes: process through layers or purple brass +Nickel+ Chrome to insure the final finish will stay new after many years of use

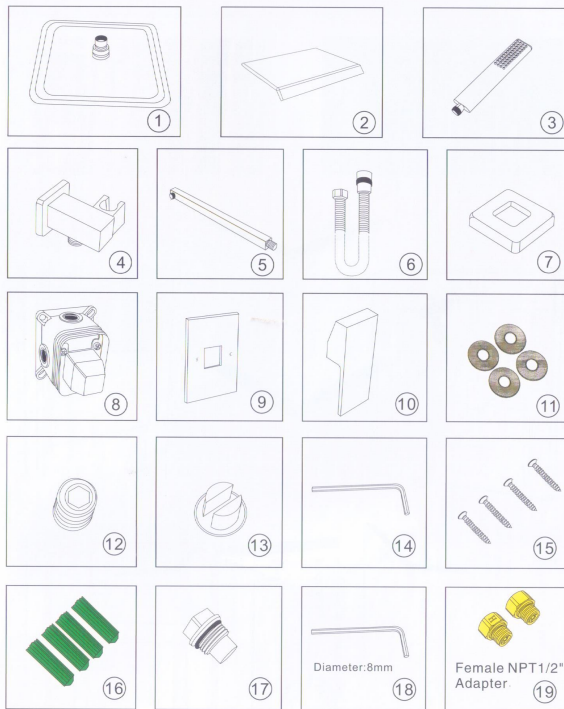
We have a proficient technical team and advanced facility, specializing in sanitary wares production from design Early on the established, we have determined that our goal is not only the our manufacture, but more important characteristic is our Design.

Our Design Team believe, the good design is drawn from life, also it can stand the test of time, naturally ,the humanization origin and durable products is what we are moving direction.

Our Life Guarantee----30-day money back guarantee for any reason, for 30 days after the date of purchase, return your undamaged our product and receive a full refund for Any reason

Our products come with Hassle-free Lifetime Warranty backed by our unprecedented 24-hour part replacement policy. Our dedicated shower experts sent an email or a phone call away to assist you

Essential accessories list



WARNING: Keep all small parts and plastic bags out of the reach of children.

1. Before you start, prepare the wall for installation

(The depth is for reference only; please according to the actual thickness of tiles to decide the installation depth)

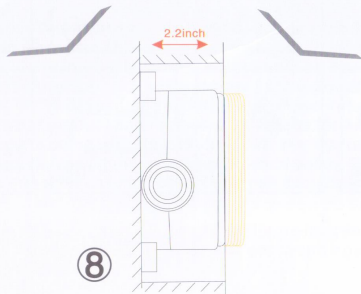
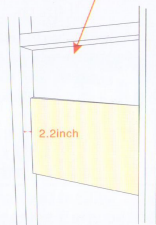
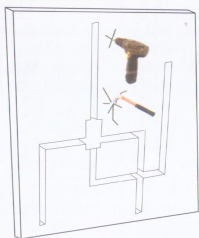


(Concrete wall)

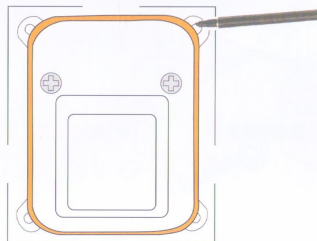
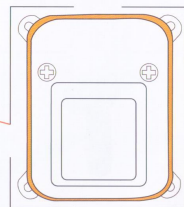
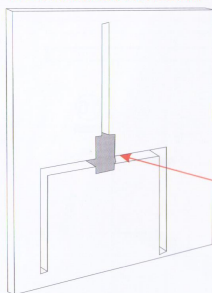


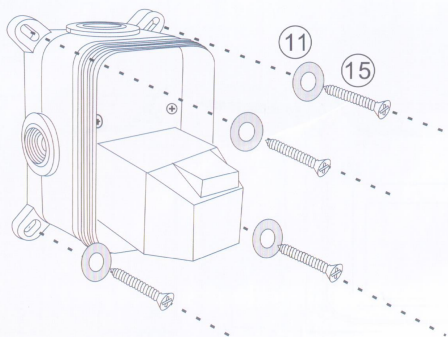
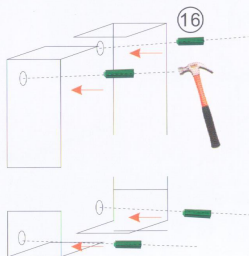
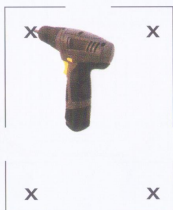
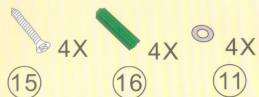
(Wood wall)

A: Wall Mounted Installation

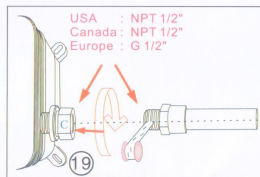
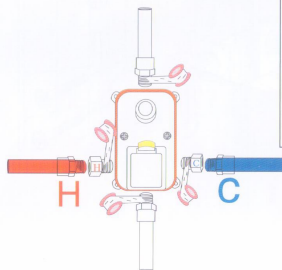


A: Wall Mounted Installation





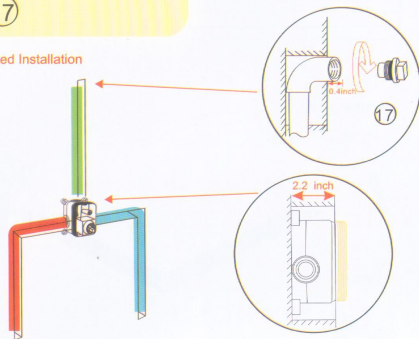
2. Clean the insides of all water pipes and fittings of dirt and other impurities



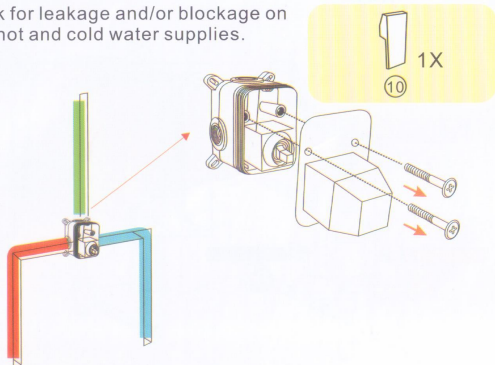


17

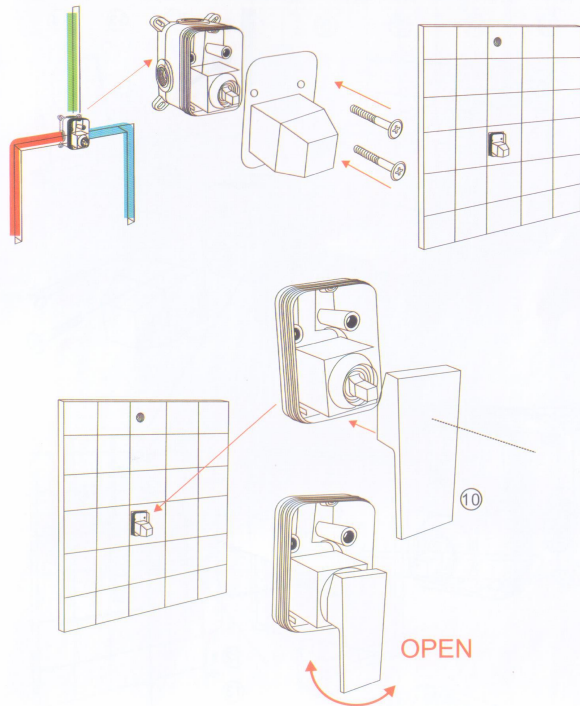
A: Wall Mounted Installation

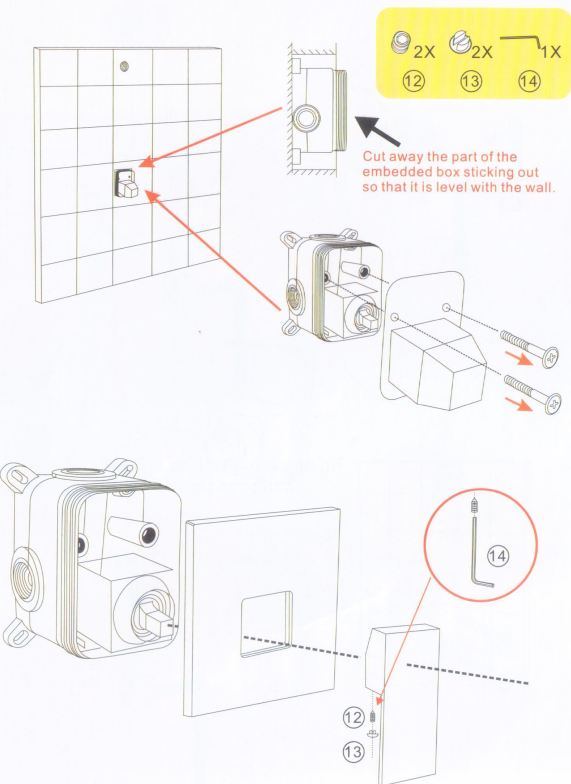


Check for leakage and/or blockage on both hot and cold water supplies.

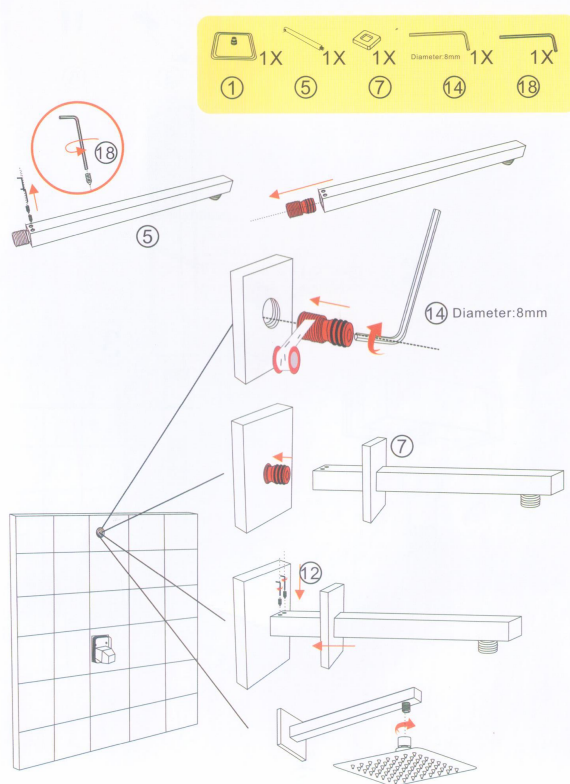


4. Tiles



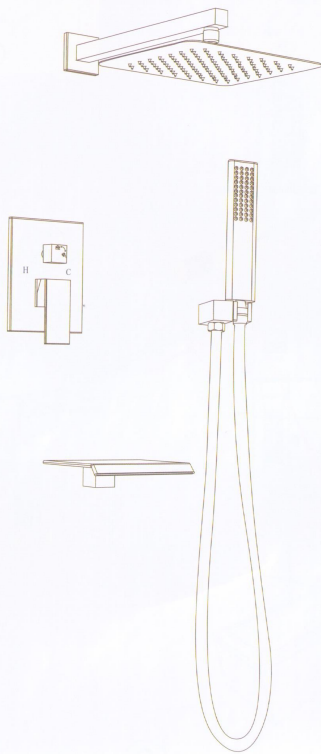


7A. Install Shower Arm and Rain Shower Head



12





Three :About Warranty

3.1.Information

Customer	
Purchase product	
Purchase date	
Warranty Duration	Warranty durationLIFETIME GUARANTEE(NO-Artificial Damage)

3.2. Warranty

3.2.1. This warranty applies to our products manufactured and sold

3.2.2. Consumers in the use of products, please read the "product manual."

The company provides the following limited warranty for users who purchase our products:

At any time during the warranty period of your purchase of our products if the product is damaged due to poor use of materials and workmanship the company will repair or replace the same type of product.

3.2.3. The warranty period

our product design, production through quality standards certification, such as the use of properly, and according to our maintenance instructions for processing, product performance and reliable. All products will provide lifetime warranty service.

If it is found that our defective product is defective, we will choose to repair or update the product.

3.2.4. If any of the following occurs, consumers will not be able to enjoy the warranty service (that is, the warranty does not apply):

- (1) Damage to products caused by improper use, care or repair using not our production (whether by mistake, by contractor, by the trade, or by the user's family)
- (2) The Company is not responsible for the cost of engaging maintenance personnel, and for any damage resulting from the installation, repair or replacement of parts, and consequently the resulting damage
- (3) The lack of water pressure, excessive water impurities and improper use and cleaning caused by the problem will not be covered. The warranty does not cover the cost of repair and parts not listed, nor does it include installation costs.
- (4) Normal wear and tear caused by changes in the water. Loss of normal care-such as regular care need to regularly replace the washers, seals and so on

3.2.5. During the warranty period, we provide services based on the severity of the product's defect or the seriousness of the quality problem.

3.2.6. The warranty period, the product quality problems, the consumer should take the following measures:

- (1) Timely contact with the customer, we will answer for you within 24 hours.