



ERIS ALUMINUM BIFOLD DOOR INSTALLATION GUIDE

INSTALLATION KIT CONTENTS:



BOTTOM WHEEL & TOP
GUIDE



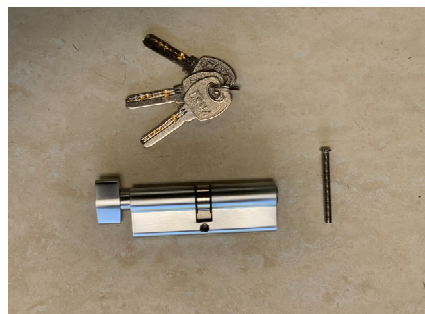
MAGNET DOOR HOLDER



HANDLE SET



FRAME



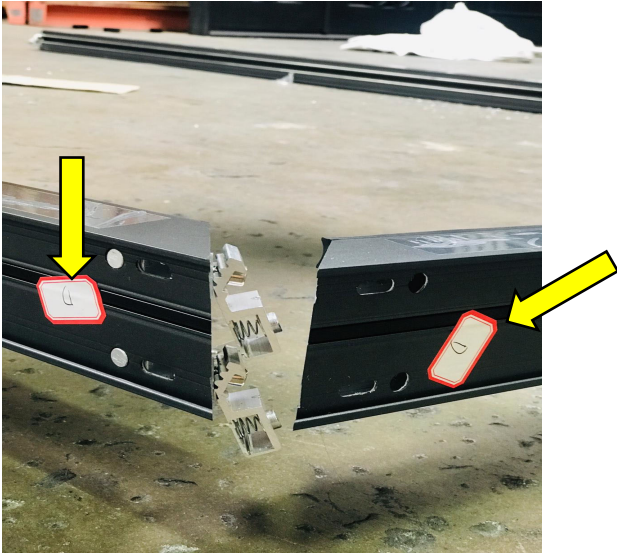
LOCK KNOB



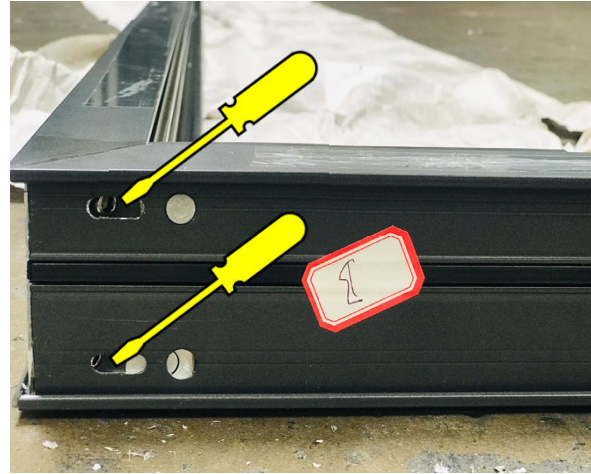
SMALL HANDLE

Frame Assembly

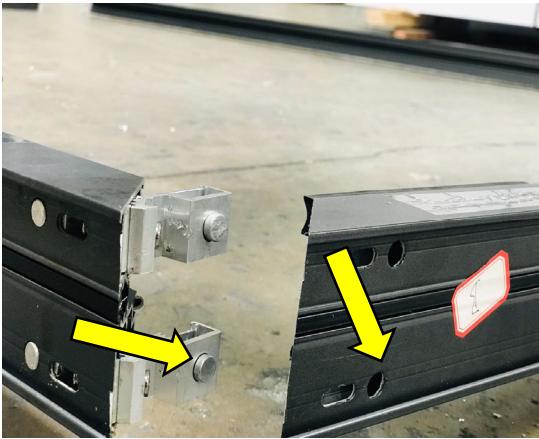
1. Find the correct frame pieces.
Matching each letter to corresponding one:



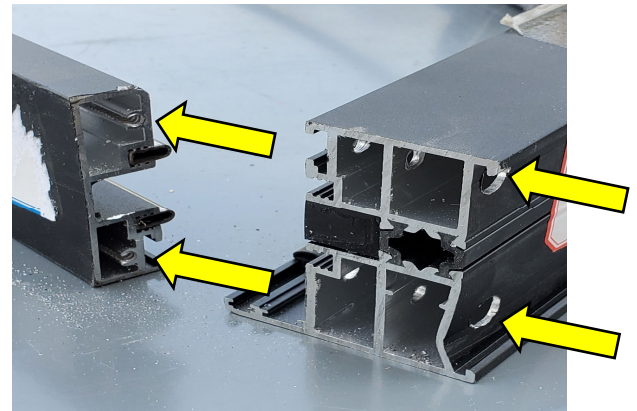
3. Tighten the brackets screws equally until there is no gap between frames.



2. Insert the brackets into the frame and make sure the pin gets into the hole.



4. For low bottom track, use the longer screws that came with frame and screw from behind the side pieces into the bottom track.



Once frame is assembled, place it by the installation location and check the opening size and Floor level

- Recommended opening size is overall frame size +1/2" .
- Check the door's spec sheet to make sure frame is facing the correct way.
- For outswing door, hinge holes will be toward outside of your building and wider side of frame will be toward inside.
- For Inswing door, hinge holes will be toward inside of your building and wider side of frame will be toward outside.
- Drain holes in bottom track should always face outside.



Frame Installation

1. Apply the Liquid Nail under the track and place the frame in the opening.

- Only Liquid Nail is recommended for bottom track for better waterproofing unless floor is not level and you will need to anchor the track to the floor.

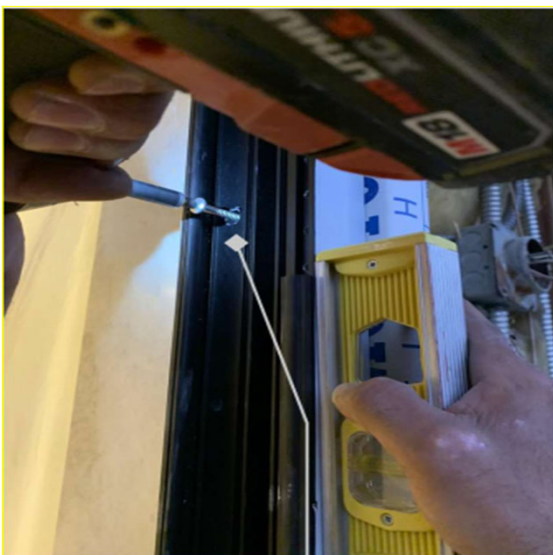


2. Drill 7/16 hole into first layer of Side frames for cap and 1/4" hole on the other layers.

- Side needs 4-5 Screws (6" from bottom , 6" from top and other screws spaced equally along the frame).
- Top track needs 2-3 screws spaced equally along the top piece.



3. Make sure frame is level.
Screw the frame to the opening.



4. Cover hole with plastic cap.



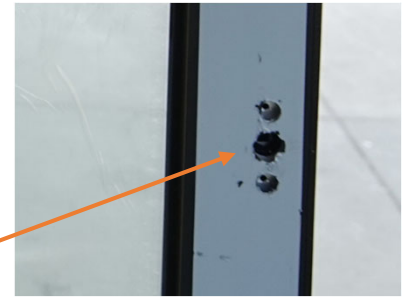
Door Panels Installation

1. Find and install the first folding panel.

- Usually, panels have labels and panel #1 is the first panel.
- If the label is missing the one with 3 small holes on one side is the first panel
- Use the 1" screws for hinges attaching to the frame.

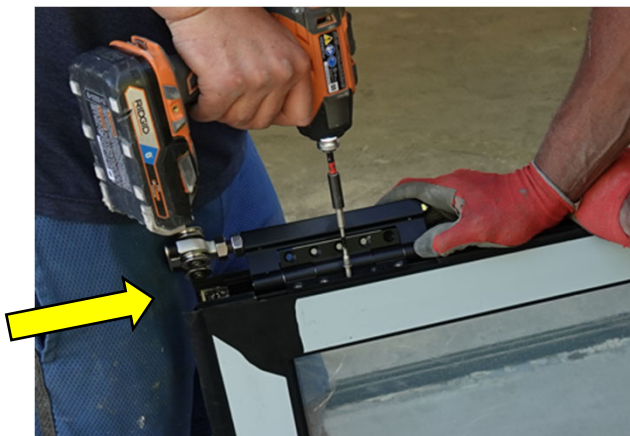


When the door is closed holes in picture below must be inside.



2. Install bottom wheel and top guide to second panel.

- If the label is missing the panel that has D shape handle on it is the second panel.
- Use the 2" screws for attaching wheel and guide to the door panels.



Bottom Wheel



Top guide



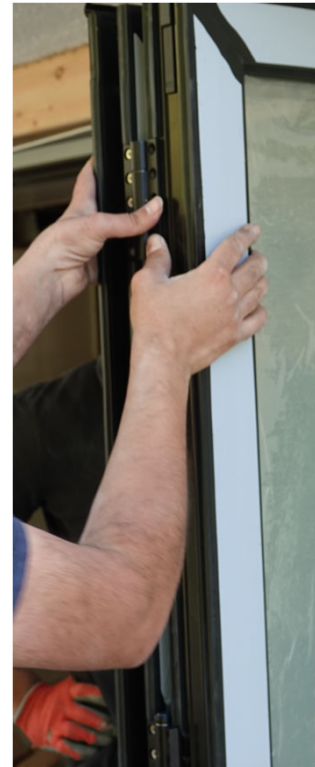
3. Place the second panel on the track and top guide in the frame.



Top Guide

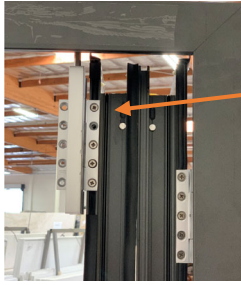
4. Connect the second panel to the first panel.

- Use 2" screws for attaching hinges to the door panels.



5. Connect the third panel to the second panel.

- For 3 panel doors: third panel is labeled #3 or its the one with holes for main handle and lock. Skip step 6.
- Use the 2" screws for attaching hinges to the door panels.



- For 4 panel doors : third panel is labeled #3 or its the one with small lock on side of the door as shown here.



6. Install the panel #4 to the other side of frame.

- Fourth panel is the panel with holes for main handle and lock.
- Use the 1" screws for attaching hinges to the frame.

Hardware installation

1. Install the main handles to the main panel and small handle to the first folding .

- Main lock is 3-point lock, in order to lock the door, pull up the handle, latches will engage and with turning the knob you can disable the handle. Turning the knob by itself will not engage the latches.



2(Optional). Install door magnet or grab catch door holder:

- Door holder is optional and there is no predrilled hole for it, it will be installed between last two folding panels.
- Install it either on top or bottom of the panels.



FULLY ASSEMBLED PRODUCT



For additional information or questions
please contact us



2089 Anchor Ct. Newbury Park, CA 91320

www.erishomeproducts.com

info@erishomeproducts.com

Office: 805.375.6333