



# Tile Trim Solutions

## Luxury Vinyl Flooring

### Installation Tips

Aluminum trims are easy to cut to appropriate length.

**Please use appropriate eye and personal protection equipment.**

1. Choose shape and profile according to tile or plank thickness.
2. Make sure the space you are using the transition is level and free of debris and dirt.
3. Ensure the edge of your flooring will fit BEFORE making cuts. Trims are designed to tap down, if necessary, to a slightly lower surface using a rubber mallet. Use only enough force to gently tap down edge for snug fit.
4. Use a miter saw, chop saw, rotary tool or hack saw to cut desired length.
5. Remove any burrs or sharp edges with a metal file. Be careful not to gouge or scratch face of trim.

#### 6. Fixed Application Installation:

- **FASTENERS:** If using fastener or screws, place the trim in the desired position and mark the edges of profile on the substrate. Secure each end about 1" from end and space additional holes 10-12" apart. Drill pilot holes at the marked locations. Trims are designed with a small recessed channel to guide you where to drill hold in trim anchor leg.
- Use a #4 flat head screw with a minimum length  $\frac{3}{4}$ ", Install the fasteners so the screw head is as flush with the anchor leg as possible. If installing on concrete substrates the use of anchors is recommended. Install wood or plastic anchors, per the manufacturer instructions, into subfloor where the screws will be used to secure the trim.
- **ADHESIVES:** LVT trims may also be placed in a fixed position using a heavy-duty general-purpose construction adhesive. If possible, use a urethane-based adhesive for additional adhesion. Follow adhesion manufacturer instructions and safety precautions.
- Place the face the trim in the desired position and mark the edges of the profile on the substrate. Apply a thin layer to the back side of the trim and apply an equal amount on the substrate. Press the anchor leg into the substrate and align to the correct position. IMMEDIATELY REMOVE ANY EXCESS ADHESIVE FROM THE FACE OF THE PROFILE.

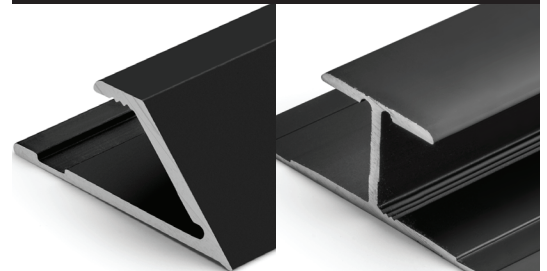
## TrimMaster™

Solutions for  
Luxury Vinyl & Resilient Flooring

**SecureFit™**  
**Dimple Design**  
Patent Pending



- Taps down to a perfect fit every time
- 3 sizes adjust to fit floors up to 2mm to 8.2mm
- Universal design solves a wide range of floor transition problems



### Maintenance and Cleaning Guide

Trim Master products are designed for years of maintenance free service and do not require any special maintenance. Clean them regularly using common household cleaning agents. Do not use cleaning agents with hydrochloric and hydrofluoric acid. Abrasive cleaners should not be used on anodized aluminum as they may scratch the surface. Remove any grout, mortar or thin set from the surface immediately after installation.

[www.columbiaaluminumproductsllc.com](http://www.columbiaaluminumproductsllc.com)

## 10 Year Residential Warranty