

Petite MicroBubble Walk In Bathtub



MH03167-HB Left Hand Door & Drain



MH03168-HB Right Hand Door & Drain

Specifications

Actual Size: 27.5" W x 52.25" L x 38" H

Shipping Size: 31" W x 57" L x 46" H

Shipping Weight: 230 lbs.

Net Weight: 130 lbs.

Water Capacity:

70 gal. US (unoccupied)

35-55 gal. US (occupied)

Options

- Left or Right Hand Door/Drain

Included Features

Tub Shell – Acrylic Tub Shell:

- High quality cast acrylic
- Excellent color uniformity
- High gloss white finish
- Fiberglass reinforced

1. Stainless Steel Frame
2. Low threshold step in 8" with the option to lower to 5"
3. Seat Width: 19.75"
4. Eight (8) adjustable heavy duty leveling legs
5. Stainless steel and tempered glass door, door frame and door seal gasket
6. Removable door for easy cleaning
7. Deck mount safety grab bar
8. Removable rubber back support (white)
9. Unique removable swivel tray (Patented)
10. MicroBubble Therapy System
11. 1HP Pump (10 amp)
12. Pressure Vessel
13. Air Switch
14. Agitator Valve
15. Two (2) front, one (1) toe kick and one (1) side removable access panels
16. Wall extension kit to fit in standard 60" opening

13. Huntington Brass Fast Fill Faucet Set

- Hot Lever Handle
- Cold Lever Handle
- Diverter + Handle
- Hand Shower
- Spout with Shank (extends to 59")

Plumbing

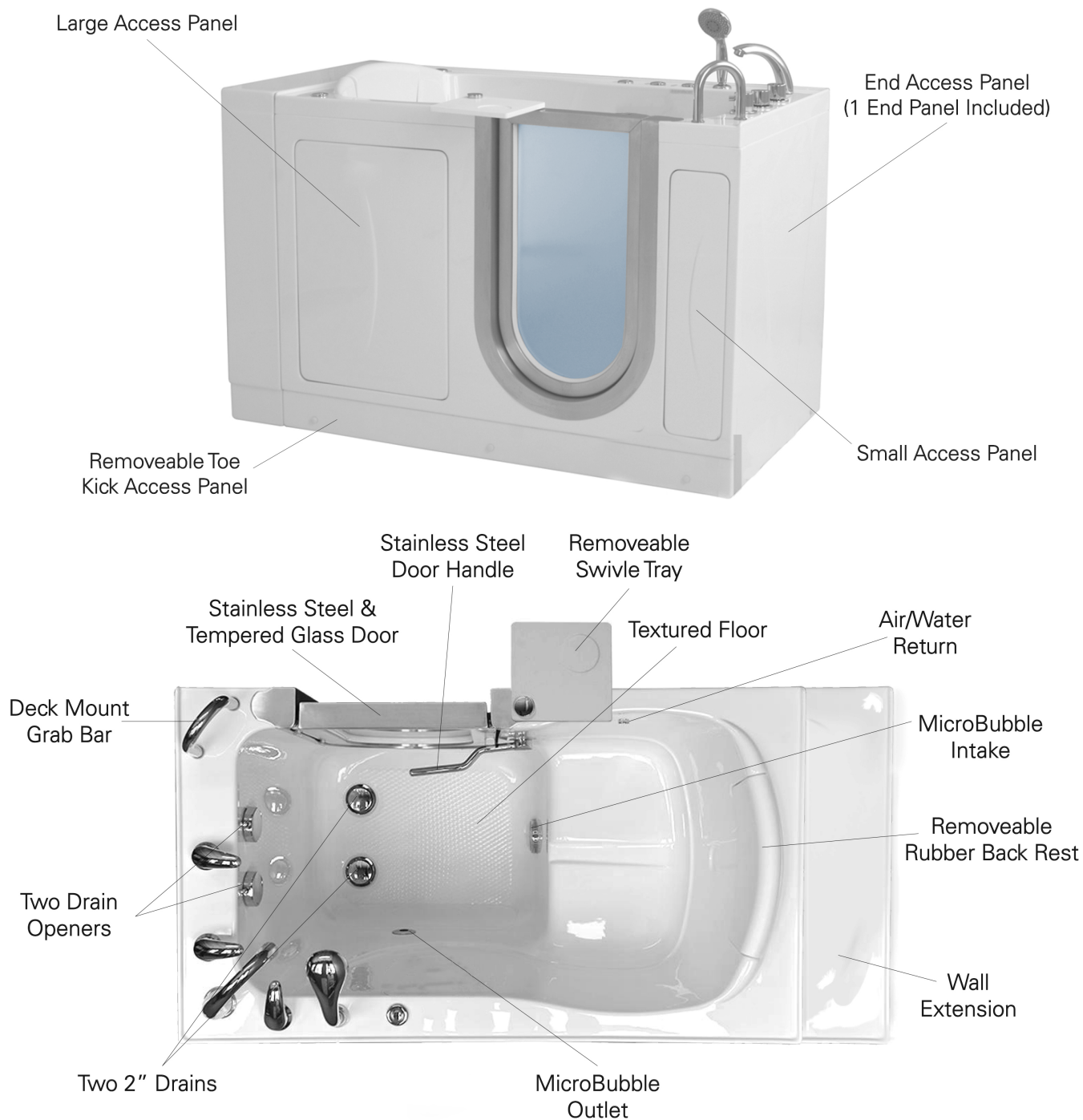
- Two (2) x 2" floor drains with 2 overflows and 2 ADA compliant stainless steel cable operated openers with extension handles
- Drainage time +/- 80 seconds to overflow
- Two (2) PVC 2" drain elbows with 2" opening

Warranty

- Lifetime limited warranty on frame, door, door seal gasket and acrylic walk in tub shell
- Five (5) Year parts warranty*

*For more information please visit www.ellasbubbles.com

Petite MicroBubble Walk In Bathtub



Panel On



Panel Off

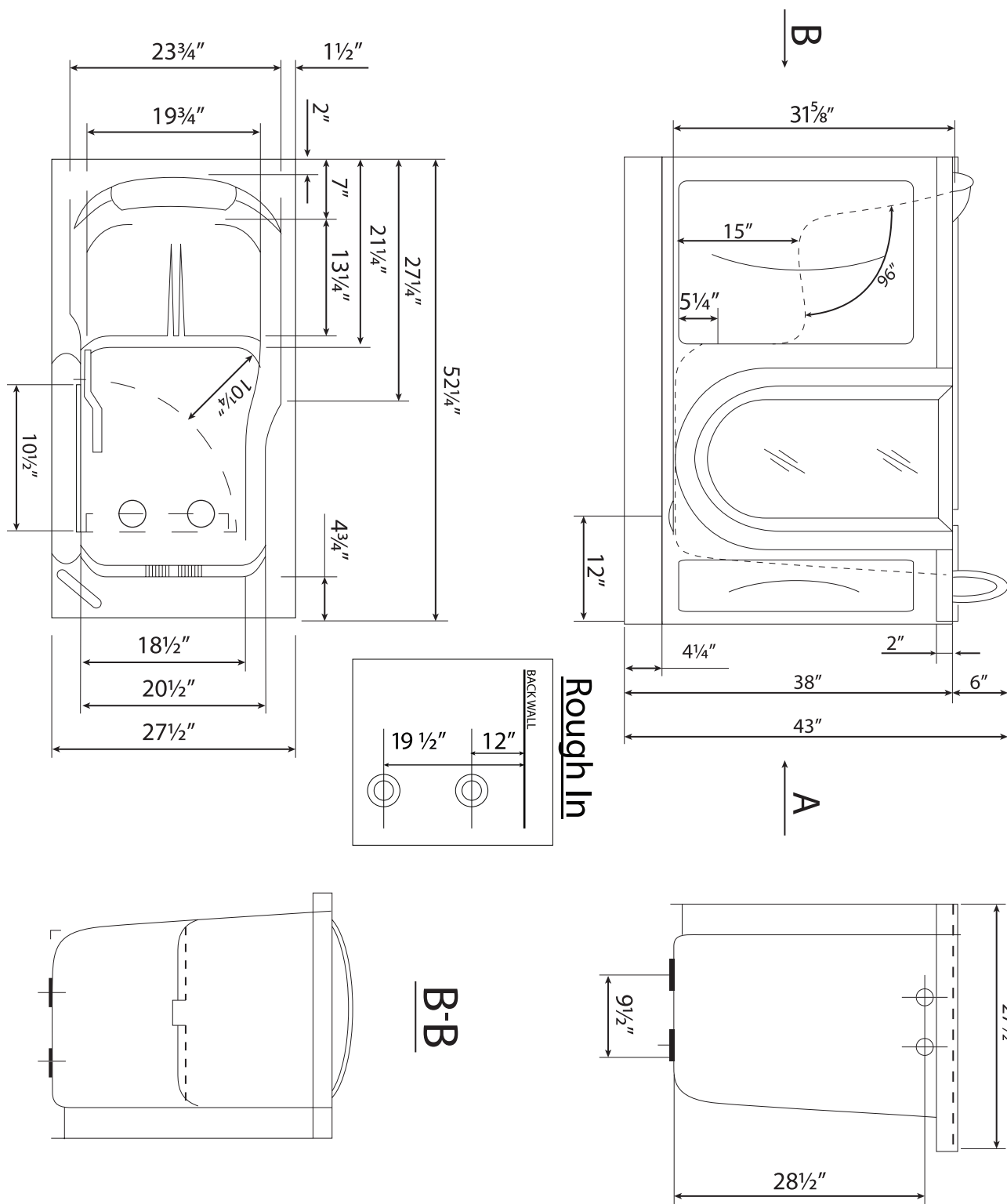


Lowered Threshold



Baseboard On
(not supplied)

Petite MicroBubble Walk In Bathtub



Disclaimer:

In an effort to continually improve our product, specifications and configurations are subject to change without notice. Before ordering or installing, consider future access to essential equipment.

A chrome faucet set featuring a high-arc spout, two lever handles, and a handheld showerhead. The components are arranged in a row against a white background.

